



WHAT KIND OF RIDE

ARE YOU GETTING
FROM YOUR
UTILITY VEHICLE?

The human body can take a substantial amount of abuse. And on most utility vehicles, it does. But the Workman® utility vehicle is designed to eliminate stress and fatigue that can affect employee productivity. Our high-travel suspension features an anti-sway bar, dual coil springs, high-performance shocks, and a DeDion axle. No wonder Workman operators say they feel more energized at the end of the day. Plus, fewer bumps, jerks and rattles are among the many reasons why Workman vehicles are so durable. Call 800-803-8676, see your Toro distributor for a test ride, or visit us at www.toro.com.



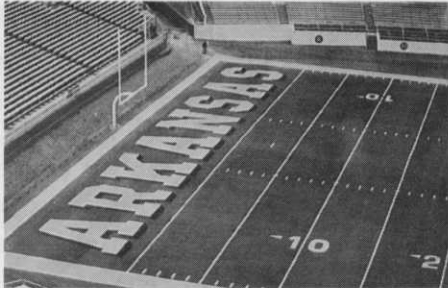
TORO WORKMAN®

©1999 The Toro Company

*It's about
productivity*

The Athletic Surfaces Experts!

"We make the game look better!"



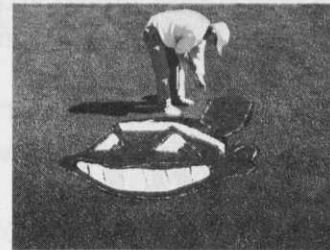
Green Turf Colorant



Turf Stencils



Tennis Court Coatings



Turf Paint

WORLD



CLASS

athleticsurfaces

1-800-748-9649

P. O. Drawer 152 • 817 North Broad Street
Leland, MS 38756-0152
(601) 686-9997 • Fax (601) 686-9977
www.wrldclass.com • info@wrldclass.com

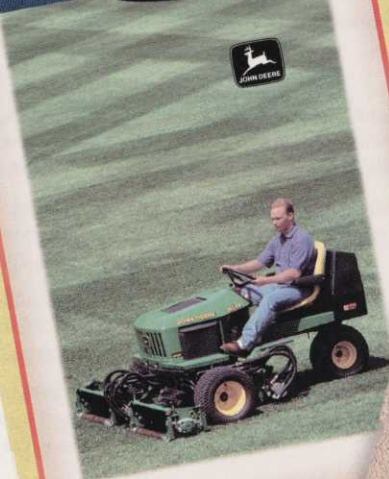
- Field Marking Paints
- Turf Colorants
- Computerized Graphic Logos
- Athletic Stripers
- Mixing Accessories
- Field Accessories
- Select Athletic Flooring (Tennis, Track & Weight Room)
- Field Stencils & Accessories
- Non-Slip Stadium Coatings
- Gym Floor Products
- Anti-Graffiti Paint
- Privacy Curtains & Windscreens
- Traffic Paint, Stencils & Accessories
- Tenth Man Tools



Great looking fields are in the

2653A & 2653

Utility Mowers



2653A
& 2653

Utility Mowers

Born: John Deere Turf Care, Fuquay-Varina, NC
Weight: 1,725 lbs. (2653A) 1,550 lbs. (2653)
Position: Outfield, any field

Career highlights

- Both feature 18-hp liquid-cooled engines
- Hydraulically driven ESP™ cutting units
- Reels and bedknives are made of induction-hardened high-impact steel



Catch this!

The 2653A has the ability to power both the standard 26-inch cutting units, for a 72-inch stripe – as well as 30-inch units for an 84-inch cut.

1800

Utility Vehicle



Bunker & Field Rake

1200A

1200A

Bunker & Field Rake

Born: John Deere Horicon Works, Horicon, WI
Weight: 525 lbs.
Position: Infield skin, warning track

Career highlights

- Can carry front-, mid-, and rear-mounted implements simultaneously
- High-torque, 10-hp engine links to efficient mechanical transmission
- Hydraulic control of rear-mounted field finisher



Catch this!

The muffler and cowling design delivers only 10 dBs!

Pros who have these cards in their collection know the value of having John Deere ballfield maintenance equipment on their fields. It's a solid lineup: the Turf Gator utility vehicle with its whisper-quiet operation; the superior cut of the 2653 and 2653A utility mowers; the versatile 1200A Bunker and Field Rake; the dependable 1800 Utility Vehicle; and the straight-striping 220A and

cards.



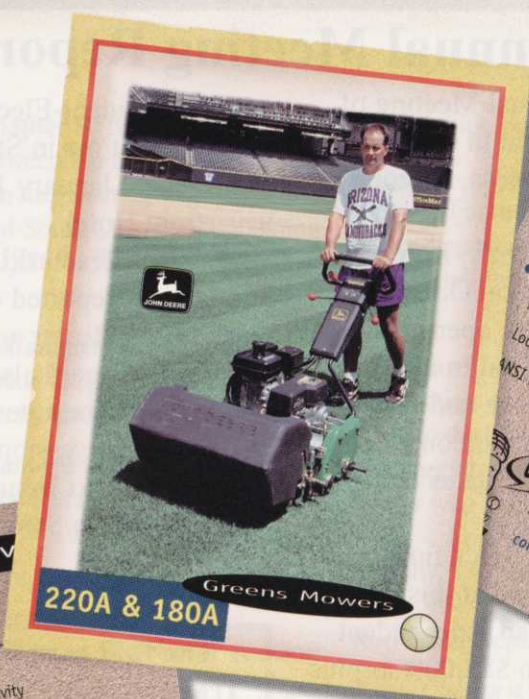
1800
 Born: John Deere Horicon Works, Horicon, WI
 Weight: 1,141 lbs. (without sprayer)
 Position: All fields

- Career highlights**
- Durable traction unit provides high productivity, low center of gravity
 - Four-wheel construction and large-diameter tires provide a comfortable ride
 - Large, open operator station with two-passenger bench seat.



The 1800 has a 2,000 pound maximum payload.

Utility Vehicle



220A & 180A
 Greens Mowers

220A & 180A
 Born: John Deere Horicon Works, Horicon, WI
 Weight: 219 lbs.
 Position: Infield grass

Career highlights

- Both deliver a quality cut and dramatic striping to infields
- External differential drive splits power to both traction rolls for exceptional straight-line tracking.
- Loop-style handlebars with operator-presence system meet ANSI B71.4-1990 standards



220A and 180A have a high degree of commonality in parts and features.



Turf Gator
 Utility Vehicle

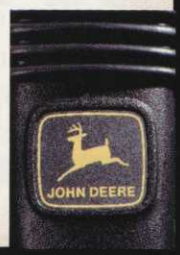
Turf Gator
 Born: John Deere Factory, Welland, Ontario
 Weight: 834 lbs.
 Position: Utility player

- Career highlights**
- Has a hefty 900-pound load capacity
 - Golf-car style transmission makes for easier and quieter operation
 - Available a variety of attachments, including med-bed and power lift



The Turf Gator has a psi of only 5.6

180A Walking Greens Mowers.
Plus our Aercore® Aerators and our lineup of gear and hydro-static-drive utility tractors.
Along with flexible financing options and overnight parts support, John Deere has the depth and experience to help you maintain a picture-perfect field. For the name of your nearest distributor or free literature, call 1-800-537-8233.
www.deere.com



Nothing Runs Like a Deere®



BASEBALL FIELDCOVER

Infield raincovers can now be installed in a minimum of time.



FOOTBALL FIELDCOVER

Even a full size fieldcover for football or soccer is easier to handle.

Field Protection Made Easy... with the FIELDCOVER SYSTEM by COVERMASTER®

You're always ahead of the game with the FIELDCOVER system by COVERMASTER®.

Thanks to this easy-to-use equipment, installation, removal and storage of a fieldcover can be quick and simple.

30
YEARS
1969-1999

First, there's TARMATE™, a strong and lightweight plastic roller available in any

COVERMASTER
COVERMASTER
COVERMASTER
MASTERS IN THE ART OF SPORTS SURFACE COVERS

length and supplied with safety end caps.

Then comes TARP MACHINE™. Attached to the P.T.O. on your tractor, this clever handling tool makes light of rolling the cover on and off the field.

Finally, with our wide choice of cover materials, COVERMASTER® will custom design a cover in the size, weight and configuration that meet your specific needs.

The COVERMASTER® FIELDCOVER SYSTEM. You could say we have you covered.

Call us today and see.



TARMATE™

SEE
THE ACTION
ON VIDEO!



TARPMACHINE™

MEMBER
Sports
Turf
Managers Association

www.covermaster.net
E-mail: info@covermaster.net

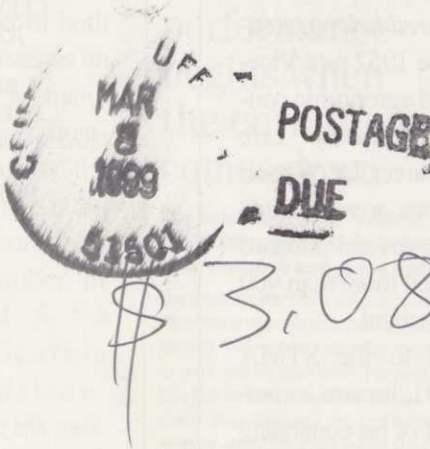


CALL TOLL FREE 1-800-387-5808

COVERMASTER INC., 100 WESTMORE DR. 11-D, REXDALE, ON, M9V 5C3 TEL 416-745-1811 FAX 416-74-COVER (742-6837)

STMA Headquarters
1375 Rolling Hills Loop
Council Bluffs, IA 51503-8552

Return Service Requested



BULK RATE
US POSTAGE
PAID
PERMIT #705
OMAHA NE