



COLORADO SPRINGS -- WHAT'S IN IT FOR YOU?!

by *Dave Rulli, President*
Colorado Chapter: *STMA*

Ahhh, Colorado -- a place where winter temperatures can range from 10 to 60 degrees, depending on the day. A place of beauty -- snow capped mountains peeking at you from behind the buildings. AND -- from January 15-19, 1997 -- a place to learn all you can from your peers at the 8th Annual STMA Conference & Exhibition in Colorado Springs!

Make your plans NOW to come out and see the show - and BOY DO WE HAVE A SHOW FOR YOU!

On Wednesday, we have a tour set up of both indoor and



The familiar Olympic Rings welcome you to Colorado Springs

outdoor facilities, including: the Olympic Training Center; Sky Sox Stadium, home of the AAA Colorado Rockies; and the Air Force Academy -- including a tour and demonstration of their newly renovated field. Wednesday night is also our "welcome" night, and we have lots of fun and festivities planned for all.

Thursday is the opening of the Trade Show, set up this year to provide a better opportunity for attendees to "mix and mingle" with the vendors.

We have PLENTY of educational sessions planned this year -- NOBODY will go home without learning SOMETHING -- I can guarantee that.

On Friday, after the sessions, head out to Cripple Creek for a night of slots, blackjack, or your choice of several video machines. Bus transportation is provided by Bronco Billys Casino & Restaurant. Departure times from the Red Lion will vary for your convenience. Reservations must be made by December 1st.

Saturday educational sessions are capped off by our Annual Awards Banquet, all at the Red Lion Hotel.

An optional tour of the Denver facilities will be offered on Sunday. I urge you to take advantage of this golden opportunity to see such sights as Coors Field, Mile High Stadium and the Denver Broncos training facility.

For spouses and friends, there are daytime tours of nearby attractions, Garden of the Gods, Cave of the Winds, and Seven Falls. A Shopping Day trip to the Castle Rock Factory Outlet Mall is also planned. Reservations deadline is December 1st.

Colorado Springs is easily accessible from Denver (60 miles north) as well as having its own brand new airport.

For those of you who like to ski -- call Colorado Ski Country USA at (303) 837-0793 for your Colorado Ski Guide which includes everything you need to know about Colorado ski areas.

For a free visitors guide for the Colorado Springs/Pikes Peak region call 1-800/DO-VISIT. AND I HOPE YOU DO VISIT!!!

STM

Proud to Support STMA



Helping You Put Quality Into Play™

SPORTS TURF MANAGER

Official Newsletter of the Sports Turf
Managers Association
1375 Rolling Hills Loop
Council Bluffs, IA 51503-8552
712/366-2669, 800/323-3875
(FAX) 712/366-9119
(e-mail) TrustyTips@aol.com

Volume XIV Number 4
July/August, 1996

OFFICERS

President
Mike Schiller
Rolling Meadows Park District

President-Elect
Steve Guise
Valley Crest Landscape, Inc.

Commercial Vice President
Henry Indyk
Turfcon

Secretary
Eugene Mayer
O.M. Scotts Company

Treasurer
Rich Moffitt
Saint Louis University

BOARD MEMBERS

L. Murray Cook
Disney Sports Complex

Bucky Trotter
University of Kentucky

Mary Owen
University of Mass. - Extension

Bob Patt
Thurman Munson Memorial Stadium

Bob Curry
Covermaster, Inc.

Immediate Past President
Greg Petry
Waukegan Park District

NATIONAL HEADQUARTERS

Executive Director
Steve Trusty

NEWSLETTER EDITOR

Stephanie Gamache
Trusty & Associates

Sports Turf Manager is a publication of Sports Turf Managers Association (STMA). It is published bi-monthly and is free to STMA members. Sports Turf Managers' goal is to promote the mission of the association by providing a channel for communication between the representatives of the board and its constituency. STMA is not responsible for the opinions expressed in this publication. Address changes, advertising, photographs, and editorial inquiries should be directed to the executive offices. © 1996 Sports Turf Managers Association. All Rights Reserved.

President's Message

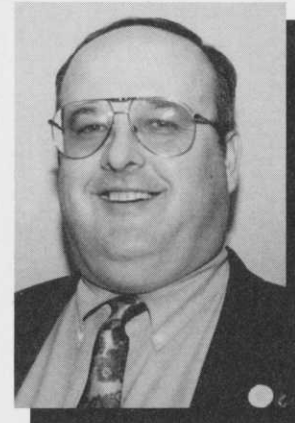
by Mike Schiller
President

Greetings! The summer of '96 has definitely been a challenge, as was this past spring. What better way to test some of the theories and implement those great ideas you picked up at the Annual Conference & Exhibition in Anaheim.

If you didn't get the chance to attend -- take a good look at this issue of the newsletter and see what we've got planned for you THIS time.

The education committee has put in a lot of long hours planning the program for our 1997 Conference & Exhibition, January 15-19 in Colorado Springs. The Colorado Chapter has lots of great tours and things set for us in the Rockies.

All that's missing is YOU! Make



Mike Schiller

your plans NOW to be a part of a great learning experience and enjoy the beauty of Colorado with other sports turf managers from all over the country. Don't Miss Out! I hope to see you there!

STM

STMA MEMBERS ON THE MOVE

L. Murray Cook - STMA Board Member, formerly with the Braves/Expos Joint Venture - now holds the position of Baseball Stadium Manager at the Disney Sports Complex, Walt Disney World, P.O. Box 10,000, Lake Buena Vista, FL (407) 363-6610.

Stephen H. Guise - STMA President-elect, has taken the position of Sports Turf Manager for Valley Crest Landscape, Inc., 24121 Ventura Blvd., Calabasas, CA 91302 (818) 223-8546.

CONGRATULATIONS GUYS!!

If you -- or someone you know -- has changed facilities or received a promotion, give us a call and let us know -- we'll be happy to publish it in the newsletter!

DONATIONS FOR AUCTION SOUGHT

STMA will hold its annual raffle and silent auction to raise funds for education and scholarship programs. To donate items for the silent auction and raffle, please notify Silent Auction Co-Chairs, Mike Trigg (847) 360-4725, or Troy Smith (303) 649-9000.



WE HAVE
A
WEB SITE!!

The New STMA Home Page is now on the World Wide Web. Your Home Page address is:
<http://www.aip.com/STMA>

Because We Care

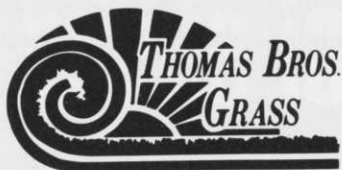
We just found out that Harry Cline, former Editor of Western Turf and Landscape Press, lost his wife, Connie, to cancer on April 3rd. Connie was also active in the turf industry. Among other things, California people knew her as the Executive Secretary of the Central California Turf Council. She had also begun some of the preliminary work on starting a Central or Northern California STMA Chapter. I talked to Harry in Mid-July and he is doing fine, under the circumstances. Since the purchase of the parent company of T&LP Harry has gone back to reporting the agricultural scene on the west coast. He sends his greetings to all his friends in STMA.

Terry Stenson, the young gentle-

man that conducted that great tour of Disneyland in January for our Seminar on Wheels, was injured in a swimming accident Memorial Day weekend. He broke and/or crushed several vertebrae. While still paralyzed from the waist down, he did get out of intensive care in mid-July and is hoping to start rehab very soon. At that report, he was on the 6th floor of Long Beach Memorial Hospital. Cards and letters can be sent to him there.

Jim Kelsey, President of Partac Peat/Beam Clay was injured in a backhoe accident at his home. While he suffered severe skull fractures around his eye, he is now back to work and expects a full recovery. Our thoughts are with them all.

STM



6000 PEVELER CT. • GRANBURY, TX 76049
1-800-388-6112

GRASS

Ours **IS** Greener
On Your Side Of
The Fence!

SAND BASED
SOD

BAyr Root
Turf

42" Big Roll
SOD

Products & Services You've Trusted
For More Than **25** Years!!

**YOUR "ONE-STOP SOURCE"
FOR AMERICA'S LEADING
BASEBALL SURFACES & SUPPLIES**



THE PROFESSIONAL'S CHOICE
... SINCE 1922

USED BY OVER 100 PRO TEAMS,
OVER 500 COLLEGES, PLUS THOUSANDS
OF TOWNS & SCHOOLS WORLDWIDE.
SPECIAL MIXES FOR INFIELDS,
PITCHER'S MOUNDS & HOME PLATE AREAS.

RED WARNING TRACKS

CONDITIONERS TO IMPROVE
LOCAL INFIELD MATERIALS:

IF TOO HARD AND POORLY DRAINING!



THE REDDER, LESS DUSTY, MORE UNIFORM
SOIL CONDITIONER & DRYING AGENT
"SUPER-RED" FOR INFIELDS
"SUPER-GREEN" FOR TURF

THAT MORE PRO TEAMS ARE USING
TO IMPROVE AERATION & DRAINAGE
YET RETAIN MOISTURE IN HOT WEATHER!

IF TOO SOFT & DUSTY!

STABILIZER®

FOR FIRM, YET RESILIENT, PLAYING SURFACES

TO QUICKLY DRY INFIELDS!



The Original & Most Absorbent
DIAMOND-DRY.

TO REMOVE STANDING WATER!

SUPER SOPPER®
WATER REMOVAL MACHINES
& THE DIAMOND PUMP™

PLUS LEADING BASEBALL SUPPLIES
AT THE BEST PRICES NATIONWIDE!

HOLLYWOOD® BASES
FIELD MARKING MACHINES
TAMPERS • DRAG MATS • RAKES
SAFETY FENCE • WINDSCREEN • RAIL PADS
BATTING PRACTICE COVERS • RAIN COVERS
PERMANENT FOUL LINES & MUCH MORE!

OVER 200 INFIELD PRODUCTS
FREE INSTRUCTIONAL BROCHURES
DISTRIBUTION CENTERS NATIONWIDE!

800-247-BEAM

908-637-4191 / FAX 908-637-8421
PARTAC PEAT CORPORATION
KELSEY PARK, GREAT MEADOWS, NJ 07838

INTRODUCING

REGIONAL INFIELD MIXES
Blended for Your State and Climate!

A Taste of What's in Store

Mary Owen, Conference Education Chairman

It's that time of year again. Time to start planning your attendance at our 8th Annual Conference & Exhibition, January 15-19, 1997, in Colorado Springs.



Conference Headquarters - Red Lion Hotel, Colorado Springs, CO

Your conference education committee has reviewed past post-conference surveys and has integrated your requests into some GREAT educational ses-

sions. For example -- Helen Stone, Adams Publishing, will give a guided interactive tour on "surfing" the World Wide Web and Internet; we'll dig into Balancing Safety and Agronomy; share workshops on the Agronomic Fundamentals for Cool and Warm Season grasses; focus on "Save Every Drop" water management with Dr. Tony Koski and delve into "What's Wrong with my Field," with Dr. Gil Landry.

The Trade Show also will be held at the Red Lion Hotel. The Thursday, January 16th, Trade Show opening from 4:30-8:00 P.M. will include a reception. On Friday, January 17th, Trade Show hours are 10:30 A.M. - 3:00 P.M., with lunch served Friday in the

continued on page 10

RainBuster

Polytarps



- Black/White reversibles for the ULTIMATE A-L-L SEASON turf protection!
- Lightweight AND Economical!
- Sizes from Golf Greens to Soccer Fields.

Complements our complete line of vinyl covers, patented zipper systems, geotextiles, grids and more! Call for your FREE BUYER'S GUIDE now.

1-800-621-0146 TOLL FREE

M. PUTTERMAN & COMPANY, INC.

4834 South Oakley • Chicago, Illinois 60609
312-927-4120 (In Illinois)

SUPER STARS IN THE ATHLETIC FIELD MAINTENANCE GAME



ALL STAR

The all-purpose field conditioner that always finishes first...with smooth, hydrostatic drive for top performance and fast response...quick and quiet...plenty of power...highly maneuverable...and a big variety of implements. All Star - choice of the Hall Of Fame Baseball Field in Cooperstown.



TOP LINER

The riding field liner that delivers professional results...for baseball, football, soccer and running tracks...with hydraulic drive...tight turning...excellent visibility...50-gallon constant-agitation paint tank...easily adjustable line widths...with cultivator, spray boom and hose-and-gun kit.

Top Liner - the top liner.

ALWAYS OUT FRONT

SMITHCO

WAYNE, PENNSYLVANIA 19087



A good-looking machine is one thing. A whole lot of improvements are the other 10.



The Jacobsen Greens King™ V Triplex Greens Mower has the cut you expect. And more.

1. The exclusive FlashAttach™ System makes changing reels, rollers, spikers and verticutters as simple as pulling a pin.
2. Walk-through operator's station allows easy entrance and exit from either side.
3. Standard tilt wheel and power steering. Rear wheel turns inside the front wheel's radius.
4. Fully enclosed engine compartment for quieter operation.
5. Operator friendly controls for easier access and greater visibility – clear sight lines all around.
6. Single pedal speed and forward/reverse control. One-touch reel lift/lower pedal.
7. Ultra-light footprint minimizes compaction.

8. Open design and handy dome light make accessing the center reel easier.
9. Easy access to battery, radiator, coolant bottle, air filter, hydraulic fill and fuel fill.
10. Standard halogen headlight for dusk and dawn.

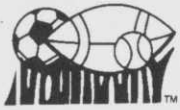
Ask your Jacobsen distributor for a Greens King V demonstration today.

THE PROFESSIONAL'S CHOICE ON TURF.

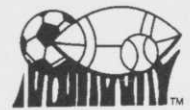
JACOBSEN
TEXTRON

Jacobsen Division of Textron Inc.

J-4-6LBWD



Sports Turf Happenings



Chapter Events

Colorado Chapter: STMA

The Colorado Chapter will meet on August 15th at Colorado State University's Hughes Stadium in Fort Collins, CO. The meeting will concentrate on football and soccer field management. Sonny Lubick, CSTMA member -- and Head Coach of CSU Football -- will be the keynote speaker.

For information on the Colorado Chapter or upcoming events, call the 24-Hour CSTMA Chapter Hotline/FAX: (303) 438-9645 and leave a message, or contact: Troy Smith, Denver Broncos, at (303) 649-9000.

Florida Chapter #1: STMA

The Florida Chapter will assist with the STMA booth at the Florida Turfgrass Association show, August 24th and 25th at the Tampa (FL) Convention Center.

The Florida Chapter also will participate in the "Turf Rodeo" on August 29th held in conjunction with the Florida Parks and Recreation Association (FPRA) activities at the Rolling Hills Country Club in Ft. Lauderdale. Crews will showcase their skills.

For more information on these events, the Florida Chapter, and other pending events, contact: John Mascaro (305) 938-7477.

Southern California Chapter: STMA

The Southern California Chapter will meet August 31st at the Epicenter Stadium in Rancho Cucamonga. Activities include a stadium tour, a dinner and camaraderie break, and the opportunity to attend the game between the Rancho Cucamonga Quakes ball team and a worthy opponent.

The Southern California Chapter will "do it again," adopting for their 1996 field renovation project the combination field hockey - soccer - football field of Rancho Buena Vista High School in Vista, CA. The Chapter will meet at the school on October 25th to outline the renovation plan, then move outdoors for hands-on demonstrations of the tasks at hand. On October 26th, the volunteers will converge on the field for the renovation work day.

For information on these events, the Southern California Chapter and other upcoming activities, contact: Chris Bunnell at (619) 432-2421.

Minnesota Chapter:STMA

The Minnesota Chapter is planning a Fall Workshop for mid-September. More details will be announced soon.

For information on the Minnesota Chapter or upcoming activities, contact: Brian Deyak at (612) 255-7223.

Midwest Chapter: STMA

The Midwest Chapter's next meeting will be September 11th at the Inwood Recreation Center of the Joliet Park District in Joliet, IL. The meeting will focus on Integrated Pest Management, checking out the latest techniques and products available to keep insect and disease problems under control. Attendees also will tour the Inwood Center complex.

For more information on the Midwest Chapter or upcoming events, call: The Chapter Hotline (847) 439-4727.

The Iowa Sports Turf Managers Association

For information on the Iowa Chapter or upcoming activities, contact: Lori Westrum at The Turf Office at (515) 232-8222 (phone) or (515) 232-8228 (fax).

STMA Chapters on the Grow:

Kansas: The newly forming Kansas Chapter has adopted a name: The Great Plains Chapter. They meet on the last Wednesday of each month. The August 28th meeting at Lawrence-Dumont Stadium begins at 4:00 P.M. and will last approximately two hours.

A mid-September Seminar is being planned. The same Seminar format will be repeated during the designated week at different sites across the state -- starting in East Kansas and then moving on to Central and West Kansas locations.

For more information on these events, or the Chapter, contact: Mark Schimming of Wichita Baseball, Inc. at (316) 292-2907, Extension 205.

Arizona: For information on the newly forming Sports Turf Managers Association of Arizona, and upcoming events, contact: Bill Murphy, City of Scottsdale Parks and Recreation Department, at (602) 994-7954.

OFFICIAL STMA CHAPTER SPONSORS



Nothing Runs
Like a Deere®



Headquarters Update

by Steve Trusty, Executive Director

Membership Update

STMA has added 104 new members since January 1. Welcome aboard! As of June 30th, our membership stands at 646. While this is a very small portion of the number of potential members, it is substantial growth over a year ago. I'm also pleased to report that our retention rate is at least 84%. I'm told that this is a better retention rate than previous years and for an organization such as ours it is an excellent rate. Naturally, we'd like 99.9%, and would love to welcome all former members back into the fold. STMA is on the move and growing. Besides the benefits of membership that attracted the new members and prompted the renewing members, your Board of Directors and committees are hard at work to provide even more services. They want your input and they want STMA to even more closely meet the needs of those responsible for maintaining safer sports turf areas. Contact your board members or this office any time you have ideas. Talk to your peers. Let them know about STMA and why you belong. Pass along a membership application. Just think what could happen if each one of you sponsored one new member. How about two?

Watch for your September issue of sportsTURF for details on a new membership campaign.

New feature in your Newsletter

Several members have suggested that we provide some type of Q & A column. When I met with the Great Plains Chapter in June, member Tim Estes came forward with a way to handle the column and offered to provide the lead-off question and the Wichita answer. As he stressed, this is not the only way to do something -- either in this column setup or in whatever field situation is being addressed. For now, the idea of the column is to throw out a question and print the response of several members. The response is just their way of doing it. Because sports turf management is an art, as well as a science, the

idea is not to establish this is right and that wrong, but rather to establish that -- with the field conditions I face and with the resources of materials, dollars and labor my facility has available -- this is how we get the job done. **How Do You Do....?** will provide several ways of answering one question. We want to cover a variety of topics and different types of fields over the

course of a year.

This is your newsletter -- designed to fill your needs. Give us a call at 800/323-3875 and let us know what you think about this feature. And -- if you like it -- give us your **How Do You Do....?** questions or tell us "How you do...."

Keep it green!

STMA

Life
is short.
SOD IT!

WEST COAST
 **TURF**

GROWERS AND
INSTALLERS OF
PREMIUM QUALITY
SOD AND STOLONS

P.O. Box 4563, Palm Desert, CA 92261 (800) 447-1840

Welcome New STMA Members

Devin Bair
The Good Earth
Mt. Pleasant, SC

James B. Boynton III
City of Birmingham
Birmingham, AL

Ron Collins
City of Fairfield
Fairfield, CA

Richard Doyle
ISU-Athletic Dept.
Story City, IA

Brad Fresenburg
Univ. of MO-Turf Research
Columbia, MO

Great Greens of America, Inc.
R.D. "Rick" Parker
Colleyville, TX

Philip Harbaugh
Columbus Parks & Rec.
Columbus, IN

Larry Harrison
Tooele City Corporation
Tooele, UT

Steve Heck
Columbus Parks & Rec.
Columbus, IN

Hunter Industries
Cita Berthelsen
Idledale, CO

Jim Lamb
Littleton Public Schools
Littleton, CO

Munie Outdoor Services
Joseph A. Munie
Belleville, IL

L.R. Nelson Corp.
Todd Chilton
Vista, CA

L.R. Nelson Corp.
Frank Rhein
Stuart, FL

L.R. Nelson Corp.
Bob Yakel
Waukesha, WI

Northcoast Distributing
Warren Reinhard
Cleveland, OH

Dale Roe
ISU-Athletic Dept.
Ames, IA

Donald Skeens
Glynn County Bd. of Ed.
St. Simons Island, GA

Smithco
Donald H. Smith
Wayne, PA

Joe Sousa
City of Los Banos
Los Banos, CA

Turfster International
Julie Crouse
Brighton, MI

Robert Urban
NPAA Soccer
Wallingford, PA

Trevor Vance
Kansas City Royals
Kansas City, MO

Luke Yoder
Iowa Cubs
Des Moines, IA

How Do You Do?

The Question -- How Do You Repair Your Batter's Boxes?

Answered by Tim Estes and Mark Schimming of the Wichita Wranglers

We repair our batter's boxes after any event in which they have been dug out. We first sweep out the holes so that there is not even any dust left because we feel dust from old clay hurts the packing and consistency of the clay we use to rebuild the holes. We use new clay every time we rebuild because we feel this provides us with the best results and we can afford to do it.

After the holes have been swept, we sprinkle them with water from a watering can, applying just enough to moisten everything. If there are puddles, we've put on too much water. We then put a layer of new clay in the hole and tamp it down quite well. The layer of clay we use is usually about one inch thick, but the thickness would vary depending on the type of clay and how much you want to pack in. We then remoisten the clay and put another layer of new clay on and tamp it in. We will repeat this process until the holes have been filled and leveled.

We will check for "levelness" with the flat side of a rake, just pushing the rake over the area and looking for any depressions or high spots.

Tim likes to put a rag or towel over the clay as he packs it to keep the clay from doing that annoying sticking to the tamp. The rest of the crew just chooses to use the burlap or nylon covered tamps to prevent that problem.

We do these repairs every night after the game and broom it over or rake it over and the holes are pretty well taken care of.

Periodically, we will remove the excess clay to compen-


sate for all the new clay that we have added.

Answered by Charles Forsman, Lakeside School, Seattle, Washington

Our school has one softball field, used for girls' fast pitch softball. Damage in the batter's box is minimal. We keep some of the infield dirt mix on hand for repairs. We rake out any holes, then fill them in with the appropriate amount of infield dirt and tamp it in. Retained soil

continued on page 10

KLAWOG®



A New Foundation for Sports

MOUND and BATTER'S BOX MIX

50

Ground Stabilizer

Klawog® Mound and Batter's Box Mix - A patented processed clay compound designed to stabilize heavy-use areas. Formulated for controlled consistency. Klawog welds with itself for fast easy installation and repairs. Available in 50 lb. bags, no mixing, ready to use. Also manufactured for golf bunkers, horse stables and horse-shoe pits.

Wessco, Inc. • P.O. Box 4025 • Copley, Ohio • 44321
Phone/Fax (216) 745-9322



“Roots 1-2-3™ is now part of our turf care team at the City of Omaha’s award winning Rosenblatt Stadium, home of the College World Series and the Omaha Royals.”

Jesse Cuevas, Jr.
Stadium Superintendent
Member, S.T.M.A.



roots inc.

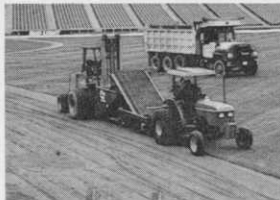
A Division of LISA Products Corporation
3120 Weatherford Road, Independence MO

Call 1(800) 817-1889 use **Fast Fax #1060596** and/or Circle **106** on Postage Free Card

WHY DO MAJOR UNIVERSITIES, THE MAJOR LEAGUES, AND N.F.L. TEAMS CALL **CYGNET WHEN THEY NEED EMERGENCY REPAIRS or NEW INSTALLATIONS? (not to play ball)**



INSTALLED CLEVELAND INDIANS
IN 42" AND 48" ROLLS



STRIPPED JACOBS FIELD
CLEVELAND INDIANS



INSTALLED OHIO STATE (AND
STRIPPED) 2" THICK TURF 48" ROLLS

**FOR fewer, tighter seams
stability and performance
when you are ready to install,
give **CYGNET** a call**

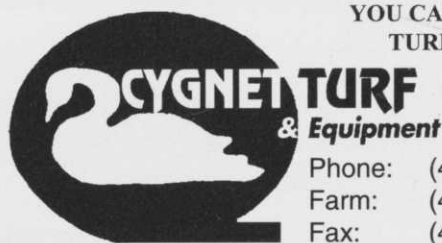
...BECAUSE **CYGNET PERFORMS!!!**

NEW from CYGNET: We are able to prescription strip a sportsfield in hours (stripped Ohio State's entire football field in six hours) with our new machine.

CYGNET is able to harvest 48" WIDE ROLLS consistently from very thin to over 2" thick. We can install these rolls without pulling or pushing them along the ground (no stretching or tearing). Our patented machines carry the rolls, turn them at ground speed, and install down a controllable slide for tighter seams.

NO ONE ELSE CAN MAKE THIS CLAIM
U. S. Pat. #5,215,248 & 5,307,880

4111 Insley Road
North Baltimore, Ohio 45872



**YOU CAN'T INSTALL
TURF BETTER**

Phone: (419) 354-1112
Farm: (419) 655-2020
Fax: (419) 352-1244

How Do You Do....?

continued from page 8

moisture generally is adequate during our playing season, so wetting the material isn't necessary. Because holes are small and occur infrequently, "eyeballing" for leveling is all we need to do. Final leveling of the repaired areas is handled during the usual pre-game preparations of scarifying and dragging.

Answered by Tom Curran, City of Pampano Beach (Florida), Parks and Recreation

We have multiple baseball fields in our system, with multiple levels of play. We use Beam Clay in the batter's boxes, even at the recreational level, using the pitcher's mound mix, because it's a bit less expensive. We start the season by digging out the batter's box area, removing some of the typical clay and adding a layer of several inches of the pitcher's mound mix. We wet and pack following instructions on the bag, then put a little bit of the field clay over the top as a dusting, so we have a solid base for firm footing with a light, looser topping. We repair the entire batter's box area every day, rather than spot repairing holes. If the budget is tight, we'll repair only the right hander's batter's box every day, tackling the left hander's batter's box as needed. Every few months, we'll remove the old clay and replace it with new pitcher's mound mix.

STM

A Taste of What's in Store

continued from page 4

Trade Show area.

The STMA Annual Meeting & Election of Officers will be held Saturday afternoon with the gala Banquet and Awards program held Saturday night.

This is just a peek of what's in store for you in Colorado Springs. SO -- Make your plans NOW. I Hope to see you there!

STM



A-1 SOILS COMPANY

AN H. G. FENTON COMPANY

Customized Soil Blending - On Site Lab - Soil Consultant
Quality Blends - Soil Amendments - Mulches - Topsoils
Recycled Rock - Gravel - Sand - Concrete & Asphalt Dumpsites

North: 10210 Camino Santa Fe in Mira Mesa
South: 9310 Friars Road in Mission Valley

Monday - Friday 7:00 - 5:00 / Saturday 7:00 - 1:00 (South Only)

619-281-1914



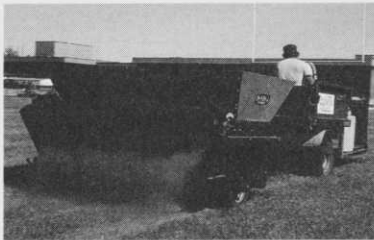
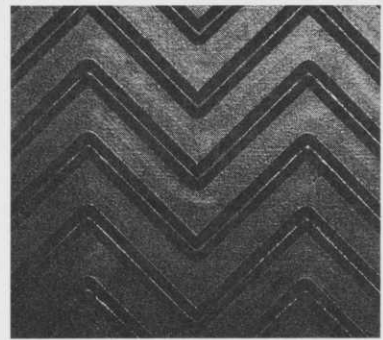
PRE-MIXED CONCRETE COMPANY

AN H. G. FENTON COMPANY

Serving all of San Diego County with plants located in:
Escondido - Carlsbad - Pala - Miramar - Mission Valley
El Cajon - Otay - Residential / Commercial

619-283-3971

Our New Pattern Will Change The Way You Top Dress.



Top dress a field in less than 2 hours

Turfco's patented chevron belt handles all types of top dressing mixtures from sand to compost, wet or dry. The belt's chevron ridges, combined with ground drive, make sure that material flows consistently and spreads evenly. The top dresser assists in leveling out depressions and providing good drainage. Because there are no hydraulics the top dresser can be hooked up to any tractor or turf truck. There's less maintenance, lower costs, and no oil leaks on your field. Top dressers since 1961. Call 612-785-1000.



*Low PSI ground driven
6 wheel design*



*Eliminates shovel
loading*



*Precise on/off
application*



**Turfco Manufacturing Inc., 1655 101st Avenue Northeast
Minneapolis, MN 55449-4420, (612) 785-1000 Fax (612) 785-0556**



*Out front cutting
with baskets for clippings.*



*Attractive striping
shows-off playing field.*

Great Sports Striping At Superb Prices

- Light on your wallet – low initial cost and long life
- Great striping from the shearing reel cut of a National
- Smooth, clean cutting builds hardier, healthier turf
- Easier to sharpen and lower operating cost
- Easier to maintain than rotary riding mower
- Easy rear turning wheel for high maneuverability

For details call: (612) 646-4079



NATIONAL MOWER COMPANY

700 Raymond Avenue
St. Paul, Minnesota 55114
TEL (612) 646-4079
FAX (612) 646-2887



*Groom 2-4 acres an hour with
National Mower 70' Sports Turf Triplex*

NATIONAL® is a Registered Trademark of National Mower Company

Nothing makes sports turf look better than a National. The Best Price. The Best Cutting.

NEW!

RAINCOVER^{Plus}TM

Covermaster® leads the way in sports field cover technology.

PIRA

Now there's **Raincover^{Plus}**TM, the ultimate infield protection cover, developed by Covermaster's technical research. Test results* show that its special color combination reduces potential heat build up under the cover better than any other cover. It's also stronger, lightweight and easy to handle.

**COVERMASTER
COVERMASTER
COVERMASTER**
MASTERS IN THE ART OF SPORTS SURFACE COVERS

Call us for a sample and full details of the latest in raincover technology.
* Available upon request.

CALL TOLL FREE AT 1-800-387-5808



ATHLETIC FIELD COVER HANDLING SYSTEM

Covermaster's lightweight plastic handling system features integral couplers that enable you to assemble the roller to lengths that meet your requirements.



HANDLING SYSTEM SAFETY END CAPS

Unique safety end caps minimize the risk of injury from roller edges for the players as well as the grounds crew.



COVERMASTER INC., 100 WESTMORE DR., 11-D, REXDALE, ON, M9V 5C3 TEL 416-745-1811 FAX 416-74-COVER (742-6837)

Sports Turf Managers Association
1375 Rolling Hills Loop
Council Bluffs, IA 515103-8552

BULK RATE
US POSTAGE
PAID
PERMIT #705
OMAHA NE



Donated by Dr. Kent W. Kirtz, 2006