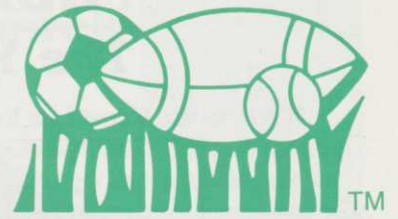


The Sports Turf Manager



December, 1988

Volume V Number 4

MILESTONES:

The Year In Review



The stately, but friendly confines finally see the light-Wrigley Field.



Hall of Famer Number 26, Billy Williams, speaks at DuPage.



STMA and STA of Canada cooperate to provide quality education programs.
Dr. Kurtz (STMA)
Annette Anderson (STA).



Artificial turf out, natural grass in at Chicago's Soldier Field.



100 degree weather for weeks. No rain, humid, unbearable. Midwest Park Executive Show at Harper College - Summer 1988.

MILESTONES:

The Year In Review



Special award to Brian Robnison. Institute of Groundsmanship presented at Windsor Show, September, 1988.



39,012 fans and 614 media saw the first night game at Wrigley Field, August 8, 1988.



STMA and IOG from the United Kingdom socialize at STMA meeting in Houston, Texas, February, 1988.



STMA presented to U.C. Riverside a \$1000 research grant to study wear tolerance of sports turf grasses. Traffic simulator driven by Dr. Matt Leonard.



Field demonstrations and sports turf tours provide a learn-by-doing approach to education.

Doc's Dugout



Time sure flies as here we are into basketball, football is winding down and right around the corner is baseball. Once again we will celebrate the holiday season with gifts, the joy and voices of happy children, festive lights, singing, delicious food, family get-togethers and the warmth of love and friendship.

I would like to reflect on an event that took place nearly 10 years ago in Milwaukee, Wisconsin during the holiday season. A gentleman we have all come to know and respect - Harry Gill - started what we call today STMA, by sending out holiday greeting cards to other head groundskeepers around the country. Harry did this with the dream that it might lead to getting groundskeepers better acquainted with each other, and hence, initiate a sharing of knowledge, expertise and possibly some close and lasting friendships. Well, it has blossomed and prospered from those meager beginnings into a well-respected international association with a membership of nearly 800. But STMA would not have evolved so rapidly without the volunteer assistance, hard work and dedication of the many individuals like Harry Gill, who have given so much of themselves.

While many of you will enjoy the holidays in the warmth of your home, several of our dedicated members will have the holiday festivities cut short by the demands of the job or the adversities of the weather. Some will be plowing snow, others de-icing roads, while the more fortunate will be nurturing the seed that was sown earlier, fertilizing a weakened sward or painting end zones and logos in preparation for the main event; football.

Our hats are off to each and everyone of you who will spend the holidays performing the most important job in sports - preparing a field of play which is safe, aesthetically pleasing and agronomically sound for the athlete. For this dedication we are proud of your accomplishments. We all support your efforts and are with you in spirit. Remember, "when the going gets tough, the tough get going." It is the inner pride, the job satisfaction, and the opportunity to make the most of yourself that is most important in our profession.

Last spring I had the privilege of listening to the legendary, retired head basketball coach from UCLA, John Wooden. He talked about the seven point creed that was given to him by his father when he graduated from a small country grade school. John has tried to live by this creed throughout his life and I feel it is worth sharing with each of you and possibly will be material for some New Year's Resolutions.

The creed is called, "*Making the most of one's self.*"

1. Be true to yourself
2. Make each day your masterpiece
3. Help others
4. Drink deeply from good books
5. Make friendship a fine art
6. Build a shelter against a rainy day
7. Pray for guidance and give thanks for your blessings everyday

Thanks John Wooden for this wonderful message, it certainly is food for thought.

Now, may I wish each and every one of you a joyous and safe holiday and a healthy and prosperous 1989 Sports Turf season.

I look forward to seeing you, and encourage your attendance and support at our first annual International Sports Turf Conference and Show at Dodgertown in Vero Beach, Florida, January 13-15, 1989.

Yours for better and safer sports turf,

Kent W. Kurtz
Executive Director

President's Farewell

First of all, I would like to wish all STMA members, affiliates, their families and friends a very happy holiday season and a very happy and prosperous new year. As the time is growing closer for STMA's Annual Meeting and Conference, I hope all of you have made plans to attend. A great deal of effort has gone into the planning of the educational session and trade show and it promises to be one of the best conferences that STMA has ever offered. I am personally looking forward to participating in the conference and meeting many of you at Dodgertown.

Since this is my last "President's Message," I would also like to take this opportunity to thank everyone for their support and help this past year. STMA has continued to grow at a phenomenal rate through the efforts and leadership of some very dedicated people. The most notable accomplishment this past year has been the establishment of SPORTSturf Magazine as our official journal. The second, but not any less important, has been the decision to sponsor our first "solo" Annual Conference. In the coming years, my most sincere hope is that the enthusiasm and dedication that has benefited me during my tenure as President will continue and that STMA and its members will continue to lead the industry in the management of quality sports turf.

Sincerely,

Mark Hodnick
President

TRIVIA

1. When was the first night baseball game held in Wrigley Field history?
2. How many miles of hot water pipes are required under a regulation soccer field to adequately transfer heat from the shaded side while still keeping the grass in tip-top condition throughout the problem months?

Answers are on page 13

Protect your turf with Chipco.[®]



 **RHÔNE-POULENC AG COMPANY**

P. O. Box 12014, 2 T. W. Alexander Drive
Research Triangle Park, NC 27709
919/549-2000

STMA's First Officers and Board

The first official meeting of the Sports Turf Managers Association was held on March 4, 1981 at Purdue University. The first officers included:

President - Dick Ericson*
Minneapolis, MN

Vice President - Harry Gill*
Milwaukee, WI

Treasurer - Dan Weisenberger*
Purdue University

Executive Secretary - Erik Madison Jr.
Appleton, WI

Directors

Tony Burnett*
RFK Stadium
Washington, D.C.

Dale Sandin*
Orange Bowl
Miami, FL

George Toma
Kansas City Royals
Kansas City, MO

Jay Bolt**
Director of Buildings and Grounds,
Grand Valley State College,
Allendale, Michigan.

Pete DeVos**
Culver Military Academy
Culver, Indiana.

Robert Gillie**
Fort Wayne Community Schools,
Ft. Wayne, Indiana.

* Current STMA members

**If anyone knows the whereabouts of the above pioneers, please let us know.

Research On Turf Racecourses And Other Equestrian Tracks

Arthur Read, RVA Omnisports Inc., Don Mills, Ontario



Research into the design of Turf Racecourses has paralleled work in the golf course and sports field areas with a slightly greater emphasis on durability because of the heavier loads that are imposed by a race horse.

Early courses were constructed in natural pastures and fields, but some pastures became preferred because of their superior load bearing qualities. These were well drained sandy clay loams.

As racing becomes more formalized in North America the need for longer lasting surfaces resulted in the creation of sandy loam "dirt" courses with no grass cover and improved turf courses with a sand topsoil growing medium. A typical layout is Woodbine Racetrack, which we designed in 1954. The area of turf is in excess of one million square feet, in comparison to a typical sports field which is in excess of 100,000 square feet. The infield inside the tracks contains approximately ten acres of ornamental turf and infield lakes of ten million gallons of water storage for irrigation. This basic layout is followed in the construction of most new racetracks.

The big improvement in turf courses occurred in the late sixties when research into sand growing mediums proved their designability and were introduced by our firm into tracks such as Turf Paradise, constructed in 1979 here in Phoenix. This track incorporated subsurface irrigation and an improved infield design.

One of the difficulties in turf track design is to control irrigation on the turns which can slope as much as eight feet in 100 feet. Utilizing tests made on the growing mediums enabled the development of the right combination to solve the problems of dryness on the higher parts of the turns.

Another use for all weather designs is in the development of grass parking areas. As long as parking is restricted to afternoons or weekends so that sufficient light is received by the plants, attractive parking areas can be developed. At the Winter Olympics at Lake Placid, the State Parks refused to permit paved parking lots. Over 15,000 spaces were required. The impasse was solved by using grass.

Racing outside of North America went in a different direction than racing in North America where dirt tracks without grass are the norm. Elsewhere in the world, sand tracks without turf are only used for training. Racing is conducted year round on turf in some areas.

Kikuyugrass can be maintained for winter racing. New grass strains and improved maintenance procedures including heating have extended the growing season. Longchamps Race Course in Paris has two turf courses.

Research has led to improvements in many areas. There is a new polymer racing surface at Newmarket, England under rain conditions. The new Equitrack polymer surface has also been used as a growing medium for turf in our tests and can be custom designed for the extended load conditions.

Other new research projects we are completing include fiber and chemical reinforcing for increased strength of turf tracks, playing fields and parking areas, and we expect to have them ready for use soon.

The need for improved materials for sports facilities has been further emphasized by the legal actions which have been brought against many industry groups. We have been working on the coordination of research into the relationship between playing surface and injuries and will be starting two projects which look at this inter-relationship.

First Annual International Sports Turf Conference and Show

Dodgertown - Vero Beach, Florida

Schedule of Events

- | | |
|---|--|
| <p>7:00 p.m. STMA Annual Business Meeting - Mark Hodnick presiding</p> <p>7:30 p.m. Seminar - General Session - Introductions - Dr. Kent Kurtz, Cal Poly University - Executive Director - STMA</p> <p>7:45 p.m. The Future Looks Bright - Mark Hodnick, Cal Poly University - President - STMA</p> <p>8:15 p.m. Dodgertown is my Job - Carol Hall Thomas, Sports Complex Superintendent - Dodgertown</p> | <p>8:45 p.m. Sports Turf in North America - Dr. James Watson, Vice President, The Toro Company - 2nd Vice President, STMA</p> <p>9:15 p.m. The United Kingdom Connection - Dr. Kent Kurtz, Cal Poly University - Executive Director - STMA</p> <p>9:45 p.m. Adjourn</p> <p>10:00 p.m. For The Night Owls - A Brainstorm and/or Bull Session - Informal get-together to throw around ideas, discuss various topics, concepts or techniques - have fun- relax.</p> |
|---|--|

Saturday Morning - January 14, 1989

- 8 a.m. - 1 p.m. Trade Show and Exhibits Open
- 11 a.m. - 1 p.m. Big Dodger Blue Barbeque
- 2 p.m. - 5 p.m. Concurrent Seminar Sessions

Session One

Nuts and Bolts

- 2:00 p.m. Past, Present & Future of Sports Turf
Tom Mascaro - North Miami, FL
- 2:25 p.m. Sports Turf Sod, The In's and Out's of Getting What's Best-Stephen Cockerham - University of California, Riverside
- 2:50 p.m. Techniques in Painting and Marking Athletic Fields - Steve Wightman - San Diego Jack Murphy Stadium
- 3:15 p.m. Injuries and Litigation on Synthetic Turf - Are They For Real? - Dr. James Conn - Valdosta State College, Georgia
- 3:40 p.m. Coffee Break
- 3:50 p.m. Sports Turf Irrigation - A Real Challenge
Sally Prusia - Rain Bird Sales, California
- 4:15 p.m. Soccer Field Maintenance and Construction
John Souter, Stirling, Scotland
- 4:40 p.m. School and College Sports Turf Maintenance - panel - Hansen, Gura, Birch

Bits and Pieces

- 2:00 p.m. Utilizing Native Grasses in Non-sports Areas
Roger Lemke - Wheeling, Illinois
- 2:25 p.m. New Concepts on Construction and Design of Horse Racecourse Turf - Dr. Arthur Read - Don Mills, Canada
- 2:50 p.m. The Maintenance and Care of Lawn Bowling Greens - Jim Paterson - Edinburgh, Scotland
- 3:15 p.m. Effective Communications Can Make You A Better Manager - Patricia Kurtz, Cal Poly University
- 3:40 p.m. Coffee Break
- 3:50 p.m. A New Method and Approach to Surveying Sports Turf - Graham Downs - Stirling, Scotland
- 4:15 p.m. Maintenance of Ball Fields In the Off Season
Tom Burns - Port Charlotte Rangers
- 4:40 p.m. Park and Municipal Sports Turf Maintenance - panel - Schiller, Moll, Weitzel

6:00 p.m. Hospitality Hour - cash bar

7:00 p.m. Annual Awards Banquet

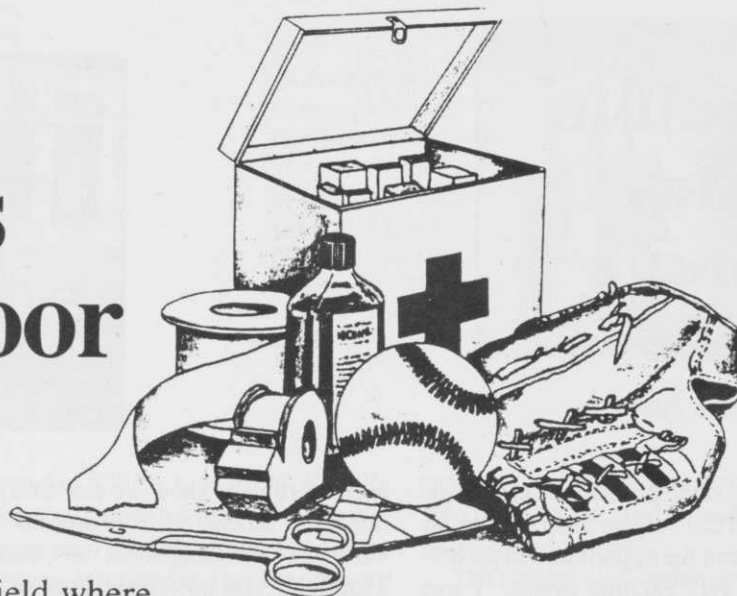
Keynote Speaker - Tom Mascaro, "Growing Grass the Hard Way"

Sunday morning, January 15, 1989

8:00 a.m. - 12 noon - Trade Show and Exhibits Open 11:00 a.m. - 12 noon - "An Hour With the Pro's" - Holman Stadium National League and American League Head Groundskeepers will show special techniques and maintenance demonstrations.

12 noon Conference Ends

The Trophies of Outdoor Sports



Play smart. Play safe with a Turface®-treated field where players won't hurt the field and—more importantly—the field won't hurt the players.

Rebuilding or top-dressing your athletic field with Turface brand soil amendment (a fine-grained mineral earth product) results in a smooth, even, cushiony playing surface which helps prevent bad-hops and errors, minimizing knee/ankle injuries and skin abrasions.



And because Turface actually absorbs practically its own weight in water your field experiences no standing water becoming ready for safer play soon after rain ends.

Further, Turface-absorbed water is retained at turf root-level then released back into the soil as needed, greatly reducing the need for frequent watering during rainless periods.

Turface-treated fields keep your players playing...and playing safer.

Call now or write for information and the location of the Turface distributor nearest you.



APPLIED INDUSTRIAL MATERIALS CORPORATION

ATTN: John Carter
AIMCOR
One Parkway North
Suite 400
Deerfield, IL 60015
(312) 940-8700

Name _____
Org./Co. _____
Address _____
City/State/Zip _____
Telephone _____

An Incredible Journey Among Friends

By Dr. Kent Kurtz

This fall I had the privilege of representing STMA and Cal Poly on a trip to England and Scotland and the opportunity to participate in some very exciting events. I was accompanied on my journey by my 19 year old son, Todd. We had many fine experiences together as well as the opportunity to get to know our hosts with whom we lodged.

From the outset I knew we had some very good friends in the United Kingdom, but it soon became apparent that they were more like family with their warmth, kindness and concern for our comfort. We are very fortunate and thankful for these fine individuals, colleagues and friends who have done so much to help our association and the sports turf movement in our country.

We have established a solid foundation with one of the premier associations in the world, The Institute of Groundsmanship (IOG). We have opened the doors to a mutual exchange of information and ideas on the construction and management of sports turf of all kinds. STMA is very young and still struggling through its infancy compared to the IOG which celebrated its Golden Jubilee in 1984. To know that we are accepted by this professional group as the "Babes Across the Sea" is certainly a great feeling. It



Dr. Peter Hayes, director, Sports Turf Research Institute, Bingsley, England.

is comforting to know we can always confide in the "older brother" organization when we need encouragement or assistance. Thanks IOG for opening up your hearts and homes to us.

Call it fate or merely good fortune, but we spent six nights with a terrific gentleman who has done so much to promote groundsmanship throughout the world. Bob Corbin lives in a cottage surrounded by four acres of beautiful gardens in the village of Stoke Poges, near Windsor. Bob is a past president of the IOG, a retired director of the London Borough Parks, an internationally recognized horticulturist, an excellent photographer and the man responsible for the educational training programs provided by the IOG. He served admirably as our host, chauffeur, guide, and chef during our stay in the London area. Thanks Bob for a very memorable experience.

The day after arriving in London we traveled northward to the Sports Turf Research Institute in Bingley where our good friend, Dr. Peter Hayes is the director. Peter is a dynamic and very personable individual who has done a fantastic job. Recently, he was selected to serve on the USGA Research Advisory Committee as the first person outside of the United States to do so. Congratulations Peter.



Bob Corbin, our gracious host, in his garden next to his cottage at Stoke Poges.

The Sports Turf Research Institute (STRI) was organized in 1929 and is an independent, non-profit organization whose objectives are to carry out research and to provide advice and education in the sphere of sports turf. I was very impressed with the work Peter and his staff are currently doing. Many thanks to him for taking the time to show Todd and I the Bingley area and for allowing us to stay in his home.

From Bingley we drove further north, stopped briefly to photograph a golf course near Settle, where cows graze outside fenced putting greens. We crossed over the border where Hadrian's wall once stretched for miles and entered the land of heather, Scotland; the cradle of golf, old castles, and the home of a very special person, STMA's honorary member, John Souter.

We spent three days with John and his lovely wife, Christine, their children, and John's associates and colleagues. We saw a great deal, shared some wonderful moments and learned so much from this man who I consider the best sports turf consultant and contractor anywhere in the world. We had a glimpse of women's field hockey, and watched a rugby match in which young John



Left to right: John Souter, Christine Souter, and Eddie Connaughton, John's associate, visiting the Stirling Golf Club.



At Wembley Stadium, London. Left to right; Steve Tingley, head groundsman, Barry Pollen, events coordinator and Bill Mills, past editor for IOG Groundsman Magazine.



Left to right; Eddie Connaughton, Dr. Kent Kurtz, Jimmy Paterson, and John Souter, standing where the Queen observes Royal Polo Matches. Souter of Stirling contracts maintenance of turf.

and his school mates played. Then on to Glasgow to look at a beautiful soccer field and watch the Celtics play the team from Aberdeen. We also had the opportunity to visit Gleneagles, the hotel described as "the Scottish palace in the Glens" and its ancient golf course. The new Gleneagles Jackie Stewart Shooting School and the new Gleneagles, Mark Phillips Equestrian Centre, all show the mark or horticultural touch of John Souter. Before leaving Scotland, John's associate, the infamous Eddie Connaughton, the Irishman who graduated from Purdue, hosted us for lunch at the Stirling Golf Club where he is a member. I have yet to collect the money Eddie owes me for the Aberdeen victory over the Celtics, but we will catch up with him when he comes to Anaheim in February for the golf course show.

We returned to London and spent four days with Bob Corbin. I squeezed in a few little side trips to visit London area sports turf facilities. My friend, Bill Mills (retired groundsman and past editor of the Groundsman Magazine) drove me to Wembley Stadium to meet head groundskeeper, Steve Tingley. Then John Warner, Master Groundsman of the Year in 1986-87 and a

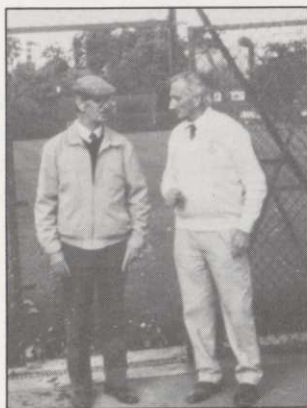
great friend of STMA, took me to Wimbledon to see the famous lawn tennis courts and to meet the head groundskeeper, Jim Thorn. After visiting Wimbledon, I had the pleasure of visiting John Warner's home and the school sports fields he maintains. His house is on the premises of the school in the Wimbledon area. Mrs. Warner, Margaret, a lovely woman, served us afternoon tea and cake and I was overwhelmed by the hospitality.

The Jockey Club of Great Britain sponsored their first maintenance seminar for grounds personnel from 59 racecourses. In contrast to the racetracks in the U.S. where the majority of races are staged on dirt courses, all horse racing in the U.K. is run on turfgrass surfaces. The seminar was held at the Ascot race course and friends John Warner, John Souter and others, along with myself, provided talks on construction and maintenance of turf race courses.

We reconnected with John Souter, who showed us the 10 Royal Polo fields he has contracted to upgrade and maintain (one polo field is equivalent in size to 6 soccer pitches and nearly 10 American football fields). Then we went on a quick jaunt to the estate of former King Edward VIII and his American wife, Wallis Simpson, known as Fort Belvedere. John is renovating a lawn tennis and

croquet court as well as constructing two polo fields for the current land owner, a Canadian businessman.

The last days in London were spent with the IOG and their staff at the Sports and Leisure World Trade Exposition. During the three days of this event, held at the Royal Windsor Racecourse, over 40,000 grounds personnel from the U.K., and many other countries, visited the exposition. By far, it is the most spectacular and largest trade show in the world with well over 400 firms represented. The IOG has sponsored this annual event for 43 years, utilizing volunteer members from throughout the U.K., assisted by the paid office staff of five delightful ladies. Every sports turf manager in the United States should make an attempt to see this trade exposition. The professionalism of these people is simply incredible. I served as an honorary judge of exhibits and was involved in the presentation reception in which the top exhibits were awarded certificates of merit.



Jim Thorn (left), head groundsman, Wimbledon, and John Warner at the All England Croquet and Lawn Tennis Club.



Institute of Groundsmanship-friends of STMA. Back row, left to right; Joy, Derek Walder, Diane, Bob Corbin, Sue, Raymond Johnson. Front row, left to right; Barbara, Eileen, John Warner.

Thanks to all of our friends at the IOG for a most memorable and outstanding experience. I arrived home thrilled, renewed and extremely grateful that I had this opportunity to be with so many wonderful people.

A broad spectrum of proven performers.



Always read and follow instructions on package before using any chemical product.
 *BAYLETON is a Registered TM of Bayer AG, Germany

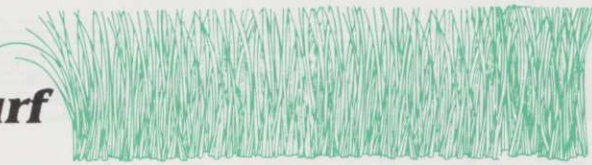
Put your concerns about turfgrass disease to rest with the proven performers from LESCO. Choose sprayable or granular fungicides for preventative and curative control. And for enhanced safety and convenience, LESCO offers several new dispersible granule formulations. The complete line delivers the broad spectrum protection fine turfgrass deserves. All at a competitive price.

If turfgrass disease is the problem, the proven performers from LESCO are the cure. Order now. Contact your LESCO sales representative, visit the nearest LESCO Service Center or call toll free.

LESCO (800) 321-5325 (800) 362-7413
 NATIONWIDE IN OHIO

LESCO, Inc., 2005 Lake Road, Rocky River, Ohio 44116 • (216) 333-9250

Selection of Cool Season Turfgrasses For Sports Turf



The demand on sports facilities by our large, urbanized, leisure-oriented clientele has been and will continue to be dramatic. The fields that serve this clientele must provide good playing surfaces that are safe for the users. Good surfaces are those that are uniform in color, density and texture; those that are capable of being clipped at a suitable height for the particular game; those that are free from pest activity and those that are firm tough and wear-resistant yet sufficiently "giving" to cushion players. Players, coaches, parents and adult users are demanding that these surfaces be safe for the intended activity.

If this seems like a tall order, it is! The answer to the order lies in the basic agronomic practices of choosing the right grass and soil, constructing the facility correctly, then maintaining the turf cover with proper mowing, fertilization, irrigation, coring and thatch control practices. These steps will

fail, however, if fields are overused by too many activities and grooming and recovery time is insufficient.

The turfgrass that is selected for a sports facility is dependent on three primary factors. First, the grass must be adapted to the local environment, with the components of on-site soil and climate taken into consideration. A well adapted species and variety of that species will give a good quality turf of high recuperative ability and a turf of reduced pest susceptibility. Second, the grass selection should account for the use the facility will receive. Specialized sports use as well as intensity of use are important considerations. Third, the intensity or level of management that can be provided should strongly influence grass selection.

With the cool season turfgrasses, tremendous improvements have been made in Kentucky bluegrasses and perennial ryegrass in the recent past. Varieties of excellent

color, texture, density, disease resistance and overall stress tolerance are available. New grasses in these species should be expected to perform well under lower maintenance regimes yet have good wear tolerance and recuperative ability.

Tall fescue has received much attention from breeders in the past few years and the new generation of turf-type tall fescues reflect that attention. The new grasses are of better color, finer texture, higher density, better disease resistance and are capable of tolerating closer cutting heights (although 1-1/2 inch or higher mowing is recommended). Each new generation of tall fescue varieties should continue to improve in quality.

Abstract of talk delivered at Nov. 1987 STMA Annual Meeting in Dallas, Texas by Dr. Victor A. Gibeault, University of California at Riverside.

Coming Events

December 6, 7, 8, 1988

North Central Turfgrass Exposition
Pheasant Run Resort
St. Charles, Illinois
Contact:

Roxanne Dwyer,
Executive Director,
Illinois Turfgrass Foundation, Inc.
435 North Michigan Avenue
Suite 1717
Chicago, IL 60611-4067
312-644-0828

December 6, 1988

Symposium on the Characteristics and Safety of Playing Surfaces (artificial and natural for sports turf). To be held at the Sheraton Phoenix.
For more information and the site of the symposium contact:

Kathy Dickenson
ASTM
1916 Race Street
Philadelphia, PA 19103
215-299-5480

January 9-13, & 16-20, 1989

Cornell University
Turfgrass Short Course
Ithaca, NY
Contact:

Joann Gruttadavrio
Extension Associate
607-255-1792

January 10-14, 1989

Turfgrass Short Course
Mississippi State University
Contact:

Dr. Jeff Krans
Department of Agronomy
P.O. Box 5248
Mississippi State, MS 39762

January 13-15, 1989

STMA-First Annual International Sports Turf Conference and Show
Dodgertown, Vero Beach, Florida
Contact:

STMA
400 N. Mountain Avenue
Suite 301
Upland, CA 91786
714-981-9199

February 9-12, 1989

GCSAA Conference and Trade Show
Anaheim Convention Center
Anaheim, CA
1-800-GSA-SUPT

February 13-14, 1989

Special IOG Sports Turf Tour and Seminar
Sponsored by STMA
If interested, call STMA
714-981-9199 or Cal Poly,
714-869-2218

March 21, 1989

Sports Turf Institute
Cal Poly, Pomona
Contact STMA
714-981-9199

"Influence is what you think you have until you use it."

SPORTS TURF NEWS

Happy 21st Birthday Souter of Stirling



In 1967 the business of Souter of Stirling was founded in Bannockburn, Scotland. John and one helper worked out of an 8'x6' shed with a working capital of \$370. Small contracts such as spraying weeds and repairing goal mouths were the order of the day.

The second office was in an old brewery near the old castle in Stirling, Scotland. Finally, in 1971, the business moved to its present location in an industrial park (Springkerse) in Stirling. The business started to expand when they set up laboratory facilities for soil analysis and site evaluation. The current staff is nearly 30 in number, with three of the staff accumulating almost 60 years of experience among them. The business is one of the leading turf companies in the United Kingdom, with roots and contacts spreading as far as Malta, Spain, Portugal and the United States. Congratulations to John, Christine, Graham, Eddie, Mary and everyone at Souter of Stirling.



Where are they now ?

The 1987 STMA Scholarship Winners

David Arnold is completing his last classes at Cal Poly, Pomona. He spent the summer working with the grounds crew at Anaheim Stadium and this fall is assisting Brian Nofziger with preparation and maintenance of the Los Angeles Rams playing field.

David Mellor completed his studies at Ohio State University and is working as one of the assistants under Harry Gill at Milwaukee County Stadium. David declined a better paying position in Industry to take the job with Harry because he felt the opportunity to learn and gain more experience under the mentorship of Harry Gill far outweighed a higher salary at this point in his career.

Young STMA Members

Our Youngest Member

Pat Sherer is a senior at Stevens High School in Rapid City, South Dakota. Pat is a first baseman on his areas American Legion baseball team (there is no high school baseball in South Dakota). We became acquainted with Pat when he wrote the Chicago Cubs grounds crew about careers in sports turf management. Frank Caparilli and Rodger O'Conner of the Cubs passed the information on to STMA. Recently Pat and his father, Mick, drove out to Cal Poly, Pomona to look over the school and its program in turf management. He met STMA president, Mark Hodnick, spent time with Dr. Kurtz and met with head baseball coach John Scolinos. It appears that Pat may be playing ball and studying turf management in California next year.

Second Youngest Member

Paul Cushing is a freshman at Mt. San Antonio Community College in Walnut, California, where he is studying Ornamental Horticulture-Turf Management. Paul was at our annual meeting in Phoenix two years ago.

Go West Young Man, Go West

Steve Wightman is the new Turf Manager at San Diego's Jack Murphy Stadium. For the past 12 years Steve has been the turf manager at Denver's Mile High Stadium. We wish him the best of luck on his new job.



Wedding Bells in Chicago

Roger Bossard, Head Groundskeeper with the Chicago White Sox, tied the knot recently and is settling down to married bliss and maybe a long, cold Chicago winter.

STMA Director An Aspiring Author



Stephen T. Cockerham, Superintendent of Agricultural Operations for UC Riverside has authored a new publication, Turfgrass Sod Production. Chapters include: 1) Background and History, 2) Administration, 3) Sales, 4) Soil Preparation and Planting, 5) Growing, 6) Sod Harvest, and 7) Distribution.

For a copy contact:

Publications
Division of Agriculture and Natural Resources
University of California
6701 San Pablo Avenue
Oakland, CA 94608-1239
or telephone (415) 642-2431

Refer to publication #21451. Cost is \$12.

New Faces in the Industry



Roxanne Dwyer assumed the position of Executive Director for the Illinois Turfgrass Foundation following the resignation of Russell Schneider.

Robert Reid is the new president of Jacobsen, a division of Textron. Mr. Reid was formerly the vice president of marketing.

Dr. Mark Welterlen has been named the new editor of *Grounds Maintenance* magazine by Intertec Publishing Co. Mark was formerly at the University of Maryland. He replaces Kathy Copely who returned to school to further her education and seek a new career.

Help! Help!

We need your assistance southern California STMA members.

WHEN? February 13 & 14, 1989.

WHY? Our friends from the Institute of Groundsmanship in the United Kingdom are coming to Anaheim for the GCSAA Conference (Feb. 9-12, 1989).

WHAT? IOG members would like to tour local sports turf facilities (Rose Bowl, Santa Anita, Industry Hills, El Prado Park) and have dinner before returning to Anaheim - Monday February 13.

IOG members will present a seminar at Cal Poly, Pomona, on Feb. 11, from 8 a.m. to noon. Presentations include: Parks of Britain, Landscape Gardening, Sports on Grass, the IOG, Horticulture Journalism, and more. Everyone is invited. Lunch and campus tours in the afternoon.

We need drivers, sponsors for coffee breaks and lunch, and assistance in general. Let's show our friends a great time. Please call Kent at 714-869-2176, Mark at 714-869-3049, or Kathy at 714-869-2218.

to last month. There are three essential ingredients in the kicking teams, says Souter — the plan, the talent, the technique. He is a frisky coach who keeps his own special teams play-book.

litary to display the returns team returns squad, and opponents of 40 yards but returns of

power on

active bargaining with the number 192, the register and agents who

light was not favor by they had little a player, an approved by the standard agree-outlining how was entitled to a contract. ment, if an owed by ne-

ould seem to ns, especially me. But the

33 season, the es were repre- ment of whom: current roster, plus an addi- the league we 350 players age draft, Al- ment rookies der with the has made a ed to join the

reflect only a vagaries who players. Ken- weymen con- he had on those ap- ved. light send e said the

And they describes his return-men as the "tricker." For kickoffs it has been judged whether it's the league-leader with an extraordinary 38.5 average. He has run one kickoff back 77 yards for a touchdown, and returned two others for 41 and 40 yards.

When an agent applies for certifica- tion, he or she is sent a questionnaire that resembles a job application. It asks about the applicant's personal and professional background, as well as who else may represent. It is a

On a weekly basis, I might see out 10 or 20 applications," she said that other day from Washington. "It has been just unbelievable. We did not anticipate such a response, and the list jury

This representative, whose applications had been approved.

The enthusiastic are poor bunch of guys if its friends they been long-time because we're k lands."

Until this longest in a g- er, but he has 33 in the against the goals set a points equalled missing his first has been goals and 14 of to last season.

There are ems in the se- quale — the neque. He keeps his own book.

Returns

We tell our as the "tricker" been Bobby leader with average. He has 77 yards for a turned two others just like every yards and is ne in kickoff re- 15, third in but like is worried.

The week- chals are po- bunch of guy practice. The don't go to going to play in making a mista- too tired to do

We Haven't Received Your Dues Yet



"Do Not Squander Time, For Time Is The Stuff Life Is Made Of."

Ben Franklin

Answers to Trivia Questions

1. The first night game in Wrigley Field history was held in Los Angeles, California, April 28, 1961, when the California Angels were tenants. That Wrigley Field has since been torn down.
2. According to Souter of Stirling, if correctly installed by a skilled crew, the most economical method of heating a soccer field with hot water pipes requires 26 miles of pipe.



THE PROFESSIONAL'S CHOICE
... SINCE 1922

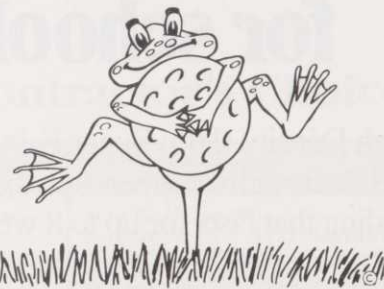
BEAM CLAY IS THE RED BASEBALL DIAMOND MIX USED BY PROFESSIONAL TEAMS ACROSS THE U.S.A. AND CANADA. SPECIAL MIXES FOR PITCHER'S MOUNDS, HOME PLATE AREAS, TENNIS COURTS, BOCCIE COURTS, RUNNING TRACKS AND OTHER FIELD EVENTS.

1-800-247-BEAM

BOTH AVAILABLE IN BULK OR BAGS

PARTAC PEAT CORPORATION, KELSEY PARK, GREAT MEADOWS, N.J. 07838

PARTAC®
GOLF COURSE
TOP-DRESSING



AMERICA'S PREMIUM
TOP-DRESSING

HEAT TREATED

CONTROL THATCH,
PROMOTE HEALTHY TURF
& SMOOTH PLAYING SURFACES

201-637-4191

Rosenblatt Stadium - Home of the College World Series - Jesse Cuevas - Field Supervisor



The College World Series is held in Rosenblatt Stadium high above the winding Missouri River in Omaha, Nebraska. Omaha has hosted 39 of the 42 NCAA College World Series events. The stadium is home to the Omaha Royals, the AAA affiliate of the Kansas City Royals, but also is the home field for the University of Nebraska-Omaha football team, Creighton University baseball and several high school events.

The stadium was constructed in 1949 and recently had a \$3.4 million facelift. Field preparation, due to an intense and varied schedule, receives prime attention beginning March 15 of each year. Since the

College World Series is played over a nine-day period the ground staff is kept extremely busy.

Each spring the field is assessed for winter damage and the first of four complete fertilizer applications are made. Kentucky bluegrass and perennial ryegrass are overseeded and topdressed in April. Kentucky bluegrass cultivars Park and Touchdown are used because of their cool weather tolerance, and cultivars Merion and Adelphi are included because they perform well in the hot and dry weather. After the playing season a second overseeding is used to fill in weak and stress areas.

The key to field maintenance is aerification, which helps reduce field compaction and discourages water logged turf. Following aerification, the field is fertilized and sprayed for insects. The field receives approximately 1" of moisture per week, which is applied using eight 3/4" hoses, which is time consuming. Wetting agents and timely aerification provide the correct moisture levels for the turf.

Mowing is very important to the maintenance at Rosenblatt Stadium. The outfield is mowed at either 1 1/2 or 1 3/4 inches, depending upon the season, with an old Roseman 3-gang unit. The infield is mowed at 1 1/4 inches with a 36 inch reel walk behind mower. Mowing is performed in several directions to achieve a smooth and pleasing playing surface.

The skinned area of the infield has a black dirt base and just prior to the College World Series a supplemental application of sand and calcined clay is tilled into the surface. This encourages air pockets to form, which assist in providing a soft, cushioned bounce. Dragging and working the infield as much as

continued, page 16

It may say "fairway" on the bag, but it's still great for school and sports field turf

High Density (HD) Super Fairway™ and HD Fairway Fertilizers deliver green-up when you want it and a sustained feeding that lasts for up to 8 weeks. Because of the high nitrogen analysis of each, you'll need fewer bags to apply and store, a cost and labor savings.

Ask your ProTurf® Tech Rep for details.





The All-American Pastime is played on an Evergreen lawn.

Sod is the traditional groundcover of choice for America's ball players. And Evergreen Sod is Sox Park's chosen supplier. Evergreen is fast becoming the "Contractor's Choice" sod supplier in the Midwest.

Why? Because our sod product satisfies the traditions of performance and looks. And we offer such traditional business appeals as: quantity, quality and service.

How? Through consistent growing practices and comprehensive marketing. Our network of depots throughout Chicagoland makes it possible for your crews to get fresh sod when they need it on the job site.

We make a second All-American pastime—running a profitable business—an easier job. And that tradition is an All-American winner!

So, join the major league players: specify Evergreen sod, "The Contractor's Choice."

"The Contractor's Choice"

| | |
|----------------------------------|--|
| Red's Garden Center | 3460 Dundee Road Northbrook, IL 312/272-1229 |
| Kroschel's Nursery | 1120 W. Irving Pk. Bensenville, IL 312/766-1661 |
| Long's Garden Center | 11226 South Halsted Chicago, IL 312/785-3129 |
| Saunoris Bros. | 19600 South Harlem Chicago, IL 312/479-9000 |
| James Saunoris & Sons | 6000 W. 111th St. Chicago Ridge, IL 312/422-0972 |
| Golden Gate Nursery | 7848 W. 95th St. Hickory Hills, IL 60457 312/598-3355 |

EVERGREENSOD

Evergreen Sod Farm • Peotone, IL. • 312/258-6100



Rosenblatt, continued

seven times may be necessary to provide a level, smooth surface capable of providing a true hop to the baseball. All turf edges adjacent to the skinned infield are edged to provide crisp straight lines.

Since the income derived from the television rights of the College World Series is vital to the continuation of the event, the NCAA needs assurance that all games will be played, regardless of the weather. If it should rain during the College World Series tarping and untarping of the field becomes very important. Our grounds crew must be careful, precise and quick, so practice sessions are very important. Our best time is one minute, 57 seconds.

Being able to make transitions and caring for the field from one event to the other is the job of a good grounds manager. I consider myself a third generation groundskeeper. My mentor, the late Frank Mancuso, was a great teacher and friend who shared 30 years of his experience and knowledge with me. Frank acquired his skills from his father, Joseph Mancuso, who built the field 40 years ago.

My goals are to continue the quality and tradition that Joseph and Frank worked so hard to accomplish. As a new STMA member I am honored to be included with such an outstanding group of turfgrass professionals. STMA will help all of us to provide a safe, strong and beautiful turf at all levels of recreation and sport.

STMA congratulates new member Jesse Cuevas for a job well done for the 1988 College World Series. Members like Jesse provide the incentive for others to try a little harder and to continually strive for quality.

Terra-Green®

REDUCE RAIN DELAYS!

WITH
THE REDDER, LESS DUSTY
SOIL CONDITIONER & DRYING AGENT
THAT RETAINS MOISTURE
IN HOT WEATHER
AVAILABLE NATIONWIDE
1-800-247-BEAM

ROY G. ZEHREN
PH: (414) 242-5740

STMA
WGCSA

Natural Athletic Turf Inc.
Specializing in

ATHLETIC FIELDS — PARKS — GOLF COURSES
DESIGN • NEW CONSTRUCTION • RENOVATION • CONSULTING

Also
"PURR-WICK" & NAT SAND SYSTEMS
Since 1954

11040 N. BUNTROCK AVE.

MEQUON, WI 53092

Sports Turf Manager's Association Board of Directors

President

MARK HODNICK
Landscape Services
Cal Poly, Pomona

Secretary

TWYLA HANSEN
Nebraska Wesleyan
University

Director

STEPHEN COCKERHAM
University of California
Riverside

Director

ROWLAND LEHMAN, V.P.
Ransomes, Inc.

First Vice President

DAVID FREY
Cleveland Stadium

Treasurer

GEORGE ROKOSH
College of DuPage

Director

HARRY GILL
Milwaukee County Stadium

Past President

STEVE WIGHTMAN
Denver Mile High Stadium

Second Vice President

JAMES R. WATSON
The Toro Company

Director

SAM NEWPHER JR.
Atlanta Braves

Director

MICHAEL SCHILLER
Glenview Park District

Executive Director, Editor

DR. KENT KURTZ
Cal Poly, Pomona

The Sports Turf Manager is published in June, September, December and March by the Sports Turf Manager's Association. Direct all editorial and advertising inquiries to the STMA Editorial Office at 400 N. Mountain Avenue, Suite 301, Upland, CA 91786—(714) 981-9199.

SPORTS TURF MANAGER'S ASSOCIATION

400 N. Mountain Avenue, Suite 301
Upland, CA 91786
714-981-9199

BULK RATE
U.S. POSTAGE
PAID
ALTA LOMA, CA
PERMIT NO. 15¢