

*Here's Your Chance to Have the Best
Book Published on Turf Culture*

The Lawn

BY LAWRENCE S. DICKINSON

Assistant Professor of Horticulture
Massachusetts State College

Defines and Describes the Culture of
Turf in Park, Golfing and Home areas.



The author, Professor Dickinson,
is an international authority on
turf culture

CONTENTS

The General View	Controlling Pests
Molding the Lawn	General Maintenance
Preparation of the Seed Bed	Lawn Mowers
Seed Selection and Planting	Park Turf
Important Turf Plants	Cemetery Turf
Planting a lawn with Stolons	Useful Tables
Fertilizing	

Illustrated

128 pages---Price \$1.25 postpaid
to any address

**The National Greenkeeper
and Turf Culture**

405 Caxton Bldg.

Cleveland, Ohio

LET FUNGOL KICK BROWN PATCH OFF YOUR GREENS



Protect Greens Now with FUNGOL
Keep Positive Control of Turf Disease and Soil Vermin
Adopt the "McClain Economy System"

The existing demand for maintenance economies may be readily met by your usage of FUNGOL this year.

This approved fungicide and vermicide is most effective for prevention and treatment of Brown Patch and other fungous diseases, as well as control of Soil Vermin.

The savings you can make with FUNGOL come from its **LARGE COVERING CAPACITY** for Brown Patch, and its extra vermicidal value for eradication of grubs, beetles, sod webworms, and earthworms. No other vermicides necessary.

Save your Greens and bank account with FUNGOL and the "McCLAIN SYSTEM." Write today for complete details, free Record Charts for your own use, and testing samples of FUNGOL and VEG-E-TONIC.

McCLAIN BROTHERS COMPANY
129 Second Street, Canton, Ohio

VEG-E-TONIC

The soluble "Cool Food" for Putting Greens. Quick and lasting results without burning or streaking. Highest in Nitrogen, Phosphoric Acid and Potash. No "filler", no waste. Leaves no injurious residue on Greens.

OVERCOME NATURE'S WHIMS

*Rain-Fresh Fairways
when you NEED them*

The way to win permanent independence from Nature's haphazard watering of your course is to install an economical sprinkling system for complete regulated irrigation. This takes the matter of alluring fairways, that will secure popularity, into your own hands. Now is the time to plan such an improvement.

Buckner Systems are the leaders for low cost, highly efficient course maintenance. More Buckner Sprinklers and valves are in use on American courses than any other make. Without obligating yourself you may have the Buckner Catalog before you on your desk while you plan. Write for it.

BUCKNER MANUFACTURING CO., Fresno, Calif

Factory Representatives:

P. L. Baldock, 2240 Casitas St., Pasadena.
Gordon Buckner, Athens Athletic Club, Oakland.
Buckner Irrigation Co., 4970 Milwaukee Ave., Chicago, and Bayside, Long Island, New York.

Eastern Engineering Representative:

Wendell P. Miller and Associates, Bayside, Long Island, New York.

BUCKNER

ONE-MAN SPRINKLER SYSTEMS

JUNE, 1933
VOLUME VII—No. 6

Single Copies Twenty Cents
Six Months One Dollar
One Year Two Dollars

The NATIONAL GREENKEEPER and TURF CULTURE

(Registration of title applied for at U. S. Patent Office)

Published monthly at 405 Caxton Building, Cleveland, Ohio.

Contents copyright, 1933, by The National Greenkeeper and Turf Culture, Inc., Publishers.

Entered as second-class matter, Aug. 25, 1928, at the post office, Cleveland, Ohio, under act of March 3, 1879

All Rights Reserved — None of the contents of this Magazine, either wholly or in part, may be reprinted without permission.

ROBERT E. POWER
President and Editor

FRANK H. PELTON
Secretary

M. J. FOX
Treasurer

Contents

THE EDITOR'S CHAIR.....	3	GOLF COURSE NEWS.....	15
IRON SULPHATE.....	5	WHEN SKUNKS ARE VILE.....	16
By Ludwig Erb.....		By W. D. Chinery.....	
PARK AND CEMETERY TURF.....	9	ARKANSAS WANTS BENT GRASS GREENS.....	17
By Professor Laurence S. Dickinson.....		By Merle Zweifel.....	
GREENKEEPERS' PROGRAM OF SELF-EDUCATION.....	11	MARKET PLACE AND BUYERS' GUIDE.....	18
By Professor J. G. Moore.....		TRADE NEWS ABOUT TURF CULTURE.....	21
GREENKEEPERS MEET AT KINGSTON.....	14		
By Professor T. E. Odland.....			

The Editor's Chair

MANY a business man is going to the wheel and rack these days. He is purely the victim of a vicious political system which began to grow after the Civil War and reached its peak a year after the armistice was signed at Versailles.

It's funny to read we shall have no war for ten years. All civilized nations shall disarm. What is going to become of the makers of guns and ammunition? Can they sell their outfits to individuals to shoot docile deer and ducks? What is going to happen to the ship builders? Can they find enough customers in the passenger and mercantile trade to operate their tremendous plants profitably?

* * *

THE wave of public opinion which for many years has been submerged, is sweeping the world. It began in Russia to the horror of those in vested power. Italy took the cue and appointed a dictator. Spain chased the king and queen out of the country. Germany, even in sore straits, said, "to hell with the politicians." Roosevelt too, has given them the boot and made them like it.

England would change her form of government but for her traditional reverence for the Royal family. Yet she has changed immeasurably in attitude

and procedure. Ramsay MacDonald, you know, is a commoner.

* * *

YOU may wonder what all this has to do with turf culture. The fact is that all those who are able to own golf courses, estates, polo fields, etc., are men of means with much at stake. They read this magazine, but the details of turf culture which able and well-informed men write about and we publish, must necessarily be turned over to those in charge of their grounds.

Shall we spend money for seed, fertilizer, equipment and supplies and if so how much? The man who finally has to decide is thinking far and wide. His horizon is not limited by state or even national boundaries. But he must have relief from his business worries.

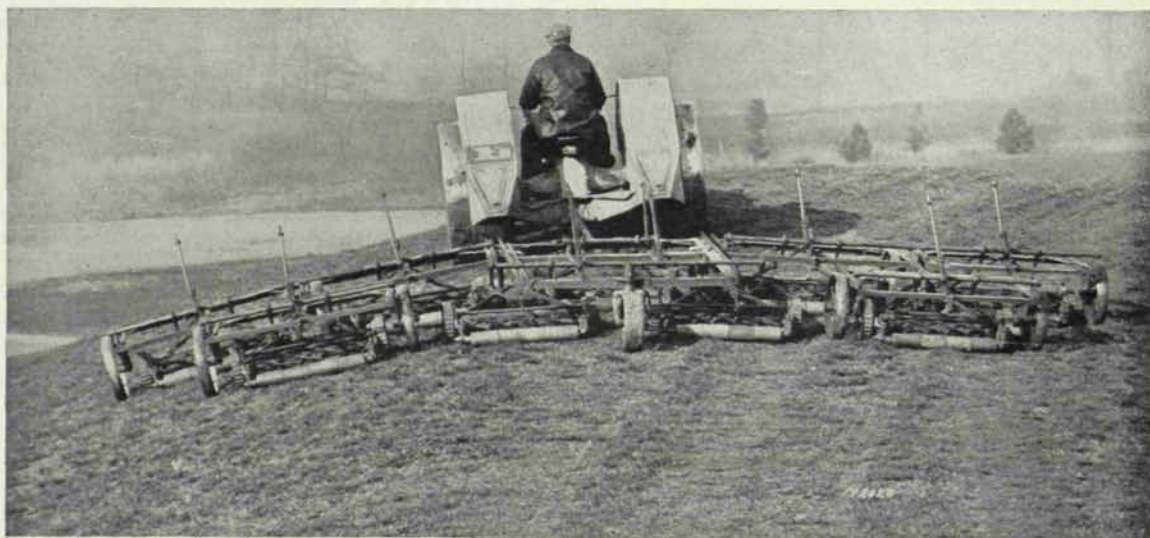
* * *

THERE never was a time when the upkeep of your golf course, your lawn, your flowers and shrubs, and your trees brought greater happiness. Nature soothes the depressed spirit and the worried mind, and of all times men now need that relaxation which Nature can give them and they can well afford to give her care and nourishment.

HERE'S THE LATEST DEVELOPMENT IN FAIRWAY MOWERS

Nine,
Seven,
Five and
Three-Gang
Sizes.

7-Blade
"Bulldog"
Units.]



IDEAL TRANS-PULL FAIRWAY MOWER

LIGHTER! LOWER COSTS! AGILE! WIDE ADAPTABILITY!

The Trans-Pull is the most *adaptable* mower ever born. Unit assembly allows 3, 5, 7 or NINE cutting units—convertible at will, right on the job.

Nine cuts 20½ feet. Weighs only 2,732 pounds. For steep hills or narrow cutting, converts to seven, or five. Seven-gang cuts 16 feet.—five cuts 11½ feet.—three cuts 7 feet.

Each close-coupled, 7-blade Bulldog unit is cleverly hinged to reach into every little hollow—to ride ridges without scalping.

Does a championship brand of cutting. Equally good on all types of turf—blue grass, fescue, bent or bermuda. Handles the hilliest or most rolling fairway.

No gears or clutches to throw out. Levers lift units off ground. For narrow bridges, sections unhook and trail in back. EASY.

You GET MORE with Trans-Pull. Bigger Capacity. Short Turning. Lighter Weight. Less Drawbar Pull. Lower Cost. Three, five, seven, nine-gang—convertible.



IDEAL POWER GREENS MOWER ANOTHER REAL COST SAVER

Safe, smooth cutting assured finest greens. Proved in two years on hundreds of courses—including the finest.

Turns around without danger to delicate turf. Patented clutch control. Quiet, smooth 4-cycle engine. Throttle control, automatic gover-

nor. Has power for heaviest fescue, bent or bermuda greens.

Ideal direct power drive insures smoothness over sharp raises, and eliminates scuffing.

Blades back-ground by power. Pneumatic rubber-tired transportation cart. Brush attachment.

IDEAL POWER LAWN MOWER COMPANY

444 KALAMAZOO STREET, LANSING, MICHIGAN

237 Lafayette Street
New York City

Dealers and Service Stations in all Principal Cities

161 Vester Street
Ferndale (Detroit), Mich.

JUNE
1933
VOLUME VII
NUMBER 6

The NATIONAL GREENKEEPER *and* TURF CULTURE

The only trade journal in the world devoted to the growing of fine turf grasses.

Iron Sulphate

By LUDWIG ERB, *Greenkeeper*

Philipsburg Country Club, Philipsburg, Pa.

Student, Advanced School for Greenkeepers, Massachusetts State College

EDITOR'S NOTE: WE ARE SINCERELY INDEBTED TO MR. ERB FOR HIS EXHAUSTIVE AND ACCURATE DISCUSSION ON THE USE OF IRON SULPHATE IN ITS RELATION TO THE GROWTH AND DEVELOPMENT OF FINE TURF. IT HAS BEEN THE UNIVERSAL BELIEF THAT IRON SULPHATE WAS ONLY USEFUL IN THE ERADICATION OF WEEDS. BUT MR. ERB HAS DELVED MORE DEEPLY INTO THE SUBJECT AND HAS DISCOVERED THROUGH SOURCES OF AUTHORITY THAT IRON IN THE SOIL IS NECESSARY FOR HEALTHY PLANT GROWTH. WE WOULD APPRECIATE AND BE GLAD TO PUBLISH COMMENTS FROM OUR READERS ON THIS SUBJECT.

IRON sulphate (FeSO_4), also called copperas and green vitrol, is, as the chemical formula signifies, a combination of iron, sulphur, and oxygen. In summarizing the available material on the value of iron sulphate in relation to the growth of golf course grasses, we find it being used in two general ways.

In America, iron sulphate is used as an eradicator of weeds. In England, iron sulphate is used not only as an eradicator of weeds, but also as a valuable factor in the production of the fine golf course grasses.

IRON A VITAL ELEMENT TO THE GROWTH OF GREEN PLANTS

IRON is an element of vital importance to the growth of green plants. A certain amount of iron seems necessary as one of the factors in the normal development of chlorophyll (leaf green), although

it is not regarded as a constituent of the organic bodies which make up this substance. Lack of iron is one of the many conditions leading up to pathological chlorosis.

Chlorosis may be described as a disease of the chlorophyll, or the green parts of the plant. Cultural experiments have shown that a plant cannot develop normally in the absence of iron. Artificial chlorosis has been produced in plants living in a soil where iron has been excluded. While the seed may germinate, and the young plant at first grown normally, it later goes into a bad condition unless iron is supplied.

It may be that the lack of iron effects the protoplasmic structures in which the chlorophyll is deposited, for the best evidences point to the use of iron by every living cell, including those organisms which contain neither the pigments nor allied compounds. The absence of green in plants deprived of iron has given rise to the idea that iron takes part in the formation of the chlorophyll, but we are far from knowing what is the role of iron in the formation of chlorophyll. It was once believed that iron entered into the composition of chlorophyll, but this opinion is not entertained at this time.

We therefore conclude, that iron is a vital element to all green plants, that it may be said to be present in all green parts without being absent in the other parts of the plant; that its absence is one

of the many conditions leading up to pathological chlorosis.

An interesting observation by Bourcart, a French scientist, is worthy of citing: "Plants that undergo their classical treatment of Bordeaux Mixture, likewise those which are treated with green vitrol (iron sulphate), acquired vitality which increases assimilation (starch-making function of the plant), and which enabled trees to preserve their leaves longer in the autumn than those untreated."

It has been found that the same dose of iron has a different effect on different types of plants. Plants very fond of water are much more sensitive to iron sulphate than plants not fond of water. Mosses for example, feel the action of iron sulphate more than grasses. It can then be said, that the injurious nature of an application of iron sulphate depends greatly on the nature of the plant to which it is applied. If certain doses of iron sulphate be exceeded, the iron is injurious to the plant, if given in still greater quantity it is mortal.

According to Bourcart, iron sulphate may be used in many different ways. In cultivation it is spread as crystals, or in solutions by watering carts; it may also be mixed with soil and broadcast by hand or machine. To cure trees of chlorosis, the iron sulphate may be sprayed on the plants or injected into the trunks of trees. When used by injection the action is felt much quicker than when it is absorbed by the roots.

ERADICATION OF WEEDS WITH IRON SULPHATE

THE principal use of iron sulphate in America today is to eradicate weeds in turf, particularly dandelions. Experiments have been conducted by many of the State Experimental stations in the use of iron sulphate as a weed spray, and they have met with success with certain weeds.

In New York Experimental station bulletin, No. 466, by M. T. Munn, explains the general method used in the United States to eradicate dandelions from turf. Summarizing the literature on the experiment: "Dandelions can be eliminated from lawns by the use of iron sulphate sprays at very little cost and without material injury to the grass. Four or five sprayings of the iron sulphate solutions are generally required to obtain the desired results. The first spraying should be made just before the blooming period in May, when the plant is pushing out its buds; the other sprays should follow at intervals of

three or four weeks. Spraying should be discontinued in the hot dry weather of the summer. The spraying can be renewed in the late summer and fall. While a conspicuous blackening of the turf will appear following the application of the spray, it will soon disappear."

The spray solution is prepared by dissolving one and one-half pounds to two pounds of iron sulphate in each gallon of water. According to the New York Experimental station, the weaker solution appears to be entirely satisfactory, and probably the one to be preferred. When the solution is used at this strength, the quantity of iron sulphate required for one application is four pounds per 1,000 sq. ft., or approximately 175 pounds per acre. A gallon of solution will cover 375 sq. ft. of lawn.

The degree of effectiveness of the spray on the dandelions has been found to depend to a great extent upon the manner to which it is applied. The best results are secured when the solution is driven in the form of a mist-like spray down among the foliage. While fairly satisfactory results may be expected when the solution is applied with a common sprinkling can, it is recommended that some sort of a spray pump be used. If a poor quality of iron sulphate is being used, it should be strained through a fine strainer or two thicknesses of cheese cloth to remove any particles that would clog up the nozzles of the sprayers.

According to the Massachusetts Experimental station leaflet, No. 78, by O. L. Clark: "Grain fields infested with wild mustard, wild radish, small ragweed, pepper grass, pigweed, shepherd's purse, etc., may be freed from weeds to a large extent by the use of a 20% solution of iron sulphate (100 pounds of iron sulphate to 50 gallons of water). Great care should be used to secure a spraying outfit and nozzle which is adapted to applying the solution in a fine mist. The last cannot be emphasized too strongly because the whole value of the spray lies in its power to reach every part of the leaves, since it is the part of the plant above ground that is killed and not the roots directly.

If the solution is sprayed on in coarse drops it rolls off the plant with little or no effect. Perennial and biennial weeds are much more difficult to control than annuals because of their underground storage organs which are not killed by the spray. It is well to wait until the plants are just beginning to show buds before spraying, for at this time, all the seeds

in the ground will have germinated. It is also of special importance to spray on a clear day, and to spray at a time when fair weather is predicted for a day or two following, since the value of this treatment is much reduced if succeeded in a short time by a shower. It is customary to use 50 gallons of 20% solution of iron sulphate per acre."

IRON SULPHATE KILLS CHICKWEED

IRON sulphate has also been found by the Massachusetts Experimental station to kill chickweed and purslane after repeated sprayings. Heal-all, gill-over-the-ground, broad and narrow leaved plantain, have either been killed or badly injured by the spray. The iron sulphate will not kill crab grass and other weed grasses. It must also be remembered that it is injurious to white clover. Moss in lawns is often satisfactorily eradicated with a 15% solution of iron sulphate at the rate of 50 gallons per acre.

It should be noted here that iron sulphate produces a conspicuous yellowish-brown-rust stain on cement, stone, woodwork, and cloth which is difficult to remove. It should also be remembered, that all metal containers used in mixing and applying of iron sulphate solutions should be thoroughly washed out to prevent corroding.

The New York and Massachusetts Experimental station recommend the supplementing of the spraying operation with fertilizing and seeding of the bare spots recently vacated by the weeds.

USE OF IRON SULPHATE IN ENGLAND

THE following part of this paper is devoted to the use of iron sulphate in relation to the maintenance of golf turf in England. The following information has been obtained from the Journal of Greenkeeping Research, issued by the British Golf Union. The British Golf Union maintains the St. Ives Research station, at Bingley, Yorkshire, under the direction of R. B. Dawson.

Concerning the use of iron sulphate on golf turf in England, Mr. T. W. Evans of the St. Ives station states: "The beneficial effects observed from an application of iron is difficult to explain. The part that iron plays in plant metabolism is vague. Thus it promotes the production of chlorophyll (the green pigments of plants), in grasses and yet is not a constituent of that complex compound. From numerous plots at the Research station, however, it can be seen that the addition of iron sulphate to sulphate of

ammonia induces an acid reaction in the soil; leads to a quicker reduction of weeds; and at the same time imparts a beautiful dark green color to the turf, thus counteracting the chlorotic condition which is often observed when sulphate of ammonia is used alone."

Mr. Evans continues: "The addition of sulphate of iron has also been shown to encourage fine leaved Sheep's fescue in mixed sward (turf), and it is interesting to compare this with the practice of heavily sanding greens with the object of encouraging finer grasses. As previously stated, sanding builds up an infertile top layer while sulphate of iron reduces the fertility of the existing top-spit by tending to make the plant nutrients less available."

In partial explanation of the sanding of greens, mentioned by Mr. Evans, in the above paragraph: It has been found in England that the fine turf grasses, bents and fescues, often grow in infertile acid soil composed of large amounts of sand. They maintain that on many of their best seaside courses, the top four inches of the greens are composed almost entirely of sand and are therefore infertile. The Journal states that this is not a new idea, but simply a tentative suggestion to explain what has long been known to old experienced greenkeepers, that "sand fines down the grass." The Journal states: "Good greens however, cannot be produced simply by sanding, since its action is merely mechanical, and also serves to build up an infertile top-spit suitable to the growth of the finer turf grasses. Having established the finer grasses, they must regularly be supplied with quickly available nitrogenous fertilizers such as sulphate of ammonia, etc."

ECONOMY IN CUTTING NECESSARY

THIS leads us to another peculiar aspect of British greenkeeping which is intimately related to iron sulphate. The St. Ives station is conducting experiments in fertilization and top-dressing to find a method by which a better sward can be produced without resulting in consequent oftener cuttings. To quote Mr. Dawson: "Very few clubs will deny that the best top-dressing for a green is sulphate of ammonia mixed in an adequate compost, but this system is regarded by disfavor in some clubs because of the extra growth, which results in extra cutting. In view of the facts obtained in this preliminary investigation however, it seems possible that the top-dressing with sulphate of ammonia and

sulphate of iron not only results in a good sward, but also a decrease in productivity. The importance of this cannot be too strongly emphasized since frequent cutting is costly."

The St. Ives station has conducted a very interesting experiment in the eradication of weeds on old turf. For purpose of the experiment an old weedy lawn adjoining the station was used. An area 18 square yards was marked off and then divided into three equal plots. The only grass on these plots was A. Tenius (Colonial Bent). The following weeds were present:

Creeping Buttercup
White Clover
Daisy
Mouse-eared Chickweed
Moss (2 species)
Pearlwort
Ribwort plantain (lanced-leafed plantain)
Self-heal (*prunella vulgaris*)
Sheeps sorrel (sour grass)
Yarrow

The treatments were as follows:

Plot No. 1. Check.

Plot No. 2. Sulphate of ammonia and sulphate of iron mixed with one-half ton of soil. Mixture: 150 pounds of sulphate of ammonia per acre, 50 pounds iron sulphate per acre

Plot No. 3. Lime applied one-half ton per acre.

Each plot was treated four times in 1929:

First application, Aug. 8, 1929.
Second application, Aug. 20, 1929.
Third application, Sept. 2, 1929.
Fourth application, Sept. 21, 1929.

The applications were broadcast by hand and no particular precautions taken as to weather conditions. According to the article, eradication of weeds by this method is usually more effective if the applications are made during dry weather. In the case of this experiment however, rain followed the second and fourth applications. No scorching occurred at the above rates of application.

RESULTS OF THE ENGLISH EXPERIMENT

THE results of the experiment in 1929 were as follows: On the sulphate of ammonia-sulphate of iron plot No. 2, the eradication of weeds was complete with the exception of creeping buttercup.

The plants of that weed were small and damaged. Self-heal (*prunella vulgaris*) they found in particular to be very susceptible to the mixture of sulphate of ammonia and sulphate of iron. On plot No. 3, the lime reacted very favorably for the growth of weeds, especially self-heal. The percentage of moss was not decreased by the lime.

During 1930 none of the plots were treated. Plot No. 2, the sulphate of ammonia-sulphate of iron plot, still remained free from weeds with the exception of creeping buttercup, and a few plants of sheeps sorrel that had reappeared. The limed plot was covered with a dense, vigorous mat of weeds, even to a greater extent than the control.

According to other experiments and advisory work completed by the St. Ives station, it was found that in addition to the above weeds mentioned, birds trefoil, red clover, yellow suckling clover, and field speed well may be destroyed in a similar manner. Dandelions and cats ear, while more resistant can be eradicated. Creeping buttercup, mouse-eared chickweed, yarrow and pearlwort have to be placed usually in the resistant class. The St. Ives station also found that iron sulphate applied in excess quantities may cause considerable burning. This effect however, is generally only temporary.

SUMMARY OF MATERIAL COVERED IN THIS PAPER

IN SUMMARIZING the material on iron sulphate covered by this paper we find the following:

- 1—Iron sulphate may be used as a source of iron for plants.
- 2—Iron sulphate may be used as a cure of Chlorosis in plants.
- 3—Iron sulphate will control moss and many kinds of weeds in America.
- 4—In England the addition of iron sulphate to greens has been found to make the topsoil less fertile and to encourage the growth of fine grasses.
- 5—The addition of iron sulphate to sulphate of ammonia has in England been found to induce an acid reaction in the soil; lead to a quicker reduction of weeds; and at the same time impart a deep green color to the turf, thus counteracting the chlorotic con-

Park and Cemetery Turf

By PROFESSOR LAWRENCE S. DICKINSON

Reprinted from "The Lawn" by permission of the publishers, the Orange Judd Publishing Company, and the author, Professor Dickinson.

GOOD turf is as much essential to a park as it is to a golf course, and because of its diversified use requires careful management for each area. Park superintendents should not use the same cultural methods for their park turf as the greenkeepers do for their golf courses, and if a park has a golf course, the necessity for separate maintenance is most essential. Many parks have turf that is in poorer condition than it should be, because the superintendent has tried golf course methods on his lawns.

The greenswards of a park are for unorganized play, lounging, and picnicking, and particularly to add to the general landscape beauty of the park. To clip them as closely and frequently as fairways are clipped is wrong. No "brassies lie" is required, rather, a thick and somewhat long grass is needed to give comfort to the lounge and picnicker, and a short-clipped greensward certainly does not harmonize with the natural beauty of the park. The minimum height of cut in lawn-mowing park greenswards can well be three-quarters or one inch higher than on fairways. A mixture of six parts Kentucky blue grass seed and four parts of Rhode Island or Colonial bent and three parts of Italian Rye grass should make a good park greensward.

In much used sections of a park, and particularly in the shaded areas, the health of the turf does not depend so much upon the soil and fertilizer as it does upon the amount of air in the soil. Constant tramping by the visitors so thoroughly packs the soil that the air is driven out, and the surface rendered impervious to water. A turf in such condition must be aerated by spiking, discing or lifting before much benefit can be obtained from fertilizers.



PROF. LAWRENCE S. DICKINSON

*Massachusetts State College
who is recognized internationally as an expert on turf
culture. We are greatly privileged to publish excerpts
from his wonderful book.*

LIFT THE TURF WITH A SPADING FORK

LIFTING the turf is accomplished by pushing a spading fork deeply into the soil and gently pressing down on the handle. The fork should enter at an angle of about forty-five degrees and deeply enough to be well below the grass roots. Air should be allowed to circulate through the soil for twenty-four hours, after which fertilizer should be applied and the area well soaked. Two liftings a season, one in the spring and again in the late summer will keep a reason-

ably good turf on a much trampled area.

Where the turf is subjected to considerable tramping heavy tractors should not be used to draw the mowers, or if they are, they should be provided with extra wide wheel tires.

No turf can grow about stationary settees, drinking fountains, waste cans or any similar place, and a good park superintendent provides fine gravel or stone chips as a substitute.

Bowling greens and croquet courts require very close and frequent clipping to maintain a good playing surface. They must be fertilized frequently with a high nitrogen fertilizer and at least twice annually with an organic fertilizer.

Croquet courts if built of heavy loam will become very hard unless treated with charcoal (150 lbs. per 1000 square feet) or a similar substance each spring and fall. The bents are the grasses best adapted to bowling greens and croquet courts.

Sport fields require a still different treatment, and here again the turf must not be permitted to become hard and impervious. Football, soccer and cricket fields can be permitted to grow rather long,

but a baseball diamond must be cut closely (one inch). A mixture of four parts Chewings fescue, one part Rhode Island or Colonial bent and one part red top is well adapted for play fields situated on acid or neutral soil.

The "distant," "vista" or "meadow" turf should consist of such grasses as meadow fescue, and meadow foxtail, if the soil is very wet, and red top and meadow fescue on other areas. These grasses if mowed three times a season with a hay mower will give a very pleasing meadowland appearance.

Canadian blue grass can be used in parks to a good advantage on the areas that are hard and clayey. It should not be used alone but with fescue or Kentucky blue grass.

CEMETERY TURF

A CEMETERY turf is the least worked of any public or semi-public turf. With the exception of Memorial Day, traffic is very light, and is never violent. Few divots are taken and it is seldom disturbed except for a new interment. Yet with so little use cemetery turf is not as a rule good, and, like the park turf, the main reason for failure is too close clipping and too little fertilizer or wrong fertilization.

The old-time cemeteries and those of the 90's present a real problem because they are usually situated on thin, worn-out, sandy soil, overlying a gravel subsoil, and exposed to wind and the sun rays. In addition many have the lots raised from eight inches to a foot above the drives and paths, and are maintained with small endowments or smaller municipal appropriations.

The sites for the more modern cemeteries were chosen because of their landscape beauty and appropriateness for the dignified and religious atmosphere. These cemeteries have reasonably good soil, trees to break the drying winds and are void of raised lots or graves. The endowments are sufficient for a good standard of maintenance.

It is necessary that the above statements of facts should be fully understood and appreciated. Also, that the following general rules for cemetery turf culture should be followed with modifications to suit the immediate problem, when one prescribes cultural treatment for cemetery turf.

Turf is very necessary to the cemetery, every one

will agree, and the greener and healthier it is the better.

COVER CROPS FOR UNDEVELOPED AREAS

THE most neglected portion of a cemetery is the undeveloped area, usually grown to weeds, poverty grass or brush. Such areas should be plowed and kept in cover crop until needed for lots. The cost of two cover crops each year with a small amount of fertilizer will pay large dividends later in fine turf and low maintenance cost. Cover crops such as cowpeas, soy-beans, or buckwheat may be grown in the summer and rye during the winter. Such a rotation of crops if grown for a few years will improve the soil, look better than a neglected field and prevent the growth of weeds which might scatter seed on the cemetery turf.

If the sunken walks and drives are filled to a level of lots the drying of the turf will be lessened and the general appearance of the cemetery improved.

Frequent and close clipping of cemetery turf causes it to become open and to lose much soil moisture by evaporation, especially if the turf is growing over gravel or sand. Too close clipping is a common error.

A grass seed mixture that is suitable for the soil should be adopted for the cemetery and no other used. Such a rule will assure uniform texture to the turf and one that can be fertilized the same throughout. Chewings fescue, Kentucky blue grass and Rhode Island or Colonial bent are basic grasses adapted to cemeteries. German and creeping bent are of doubtful value because of the dry soil conditions that usually prevail. They could be used in some of the modern cemeteries that have good soil.

CHOOSE FERTILIZER TO FIT BASIC GRASS

A FERTILIZER program favoring the basic grass that is the healthiest should be adopted and strictly followed. For cemeteries on sandy soil a 6-12-4 fertilizer applied in the spring and fall should give good results.

All leaves and humus should be composted and not burned, for top-dressings of loam or compost are very beneficial to turf on sandy soils. A large compost pile, if it is used, will greatly improve the physical texture of the soil.

No cemetery should be without a large turf nursery to provide turf for patching and the sodding of graves. The nursery should be well kept at

(Concluded on page 20)