

change their greens. It is just too bad that this club got Virginia instead of Washington bent, because it is a sweetheart of a golf course.

* * *

After eating all of Alex's pretzels we went across the way to Meadowbrook, Minneapolis Municipal course number four. Mr. Byrne is greenkeeper and he has certainly done well with his problems. Here are some of them—shortage of help, heavy play, cracks in peat fairways, poor drainage and reconstruction work to do beside maintenance. The course is interestingly laid out and the greens well shaped.

The bent is cut closely every other day with a power mower. The cracks in the fairways have been filled with peat most likely because lots of peat is available and because peat will expand and fill cracks well. There is a difference of opinion on this and it will be educational to watch Byrne's success.

* * *

This course has a tee problem like every other public course. The players pay no attention to markers and shoot from the front of the tee until the grass is all gone. They continue to shoot from bare ground rather than sacrifice a yard of length by moving on to good turf. Byrne keeps improving the course all the time and works hard keeping it in good condition.

* * *

They have reduced playing rates on his course and he is getting plenty of sand green golfers. The first Sunday after rates were reduced nine divots were taken out of a green. That is hard on a greenkeeper and adds to upkeep.

* * *

Byrne and Repin are fine hosts and the meeting was very worthwhile. The next meeting will be held Monday, June 13, at Woodhill Country Club.

Oklahoma News

By MERLE ZWEIFEL

BIGGER and better golf courses are in prospect for Oklahoma golfers if the intentions of the Green chairmen and greenkeepers are carried out.

Sapulpa, Oklahoma, has just started construction on its new nine-hole municipal layout—work on two new municipal courses was started last month in Oklahoma City—C. S. Avery is building greens for an 18-hole commercial course northeast of Tulsa, and the Tulsa park board have laid plans for the construction of an 18-hole course at Mohawk Park with greens to be planted to bent grass to replace the sand greens on the course now in use.

And the new Woodlawn Park course at 36th and Lincoln Streets at Oklahoma City will be opened for play within the next few days with brand new Cocos bent grass greens.

HUBBARD NURSERIES CREEPING BENT STOLONS

Washington and Metropolitan Strains

Pure, free of weeds, and of one season's growth

DR. AMOS F. HUBBARD, N. Kingsville, Ohio

The Capitol Hill Golf Club of Oklahoma opened last week with a nine-hole grass green course which will be operated on a fee basis by Pard Wood, owner of the club. Jake Veal, veteran Oklahoma greenkeeper, will have charge of maintenance.

* * *

That the older clubs of Oklahoma have shamefully neglected their fairways during the last few years was "plain talk" at the recent meeting of the Tulsa District Association and greenkeepers which was held at Indian Hills last week. It was estimated that 95% of the clubs in Oklahoma never allow one cent for fairway fertilization and turf development when planning their future budget.

Last year a prominent club in central Oklahoma built a club house at a cost of approximately \$90,000.00. The services of a well-known golf architect were obtained to lay out a beautiful golf course. Thousands of dollars were spent on the soil structure and proper drainage of the greens and other thousands were spent in an effort to obtain a soft, velvety putting surface. But the directors of that club seemed to forget that the average golfer spends a considerable portion of his time on the fairways.

Since the opening of that course not one cent has been spent on the fairways except for mowing and general maintenance. Such conditions prevail at almost every club in Oklahoma and it seems that in the majority of cases fairways are never given a thought. When club chairmen realize the fact that good fairways are as important as greens or tees to members who play a good game of golf, then will Oklahoma courses be running a close second to those "up north."

Elizabeth, Ill.

Golf enthusiasts of this town and vicinity recently formed a golf organization in the K. P. hall. Plans are being made now for building of links here, to be located on the Burl J. Reed farm.

Kent, Wash.

Considerable improvements are under consideration on the Mountain View Golf course, and Francis L. James, famous golf course builder has been engaged to make plans at once. This is an 18-hole course.



NACO will make your fertilizer dollars pay dividends in improved turf. If unable to secure NACO from your Golf Supply House write direct to the manufacturers.

NACO
"A GOLF COURSE FERTILIZER"

NITRATE AGENCIES COMPANY
104 PEARL STREET - NEW YORK CITY

Eastern New York Greenkeepers Organize

By JACK GORMLEY, *Greenkeeper,*
Van Schaick Island Country Club, Coboes, New York

THE first meeting of the North-eastern New York Greenkeepers' Association was held on Wednesday, May 11, 1932, at the Ten Eyck Hotel, Albany, N. Y. Dinner was served before the meeting and about fifteen prospective members enjoyed a repast that was excellently served and it helped to create a feeling of comerraderie necessary to the organizing of a new section.

After retiring to the conference room later, approximately ten greenkeepers who could not be present at dinner joined the assembly swelling the number present to twenty-five. Mr. George Pulver of McGregor Links, Saratoga Springs, N. Y., acted as temporary chairman of the gathering.

Jack Gormley, greenkeeper at the Van Schaick Island Country Club and district vice-president of this section, recently appointed by Col. John Morley to act in that capacity, was the first speaker. He pointed out the benefits to be derived by organizing and helping one another to thrash out the problems confronting the greenkeepers today, and showed how necessary such co-operation was in the face of present economic conditions. He read the

by-laws of the National association and they were enthusiastically received and adopted as read.

John Melville, builder of the Troy Country Club, was to have been the next speaker but illness prevented him from being present. Jim Thompson of Mohawk Golf Club, Schenectady, N. Y., was very sincere in his remarks on co-operation among greenkeepers and lauded the National Greenkeeper Magazine for its worthwhile contents. Otto J. Swennson, Toro Manufacturing Co., also made a few remarks.

It was then voted to name this new branch the North-eastern New York Greenkeepers' Association, and to hold periodical meetings at least once a month.

John Melville of the Troy Country Club was elected the first president; Jack Gormley, first vice-president; T. Roy Smith of Stamford Country Club, 2nd vice-president; C. S. McBride of Edison Country Club, Secretary-Treasurer.

Others present included, John Lord of Antlers' Club, Amsterdam, N. Y., E. A. Nash of McGregor Links, M. A. Newton of Schuyler Meadows, Bill Bowman, Schalren Country Club, Jack Aussiker, Mohawk Golf Club, George Clewes, Catskill Country Club, Alec McIntrye and Bob Mitchell of Edison Country Club, R. J. Cullen, Albany Municipal Course, Alex Tallman, Schalren Country Club, Floyed Nelson, Sacandaga Park, Jerry Stack and W. J. Collier, Cobleskill Country Club, Scott North, Normandside Country Club, and Tom Goodman.

Still others who have signified their intention of joining and becoming members are: J. Louis Gregory of Wolferts Roost, Mike Onkosh of Mechanicville Golf Club, Eddie Brown, Shaker Ridge, Tim O'Connell, Luzerne Villa, Leo Gill, Columbia Country Club, and R. C. Blase, Schenectady Country Club.

The next meeting will probably be held at the Mohawk Golf Club, or the Van Schaick Island Country Club.

Durango, Colo.

Work on the municipal golf course has just been started, according to announcement of President H. H. Jeffrey, of the Animas Golf Club.

Lincoln, Nebr.

Work has started on the 18 new greens of the Pioneers' Park Golf course and it is anticipated that same will be ready for play early part of June.

Aneta, No. Dak.

Plans are about completed for a nine hole golf course, according to meeting just held at the Aneta Commercial Club. The committee in charge is Dr. E. L. Grinnell, L. Hanson and W. S. Schley.

When Discriminating Greenskeepers Themselves Conduct the TEST

—then is when actual performance in mowing has its inning—then mere TALK does not count, but actual PERFORMANCE. Jacobsen revels in such tests—tests involving hand mowers and ALL other makes of power putting green mowers—ALL of them—tests of speed and EXCELLENCE of work. When greenkeepers do THIS

—they Buy the JACOBSEN

Hundreds of instances substantiating this statement are recorded. The greens brush attachment improved greens with every cutting—time reduced one-half, reports Hillcrest Country Club, of Los Angeles.

Complete satisfaction, greater speed, very small maintenance

costs, reported by U. S. Golf Association, Green Section.

Used on bent grass, made greens smoother than hand mowers, in one-fourth time, says Jefferson City, (Mo.) Country Club. Saved \$350 in one season (one Jacobsen mower) for Surprise Park Golf Club, Cedar Lake, Ind.

FREE Demonstration Anywhere Any Time

Name the place and the date. We challenge comparison. Remember, the Jacobsen Power Putting Green Mower is more than a mower. It is a greens conditioner. Greens brush and power transport optional equipment. Sales and service everywhere. Write for catalog and terms.



JACOBSEN MFG. CO., Racine, Wis.

JACOBSEN
BUILT TO SAVE RUNNING EXPENSE

Give the Greenkeeper a Chance

—An Editorial

By ROBERT E. POWER

Editor, The National Greenkeeper

GRASS is a living thing. Golf club officials must not think of golf course maintenance in the same way they consider other departments of the club because these departments deal with fixed inanimate things that may be arranged for in advance.

One may never know on the golf course what will happen from day to day. Climatic conditions change almost hourly and the greenkeeper with his millions of growing "children" must nurse and feed them as the need arises if they are to thrive and grow and furnish pleasure and comfort to the golfers who play over his course.

Grass, like other growing things, sometimes gets sick. It is subject to the vagaries of nature because it is exposed to whatever weather may come to visit it. The greenkeeper who is the shepherd of his grass plants, cannot prevent their exposure to the elements—he can only provide the strength and resistance they need to keep their heads up and smile in the faces of the golfers who cross their doorsteps every day.

The wise greenkeeper is an Edison—he is never satisfied with what was done the day before. He must study conditions and experiment to improve them. His is a daily problem ever changing, ever entrancing, ever calling for initiative, intelligence, and courage to try new methods that may bring his golf course nearer perfection with a saving in labor and material.

Give the greenkeeper a chance. If he has the vision to make his job a success he will be the golf club's greatest asset. If he fails that is his fault. But if the club officials give him no chance it's the club's fault.

Market Place and Buyers' Guide

Where reputable manufacturers and dealers list and describe their products. Greenkeepers are requested to write the Market Place for any special information they desire about supplies or equipment

Airport Drainage

Armco Culvert Mfrs. Association
Wendell P. Miller and Associates

Ant Control

Royal Products Company

Ball Washers

J. Oliver Johnson, Inc.
Worthington Mower Company
Ideal Power Lawn Mower Co.
G. B. Lewis Company

Ball Locators

Worthington Mower Company

Bent-Coos County State Sealed and Certified

J. M. McCullough's Sons Company
Seaside Bent Company

Bent Seed—Cocoas Creeping

Stumpp & Walter Company

Bent Seed—Prince Edward Island

J. M. McCullough's Sons Co.

Bent Stolons

Hubbard Nurseries
O. M. Scott & Sons Co.
Stumpp & Walter Co.
Ohio Humus Products Co.
Illinois Grass Co.
Hiram F. Godwin
Lyman Carrier

Bluegrass—Seed

J. G. Peppard Seed Company

Brown Patch Control

Stumpp & Walter Co.
J. Oliver Johnson, Inc.
Arthur D. Peterson
American Cyanamid Sales Co.
C. B. Dolge Company
McClain Bros. Co.

Charcoal

Cleveland Charcoal Supply Company

Cocoas

Lyman Carrier
Stumpp & Walter Company

Compost Distributor

Toro Mfg. Company
The Root Mfg. Co.

Compost Mixer

Toro Mfg. Company
Royer Foundry & Machine Co.
Beardsley & Piper Company
Silver Mfg. Company
Kemp Mfg. Company

"Everything for The Golf Course"

Write for Catalog

ARTHUR D. PETERSON

420 Lexington Avenue
NEW YORK CITY, N. Y.

ADVERTISERS' INDEX

American Cyanamid Company	Cover
Atkins & Durbrow, Inc.	8
Bayer-Semesan Company	7
Buckner Mfg. Company	15
Budd Mfg. Company	20
Dolge, C. B., Company	11
Economy Irrigation Company	13
Fate-Root-Heath Company	17
Garden Supply Company	17
Horner, R. S.	25
Hubbard Nurseries	21
Ideal Power Lawn Mower Company	4
Illinois Grass Company	19
Jacobsen Mfg. Co.	22
Johnson, J. Oliver, Inc.	13
McClain Brothers Company	10
Milwaukee Sewerage Commission	19
Nelson, R. R. Mfg. Company	11
Nitrate Agencies Company	21
Pennsylvania Lawn Mower Works	Cover
Peterson, Arthur D.	24
Royal Products Company	26
Ryan, Dan F.	14
Scott, O. M. & Sons	17
Stande, E. G., Mak-A-Tractor Company	15
Stumpp & Walter Company	16
Toro Manufacturing Company	Cover
Worthington Mower Company	Cover

Compost Screen

Silver Mfg. Company

Cultivators (Disc)

John H. Graham & Co.

Cultivators (Spike)

John H. Graham & Co., Inc.

Drainage Engineers

Wendell P. Miller and Associates

Dump Carts

Toro Mfg. Company
J. Oliver Johnson, Inc.
Worthington Mower Company
Peter Henderson & Co.
Ideal Power Lawn Mower Co.

Fairway Fertilizers

Synthetic Nitrogen Products Corp.
Armour Fertilizer Works

Fairway Irrigation

Buckner Mfg. Co.
Campbell Irrigation Company
Economy Irrigation Company
L. R. Nelson Mfg. Company
Double Rotary Sprinkler Co.

Fairway Mower Blades

The Budd Mfg. Company

Fairway Mowers

Pennsylvania Lawn Mower Works
Toro Mfg. Company
E. G. Staude Mak-A-Tractor Co.
Ideal Power Lawn Mower Company
Worthington Mower Company
The F. & N. Lawn Mower Co.
National Mower Company

Fairway Tractors

International Harvester Co., of America

Fertilizers

Milwaukee Sewerage Commission
J. Oliver Johnson, Inc.
Peter Henderson & Co.
Nitrate Agencies Co.
Atkins & Durbrow, Inc.
Arthur D. Peterson
American Cyanamid Sales Co.
Lyman Carrier Company
Bayer-Semesan Company
Synthetic Nitrogen Products
Wayside Gardens Company
Armour Fertilizer Works
Cobwell Reduction Co.
Garden Supply Company

Fertilizer Distributors

International Harvester Co. of America
Synthetic Nitrogen Products Corp.
The Root Mfg. Co.

Flag Poles

Ideal Power Lawn Mower Company
Standard Mfg. Company

Flexible Steel Mats

J. Oliver Johnson, Inc.

Fungicides

Bayer-Semesan Company, Inc.
Sherwin-Williams Company

Fairway Rollers

Toro Mfg. Company
Philadelphia Toro Company
Worthington Mower Company

Golf Architecture

Charles Evans, Jr. and Associates

Golf Course Construction

Ohio Humus Products Co.

Golf Equipment

Stumpp & Walter Co.
Peter Henderson & Co.
Arthur D. Peterson
Ideal Power Lawn Mower Co.
Lawn Equipment Corp.
T. W. Wood and Sons
Worthington Mower Company

Golf Flags

Ideal Power Lawn Mower Co.
Stumpp & Walter Company
Peter Henderson & Co.
Arthur D. Peterson
Philadelphia Toro Company

Grass Seeder

The Root Mfg. Co.

Greens Fertilizers

Armour Fertilizer Works
Synthetic Nitrogen Products Corp.

Greens Sprinklers

L. R. Nelson Mfg. Co.
Buckner Mfg. Co.
Double Rotary Sprinkler Co.
Dan F. Ryan

Hand Mower Blades

Budd Mfg. Company

Hole Cups

Standard Mfg. Company

Hole Cutters

Ideal Power Lawn Mower Co.
Lawn Equipment Corp.
Standard Mfg. Company

Market Place and Buyers' Guide---

Hole Liners

Chilton Crocker Company

Hole Rims

Ideal Power Lawn Mower Co.
Arthur D. Peterson

Horse Drawn Mowers

Pennsylvania Lawn Mower Works
Worthington Mower Company
International Harvester Co. of America
Ideal Power Lawn Mower Co.
Roseman Tractor Mower Co.

Hose

Peter Henderson & Co.
Arthur D. Peterson

Humus

Hyper-Humus Company
Ohio Humus Products Co.
Peter Henderson & Co.
Atkins & Durbrow, Inc.
Garden Supply Company

Insecticides and Fungicides

American Cyanamid Sales Co.
Sherwin-Williams Company
Bayer-Semesan Company

Iron Pipe

McWane Cast Iron Pipe Co.

Lawn Mowers

Pennsylvania Lawn Mower Works
Toro Manufacturing Company
Worthington Mower Company
Ideal Power Lawn Mower Co.
The F. & N. Lawn Mower Co.
Jacobsen Manufacturing Company

Lime Spreaders

International Harvester Co. of America

Mower Blades

The Budd Mfg. Co.

Mowing Equipment

E. G. Staude Mak-a-Tractor Co.
Toro Mfg. Company
Pennsylvania Lawn Mower Works
Ideal Power Lawn Mower Co.
Worthington Mower Company
Arthur D. Peterson
International Harvester Co. of America
Roseman Tractor Mower Co.
The F. & N. Lawn Mower Co.
Jacobsen Mfg. Company
National Mower Company
Philadelphia Toro Company

Motor Trucks

International Harvester Co. of America.

Mower Sharpeners

Fate-Root-Heath Company
Toro Manufacturing Company
Henry H. Doty
Palmer-Bee Company

Nitrophoska

Synthetic Nitrogen Products Corp.

Peat Moss

Atkins & Durbrow, Inc.
Richard Gertstell

Perforator

Philadelphia Toro Company
J. F. Buel

Poa Annua

J. M. McCullough's Sons Co.

Power Mowers

Cooper Mfg. Company
Toro Manufacturing Company
Worthington Mower Company
International Harvester Co. of America.
Jacobsen Mfg. Company
Ideal Power Lawn Mower Company

Putting Cup Illuminators

Chilton Crocker Company

Putting Green Mowers

Toro Mfg. Company
Pennsylvania Lawn Mower Works
Worthington Mower Company
Cooper Mfg. Company
Ideal Power Lawn Mower Co.
Roseman Tractor Mower Co.
The F. & N. Lawn Mower Co.
Jacobsen Mfg. Company

Power Putting Green Mowers

Jacobsen Mfg. Company
Worthington Mower Company
Ideal Power Lawn Mower Company

Rakes

Pennsylvania Lawn Mower Works

Rhode Island Bent Seed

A. N. Peckham

Rollers (Hand)

John H. Graham & Co., Inc.
Stumpp & Walter Company

Rollers (Fairway)

John H. Graham & Co., Inc.
Toro Mfg. Company
Worthington Mower Company

Rollers

Stumpp & Walter Company
Toro Mfg. Company
Worthington Mower Company

Rough Mowers

Toro Manufacturing Company
Pennsylvania Lawn Mower Works
Worthington Mower Company
Ideal Power Lawn Mower Co.
Roseman Tractor Mower Co.
Jacobsen Mfg. Company
Philadelphia Toro Company
International Harvester Company
Gravelly Mower & Cultivator Co.

Seaside Bent

Seaside Bent Company

Seed

Henry A. Dreer
O. M. Scott & Sons Co.
J. Oliver Johnson, Inc.
Stumpp & Walter Co.
A. N. Peckham
Peter Henderson & Co.
J. M. McCullough's Sons Co.
Illinois Grass Co.
Arthur D. Peterson
J. G. Peppard Seed Company
Lawn Equipment Corp.
Philadelphia Seed Co.
Henry A. Dreer
T. W. Wood & Sons
Seaside Bent Company
Lyman Carrier

Signs

Standard Mfg. Company

Sod Cutters

J. Oliver Johnson, Inc.
Pacific Greenkeepers' Appliance Co.

Sprayers

Hardie Mfg. Company
Friend Mfg. Company

Sprinklers

L. R. Nelson Mfg. Company
Buckner Mfg. Company
Economy Irrigation Company
Pelican Works
Campbell Irrigation Company
Double Rotary Sprinkler Co.
Dan F. Ryan

Spuds

Diamond-Calk Horseshoe Company

Stolons

O. M. Scott & Sons Co.
Hubbard Nurseries
Hiram F. Godwin
Lyman Carrier

Sulphate of Ammonia

Synthetic Nitrogen Products Corp.
Koppers Products Company

Tee Markers

Standard Mfg. Company

Tee Mowers

Toro Manufacturing Company
Pennsylvania Lawn Mower Works
Worthington Mower Co.
Ideal Power Lawn Mower Co.
Jacobsen Mfg. Company

Tee Stands

Worthington Mower Co.

Tillage Implements

International Harvester Co. of America

Top Dressing

Hyper-Humus Company
The Ohio Humus Company
Atkins and Durbrow, Inc.
Richard Gertstell

Top Soil Dresser

Beardsley & Piper Company

Tractors

E. G. Staude Mak-A-Tractor Co.
Toro Manufacturing Company
Worthington Mower Co.
International Harvester Co. of America
Ideal Power Lawn Mower Co.
Roseman Tractor Mower Co.
R. S. Horner
Gravelly Mower & Cultivator Co.

Tractor Wheels and Spuds

R. S. Horner

Trees

Blue Ridge Evergreen Supply Co.

Turf Fertilizers

Armour Fertilizer Works

Urea

Synthetic Nitrogen Products Corp.

Water Pipe

McWane Cast Iron Pipe Co.

Worm Eradicators

Peter Henderson & Co.
C. R. Dolge Company
Reade Mfg. Company

R. H. WHEELS are stronger For all Fordson Tractors



Rims do not bend—50% better traction—rounded edges—easier steering. Hundreds used for replacing old, weaker wheels. Sold in singles, pairs or full sets. Several sizes. Immediate shipment.

Prices Reduced

R. H. Tractor Wheel SPUDS

quickest to put on or take off. Doubles traction and cultivate turf . . . that's why more than half the U. S. and Canadian clubs use them. Durable and low priced. All sizes for all purposes. Sample spud and circular on request; advise make of tractor and purpose for which intended.

If your Ford or equipment dealer cannot supply, write direct to



R. S. HORNER, Manufacturer

GENEVA - - - OHIO

Immediate Shipment

Prices Reduced September 1st.

ANT-TEE-ANT

will keep new-cut Greens free of ant hills and worms and not injure turf.
Trial order to make fifty gallons.

**\$7.00 delivered or buy
it of your dealer**

Satisfaction or Money Refunded

The Royal Products Co.
214-216 S. Charles Street
BALTIMORE - MARYLAND, U. S. A.

A New Worthington Agent

The Worthington Mower company, announces the appointment of Mr. Marshall L. B. Hawes, as its New England representative with headquarters at 1 State Street, Boston, Mass.

Mrs. E. R. Sawtelle, formerly in charge of the New England territory, is now located in the home office at Stroudsburg, Pa.

New Jacobsen Mower

The Jacobsen Mfg. Company, 735 Washington Avenue, Racine, Wisconsin, has developed a new 32-inch heavy duty mower with twin motors, which is especially designed for lawn maintenance of parks, cemeteries and estates, as well as golf course and school and college grounds. For these purposes this new twin with the gang attachment is ideal and will mow two and a half acres an hour with one man.

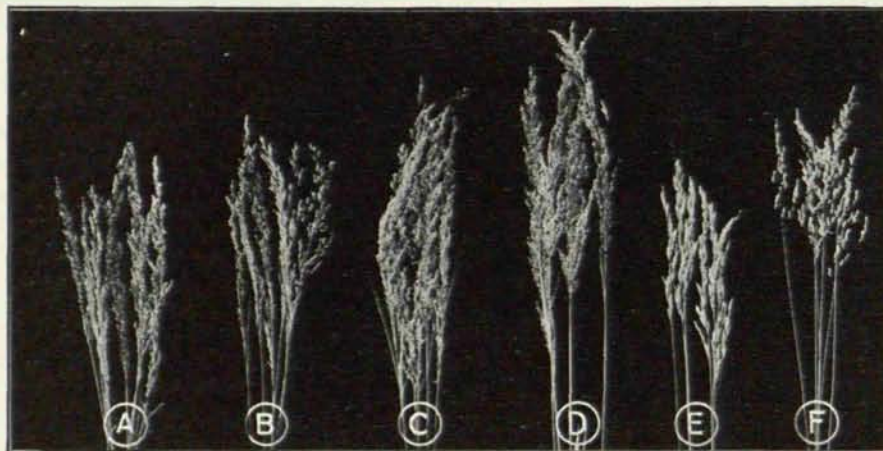
It is sized and powered for quick mowing; particularly of lawns too large for the economical use of several average width power mowers, yet too small for low cost operation of heavy fairway equipment.

The operation is simple as it is completely controlled



NEW JACOBSEN HEAVY DUTY MOWER

This is a 32-inch cutting unit with twin motors which may be equipped with gang attachment when desired. The latter cuts a sixty-six inch swath. It is fast and easily handled.



A FEW OF THE PRINCIPAL GOLF COURSE AND SPORTS TURF GRASSES

A.—Creeping Bent.

B.—Rhode Island Bent.

C.—Colonial Bent.

D.—Red Top Fancy.

E.—Chewings Fescue.

F.—Kentucky Blue.

from the steering handle. Separate clutches operate the cutting and traction units. It cuts close to trees, shrubbery and flower beds and will turn within its own radius under power without scalping or scuffing the turf. It has two-speed transmissions, thus offering both high and low speed operation.

This new mower cuts a 32-inch swath with sulky and a 66-inch swath with the gang. Built into it are all the sturdiness, precision workmanship and refinements which have established Jacobsen leadership, and in addition, new construction features and operating advantages.

Handsomely illustrated catalogue will be mailed without charge to readers of the NATIONAL GREENKEEPER who write for it.

Sports Turf

A splendid new catalogue with the above title has recently been issued by Peter Henderson Company, 35 Cortlandt Street, New York City.

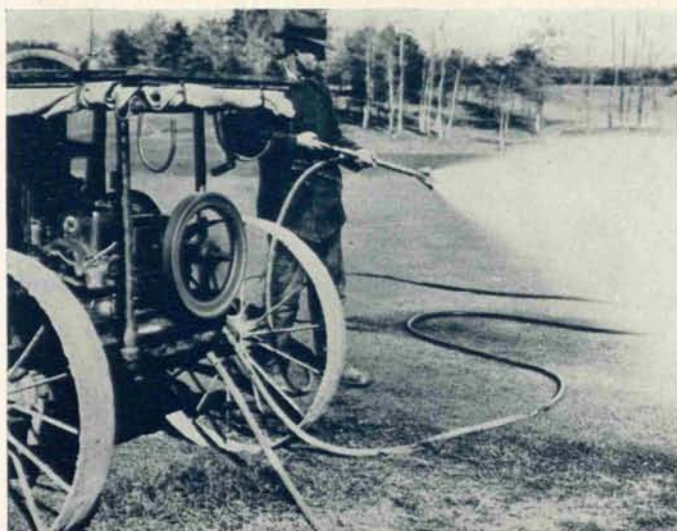
This catalogue is filled with interesting information for growers of fine turf and includes a complete display of supplies and equipment which have been carefully selected to meet the most particular requirements.

An interesting feature is a reference table for fertilizers used on golf courses and athletic fields. All the well-known fertilizers are listed and tabulated as to analysis and the necessary amount to use for different areas. The proper time to use them is also given.

This company has a nation-wide reputation for the quality of its grass seeds. In this new catalogue the various kinds of grasses are carefully described in accurate abbreviated form. The fact that it is not technical gives it a great appeal.

The company will be glad to mail without charge, a copy of "Sports Turf" to those readers of the NATIONAL GREENKEEPER, who are interested enough to write them.

At the first sign of BROWN PATCH apply Barbak



To banish Brown Patch from your greens—or to prevent it—use Barbak.

It's safe. You can water it in or apply it as a top dressing. In neither case will it burn the turf.

It's easy to use. It's odorless, mixes easily, doesn't cake in the can.

It's effective. As a preventive, it keeps greens smooth and velvety, free from Brown Patch. As a cure, it not only checks the fungus growth immediately, but also quickly brings back a normal stand of turf.

Check up these Barbak advantages on your own course. You can buy Barbak through any reputable golf supply house. If you cannot get Barbak locally, write us for the name of your nearest distributor.



AMERICAN CYANAMID SALES CO., INC.
535 FIFTH AVENUE NEW YORK CITY

211 Barbak XX
TWO ELEVEN DOUBLE XX

USE WHERE THE SOIL
FERTILITY IS LOW

USE WITH A BALANCED
FERTILIZER PROGRAM

TURF DISINFECTANT

The 6-cylinder PENNSYLVANIA
Tractor pulling the
PENNSYLVANIA Fairway Quint
(quickly convertible)



A new worm drive PENNSYLVANIA Tractor

Silent, powerful and with a maximum speed of 24 miles an hour, the 1932 PENNSYLVANIA Tractor is unequalled in its field. It has worm drive on rear axle and the 60-horsepower engine delivers over 700 horsepower at rear wheels at full speed.

With first and second gears for heavy work and high gear for light work, this tractor is for all around service. It comes with or without steel dump body of one cubic yard capacity.

The PENNSYLVANIA Tractor with PENNSYLVANIA Unbreakable Mower Units in gangs of 3, 5, 7 or 9, is unexcelled for cutting fairways and rough.

The PENNSYLVANIA Super Roller Greens Mower is now equipped with eight blades.

The other PENNSYLVANIA greens mower, the Aristocrat, 7 blades, and the Tee mower, 6 blades, are now built of aluminum, which makes them much lighter in weight and easier pushing.

*Write for complete catalog featuring
greens, tee and fairway mowers.*

PENNSYLVANIA LAWN MOWER WORKS
Primos, Delaware County, Pa.