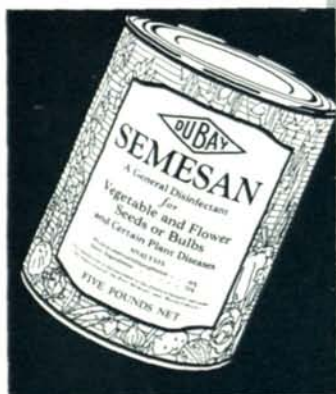


Once every week

to prevent midsummer turf injury by BROWN PATCH



SEMESAN

25 lbs. \$51.25
100 lbs. 200.00
300 lbs. 585.00



NU-GREEN

25 lbs. \$33.75
100 lbs. 130.00
300 lbs. 375.00



August's heat and humidity always increase the danger of brown patch damage. But in most cases, this damage can be entirely prevented by treating greens regularly *every week* with Du Bay Semesan or Nu-Green.

Semesan, recommended where soil is normally fertile, has a remarkable 10-year record for the prevention and control of brown patch. Nu-Green (the only brown patch disinfectant licensed under U. S. Patent No. 1,787,581) has been used successfully for 6 years. Because it also stimulates grass growth, it is advised where soil fertility is lower. Order from your seedsman or golf supply house.

SEMESAN

REG. U. S. PAT. OFF.



NU-GREEN

REG. U. S. PAT. OFF.



FREE: New pamphlet—"Brown Patch Diseases; Their Prevention and Control." Describes principal grass diseases; tells when they occur and how to prevent them with DuBay Fungicides. From your seedsman or supply house, or write Bayer-Semesan Co., Inc., Dept. 97-A, Du Pont Bldg., Wilmington, Del.

The NATIONAL GREENKEEPER

(Registered U. S. Patent Office)

Single Copies Twenty-Five Cents.
Yearly Subscription Three Dollars

ROBERT E. POWER,
President and Editor.
FRANK H. PELTON,
Secretary.
C. F. LOWE,
Treasurer.
M. J. FOX,
Assistant Secretary.

EDITORIAL COUNCIL
ALEX BINNIE Chairman
FRANK ERMER
M. E. FARNHAM
ALFRED E. LUNDSTROM
WALTER C. REED

Official Organ of the National Association of Greenkeepers of America

Published monthly at 405 Caxton Building, Cleveland, Ohio.

Contents copyright, 1932, by The National Greenkeeper, Inc., Publishers.

Entered as second-class matter, Aug. 25, 1928, at the post office, Cleveland, Ohio, under act of March 3, 1879

All Rights Reserved — None of the contents of this Magazine, either wholly or in part, may be reprinted without permission.

Contents

CANTERBURY AND THE WESTERN OPEN <i>By Spencer M. Duty</i>	5	GOLF TOURNAMENTS.....	21
FAIRWAY FERTILIZATION <i>By O. J. Noer</i>	11	MINNESOTA GOSSIP <i>By H. E. Stodola</i>	22
FERTILITY AND FERTILIZERS <i>By H. B. Siems</i>	15	GOLF NEWS.....	22
CANADIAN NEWS <i>By J. H. Eans</i>	20	FRED BURKHARDT SAYS.....	23
PACIFIC COAST GOSSIP <i>By Arthur Langton</i>	21	N.Y. GREENKEEPERS MEET AT TROY.....	23
		WHAT'S DOING IN GOLF.....	24
		MARKET PLACE AND BUYERS' GUIDE.....	25

Officers---National Ass'n of Greenkeepers of America

John Morley, President
Youngstown Country Club
2248 Selma Avenue
Youngstown, Ohio

Fred A. Burkhardt, Sec'y.-Treas.
Westwood Country Club
Box "A"—Rocky River Sta.
Cleveland, Ohio

John MacGregor, Vice-President
Chicago Golf Club
P. O. Box 717
Wheaton, Illinois

DIRECTORS

John Anderson, West Orange, N. J.
Carl Bretzlaff, Indianapolis, Indiana
Edward B. Dearie, Chicago, Ill.
M. E. Farnham, Philadelphia, Penna.
Leo J. Feser, Wayzata, Minn.

John Quail, Pittsburgh, Penna.
Wm. Sansom, Toronto, Ontario, Can.

TRUSTEES

Joseph Williamson, Chairman,
Columbus, Ohio, (1 year)
John Pressler, Pittsburgh, Penn., (2 years)
Grange Alves, Cleveland, Ohio, (3 years)

DISTRICT VICE PRESIDENTS

ELMER F. AFFELDT, Engineers' Country Club, Roslyn, Long Island, New York.
A. E. ARNOLD, Masonic Country Club, Grand Rapids, Michigan.
C. J. AUGUSTO, Del Monte Country Club, Del Monte, Calif.
G. W. BARNES, Banff Springs Golf Course, Banff, Alberta, Canada.
C. G. BARTON, Sylvania Golf Club, Toledo, Ohio.
ALEX BINNIE, Shoreacres Golf Club, Lake Bluff, Ill.
JAMES BOLTON, Berkshire Country Club, Reading, Pennsylvania.
MICHAEL BISSEL, Montclair Golf Club, Montclair, New Jersey.
ALEX BOYD, Rainier Country Club, Seattle, Washington.
A. L. BRANDON, Saint Charles Country Club, Saint Charles, Illinois.
PAUL BROCKHAUSEN, New Blue Mound Country Club, Wauwatosa, Wisconsin.
THOMAS BRYDON, Kahkwa Country Club, Erie, Pennsylvania.
J. O. CAMPBELL, Wethersfield Country Club, Hartford, Connecticut.
JAMES CONNAUGHTON, Monroe Golf Club, Pittsburgh, New York.
CARL DAVIS, Moonbrook Country Club, Jamestown, New York.
E. E. DAVIS, Meadville Country Club, Meadville, Pennsylvania.
M. L. DePARIEN, Gulf Stream Golf Club, Delray Beach, Florida.
THOS. E. DOUGHERTY, Springhaven Country Club, Chester, Pennsylvania.
GORDON W. EARL, Ogdensburg Country Club, Ogdensburg, New York.
CHARLES ERICKSON, Minikahda Club, Minneapolis, Minnesota.
FRANK W. ERMER, Ridgewood-Willick Golf Clubs, Cleveland, Ohio.
LEWIS M. EVANS, Tam O'Shanter Golf Club, Canton, Ohio.
O. E. EVANS, Country Club, Yorktown, Virginia.

R. E. FARMER, Brynwood Country Club, Milwaukee, Wisconsin.
D. ALLEN FRASER, Berkshire Hunt and Country Club, Lenox, Mass.
FORD GOODRICH, Flint Country Club, Flint, Michigan.
JACK GORMLEY, Van Schick Island Country Club, Cohoes, New York.
JOHN GRAY, Essex Golf and Country Club, Sandwich, Ontario, Canada.
J. E. HAMMER, JR., Memphis Country Club, Memphis, Tennessee.
HARRY HANSON, Maple Bluff Country Club, Madison, Wisconsin.
H. HAWKINS, Lakeview Golf Club, Port Credit, Ontario.
ROBERT HENDERSON, Country Club of Buffalo, Williamsville, N. Y.
G. HOLMQUIST, Fort Wayne Country Club, Fort Wayne, Indiana.
FRANK J. HOSNER, Glendale Golf and Country Club, Saginaw, Michigan.
ARTHUR J. JENSEN, Fargo Country Club, Fargo, N. D.
CHAS. S. KESSELRING, Moundsville Country Club, Moundsville, West Virginia.
FRED LARRENCE, Deal Golf Club, Oakhurst, New Jersey.
M. W. LAWRENCE, West End Country Club, New Orleans, Louisiana.
GEORGE LIVINGSTONE, Bell Meade Country Club, Nashville, Tennessee.
HUGH LUKE, Garden City Country Club, Garden City, New York.
SAMUEL LYLE, North Hills Country Club, Ferguson, Missouri.
JEROME MACDONALD, Palmetto Golf Club, Aiken, South Carolina.
TOM K. McCLENAHAN, Mayfair Golf and Country Club, Edmonton, Alberta, Canada.
JOE P. MAYO, Pebble Beach Country Club, Pebble Beach, California.
CHESTER MENDENHALL, Wichita Country Club, Wichita, Kansas.

T. H. RIGGS MILLER, Willow Brook Country Club, Staten Island, New York.
HUGH C. MOORE, St. Simon's Island Golf Club, St. Simon's Island, Ga.
JAMES MURDEN, Ridgewood Golf Club, Cincinnati, Ohio.
L. T. PARKER, Pasadena Golf Club, Pasadena, California.
WILLIAM E. PERKINS, Yale Athletic Ass'n., New Haven, Connecticut.
JOHN PIRIE, Whippoorwill Country Club, Chappaqua, N. Y.
CLARENCE PLOSS, Salem, Mass.
EDWIN O. PRATT, Mission Hills Country Club, Kansas City, Kansas.
ROBERT SCOTT, Baltimore Country Club, Baltimore, Maryland.
H. E. SHAVE, Oakland Hills Country Club, Birmingham, Michigan.
CLARENCE W. STROUSE, Highland Country Club, Grand Rapids, Mich.
DAVID TAIT, Northwood Country Club, Meridian, Mississippi.
RALPH THOMAS, Sandy Burr Country Club, Waltham, Massachusetts.
D. R. VALENTINE, Beaumont Country Club, Beaumont, Texas.
JOSEPH VALENTINE, Merion Cricket Club, Philadelphia, Pennsylvania.
TOM VARDON, Yacht Club, White Bear, Minnesota.
RICHARD WATSON, Chevy Chase Golf Club, Washington, D. C.
BONNIE WEAVER, Burlington Golf Club, Burlington, Iowa.
GEORGE WELLIN, Tumblebrook Country Club, New Britain, Conn.
JACK WELSH, Wakonda Country Club, Des Moines, Iowa.
SAM WHITING, Olympic Club, San Francisco, California.
WALTER WOODWARD, Senneville Country Club, Montreal, Quebec, Canada.
GROVER C. ZWEIFEL, Indian Hills Country Club, Catoosa, Oklahoma.



the Greens Committee Ponders

**BIG
ECONOMY
OFFER**

.. SUBJECT TO
CANCELLATION
WITHOUT
NOTICE

... "what to do" About FERTILIZER?

MILORGANITE answers with a dramatic Economy Offer that includes fertilizer at the amazingly low figure of \$5.00 to \$7.50 per acre. The Milorganite Plan **stops** Fairway "Depression"... **creates** New Leaders out of secondary courses... **builds** Membership... **permits** even the most distressed clubs to continue a sound improvement program this fall. The savings are tremendous if you act at once. Limited to ear load users only. And don't forget... "More Golf Clubs use Milorganite than any other fertilizer."

Our free booklet "Better Turf" tells why.

MILORGANITE PLAN . . . Ends Golf Course Dilemma
write for it . . . NOW



THE SEWERAGE COMMISSION, Milwaukee, Wisconsin (Dept. N)

Gentlemen—Please send full details of your Big Economy Offer. Also your free booklet, "Better Turf."

Name of Club _____

Address _____

By _____ Position _____

OUTSELLS ALL OTHER GOLF FERTILIZERS

AUGUST
1932
VOLUME VI
NUMBER VIII

The NATIONAL GREENKEEPER

Official Organ of The
National Association
of Greenkeepers of
America

Canterbury and the Western Open

By SPENCER M. DUTY

AT FIRST sight the course of the Canterbury Golf Club is somewhat deceptive and is apt to give the impression of being much easier than it really is. Sand traps are not the dominant feature of the landscape. The fairways are broad, the greens of ample size and generally with open, inviting entrances. Nor are the greens in the least bit tricky with the possible exception of No. 2.

However, low scoring does not prove to be quite as simple a matter as was first supposed, often leaving the player a bit bewildered as to the reasons, and with a firm conviction that another trial will bring home the bacon.

The real reasons are not hard to find. The course has not been based to any great extent on artificial hazards but rather on the natural character of the ground. Other than the tees and greens there is hardly a flat place on the course, and while not hilly, still the ground twists and rolls, at times abruptly and then fading out into a deceptive appearance of being level.

While the main part of the greens are as nearly level as well may be, still there is enough grade to provide surface drainage, and this slant is not always towards the middle of the fairway. Thus No. 4 hole bends to the left but the slant of the

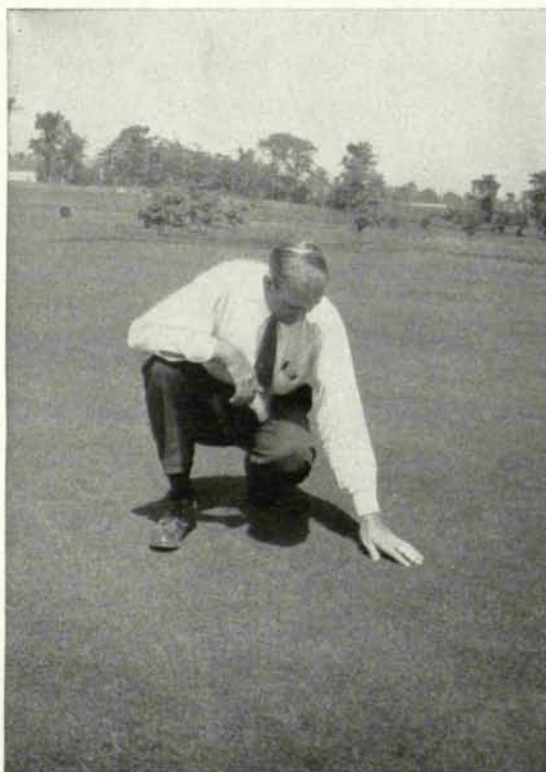
green is toward the right of the fairway. The short way to the hole may prove to be the harder way, especially if a strong breeze is blowing.

The fairways do not go directly over the hills but may follow along the side of a grade, giving, a stance where the ball is at a different level from the feet, and one foot is slightly higher than the other, often resulting in the ball flying to an unexpected place. No. 16 is a good example as the ground from tee to green slants in every possible direction.

The approaches to the greens maintain this character and if not carefully played may turn the ball to the side. All are watered so that a uniform growth of grass is maintained during the year.

Par for the course is 72, consisting of 4-3 par, 10-4 par, and 4-5 par holes. Of the 3 par holes, one is long, about 240 yards, and difficult, two of medium length, one of which is without a trap but with sufficient trouble in front and to the left, and one short, of 126 yards.

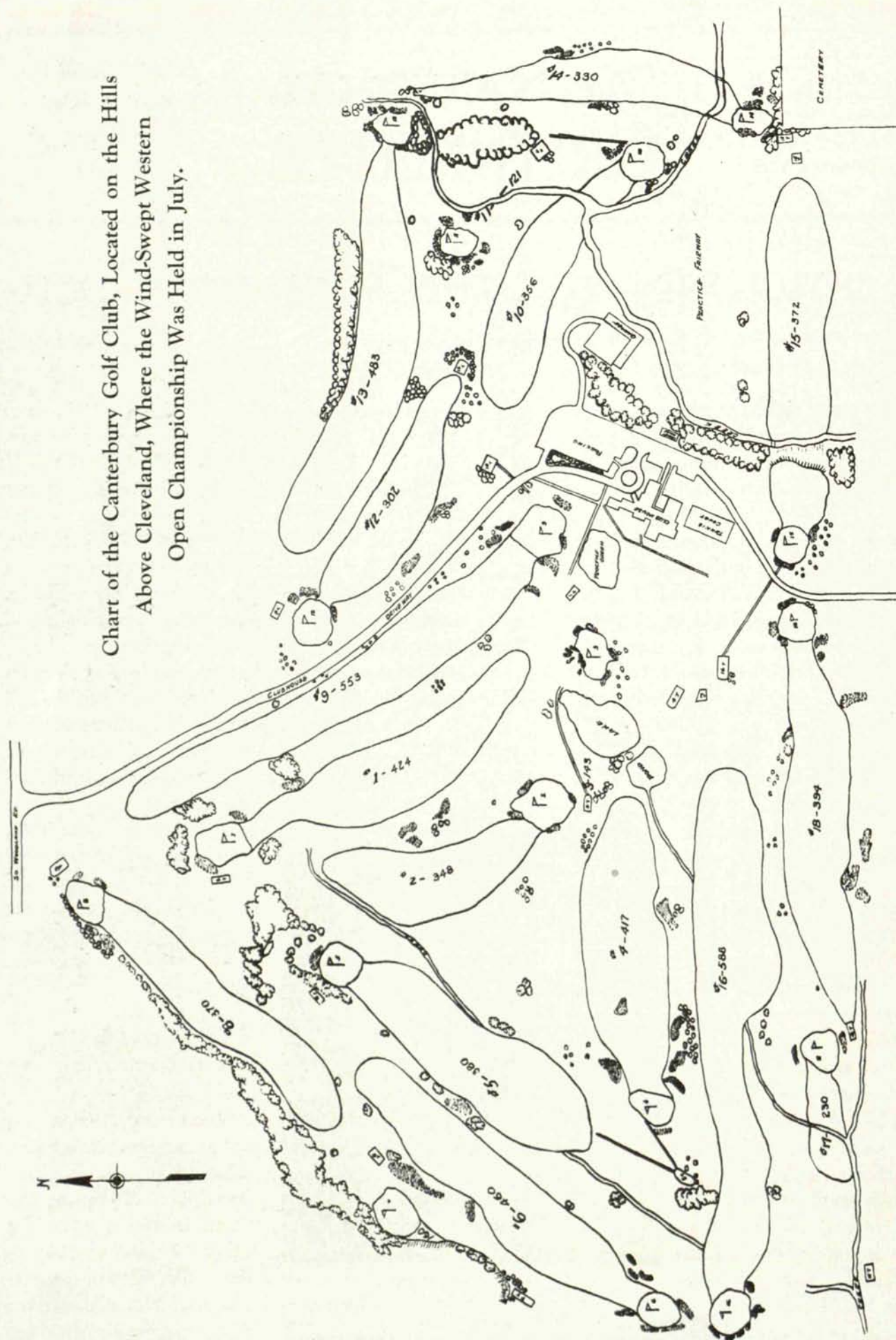
Of the par 5 holes, two are of sufficient length and difficulty to make it nearly impossible to reach the green in two shots. The other two are possible 2-shot holes for the expert. No. 6, which is slightly over 460 yards, lies along a ridge

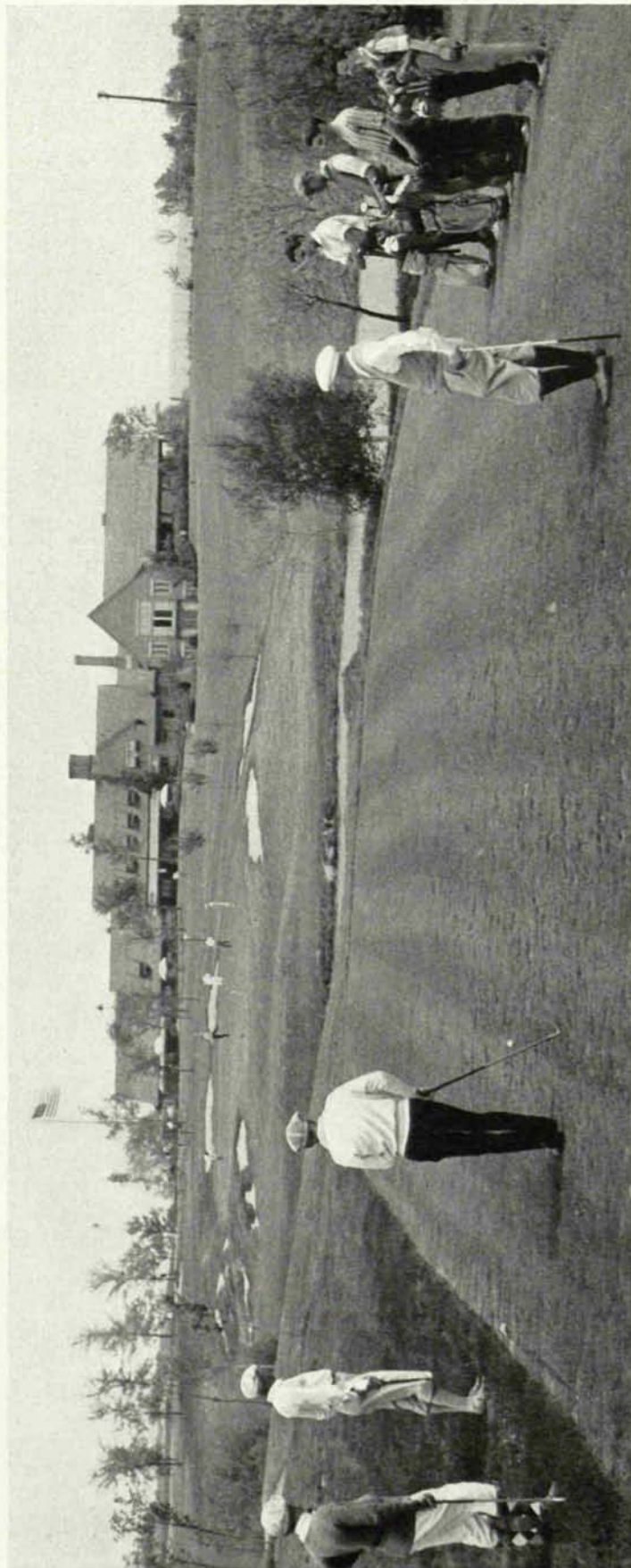
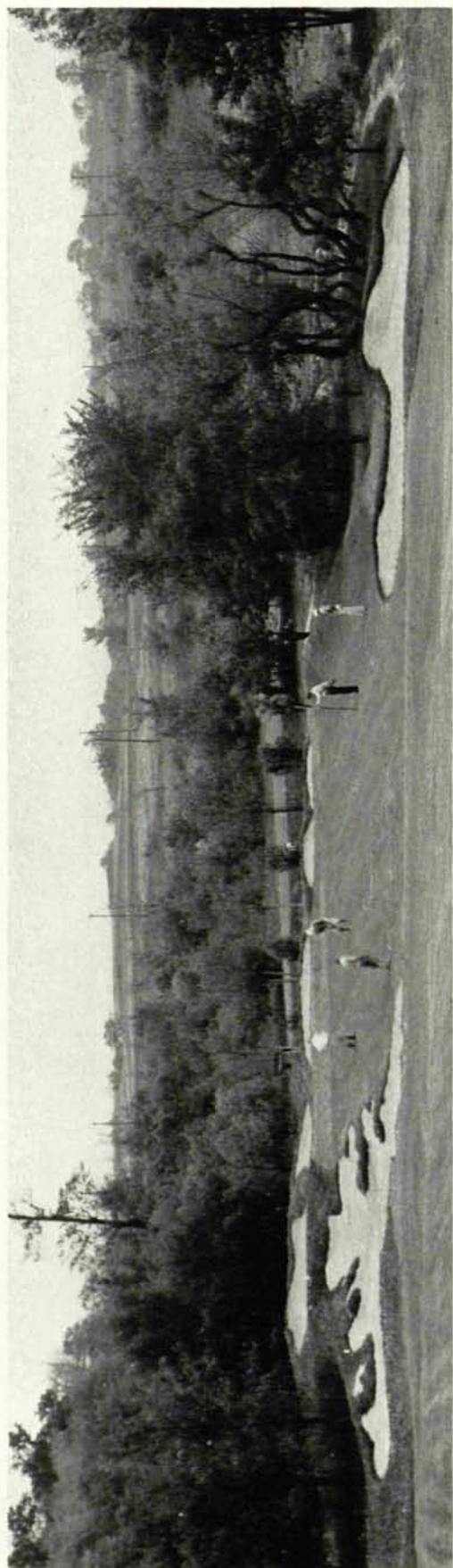


MALCOLM McLAREN

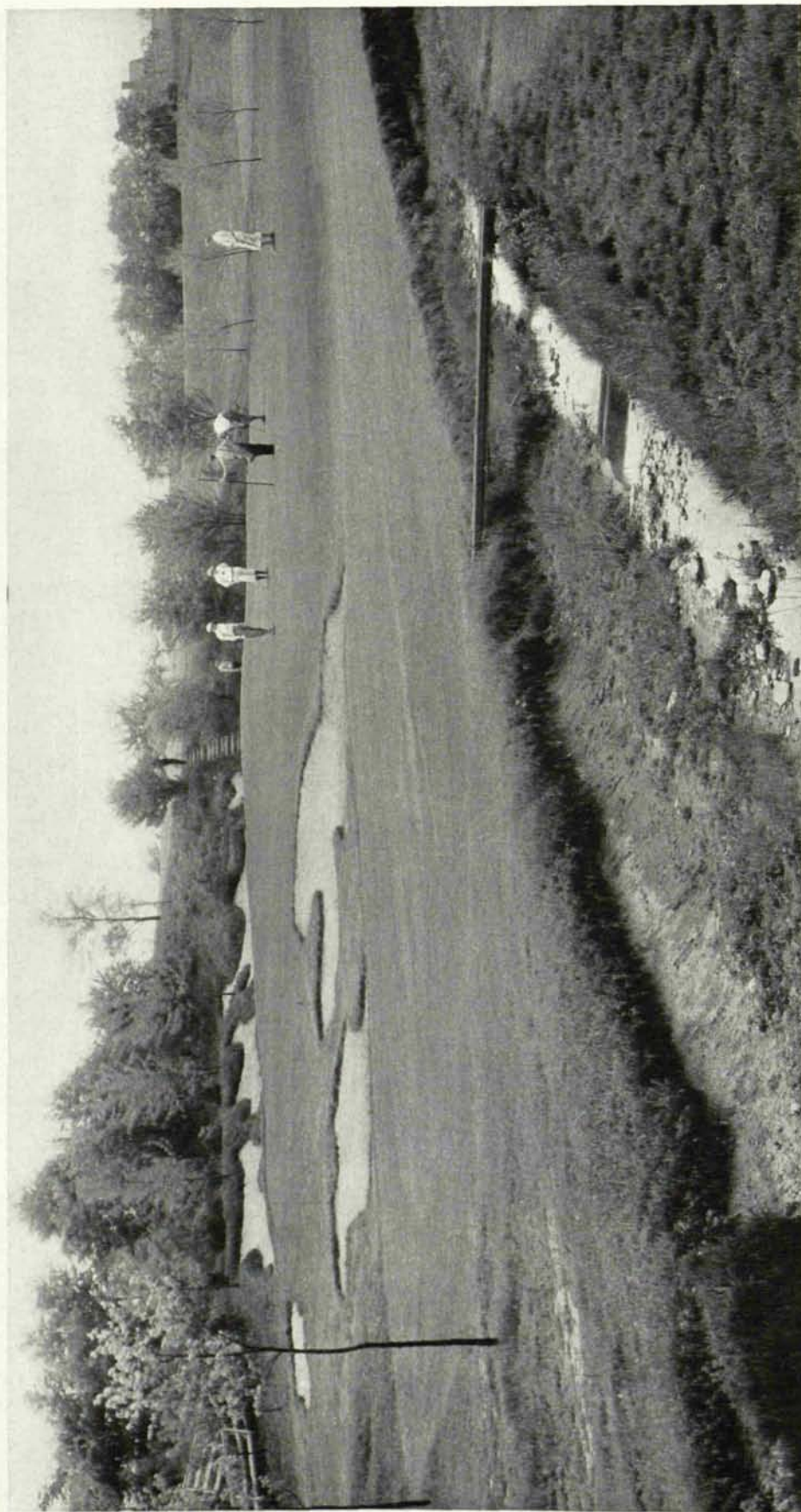
who assisted Jack Way in conditioning the Canterbury course for the Western Open Championship. He has the title of greenkeeper and is a worthy member of his profession.

Chart of the Canterbury Golf Club, Located on the Hills
Above Cleveland, Where the Wind-Swept Western
Open Championship Was Held in July.





TWO INTERESTING VIEWS OF THE CANTERBURY COURSE WHERE THE WESTERN OPEN
CHAMPIONSHIP WAS PLAYED IN JULY



NO. 14 GREEN AT CANTERBURY, A PAR 4 HOLE OF 330 YARDS

The green is tightly bunkered and is bordered by a creek, which makes the pitch shot especially difficult.

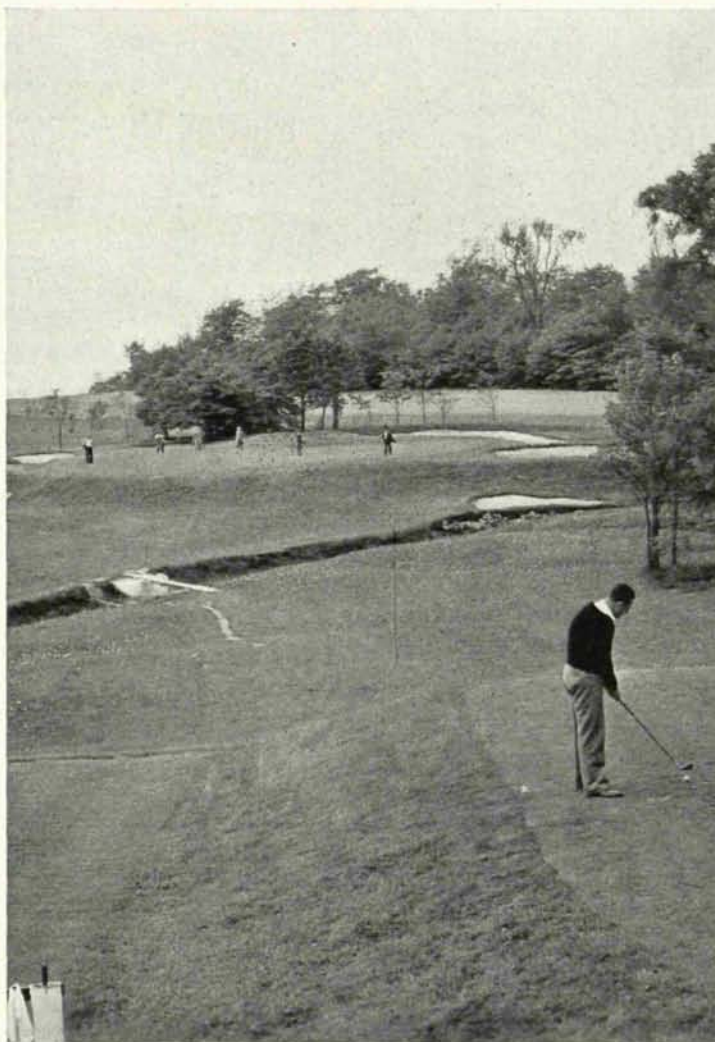
with the lower side on the left, while to the right of the green is out of bounds.

No. 13, when played at about 490 yards, goes over a grade which at the 230-yard point is considerably higher than the tee and green. The best drive will not be much beyond the crest, leaving a long, down-hill shot to a narrow entrance to the green. The right side of the green is wooded, the balance being surrounded by shallow traps, while beyond is a creek.

As a rule the tee shots can be hit hard provided the direction is right, but there are places

where judgment is to be preferred to strength such as No. 10 and 14 where an over-long ball will find trouble. Nor is a long shot justified as the approach is simple if the tee shot is properly placed.

No. 16 will call for a long ball when played from the rear tee at about 620 yards. Not only must the first two shots be long if the green is to be opened up but they must be well placed.



NO. 11, ONE OF CANTERBURY'S SHORT HOLES
This hole is 121 yards long and the view is taken from the tee.

Without doubt the stiffest consecutive holes are the last four, not only from the character of the ground but also because of their total distance. If the same rate was maintained throughout 18 holes the resulting length would be nearly 7400 yards.

Play during the tournament was from nearly the rear of the tees which gave a length of about 6600 yards. With a typical Canterbury breeze, this distance was ample for the most exacting golfers.

It is not generally realized that the Canterbury course is over 1100 feet

nearly 600 feet above Lake Erie, both the lake and the city being visible ten miles to the west. To the south, the hills on the far side of Cuyahoga Valley, fifteen miles away, loom up. As a result, if there is a breeze anywhere in the vicinity Canterbury gets a strong wind.

We are indebted to Mr. W. J. Daily, chairman Press and Publicity committee, for the illustrations used in this article.



CANTERBURY OFFICIALS WHO MADE THE WESTERN OPEN CHAMPIONSHIP A SUCCESS
On the left is Russell S. Begg, Green committee chairman; in the center is E. B. Roberts, president; and on the right is H. B. Burrows, vice-president.



The 9th green at Fresh Meadow Country Club, Flushing, L. I., where the U. S. G. A. Open Golf Championship was held this year. Grass Seed for this course supplied by Stumpp & Walter Co.

The Greenkeeper Knows!

Every Greenkeeper knows the importance of the maintenance of turf in a fine healthy condition and that the Fall of the year is the best time to sow grass seed, especially in connection with new work.

While budgets have been cut and economy practiced in every department, here is one place where false economy should be avoided, especially as the cost for grass seed is so comparatively small. To neglect this necessary work will mean a far greater expenditure in the future. It is real economy to do it now. Wherever there is a weak spot sow Grass Seed of Known Quality to thicken up the turf and crowd out the weeds.

For Your Fall Seeding, Sow

Grass Seed

of Known Quality

TESTED for PURITY and GERMINATION

South German Bent Colonial Bent Fancy Red Top
Chewing's N. Z. Fescue Kentucky Blue Rough Stalked Meadow
Special Bent Formulas for Putting Greens and Fairways

TWO OUTSTANDING BENTS

Triple A Bent—A stoloniferous type of *Agrostis capillaris* which produces turf of the deep apple-green color and fine silk-like texture of Velvet Bent. The seed has been processed so thoroughly for the removal of weeds that it consists of over 99% pure seed.

Seaside Bent (Coco's Co. Strain)—A true strain of *Agrostis palustris* (formerly known as *Agrostis maritima*) which has produced some of the finest greens in America. Quick to grow and strongly creeping, it yields a closely matted bluish green turf of very uniform texture, similar in appearance to a fine vegetative turf.

Prices on above, or any other turf producing grasses, on request.

Remember—All our seeds are of the highest quality, obtained direct from the most reliable sources of supply and are botanically true to name. All seeds are new and are cleaned and re-cleaned until they are brought up to the highest possible state of purity and germination, special care being given to the elimination of weed seeds.

Without obligation we shall be pleased to send a representative who, from long experience, is qualified to advise regarding grasses and furnish such other information as is necessary for the best results

Stumpp & Walter Co.

Specialists in Golf Grass Seeds, Fertilizers and Equipment

132-138 Church St. (at Warren St.) New York

Survey of 200 golf clubs proves
Barbak costs less per season

200 golf clubs using Brown Patch
Fungicides found that:

One application of	Lasts	Average
Inorganic Mercury	2—14 days	6 days
Quickly-soluble Organic Mercury	2—13 days	6 days
Slowly-soluble Organic Mercury*	2—27 days	10 days

*Barbak

It's not the cost of each application, but the cost of a season's protection that determines the ex-

penditure of fighting Brown Patch. Brown Patch may strike today or two weeks from today. No fungicide can absolutely prevent attacks but a good fungicide lessens the severity of violent attacks and wards off light attacks. The fungicide you use must be constantly on guard to protect your greens.

That means that the fungicide with the longest-lasting effectiveness is cheapest in the long run. Barbak, the slowly soluble fungicide, according to this survey, fills this bill. On the average, Barbak protects your greens just about twice as long as other fungicides—saves labor as well as materials.

Not only that . . . Barbak is odorless, easy to apply, doesn't cake in the can. It won't burn your turf, whether watered in or applied with your top soil dressing.

Write us for the name of your nearest Barbak distributor, and check these advantages for yourself.



AMERICAN CYANAMID & CHEMICAL CORP.
535 FIFTH AVENUE
NEW YORK CITY

211 Barbak XX
TWO ELEVEN DOUBLE XX

USE WHERE THE SOIL
FERTILITY IS LOW

USE WITH A BALANCED
FERTILIZER PROGRAM

TURF DISINFECTANT