

The TORO Zenith Disker

FOR cultivating putting greens without marring their beauty . . . to open the soil for light, air, water and top dressing and to prevent excessive souring . . . use the Toro Zenith Disker several times during the season. It cuts the running stooling grasses and weeds without injuring the turf.

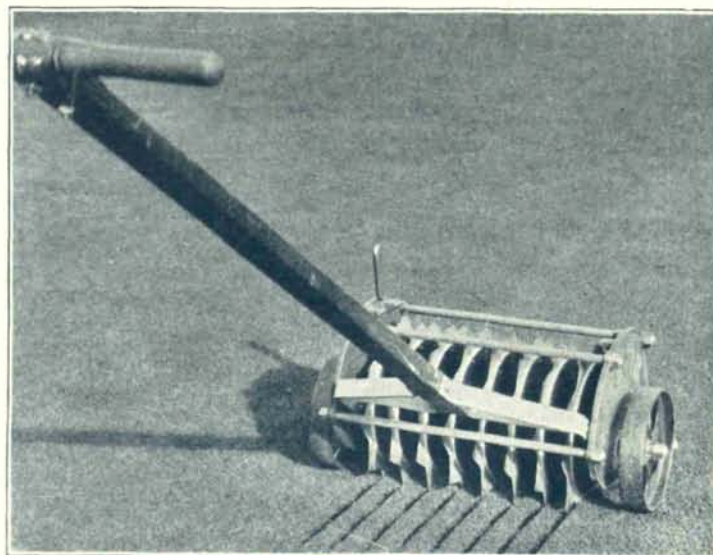
*Write for complete catalog
of Toro Equipment*

Toro Manufacturing Co.

3042-3160 Snelling Avenue
Minneapolis, Minn.

Service Stations at:

Newton, Mass.	Cleveland, Ohio	Dallas, Texas
New York, N. Y.	Detroit, Mich.	Los Angeles, Calif.
Yonkers, N. Y.	Indianapolis, Ind.	Winnipeg, Man.
Syracuse, N. Y.	San Francisco, Calif.	Toronto, Ont., Can.
Troy, N. Y.	Chicago, Ill.	Calgary, Alta., Can.
Jacksonville, Fla.	Des Moines, Iowa	Buenos Aires, S. A.
Philadelphia, Pa.	Kansas City, Mo.	Hamburg, Germany



Grass Seed
Fertilizers
Seeders
Toro Equipment
Grounds' Equipment
Rollers
Discers

*Our Repair Dept. is the Most Modern
and Best Equipped in the Chicago Area*

J. Oliver Johnson, Inc.

World's Largest Golf Course Equipment House

Morgan-Huron-Superior Sts.

CHICAGO, ILL.

© Reg. J O J Inc. 1928

JUST OUT **The Lawn**

BY LAWRENCE S. DICKINSON

Ass't. Professor of Horticulture
Massachusetts Agricultural College

Defines and describes the Culture of Turf in Park,
Golfing and Home areas.

CONTENTS

The General View	Controlling Pests
Molding the Lawn	General Maintenance
Preparation of the Seed Bed	Lawn Mowers
Seed Selection and Planting	Park Turf
Important Turf Plants	Cemetery Turf
Planting a lawn with Stolons	Useful Tables
Fertilizing	

Illustrated

128 pages---Price \$1.25 postpaid
to any address

The National Greenkeeper

405 Caxton Bldg.

Cleveland, Ohio

The NATIONAL GREENKEEPER

(Registered U. S. Patent Office)

Official Organ of the National Association of Greenkeepers of America

Published monthly at 405 Caxton Building, Cleveland, Ohio.

Contents copyright, 1930, by The National Greenkeeper, Inc., Publishers.

Robert E. Power, President and Editor; Frank H. Pelton, Sec'y.; C. F. Lowe, Treas.; M. J. Fox, Asst.-Sec'y.

Entered as second-class matter, Aug. 25, 1928, at the post office, Cleveland, Ohio, under act of March 3, 1879

All Rights Reserved—None of the contents of this Magazine, either wholly or in part, may be reprinted without permission

Contents

DIAGRAM OF SPACE 5th Annual Greenkeepers' Golf Show	4	AFFELDT BUILDING MINIATURE COURSES	22
COLUMBUS SHOW — A SELL OUT	5	CANADIAN GOSSIP By J. H. Evans	23
MERION AND ITS HISTORY	6	MID-WEST GREENKEEPERS' PAGE By A. L. Brandon	25
COMMON SENSE GREENKEEPING By Capt. C. Clarke	14	PACIFIC COAST GOSSIP By Arthur Langton	26
HOW WE NURSED OUR GOLF COURSES THROUGH THE PAST SUMMER'S DROUGHT	16-17	NEW ENGLAND NOTES By Llewellyn L. Derby	27
JOHN QUAILL SAYS	21	ERMER ELECTED PRESIDENT	25
AN EDITORIAL By Robert E. Power, Editor	21	MARKET PLACE AND BUYERS' GUIDE	29

Officers---National Ass'n of Greenkeepers of America

John Morley, President
Youngstown Country Club
2248 Selma Avenue
Youngstown, Ohio

John Quail, Secretary
Highland Country Club
426 Highland Avenue
West View, Pittsburgh, Penn.

Fred A. Burkhardt, Treasurer
Westwood Country Club
Cleveland, Ohio

John MacGregor, First Vice Pres.
Chicago Golf Club
Box 717, Wheaton, Illinois

Lewis M. Evans, Second Vice Pres.
827 Hazel Avenue
Ardley, Penn.

Wm. J. Sansom, Third Vice Pres.
Toronto Golf Club
Long Branch, Ontario, Can.

George Davies, Fourth Vice Pres.
Big Springs Golf Club
Louisville, Kentucky

Robert J. Hayes, Fifth Vice Pres.
Pelham Country Club
Pelham Manor, New York

DISTRICT VICE PRESIDENTS

ELMER F. AFFELDT, 35-12 Brewster Ave., Flushing, L. I., New York.
JOHN ANDERSON, Crestmont Country Club, W. Orange, N. J.
WALTER G. ANDERSON, Sunnehanna Country Club, Johnstown, Penn.
A. E. ARNOLD, Masonic Country Club, Grand Rapids, Mich.
C. J. AUGUSTO, Del Monte Country Club, Del Monte, Calif.
G. W. BARNES, Banff Springs Golf Course, Banff, Alberta, Canada.
C. G. BARTON, Sylvania Golf Club, Toledo, Ohio.
C. BASHAM, River Crest Country Club, Fort Worth, Texas.
ALEX. BINNIE, Shoreacres Golf Club, Lake Bluff, Ill.
JAMES BOLTON, Berkshire Country Club, Reading, Penn.
W. A. BOSTIC, Biltmore Forest Country Club, Biltmore, N. C.
CARL A. BRETZLAFF, Meridian Hills Country Club, Indianapolis, Ind.
PAUL BROCKHAUSEN, New Blue Mound Country Club, Wauwatosa, Wisconsin.
FRED A. BURKHARDT, Westwood Country Club, Cleveland, Ohio
JOHN CAIRD, Manito Golf Club, Spokane, Wash.
J. O. CAMPBELL, Wethersfield Country Club, Hartford, Conn.
JAMES CONNAUGHTON, Monroe Golf Club, Pittsford, New York.
DENNIS CROWLEY, Wollaston Golf Club, Boston, Mass.
CARL DAVIS, Moonbrook Country Club, Jamestown, New York

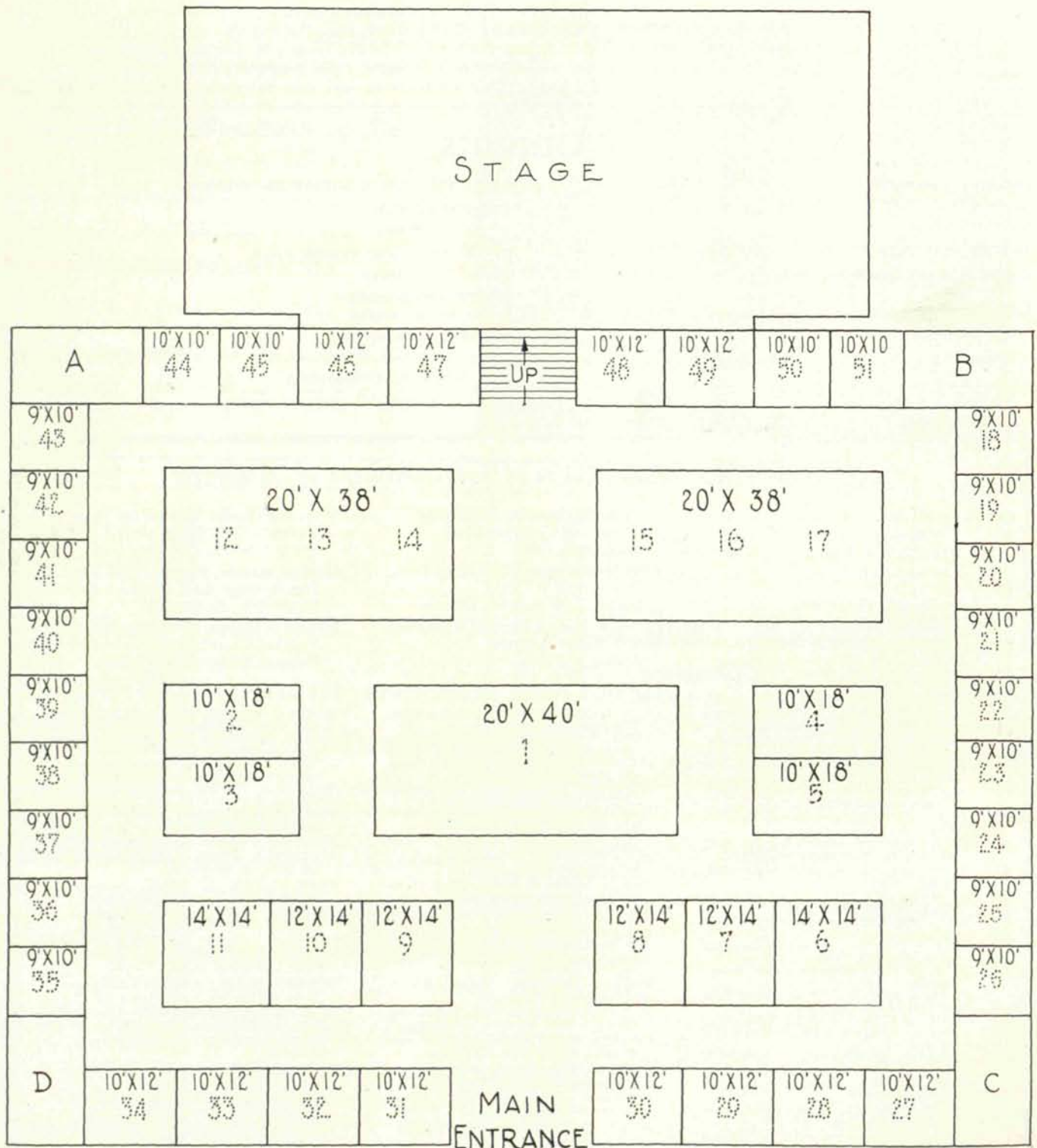
E. E. DAVIS, Meadville Country Club, Meadville, Penn.
THOS. E. DOUGHERTY, Springhaven Country Club, Chester, Penn.
GORDON W. EARL, Ogdensburg Country Club, Ogdensburg, N. Y.
CHARLES ERICKSON, Minekahda Club, Minneapolis, Minn.
D. ALLEN FRASER, Berkshire Hunt and Country Club, Lenox, Mass.
FORD GOODRICH, Flint Country Club, Flint, Michigan.
JOHN GRAY, Essex Golf and Country Club, Sandwich, Ontario.
HARRY HANSON, Maple Bluff Country Club, Madison, Wisconsin.
H. HAWKINS, Lakeview Golf Club, Port Credit, Ontario.
ROBERT HENDERSON, Country Club of Buffalo, Williamsville, N. Y.
ARTHUR J. JENSEN, Fargo Country Club, Fargo, N. D.
OSCAR JOHNSON, Happy Hollow Club, Omaha, Nebraska.
M. W. LAWRENCE, West End Country Club, New Orleans, Louisiana.
GEORGE LIVINGSTON, Belle Meade Country Club, Nashville, Tenn.
HUGH LUKE, Garden City Country Club, Garden City, N. Y.
WILLIAM MAYNE, Jasper Park Lodge, Alberta, Canada.
JOE P. MAYO, Pebble Beach Country Club, Pebble Beach, Calif.
CHESTER MENDENHALL, Sim Park Golf Club, Wichita, Kansas.
T. H. RIGGS MILLER, Richmond Country Club, Staten Island, New York.

HUGH C. MOORE, St. Simon's Island Golf Club, St. Simon's Island, Ga.
JAMES MUIRDEN, Ridgewood Golf Club, Cincinnati, Ohio.
JOSEPH O'GRADY, New Bedford Country Club, New Bedford, Mass.
WILHELM PETER, Lynnhaven Golf Course, Kansas City, Mo.
JOHN PIRIE, Country Club of Fairfield, Fairfield, Conn.
CLARENCE PLOSS, Salem, Mass.
WALTER C. REED, Westwood Country Club, St. Louis, Mo.
CAPT. DAVID L. REES, Progress Country Club, Purchase, New York.
CHARLES A. ROBINSON, Brookside Country Club, Lake Tarleton, Pike, N. H.
GEORGE SARGENT, Scioto Country Club, Columbus, Ohio.
ROBERT SCOTT, Baltimore Country Club, Baltimore, Maryland.
H. E. SHAVE, Oakland Hills Country Club, Birmingham, Michigan.
FRED J. TIENKEN, Colorado Springs, Colorado.
D. R. VALENTINE, Beaumont Country Club, Beaumont, Texas.
JOSEPH VALENTINE, Merion Cricket Club, Philadelphia, Penn.
GEORGE WELLIN, Tumblebrook Country Club, New Britain, Conn.
JACK WELSH, Wakonda Country Club, Des Moines, Iowa.
WALTER WOODWARD, Senneville Country Club, Montreal, Quebec, Canada.

DIAGRAM OF SPACE

Fifth Annual National Greenkeepers' Golf Show

For list of Exhibitors who have reserved space to date, see page 30



Columbus Auditorium, Columbus, Ohio

November
1930
Volume IV
Number XI

The NATIONAL GREENKEEPER

The Leading Journal of the World on Turf Culture and Golf Course Maintenance

Official Organ of The
National Association
of Greenkeepers of
America

Columbus Show—A Sell Out

IT LOOKS now as though the 5th Annual Greenkeepers' Show at Columbus the first week in February would be a sell out. Already more than three-quarters of the space available has been reserved.

Under the extremely able management of Fred A. Burkhardt, chairman of the Show Committee and his assistants the Greenkeepers' Show has grown every year.

It has proved to be the most important point of personal contact during the year between the men who earn their livelihood growing turf and the manufacturers who supply the equipment and materials necessary to turf culture.

Not only greenkeepers and Green committee chairmen in charge of golf courses but superintendents of grounds of parks, cemeteries, airports and schools and colleges attend the annual Greenkeepers' Golf Show and Convention. It is fast becoming an institution of learning because of the educational features which are incorporated in the four days allotted. While this time may seem short every subject of turf culture is covered and not a minute's time is wasted.

Men from every State in the Union and every Province in Canada come to the Greenkeepers' Convention. They meet and talk with men who have had years of practical experience growing fine turf. They see the latest in machinery and equipment. They learn about fertilizers, about seeds, about humus, about fungicides and insecticides. They get first-hand knowledge of all the things that

mean saving hundreds and thousands of dollars for their employers.

It is universally admitted now that the National Association of Greenkeepers of America through its educational work has done more for the golf clubs of America than any other agency. This statement is unquestioned—the increasing interest and attendance at the Annual Golf Show and Convention proves it. Such help as the National Greenkeeper has contributed in bringing about this happy condition for all interested in more efficient and economical golf course maintenance has been freely and cheerfully given. On all sides it has been a labor of love—an ideal to make John Morley's dream come true.

Executive Committee Meets In New York

The annual fall meetings of the Executive Committee of the National Association of Greenkeepers of America will be held at the Roosevelt Hotel, New York City, November 17, 18 and 19.

An interesting program has been arranged by the New York greenkeepers, which includes visits to Oak Ridge, Century, Round Hill, Pomonok, Crescent A. C., and several courses in New Jersey.

On Monday evening the Westchester Greenkeepers' Association will tender the directors a dinner at Lawrence Inn, Mamaroneck, N. Y. The directors who are expected to attend are: Colonel John Morley, President; John Quail, Secretary; Fred A. Burkhardt, Treasurer; John MacGregor, First V. P.; Lewis M. Evans, Second V. P.; Wm. J. Sansom, Third V. P.; George Davies, Fourth V. P.; Robert J. Hayes, Fifth V. P.

Merion And Its History

This famous club, organized in 1866, started with fifteen men and annual dues of two dollars

TO TELL the history of Merion in tennis, golf, cricket and other sports would take up more room than is available. In the earlier days, many cricket matches with foreign teams were played as Lord Hawkes' team, Prince Ranjitsinshi's team, Cambridge University eleven, Australian eleven, and the Marlybone Cricket Club.

The Merion Cricket Club was started with fifteen members, and Archibald R. Montgomery was its first president. The annual dues were two dollars per annum, and the luxuries afforded the members consisted of the privilege of playing cricket in an open field at Wynnewood on the land of a member's father, of finding shelter in any old countryside school house, and the use of the school pump to provide bathing facilities. These grounds were occupied from 1886 to 1893.

While the club was organized in 1866 the present golf course was not built until 1900. To golfers it is hardly necessary to mention the many golf matches of note that have been played on the Merion courses. Amateur and professional, state, city and national events have been held there. In national events, Merion's first experience was with the Woman's National Tournament in 1909 which was played over the original course north of the Pennsylvania Railroad.

In 1916 the National Amateur Tournament of the United States Golf Association was played upon the new courses, the qualifying round being played on both the East and West courses. This was won by "Chick" Evans.

In 1924, Merion's celebrated East course was again selected as the site for the 28th National Amateur Golf Championship. It resulted in the victory of "Bobby" Jones over George von Elm, on the twenty-eighth hole.

In 1926, at the request of many of the leading women golfers of the United States, Merion's East course was selected by the United States Golf Association for the Women's National Tournament of that year, which was won by Mrs. Helen B. Stetson, of Philadelphia.

Merion's East course was again selected this year as the place for holding the present 34th National Amateur Championship of the United States Golf Association.

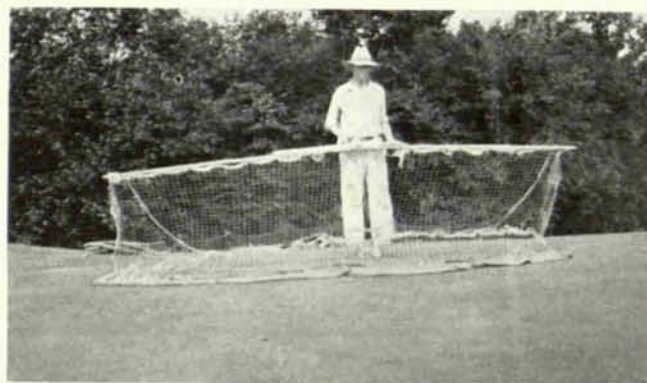
Perhaps it would be interesting to know how the quality and condition of these courses have been established and maintained; and it is only fair to say that it is due largely to the fact that in the twenty years since the development of the East course at Merion only four chairmen of the Green Committee have had charge of the work. These are: Winthrop Sargent, Hugh I. Wilson, John R. Maxwell, and Arnold Gerstell, the present chairman. Con-

tinuity of purpose, knowledge of development, and skilled attention have marked the work of these men.

It is said of Joe Valentine, veteran greenkeeper in charge of Merion's golf courses, that there may be other greenkeepers in the United States just as good, but there are certainly none any better. He is a keen student of turf culture and has shown a versatility in handling critical situations which stamp him as a past master in golf course maintenance. Always he has Merion in the pink of condition, and when disease strikes his turf he quickly finds an efficient means of checking it. In every way Joe Valentine is a credit to the profession he represents.



JOE VALENTINE
*Veteran greenkeeper of the
Merion Cricket Club*

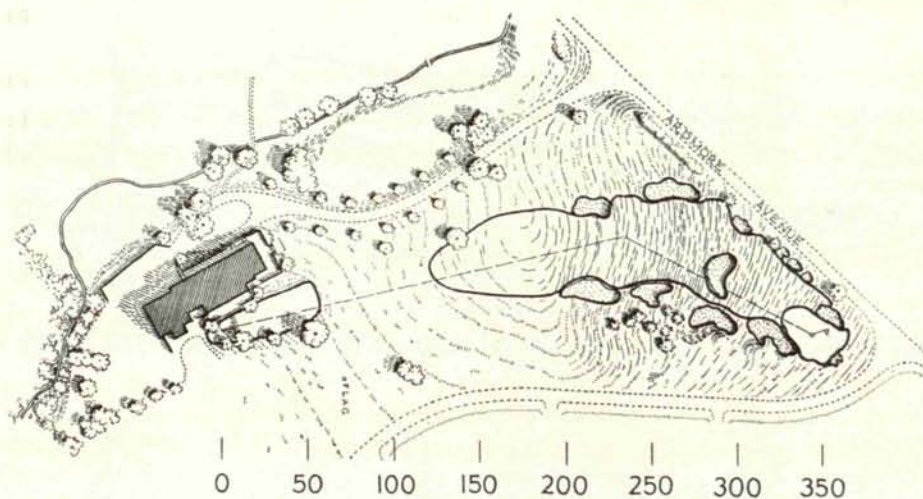


NET WITH SACKS FOR DRAGGING GREENS

This is used by Robert Foulis, pro-greenkeeper, Bellerive C. C., Normandy, Mo., who says it is more practical than poling.

MERION CRICKET CLUB, PHILADELPHIA

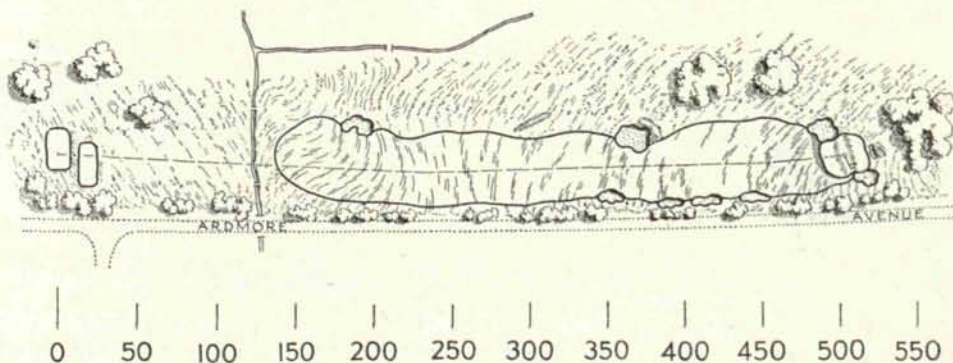
HOLE 1. 360 Yards—Par 4. Drive and Pitch



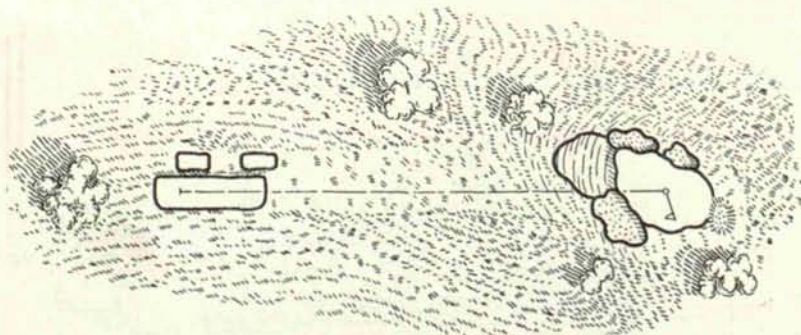
A 360-YARD dog-leg, bearing to the right, requiring a well-placed first shot. Two traps, stepped one above the other, lie in wait for a hooked drive. Two others, to the right, penalize a slice. A small trap near the cedar tree at the back end of the Fairway marks the line of the drive. The second shot demands particular accuracy, with a carrying bunker to catch a topped shot and with traps to left and right of level Green. Pocket of sand in a mound at the back of the Green punishes an over-played approach. Looks difficult, but two good shots in succession will turn the trick.

HOLE 2. 523 Yards—Par 5. A Three-Shotter

STRAIGHTAWAY, 523 yards Drive over a brook, one hundred fifty yards from the Tee, with a trap to the left and an exacting boundary to the right all the way. Up grade from the brook to the Green, requiring a stout second shot for short hitters, with a chance for the longer ones to pick off a bird if they have courage to go for it. Traps to the left and right to penalize a muffed second shot. Third a comfortable run-up or pitch to the triple-plateau Green. Traps to the left and to the far right side of the Green. A hole that allows no nonsense.



HOLE 3. 195 Yards—Par 3. Iron or Spoon

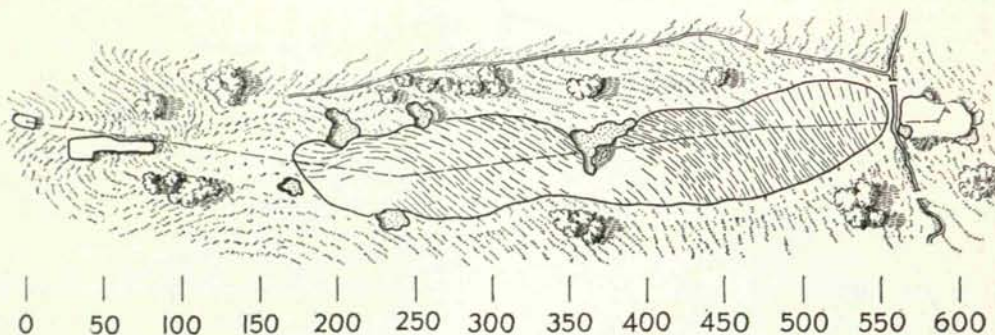


TEE shot requires full carry to plateau Green, somewhat higher than the Tee. Steep, rough slope running up to the Green, which has slightly converging slopes and is flanked by a deep, high-banked trap on the near right and two smaller ones on the left far side.

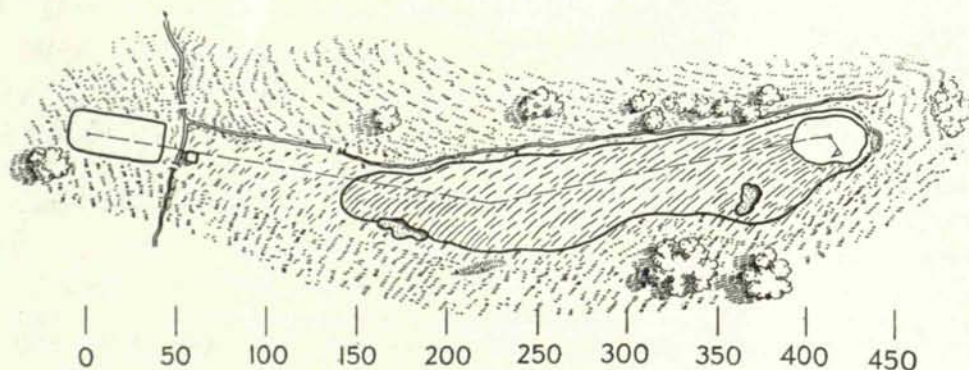
MERION CRICKET CLUB, PHILADELPHIA

HOLE 4. 595 Yards—Par 5. A Long Three-Shotter

Straightaway, 595 yards. Traps to the left to catch a hooked drive, and another to the right to punish the opposite fault. Plenty of distance for a smacking second, with a broad carrying bunker to catch a topped second shot. Third a pitch, if the first two have had length. Fairway slopes down to flat Green, with a brook in front, mounds to the left and right, and traps at the rear. The Tee and second shots generally tell the story.



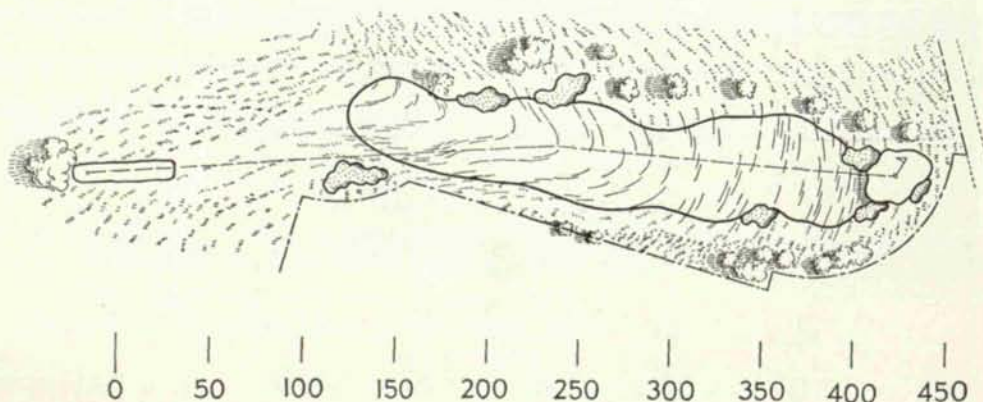
HOLE 5. 435 Yards—Par 4.—Drive and Iron or Spoon



Fairway bears somewhat to the left, with a brook on that side from Tee to Green. Trap to the right to punish a sliced drive, another farther along to catch a timid second shot, with an ample, somewhat sloping Green. Altogether, a hole that does not appear particularly challenging, but which produces fewer pars than any other except the eighteenth.

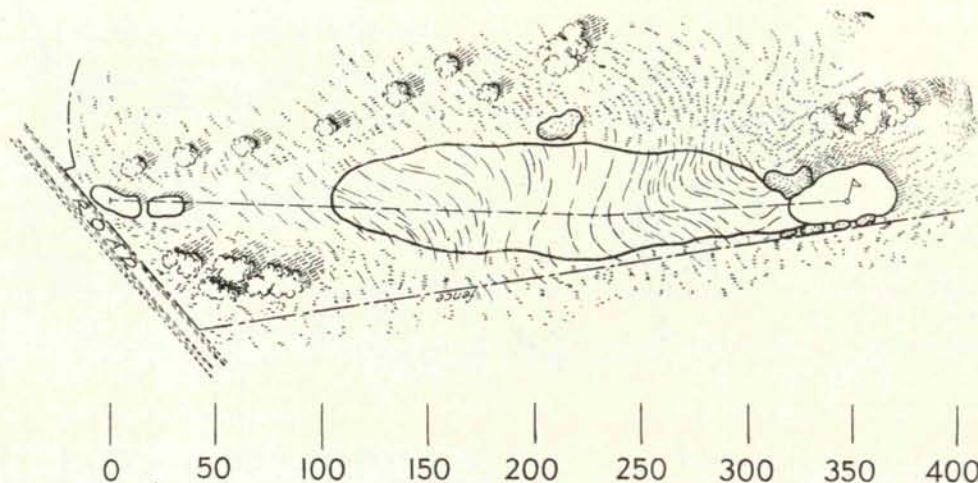
HOLE 6. 442 Yards—Par 4. Drive and Iron or Spoon

Straightaway, over trap and jutting garden to the right, with second shot to a somewhat raised level Green guarded by traps at left, right and rear. Here the drive does it, if the succeeding shot is firm, and both are true.



MERION CRICKET CLUB, PHILADELPHIA

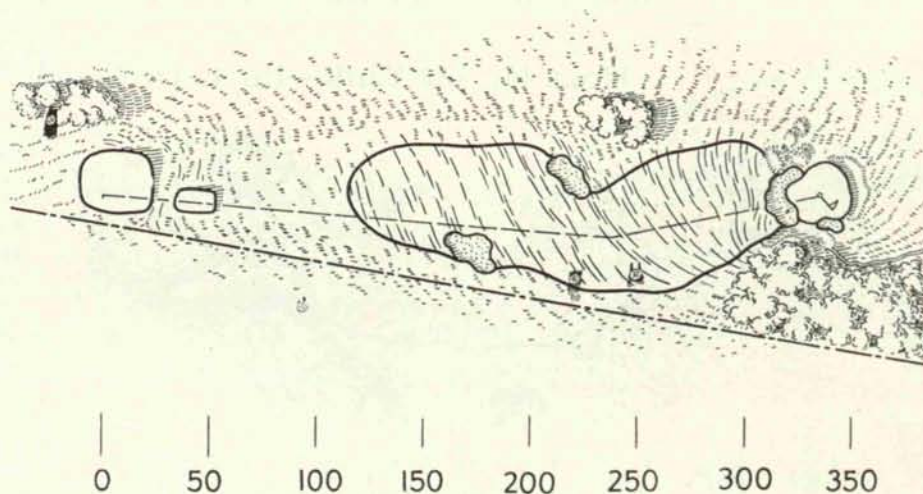
HOLE 7. 355 Yards—Par 4. Drive and Run-up



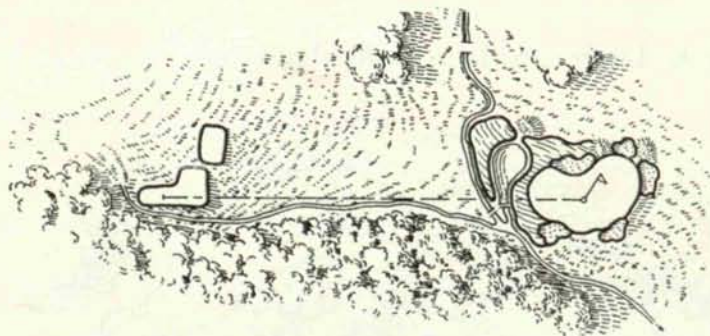
STRAIGHTAWAY, with a boundary edging closer to the Green as the latter is approached. A well-placed drive, particularly if long, opens up the hole. Otherwise it calls for an accurately pitched second, which must avoid a deep trap to the left of the somewhat sloping Green, with four shallow pits at the right. A hole that is tough but smart, troublesome but fair.

HOLE 8. 350 Yards—Par 4. Drive and Pitch

STRAIGHTAWAY, with a boundary to the right, and traps to the left and right of Fairway for the drive to clear. Further on, a mound to the left of the somewhat sloping Green, grassy depressions to the right and rear, and in front a yawning expanse of sand across the entire entrance. Once the drive has come off satisfactorily, only a tight pitch will bring results.



HOLE 9. 170 Yards—Par 3. Iron or Mashie Iron

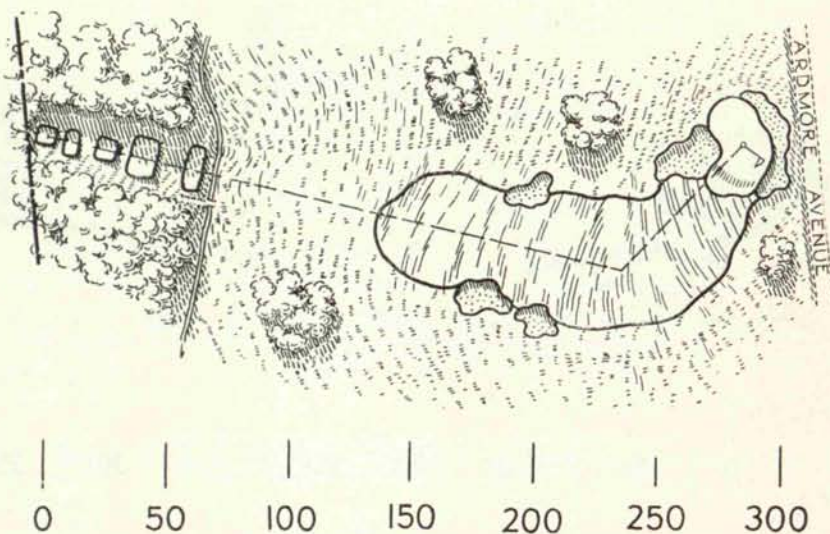


FULL carry over a pond which fronts an ample comparatively level Green, with brook and sand to the right, and traps separated by grassy mounds to the left and rear. Green bends around from right to left, and particular accuracy is required if the shot is to be close when the pin is placed in the far left portion of the Green.

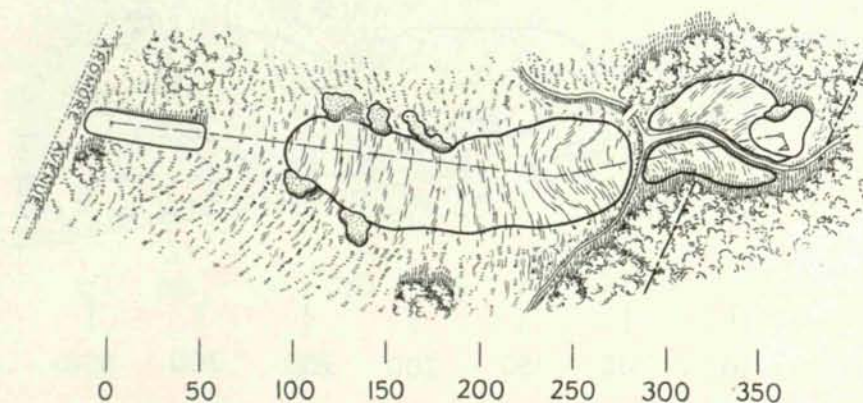
MERION CRICKET CLUB, PHILADELPHIA

HOLE 10. 335 Yards—Par 4. Drive and Run-up

A DOG-LEG to the left, with an invitation to cut loose from a Tee high up in the woods, across low ground to the raised Fairway at about the level of the Tee. Trap to the left and two to the right to punish infirm Tee shots, with ample reward to the long hitter who gets his drive out opposite the entrance to the comparatively narrow level Green, flanked by a broad and deep trap to the left and three shallow pits to the right. Because of its exceptionally fine texture, this Green looks faster than the others, but it does not play faster. Here, again, the drive does it.



HOLE 11. 378 Yards—Par 4. Drive and Mashie



A FAIRWAY that bears somewhat to the left and falls away to a lower level, which helps the Tee shot if traps to the left and right have been cleared. A particularly severe second shot to a conservative level Green set in the elbow of a winding brook to the right and rear, with a pit cutting in on the left side of the Green. There is practically no Fairway between the drive area and the Green itself, and a high pitch with plenty of bite is necessary to hold the Green. Altogether, rather more than one hole's share of possible grief.

HOLE 12. 415 Yards—Par 4. Drive and Iron or Mashie Iron

A DOG-LEG, to the right. Drive from a Tee back in the woods, across a brook requiring a two-hundred-yard carry, with advantage to the long hitter who can hug the trees which jut out in the elbow at the right. Second shot an iron to be raised somewhat sloping Green, with encircling traps and a comparatively narrow entrance. Here great premium is placed on length and accuracy of drive.

