

The New Toro Junior Tractor Is Powerful and Sturdy



Graceful lines and extreme flexibility are among the dominant features of the new Toro Junior Tractor. Standard equipment includes self-starter, generator, battery and full length muffler, insuring quiet operation.



The chassis on the new Toro Junior is built of four-inch steel channel sections, and will remain absolutely rigid, regardless of operating difficulties. The large cellular radiator provides ample cooling at all times.



The sturdy bevel gear rear axle will transmit full possible drawbar horsepower. Pulling out the rear end, a fault common to most of the present day small tractors, is absolutely eliminated in the new Toro.



The all steel, electrically welded dump box on the new Toro is spring mounted and balanced correctly, and can be unloaded by the driver without leaving his seat.



The new Toro Junior Model B-30 has a wheel base of 98 inches, and is equipped with a dump box. Exhaustive field tests have proven that the new Toro will climb a 30% grade with a full body load. Note the trim appearance and well balanced lines.

The First Completely Built Small Tractor

IN appearance, power, sturdiness and flexibility the new Toro Junior offers many distinctive advantages over the makeshift revamped automobile tractors that have been on the market up to the present time. It matches fully the performance of any golf course tractor, regardless of its weight or size. It will stand up day after day and give uninterrupted trouble-free service.

Surprising Power. The New Toro Junior with its Ford Model A heavy duty motor, has a wide range of pulling power, which enables it to overcome any difficult operating conditions. It can pull five mowers in high gear over any reasonable grade, and three mowers over exceedingly severe grades that would stall practically any tractor, regardless of weight or size. When used for utility work, carrying dirt or sand, the Junior will climb a 30% grade with a full yard body load. The 15-inch rear drive wheels give full protection, and slippage of wheels is reduced to the minimum. The Junior is furnished complete with a starter, generator and battery.

Sturdy and Durable. The rear axle is a heavy bevel gear axle, built especially for heavy pulling and will transmit full possible drawbar horse-power without over-straining the axle shaft. No pulling out in the rear end of the new Toro Junior.

The chassis frame is an especially built rigid frame on which we use four-inch steel channel sections, tied together in rigid position so that there is no weaving, regardless of what position the tractor is placed in. Three-point suspension on the front wheels.

The wheels on the new Toro are all steel and will be furnished with rolled edges. Front wheels are 28x7, rear wheels 30x15, with 144 removable steel spikes in each rear wheel.

Noiseless in operation. Drive gears are fully enclosed and a full length muffler runs directly under the motor, discharging back of the rear axle so that exhaust noises are eliminated.

Write today for the new Toro 1930 catalog giving complete information on all the new additions and improvements in the Toro line of labor-saving equipment.

Toro Manufacturing Co., 3042-3160 Snelling Ave., Minneapolis, Minn.

Service Stations at— New York, N.Y., Philadelphia, Pa., Jacksonville, Fla., Cleveland, Ohio, Chicago, Ill., San Francisco, Calif.,
Los Angeles, Calif., Newton, Mass., Yonkers, N.Y., Syracuse, N.Y., Troy, N.Y., Detroit, Mich.,
Indianapolis, Ind., Des Moines, Iowa, Kansas City, Mo., Dallas, Texas, Toronto, Ont., Can., Winnipeg, Man.,
Calgary, Alta., Can., Buenos Aires, S.A., Hamburg, Germany, H. R. Jahn, Export Distributor, N.Y.

The NATIONAL GREENKEEPER

(Registered U. S. Patent Office)

Official Organ of The National Association of Greenkeepers of America

Published monthly at 405 Caxton Building, Cleveland, Ohio.

Contents copyright, 1928, by The National Greenkeeper, Inc., Publishers.

Robert E. Power, President and Editor; Frank H. Pelton, Sec'y.; C. F. Lowe, Treas.; M. J. Fox, Asst.-Sec'y

Herman Sonneborn, Eastern Representative, 152 W. 42nd St., New York City

Entered as second-class matter, Aug. 25, 1928, at the post office, Cleveland, Ohio, under act of March 3, 1879

All Rights Reserved—None of the contents of this Magazine, either wholly or in part, may be reprinted without permission.

Contents

AGAIN THIS FEBRUARY AND EVERY FEBRUARY	WE'RE OFF FOR LOUISVILLE	18
THEREAFTER By John Morley	MATT BEZEK ELECTED	20
N. A. G. A COMMITTEES FOR 1930	OFFICIAL PROGRAM	22-23
RE-TURFING FLORIDA GOLF COURSES	Educational Conferences	
By Joe A. Roseman	Meetings and Entertainment	
MINIKAHDA'S WORK BUILDINGS	WHAT TO SEE AT LOUISVILLE	25
By Chas. Erickson	Descriptions of Show Exhibits	
THE GREEN SECTION MEETING	AROUND THE OFFICE DESK	40
By E. W. Doty	Why not ask the man who knows	
	By A. E. Lundstrom	
	MARKET PLACE AND BUYERS' GUIDE	41

Officers—National Ass'n of Greenkeepers of America

John Morley, *President*
Youngstown Country Club
2248 Selma Avenue
Youngstown, Ohio

John MacGregor, *First Vice Pres.*
Chicago Golf Club
Box-717, Wheaton, Illinois

Lewis M. Evans, *Second Vice Pres.*
Cedarbrook Country Club
Mt. Airy, Philadelphia, Penn.

Wm. J. Sansom, *Third Vice Pres.*
Toronto Golf Club
Long Branch, Ontario, Can.

George Davies, *Fourth Vice Pres.*
Big Springs Golf Club
Louisville, Kentucky

John Quail, *Secretary-Treasurer*
Highland Country Club
426 Highland Avenue
West View, Pittsburgh, Penn.

DISTRICT VICE PRESIDENTS

ELMER F. AFFELDT, Glen Oaks Golf & Country Club, Great Neck, L. I., New York.

JOHN ANDERSON, Crestmont Country Club, W. Orange, N. J.

WALTER G. ANDERSON, Sunnehanna Country Club, Johnstown, Penn.

A. E. ARNOLD, Masonic Country Club, Grand Rapids, Mich.

C. J. AUGUSTO, Del Monte Country Club, Del Monte, Calif.

G. W. BARNES, Banff Springs Golf Club, Banff, Alberta, Canada.

C. G. BARTON, Sylvania Golf Club, Toledo, Ohio.

C. BASHAM, River Crest Country Club, Fort Worth, Texas.

ALEX. BINNIE, Shoreacres Golf Club, Lake Bluff, Ill.

JAMES BOLTON, Berkshire Country Club, Reading, Penn.

W. A. BOSTIC, Biltmore Forest Country Club, Biltmore, N. C.

CARL A. BRETZLAFF, Meridian Hills Country Club, Indianapolis, Ind.

PAUL BROCKHAUSEN, New Blue Mound Country Club, Wauwatosa, Wisconsin.

FRED A. BURKHARDT, Westwood Country Club, Cleveland, Ohio

JOHN CAIRD, Manito Golf Club, Spokane, Wash.

J. O. CAMPBELL, Wethersfield Country Club, Hartford, Conn.

JAMES CONNAUGHTON, Monroe Golf Club, Pittsford, New York

DENNIS CROWLEY, Wollaston Golf Club, Boston, Mass.

CARL DAVIS, Moonbrook Country Club, Jamestown, New York

E. E. DAVIS, Meadville Country Club, Meadville, Penn.

THOS. E. DOUGHERTY, Springhaven Country Club, Chester, Penn.

GORDON W. EARL, Ogdensburg Country Club, Ogdensburg, N. Y.

CHARLES ERICKSON, Minnekahta Club, Minneapolis, Minn.

D. ALLEN FRASER, Berkshire Hunt and Country Club, Lenox, Mass.

FORD GOODRICH, Flint Country Club, Flint, Michigan

JOHN GRAY, Essex Golf and Country Club, Sandwich, Ontario

HARRY HANSON, Maple Bluff Country Club, Madison, Wisconsin

H. HAWKINS, Lakeview Golf Club, Port Credit, Ontario

ROBERT HENDERSON, Country Club of Buffalo, Williamsville, N. Y.

ARTHUR J. JENSEN, Fargo Country Club, Fargo, N. D.

OSCAR JOHNSON, Happy Hollow Club, Omaha, Nebraska

M. W. LAWRENCE, West End Country Club, New Orleans, Louisiana

GEORGE LIVINGSTON, Belle Meade Country Club, Nashville, Tenn.

HUGH LUKE, Garden City Country Club, Garden City, N. Y.

WILLIAM MAYNE, Jasper Park Lodge, Alberta, Canada

JOE P. MAYO, Pebble Beach Country Club, Pebble Beach, Calif.

CHESTER MENDENHALL, Sim Park Golf Club, Wichita, Kansas

T. H. RIGGS MILLER, Richmond Country Club, Staten Island, New York

HUGH C. MOORE, St. Simon's Island Golf Club, St. Simon's Island, Georgia

JAMES MUIRDEN, Ridgewood Golf Club, Cincinnati, Ohio

JOSEPH O'GRADY, New Bedford Country Club, New Bedford, Mass.

WILHELM PETER, Lynnhaven Golf Course, Kansas City, Mo.

JOHN PIRIE, Country Club of Fairfield, Fairfield, Conn.

CLARENCE PLOSS, Salem, Mass.

WALTER C. REED, Westwood Country Club, St. Louis, Mo.

CAPT. DAVID L. REES, Progress Country Club, Purchase, New York

CHARLES A. ROBINSON, Brookside Country Club, Lake Tarleton, Pike, N. H.

GEORGE SARGENT, Scioto Country Club, Columbus, Ohio

ROBERT SCOTT, Baltimore Country Club, Baltimore, Maryland

H. E. SHAVE, Oakland Hills Country Club, Birmingham, Mich.

FRED J. TIENKEN, Colorado Springs, Colorado

D. R. VALENTINE, Beaumont Country Club, Beaumont, Texas

JOSEPH VALENTINE, Merion Cricket Club, Philadelphia, Penna.

GEORGE WELLIN, Tumblebrook Country Club, New Britain, Conn.

JACK WELSH, Wakonda Country Club, Des Moines, Iowa

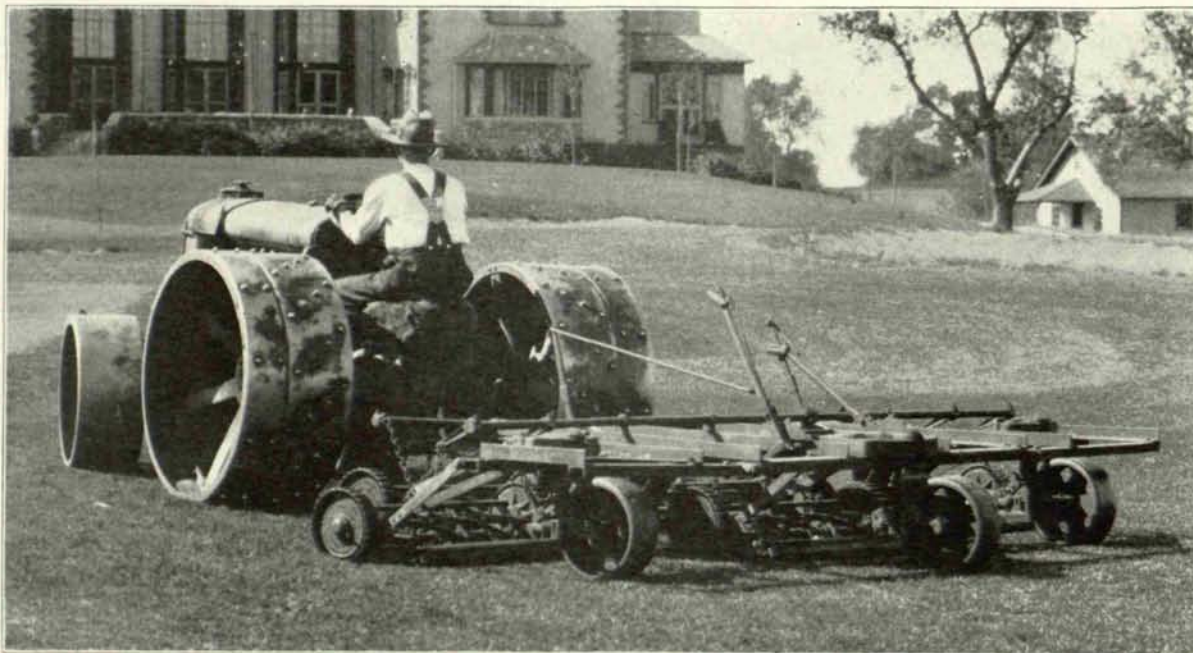
WALTER WOODWARD, Senneville Country Club, Montreal, Quebec, Canada

Official communication, membership dues, employment, etc., should be mailed direct to the Secretary. Editorial articles, photos, subscriptions and golf show requests mail to 405 Caxton Bldg., Cleveland

BULLDOG CUTTING UNITS are

... stronger than any other

..... lighter than any other



BULLDOG cutting units have low wheels and a stocky, rigid frame. They have strength that cannot be equaled by high-wheeled cutting units, with their long side frame.

For the same reason—low wheels—the Ideal Bulldog is lighter in weight. The wheels weigh less. The side frame weighs less. *The towing frame is extra strong and heavy.*

And, because Bulldog cutting units are *pushed* into the work, instead of pulled, they need *no* dead weight to hold them to the ground. Send for illustrated brochure on keeping fairways smooth.

IDEAL POWER LAWN MOWER COMPANY

444 Kalamazoo Street

Lansing, Mich.

BRANCHES:

413 West Chicago Avenue
Chicago, Illinois

273 Boylston Street
Brookline, Mass.

237 Lafayette Street
New York City

161 Vester Street
Ferndale (Detroit) Mich.

Dealers in all principal cities

Canadian Distributors: Aikenhead Hardware, Ltd., 17 Temperance Street, Toronto, Ont.

IDEAL BULLDOG MOWERS

Again This February and Every February Thereafter

BY JOHN MORLEY

President, The National Association of Greenkeepers of America

A CORDIAL invitation is extended to every greenkeeper and Green committee chairman in the United States and Canada to attend our 4th Annual Golf Show and Conference of the National Association of Greenkeepers of America at the Jefferson County Armory, Louisville, Kentucky, February 4-7.

It is an Exposition made to order. At this Exposition is shown golf and country club products of the leading manufacturers of the United States and Canada. It provides a competitive market place of convenience for the up-and-doing greenkeeper to inspect in three days more modern and efficient equipment than he would see in a month of travel and expense. Everything in golf course maintenance under one roof.

That Green committee chairmen and golfers generally are taking a keen interest in the National Greenkeepers' Conference, Convention and Golf Show is evidenced by a recent letter from one of the chairmen of one of the leading district Green Sections who says, "Many of the chairmen of Green committees of my district will be more than pleased to attend the Convention, Conference and Golf Show, and I am quite sure will be glad to lend any small assistance possible to make your meetings and gatherings a success."

The program of papers to be read and dis-

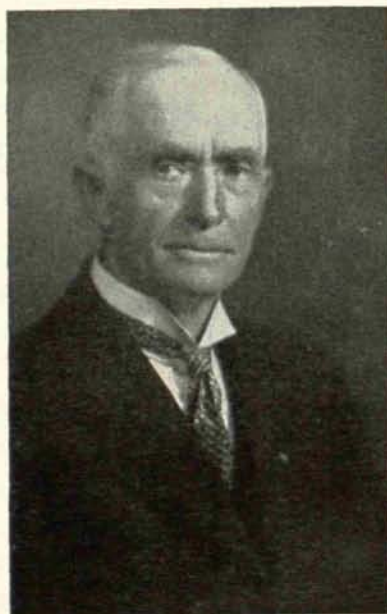
cussed is attracting nation-wide attention and golf clubs in all parts of the country advise that they will send their greenkeepers to Louisville at the club's expense. Last year the Green Section of the United States Golf Association recommended all clubs to send their greenkeepers to the New York and Chicago shows. This year we will be the only ones to stage a Golf Show.

We will have on exhibition four times as many exhibitors as there were at the Chicago and New York shows, besides giving to those who attend the benefits of all the latest thoughts and discoveries pertaining to soils, grasses, fertilizers and various turf diseases, given by the best talent of these various subjects available.

Greenkeepers Should See the Light

A GREENKEEPER should remember practical knowledge along with efficient experience is power and the wages of a greenkeeper are usually based

upon these facts. It has been stated that the welfare of one is the concern of all, yet do we realize that it may be considered unfair when we take into consideration the fact that three-fourths of the greenkeepers of America who are members should have to give their knowledge and experience to the other one-fourth who are eligible to become members, but who hold aloof and stand idly by and criticize. To the latter let me say, we are trying to make



JOHN MORLEY

conditions better for you but we hope you will see the light sooner or later.

Each year we endeavor to make our meetings more instructive and educational because we realize that modern science has changed the world and that in order to keep ahead we must keep step with the times. You have observed some of the golf architect's methods of constructing a putting green and you have also observed that often, in a very short time, a number of these putting greens have been reconstructed by the chairman of the Green committee and the greenkeeper. It will be worthwhile to spend the time and expense to observe the contest at the Golf Show between the greenkeepers from the East and the greenkeepers from the West showing, according to the lay of the land, the most modern methods at the least possible cost.

Last year at Buffalo our attendance was above the average, yet we were a little disappointed in not having more members to attend the Convention. This was probably due to the fact that we tried to crowd too many attractions in so short a period of time. A number of members brought their wives and families and were tired out and desired to return home.

Louisville Has Improved Program

THIS year at Louisville we are endeavoring to avoid this condition. So we are starting the Golf Show and Conference one day earlier and instead of listening both morning and afternoon to able speakers we feel that you will enjoy and digest what they have to say by having only one session each day. This will give you a better opportunity to go shopping and sight-seeing. We do want you to be present at the first session, Tuesday afternoon, which opens at 2:00 P. M. sharp, for the reason that we are favored for the first time in our history in having three presidents of the leading golf clubs in the district of Louisville to extend to us words of greeting.

If there are any greenkeepers or in fact anyone who is desirous of seeking information along any particular line, I would suggest in order not to disturb the speaker before or dur-

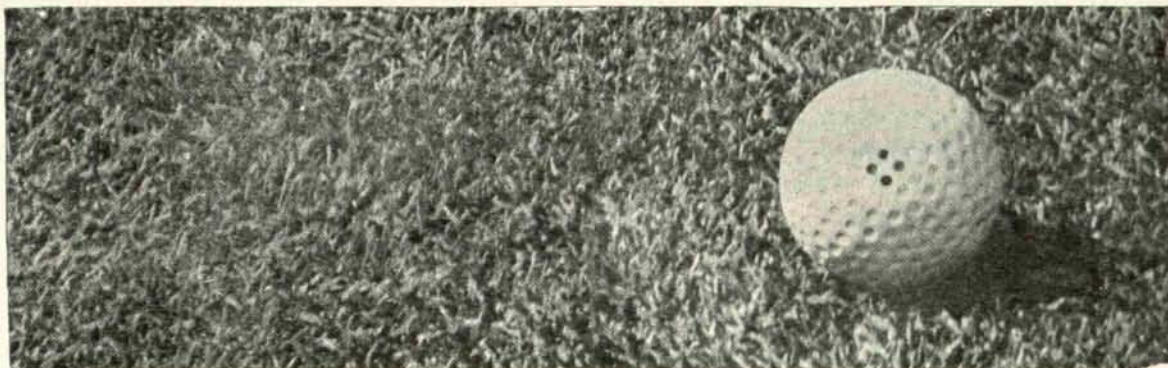
ing the time he is giving his address that they write it down plainly on a sheet of paper and give it to the chairman, Professor George M. McClure who will see that the speaker gets it in plenty of time and at the close of his address he will be able to answer your questions more satisfactorily.

Again we noticed the absence from the Convention of a few of our shy members who think their presence is not needed. Let me express to you these facts—give me a member who is usually shy and avoids the limelight, has little to say in public or at any of our meetings, but is always in his place on the sidelines. It is he who gives the officers confidence and encouragement. His face is a beacon, always in its proper position and pointing out the safe channel into the harbor. He is a living evidence that our association is not an intangible something but a sound and enduring structure. Such a member attracts esteem as a magnet draws a needle. He may never be able to make a stirring address but he furnishes the inspiration for all addresses which are truly moving. It is for him and those like him that the leaders of our association actually work.

Convention on Friday Forenoon

OUR Convention will be held on Friday forenoon, February 7. This will give you an opportunity to remain and witness the midnight show, which as per usual will be a stag affair. George Davies, chairman of the Entertainment Committee has selected a fine program for this event. You can observe therefore that we have planned and made all arrangements so that we can all depart for our respective homes Saturday morning.

I might also state that we have also taken a rough corner off the annual banquet program which will be held Thursday evening. We believe that three days of listening to speakers, no matter how entertaining their subjects are is enough. There should be a limit to everything, so at the coming banquet there will be no speech making for we have substituted a musical program instead. According to Mrs. Julia Varn Hagen, president of the Wives of National Greenkeepers there will be a large number of ladies attending.



A Piece of Cocoos Bent Turf

For the Finest Turf Sow Bent Grasses

Because of the extreme fineness and beauty of turf produced from **Bent Seed**, we recommend the use of a certain percentage of Bent in all mixtures for *Fairways* and *Lawns*. Its superiority for use on golf courses, especially the putting greens, has long been recognized.

For Early Spring Sowing, We Offer

Grass Seed

of Known Quality

TESTED for PURITY and GERMINATION

South German Bent Colonial Bent Rhode Island Bent (*Washington Grown*) Bent Stolons

Wholesale prices on the above, or any other turf producing grasses, such as Fancy Red Top, Kentucky Blue, Cheving's N. Z. Fescue, Poa Trivialis, Bermuda Grass, etc., upon request.

COCOOS BENT Because of the fine turf producing qualities of this Creeping Bent, it is meeting with favor in sections other than the Pacific Coast, where it is already recognized as the outstanding Putting Green Grass.

Cocoos Bent is botanically known as *Agrostis maritima*, but all strains of *Agrostis maritima* are **not** Cocoos Bent. We offer the **true Cocoos Bent**, selected for us by Dr. Lyman Carrier, the finest of the *Agrostis maritima* grasses in sealed bags.

Per lb. \$2.50, per 10 lbs. \$22.50, per 100 lbs. \$200.00

Special Putting Green Bent Formula — Consists of imported and domestic grass seeds of the highest quality, that will produce a fine, uniform and enduring turf. Use 15 lbs. to 1000 sq. ft., one-quarter to one-half this quantity for renovating **25 lbs. \$18.75, 100 lbs. \$70.**
Standard Putting Green Formula, 25 lbs. \$16.00, 100 lbs. \$60.

Superfine Fairway Formula (with Bent) — Contains Bent Seed, as well as Kentucky Blue Grass, Superfine Red Top and Cheving's N. Z. Fescue. We adapt it to your conditions so that a uniform and enduring turf is secured **25 lbs. \$13.00, 100 lbs. \$50.**
Fairway Formula, Fine Quality, 25 lbs. \$10.00, 100 lbs. \$35.

Special formulas for Tees, Rough, Bunkers, Polo Fields, Airports, Club or Private Lawns, furnished upon request

Remember:— We are one of the largest direct contractors for foreign-grown Grass Seeds in the United States. Over thirty years of Seed Service have enabled us to segregate those collectors of Bent Seeds who are reliable from those who are not; to single out those growers of Cheving's Fescue whose strains are pure; also to contract for true American-grown seeds of high vitality. All our seeds are botanically true to name and are cleaned and re-cleaned until brought up to the highest possible state of purity and germination, special care being given to the elimination of weed seeds.

Without obligation, we shall be pleased to send a representative who, from long experience, is qualified to advise regarding grasses and furnish such other information as is necessary for the best results

Stumpp & Walter Co

Specialists in Golf Grass Seeds and Equipment

30-32 Barclay Street

New York City

I have for this occasion appointed a committee on Reception and I want this committee to be active and introduce all members and even those who are not members and endeavor to make them all feel at home.

Register First

UPON arriving at Hotel Kentucky which is to be our headquarters at Louisville, inquire or else tell them the price of room you desire for all of the large up-to-date hotels have standard rates and various priced rooms according to locations, etc. If you should find the prices too excessive for you consult one of the Committee on Registration who will di-

rect you to a lower priced hotel. Immediately after engaging your room proceed to the Armory which is only two blocks from headquarters and register where you will be furnished with an official badge of the association and a copy of the program.

The officers and chairmen of the various committees have about completed their labors. They have done their best to give you four days of enjoyment along educational and recreational lines. They now expect each member to do his duty by being present and co-operating with them. For we are often reminded of the convincing statement, "He lives a full life that serves".

N. A. G. A. Committees for 1930

Committee on Golf Show

Fred A. Burkhardt, Chairman, Cleveland Ohio; Grange Alves, Cleveland Ohio; George Davies, Louisville, Ky.; Lewis M. Evans, Philadelphia, Penna.; Victor George, LaFayette, Indiana; Emil Loeffler, Pittsburgh, Penna.; John MacGregor, Chicago, Ill.; John Morley, Youngstown, Ohio; Walter C. Reed, Saint Louis, Mo.; Captain David L. Reese, Purchase, N. Y.; Herbert S. Shave, Detroit, Mich.

Committee on Finance

Christopher Bain, Chairman, Cleveland, Ohio; John Morley, Youngstown, Ohio; Wm. J. Rockefeller, Toledo, Ohio; Alex McPherson, Detroit, Mich.; Grange Alves, Cleveland, Ohio; Ford Goodrich, Flint, Michigan; George Sargent, Columbus, Ohio.

Committee on Law

John Pirie, Chairman, Southport, Connecticut; W. D. Chinery, Eglinton, Ontario, Canada; C. G. Barton, Toledo, Ohio; Hugh C. Moore, Brunswick, Georgia; E. J. Claire, West Boylston, Mass.; R. G. Sheldin, Cleveland, Ohio; Robert Henderson, Buffalo, New York.

Committee on Death Benefit Fund

John Pressler, Chairman, Sewickley, Penna.; Ralph C. Martin, Shanopin, Penna.; Alex McCallum, Scarborough, Ontario, Can.; Louis Barkdull, Kokomo, Indiana; Fred Kruger, Matteson, Illinois; Charles Erickson, Minneapolis, Minn.; George Wellin, New Britain, Conn.

Committee on Registration

Harry A. Burkhardt, Chairman, Amherst, Mass.; M. J. Fox, Cleveland, Ohio.

Committee on Benevolence

John MacGregor, Chairman, Wheaton, Ill.; C. J. Zink, Warrensville, Ohio; Robert Duguid, Evanston, Ill.; D. Allen Fraser, Lenox, Mass.; Edward Dearie, Jr., Norwood Park, Ill.; Tom Nicoll, Los Altos, California; Ernest A. Morris, Lexington, Ky.

Committee on Reception

George Davies, Chairman, Louisville, Ky.; J. O. Campbell, Wethersfield, Conn.; A. E. Arnold, Grand Rapids, Mich.; John Anderson, West Orange, N. J.; C. Basham, Fort Worth, Texas; James Bolton, Reading, Penna.; Carl A. Bretzlaff, Indianapolis, Ind.; Thomas J. Galvin, West Barrington, Rhode Island; Thomas F. Fahey, Winchester, Mass.; Joseph Williamson, Columbus, Ohio; Hugh Luke, Garden City, L. I. New York; Jack Welsh, Des Moines, Iowa; Joseph O'Grady, New Bedford, Mass.; Albert Kemp, Richmond, Virginia.

Committee on Permanent Organization

Herbert E. Shave, Chairman, Detroit, Mich.; Joe Valentine, Philadelphia, Penna.; Alex Pirie, Chicago, Illinois; H. Lloyd, N. Toronto, Canada; Elmer F. Affeldt, Great Neck, L. I., New York; Frank W. Ermer, Cleveland, Ohio; Victor George, LaFayette, Indiana.

Committee on Meeting Place

Robert J. Hayes, Chairman, Pelham, N. Y.; Joseph Williamson, Columbus, Ohio; Fred A. Burkhardt, Cleveland, Ohio; Fred Kruger, Matteson, Illinois; H. Hawkins, Port Credit, Ontario, Can.; John Pressler, Sewickley, Penna.; Lewis M. Evans, Philadelphia, Penna.

Committee on Appeals and Grievances

James Muirden, Chairman, Cincinnati, Ohio; Joseph P. Mayo, Pebble Beach, California; H. Hawkins, Port Credit, Ontario, Canada; E. E. Snyder, Hartsville, Ohio; Anthony G. Wagner, Rock Island, Illinois; Alex Binnie, Chicago, Illinois; Al Schardt, Buffalo, N. Y.

Committee on National Greenkeeper

Alfred E. Lundstrom, Chairman, Brooklyn, N. Y.; Fred Jacobs, Pittsburgh, Penna.; Joseph T. Varn Hagen, Sr., Redford, Mich.; Wm. J. Sansom, Long Branch, Ont., Canada; Robert J. Hayes, Pelham, New York; George Davies, Louisville, Ky.; John McNamara, Jr., Pittsburgh, Penna.

Greenkeepers Everywhere Profit By the Practical Experience and Scientific Knowledge of LYMAN CARRIER



Lyman
Carrier

HUNDREDS of successful greenkeepers in the United States and Canada have come to regard no higher authority on turf development and maintenance, than Lyman Carrier.

For more than a quarter century, Lyman Carrier has specialized in the production and culture of better turf. As a result of these years of research, he introduced LECCO, a complete grass food, and COCOOS, a creeping bent seed for putting greens.

Mr. Carrier's knowledge of turf and turf maintenance is based on the sound foundation of both practical experience and thorough scientific training. He was raised on a farm, graduated with a degree of Master of Agriculture from the Michigan State College and later served as Agronomist in the Virginia Experiment Station. His work merited the recognition of the U. S. Department of Agriculture where he served as Assistant Scientist and later as Agronomist.

His methods of turf culture will help you develop consistently better turf—and win the praise of your club members.



These men are holding a piece of Cocoos sod planted on an Ohio course three years ago. Note its fine texture and sturdiness.

COCOOS Bent Seed

GENUINE Cocoos is a seaside variety of creeping bent. It was discovered in the Coquille Valley in Oregon by Lyman Carrier after years of searching throughout the country for an ideal turf grass.

Cocoos is botanically known as "Agrostis Maritima," but all strains of Agrostis Maritima are NOT Cocoos bent.

Famous Golf Clubs on the Pacific Coast first proved that genuine Cocoos combines, as no other grass, the qualities required of a perfect putting surface. Since that time, Inland Clubs have developed Cocoos greens of equal beauty.

Cocoos is silk-like in texture, stands erect, and maintains its bright green color. Because of its creeping nature, Cocoos spreads rapidly, crowds out weeds, and forms a thick carpet-like turf. It withstands hard usage, resists pests and disease, and thrives even under adverse weather conditions.

Seed supply limited. Write today for illustrated booklet and prices.

LECCO---Complete Grass Food

LECCO is a complete grass food—food prepared especially for grass—food in a form which the grass organism can readily assimilate. The formula from which Lecco is made was adopted by Lyman Carrier only after many years of exhaustive study and research into the habits and nature of grass.

Lecco is doing for fine turf what the balanced ration is doing for fine dairy herds. Lecco substitutes science for the old fashioned "hit and miss" system that has proven so expensive.

Lecco makes the compost pile a thing of the past. Lecco is a known quantity of sterile food. Compost is an UN-known quantity of uncertain matter, disease and pest-infested, troublesome and expensive.

Write for Lyman Carrier's method of eliminating the compost pile and producing more beautiful turf—with less labor and at less expense.

WRITE TODAY
for illustrated booklet
on Lecco and Cocoos
Address office at
Willoughby, Ohio

LYMAN CARRIER

Plant at
GRANGER
INDIANA

Office at
WILLOUGHBY
OHIO



Applying top dressing of native soil to obtain proper putting surface and scattering Lecco, the complete grass food.

Tested Seeds

NO matter how well the soil has been prepared, or how fully the thousand and one little details have been taken care of—if the seeds you plant are not right, it is largely wasted effort. This is why we emphasize, at all times, what we term "The Henderson Standard of Quality," rather than our prices.

We have always believed that there is a demand for the highest grade of Grass Seed—Grass Seed that could be depended upon, and the results have fully justified this belief.

Let us quote you on your requirements, and you will be surprised to find that the prices for Seeds of the Henderson Quality are about the same as you have been paying, but with a vast difference as to results.

We can help you with your course problems. Our staff of trained men is competent to assist you, whether it be a complete new course, the renovation of your present one, or the usual problems that come from day to day.

An inquiry does not obligate you in any way.

PETER HENDERSON & CO.

SEEDSMEN

Everything for the Golf Course

35 Cortlandt St. :- :: New York City