

England  
Sends  
Its  
Congrat-  
ulations

ESTABLISHED 1825

**W. W. JOHNSON & SON, LTD.**

SEED GROWERS & MERCHANTS

*Boston*

ENGLAND

ALD/LW.

The Editor,  
The National Greenkeeper,  
Caxton Building,  
CLEVELAND, Ohio. U.S.A.

May  
12th  
1930.

Dear Sir,

Your letter of April 24th has been received, and I also acknowledge the safe arrival of the back numbers of your National Greenkeeper, for all of which please accept my best thanks, and as regards the cost of these please advise us the amount we are indebted to you so that it can be remitted promptly by cheque.

As you know, we are subscribers to your publication, and had already read the articles referred to in the third paragraph of your letter, but we thought perhaps there might be some certain pamphlets or other articles issued in book form that might have escaped our attention, and it was for this reason that we wrote to you on this subject.

The writer congratulates you on your magazine, which is unique in any country.

We have a Research Station here at Bingley, in Yorkshire, which is doing very valuable work and adopting methods similar to those used by the agricultural colleges and others in your country that specialise in Grasses for golf courses like your college at Amherst, Mass., and there is no doubt that the field is very large and the opportunities are many.

We look forward every month to receiving your publication, and congratulate you on the amount of interesting matter that you put into it, and the instructive articles it contains, and there is no doubt that the golf courses in America are the better off because of the close study and help afforded them by the National Association of Greenkeepers of America, and the writer speaks from personal experience, as it has been his pleasure to play on several of your best courses at different times when he has visited your country.

Yours very truly,

W. W. JOHNSON & SON, LIMITED

*W. W. Johnson*  
Director



## You Tell 'Em

The National Greenkeeper,  
Cleveland, Ohio.

Our greenkeeper, Mr. J. Nicoloff, became very, very tired from having to continually tell members not to "tee off" on the nice green tee but from between the white markers. Their *plowing* became obnoxious.

**NO TEE OFF  
IF YOU CAN  
AS B'BBY JONES  
THEN OFF  
FROM THIS →**

The enclosed miniature sign is a duplicate of the original which is placed at an advantageous corner of the mutilated tee. He would like to see a photograph of the same reproduced in your publication.

Sincerely yours,

Custodian, Oberlin (Ohio) Golf Course.

## New Golf Courses

### INDIANAPOLIS, IND.

Cedar Lake Country Club, Inc., no capital stock; objects, purchase, take, lease or otherwise acquire land and buildings for the purpose of providing a country club near Cedar Lake. Incorporators, S. A. Finger, William M. Steele, William E. Snider, Chester D. Kern and C. E. Stepping.

\* \* \*

### PRINCETON, ILL.

A special committee of the Bureau Valley Country Club, consisting of Attorney Perry D. Trimble and Hugh Ferris, launched a subscription campaign among members of the club for \$5,000, with which to purchase and improve a twelve-acre addition to the club grounds, and also build grass greens on all nine holes.

\* \* \*

### PLEASANTVILLE, N. Y.

Westchester golfers are to have, probably by the end of 1931, a new public county golf course, the fifth to be constructed by the Westchester County Park Commission. The new course, eighteen holes, will be laid out in Greenburgh, west of Central Avenue, near Hartsdale Avenue, the extension of Fenimore Road. An initial

appropriation of \$200,000 for the course is asked by the Commission of 1931 work.

\* \* \*

### SHELBYNA, MO.

Harry Robertson plans to start immediately on the construction of a nine-hole golf course on his farm eight miles south of Shelbyna. The course will have a total length of 3,316 yards, the longest hole being 545 yards. Mr. Robertson believes he will have between 50 and 60 members of a golf club at \$15 yearly dues, nearly that many from Shelbyna and Paris having already agreed to go into it.

\* \* \*

### BRUNSWICK, GA.

The Young Men's Club is very much interested in the establishment of a municipal golf course in Brunswick and its special committee, with George Cunningham as chairman, is working on the project. An interesting report was made at a recent meeting, showing that suitable land can be acquired for the club, a house and a nine-hole course built for about \$25,000. Several sites had been investigated.

\* \* \*

### WORCHESTER, MASS.

Plans for a membership effort and a program of procedure will be drawn up at a meeting of the group of Auburn and Worcester residents interested in converting the Harry W. Goddard estate in Auburn into a new country club. The group has taken an option on the property and proposes to construct a nine-hole golf course, adding another nine later, and to alter the 11-room house into a modern and attractive club building. Those interested in the project are Arthur W. Warren, Eberett W. Stone, George A. Duval, George Rawson, James E. Fish and Fred Kingdom.

\* \* \*

### SIOUX CITY, IA.

Interest in obtaining a municipal golf course for residents of Leeds and the North Side was shown at a recent meeting of the Floyd Valley Chamber of Commerce.

The organization selected a committee to find a suitable location for such a course. Members of the committee are: Frank Skriyan, chairman; Verne J. Glood, W. J. Kineen, George Giesler and W. A. McNulty. Dr. J. H. Lynch is president of the Floyd Valley Chamber of Commerce. Several locations are being considered by the committee, which is assured the cooperation of Milton Perry Smith, commissioner of parks.



CANADIAN GOVERNMENT OFFICIAL INSPECTING A FIELD OF PRINCE EDWARD ISLAND BENT

## HUBBARD NURSERIES CREEPING BENT STOLONS

Washington and Metropolitan Strains

Pure, free of weeds, and of one season's growth

DR. AMOS F. HUBBARD, N. Kingsville, Ohio





## Around the Office Desk



### Fairway Irrigation for LaFayette

The National Greenkeeper,  
Cleveland, Ohio.

Gentlemen:

I received a letter from our worthy president asking me to write and tell just what we did to overcome this exceptionally dry summer and I am sorry that I didn't get time to write you sooner, but we installed a fairway sprinkling system.

Our Green committee chairman, Mr. Fred Holmes, made the suggestion which passed the Board of Directors and the system, that is the Buckner Valve system, is now installed on numbers one, three and four fairways.

As I did not employ any extra help to do this work it only cost the club \$795.00 for material. This includes a plumber's outfit, so we could cut all the pipe on the job, but it does not include the valves and sprinkler heads which cost about \$150.00.

Mr. Holmes suggested that travelling sprinklers be used on numbers five, seven and eight fairways, but I am in hopes that this will also be taken care of by valves as the cost of installation is so small and the operation of the sprinklers so much more satisfactory that I have no doubt at all that the Board will give us sufficient funds to complete our system as started.

VICTOR GEORGE, *Greenkeeper*,  
Country Club of LaFayette, LaFayette, Indiana.

### Obituary

ALEX ROSS

ON Saturday, September 27, 1930, Alex Ross, of Excelsior Springs, Missouri, passed on to that perfect course where troubles fail to exist. Mr. Ross was a charter member of the National Association of Greenkeepers of America, having joined when the organization was in its infancy.

Mr. Ross was born February 21, 1866, at Nairn, Scotland and when still quite a young man went to Glasgow to enter the employ of Andrew Forgan, professional at

## MILORGANITE

### THE IDEAL TURF FERTILIZER

For further information address

SEWERAGE COMMISSION

508 Market Street

Milwaukee, Wis.

one of the Glasgow clubs. In 1899 he came to the United States and became employed in the Chicopee Falls factory of A. G. Spalding & Bros., where he worked until 1904 when he was transferred to the Nassau street store of the same company. He began his greenkeeping career in 1910 when he became attached to the Excelsior Springs course. He was also the professional at this club.

When he took over the management of the Excelsior Springs course it was still in the construction stage as a nine-hole course. He has superintended every detail of its enlargement and development for the past twenty years and has seen it grow from nine holes to thirty-six. It is one of the outstanding courses of that section of the country and was kept in faultless shape.

The greenkeeping profession lost a valuable man when it lost Alex Ross, and his place will be hard to fill. He was a veteran who made good and using the words of a regular visitor to his course, "The course will stand for a long time to come as a fitting monument to the personal efforts of Alex Ross."

The National Association of Greenkeepers of America extends to the family and their friends our deepest sympathy and condolence in the loss of one so near and dear to them.

### The World's Lowest Priced Golf Course Tractor

Priced \$475 Upward

Write for description,  
prices and easy terms



E. G. STAUDE  
Mak-A-Tractor Co.  
2630 University Avenue  
ST. PAUL, MINNESOTA

Send dues and official communications to 1101  
Farmers Bank Building, Pittsburgh, Pa.

Any correspondence requiring the Secretary's personal  
attention may be sent to either 1101 Farmers  
Bank Building, Pittsburgh, Pa., or to—

**JOHN QUAILL, Secretary**

426 HIGHLAND AVENUE

WEST VIEW, PITTSBURGH, PENNA.

Address all communications relating to the  
Golf Show at Columbus, Ohio, in 1931 to—

**FRED A. BURKHARDT**

Chairman, Show Committee

405 CAXTON BLDG., CLEVELAND, OHIO



# Market Place and Buyers' Guide

Where reputable manufacturers and dealers list and describe their products. Greenkeepers are requested to write the Market Place for any special information they desire about supplies or equipment

**Airport Drainage**  
Armco Culvert Mfrs. Association  
Wendell P. Miller and Associates

**Ball Washers**  
J. Oliver Johnson, Inc.  
Worthington Mower Company

**Ball Locators**  
Worthington Mower Company

**Bent-Coos County State Sealed and Certified**  
J. M. McCullough's Sons Company

**Bent Seed—Cocoas Creeping**  
Stumpp & Walter Company

**Bent Seed—Prince Edward Island**  
J. M. McCullough's Sons Co.

**Bent Stolons**  
Hubbard Nurseries  
O. M. Scott & Sons Co.  
Stumpp & Walter Co.  
Ohio Humus Products Co.  
Illinois Grass Co.

**Bluegrass—Seed**  
J. G. Peppard Seed Company

**Brown Patch Control**  
Stumpp & Walter Co.  
J. Oliver Johnson, Inc.  
Arthur D. Peterson, Inc.

**Catchbasins, Corrugated Iron**  
Armco Culvert Mfrs. Association

**Cast Iron Pipe**  
McWane Cast Iron Pipe Co.

**Charcoal**  
Cleveland Charcoal Supply Company

**Compost Distributor**  
Toro Mfg. Company

**Compost Mixer**  
Toro Mfg. Company

**Compost Screen**  
Ideal Power Lawn Mower Company

**Drainage Engineers**  
Wendell P. Miller and Associates

**Drainage Gates**  
Armco Culvert Mfrs. Association

## OUTSTANDING ACHIEVEMENTS IN THE PRODUCTION OF FINE TURF

**Buckeye Brand Seaside  
Bent Seed**

Genuine Coos County Strain

**Prince Edward Island  
Bent Seed**

**New Brunswick Creep-  
ing Bent Seed**

**Velvet Bent Seed**

All Government Inspected Sealed  
and Certified

Out booklet,  
"The Fine Bent Grasses,"  
free on request

**The J. M. McCullough's Sons Co.**

316 Walnut Street Cincinnati, O.

## ADVERTISERS' INDEX

Armco Culvert Mfrs. Association	13
Buckner Mfg. Company	14
Budd Mfg. Co.	18
Cleveland Charcoal Supply Company	20
Doty, Henry H.	24
Economy Irrigation Company	19
Fate-Root-Heath Company	16
Henderson, Peter & Company	11
Hubbard Nurseries	22
International Harvester Company of Am.	Cover
Johnson, J. Oliver, Inc.	16
Limestone Products Corp. of America	17
McCullough's, J. M., Sons Company	24
Milwaukee Sewerage Commission	23
National Greenkeeper, Inc.	15
Nelson, L. R., Mfg. Company	17
Nitrate Agencies Company	18
Ohio Humus Products Company	19
Pennsylvania Lawn Mower Works	15
Peterson, Arthur D., Inc.	25
Staude, E. G., Mak-A-Tractor Company	23
Stumpp & Walter Company	13
Synthetic Nitrogen Products Corp.	4
Toro Mfg. Company	Cover
Worthington Mower Company	Cover

**Dump Carts**  
Toro Mfg. Company  
J. Oliver Johnson, Inc.  
Worthington Mower Company  
Peter Henderson & Co.

**Fairway Fertilizers**  
Synthetic Nitrogen Products Corp.

**Fairway Irrigation**  
Buckner Mfg. Co.  
Thompson Mfg. Co.  
Economy Irrigation Company

**Fairway Mower Blades**  
The Budd Mfg. Company

**Fairway Mowers**  
Pennsylvania Lawn Mower Works  
Toro Mfg. Company  
E. G. Staude Mak-A-Tractor Co.  
Ideal Power Lawn Mower Company  
Worthington Mower Company

**Fairway Rollers**  
Toro Mfg. Company

**Fairway Tractors**  
International Harvester Co., of America

**Fertilizers**  
Milwaukee Sewerage Commission  
J. Oliver Johnson, Inc.  
Peter Henderson & Co.  
Nitrate Agencies Co.  
Atkins & Durbrow, Inc.  
Arthur D. Peterson, Inc.

**Fertilizer Distributors**  
International Harvester Co. of America  
Synthetic Nitrogen Products Corp.

**Flag Poles**  
Ideal Power Lawn Mower Company

**Flexible Steel Mats**  
J. Oliver Johnson, Inc.

**Fungicides**  
Bayer-Semesan Company, Inc.  
Sherwin-Williams Company

**Golf Course Construction**  
Ohio Humus Products Co.

**Golf Equipment**  
Stumpp & Walter Co.  
Peter Henderson & Co.  
Arthur D. Peterson, Inc.

**Golf Flags**  
Ideal Power Lawn Mower Co.  
Stumpp & Walter Company  
Peter Henderson & Co.  
Arthur D. Peterson, Inc.

**Golf Cart**  
Ideal Power Lawn Mower Co.

**Greens Fertilizers**  
Synthetic Nitrogen Products Corp.

**Greens Mower Blades**  
The Budd Mfg. Company

**Greens Mowers**  
Ideal Power Lawn Mower Co.

**Greens Sprinklers**  
L. R. Nelson Mfg. Co.  
Buckner Mfg. Co.  
Thompson Mfg. Co.

**Hand Mowers**  
Ideal Power Lawn Mower Co.

**Hole Cutters**  
Ideal Power Lawn Mower Co.

**Horse Drawn Mowers**  
Pennsylvania Lawn Mower Works  
Worthington Mower Company  
International Harvester Co. of America

**Hose**  
Peter Henderson & Co.  
Arthur D. Peterson, Inc.

**Hole Rims**  
Ideal Power Lawn Mower Co.  
Arthur D. Peterson, Inc.

**Humus**  
Hyper-Humus Company  
Ohio Humus Products Co.  
Peter Henderson & Co.  
Atkins & Durbrow, Inc.

**Iron Pipe**  
McWane Cast Iron Pipe Co.

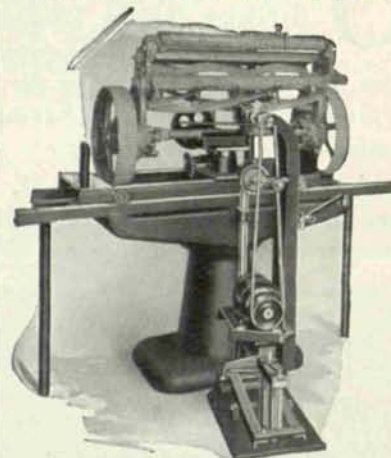
**Lawn Mowers**  
Pennsylvania Lawn Mower Works  
Toro Manufacturing Company  
Worthington Mower Company

**Lime**  
Limestone Products Corporation of America

**Lime Spreaders**  
International Harvester Co. of America

**Mowing Equipment**  
E. G. Staude Mak-a-Tractor Co.  
Toro Mfg. Company  
Pennsylvania Lawn Mower Works  
Ideal Power Lawn Mower Co.  
Worthington Mower Company  
Cooper Mfg. Company  
Arthur D. Peterson, Inc.  
International Harvester Co. of America

## FOR BETTER GREENS Use a Hardinge Mower Sharpener



Sharpens quickly and accurately the  
bed knives and reels of all mowers.

Manufactured by  
**HENRY H. DOTY**  
Glenview, Illinois



## Market Place and Buyers' Guide— *Continued*

**Motor Trucks**  
International Harvester Co. of America.

**Mower Sharpeners**  
Fate-Root-Heath Company  
Toro Manufacturing Company  
Henry H. Doty

**Nitrophoska**  
Synthetic Nitrogen Products Corp.

**Poa Annua**  
J. M. McCullough's Sons Co.

**Power Mowers**  
Cooper Mfg. Company  
Toro Manufacturing Company  
Worthington Mower Company  
International Harvester Co. of America.

**Power Mowers—Roller Type**  
Ideal Power Lawn Mower Co.

**Power Mowers—Wheel Type**  
Ideal Power Lawn Mower Co.  
Worthington Mower Co.

**Putting Green Mowers**  
Toro Mfg. Company  
Pennsylvania Lawn Mower Works  
Worthington Mower Company  
Cooper Mfg. Company

**Power Mower Blades**  
The Budd Mfg. Company

**Rakes**  
Pennsylvania Lawn Mower Works

**Rhode Island Bent Seed**  
A. N. Peckham

**Rollers**  
Stumpp & Walter Company  
Toro Mfg. Company  
Worthington Mower Company

**Rough Mowers**  
Toro Manufacturing Company  
Pennsylvania Lawn Mower Works  
Worthington Mower Company

**Seed**  
Henry A. Dreer  
O. M. Scott & Sons Co.  
J. Oliver Johnson, Inc.  
Stumpp & Walter Co.  
A. N. Peckham  
Peter Henderson & Co.  
J. M. McCullough's Sons Co.  
Illinois Grass Co.  
Arthur D. Peterson, Inc.  
J. G. Peppard Seed Company

**Siphons, Corrugated Iron**  
Armco Culvert Mfrs. Association

**Sod Cutters**  
J. Oliver Johnson, Inc.

**Sprayers**  
Hardie Mfg. Company

**Sprinklers**  
L. R. Nelson Mfg. Company  
Buckner Mfg. Company  
Thompson Mfg. Co.  
Economy Irrigation Company

**Stolons**  
O. M. Scott & Sons Co.  
Hubbard Nurseries

**Storm Sewers, Corrugated Iron**  
Armco Culvert Mfrs. Association

**Street Culverts, Part Circle**  
Armco Culvert Mfrs. Association

**Sulphate of Ammonia**  
Synthetic Nitrogen Products Corp.

**Tee Mowers**  
Toro Manufacturing Company  
Pennsylvania Lawn Mower Works  
Worthington Mower Co.

**Tee Stands**  
Ideal Power Lawn Mower Co.  
Worthington Mower Co.

**Tillage Implements**  
International Harvester Co. of America

**Top Dressing**  
Hyper-Humus Company  
The Ohio Humus Company  
Atkins and Durbrow, Inc.  
Limestone Products Corporation of America

**Tractors**  
E. G. Staude Mak-A-Tractor Co.  
Toro Manufacturing Company  
Worthington Mower Co.  
International Harvester Co. of America

**Urea**  
Synthetic Nitrogen Products Corp.

**Water Pipe**  
McWane Cast Iron Pipe Co.

**Well Casings, Corrugated Iron**  
Armco Culvert Mfrs. Association

**Worm Eradicators**  
Peter Henderson & Co.

## THE NEW "OVERGREEN SCOUT"

Since the wonderful advance was made in the speed at which the fairways of golf courses are mowed, there has naturally arisen a persistent demand for a power driven mower that would improve in like degree, the cutting speed upon putting greens.

Stimulated by this demand many of the leading mower manufacturers have for years been endeavoring to design a machine that would accomplish this desired result. Our greenkeepers are aware of what measure of success has been thus far met by these efforts.

It now appears that the Worthington Mower company, who discovered and patented the gang mower, which brought about the great improvement in the speed of cutting our fairways, has also had this putting green problem in hand. They now make the interesting announcement that their design has finally taken shape in what they call "a perfect machine." They attribute their success largely to the experience gained with hundreds of their 1929 "Overgreens." These have been in actual service for over two years on courses distributed over the Eastern States.

These Overgreens were satisfactory in the main, but in some cases where the turf conditions were exceptional, the high wheel units with which these are equipped, were found not to be as desirable nor as well liked by the greenkeepers as the roller type.

This experience led the company to develop for this year's introduction, a roller type unit, in order that the greenkeepers of the country may have the choice of the high wheel or the roller type "Overgreen" combination.

They claim "that this roller unit, called the "Shawnee Scout," is a wonderful advance over anything heretofore known in this field. That it has incorporated every feature that has been found desirable and eliminated everything that could be unfavorably criticized.

These "Scouts" are associated with the "Overgreen" tractor, in triple gang formation which is the first time that the gang principle has ever been applied to a green.

The tractor itself has a form of pliable tire (the subject of patent application) without which they insist, no power mower can ever be safely run over the soft delicate turf of a modern putting green. It is this tire, more than any other one factor which has enabled them to finally solve this putting green problem.

The three units of the gang have a combined swath of about four feet. They are propelled by the tractor and

in going from green to green are lifted free from the ground so that all wear on the units during the transfer is prevented.

In brief this "Overgreen Scout" is said by this prominent company to be a discovery that is destined to completely change the present accepted method of mowing and bring about the ultimate abandonment of the hand machine altogether, on this service.

An average green of six thousand square feet area is cut by this mower in ten minutes. It leaves no track upon the green—no more than is left by the best hand mowers in use today.

The surface of the green is mowed absolutely smooth, with no ridges, scalps or uncut hollows. No wear of the turf occurs at the edges of the green.

The whole apparatus is simpler, easier to run and less tiresome for the operator, than any other power mower and far speedier. It saves its cost in less than three months. From an economic standpoint alone, no club can afford to be without it.

## New Developments in Golf Fertilization

In recent years there have been several significant changes in golf fertilizer practices. The cycle has swung round from heavily limed greens, to heavily sulphated greens, and now it is swinging back to limed greens. The change so far has seemed to be a sudden jump from one extreme to the other, but caution has warned many that it is better to think carefully before overdosing with either sulphate or lime.

It would seem that any fertilizer which necessitates the application of another material to relieve its harmful after-effects might not be the best for fine grass purposes. Certainly, a balance between lime and sulphate applications can be maintained if enough thought is put into the matter, but are there not other products to do the work—more safely, and easily?

Two comparatively new products have gradually developed worthy reputations

"EVERYTHING FOR THE  
GOLF COURSE"

Write for Catalog

ARTHUR D. PETERSON, INC.

11 E. 44th Street  
New York City, N. Y.



in the golf fertilizing field. Developments of the finest scientific minds in the fertilizer world, they will soon become acknowledged turf fertilizers.

Nitrophoska, one of these is a complete fertilizer containing 15 per cent Nitrogen, 30 per cent Phosphoric Acid and 15 per cent Potash. The nitrogen is in two forms—1/10 nitrate, or quick acting—and 9/10 ammonia, or slow acting. It is practically immediately water soluble, and is uniform in composition because it is solution mixed—that is, it is manufactured by combining liquids, and then driving the liquid off.

Nitrophoska is economical. Where a mixed fertilizer is desirable, it is used on greens mixed with top-dressing materials, or it is applied in solution. It should be applied to greens at the rate of 5 to 10 pounds per 1000 square feet. As the plant-food cost of Nitrophoska is extremely low, complete fertilizer applications to greens now become a minor factor in cost. Nitrophoska is used on fairways, fall and spring, at the rate of 200 pounds per acre.

Urea, the other product, which has long been known as an ideal nitrogen fertilizer for application to greens to improve their color and vigor. Unlike sulphate of ammonia it does not change soil acidity, nor does it leave any residue in the soil. Thus, greenkeepers can develop the proper soil acidity for their greens, and can safely apply Urea without the fear of changing soil conditions. Urea is applied to greens at the rate of one pound per 1000 square feet. Liquid applications are best because results are seen sooner, and distribution is more even.

Both Nitrophoska and Urea leave no harmful after-effects. They are both easy to handle because of lessened weight and bulk.

Greenkeepers might well investigate these products and consider them for use next spring. Complete information can be obtained from Synthetic Nitrogen Producers Corp., 285 Madison Ave., New York City.

### Golf News Here and There

Batavia, Ill.—Fox Valley Country Club has taken title to a golf course south of Batavia.

Cresco, Ia.—The West Union Country Club plans to lease 57 acres now owned by the city for a new golf course.

Duluth, Minn.—Nine holes are cleared, and nine more holes are expected to be cleared before winter on the new municipal golf links at Lester Park.

Beloit, Wis.—The Beloit Golf Links will be enlarged to an 18-hole course to be in operation during the summer.

F. W. Union, Ia.—Work was begun Monday to put into shape the West Union Country Club's new golf course, on the Paige farm.

Ogden, Utah.—A golf building plan is being studied by representatives of the El Monte Springs corporation and City Engineer J. C. Brown.

Wytheville, Va.—The work of laying out the new golf links recently given to the people of Wytheville by a former resident of the town is progressing rapidly.

Newcomerstown, O.—Oxford Country Club, Inc., 250 shares no par value; E. E. Clark, Albert Zimmer, and A. G. Bretzius, John C. Ross, Oxford Bank Bldg., Newcomerstown, Ohio.

Green Bay, Wis.—A new 18-hole Shorewood Golf course will be laid out under the direction of Stanley Pelchar, it was decided at the last meeting of the officers.

Toledo, Ohio.—Construction will soon be started on the new nine-hole municipal golf course in Collins Park, Reubin Retchtel, commissioner of recreation announced.

New York, N. Y.—John Duncan Dunn, Scotch golf professional and architect, has completed a layout for the Muirfield Golf Links to be constructed on the north side of Middle Bay in Nassau County, between Baldwin and Long Beach.

Utica, Ind.—Green Hills Country Club of Utica, no capital stock; objects, establishment and maintenance of a club and recreational grounds for entertainment; incorporators, Louis A. Powell, Eugene Schwab, George F. Bickel, Frank R. Kossa and Harry T. Ferguson.

Boone, Ia.—Tentative plans to add nine holes to the Boone Country club golf course were made at a meeting of the club. The plans depend on the finding of suitable land for the project. A golfing expert will be employed to make a survey of the present course and get offers for the addition of the new holes.

Rushford, Minn.—Rushford is to have a golf course. It is to be located on Trunk highway No. 9, two miles east of town, where the club has bought a fifty acre tract from Herb Hoiseth. George H. Julsrus is president; L. R. Kierland, John M. Miller, vice presidents; Edgar Eggen, secretary; Elvin Humble, treasurer. L. R. Kierland is superintendent of the course committee.

### CLASSIFIED ADVERTISEMENTS

GREENKEEPER—*With fifteen years' experience as greensman, assistant greenkeeper, golf construction, maintenance, water and machinery. Good references. Will take a position as greenkeeper or assistant, in the United States or Canada. Write Box B, c/o The National Greenkeeper, Cleveland, O.*

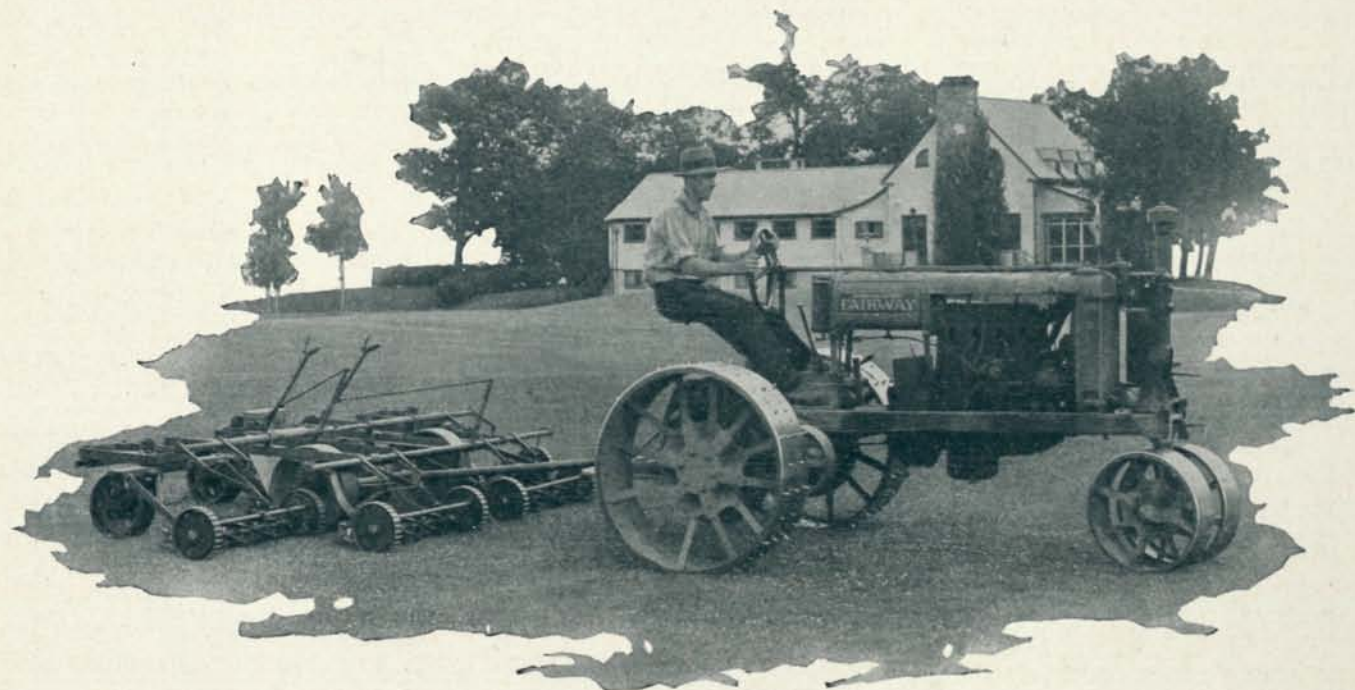
GREENKEEPER—*With ten years' experience. Also capable man handling remodeling work. Have established organization on new courses. College training. Best references. Age 35, married. Open for permanent position beginning next season. Write Box C, c/o The National Greenkeeper, Cleveland, Ohio.*

GREENKEEPER WANTED—*Prominent golf club in Georgia wants a greenkeeper to fill an opening April 1. Man must be familiar with Bermuda grass. Only members of the N. A. G. A. need apply. Write Box D, c/o The National Greenkeeper, Cleveland, O.*

GREENKEEPER—*With ten years' experience open for position. Also good golf instructor. Member of the National Greenkeepers' Association. Four years at last position. 30 years of age, married. Best of references. Write Box E, c/o The National Greenkeeper, Cleveland, Ohio.*



# A Sound Investment in POWER



*Fairway Tractor mowing fairways at the Coquillard Country Club, South Bend, Ind.*

**T**HE McCormick-Deering FAIRWAY Tractor is a sound, practical investment in power for the special needs of golf courses, country clubs, estates, parks, and airports. It ably handles maintenance and construction work, applying its abundant power at drawbar, belt, and power take-off. It works as well on hills and rolling ground as on level stretches.

The FAIRWAY is simple and compact in construction, and built strong to give years of service. All working parts are easily accessible for ready inspection and adjustment. It is economical on fuel consumption and upkeep.

Service is always available through an organization of 115 Company-owned branches and 56 distributors in the United States and Canada, and thousands of McCormick-Deering dealers. We invite you to investigate fully the FAIRWAY Tractor and ask for a demonstration. Write us for information.

INTERNATIONAL HARVESTER COMPANY  
606 So. Michigan Avenue OF AMERICA  
(Incorporated) Chicago, Illinois

## **These Features Make the FAIRWAY the Outstanding Golf Tractor**

It is easily handled.

It makes an 8-foot radius square turn.

It delivers its power three ways: through drawbar, belt, and power take-off.

It is a roller in itself: wheels do not track, the weight being distributed to all 4 wheels.

It will operate a special built-in 7-foot rough mower.

It cuts from 75 to 100 acres a day with gang mower.

It pulls wagons, compost distributors, rollers, etc.

It operates pumps and other belt-driven equipment.

It has plenty of power for plowing, disking, and seeding.

It moves dirt, materials, and equipment for construction work.

It operates efficiently on the toughest hills.

**The Golf  
Tractor**

**MCCORMICK-DEERING  
FAIRWAY**