

IN THIS ISSUE—Golf Course Construction from the Greenkeeper's Standpoint

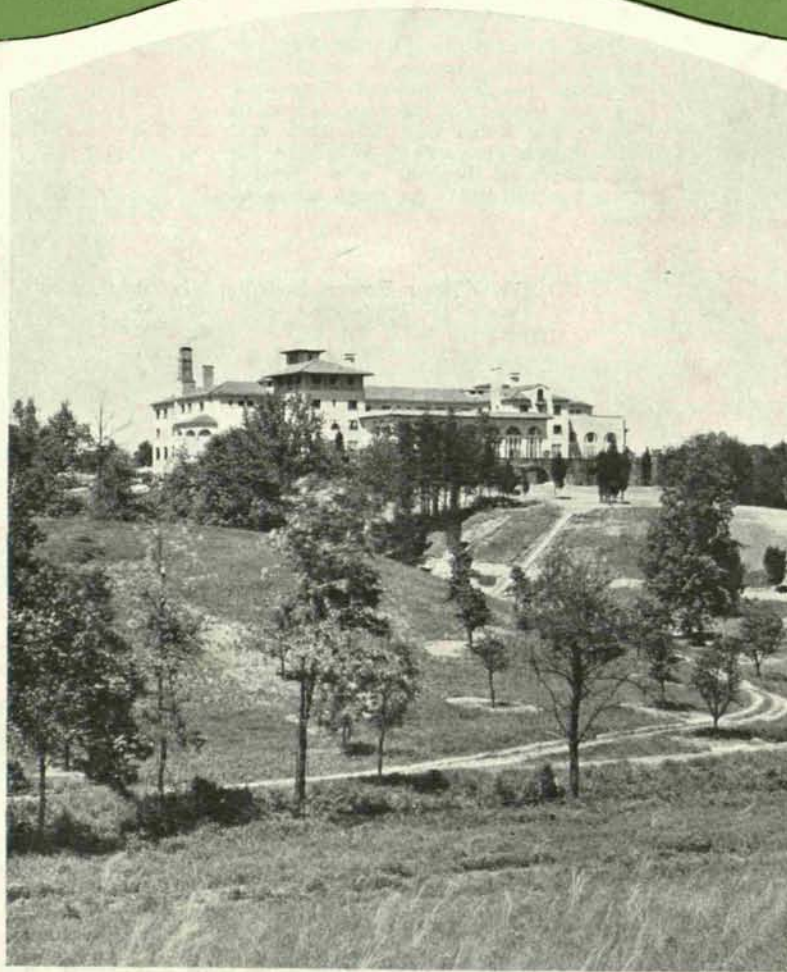
By Edward B. Dearie, Jr.

# *The* NATIONAL GREENKEEPER

*The Leading Journal of the World on Turf Culture and Golf Course Maintenance*

APRIL  
1930

25  
CENTS



CONGRESSIONAL COUNTRY CLUB, WASHINGTON, D. C.

*This magnificent club is located in Montgomery County, Md., about ten miles from the Capitol. The terrain is rugged and beautiful*

Photo by LEET BROTHERS

*Official Organ of*  
THE NATIONAL ASSOCIATION OF GREENKEEPERS OF AMERICA