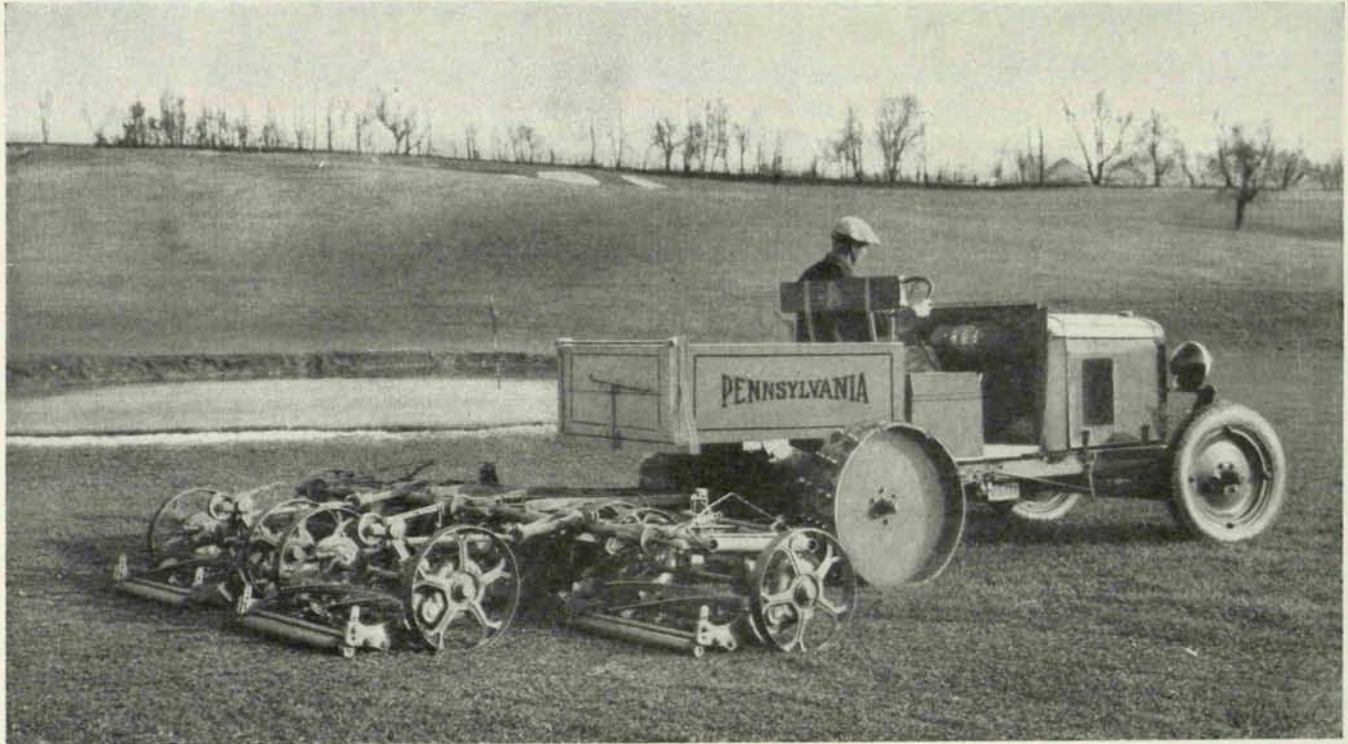

AT LAST!



A real greenkeepers' tractor—the new PENNSYLVANIA

WHAT greenkeepers have been waiting for—not only for fairway mowing, but for general work on the course. Uses latest Chevrolet light truck model and is the first six-cylinder golf tractor.

It takes the hills in great shape and without drawing on its big reserve of power. Remarkably smooth in operation and control and *there is no engine vibration at any speed*. Maximum speed, 20 miles an hour in high. Equipped with electric lights, self-starter and other standard Chevrolet equipment.

Write for details and for catalog describing the tractor-pulled "New" Fairway Quint or Trio, the Super Roller and New Aristocrat greens mowers and all the other PENNSYLVANIA golf mowers.

PENNSYLVANIA LAWN MOWER WORKS

1645 North 23rd Street

Philadelphia, Penna.
