

TORO Distributors are Reliable



J. T. Clapper
Pacific Toro Co.
Los Angeles, Calif.

Right in step with the alert, progressive spirit in Los Angeles and the surrounding country is J. T. Clapper and the Pacific Toro Co.

With a well organized service station and a capable crew of mechanics, the Pacific Toro Co. is giving the kind of service to owners of Toro Golf Course Equipment that is highly valued, especially as the Toro factory is so far away from Los Angeles.

Tom Clapper, as he is known to many golf course superintendents and managers of estates throughout Southern California, knows his machinery. He had considerable experience with machinery before becoming identified with the Toro organization. He is thoroughly familiar with the construction and operation of every piece of Toro equipment.

This knowledge has helped him to organize and train his very efficient service department and to show his customers how to get the most dependable and economical service out of Toro equipment.

He is another reason why we say—

Toro Distributors are Reliable Distributors

TORO Manufacturing Company

3042-3160 Snelling Avenue

Minneapolis, Minnesota

TORO GOLF COURSE EQUIPMENT

The NATIONAL GREENKEEPER

Official Organ of The National Association of Greenkeepers of America

Published monthly at 405 Caxton Building, Cleveland, Ohio.

Contents copyright, 1928, by The National Greenkeeper, Inc., Publishers.

Robert E. Power, President and Editor; Frank H. Pelton, Sec'y.; C. F. Lowe, Treas.; M. J. Fox, Asst.-Sec'y.

Entered as second-class matter, Aug. 25, 1928, at the post office, Cleveland, Ohio, under act of March 3, 1879

All Rights Reserved—None of the contents of this Magazine, either wholly or in part, may be reprinted without permission.

VOLUME III.

No. X

Contents

PEBBLE BEACH A well-groomed golf course By Robert E. Power	5	OBITUARY: JOHN McNAMARA	29
PEBBLE BEACH—Hole by Hole	7	CANADIAN GOSSIP By J. H. Evans	30
STAGE SET FOR LOUISVILLE SHOW	25	ECHOES FROM POMONOK By Elmer F. Affeldt	30
AN EDUCATIONAL VISIT TO MID-LOTHIAN By John MacGregor	27	AROUND THE OFFICE DESK	31
		MARKET PLACE AND BUYERS' GUIDE	33

Officers—National Ass'n of Greenkeepers of America

John Morley, *President*
Youngstown Country Club
2248 Selma Avenue
Youngstown, Ohio

John Quail, *Secretary*
Highland Country Club
426 Highland Avenue
West View, Pittsburgh, Penna.

John MacGregor, *First Vice Pres.*
Chicago Golf Club
Box 717, Wheaton, Ill.

Emil Loeffler, *Treasurer*
Oakmont Country Club
Oakmont, Penna.

Lewis M. Evans, *Second Vice Pres.*
Cedarbrook Country Club
Mt. Airy, Philadelphia, Penna.
William J. Sansom, *Third Vice Pres.*, Toronto Golf Club,
Long Branch, Ontario, Can.
George Davies, *Fourth Vice Pres.*
Big Spring Golf Club
Louisville, Kentucky

DISTRICT VICE PRESIDENTS

H. HAWKINS, Lakeview Golf Club,
Port Credit, Ontario
JOSEPH VALENTINE Merion Cricket
Club, Philadelphia, Penna.
CHARLES ERICKSON, Minekahda
Club, Minneapolis, Minn.
CHESTER MENDENHALL, Sim Park
Golf Club, Wichita, Kansas
JAMES MUIRHEAD, Ridgewood Golf
Club, Cincinnati, Ohio
GEORGE SARGENT, Scioto Country
Club, Columbus, Ohio
FRED A. BURKHARDT, Westwood
Country Club, Cleveland, Ohio
CAPT. DAVID L. REES, Progress
Country Club, Purchase, New York
GEORGE WELLIN, Tumblebrook
Country Club, New Britain, Conn.
J. O. CAMPBELL, Wethersfield Coun-
try Club, Hartford, Conn.
JOE P. MAYO, Pebble Beach Coun-
try Club, Pebble Beach, Calif.
ROBERT HENDERSON, Country
Club of Buffalo, Williamsville, N. Y.
HUGH C. MOORE, St. Simon's Is-
land Golf Club, St. Simons Island, Ga.
FORD GOODRICH, Flint Country
Club, Flint, Michigan.
ELMER F. AFFELDT, Glenn Oak
Golf & Country Club, Great Neck,
L. I., New York.

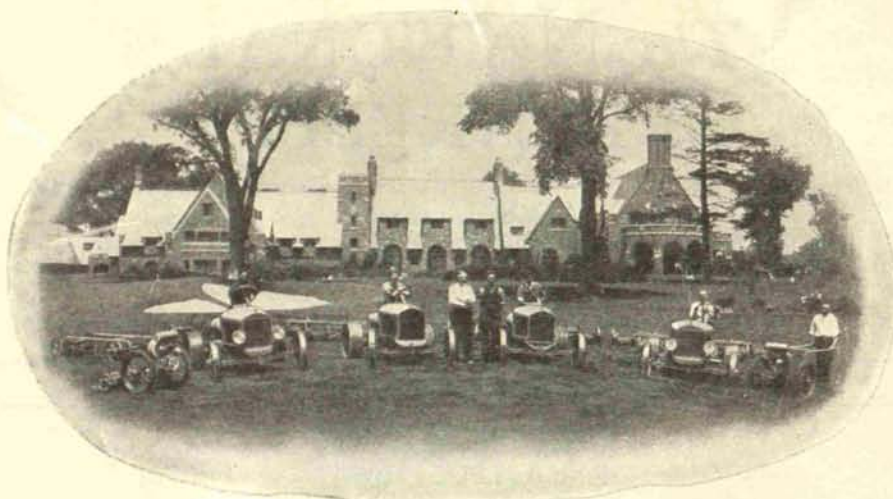
J. E. ARMSTRONG, Tippecanoe Coun-
try Club, Leesburg, Indiana
A. E. ARNOLD, Masonic Country
Club, Grand Rapids, Mich.
JOHN ANDERSON, Crestmont Coun-
try Club, W. Orange, N. J.
C. G. BARTON, Sylvania Golf Club,
Toledo, Ohio
C. BASHAM, River Crest Country
Club, Fort Worth, Texas
ELMER F. BIGGS, Country Club of
Peoria, Peoria, Ill.
JAMES BOLTON, Berkshire Country
Club, Reading, Penna.
W. A. BOSTIC, Biltmore Forest Coun-
try Club, Biltmore, N. C.
CARL A. BRETZLAFF, Meridian
Hills Country Club, Indianapolis, Ind.
CARL DAVIS, Moonbrook Country
Club, Jamestown, New York
THOS. F. FAHEY, Winchester Coun-
try Club, Winchester, Mass.
THOMAS J. GALVIN, Rhode Island
Country Club, West Barrington,
Rhode Island
E. E. DAVIS, Meadville Country Club,
Meadville, Penna.
THOS. E. DOUGHERTY, Spring-
haven Country Club, Chester, Penna.
JOHN E. DUSTIN, Kalamazoo Coun-
try Club, Kalamazoo, Mich.

J. H. ELLIFF, Winged Foot Golf
Club, Mamaroneck, New York
JOHN GRAY, Essex Golf and Country
Club, Sandwich, Ontario
W. GREGG, Rock Creek Park Country
Club, Washington, D. C.
JOSEPH F. HINES, Orchard Ridge
Country Club, Fort Wayne, Ind.
JOHN G. JONES, Onondaga Golf and
Country Club, Syracuse, New York
ALBERT KEMP, Westwood Golf
Course, Richmond, Va.
HUGH LUKE, Garden City Country
Club, Garden City, N. Y.
WILLIAM MAYNE, Jasper Park
Lodge, Alberta, Canada
T. H. RIGGS MILLER, Richmond
Country Club, Staten Island, N. Y.
JOSEPH O'GRADY, New Bedford
Country Club, New Bedford, Mass.
H. E. SHAVE, Oakland Hills Country
Club, Birmingham, Mich.
CARL E. TREST, Woodland Golf Club,
Auburndale, Mass.
JACK WELCH, Wakonda Country
Club, Des Moines, Iowa
WALTER C. REED, Westwood Coun-
try Club, St. Louis, Mo.
ALEX. BINNIE, Shoreacres Golf
Club, Lake Bluff, Ill.

Official communication, membership dues, employment, etc., should be mailed direct to the Secretary. Editorial articles, photos, subscriptions and golf show requests mail to 405 Caxton Bldg., Cleveland, O.

WORTHINGTON MOWER COMPANY

Lawn Tractors
Lawn Mowers
Power and
Hand Putting
Green Mowers



Rollers
Tee Stands
Tee Markers
Ball Locators

Illustrating the Worthington Lawn tractors, mowers and power green mowers at Winged Foot Golf Club where the National Open Golf Championship was recently held.

It is significant that Worthington Gang Mowers are used on more golf courses in the world than all other makes combined

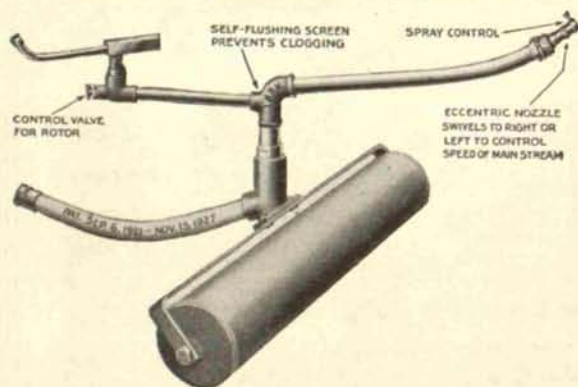
Main Office and Factory — Stroudsburg, Pennsylvania

Branches: Chicago office and Warehouse, 517-21 South Laflin Street; Montreal, 132 St. Peter Street; Cleveland, Hippodrome Building; New York, 11 E. 44th St. San Francisco, 52 Beale St., Boston, 1 State Street

Agencies in all Principal Cities

THE "LARK"

Sprinkles Evenly from center to outside circumference on Any pressure.



The "Lark" Sprinkles Evenly

125 ft. on 50 lbs. pressure—90 ft. on 35 lbs. pressure
100 ft. on 40 lbs. pressure—80 ft. on 25 lbs. pressure
60 ft. on 15 lbs. pressure.

Pressure Readings at the Sprinkler

The New Rotor Control Valve controls the speed of the Rotor and the quality of its spray under varying pressures. It eliminates those smoky sprays that are often lost in the breeze. It prevents excessive wear of the Rotor bearing.

The Self-Flushing Screen keeps all sediment away from the Rotor, preventing any clogging. All sediment passes out through the larger Main Stream Nozzle.

L. R. NELSON MFG. CO., PEORIA, ILL.

GODWIN

Washington Strain
Creeping Bent
Stolons and Sod

*Our plantings have always been
satisfactory*

HIRAM F. GODWIN

—BENT GRASS—

Box A, Redford Station
DETROIT, MICH.

Eastern Nursery:
Box 51
Wayne, Penna.

Canada:
116 Prince Rd.
Sandwich, Ont.

October
1929
Volume III
Number 10

The NATIONAL GREENKEEPER

The Leading Journal of the World on Turf Culture and Golf Course Maintenance

Official Organ of The
National Association
of Greenkeepers of
America

Pebble Beach

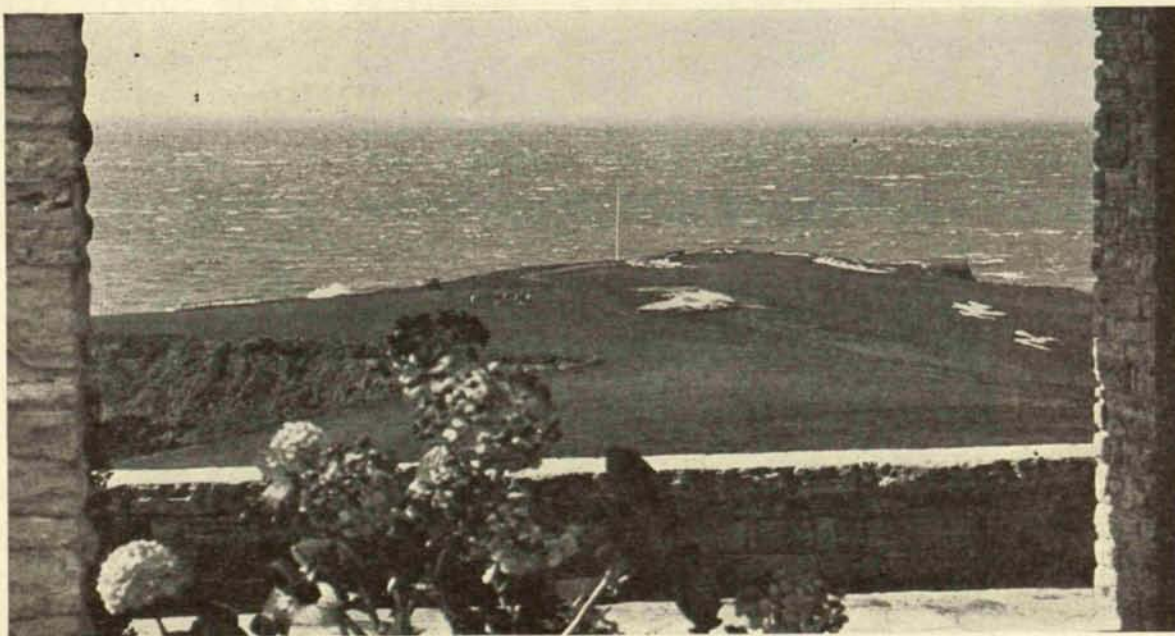
A well-groomed golf course

BY ROBERT E. POWER

Editor, The National Greenkeeper

"ONE of the best groomed golf courses I have ever seen," said Bobby Jones after he had seen and played Pebble Beach. And Bobby said this after and not before he was beaten in the first match round by Johnnie Goodman of Omaha. If anyone knows a good golf course Bobby Jones does. He has played the best in America and Great Britain and is particularly well qualified to praise or criticize and can be trusted to do so with true honesty of purpose.

Through the courtesy of the Program committee of the National Amateur Championship, we are permitted to reproduce here the detailed drawings of all of the holes of this now famous course on the Monterey Peninsula at Del Monte, California. Last year when the United States Golf Association chose Pebble Beach for its Amateur Championship the club called in H. Chandler Egan, former national amateur champion and a close student of golf course architecture, and he with Joe Mayo the greenkeeper started in to make Pebble Beach a tough, but fair test of golf. I think the results testify to their ability and I think further that Joe Mayo should be given great credit for having the course in such wonderful condition.



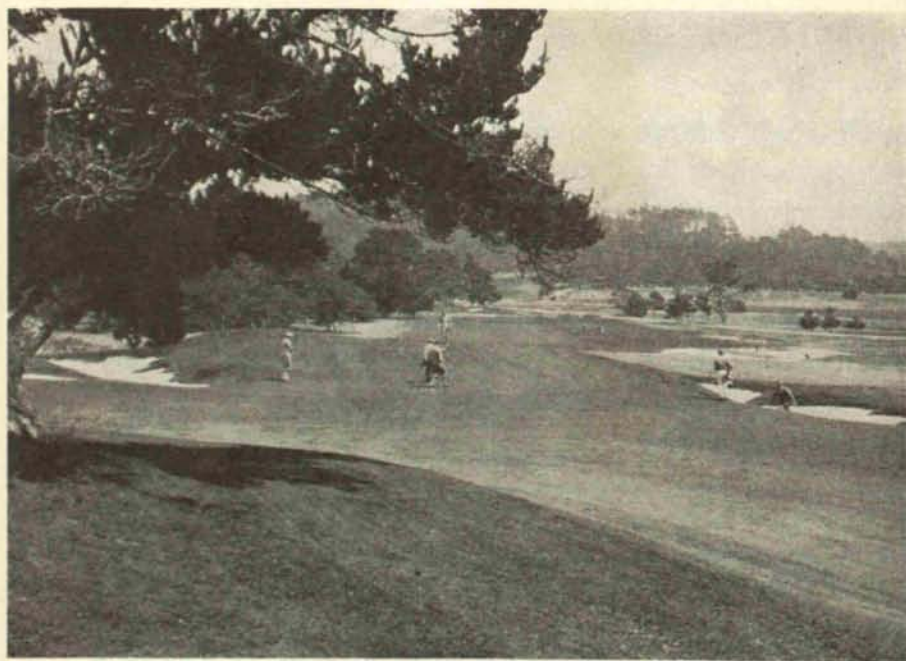
THE SIXTH GREEN AT PEBBLE BEACH

In the distance is the storm-tossed Pacific Ocean, said to be the largest water hazard in the world

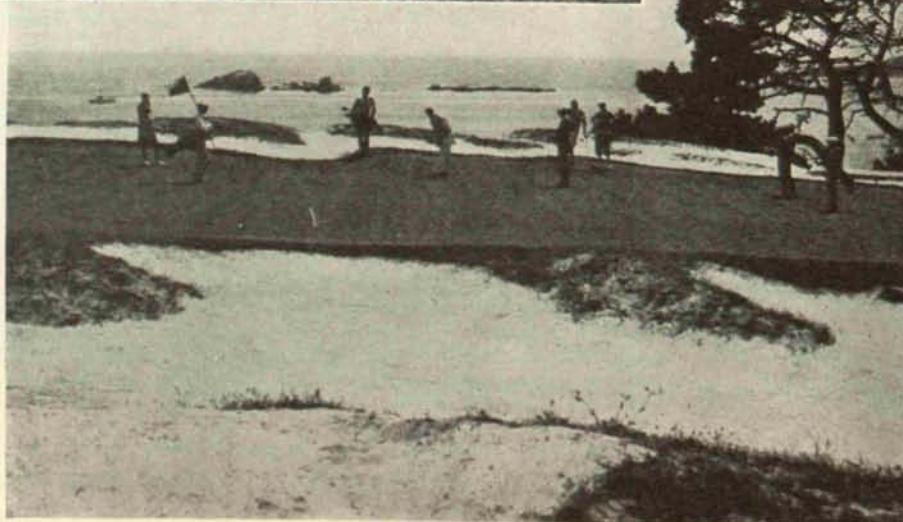
One thing in favor of Pebble Beach is the fact that they have an extensive watering system, which includes fairways, tees, and greens and this of course makes for fine turf when coupled with intelligent care and supervision. There were no bad fairway lies and no excuse for poor putting on the closely cropped cocoos bent greens. But there was plenty of excuse for being in trouble because Pebble Beach probably has more artificial and natural hazards than any course in America, excepting perhaps Pine Valley.

On many holes the Pacific Ocean almost laps the fairways and greens, offering a real menace to the player who slices or hooks. Then again the wind hazard is tremendous and proved the downfall of many on the second day of the qualifying round. Another unique feature is the location and the contour of the bunkers which are different from those on eastern courses, being fairly shallow but biting close into the putting surface of the greens. They require a delicate shot to get out successfully.

So we leave the study of Pebble Beach to our readers trusting they may profit thereby when they have construction work to do at home.



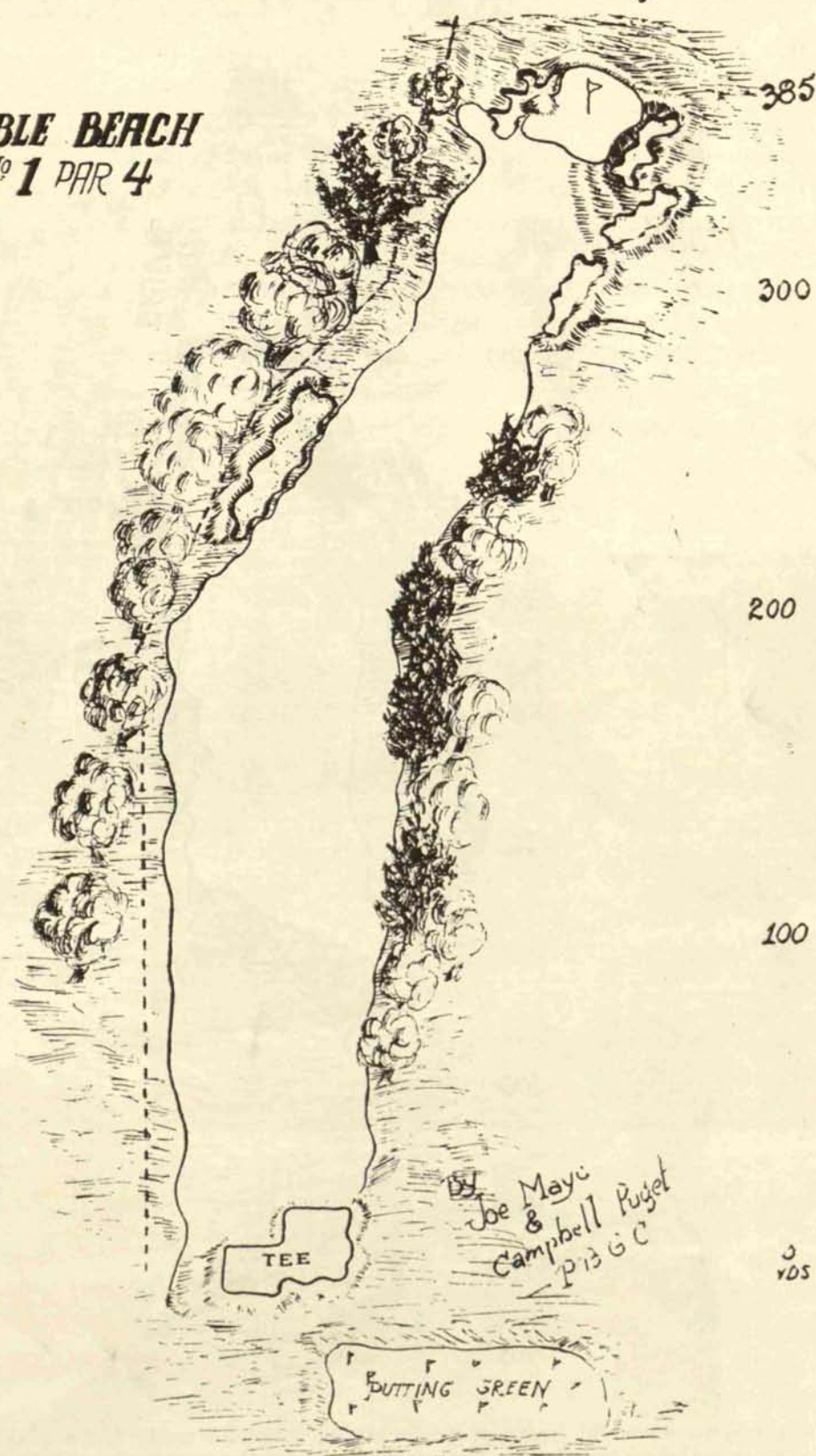
ABOVE IS A VIEW
OF THE FIRST
GREEN AT PEBBLE
BEACH. BELOW IS
THE FOURTH GREEN
A 325 YARD DRIVE
AND PITCH HOLE



JOE MAYO
Pebble Beach greenkeeper

Pebble Beach—Hole By Hole

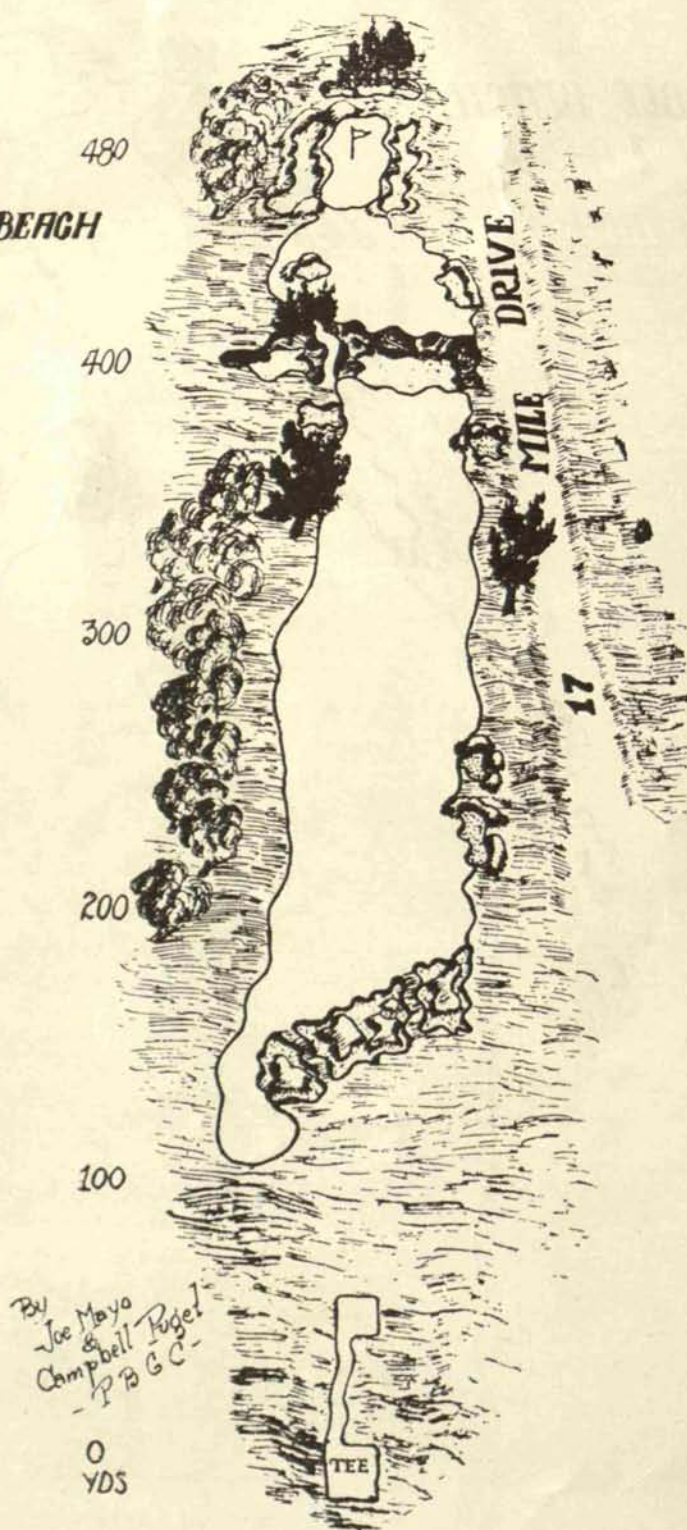
PEBBLE BEACH
No 1 PAR 4



Exacting tee shot. If considerable length is desired it almost calls for a fade to pass point of dog's leg on right and avoid out of bounds and trap on left. A long tee shot properly placed leaves a good mashie shot or more to a closely guarded green. Trapping is severe and green hard to hit. Hole plays considerably longer than its yardage, due to a gradual rise from tee to green.

Pebble Beach—Hole By Hole

PEBBLE BEACH
No 2 HOLE 5



Two powerful shots properly placed must be made for a player to get his theoretical four. Diagonal traps for the carry are apt to catch one's tee shot unless it has a long and high carry. The second shot must also be of the same type and unusually straight if the green is to be gained. Traps and trees on the left, with an abundance of natural hazards provide plenty of trouble.

Pebble Beach—Hole By Hole

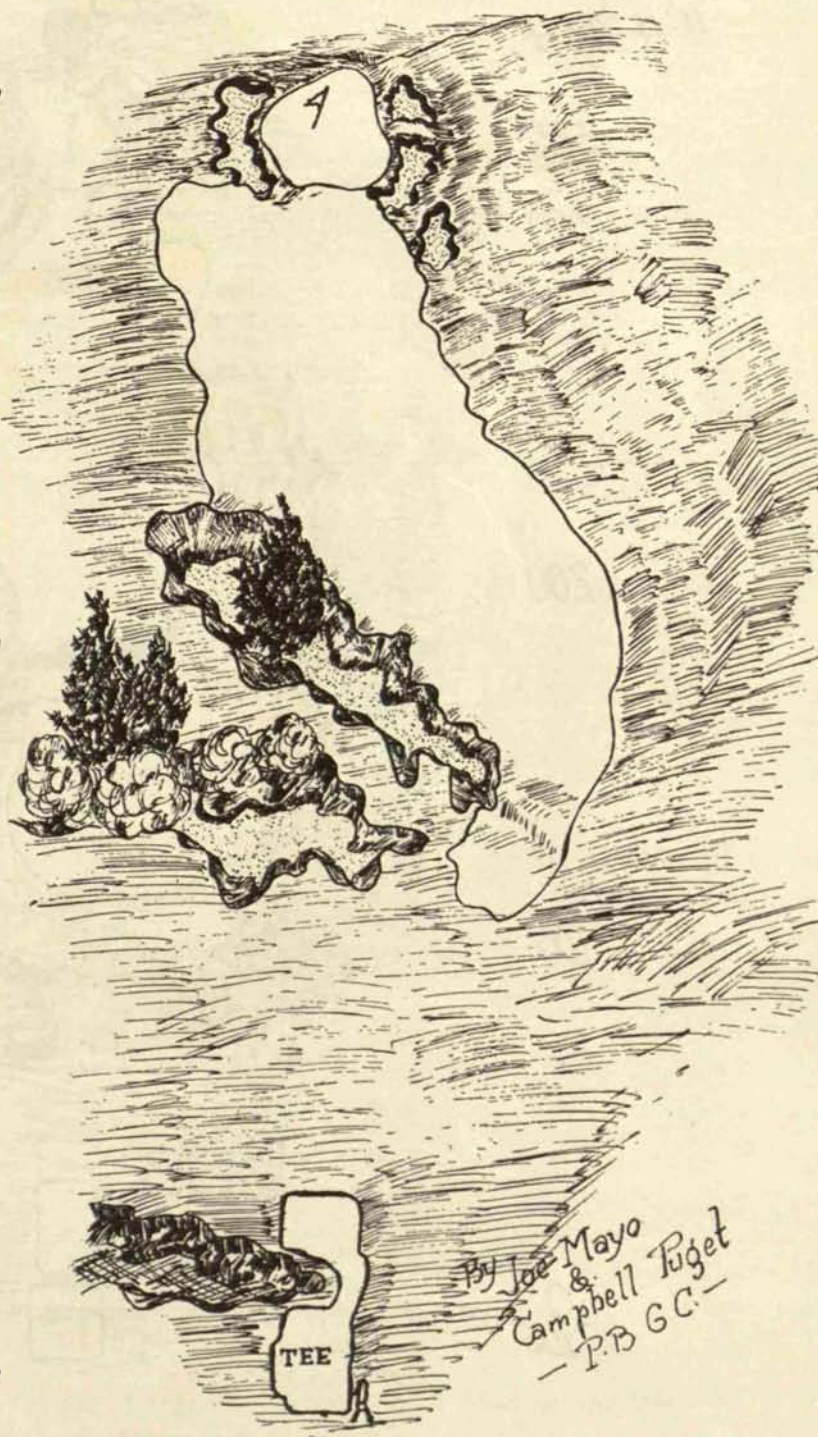
PEBBLE BEACH
No 3 PAR 4

355

300

200

100

0
Yds

A great natural carry of 235 yards over series of diagonal sandy bar-rancas. The more to the right one plays, the more difficult becomes the second shot, as the trapping to right of green is dangerous. A perfectly played tee shot here leaves a comparatively easy second shot to the green.

Pebble Beach—Hole By Hole

PEBBLE BEACH

No 4 PAR 4

325

300

200

100

Yds By Joe Mayo
& Campbell Puget
— P.B.G.C. —

TEE

HARBOR

YACHT

Here the player becomes acquainted with the Pacific Ocean. A 200 yard carry over barrancas, with an alternate route to the left. Second shot is only a short pitch but to a proportionately small green. Here it is easy to push a tee shot over cliffs to the beach on the right, or if a player hooks to bad lands on left his second shot becomes a most dangerous one.