



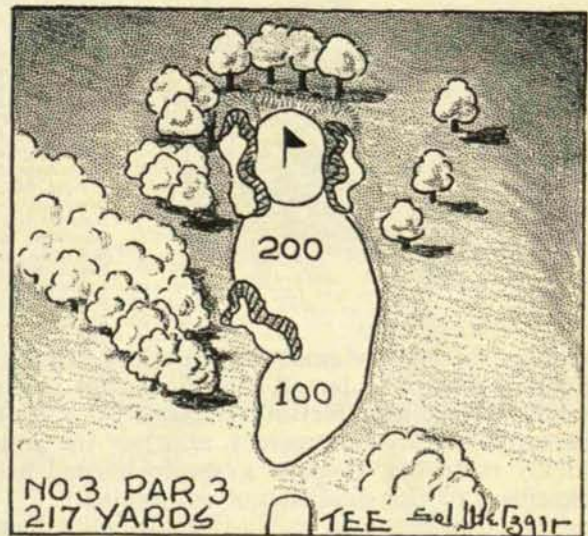
Par 3

No. 3

217 Yards

A SPOON or 2 iron should find this green. The slight swale in front is deceptive and has a tendency to foreshorten the distance. Traps to the right and left, and for the top shot make essential a straight drive. A sliced drive finds a tall tree in direct stymie position.

(Continued on page 24)



OFFICIAL SCORE CARD
WINGED FOOT GOLF CLUB

WEST COURSE																					
Holes	1	2	3	4	5	6	7	8	9	Out	10	11	12	13	14	15	16	17	18	In	Total
Yards	445	376	217	406	517	323	170	439	517	3410	190	378	497	213	376	397	456	450	419	3376	6786
Par	4	4	3	4	5	4	3	4	5	36	3	4	5	3	4	4	5	4	4	36	72

These Famous Green Brown Patch with



Fourth green, Lake Shore Country Club, Glencoe, Ill., kept free of brown patch with Du Bay fungicides.



Semesan is the original brown patch fungicide. It gives effective control under all conditions, but is especially recommended where turf fertility is good. . . . Nu-Green contains the same effective ingredient, and has the added property of quickly restoring diseased grass to normal health and color, regardless of the condition of soil fertility. . . . For control, one pound of Semesan or Nu-Green to 50 gallons of water will treat 1,000 square feet of turf by the sprinkling method. When a power sprayer is used, 50 gallons of Semesan solution is sufficient for 2,000 to 3,000 square feet of turf, and 50 gallons of Nu-Green solution for 1,500 to 2,000 square feet. Directions with package. . . . Buy now from your Seedsman or Golf Supply House.

The 389 clubs list
In hot weather,

- A. D. Laskey Golf Club.....Everitt
- Harlem Golf Club.....Forest Park
- Freeport Club.....Freeport
- Lake Shore Golf Club.....Glencoe
- Elmgate Country Club.....Glenview
- North Shore Golf Club.....Glenview
- Glenview Country Club.....P. O. Golf
- Glenwoodie Country Club.....Glenwood
- Highland Park, E. Park
DistrictHighland Park
- Northmoor Country Club.....Highland Park
- Maywood Golf Club.....Hillside
- Butterfield Country Club.....Hinsdale
- Hinsdale Golf Club.....Hinsdale
- Ruth Lake Country Club.....Hinsdale
- York Country Club.....Hinsdale
- Flossmoor Country Club.....Homewood
- Itasca Country Club.....Itasca
- Medinah Country Club.....Itasca
- Municipal Golf Club.....Jacksonville
- Kankakee Country Club.....Kankakee
- La Grange Country Club.....La Grange
- York Country Club.....La Grange
- Kildeer Country Club.....Lake Grove
- Deer Park Country Club.....La Salle
- Cross Roads Country Club.....Lawrence
- Pistakee Golf Club.....McHenry
- Olympia Fields Country Club.....Matteson
- Westwood House Golf Club.....Melrose Park
- Mendota Golf Club.....Mendota
- Minne-Monessie Golf Club.....Mokence
- Rob Roy Country Club.....Mt. Prospect
- Ridgemoor Country Club.....Norwood Park
- Harlem Golf Club.....Oak Park
- Oak Park Country Club.....Oak Park
- Glencoe Country Club.....Palos Park
- Oak Hills Golf Course.....Palos Park
- Park Ridge Country Club.....Park Ridge
- Pekin Country Club.....Pekin
- Mt. Hawley Country Club.....Peoria
- Country Club of Peoria.....Peoria
- Northmoor Country Club.....Ravinia
- Riverside Golf Club.....Riverside
- Bryn Mawr Country Club.....Teesville
- Butterfield Country Club.....Villa Park
- Chicago Golf Club.....Wheaton
- Columbia Country Club.....Wheeling

- CALIFORNIA**
- Hollywood Country Club.....Hollywood
 - Fox Hills Country Club.....Los Angeles
 - Griffith Park Municipal Golf
LinksLos Angeles
 - Rancho Golf Club.....Los Angeles
 - Montebello Park Golf
ClubMontebello Park
 - Riveria Country Club.....Santa Monica
 - Santa Monica Municipal
Golf ClubSanta Monica
- CONNECTICUT**
- Brooklawn Country Club.....Bridgeport
 - Round Hill Country Club.....Greenwich
 - Southington Country Club.....Southington
- DELAWARE**
- Du Pont Country Club.....Wilmington
- DISTRICT OF COLUMBIA**
- Columbia Country Club.....Washington
- ILLINOIS**
- Elmhurst Golf Club.....Addison
 - Oakview Country Club.....Aledo
 - Channel Lake Country Club.....Antioch
 - Bartlett Hills Country Club.....Bartlett
 - Bel Mar Country Club.....Belvidere
 - Twin Orchard Country Club.....Bensonville
 - Lakeside Country Club.....Bloomington
 - Meadow Woods Golf Club.....Centralia
 - Champaign Country Club.....Champaign
 - Beverly Country Club.....Chicago
 - Coghill Country Club.....Chicago
 - Edgewater Golf Club.....Chicago
 - Evergreen Golf Club.....Chicago
 - Oak Park Country Club.....Chicago
 - Ridge Country Club.....Chicago
 - River Forest Country Club.....Chicago
 - University Country Club.....Chicago
 - Crystal Lake Country Club.....Crystal Lake
 - Roselawn Golf Club.....Danville
 - Nelson Park.....Decatur
 - Sunnyside Golf Club.....Decatur
 - Briergate Golf Club.....Deerfield
 - Venon Ridge Country Club.....Deerfield
 - Kishwaukee Country Club.....De Kalb
 - Dwight Country Club.....Dwight
 - Evanston Golf Club.....Evanston

SEMESAN	NU-GREEN
5-lbs. .. \$ 13.00	5-lbs. .. \$ 9.00
25-lbs. .. 56.25	25-lbs. .. 37.50
100-lbs. .. 220.00	100-lbs. .. 145.00
300-lbs. .. 645.00	300-lbs. .. 420.00

SEMESAN

BAYER-SEMESAN CO., INC., 105 Hudson St., New York
The Bayer Co., Inc., and E. I.

Greens are kept free of Du Bay Fungicides

As listed below, and others, use Du Bay Semesan or Nu-Green, or both, to prevent turf damage. The destructive brown patch does its worst. Unless controlled, it often ruins costly greens overnight.

KANSAS	Kansas City Country Club... Kansas City	Garden City Country Club... Garden City, L. I.	Cincinnati Country Club... Cincinnati
Club... Topeka	Lakewood Golf & Country Club... Kansas City	Old Westbury Golf Club... Garden City, L. I.	Cloverbrook Country Club... Cincinnati
Club... Topeka	Meadow Lake Country Club... Kansas City	Piping Rock Club... Glen Cove, L. I.	Ridgewood Golf Club... Cincinnati
Club... Topeka	Milburn Country Club... Kansas City	Women's Nat. Golf & Tennis Club... Glen Head, L. I.	Ryland Lakes Country Club... Cincinnati
Club... Wichita	Mission Hills Country Club... Kansas City	North Shore Golf Club... Glenwood, L. I.	Three Rivers Golf Club... Cincinnati
Club... Wichita	Oakwood Club... Kansas City	Governor's Island Golf Club... Governor's Island	Pickaway Club... Circleville
KENTUCKY	Osage Country Club... Kirkwood	Deepdale Golf & Country Club... Great Neck, L. I.	Brookside Golf & Country Club... Columbus
Club... Anchorage	Woodlawn Country Club... Merriam	Glen Oak Golf Club... Great Neck, L. I.	Columbus Country Club... Columbus
Country Club... Bowling Green	Indian Hills Country Club... Merriam	Lakeville Golf & Country Club... Great Neck, L. I.	Dublin Road Golf Course... Columbus
Club... Middlesboro	Bellerive Country Club... Normandy	Links Golf Club... Great Neck, L. I.	Elks Golf Club... Columbus
Club... Richmond	Glen Echo Country Club... Normandy	Sound View Golf Club... Great Neck, L. I.	Indian Springs Golf Club... Columbus
MAINE	North Hills Country Club... Normandy	Timber Point Club... Great Neck, L. I.	Scioto Country Club... Columbus
Club... Dixfield	Midland Valley Country Club... Overland	Bonnie Briar Country Club... Harrison	Winding Hollow Country Club... Columbus
Club... Kennebunk Beach	St. Joseph Country Club... St. Joseph	Broadmoor Country Club... Harrison	York Temple Country Club... Columbus
MARYLAND	Riverview Club of St. Louis... St. Louis	Green Meadow Country Club... Harrison	Shawnee Country Club... Criderville
Country Club... Cumberland	Westwood Club... St. Louis	Quaker Ridge Golf Club... Harrison	Dayton Country Club... Dayton
Golf Club... Edgewood Arsenal	Sunset Hill Country Club... Sappington	Wing Foot Golf Club... Harrison	Macgregor Golf Club... Dayton
Golf Club... Rogers Forge	Algonquin Golf Club... Webster Groves	Scarsdale Golf Club... Hartsdale	Odevenne Country Club... Delaware
MASSACHUSETTS	Normandy Country Club... Wellston, St. Louis	Garden City Country Club... Hempstead, L. I.	Hamilton Municipal Golf Course... Hamilton
Country Club... Ashfield	NEBRASKA	Huntington Valley Club... Huntington	Lossantville Country Club... Pleasant Ridge
Country Club... Fall River	Country Club of Lincoln... Lincoln	Queens Valley Golf Club... Kew Gardens, L. I.	Portsmouth Country Club... Portsmouth
Country Club... Leicester	Omaha Country Club... Omaha	Laurelton Country Club... Laurelton	Country Club... Ridgewood
Country Club... Lexington	The Omaha Field Club... Omaha	Lawrence Golf Club... Lawrence	Belmont Hills Country Club... St. Clairsville
Country Club... No Scituate	Happy Hollow Club... Omaha	Glen Oak Country Club... Little Neck, L. I.	Springfield Community Golf Club... Springfield
Country Club... Osterville	Lakewood Golf Club... Ralston	Sound View Golf Club... Little Neck, L. I.	Urbana Country Club... Urbana
Country Club... Petersham	NEW HAMPSHIRE	The Creek Club... Locust Valley	Willow Bend Country Club... Van Wert
Country Club... Springfield	Forest Hills Hotel... Francenia	Lido Country Club... Long Beach, L. I.	Trumbull Country Club... Warren
Country Club... West Brighton	Mojalki Country Club... Franklin	Wolferts Roost Country Club... Loudonville	Willowick Country Club... Wickliffe
MICHIGAN	Androscoggin Valley Country Club... Gorham	Winged Foot Golf Club... Mamaroneck, L. I.	Mahoning Country Club... Youngstown
Country Club... Adrian	Manchester Country Club... Manchester	The Links Country Club... Manhasset	Poland Country Club... Youngstown
Country Club... Albion	Portsmouth Country Club... Portsmouth	Intercollegiate Golf Club... Mineola, L. I.	Youngstown Country Club... Youngstown
Country Club... Bay City	Kingswood Golf Club... Wolfeboro	Siwanoy Country Club... Mt. Vernon	OKLAHOMA
Country Club... Birmingham	NEW JERSEY	Mt. Vernon Country Club... New Rochelle	Oklahoma City Country Club... Oklahoma City
Country Club... Bridgman	Seaview Golf Club... Absecon	Coldstream Country Club... New Rochelle	OREGON
Country Club... Brighton	Jumping Brook Country Club... Asbury Park	Deal Beach Golf Club... New York	Albia Country Club... Albia
Country Club... Cassopolis	Pennbrook Golf Club... Basking Ridge	Blue Hills Country Club... Orangeburg	PENNSYLVANIA
Country Club... Dearborn	Pine Valley Golf Club... Clementon	Sleepy Hollow Country Club... Ossining	Bala Golf Club... Bala
Country Club... Dearborn	Hollywood Golf Club... Deal	Rockland River Country Club... Piermont	Conneaut Lake Country Club... Conneaut Lake Park
Country Club... Detroit	Hollywood Country Club... Eberon	Blind Brook Golf Club... Port Chester	Ellwood Country Club... Ellwood City
Country Club... Detroit	Glenridge Country Club... Glenridge	Belle Terre Club... Port Jefferson	Gulf Mills Golf Club... Gulf Mills
Country Club... Detroit	Tavistock Country Club... Haddonfield	Century Country Club... Purchase	Old York Road Country Club... Jenkintown
Country Club... Detroit	White Beach Country Club... Haworth	Kingsridge Country Club... Purchase	Kennett Square Golf & Country Club... Kennett Square
Country Club... Edwardsburg	Merchantville Country Club... Merchantville	Progress County Club... Purchase	Kittinging Golf Club... Kittinging
Country Club... Farmington	Montclair Golf Club... Montclair	Whitelaw Reid Estate... Purchase	Mahoning Valley Country Club... Lansford
Country Club... Flint	Moorestown Field Club... Moorestown	Riverhead Country Club... Riverhead	Llanerch Golf Club... Llanerch
Country Club... Grayling	Elmwood Country Club... Paterson	Rockaway Hunting Club... Rockaway	Air Deport Golf Club... Middletown
Country Club... Grosse Pointe	Laurence Brook Country Club... South River	Engineers Country Club... Roslyn	Cedarbrook Country Club... Mt. Airy
Country Club... Haslett	Homestead Country Club... Spring Lake	Brook-Lea Country Club... Rye	Pike Run Country Club... Mt. Pleasant
Country Club... Jackson	City Progress Club... Trenton	Rye Country Club... Rye	Aronimink Golf Club... Newton Square
Country Club... Midland	Crestmont Golf Club... West Orange	Westchester-Biltmore... Rye	Manufacturers' Country Club... Oreland
Country Club... Monroe	NEW YORK	Salisbury Golf Links... Salisbury	Marble Hall Golf Links... Philadelphia
Country Club... Mt. Clemens	Albany Country Club... Albany	Salisbury Country Club... Salisbury Plains	Pennsylvania Golf Club... Philadelphia
Country Club... Mt. Pleasant	Clearview Golf & Yacht Club... Bayside, L. I.	Sleepy Hollow Country Club... Scarborough	Philadelphia Country Club... Philadelphia
Country Club... Muskegon	Bedford Golf & Tennis Club... Bedford Hills	Quaker Ridge Golf Club... Scarsdale	Philadelphia Cricket Club... Philadelphia
Country Club... Northville	Kalurah Golf Club... Birghampton	Scarsdale Golf Club... Scarsdale	Whitemarsh Valley Country Club... Philadelphia
Country Club... Novi	Briar Hills Country Club... Briarcliff	Sunningdale Country Club... Scarsdale	Phillipsburg Country Club... Phillipsburg
Country Club... Orchard Lake	Briarcliff Lodge Sports Club... Briarcliff	Whippoorwill Country Club... Somers	Phillipsburg Country Club... Roxborough
Country Club... Pontiac	Morris Park Golf Club... Bronxville	National Golf Links... Southampton, L. I.	Green Valley Country Club... Roxborough
Country Club... Pontiac	Cedarhurst Golf Club... Cedarhurst	Houwenkopf Country Club... Suffern	Roxborough Country Club... Roxborough
Country Club... Rochester	Leewood Golf Club... Crestwood	Oak Ridge Golf Club... Tuckahoe	Valley Forge Golf Club... Valley Forge
Country Club... Royal Oak	Richmond County Golf Club... Dongal Hills	Tuxedo Golf Club... Tuxedo	Fox Hill Country Club... Wilkes-Barre
Country Club... Sturgis	North Hills Golf Club... Douglaston, L. I.	Colonia Country Club... West Albany	Pup's Foot Golf Club... Wilkesburg
Country Club... Troy	Fairview Country Club... Elmsford	Gedney Farm Golf Club... White Plains	RHODE ISLAND
Country Club... Ypsilanti	Knollwood Country Club... Elmsford	Metropolis Country Club... White Plains	Misquameucut Golf Club... Watch Hill
MISSISSIPPI	Metropolis Country Club... Elmsford	Westchester Hills Golf Club... White Plains	TENNESSEE
Country Club... Hopkins	Farmingdale Country Club... Farmingdale	Clearview Country Club... Whitestone	Oriental Country Club... Nashville
Country Club... St. Louis	Rockaway Hunting Club... Far Rockaway, L. I.	Woodmere Club... Woodmere	VERMONT
MINNESOTA	Hay Harbor Golf Club... Fishers' Island	Grassy Sprain Golf Club... Yonkers	Woodstock Country Club... Woodstock
Country Club... Clayton	Old Country Club... Flushing, L. I.	Hudson River Country Club... Yonkers	VIRGINIA
Golf Association... Joplin	OHIO	High Point Country Club... High Point	Country Club of Virginia... Richmond
Country Club... Joplin	Akron's Municipal Golf Course... Akron	High Point Golf Club... High Point	Blue Hills Golf Club... Roanoke
Country Club... Kansas City	Fairlawn Heights Golf Club... Akron	WISCONSIN	WISCONSIN
	Portage Country Club... Akron	Morse Hills Golf Club... Beloit	Beloit Golf Club... Beloit
	Turkey Foot Lake Golf Club... Akron	Brown's Lake Golf Ass'n... Burlington	Brown's Lake Golf Ass'n... Burlington
	Tuscarawas Country Club... Akron	Eau Claire Country Club... Eau Claire	Eau Claire Country Club... Eau Claire
	Brookside Country Club... Canton	Nippersink Lodge... Genoa City	Nippersink Lodge... Genoa City
	Highland Golf Club... Canton	La Crosse Country Club... La Crosse	La Crosse Country Club... La Crosse
	Shady Hollow Country Club... Canton	Merrill Golf Club... Merrill	Merrill Golf Club... Merrill
		Rhineland Country Club... Rhineland	Rhineland Country Club... Rhineland
		Plum Lake Golf Club... Sayer	Plum Lake Golf Club... Sayer
		Wausau Country Club... Wausau	Wausau Country Club... Wausau

DU BAY NU-GREEN

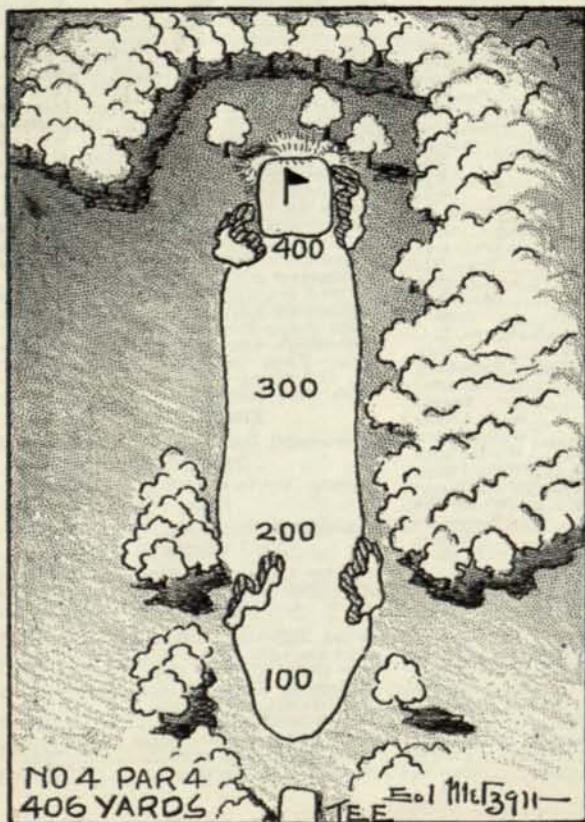
York, N. Y., Successors to Seed Disinfectants Divisions of
du Pont de Nemours & Co., Inc.



Par 4

No. 4

406 Yards

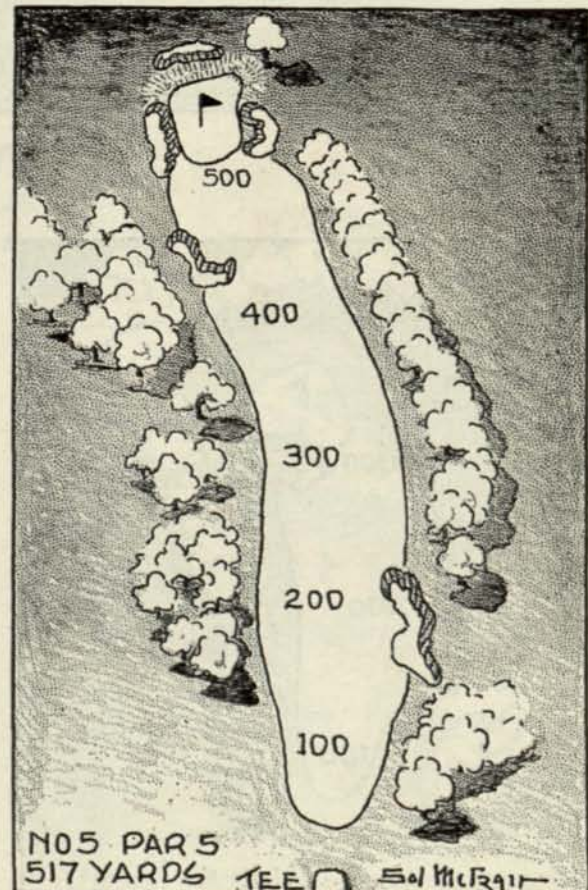


(Continued from page 21)

STRAIGHT down the line from the tee, but certainly not off course on the right. Distance is a great factor, for the approach to the three level green with its depressed center had best be played at short range. Out-of-bounds to the right and bunkers to the left at a distance of 215 yards. A narrow opening to the green, not over 20 yards in width, with bunkers extending the whole stretch on either side of the green.

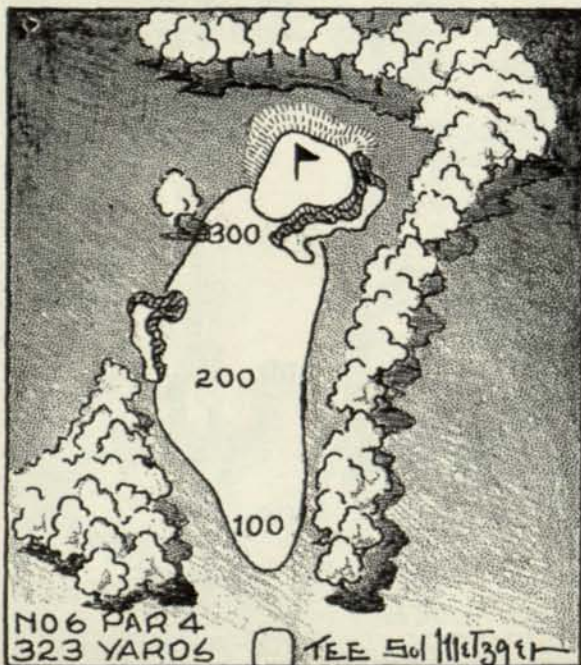
*Par 5***No. 5***517 Yards*

A SLIGHT dog-leg which may be reached with a brassie second from the right-center of the fairway. A pulled drive is likely to be disastrous. Trees skirt either side. The green has a slight dog's back which should be studied carefully by the players attempting a long second to reach, otherwise the ball may drift on either side into deep traps.

**HUBBARD NURSERIES****CREEPING BENT STOLONs***Washington and Metropolitan Strains*

Pure, free of weeds, and of one season's growth

DR. AMOS F. HUBBARD, N. Kingsville, Ohio

*Par 4***No. 6***323 Yards*

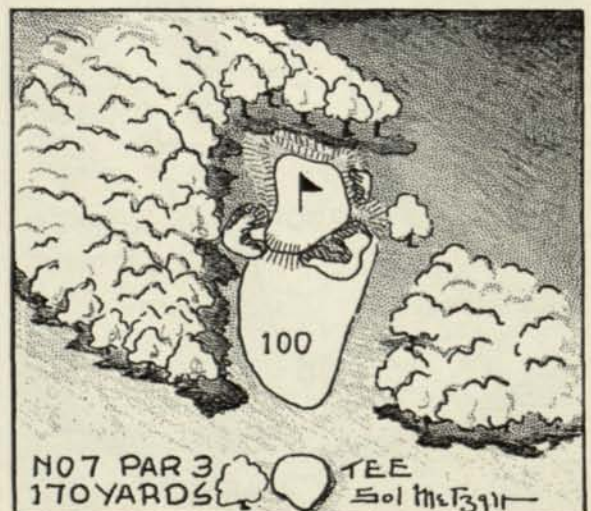
THE drive should be placed down the left of the fairway close to the pit, for the green opens its contours to the approach from this side. A large pit on the right makes necessary a tight lofted approach from that angle. The drive will carry the player within 65 yards of the green because it is slightly downhill. From there, it is a delicate mashie pitch to an unusually small green with a bunker placed into the very edge. Golfers know the difficulty and necessity for wrist control for such shots.

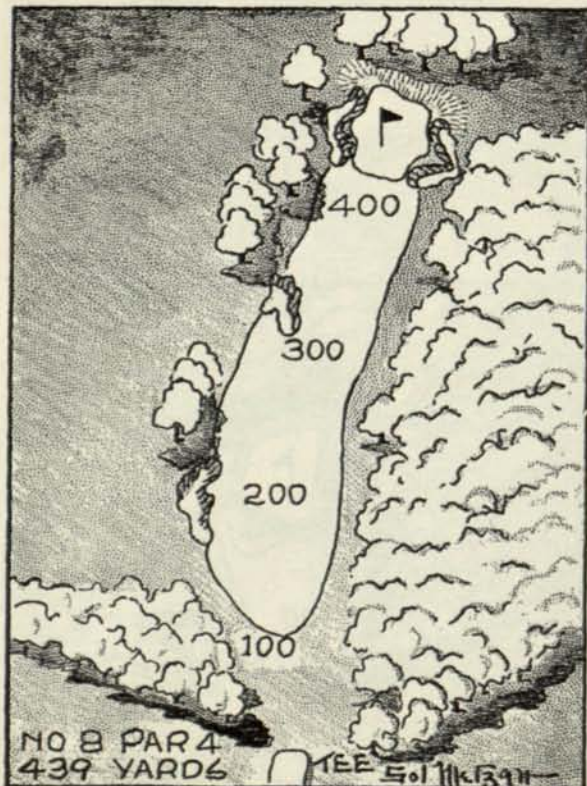
N06 PAR 4
323 YARDS

TEE 501 Metzger

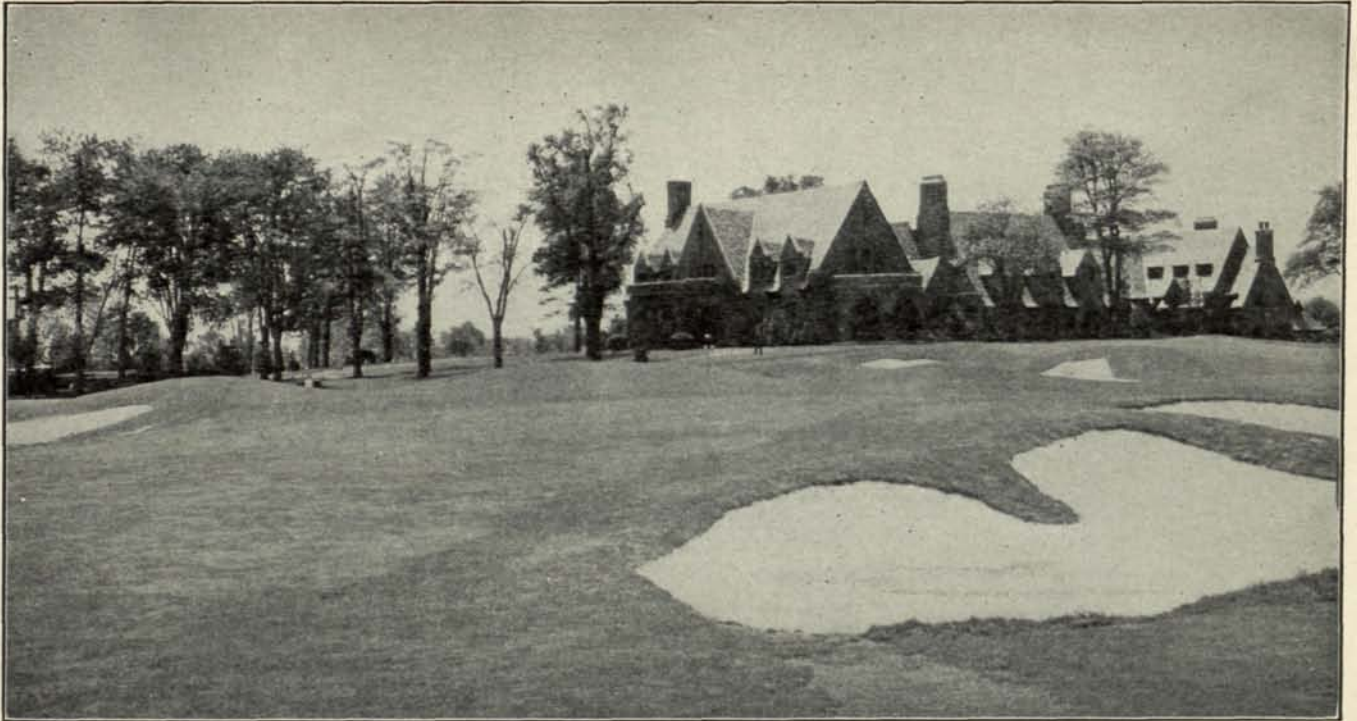
*Par 3***No. 7***170 Yards*

THIS slightly elevated green is best gained with a high drift from a 4 or possibly a 5 iron. The depression in front makes the true distance a trifle hard to gauge. Possibly this is the hole which will ruin the chances of many of the best players unless they study carefully the lights and shadows and secure the proper club for the distance. The traps are the deepest on the course and flanked with long grass at the back.

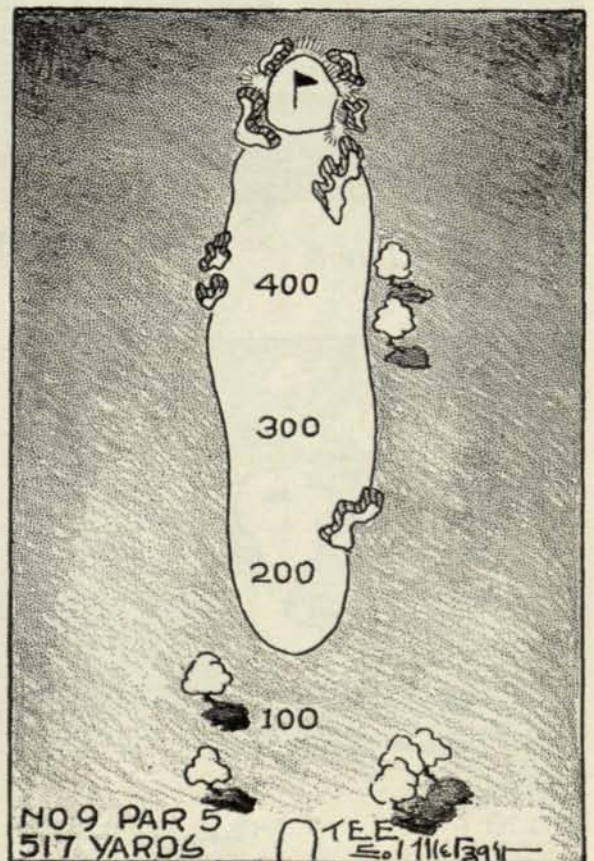


*Par 4***No. 8***439 Yards*

A 2 IRON should get the pro' home with his second, best played from the left-center of the fairway. Crowding the drive over to the right leaves a treacherous recovery. Another hole which demands utmost accuracy for the second shot because of the "fall-away" several yards in front of the green, sending the ball either to the right or left into bunkers.

*Par 5***No. 9***517 Yards*

CERTAINLY one of the toughest holes on the course. Two very long shots may get home if the drive is far out on the left of the fairway. From the right the chance of getting the green is slight. In any event the long second must be played with utmost precision if the beating of par is sought. The open approach to the cup for the satisfied-with-five player should follow a second placed on the left. Unusually well trapped because of the narrowness of the approach to the green and the practical impossibility of getting the ball at the hole from either right or left owing to the intervening undulations of the green.

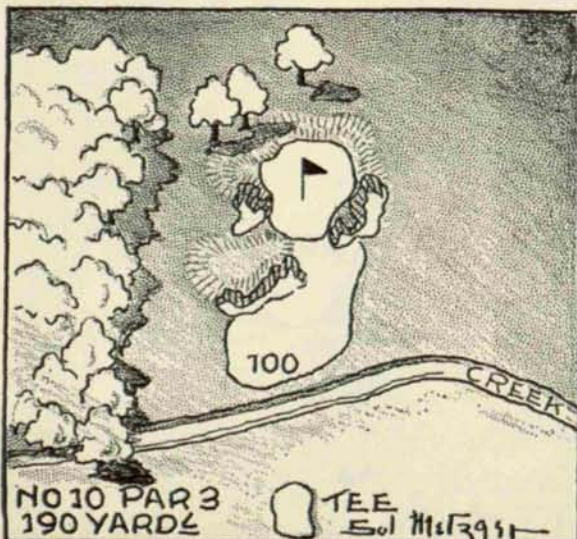




Par 3

No. 10

190 Yards



EITHER a high drifting iron, probably a 2 or a spoon, or a slight pull in to the green is necessary here, for trouble is all around: rough and waste land in front and on the right; woods on the left. The hummock, flaring into the green from the left-front, must be duly respected. Swamp land to the right of the fairway, trees and long grass to the left, deep bunkers and a green with unusually steep slope.