

drive wheels are tired with compressible pads to eliminate marks on the turf, and there is a special lifting attachment which will take the mowers high enough off the ground when crossing roads and paths to guard against injury of the cutting reels. The mowers are 13-inch size.

The machine may be used with triple greens mowers, or all three may be detached and the regular 30-inch fairway cutting unit attached for mowing lawns, approaches, etc.

Added to the Worthington line we also find an all-steel constructed hand putting green mower, designed like the units used with the "Overgreen," only with an 18-inch reel.

Visit Booth Number 10, where Ernest Chamberlain, Inc., the Detroit Worthington representative, will tell you all about these new pieces of equipment.

Driving from the Mower Seat

THE Continental Cultor Company of Springfield, Ohio, manufactures a light weight fairway tractor which can be used with mowers, rollers, and other maintenance equipment, as well as with side-cutter bar for mowing the rough.

One of the features of this tractor



The "Cultor" with mowers in operation

is an elongated steering post designed to allow the operator control from the seat of the implement, away from the heat of the motor, and allowing clear vision of the work in process.

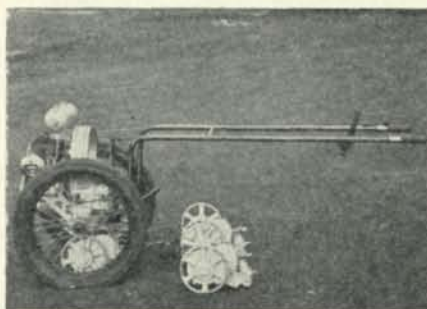
Pictured herewith is the "Cultor," showing its unusual operation with gang mowers.

Invitation to Try "Nu-Green"

THE Bayer Company, Inc., manufacturers of "Nu-Green" used for the control of brown-patch, have issued an invitation to greenkeepers to try out this product on several greens this coming season.

"Nu-Green" is a chlorophenol mercury preparation, combined with a special stimulant which encourages a new growth of grass to replace the diseased areas. It is valuable in the prevention and cure of both large and small brown-patch.

A reduction in price of fifty cents per pound is announced on this product, and a card to the Agricultural department of the Bayer Company at 117 Hudson Street, New York, will bring you a trial package of "Nu-Green" to use this season.



The Worthington "Overgreen" mower

Write for Miniature Golf Bag

THE Philpott Rubber Company of Cleveland is introducing a new water hose, which is unique in its appearance, and practical from a service standpoint.

It has a flat top corrugated cover which will not roughen up new grass or collect sand and dirt. These corrugations are so placed as to reduce kinking.

It is manufactured under the Hydraulic Lead Mold Process which thoroughly impregnates the tube through two braids of cord into an unusually heavy cover.

The name of the club will be imprinted without charge on every

twenty-five feet of hose purchased. Sample of hose in attractive miniature golf bag will be mailed upon request.

Prosperity Fertilizer Distributor

THE Prosperity Laboratories Company reports that a great many clubs are now making fertilizer application to their fairways. A two-fold purpose is thus accomplished—the fertilizer will work its way down to the roots when the ground thaws, and less difficulty is experienced in obtaining uniform distribution.

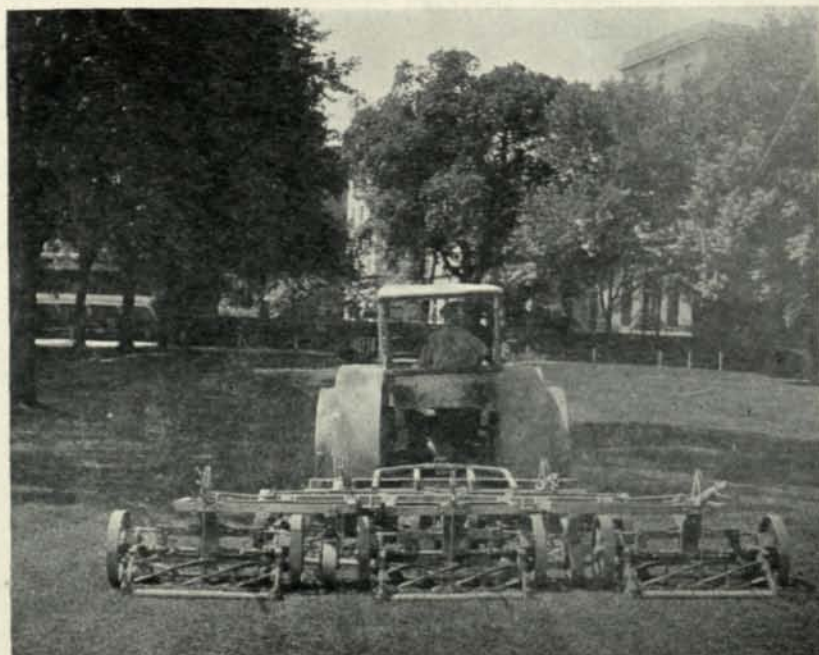
Their special fertilizer for fairways is almost entirely from organic sources and provides a continuous supply of food throughout the growing season. The quantity and proportion of the essential elements are incorporated in the ratio, and are released gradually into available forms, as required by the plant.

The benefits in prolonged vigorous growth of deep color are obtained at a reasonable cost.

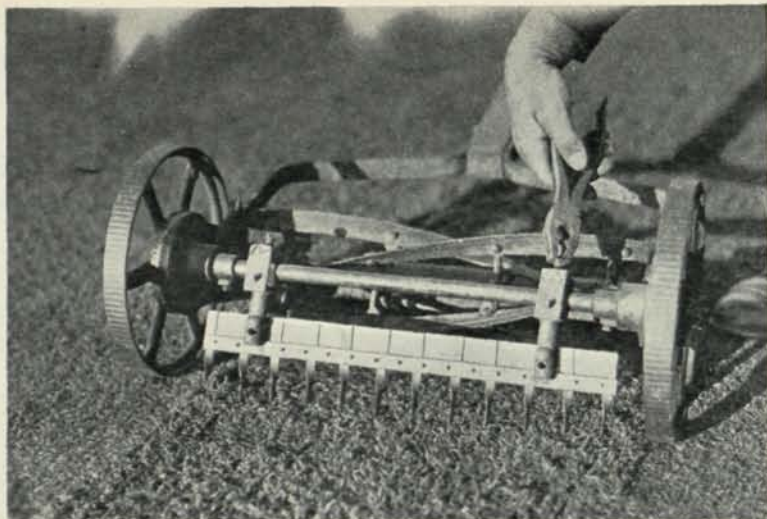
A folder describing this as well as their Bent Grass Fertilizer, which is built for Bent Greens only, will be mailed upon request.

Dayton Sprinklers of Sturdy Design

THE Dayton Irrigation Company of Dayton, Ohio, will show the Dayton Greens Sprinkler, Type G-2, especially designed for



The F & N "Quintet" in use on the course of the French Lick Hotel,



The new "lawn comb" built by Stumpp & Walter Co.

hard usage, at Booth 24, on the golf show floor of the convention. We are informed that the slow moving adjustable nozzle of this sprinkler makes it possible to cover any area desired up to a 100-foot circle. It delivers 15 gallons of water per minute and distributes it evenly from base to the extreme outer edge. The vital moving parts are concealed in a rust-proof housing which protects it against the rough handling which most sprinklers must stand on the average golf course.

It is so designed that dirt or foreign substance cannot get in the driving arms, clogging up the driving arm holes.

It is small and compact and can be furnished on a roller base if desired.

The Dayton Fairway Sprinkler-Type "E" is sturdily made and simple in construction. In describing the construction and operation of this large sprinkler, the manufacturer states, "it has only three moving parts. It connects to a 2-inch hose and will throw 100 gallons of water per minute at 70 lbs. pressure over an area of 160-foot circle. It gives even distribution and thorough coverage. It is equipped with interchangeable nozzles for water pressure available. It is positive driven, built for hard usage, and is fully guaranteed."

Stumpp & Walter at Booth 8

BOOOTH Number 8 at the Greenkeepers' Show will be filled with a diversity of items used by the greenkeeper. Before mentioning any

of them, let us call your attention to the new issue of "Golf Turf" for 1928, published every year by this company, and which contains worthwhile information for greenkeepers and Green committee chairmen.

From the large number of S & W products, we select one which has enjoyed an unusually large sale to golf courses during the past year. The Sawco rotary soil screen in Model Number 2 has a special modification for the pulley, allowing the use of engines of varying R.P.M., and adjustments insuring the proper speed of the screen cylinder.

Don't forget your copy of "Golf Turf" when you visit the Stumpp & Walter booth.

Two new appliances are introduced by this company which will be found most useful on golf courses, parks, cemeteries, and in fact anywhere that a fine turf crop is cultivated. One is a Lawn Comb, which may be attached to any lawn mower, a sharp toothed tool designed to scarify the turf, break soil crust, and aerate the soil around the feed roots. It is also useful in eradicating crabgrass and clover, pulling up Bermuda runners, and in preparing turf for top-dressing, fertilizing and reseeding.

The second item coming to our attention is a lifting attachment for side wheel mowers, which locks the rear roller and when the handle of the mower is raised into operating position, it is possible to mow grass which has grown too long to cut readily.

These two new items are shown herewith, and information about them will be forwarded by the Stumpp & Walter Co., of New York.

Power Soil Shredder

KEMP Soil Shredders have a feed drum that will handle any kind of soil or top-dressing mixture. Two sizes are made to handle from six to twelve cubic yards per hour and they load from either side and front. They are also equipped with single or double screens. Mounted on flat, wide wheels these compact machines are easily hauled about making them practical for field or shed work.

A gallon and a half of gasoline will run Model No. 1 for 10 hours.

If you write to the Kemp Manufacturing Company, Erie, Pa., they will be glad to send catalogue showing different models.

Jacobsen Power Bent Mowers

THE news of the month from Jacobsen Manufacturing Company, Racine, Wisconsin reports unusual activities in this well-known Power Lawn Mower factory. They state that this year especially shows the tendency of greenkeepers to select and purchase their equipment well in advance of the opening of the golf season. In fact they seem to "out-smart" the superintendents of parks and cemeteries who often wait until the last minute to get their equipment. For this reason orders for Jacobsen Creeping Bent Power Mowers in both the 19-inch and 24-inch sizes are topping production records at the Jacobsen factory just now.



Special lifting attachment for all side wheel mowers, a new specialty of the Stumpp & Walter Co.

Hardie Sprayers for Golf Greens

THE Hardie line of sprayers has been for 27 years one of the outstanding lines used by orchardists and horticulturalists, and offers several especially suitable models for the spraying of fertilizers on greens. The manufacturers describe their construction and operation as follows:

"Hardie sprayers are so designed and built as to provide complete and constant agitation of the fertilizer solution, thus assuring that every application is of uniform strength. The spray distributes evenly over the green and the spotty and uneven results of hand application of dry or liquid fertilizers is avoided.

"The use of the sprayer on the greens results in a great labor saving and insures the maximum results from any given quantity of fertilizer, much of which is often wasted when applied by hand. The sprayer not only handles all fertilizing solutions, but affords the means of effectively applying the chemical solutions for brown-patch.

"Hardie units which find favor with greenkeepers are, The Hardie No. 9 Triplex delivering 9 gallons per minute at 300 pounds pressure and The Hardie No. 12 Mogul with the greater capacity of 12 gallons per minute at 350 to 400 pounds pressure. Both outfits carry a 200-gallon tank.

"All Hardie power sprayers are self oiling, yet offer no enclosed or inaccessible parts to present costly service trouble. It is impossible for the spraying solution to mix with the oil. Hardie outfits are mounted on specially designed trucks which afford ease in handling, and the line includes over 20 models suitable for spraying requirements on greens."

Look over the Hardie exhibit at Booth 7 where one of their models will be displayed for your attention.

"Herbicide" for Weeds

THERE are many places around golf and country clubs where a weed destroyer can be used to great advantage for getting rid of undesirable vegetation. For example, Herbicide is used for destroying grass and weeds in sand traps, around bunkers, on roadways and parking spaces. It is also used extensively on tennis courts.



The purity room of the International Seed Testing Laboratories in the Park Murray Building, New York City. Mrs. Pattison, director, seated at the right. Miss Stanton, assistant director, at left

Good Seed Means Good Turf

SEED is necessary for turf, but good seed is absolutely necessary for good turf.

For this reason we know the readers of this magazine are going to appreciate and find helpful the articles which the Directors of the International Seed Testing Laboratories are writing for us, and which will be a feature of our 1928 issues.

The International Seed Testing Laboratories were established in September, 1927, by two well known seed analysts, Ethel Ely Pattison and Julia M. Stanton.

Mrs. Pattison has had ten years' scientific experience at the Seed Laboratory, U. S. Department of Agriculture and ten years' commercial experience in this country and in Europe. She is perhaps better known internationally than any other woman in the seed world.

You merely sprinkle the ground with the diluted "Herbicide," and in about 48 hours the vegetation is completely killed. It is, therefore, a great labor saver.

Each gallon of "Herbicide" can be diluted with 50 gallons of water, and it can be applied with ordinary watering cans.

"Herbicide" is manufactured by the Reade Manufacturing Company of Jersey City, N. J., and they are pleased to ship this material on approval.

Miss Stanton for five years previous to the establishment of the Laboratories was the Seed Analyst for one of the largest seed merchants and importers on the Atlantic Seaboard.

The Laboratories were established for the sole purpose of giving much needed "Seed Service." Just what is meant by "Seed Service" is demonstrated by visiting the very well equipped laboratories and offices at 11 Park Place, New York City. The equipment is the very finest and most modern. Everything is strictly in compliance with the standard set by the Association of Official Seed Analysts. Their "seed service" includes testing for purity and germination; arbitration, purchasing, special experiments, etc.

The laboratories are members of the Association of Commercial Seed Analysts, an association which Mrs. Pattison was largely instrumental in forming.

Traveling Fairway Sprinklers

AT the Pine Lake Club, Pontiac, Michigan, there is an installation of Pelican traveling fairway sprinklers which has been in operation for two years. We learn from the Pelican Works, 148 Woodbridge Avenue, East, Detroit, Michigan, that these sprinklers operate automatically straight down the fairway on the force of water pressure through the hose as it turns off the reel.

Plans of water systems will be

carefully studied by engineers of the Pelican Works, and estimates of individual installations will be made to any golf club interested.

Mower Reel Bearings Guaranteed

"WE claim that we have the only self-adjusting and self-sharpening fairway mower made," says the F & N Lawn Mower Company. With this goes a guarantee that during the life of the mower the reel bearings will never be out of adjustment.

The F & N Quintet in operation on the French Lick Hotel Company golf course is shown in the accompanying photograph.

having service stations in all of the other large centers. This nationwide network of branch offices and distributors is supplemented by a force of some fifteen field men who spend all of their time in direct contact with the trade, both dealer and consumer.

In New York City the factory branch of the Ideal Power Lawn Mower Company is located at 237-39 Lafayette Street, with Mr. W. I. Alling in charge. Mr. Alling has been in the golf and power lawn mower business for a great many years, being associated with the Ideal Company at the home office in Lansing before taking charge of the eastern

tributors and dealers, covers the states of Indiana, Illinois, Iowa and Wisconsin.

The newest branch is located in the Detroit district at 161 Vester Street, Ferndale, Michigan, in charge of Mr. Robert N. Rockwell, who formerly sold the Ideal line through one of the large eastern distributors. The Detroit branch cares for the territory including the eastern half of Michigan and western Ontario.

In all of these branches in Detroit, Chicago, New York, as well as at the factory in Lansing, is maintained a complete stock of maintenance tools and equipment that the purchasers in practically any section may be close to the source of supply for whatever may be needed.

Bean Power Sprayers on Demonstration

THE Bean Spray Pump Co., of Lansing, Michigan, (Booth 16 at the National Greenkeepers' Convention and Show in Detroit at the Fort Shelby Hotel) will be very glad to discuss with anyone interested the many advantages of applying fertilizers, fungicides and insecticides to the golf greens with high pressure spray machines. The Bean Spray Pump Co., are pioneers in this business and are the world's largest manufacturers of high pressure spraying machinery, having been in the business for nearly 45 years.

During the last several years a great many machines have been sold for use on golf courses for applying fertilizers, as well as applying fungicides for the control of Brown Patch and insecticides for the control of different pests. These machines are also needed very badly on a number of golf courses for spraying the shade trees due to the number of pests that attack the foliage of the trees.

Another use for these machines is the applying of whitewash and cold water paints to the fences, barns and other out buildings on the golf courses.

The Bean representatives will be very glad to take anyone interested to a nearby garage and demonstrate one of the large model machines. As the time is very near when every golf course will consider a sprayer as much a necessary piece of equipment as the mower it would be well for greenkeepers to get first hand information on these machines while at the Show.



The New York Ideal Factory Branch at 237 LaFayette Street

Ideal Service in America

IT is doubtful if there is any class of business where service is more important than in connection with the sale of equipment for the golf field. Practically every golf club with its land, buildings, etc., represents a considerable investment and the amount necessary each year to keep the entire layout in good order for the players means considerable expenditures.

Realizing this situation the Ideal Power Lawn Mower Company with their home office and factory at Lansing, Michigan, has built up a nationwide service to look after both the sales and service of a varied line of grass cutting equipment and allied supplies. This complete organization consists of four factory branches located in New York City, Chicago, Boston, Detroit, with distributors

territory. Under direct jurisdiction of the New York Branch is the factory and service branch for the Boston territory located at 273 Boylston Street, Brookline, Massachusetts, these two offices, with numerous sub-agencies, handling all of the New England states and eastern territory from a line east through the center of New York State.

The Chicago Ideal Branch is located at 413 West Chicago Avenue, Chicago, Illinois, this being a new location recently leased by the company to give more room and better service and display facilities. This branch is in charge of Joe M. Egloff, another old Ideal employee, Mr. Egloff formerly traveling for the company, covering several of the central states before taking charge of the Chicago district some two years ago. The Chicago Branch, with their sub-dis-

Around the Office Desk

"HERE are my dues for 1928," writes Alex Miller of Mountainview Farm, New City, New York, "and I hope to read all about what happened at the convention in the April number of the magazine." Mr. Miller finds it impossible to attend, but what happens will be printed in the April and May issues of the GREENKEEPER, for the benefit of those who, like Mr. Miller, cannot make the trip to the annual convention.

"WE will be in Detroit in full force," comes word from James Muirden, vice-president from Cincinnati, which means that all the greenkeepers of the Cincinnati district will be at the Hotel Fort Shelby when this magazine is issued. "I'm enclosing a check for another member, and two more will follow shortly," adds Mr. Muirden, and right now we wish to put in an order for a special decoration to be conferred upon this collector of memberships. He must be visiting every greenkeeper down around Cincinnati, at the rate he sends them in.

PRESIDENT MORLEY, when he received the February issue of the magazine, wrote his approval thus, "I received the February number. Like all the others, it is fine. It would take two pages to express myself fully."

ALEX PIRIE, veteran pro-greenkeeper of the Chicago district, and president of the National Professional Golfers Association, said in a recent letter, "If your convention is not a success, it is not the fault of your officials, as they are making it impossible for grass to grow under their feet." Mr. Pirie, in addition to appearing on the speaking program, has accepted his appointment to serve on the committee on Laws at the convention.

DETROIT is on the job, Entertainment committee, hotel management, Show committee and all, in a determined effort to make a whirlwind success of the big meet. The publicity manager (name, dark secret)

assures us of a large Detroit attendance, and many coming in from far away points. As making good is a regular habit of the publicity manager in question, realization should exceed anticipation.

SEVEN-FOOT beds for tall members are a specialty at the Hotel Fort Shelby. Any member taller than that will kindly shrink to fit the accommodations.

LATE morning hours are not to be encouraged, but as the big banquet is scheduled for the evening of Friday, the 24th, it is suggested that members do not leave calls with the room clerk for earlier than 8:30 Saturday morning. The business meeting will start at 10 A.M. on Saturday, and sleepy-heads will be all out of order.

A GREENKEEPER'S PRAYER

By T. L. LOMBARD, *Chairman Green Committee*
Berkshire Hills Country Club,
Pittsfield, Mass.

GIVE unto me abundant strength to bear my many burdens.

Broaden me in the knowledge of my daily work. inculcate me with faith in all mankind.

Make me humble before the critical membership that they also may be contrite.

Enlighten me in all advances of our art but allow of discretion as to the application.

Deliver me from the trials and tribulations of each season's turnover.

Endow the Green committeemen with a large measure of vision and a generous portion of tolerance.

Pour out Nature's beneficial moisture on my thirsting turf.

Enrich my soil so that the greenest of the grass thereof shall be supreme.

Make the worms of the earth to vanish.

Give us generous portions of sunshine, both for the greens and our own souls.

Let the supreme effort be for good fellowship and understanding rather than low scores.

Above all grant me an appreciative directorate controlling a substantial bank balance.

AT the Motor Boat Show held recently at the Grand Central Palace, New York City, Mr. A. J. Wilder, late of Cleveland, now of Fenimore Country Club, White Plains, N. Y., was seen piloting an interested group of greenkeeper friends around. Mr. Wilder was discoursing on the various exhibits—with particular eloquence on the subject of speed boats, and we noticed that he accumulated a goodly supply of motor boat literature.

CHARLES E. MILLS, Florida member, writes us from West Palm Beach that he has been doing missionary work all through Florida during the past few months, in an endeavor to increase the membership in the National Association. That's why we have been receiving several inquiries from that section, and today we have an application from W. Roy Smith of Olympia, Florida, which is due to the good work of Joe Mitchell, veteran professional of the Cleveland district. Mr. Mitchell is at the Olympia Golf Club for the winter.

J. O. CAMPBELL, formerly of Kansas City, and more recently located at Normal, Nebraska, has

(Continued on page 47)



Self-Adjusting

Smooth mowing is permanently assured with F. & N. TITAN Fairway Mowers by the patented F. & N. Self-Adjusting Device in the revolving reel. No attention or difficult adjustments by hand are necessary.



The F. & N. "Quintet" Fairway Equipment

TO stand the gaff of rugged, heavy tractor service, mowers must be designed and built especially for this work. F. & N. TITAN Fairway Mowers are! They're large—drive wheels are 17 inches high. They stay in alignment—the interlocking frame and cutter bar assure this. They run easily, cut smoothly for an unusually long time—assured by gears cut from drop-forged, carbonized steel, running in oil-tight gear case. Also assured by genuine, heavy duty, Timken Roller Bearings; five tempered crucible tool steel blades. Least attention and care are required, too, because of the automatic gear shift, the patented self-adjusting device, and other superior and exclusive features that gladden the hearts of caretakers. Get all the facts. Write us today for catalog and prices.

Supplied in gangs of three or five for Fordson, Staupe, International and any other tractor, complete with attachments and flexible, all-steel frame.



The F. & N. LAWN MOWER CO.
RICHMOND, IND. U.S.A.



Prince Edward Island Bent

By CHARLES C. CHANDERLIN

PRINCE Edward Island Bent seed is grown under the supervision of the Seed Commissioner of the Dominion of Canada.

Prince Edward Island Bent seed is acclimated to withstand the severe winters. The 95 % pure seed carries a minimum of weed seeds which means a material saving in labor for the hand weeding of a green. It is practically pure as to variety and will produce a turf uniform in color and texture.

The writer is a member of the Green committee of the Cedarbrook Country Club in Philadelphia, where many experiments have been made with this particular strain of bent. We started a nursery at Cedarbrook with the idea of using it in patching up our greens, when removing white clover patches and repairing damaged spots. After using the entire nursery, we found, very much to our surprise, that the nursery re-established itself.

Early last spring, we decided to use, when composting our greens, five pounds Prince Edward Island bent seed in the top dressing. The results were highly gratifying. This bent turf looks very similar to pure velvet bent.

Editor's Note.

Mr. Chanderlin has been connected with the Philadelphia Seed Co. for seventeen years and is in charge of their grass seed department.

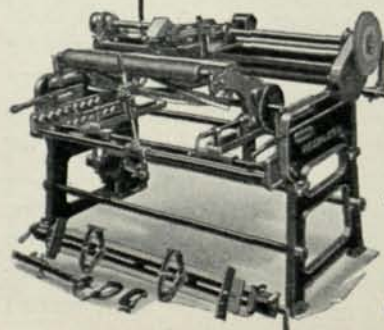
We will exhibit at the International Golf Show,
Hotel Sherman, Chicago, March 12-17, 1928



If You Would Keep GOOD TURF—Protect it!

YOU have spent much time and money to get those beautiful fairways and greens,—and well you know how easily they get damaged. It is not generally known, however, that dull lawnmower blades will pull and tear the turf, making bad spots easily noticeable. The Peerless Lawnmower Sharpener is a simple but wonderful machine that sharpens all makes of Lawnmowers scientifically—quickly—perfectly; does the work as nothing else can. Grinds a perfect bevel and clearance—mowers cut like a pair of new shears. Operated by a 1/4 H. P. motor—attach it to your light socket. Special Grinding Wheel for sharpening grass shears, sickles, scythes, axes, etc. Skate Sharpener Attachment included—sharpens all makes of skates. Will pay for itself the first season. Hundreds of Golf Clubs, large and small, use the Peerless. Write for Catalog and list of users.

Merion
Cricket
Club
Philadelphia
"One of
Our Users"
Wide
World
Photos



The Fate-Root-Heath Co.

825 Bell St.
Plymouth, Ohio

The Peerless
Lawnmower
Sharpener



The 12th Green at the Fenimore Country Club, White Plains, N. Y.
where the Metropolitan Amateur Championship is to be held this year.
Grass Seed for this course supplied by the Stumpp & Walter Co.

Today's low prices on **Bent Grass Seeds** should encourage the more liberal sowing of these grasses which, on account of their high cost, in the past, were restricted largely to Putting Greens.

Sow Bent on Your Fairways and Lawns! The extreme fineness and beauty of turf produced from Bent Seed are well known and its superiority for use on the golf course is recognized.

For Spring Sowing, We Offer

Grass Seed

of Known Quality

TESTED for PURITY and GERMINATION

South German Bent Colonial Bent Rhode Island Bent (Washington Grown) Bent Stolons

Special prices on the above, or any other turf producing grasses, such as Fancy Red Top, Kentucky Blue, Chewing's N. Z. Fescue, Sheep's Fescue, Poa Bulbosa, Bermuda Grass, etc., upon request.

COCOOS BENT We are now convinced, after several years of trials in the different sections of the United States, other than the Pacific Coast, where it is already recognized as the outstanding Putting Green Grass, of the fine turf producing qualities of this Creeping Bent. Use Cocoos Bent Seed for your new greens or work it into existing greens, or wherever a fine and enduring turf is desired.

Per lb. \$2.50, per 10 lbs. \$22.50, per 100 lbs. \$200.00

Special Putting Green Bent Formula — Consists of imported and domestic grass seeds of the highest quality, that will produce a fine, uniform and enduring turf. Use 15 lbs. to 100 sq. ft., one-quarter to one-half this quantity for renovating 10 lbs. \$8.00, 100 lbs. \$70.00
Standard Putting Green Formula, 10 lbs. \$7.00, 100 lbs. \$60.00

Superfine Fairway Formula (with Bent) — Contains Bent Seed, as well as Kentucky Blue Grass, Superfine Red Top and Chewing's N. Z. Fescue. We adapt it to your conditions so that a uniform and enduring turf is secured 25 lbs. \$13.00, 100 lbs. \$50.00
Fairway Formula, Fine Quality, 25 lbs. \$10.00, 100 lbs. \$35.00

Special formulas for Tees, Rough, Bunkers, Polo Fields, Club or Private Lawns, furnished upon request

Remember:—All our seeds are of the highest quality, obtained direct from the most reliable sources of supply and are botanically true to name. All seeds are new and are cleaned and re-cleaned until they are brought up to the highest possible state of purity and germination, special care being given to the elimination of weed seeds.

Without obligation, we shall be pleased to send a representative who, from long experience, is qualified to advise regarding grasses and furnish such other information as is necessary for the best results

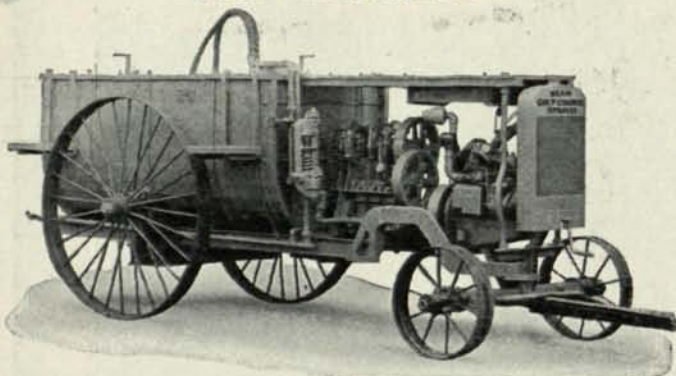
Golf Course Equipment
We carry a complete line of equipment and supplies. Call at our new Golf Equipment Display Floor at 40 Vesey St., N. Y., or write to us.

Stumpp & Walter Co

"Golf Turf"—This interesting and instructive book, devoted to production and maintenance of fine turf, sent on request to Chairmen of Green Committees or Greenkeepers.

Specialists in Golf Grass Seeds and Equipment
30 and 32 Barclay Street New York City

Bean Golf Course Sprayer for Applying Fertilizers, Fungicides and Insecticides



Don't fail to visit our exhibit at the National Greenkeepers' Convention and Show at Fort Shelby Hotel, Detroit.

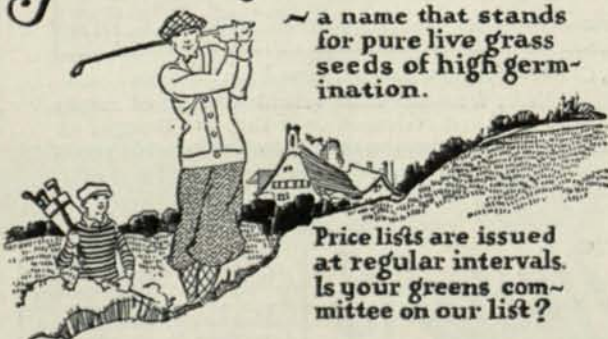
Our representatives will be in attendance and will be very glad to discuss spraying problems, also to exhibit and demonstrate one of our large size golf sprayers which will be on exhibition in a nearby garage.

Ask for catalogs describing the largest line of spraying machinery in the world.

BEAN SPRAY PUMP CO.
Lansing Michigan



Old English Grass Seeds for Golf Courses



The Philadelphia Seed Co.
Old English Grass Seeds
103-105 Arch St. Philadelphia Pa.

Tips on New Construction

(Continued from page 10)

Grass seed was sowed 150 pounds per acre on fairways and 120 pounds per acre on the general planting, comprising 167 acres.

A Few Construction "Don'ts"

From some of the developments which have come from this course, we can give constructors the following "Don'ts." Don't work your soil until it is fluffy. It is better in a slightly packed condition.

Don't forget to protect all places where there is a possibility of washes, with sod if available or with a quick growing grain seed.

Don't allow the tile and water ditches to remain open any longer than necessary for this gives settlement no chance before seeding.

Don't use a pipe type farm roller after seeding. This gives uneven pressure and consequently variable growth.

Don't seed too soon after fertilizing.

Don't forget to provide plenty of inlets for surface water to get into the tile lines more quickly than by infiltration.

* * * *

Clubhouse Gardening

(Continued from page 21)

masses of color in harmony and something fresh to meet the eye as one proceeds through the grounds.

Developing Color Schemes

A plan that has been adopted for a number of years, though perhaps not general, but which is more definite than some, is to plant out in masses so as to form color grouping. This is both effective in appearance and simple in operation, and may be done by planting from three to nine plants in a group, according to height, form and eventual size of the plants. For example:

Three Delphinium

Three Phlox (decussata type)

Five Lychnis Haageano—Three Lychnis Chalcedonica

Seven Heucheras, Pyrethrums or Aquilegiae

Where dwarf Alpine plants are used five or more may be included according to desire.

(To be continued)

**Tile Drainage For Golf Courses
Is A Permanent Investment
Insures Good Turf**

Hancock Vitrified Tile is Everlasting

Write for Drainage Bulletin

The Hancock Brick and Tile Company
Orchard Avenue FINDLAY, OHIO

Buckner Has Always Led Sixteen Years of Pioneering

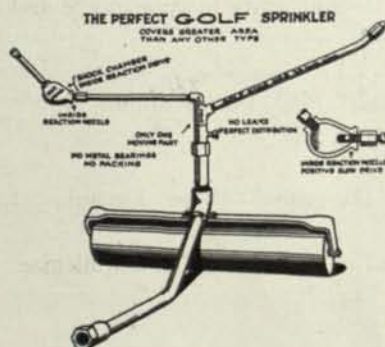
WE originated full golf course irrigation—The Golf Course Sprinkler of great area, the Slow Motion Sprinkler of greater coverage, the Golf King No. 6 of greatest area and most uniform distribution. We originated the hoseless system of golf course irrigation and the rigid quick coupling for connecting sprinklers and hose to the system. And now we have been appointed exclusive national distributors for the Underground Snap Valve and Instantaneous Coupling. This is a self closing valve allowing no leakage on hillsides or elsewhere. Saves thousands of dollars in elimination of control valves, hose and other initial cost and upkeep. The system is invisible and permits the use of one or any number of sprinklers at any point of the course without running around to open and close control valves. Simply snap the sprinkler or the hose to the valve in less than five seconds. This automatically opens the valve. Disconnect the sprinkler or the hose and the valve instantly closes. No valve boxes required. No obstructions or hazards in the fairways.

We Have Distributors in Most of the Golfing Districts

We will exhibit at the International Golf Show in Chicago, March 12-17, where we will have a special representative to explain modern methods of irrigation and to sign up for agency representation in districts not already represented. No chairman or greenkeeper should miss this exhibit in the J. Oliver Johnson section, as it will mean thousands of dollars to be saved by every club adopting our methods. This is already proven by hundreds of clubs now Bucknerized.

Another Thing

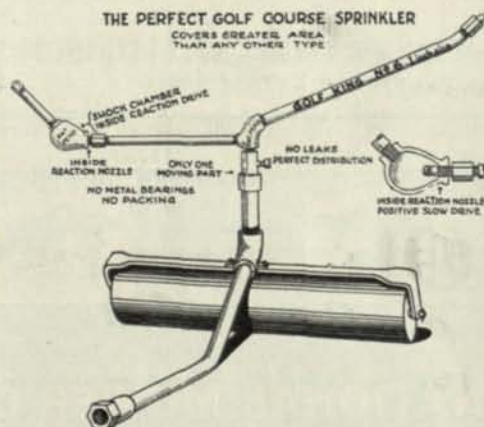
GOLF KING No. 6 has been adopted by hundreds of clubs throughout the United States and out of many thousand sold last season we have not received a single complaint. This season we have decided to put out three sizes. One for $\frac{3}{4}$ " hose, one for 1", and an oversize type for $1\frac{1}{4}$ " or $1\frac{1}{2}$ " hose. Many clubs having low pressure and small hose can now get the smaller size without having to pay for larger sprinklers with small hose connections and nozzles, thereby saving \$5.00 per sprinkler.



Prices for Fresno

On roller $\frac{3}{4}$ " size	\$10.00
Head only $\frac{3}{4}$ " size	7.00
On roller 1" size	15.00
Head only 1" size	10.00
On roller oversize for $1\frac{1}{4}$ " or $1\frac{1}{2}$ " hose conn.	20.00

Will send sample to any club where we have no agency, on receipt of above price and we will pay express both ways and refund purchase price if for any reason unsatisfactory.



This sprinkler is by comparison with other sprinklers that have gone before, a most remarkable sprinkler. It is revolutionary, as it is perfect in action under all conditions and will last longer than any other sprinkler ever designed. No more delicate gears, triggers, flappers, metal vibrators, jumping jiggers or fast whirling freaky parts to wear out or get broken off. They work fine for a while, but experience is the best teacher and we have discarded the spectacular. Save money, labor and grief. Order **GOLF KING No. 6** for either fairway or putting green work. State size of hose and amount of pressure.

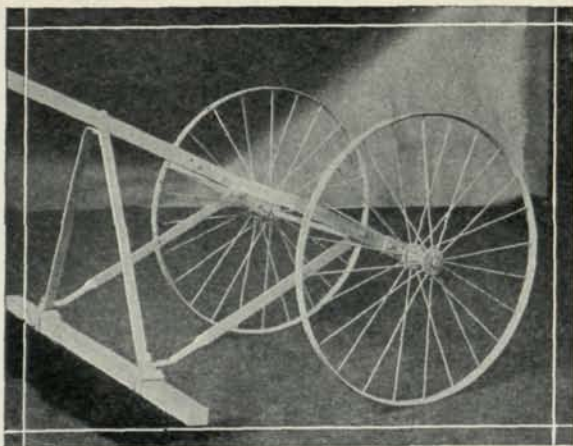
BUCKNER MANUFACTURING COMPANY Fresno, California

H. V. Carter Co., 52 Beale St., San Francisco
Worrell Engineering Co., Morristown, N. J.
Crenshaw-McMichael Seed Co., Tampa, Fla.
C. C. Saner, Houston, Tex.
William Watson, 643 So. Olive, Los Angeles
Wendell P. Miller, 403 East Broad, Columbus, Ohio

SPECIAL REPRESENTATIVES

Ivan W. Lee, 1647 Hunford St., Seattle
May Hardware Co., Portland
Sou. Ry. Supply Co., Richmond, Va.
J. Oliver Johnson, Chicago
Ernest Chamberlain, Detroit
F. C. Richmond M'chy Co., Salt Lake City

THE MacGREGOR COMPOST BRUSH



What A User Says:

MacGregor Compost Distributor Co.,
Wheaton, Illinois.
Gentlemen:

Two years ago I had the pleasure of visiting the Chicago Golf Club, Wheaton, Ill., and I was deeply impressed with the methods used in getting the soils for top-dressing worked into the turf, by the use of a compost brush.

Having used several devices for working the compost into the turf, which have not given me good results, I tried out the MacGregor brushes, and I feel, owing to the good results which I have received from them, I should acknowledge my appreciation to you for the service that the two brushes which we received from you have given.

Yours truly,
(Signed) John Morley, Greenkeeper,
Youngstown Country Club,
Youngstown, Ohio

Write for Literature

MacGREGOR COMPOST DISTRIBUTOR CO.
P. O. Box 717 WHEATON Illinois

30in. FAIRWAY MOWER \$115. \$78.	Prices marked show retail and wholesale costs for past 6 years. We now	86in. TRIPLEX \$365. \$254.
offer you wholesale prices because we proved last year that true wholesale dealings with Golf Clubs showed minimum selling costs, tremendous sales increase and most profit to all.		
NATIONAL MOWER CO. 2418 University Ave. Minneapolis, Minn. The finest type Fairway Mower built with double sets of tempered steel cut gears in oil tight cases. 5 FLOWERS & HITCHES Write for literature.		
 \$740 - \$555.	 \$595 - \$495. 142 in.	



Delivered
prices
quoted on
request

Dept. G THE E. BIGLOW CO. New London, O.

Municipal Golf

(Continued from page 13)

This arrangement has proven most satisfactory, thus solving one of our most troublesome problems.

We are constantly improving our course or perhaps I had better say working on the completion of it. I have found that not only I am interested in the latter but the golfing public is enthused. It would be hard today to recognize the old nine-hole course owing to the improvements. From nine holes without a water system six years ago that was not paying operating expenses, we have today an eighteen-hole course having a water system of nine thousand feet of pipe, good greens, and a club house, recently completed. To prove its popularity, 21,000 people registered for play last season.

Analysis of Receipts

The receipts for the year were in round figures \$22,000. This course is semi-public as a membership is provided for local residents. Of the total amount collected 50 per cent was paid by non-resident guests who



Float used in parade on "Highland Park Day"

represented 31 per cent of the total registration. Of the remaining 69 per cent of the registration, 65 per cent of whom were members, paid \$6500.00. 35 per cent were local residents who paid green fees at half the

(Continued on page 42)

HUBBARD CREEPING BENT NURSERIES

Washington and Metropolitan Strains
for Lawns and Golf Courses

Pure, free of weeds, and of
one season's growth

Dr. Amos F. Hubbard, Ashtabula, O.