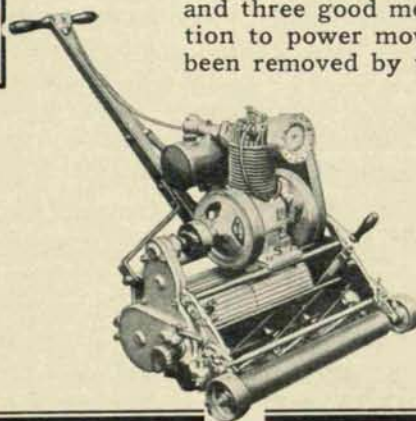


Jacobsen Creeping Bent Power Putting & Green Mowers



Features of the New 19-Inch and 24-Inch Models

1. Will produce a finer cut than any "push type" mower.
2. Positively will not pack your greens. All major castings made of the same special grade of aluminum as used in aeroplane construction, combining great strength with extreme lightness.
3. Any boy can operate them without fatigue; makes your help happy and contented.
4. Will cut your cost of greens-mowing 50% to 75% resulting in surprising savings.



DEMONSTRATIONS of these new mowers the past year on prominent courses from Coast to Coast and before the United States Greens Association at Washington, D. C., have assured their reception as a distinct triumph on the part of Jacobsen Engineers—a tribute to Jacobsen experience and skill as builders of quality power mowers.

Their ability to do beautiful work on any green has been thoroughly proven, over any undulations that a hand mower will handle, and of course, with a marked saving in time and labor. They do the work of two and three good men with hand mowers. Every objection to power mowers on the ultra modern green has been removed by these new models.

Line up your new equipment now before the season is on. Let a Jacobsen Representative bring a movie projector to your office and show you how Jacobsen Mowers perform—convincing visible evidence. There is no obligation. Write for literature and names of users.

Jacobsen Mfg. Co.

Golf Dept. A-2, Racine, Wisconsin
New York Office: 245 W. 55th St.

Golf Course Drainage

(Continued from page 21)

tain portion of it is held so intimately that the small roots cannot draw it from the soil.

Capillary Moisture and Drainage:—Capillary moisture has no direct relation to underdrainage though it has a very definite and important bearing upon the results and effects of drainage. When the plane of saturation is lowered by the use of underdrains the moisture necessary for grass production must be supplied by capillarity.

Hygroscopic Moisture:—This is the least important of

the three forms of soil moisture and in amount it is relatively very small. It is the moisture which condenses from the air onto the soil grains, the condensation taking place either at the surface or in the soil, if it be so open as to allow of free circulation of air.

(Each of the articles by Mr. Miller which will appear in following issues will specialize on a phase of soil drainage, including a discussion on the benefits of drainage, determining where drainage is needed, the design of tile drainage systems, the mechanics of drainage installation, and the construction of drainage accessories.)

Test Your Grass Seed!

"Know Before You Sow"

Complete purity and germination reports made on all classes of seeds.

Write for special booklet about our service.

International Seed Testing Laboratories

11 Park Place NEW YORK CITY

Members
Association of Commercial Seed Analysts of North America

FELLOW MEMBER

Have You Invited The
Chairman Of Your Green Committee
To Attend Your
ANNUAL CONVENTION
FEBRUARY 21-25?

Read Pages 18-19 This Issue



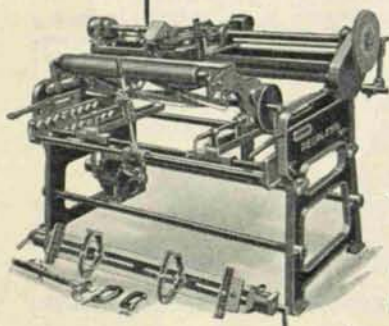
Small Clubs and Large Clubs

ARE saving time and money by using the Peerless Lawnmower Sharpener. It sharpens all makes of cutting units scientifically—quickly—accurately—does the work as nothing else can. Grinds a perfect bevel and clearance—blades cut like a new pair of shears. No more hard running mowers—no more pulling and tearing of turf. Operated by a 1-3 H. P. Motor—attach it to your lamp socket. Special Grinding Wheel for sharpening grass shears, sickles, scythes, axes, etc. Skate Sharpener Attachment included—sharpens all makes of skates. Will pay for itself the first season. Hundreds of Golf Clubs, large and small use the Peerless.

We will exhibit at the International Golf Show, Hotel Sherman, Chicago, March 12-17, 1928.

French
Lick
Springs
Hotel Co.

"One of
our
users"



Write for Catalog and
list of users.

The Fate-Root-Heath Co.

825 Riggs Ave.
Plymouth, Ohio

The Peerless
Lawnmower
Sharpener

Keep
weeds
out of
Golf
—
Sow
Scott's
Seed



We'll Be There!

Come to the Greenkeeper's Golf Show at Detroit prepared to learn more about Scott's Seed and the reasons for its preference by 20% of all the clubs in America. Please call at our booth and get acquainted.

O. M. SCOTT & SONS CO.
Marysville, Ohio

From Local Viewpoint

(Continued from page 15)

Michigan Greenkeepers Prepare For Convention

AT the Redford Country Club, the members of the Michigan and Border Cities Greenkeepers' Association turned out in full force to lay their plans for entertaining the National Association of Greenkeepers of America during annual convention week.

Herbert E. Shave, president, called the meeting to order, and asked every member to put forward his best efforts toward making the convention a huge success. He then appointed a Men's Entertainment committee consisting of William Smith, chairman, John Gray, H. F. Godwin, James Dolsen, Hugh Ross and Reuben J. Scott.

This committee was instructed to make arrangements for a banquet to be held on Friday evening, February 24 at the Hotel Fort Shelby, Detroit.

A Ladies' Entertainment committee was then appointed, consisting of Mrs. William Smith, chairman, Mrs. Gray, Mrs. Scott and Mrs. Henry.

After the meeting, a game of golf was enjoyed by the members. Leo Wedyke of the Country Club of Detroit won low net carrying a prize of a leather golf bag. William Smith won 2nd prize, a golf club, E. W. Poynter and L. B. Henry receiving 3rd and 4th prizes.

The Detroit greenkeepers play golf at nearly all their out-door meetings during the playing season, discussing the various greenkeeping problems on each course as they go around. H. F. Godwin, greenkeeper at Redford, has had several years' experience with bent stolons, and his course shows the benefit of the knowledge he has accumulated about this grass. Redford is conceded to be one of the finest courses in the Detroit district.

Greenkeepers Please Note

Fraser's International Golf Year Book

is the only publication containing a complete list of Greenkeepers.

A complete buying guide.

This 500 page book answers everything about golf.

Get your own copy—price \$2.50.

Address either Office:

U. S. A. Head Office

55 W. 42nd St.,
New York City.

Compilation Office

1070 Bleury St.,
Montreal, Canada.

A hundred-page supplement containing all Ads. costs you only your name and address.

The most used golf publication in the world.



Tractor Wheel Spuds

The R. H. square shouldered spuds save time installing and removing, cost less, are stronger, last longer. Made to fit any type tractor.

Sample spud and circular on request. Advise make of tractor used. (If your dealer cannot supply, write direct).

R. S. Horner

Manufacturer of Wheel Spuds,
R. H. Fairway Tractor
Geneva, O.

Loeffler, McGlynn Company

Golf Course Architects and Advisers

OAKMONT, PENNSYLVANIA



Courses Built or Remodeled

Alcoma Country Club
Ambridge Country Club
Butler Country Club
Chartiers Heights Country Club
Beaver Valley Country Club
Ellwood City Country Club
Edgewood Country Club
Greene County Country Club
Hillcrest Country Club
Highland Country Club
Huntingdon Valley Country Club
Hannastown Country Club
Kittanning Country Club



Montour Heights Country Club
Monongahela City Country Club
Nemacolin Country Club
Oakmont Country Club
Pittsburgh Country Club
Pleasant Valley Country Club
Pittsburgh Field Club
Red Run Country Club
Shannopin Country Club
Uniontown Country Club
Westmoreland Country Club
Wildwood Country Club
Willow Springs Golf Club
Wykagyl Country Club



— Emil Loeffler has been associated with the Oakmont Country Club for the past fifteen years —

THE PERFECT PUTTING GREEN SPRINKLER
COVERS GREATER AREA
THAN ANY OTHER TYPE



**THE GEARLESS
GOLF KING No. 6**

After 15 years of pioneering golf course irrigation, we are ready to "stand pat" and stake our reputation on this machine with only one moving part, yet covering greater area than any other sprinkler.

Mr. W. P. Bell, the famous California architect, writes:—"CONGRATULATIONS, YOU HAVE NOW SOLVED THE BIG GOLF COURSE PROBLEM."

Mr. William Watson, nationally known architect, writes:—"YOU HAVE NOW GIVEN US THE ANSWER TO THE GREENKEEPER'S PRAYER."

Agent wanted in each golfing district.

BUCKNER MANUFACTURING CO.
FRESNO, CALIFORNIA

Since 1875

TESTED Radway's SEEDS

We have on spot new crop

CHEWINGS FESCUE N. Z.

BENT GRASS SO. GERMAN

BLUE GRASS — RED TOP — WHITE CLOVER

Ask for Sample Offers

I. L. RADWANER SEED CO., Inc.
11 WATER STREET NEW YORK
Phone Bowling Green 3373
Seed Importers and Refiners

**The Best Greenkeeper
In The World**

Cannot maintain perfect turf unless his
course is well drained

Think It Over

WENDELL P. MILLER
Golf Course Drainage Engineer
403-5 East Broad Street Columbus, Ohio

Golf Grasses

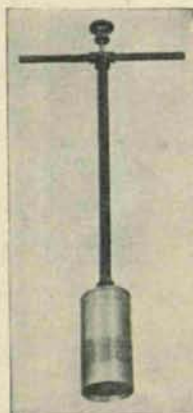
(Continued from page 7)

nothing else seems to be able to fill quite so well, and that is for rough, on the slopes of bunkers and sides of greens. The faults enumerated above makes this grass an ideal rough. It will grow on poor soil. Its dwarf habit of growth makes it economical to maintain. There is not enough to hide balls. In the Northern States it will last for many years when not cut short. Sheep's fescue, a coarser grass with a distinctly bluish cast in color, has often been recommended for this purpose. This was due largely to the fact that red fescue seed was formerly much higher in price. But since greenkeepers have generally come to the conclusion that red fescue is of little value for putting greens and much less is used than was the case a few years ago the price of the two sorts has been about the same, with red fescue sometimes selling for less than the sheep's.

Meadow Fescue

Some unscrupulous dealers have highly recommended and sold meadow fescue for fine turf purposes. One man in the West got into conflict a few years ago with the Postal authorities for selling seed of this grass under a high-sounding name. Meadow fescue is a coarse farm grass, resembling very much the rye-grasses. It has no special value for fine turf.

There are a number of other fescues sometimes listed in seedmen's catalogues such as fine-leaved fescue and hard fescue. The fine-leaved fescue usually turns out to be the same as red fescue and the hard fescue is another name for sheep's fescue.

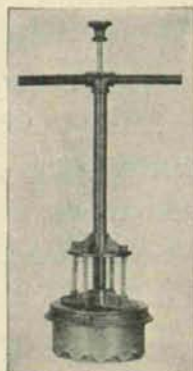


**Gem Hole
Cutter**

The one you have been looking for. Cuts clean and expels plug without scattering soil.

**Putter
Hole Cup**

Seamless steel tubing, with heavy four-bracket bridge pinned with taper steel driven pins. Finished in black lacquer.



**Hercules
Turf
Repairer**

9" cut, positively lifts cut plug without breaking sod.

Distributors of the TORO Line

Complete line of golf course supplies, wheelbarrow seeders, drag mats, bunker rakes, putting green sprinklers, hose, etc.

Write for literature

Golf Course Supply Co.

3049-51 Carnegie Ave.
Cleveland, Ohio

Mr. Greenkeeper—

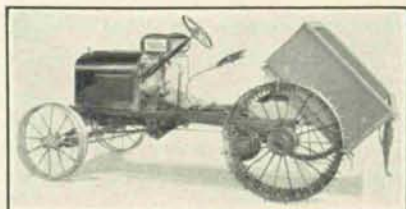
In making up your 1928 budget why not use the J. Oliver Johnson catalogue. You will find a complete list of SEEDS and EQUIPMENT, all of which is in stock and immediate shipment; no delay. Our 1928 catalogue will be ready January 15th. A postal will bring one to you. Many new items and a price reduction will be noticed. See our 20 booth exhibit at the 3rd International Golf Show in Chicago, March 12-17.

J. OLIVER JOHNSON, INC.

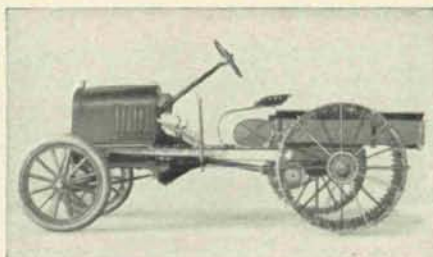
World's Largest Golf Course Equipment House

MORGAN, HURON, SUPERIOR STS.

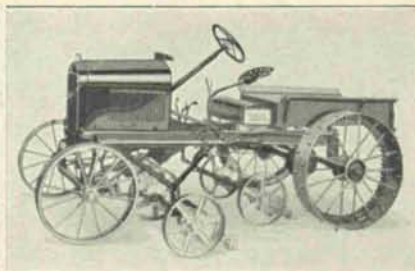
CHICAGO, ILL.



Staude Golf Course Tractor with steel dump body, capacity one cubic yard. Price only— \$495.⁰⁰



Staude Golf Course Tractor easily pulls five 30" cutting units, rollers, hay mowers, trailers, etc. Price only ————— \$420.⁰⁰



Staude Golf Course Maintenance Machine consisting of Tractor, underneath hitch, three 30" cutting units. Price only— \$695.⁰⁰

Why pay more—when more than 1,000 Golf Clubs use the Staude—It must be good—Every user a booster—Machines fully guaranteed, nothing better at any price—Write today for our prices, etc.

E. G. STAUDE MAK-A-TRACTOR CO.

2630 University Ave.

St. Paul, Minn.