

Around the Office Desk

HERE are some sentences taken from January and February letters: "Who's going to be at the convention?" "Is Emil Loeffler going to be there?" "How about Captain Rees, and Eddie Dearie, and W. D. Chinery?" "Is A. E. Lundstrom going to be with us, for I used to know him, and I'd like to see him again." "Is John MacGregor going to get all the Chicago boys out?" "If there is any dealer near me who has not sent in for a booth at the show, let me know and I'll go see him." "Who's going to help out at the Association booth, for if you haven't someone who can do it better, I'm game and you can count on me."

"Should I write to the Hotel Fort Shelby for a room reservation?" "You promised me last year at the Chicago meeting you would send me all back copies of the magazine, and I have every one you have put out; I know enough now about what you are doing so you can't keep me away from the Detroit meeting."

INQUIRIES, reservations for rooms, for space at the show which is already 90% sold out, acceptances from about 85% of the committee members appointed to work at the convention, constitute a large part of our correspondence just now. Never a day goes by that we do not receive a full quota of genial interest and wholehearted support. And the letters are not all signed by our members. Many greenkeepers who wish to attend and join at Detroit, more and more chairmen of Green committees who wish to know if they will be welcome, many of them informing us that the expenses of their greenkeeper will be paid by the club.

WE have always looked upon our office as a busy place. No day has ever been long enough. But we are just beginning to realize the difference between "a trot and a gallop" in covering the ground for the Na-

tional Association. We are always encouraged by the fact that it is a race for high stakes, the approval and appreciation of our members and their many friends. New members who are going to join at the annual convention this month will furnish the "Garrison finish." Be there and watch them come in.

SEVERAL manufacturing companies that have never been on our active list are taking show space, while most of those with whom we are acquainted reserved their booths by wire and letter the first week after contracts were mailed. The desire on the part of manufacturers and dealers to claim the attention of the greenkeeper is evidenced by the great interest they are showing in the convention. Some of our old friends who are building golf course machinery and furnishing supplies of various kinds to golf courses, have gone out of their way to interest other companies in our exhibition. The

Golf Show committee will be on hand early in the week to lend assistance on the exhibition floor.

ONE of the best voluntary contributions we have received was written by Mr. T. L. Lombard, chairman of the Green committee of the Berkshire Hills Country Club, Pittsfield, Massachusetts. Watch for it in the center of the Office Desk page next month.

MESSAGES approving our magazine are frequent. Recently Mr. John A. Root, of the Fate-Root-Heath company, Plymouth, Ohio, wrote "We have noted the high class of

editorial content of the GREENKEEPER, and feel it is a very valuable publication on golf course maintenance. You are doing a good work, and we wish you continued and unlimited success."

DID you ever stop to realize that most of the men engaged in supplying greenkeepers with material and equipment are golfers, and some of them prominent players in their local districts? Is this not the real rea-

SPRING IS NEAR— ORDER NOW!

IN your capacity as greenkeeper or Green committee chairman, you find the earlier you get your course into playing condition in the spring, the better support you get from your members.

Machinery and supplies on hand in February and March in all northern and central states will give you a head start in your endeavor to satisfy the men who pay membership fees every year in your club. Rush shipments usually indicate an oversight. They are a trial to the manufacturer, and an irritation to the club treasurer.

Seeds and fertilizers, putting green rollers, compost mixers, spreaders and brushes, flags and other small accessories, rakes, bunker drags, and small tools, these are only a few of the items which should be delivered to you before the frost is out of the ground. Tractors and mowers should be ordered for delivery when wanted, and orders for sprinklers and rubber hose should not be too long delayed.

son why they first noted the greenkeeper's needs? Many times in the past five years we have traced the invention of a piece of equipment for the improvement of golf courses back to its inspiration, and found this to be so. There are few manufacturers and dealers in the golf course field who do not play golf every time they get a chance to do so, and this includes hundreds of salesmen as well as company officials.

Commercializing an inventive genius to the end of reducing labor expense and speeding up the production of good turf is a genuine service to the greenkeeper. Indeed, frequently a new piece of equipment is written up in red ink on the books of the manufacturer for more than one season, while demonstrations, sales and advertising, and other expense necessary to introduce the item to the attention of the clubs is going on.

AFTER reading the foregoing paragraph, every greenkeeper and Green committee chairman is respectfully requested to devote their good attention to the market place pages in this issue.

* * * *

DOWN in Georgia there is a new eighteen-hole course, located on St. Simon's Island, which Hugh C. Moore is whipping into shape. Read his story in the coming March issue, after you have met him at the annual meeting.

* * * *

THE greenkeepers in and near New Britain, Connecticut, fourteen out of fifteen of whom joined the association last year in a bunch, are getting ready to attend. Some of them will be in Detroit as early as Tuesday, February 21.

* * * *

Notice to Chairmen of Green Committees

The program which will be presented at the coming annual convention of the National Association of Greenkeepers of America is of vital interest to you and to your greenkeeper.

You are cordially invited to attend the meetings of February 23 and 24 at the Hotel Fort Shelby, Detroit.

Local Associations Hold Fruitful Meetings

LOCAL groups of greenkeepers in many sections of the country are making arrangements to attend the convention this month at Detroit. Encouraging reports of "We'll be there" have been received, and in several instances this applies to practically the whole membership.

* * * *

Re-elect Officers of Western Pennsylvania

THE splendid work which has been done by the 1927 officers of the Greenkeeper's Club of Western Pennsylvania culminated in their re-election for 1928.

The father of greenkeeping in the Pittsburgh district, John Pressler, will continue to lead the flock. Mr. Pressler's course, the Allegheny Country Club, was constructed in the days when hunting was much more popular than golfing. When construction was in progress people often inquired, when looking at the tees, "What kind of hurdles are these?" How times do change.

Two new members were accepted at the January meeting, Perry Delvecchio of the Greensburg Country Club, and Frank Richardson of the Shady Side Academy Golf Club. Mr. Delvecchio is one of the best golfers of the district, and a qualified greenkeeper as well.

The association is now taking steps to increase its membership, by sending out invitations to join to greenkeepers throughout the section who are not yet affiliated.

* * * *

Cleveland Discusses Sand Traps

DESIGN, maintenance and drainage of sand traps was the subject presented to the Cleveland District Association of Greenkeepers by Burdette G. Sheldin, oldest local greenkeeper, in charge of the Country Club course at Bratenahl. In discussing drainage, he said:

"LET'S GO!"

Says Jacobsen Salesman

HERE is Mr. Einer Brown, representative of the Jacobsen Manufacturing Company, of Racine, Wis., starting out in his new territory through West Virginia, Virginia, Maryland and District of Columbia.

Greenkeepers and Green committee chairmen in states named can see how Jacobsen power mowers operate before grass has started to grow this spring, for he has with him a special moving picture projector showing these mowers in action.



"Water will always find its own level," said Mr. Sheldin, "and all drainage ditches, before laying tile, should be tested for high spots with a good flow of water." Mr. Sheldin advised turning a hose into the ditch, watching to see that the water flows freely the whole length. "After you have found the level of your drain," Mr. Sheldin went on, "then start to lay the tile at that outlet and follow back. If there are any laterals to lay these should be dug before the main line of tile is laid. I use sewer tile for connections."

Mr. Sheldin had considerable trouble in the early days at the Country Club, as original lines were laid with ordinary farm drain tile, but for twenty-five years the sewer tile he installed to replace it has done the work with practically no repair.

"Sand traps should be constructed with a view to economy of upkeep," said Mr. Sheldin, "and natural lines should be followed wherever possible." Tile should be laid at least eighteen inches below the surface of the trap, and covered with first a good layer of coarse cinders, and then a layer of fine cinders on top, trench filled to level and tamped. "This depth is safer in this locality," said Mr. Sheldin, "as the frost will gradually raise the tile each winter a little closer to the surface."

"Few sand traps have sufficient sand placed in them to justify the use of the word 'sand,'" said Mr. Sheldin. "I use four or five inches, and three inches on the surface is a small allowance."

The construction of sand traps was discussed at length, to the effect that in general traps should have many of the high spots taken out of the surface and placed on the face. This, it was acknowledged, would not be relished by all the playing members, but wherever possible it should be done in order to reduce the cost of maintaining the trap.

* * * *

What We Hear From Detroit

THE Entertainment committees for the annual convention, appointed from the membership of the Detroit District Greenkeepers' Association are working overtime just now completing arrangements to welcome National Association members and their wives during convention week. William Smith of Red Run, chairman of the Men's committee is ably seconded by Mrs. Smith, who is setting the wheels rolling to entertain the women. It is a close family corporation of good-will, ability and energy.

At the Detroit Golf Club, Alex McPherson finished sodding eighteen greens to bent this past fall, which is some cutting up and laying down.

One of the new courses contemplated for the outlying Detroit district will be a nine-hole course on Put-in-Bay Island. This is being sponsored by Mayor T. B. Alexander, and financed by residents of the island. We understand the first tee will be under the shadow of the famous Perry memorial.

Mowers and Mower Service at Pennsylvania

AT a recent meeting of the Philadelphia Association of Golf Course Superintendents held at the Green Valley Country Club, the matter of mowing equipment came in for considerable discussion. Quality and design, durability and service given by various makers were talked of at length.

It was decided to hold an annual elective meeting of the association in February, and submit a list of the newly elected officers to the NATIONAL GREENKEEPER for publication.

* * * *

Arkansas Valley Greenkeepers at Detroit

SEVERAL members of the new Arkansas Valley Association of Greenkeepers will be present at the convention, according to late advice from Chester Mendenhall, Wichita, president.

The temporary organization will be made permanent at an elective meeting to be held February 16, at which final arrangements will be made to send a delegation of members to Detroit for convention week. This news is particularly interesting to all National Association members. Snappy action, such as is being shown by a group of greenkeepers who were for the most part unacquainted with each other three months ago is a thing for all greenkeepers to think over.

Keeping the Greens Open in Winter

By JOHN McNAMARA, First Vice-President

ALMOST all golf clubs close off the regular summer greens and build near them temporary or winter greens for use during the winter months. The contention of many golfers is that it does not hurt the regular greens if they are played throughout the winter season.

In my experience, I have found that not only the greens but the fairways and tees suffer to a great extent if played regularly. The more playing that is done, the longer it takes in the spring of the year to bring the course up to the proper standard. The course is much more damaged if we have a mild and open winter, as in favorable weather there are quite a few more playing. My opinion is that during the soft and mild days of the early spring, all golf courses (wherever this condition exists) should be closed tight. As the greens and fairways cannot be rolled before they are fairly dry, it is very hard to get the foot-marks out that were made in the winter months. The cups cannot be changed often enough to prevent spots about them being worn out when they are left in too long.

Does it pay a club to keep the regular greens open during the winter months, taking into consideration the damage that is done? I would like to hear the opinion of greenkeepers and others on this subject.

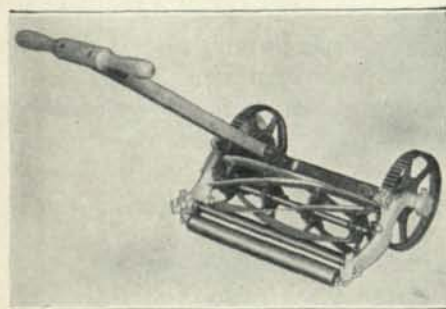
THE MARKET PLACE

Toro introduces New Hand Mower

THE Toro Manufacturing Company, Minneapolis, announce a number of new items for next year.

Among them is the Silver Flash Hand Mower which they feel will meet a strong need among the clubs for a high grade hand mower for cutting tees and approaches to greens.

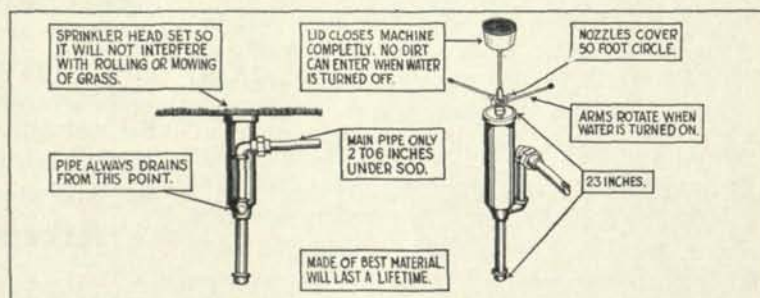
Their new mower, which they have named the Silver Flash, is accurately



The new Toro "Silver Flash" Lawn Mower

machined and fitted and is exceedingly light running and also light in weight.

It is said to be a very fine mower by those who have used it, and the Toro Company will be glad to send any one illustrations and literature.



Diagrammatic sketch of new sprinkler head, manufactured by the Dayton Irrigation Co.

New Hitch for Bulldog Mowers

THE accompanying photograph shows rather a unique hook-up of the Bulldog 3-unit gang mowers and a roller also in back of a Fordson tractor. This outfit is owned and operated by the Saltville Golf Club, Saltville, Virginia. As you will note, they have the roller mounted in back of the tractor between the two wide wheels. Then they have arranged an off-set hook-up for the gang mower at the side so that in one operation a man cuts a 72 inch swath and with his wide tractor wheels and roller, also rolls a 22 inch space at the same time.

* * * *

New Hoseless Watering System

THE Dayton Irrigation Company of Dayton, Ohio, is speeding up production on their large under-

ground sprinkler head to which they have added a new feature of growing sod in a cup mounted on the top or lid of the sprinkler head, a new feature for golf greens.

This system can be installed on any green, old or new without spoiling it as the pipe lines are laid only about four inches below the sod line. Each sprinkler head has a positive drain and there can be no freezing of the water lines during the winter months.

It has also been designed for watering fairways.

Detailed information gladly furnished upon request.

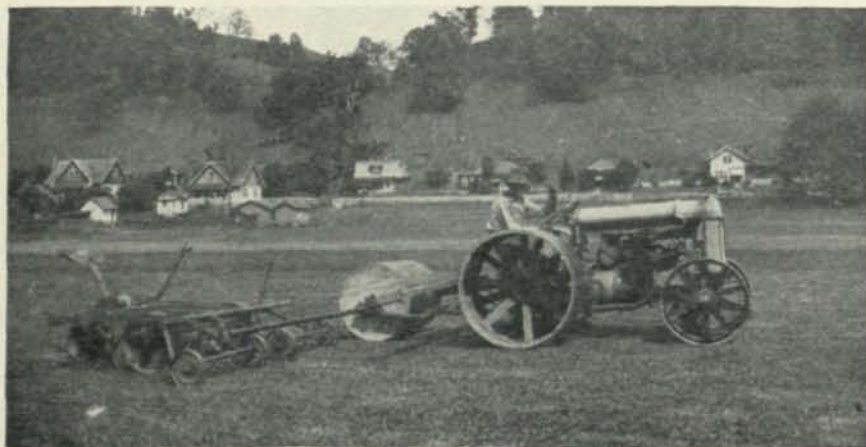
* * * *

Pebble Beach Uses Royer

JOE P. MAYO, superintendent of the Pebble Beach Country Club, Del Monte, California, sends us the accompanying photograph of a Royer compost mixer, with the following letter which describes how he connects it up on a Ford chassis:

"Am using Royer nearly every day on one of the courses. Have it mounted on Ford Chassis, and use power from engine.

"We cut the drive shaft just back of the gas tank so that belt from pulley will clear tank up to the pulley on Royer. The housing of drive shaft is cut short of where we put the bearing and held in place. The drive



Ideal mower and roller hitch described above

shaft is horizontal with universal joints, and belt has never given any trouble. We load in the side just the same as you do with the power driven one you are now selling. But being on Ford frame it is higher, and just right to load into Ford one ton truck. We lift end gate and back up to machine and pull away and close end gate."

* * * *

Economy Sprinkler in the East

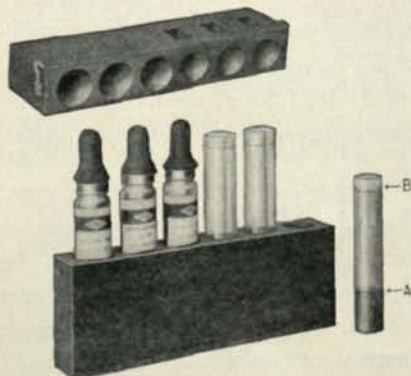
EASTERN representatives of the Economy Irrigation Company, of Seattle, Washington, covering the states of New York, Vermont, New Hampshire, Maine, Massachusetts, Connecticut and Delaware with the eastern portion of Pennsylvania, will be Mr. O. O. Clapper of the New England Toro Co., Newton, Mass. Mr. W. E. Lafkin of the New York Toro, and Mr. T. L. Gustin of the Philadelphia Toro.

Arrangements have been made with these three firms to interest golf clubs in the Economy Travelling Sprinkler and other models manufactured by this company.

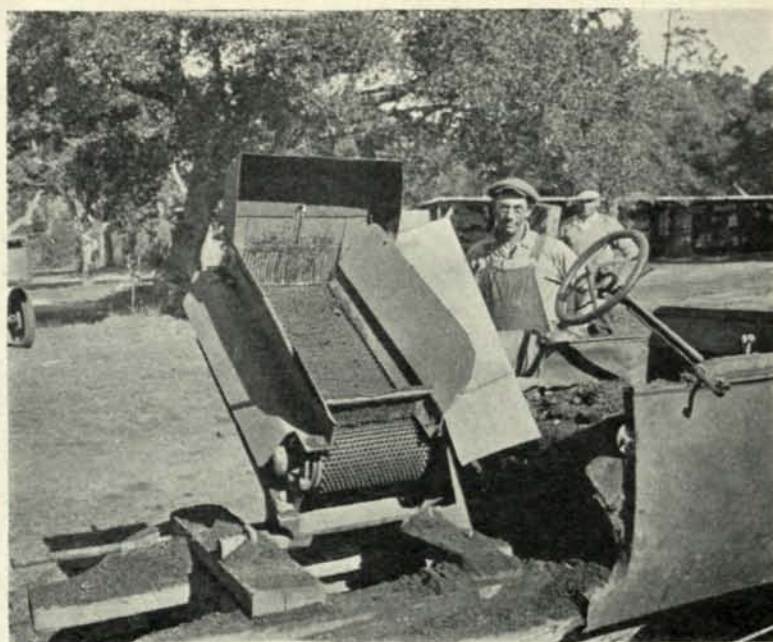
* * * *

Testing Soil Reactions

IN order that the test for acidity and alkalinity of the soil may be made by the greenkeeper, the LaMotte Chemical Products Company, of Baltimore, Md., has placed on the market two sets, the LaMotte-Morgan Soil Testing Set and the LaMotte-Kenny Indicator Field Set.



The Kenney Indicating set for soil testing which will be demonstrated at Detroit convention



Royer Compost Mixer mounted on Ford chassis, in use at Pebble Beach Country Club, Del Monte, Cal.

Both of these sets are extremely simple in operation and enable a worker to determine in a few minutes for just what plants his soil is suited, or what treatment is necessary for changing the reaction to suit the plants which he wishes to grow.

One of the most important parts of each set is a pamphlet which gives a list of all the common plants, with their soil reactions, that is the acidities or alkalinities at which they thrive best, and also full instructions for changing the reaction of the soil to any desired degree.

* * * *

Littleford Compost Screen

THE accompanying photograph shows a compost screen manufactured by Littleford Bros. of Cincinnati, Ohio.

The screen has a rated capacity of fifteen cubic yards per day and is free from complicated parts. Screening cylinder is 26 inches in diameter by 60 inches long and is arranged so that wire screen can easily be replaced when worn out. Heavy cast iron fly-wheel insures constant motion.

While the standard screen is hand operated pulleys are furnished when

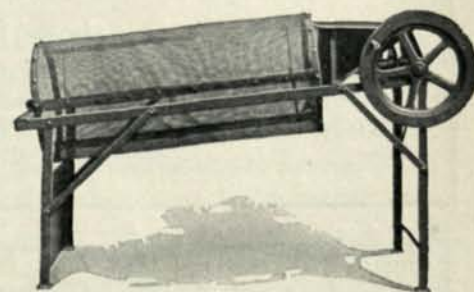
it is desirable to use mechanical power.

Littleford Bros. will be glad to furnish full details to anyone interested.

* * * *

New Tee Marker

JUST before this magazine went to press, a new tee marker was laid on our desk for inspection. It is of heavy vitreous enamel, round

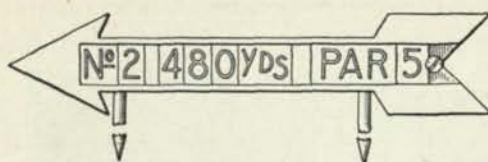


Littleford compost screen described herewith

in shape, with black background, and white letters, and makes a very attractive appearance.

This marker is called the "Luster-lite," and is manufactured by the Chicago Vitreous Enamel Product Company, at Cicero, Illinois. A folder describing it will be mailed upon request.

JOHNSON'S TEE ARROW



The figures in this arrow are removable, can be changed at any time by addition of extra figures.

Cast iron arrow 14" long, baked white enamel. Figures are raised with black faces. Sets at an angle with turf, easily read.

Price Complete\$2.50 pair
Extra Figures15 each

Be sure and give Hole, Yardage and Par in ordering.

Visit Our

20 Booth Exhibit

3rd International

Golf Show

Hotel Sherman

Chicago

March 12-17

JOHNSON'S BALL RACK



Balls placed in upper end roll to lower end indicating order of teeing off.

Has slot to show position of ball. Baked enamel finish.

Price\$15.00

Ask for our 1928 Golf Course Equipment Catalog

Contains full information on construction and maintenance equipment

J. OLIVER JOHNSON, Inc.

World's Largest Golf Course Equipment House

Morgan, Huron, Superior Sts.

Chicago, Ill.

Test Your Grass Seed!

"Know Before You Sow"

Complete purity and germination reports made on all classes of seeds.

Write for special booklet about our service.

International Seed Testing Laboratories

E. E. Pattison, Director J. M. Stanton, Asst. Director
11 Park Place NEW YORK CITY

Members
Association of Commercial Seed Analysts of North America

Bermuda Fairways

(Continued from page 12)

this part of the country as the seed germinates very slowly. Weeds and crab grass will appear far ahead of the young Bermuda grass, therefore making a very bad weeding problem. Bermuda grass roots should be planted in the spring about May fifteenth to June fifteenth, this seeming to be about the best time. The ground should be prepared about the same as for planting other varieties of grasses. I prefer planting the roots in parallel trenches two to three inches deep and spaced twelve to fourteen inches apart. The roots should be laid in these trenches end to end and covered with soil. After planting the ground should be thoroughly watered and kept wet for several days until new shoots of grass begin to show through the ground. The reason for planting in parallel trenches is to make cultivation and weeding easier later.

Keep Weeds Out of New Plantings

Bermuda grass should receive constant care until the ground is completely grassed over, as Bermuda will not successfully compete with crab grass and other weeds until it becomes thoroughly established. After Bermuda grass has once become thoroughly established and the ground entirely covered nothing can compete with it.

(Continued on page 28)

30 IN. FAIRWAY MOWER

Prices marked show retail and wholesale costs for past 6 years. We now offer you wholesale prices because we proved last year that true wholesale dealings with Golf Clubs showed minimum selling costs, tremendous sales increase and most profit to all.

NATIONAL MOWER CO.

2418 University Ave. Minneapolis, Minn.

The finest type Fairway Mower built with double sets of tempered steel cut gears in oil tight cases.

Write for literature.

66 IN. TRIPLEX

Prices marked show retail and wholesale costs for past 6 years. We now offer you wholesale prices because we proved last year that true wholesale dealings with Golf Clubs showed minimum selling costs, tremendous sales increase and most profit to all.

NATIONAL MOWER CO.

2418 University Ave. Minneapolis, Minn.

The finest type Fairway Mower built with double sets of tempered steel cut gears in oil tight cases.

Write for literature.

42 IN.

Prices marked show retail and wholesale costs for past 6 years. We now offer you wholesale prices because we proved last year that true wholesale dealings with Golf Clubs showed minimum selling costs, tremendous sales increase and most profit to all.

NATIONAL MOWER CO.

2418 University Ave. Minneapolis, Minn.

The finest type Fairway Mower built with double sets of tempered steel cut gears in oil tight cases.

Write for literature.



CHARLES ERICKSON

Golf course architect, inventor of practical golf course equipment, and for 27 years superintendent of the course of the Minikahda Club.

MINIKAHDA'S GREENS

Smooth as a Champion's Play
Kept free from Brown Patch
with SEMESAN



MINIKAHDA staged two great championships—the National Open in 1916 and the National Amateur last August. The condition of the greens and fairways in these and other tournaments was widely praised by the players.

Charles Erickson, superintendent of the course, believes in prevention and eternal vigilance. He says:

"Greens must be at their best for championship play. Here at Minikahda this is brought about by selecting the best equipment, fertilizers, seed, and brown patch preventive available. If a green shows signs of

brown patch we apply **Semesan** immediately. A rapid recovery to a normal, healthy green is always experienced after treatment."

(Signed) CHARLES ERICKSON

The Famous Ninth Green of Minikahda Club

The scene of the present Champion's dramatic play in the final round of the 1927 Amateur Tournament. One of America's greatest sport writers pays tribute to the heroic effort in the following words:

"His most spectacular effort came at the 520 yard, dog-legged, uphill ninth where, after a terrific drive, his spoon shot stopped about 20 inches from the cup for an eagle 3."

Championships are matters of "form" for the course as well as the players. Brown patch need no longer to be dreaded. A simple spray or drench treatment kills the fungus in even the worst brown patch weather. Have you our latest Brown Patch Booklet? Write for your copy now! E. I. du Pont de Nemours & Co., Inc., Dyestuffs Dept., Wilmington, Delaware.

We will exhibit at the International Golf Show, Hotel Sherman, Chicago, March 12th to 17th, and the Greenskeepers' Golf Show at Hotel Fort Shelby, Detroit, February 21st to 25th.



SEMESAN

Makes Seeds Healthy

Used Wherever Championships are Played

Say you saw the ad in *The National Greenkeeper*

FAIRWAY WATER HOSE

is a strong—dependable water carrier, with an appearance which adds impressions of affluence.

Fairway has a strong flexible body, one which may be twisted, but, won't kink or break.

The handsome brown tube and cover are made of live rubber which will not peel or crack as the result of direct rays of the sun.

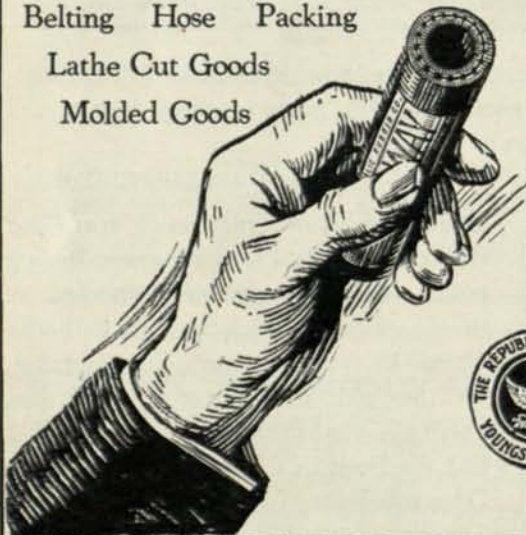
The cream white label, to which may be added the name of the club, gives the finishing touch of quality.

Fairway is an asset to any club or estate.

For a sample and prices, use the coupon below.

THE REPUBLIC RUBBER CO. Youngstown, Ohio

Belting Hose Packing
Lathe Cut Goods
Molded Goods



THE REPUBLIC RUBBER CO.
Youngstown, Ohio

Gentlemen:

Please send facts and figures on Fairway Hose.

Name

Address

City..... State.....

Greenkeepers Please Note Fraser's International Golf Year Book

is the only publication containing a complete list of Greenkeepers.

A complete buying guide.

This 500 page book answers everything about golf.

Get your own copy—price \$2.50.

Address either Office:

U. S. A. Head Office

55 W. 42nd St.,

New York City.

Compilation Office

1070 Bleury St.,

Montreal, Canada.

A hundred-page supplement containing all Ads. costs you only your name and address.

The most used golf publication in the world.

Bermuda Fairways

(Continued from page 26)

Bermuda should be kept clipped fairly close and should be watered frequently during the hot dry weather.

A great many seem to think that Bermuda does not need fertilization, but I find it does best in good rich soils with plenty of fertilizer.

I topdress this grass in the spring and again in late summer or early fall with a compost of one-third well rotted manure, one-third sharp sand and one-third good top soil.

The principal objections to Bermuda grass is that it turns dead and brown at the first heavy frost, and does not green up until late in the spring, that it is rather hard to mow and it creeps in every shrub and flower bed by its underground roots.

Southern Greenkeepers, Speak Up!

As I have said before my experience with Bermuda grass has been confined to fairways, tees and lawns. I would like to read something in the NATIONAL GREENKEEPER on Bermuda grass greens, written by one of our Southern members who has been successful in planting and maintaining them.

LIVESTOCK MANURE IN CARLOAD LOTS

\$1.50 per ton

Special freight rates quoted upon request

E. A. MURPHY, Jr.

P. O. Box 2906
CLEVELAND OHIO



Delivered
prices
quoted on
request

Dept. G THE E. BIGLOW CO. New London, O.



Golf Down to Date

Distinguish your course with LUSTERLITE Tee Markers. They are intensely practical; a new idea highly appreciated by discriminating golfers which does away with the bothersome method of lettering tee boxes annually.

These markers, made with lustrous white lettering on black vitreous enamel, cast-iron, are highly visible; always clean, rust and weather-proof, and attractive. Made especially to conform with the distances and pars on your particular course.

Do Double Duty As yardage indicators the LUSTERLITE Tee Markers are of two-fold use. They are already considered indispensable on hundreds of courses, and pay for themselves in a season.

Write for circular giving complete information.

LUSTERLITE Tee Markers

Address The Manufacturers

CHICAGO VITREOUS ENAMEL PRODUCT CO.

CICERO, ILLINOIS

A Tribute from Teterboro Golf Club and Flying Field

During my recent interesting visit to your laboratory when I was shown in detail your careful method of cleaning and testing golf grass seeds for purity and germination, the impression was then created in my mind that you were making a serious business of supplying first quality grass seed at all times.

Since my visit to you I have used large quantities of your grass seed with gratifying results. The greens at Teterboro Golf Club though less than two years old, seeded with your German Bent and Redtop are uniformly free of foreign grasses and have brought forth many expressions of praise from the Members and visiting Greenskeepers. When you find a Greenskeeper envying your greens, you've got something.

Sincerely yours,
C. B. Reed, General Manager
Teterboro Golf Club and
Flying Field.

The Philadelphia Seed Co.
Grass Seed Specialists

103-105 Arch St.

Philadelphia, Pa.

Loeffler, McGlynn Company

Golf Course Architects and Advisers

OAKMONT, PENNSYLVANIA



Courses Built or Remodeled

Alcoma Country Club	Monongahela City Country Club
Ambridge Country Club	Nemacolin Country Club
Butler Country Club	Oakmont Country Club
Chartiers Heights Country Club	Pittsburgh Country Club
Beaver Valley Country Club	Pleasant Valley Country Club
Ellwood City Country Club	Pittsburgh Field Club
Edgewood Country Club	Red Run Country Club
Greene County Country Club	Shannopin Country Club
Hillcrest Country Club	Uniontown Country Club
Highland Country Club	Westmoreland Country Club
Huntingdon Valley Country Club	Willow Springs Golf Club
Hannastown Country Club	Wykagyl Country Club
Kittanning Country Club	Wildwood Country Club
Montour Hts. Country Club	

Emil Loeffler has been associated with the Oakmont Country Club for the past fifteen years.

The A B C of Turf Culture

To be published in Book Form

THIS remarkable series of articles on the growing of turf grasses for golf courses which has been appearing exclusively in the NATIONAL GREENKEEPER since last January will soon be published in book form.

Every greenkeeper and Green committee chairman will want to have this book, because it is the most practical and complete treatise on turf culture ever written.

The author combines a university education on this intricate subject with an intensely practical experience in golf course maintenance work throughout the United States. In fact, Mr. Noer has visited more golf courses and is personally acquainted with more greenkeepers than any other expert in his line.

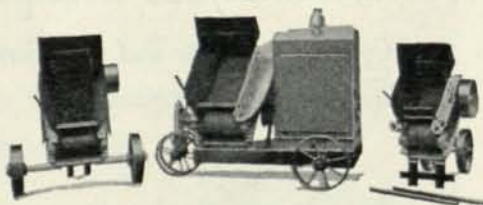
The first edition of the ABC of Turf Culture will be limited. If you want a copy reserved for you write the NATIONAL GREENKEEPER, 405 Caxton Building, NOW and say so. The book will be issued some time in February and orders will be filled in rotation as they are received in advance. The price will probably be \$3.00 a copy.

Send in your order today,—but *don't send any money*. You will be notified when the book is ready for mailing.

THE NATIONAL GREENKEEPER, Inc.

Caxton Bldg., Cleveland, Ohio

Royer Compost Mixers



"A Model For Every Need"

What a Royer User Says:

Redford Country Club
Detroit, Michigan
January 3, 1928

In reply to your inquiry regarding the efficiency and economy of the Royer Compost Mixer, have had one for the past three years, and have run one to two thousand yards through it a year. It is the most effective machine I know of for fining up soil and compost.

(Signed) Hiram F. Godwin,
Greenkeeper.

**Save money for your Club
Make Better Compost**

L. F. MITTEN

820 Miners Bank Building
WILKES-BARRE, PA.

A Chat With Our President

(Continued from page 12)

this off and you have twenty-nine days left. Now, Pat, you are allowed one and one-half hours off for meals, which totals in a year, twenty-eight days. Take this off and you have one day left. I always give you Saint Patrick's day off, so I ask you, Pat, if you are entitled to a raise?"

Pat scratched his head in puzzlement, then asked, "Well, what the devil have I been doin', thin?"

MACK BURKE, formerly of Scioto Country Club, Columbus, Ohio, now superintending the building of a new course at Canton, Ohio, was a recent visitor at

Since 1875

TESTED Radway's SEEDS

We have on spot new crop

CHEWINGS FESCUE N. Z.

BENT GRASS SO. GERMAN

BLUE GRASS — RED TOP — WHITE CLOVER

Ask for Sample Offers

I. L. RADWANER SEED CO., Inc.

11 WATER STREET

NEW YORK

Phone Bowling Green 3373

Seed Importers and Refiners