

## Buffalo Show Announced

Fred A. Burkhardt, chairman of the show committee of the N. A. G. A., visited Buffalo recently in company with President John Morley and completed arrangements for the Second Annual National Greenkeepers' Show, to be held in the big ballroom and foyer of the new Hotel Statler, February 13-16, 1929. The total floor space available is about 11,000 square feet which is three times as much space as the committee had at Detroit last February. This extra space will permit the exhibition of complete fairway mowing units and sprayers, in fact every article of golf course equipment used in construction and maintenance work.

The Show room is immediately off the main lobby of the hotel and because of its size and accessibility is splendidly adapted for a Golf Show. Mr. Burkhardt states that the committee will not increase the price of space over last year and promises exhibitors the same efficient management as at Detroit. In addition to the chairman, the show committee of the N. A. G. A. consists of John MacGregor, Chicago; John Morley, Youngstown; Emil Loeffler, Pittsburgh; Al. Schardt, Buffalo; David L. Rees, New York, and Lewis M. Evans, Philadelphia. For further information address Fred A. Burkhardt, 405 Caxton Building, Cleveland, Ohio.

---

### Watch Your Step, Greenkeepers!

I have been a Green committee chairman for several years and am greatly interested in the educational movement which you greenkeepers have undertaken.

Naturally in my travels about the country I meet and talk with many golfers and am keenly alert to their attitude regarding your association.

Frankly speaking there are unmistakable signs of wolves in sheep's clothing who are surreptitiously endeavoring by suggestion and innuendo to split asunder the National Association of Greenkeepers of America.

Every slight difference of opinion is dwelt upon and magnified; the precepts of the organization are picked to pieces; the moral fibre of one of the greatest movements for the good of golf the world has ever seen is being undermined.

Needless to say the motives of the meddlers are selfish. Their work is so subtle—it is almost impossible to put your finger on them. They appear in the guise of friends, but they are giving false advice.

Whether you believe it or not greenkeepers, you are in danger. Many an ambush is being prepared for you.

United you will stand; divided—God help you.

For your own sake forget your petty differences. Stop bickering about inconsequential things and stand together for the big objective you have begun and have faith in each other.

On this program you will win, and the great army of golfers who pay the bills will back you to the limit.

*A GOLFER WHO BELIEVES IN YOU*

### Philadelphia Superintendents Meet

The regular monthly meeting of the Philadelphia Association of Golf Course Superintendents was held at the new Huntingdon Valley Country Club, on Monday, July 9, 1928. The day was very hot and sultry and golf for those of our members who indulge, was not a pleasure, but real work.

This course is in its second year and is in very good shape, considering some of the disadvantages of its layout. Mr. James Comito should be commended for his excellent supervision of this difficult course.

During the course of the afternoon the Pennsylvania Lawn Mower Co. gave demonstration of their fairway and green mower, under the direction of Mr. Harold Braun. Also, the Townsend Co. presented their new putting green mower of ten blades.

The meeting was called to order at 7:30 p. m. with President Evans presiding. Mr. Evans, who is incidentally treasurer of the National Greenkeepers Association, discussed their proposed meeting at Buffalo, also the exhibition of golf course equipment in connection with it.

Doctor Beale, a member of the Green committee of the entertaining club next asked for constructive criticism of his course. Mr. Keable, the club manager, took us on a personally conducted tour of their spacious club house, which is very elaborately and completely furnished in all departments.

It was voted to hold the Annual Picnic on Monday, August 20, 1928, at Forest Park, Chalfont, Pa., providing proper arrangements would be made with the owners of the park.

It was moved and seconded, that the expenses of the picnic be absorbed by our Treasury.

Meeting adjourned about 9:00 p. m.

(Signed) E. T. Young, Secretary.



## Do you buy Grass Seeds by Sample or Price?

Let us quote you on your  
Fall Seeding, with Samples

**Henry A. Dreer**  
*Seeds, Plants, Bulbs*

1366 Spring Garden St.

Philadelphia, Pa.

ESTABLISHED 1838

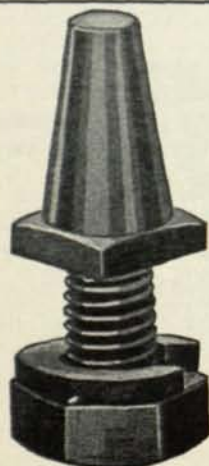
## Olympia Fields

(Concluded from Page 9)

of sand. Those about the greens were far enough away to permit a confident shot out and at no time did I see any really bad bunker play. Great credit is due the greenkeeping crew for keeping the bunkers in such fine shape.

On many of the holes in the woods with menacing creeks and tree-bordered fairways few bunkers were needed. For instance on Number 12, three hundred and eighty yards long, there isn't an artificial hazard from the tee to the green. But I saw one good player take a nine so you can imagine how much trouble Nature bestowed on that hole.

All in all Olympia Fields is a testing championship course from the back tees. Give it three or four years to age up and to attain those little refinements that one sees on the older courses in the east and it will rank with anything in this country both from a scenic and a playing standpoint.



### TRACTOR SPUDS

The R. H. wheel spuds have a square shoulder, easy to install or remove, club managers are pleased with long-life of these spuds. Made in many sizes to fit any type of tractor, and soil conditions.

Sample spud and circular on request. (Advise make of tractors used).

**R. S. HORNER - Geneva, O.**

*Manufacturer*

Mfg. of wheel spuds, golf wheels for Ford trucks and tractors

(If your dealer cannot supply, write direct).

## The Peerless Mower Sharpener

**Saves Time and Money for Any Club**

The Peerless Mower Sharpener grinds all makes of power, horse and hand mowers in 20 to 30 minutes, with razor-like edge, giving any desired clearance or bevel. Mowers run easier, less power required, hence more speed. One owner reports they have dispensed with one man. Another writes: "The Peerless Sharpener saves us \$700 to \$800 annually."



Write for catalog and list of users

**The Fate-Root-Heath Co.**

825 Bell St.  
Plymouth O.

## Mid-West Greenkeepers Meet

**T**HE Mid-West Greenkeepers Association held its first outdoor meeting of the season of 1928 July 9 at Beverly Country Club.

About 35 greenkeepers were guests of Matt Bezeck, greenkeeper of Beverly Country Club, who was highly complimented upon the condition of his course. The opinion was expressed that it is one of the leading courses in the district both in lay-out and condition. A survey of the links was found quite interesting and enjoyable.

After a luncheon served through the generosity of the Beverly Country Club, the business meeting was called to order by President John MacGregor. The question of accepting new members was discussed. It was decided that all applications should have the signatures of two members in good standing and should be approved by the membership committee.

Demonstration Day at Sunset Valley Golf Club was discussed and Secretary Edward B. Dearie was requested to write letters of thanks to the members of the committee on arrangements which consisted of Ed. M. Laing of Sunset Valley Golf Club; Peter Stewart, Lake Shore Country Club; Fred Sherwood, Northmoor Country Club; and Alex Pirie, Old Elm Country Club.

## Know Before You Sow

**Seed Selection** We will select your Seed.

**Certification** We will certify the Purity and Germination.

**Checking** We will check your actual deliveries before you sow.

Write for particulars

**International  
Seed Testing Laboratories, Inc.**

E. E. Pattison, Director J. M. Stanton, Asst. Director

11 Park Place NEW YORK CITY

Member  
Association of Commercial Seed Analysts of North America



# Market Place and Buyers' Guide

Where reputable manufacturers and dealers list and describe their products. Greenkeepers are requested to write the Market Place for any special information they desire about supplies or equipment

## Ball Washers

J. Oliver Johnson, Inc.  
Stumpp & Walter Co.

## Bent Stolons

Hubbard Nurseries  
O. M. Scott & Sons Co.  
Lyman Carrier, Inc.  
Stumpp & Walter Co.

## Brown-Patch Control

E. I. Du Pont de Nemours & Co.  
Bayer Company, Inc.

## Brown-Patch Disinfectants

E. I. Du Pont de Nemours & Co.  
Bayer Company, Inc.

## Compost Distributors

MacGregor Compost Distributor Co.  
Toro Mfg. Company  
Stumpp & Walter Co.

## Compost Mixers

L. F. Mitten  
Toro Mfg. Company

## Drainage Engineers

Wendell P. Miller and Associates

## Drain Tile

The E. Biglow Co.

## Dump Carts

Toro Mfg. Company  
Stumpp & Walter Company

## Fairway Rollers

Toro Mfg. Company

## Fertilizers

Milwaukee Sewerage Commission  
E. I. Du Pont de Nemours & Co.  
Stumpp & Walter Company  
Golf Course Supply Company  
J. Oliver Johnson, Inc.  
Lyman Carrier, Inc.  
Bestivall Mfg. Co.

## Fairway Mowers

Pennsylvania Lawn Mower Works  
Toro Mfg. Company  
E. G. Staude, Mak-A-Tractor Co.

## Flags and Poles

J. Oliver Johnson, Inc.  
Stumpp & Walter Company

## Flexible Steel Mats

J. Oliver Johnson, Inc.  
Stumpp & Walter Co.

## Greens Mowers

Pennsylvania Lawn Mower Works  
Toro Mfg. Company  
Golf Course Supply Co.

## ADVERTISER'S INDEX

|  |               |
|--|---------------|
| ABC of Turf Culture.....                     | Back Cover    |
| Bayer Company.....                           | 11            |
| Bestivall Mfg. Company.....                  | 15            |
| Biglow Company.....                          | 34            |
| Buckner Mfg. Company.....                    | 18            |
| Carrier, Lyman, Inc.....                     | Outside Cover |
| Dreer, Henry A.....                          | 32            |
| Du Pont de Nemours, E. I., & Co.....         | 4             |
| Fate-Root-Heath Co.....                      | 32            |
| Fraser's International Year Book.....        | 20            |
| Golf Course Supply Company.....              | 26            |
| Henderson, Peter & Co.....                   | 16            |
| Horner, R. S.....                            | 32            |
| Hubbard Nurseries.....                       | 28            |
| Hyper-Humus Co.....                          | 34            |
| International Seed Testing Laboratories..... | 32            |
| Johnson, J. Oliver, Inc.....                 | Back Cover    |
| MacGregor Compost Distributor Co.....        | 24            |
| Miller, Wendell P.....                       | 23            |
| Milwaukee Sewerage Commission.....           | 16            |
| Mitten, L. F.....                            | 26            |
| Nelson, L. R. Mfg. Company.....              | 28            |
| Pennsylvania Lawn Mower Works.....           | 14            |
| Philpott Rubber Company.....                 | 25            |
| Radwaner, I. L. Seed Co.....                 | 30            |
| Reade Mfg. Co.....                           | 25            |
| Republic Rubber Co.....                      | 24            |
| Scott & Sons Co. O. M.....                   | 28            |
| Staude, E. G., Mak-A-Tractor.....            | 22            |
| Stumpp & Walter Co.....                      | 12            |
| Toro Mfg. Co.....                            | Front Cover   |

## PATRONIZE YOUR ADVERTISERS

They make this Greenkeeper's Magazine possible

## Green Roller

Stumpp & Walter Company

## Hole Cups

J. Oliver Johnson, Inc.  
Stumpp & Walter Co.  
Golf Course Supply Co.

## Horse Drawn Mowers

Pennsylvania Lawn Mower Works

## Hose

Republic Rubber Company  
Philpott Rubber Company

## Humus

Hyper-Humus Company

## Lawn Mowers

Pennsylvania Lawn Mower Works  
Toro Manufacturing Company  
Stumpp & Walter Company

## Lawn Sweepers

Stumpp & Walter Company

## Lawn Trimmers

Pennsylvania Lawn Mower Works

## Mole Traps

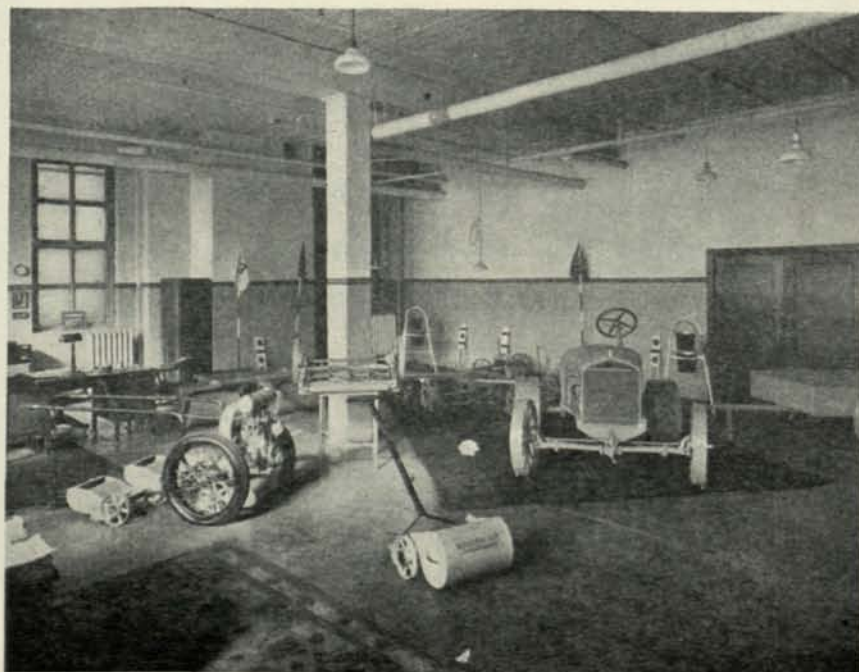
J. Oliver Johnson, Inc.  
Stumpp & Walter Company

## Mowing Equipment

E. G. Staude Mak-A-Tractor  
Toro Mfg. Company  
Pennsylvania Lawn Mower Works

## Mower Sharpeners

Fate-Root-Heath Company  
Toro Manufacturing Company



The Worthington Mower Company's showroom at 517 S. Laflin St., Chicago  
John C. Dee representative in charge is very popular with the greenkeepers of the Chicago district



### Power Mowers

Toro Mfg. Company  
Golf Course Supply Co.

### Putting Green Mowers

Toro Mfg. Company  
Pennsylvania Lawn Mower Works

### Rakes

Pennsylvania Lawn Mower Works  
Stumpp & Walter Company

### Rodenticides

The Bayer Company

### Rough Mowers

Toro Manufacturing Company

### Seed

Peter Henderson Company  
I. L. Radwaner Seed Company, Inc.  
O. M. Scott & Sons  
Lyman Carrier, Inc.  
Golf Course Supply Company  
Henry A. Dreer

### Seed

J. Oliver Johnson, Inc.  
Stumpp & Walter Company

### Seed Disinfectants

The Bayer Company  
E. I. Du Pont de Nemours & Co.

### Sod Cutters

J. Oliver Johnson, Inc.  
Stumpp & Walter Company

### Sprinklers

L. R. Nelson Mfg. Co.  
Buckner Mfg. Co.

### Sprinklers and Sprinkling Carts

Reade Mfg. Company

### Tractor

R. S. Horner  
E. G. Staude Mak-A-Tractor Co.  
Toro Mfg. Company  
Pennsylvania Lawn Mower Works

### Tee Mowers

Toro Mfg. Company  
Pennsylvania Lawn Mower Works

### Tractor Wheels and Spuds

R. S. Horner

### Water Systems

W. A. Buckner Mfg. Company

### Worm Eradicators

Reade Mfg. Company

## Audels Guide

An interesting series of booklets designed especially for gardeners and growers, has just been issued by the Theo. Audel & Co., 65 West 23rd St., New York City. This series is issued in four volumes—the first of which is devoted to Soil Management, which is of particular interest to greenkeepers.

The author is Edward C. Vick, son of James Vick, a distinguished educator in the fields of agriculture and horticulture. In his first volume of this series of booklets he discusses the origin and nature of the soil and follows with an interesting chapter on soil life, which describes the action of the bacteria on plant growth.

Several chapters are devoted to the questions of irrigation and drainage which are illustrated with interesting and instructive drawings. Then follow some chapters on fertilizers, particularly nitrogen sources and phosphate. There is also a chapter on potash, which is required for starch formation in plants, and a chapter on the chemical fertilizers, and how plants use food. The author lays particular stress upon the action of bacteria in the soil and has an entire chapter entitled, "Bacteria's Work as a Fertilizer."

This booklet is very interesting from every angle and as a sample of the concentrated information it contains we publish herewith a table showing the nitrogen content of various fertilizing material.

|                        |              |
|------------------------|--------------|
| Stable Manure          | 10 lbs.      |
| Bone, raw              | 60 to 80 "   |
| Tankage, general range | 80 to 200 "  |
| Fish, dried and ground | 120 to 180 " |
| Blood, dried, black    | 120 to 180 " |
| Cottonseed meal        | 140 to 160 " |
| Tankage, concentrated  | 200 to 240 " |
| Hoofs and horns        | 200 to 300 " |
| Meat scraps            | 260 to 280 " |
| Blood, dried, red      | 260 to 300 " |
| Nitrate of Soda        | 300 to 320 " |
| Calcium Nitrate        | 320 "        |
| Sulphate of Ammonia    | 400 "        |
| Leunaspeter            | 520 "        |
| Urea, BASF             | 920 "        |

## New Pittsburgh Supply House

We have just received notice of the opening of a new Pittsburgh supply house called the Golf Equipment Company. It is located in the House Building, Pittsburgh, with a repair shop at 2428 West Liberty Avenue.

The Golf Equipment Company is operated by A. H. Krigger and F. L. Huseman and handles tractors, mowers, rollers, sprinklers, hose,

## Greener Greens

### HYPER-HUMUS

"The Soil Essential"

### Outstanding Qualities

# 7

1. Holds Moisture
2. Encourages soil life
3. Corrects soil texture
4. Prevents soil leaching
5. Increases soil temperature
6. Improves compost mixture
7. Restores lost organic matter

To make a perfect top-dressing, mix sharp sand, good top soil and Hyper-Humus, equal parts by volume.

Write for prices and "Soil Improvement" Booklet

### HYPER-HUMUS COMPANY

48 Park Pl.

Newton, N. J.

**Hyper-Humus**  
TRADE MARK REGISTERED  
"Puts the Top in Top Soil"

seeds, fertilizers, etc. In their West Liberty shop they repair and rebuild tractors and mowers and furnish service to their customers.

Messrs. Krigger and Huseman have been handling various lines of industrial and contractors' equipment for the past ten years and are well acquainted in the Pittsburgh district.

## Bestivall—A Plant Food

Bestivall is a product of quick assimilation, making it an economical and effective agent for fostering plant growth. It is a finely pulverized fertilizer, purely organic and high in availability of its chemical contents. Its analysis shows 7% ammonia, 3 to 5% bone phosphate of lime and 1 to 2% potash. This high analysis means big returns from small applications, saving work and conserving cash. One of America's foremost chemists pronounces the advantages of Bestivall equal to those of Peruvian guano.

Bestivall, so the makers claim, must not be associated with any so-called commercial or complete fertilizer. It is more than that, as it possesses a very large proportion of rich raw manure. This is especially valuable for stimulating bacterial action in the soil, making additional plant food available.

Full particulars covering this product may be obtained from the Bestivall Mfg. Co., 1900 South Delaware Avenue, Philadelphia, Penna.



Delivered prices quoted  
on request

**The E. BIGLOW Co.**  
DEPT. G. NEW LONDON, O.



### Johnson's Sprinkling Cart



Each - - - \$35.00

Grass Seed  
Fertilizers  
Sprinklers

### Yardage Markers



100 to 500 yds.  
Each - - \$1.00

### Johnson's Hand Cart Wide Tired



As shown - - \$11.45  
With box - - 15.00  
With Hopper box 19.50

Toro Equipment  
Worm Eradicators  
Greens Accessories

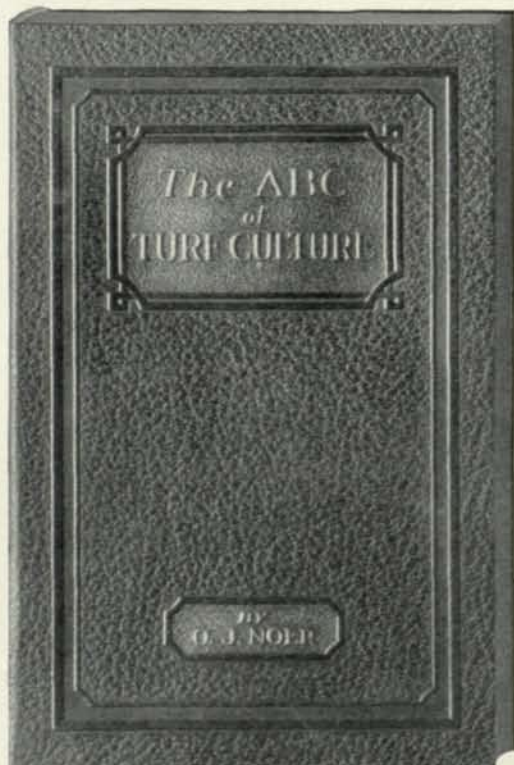
## J. OLIVER JOHNSON, Inc.

*World's Largest Golf Course Equipment House*

MORGAN, HURON AND SUPERIOR STS.

CHICAGO, ILL.

© Reg. JOJ inc 1928



Embossed Art Leather Binding—  
Pocket Size

Price-\$3.00 Postpaid

## ABC of Turf Culture

by O. J. NOER

The most practical and complete treatise on the growing of turf grasses ever published. Written in simple language which the layman can understand. A textbook on turf culture and soil chemistry.

The author combines a university education on this intricate subject with an intensely practical experience in golf course maintenance work throughout the United States.

### A Reference Book for Every Day Use

#### CHAPTER HEADINGS

Factors Affecting Turf Growth  
Effect of Size and Arrangement  
of Soil Particles on Turf  
Growth

The Part Water Plays in the  
Growth of Turf

The Functions of Organic Mat-  
ter in the Soil

Soil Composition and How  
Plant Food Becomes Avail-  
able

The Nature of Soil Acidity  
and Effect of Fertilizer Ma-  
terials on Soil Reaction

Lime in Sand, Soil or Water  
Often Overcomes Acidic  
Properties of Sulphate of  
Ammonia

Essential Plant Food Elements  
and How Plants Feed

Elements and Characteristics  
of Various Groups of Fer-  
tilizer Materials

Composition and Properties of  
Individual Fertilizer Ma-  
terials

Principles Underlying the  
Practical Use of Fertilizers  
on Greens and Fairways

## The National Greenkeeper, Inc.

405 Caxton Bldg. - - - Cleveland, Ohio