

## Can You Identify Brown-Patch?

(Continued from page 11)

that another living thing, the fungus, constantly in competition with the grass and naturally the problems become more complicated.

### Brown Patch Can Be Completely Controlled

We do know what many of the conditions are that make the fungus harmful at one time and perfectly harmless at others. There are many other conditions that are at present not thoroughly understood but in spite of this enough has been learned to enable greenkeepers to fight it in an effective way. Furthermore enough is known about it so that, for the intelligent greenkeeper, it has been removed from the realms of speculation and superstition.

In a later article it will be pointed out how, by understanding the cause and development of the disease, one is able to modify certain golf course conditions in such a way that the injury can be greatly lessened and that by using certain chemicals it is possible to completely control brown-patch.

### The New Oak Knoll Country Club Alameda, California

**P**LEASE send me all back numbers of the magazine. I am enclosing my 1927 dues. I have often wondered why there was no greenkeepers' magazine published before this, as there are plenty on every profession known, except that of greenkeeping. I am proud indeed that I am a member of the association, and a Charter member at that," writes A. B. Schoenbeck, greenkeeper at the new Oak Knoll Club at Alameda, California.

Mr. Schoenbeck continues, "As soon as I have a little more time, I shall be very glad to write something on greenkeeping for the magazine, but our club is new and not yet open for play. We have only ten greens and fairways done yet, and the others will be started in the fall.

"I took charge here on March 15, and have since top dressed and seeded most of the greens. The soil is for the most part sandy and very stony, while another part of the course is adobe, and cracks badly under the hot sun. Our water supply is not what it should be, but plans are laid and we will soon have plenty of water.

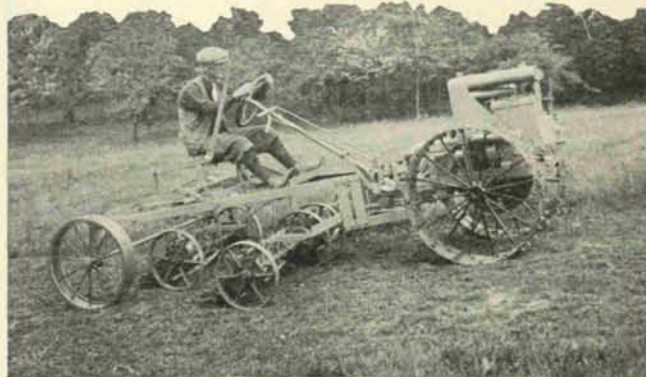
"Morning glories on the greens, traps, mounds, fairways, in fact everywhere I look I see them. Please tell me how to destroy them without hurting the grass. Every kind of weed that will grow in America grows on this land. It is almost impossible to keep ahead of the weeds at this time, and I have a gang of ten men working at them.

"There are some beautiful views here, and as soon as I have a little time, I will be glad to send some pictures. Oak Knoll Country Club will soon be heard from."

So Oak Knoll Country Club will soon be heard from, and we can well believe it. In the midst of new construction work, hot weather, 'dobe land and flourishing weeds, the greenkeeper must have plenty of courage, and Mr. Schoenbeck has his share. The readers of this magazine should look forward with a great deal of interest to the story of how Oak Knoll is being built and started on its way. Best o' luck, Mr. Schoenbeck, to you and to your club.

Say you saw the ad in *The National Greenkeeper*

## Low Cost **POWER!** For Every Job on the Course



## CENTAUR TRACTOR

For every job,—on any course, nine or eighteen holes—for mowing fairways, cutting the rough, hauling, plowing, seeding, leveling, ditching, pumping—every job that requires power, the Centaur has proven itself the ideal, economical power unit on scores of courses.

Centaur's powerful motor delivers ample power for the steep grades and tough jobs—yet *this tractor costs only a few cents an hour to operate!*

Light in weight, the Centaur can be used on the fairways when the ground is soft, without crushing turf, and in dry spells as well without damage. It is flexible and compact, easy to back and turn, works closely around bunkers, etc., and gets into the difficult places that usually require hand trimming.

For mowing the fairways, there are no extras to buy—Centaur's Universal Sulky uses any make of mower, Roseman, Pennsylvania, Ideal and all others—any of them attached in a few moments.

**To Club Officials:** Centaur's low first cost makes it easy to buy. Low operating cost makes it economical to use. Write us today for all the facts about the Centaur.

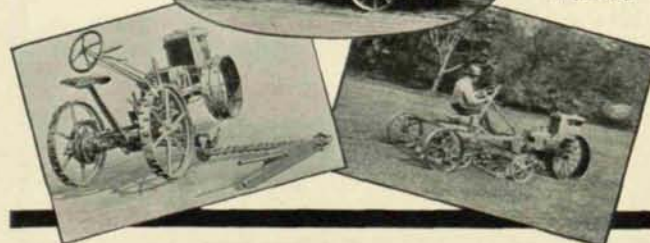
**THE CENTRAL TRACTOR COMPANY**  
201 Central Avenue  
Greenwich, Ohio

Below:  
Centaur with  
field mower  
for cutting the  
rough.



At Left:  
Centaur with  
dump cart for  
hauling.

Below:  
At work on  
the fairway.



## DEPENDABLE SEEDS

*To use  
clean, dependable  
seed  
is an important step  
in developing  
good turf!*

*An opportunity  
to quote you  
will be appreciated.*

### THE PHILADELPHIA SEED CO.

*Refiners of  
Imported and Domestic Grass Seeds*  
103-105 Arch St. Philadelphia, Pa.

## ROYER COMPOST MACHINE

*Cuts the time and expense of preparing  
top-soil, compost, etc., 75% to 85%*



*This machine saved \$8,000.00 building an 18-hole course*

Are you contemplating building a new course, or adding to your present one?

Would you like to save \$4,000 in labor on 9 holes, or \$8,000 on 18?—and have the work completed months sooner?

Write for descriptive literature to

**L. F. MITTEN**

*Sole Distributor*

Miners Bank Bldg. Wilkes-Barre, Penna.

## A B C of Turf Culture

*(Continued from page 16)*

water, have a good water holding capacity and can move water rapidly by capillarity. On fairways the sandy soils present the greatest problem. Such soils should be kept as compact as possible to facilitate the capillary rise of water, especially if the water table is near the surface. Increasing the supply of humus by growing green manure crops and the liberal use of manure prior to seeding benefits such soils by increasing their water holding capacity.

The bad effects incident to light sprinkling are generally appreciated. It tends to encourage very shallow root development, because roots rapidly grow towards moist areas. This surface layer dries out first and the turf does not obtain water because capillary rise is slow in dry soil.

During the hot summer months, mid-day sprinkling results in enormous losses of water. Evaporation is so rapid that much water is lost before absorption by the soil takes place.

*Don't Miss Back Numbers Containing Chapters*  
**A B C OF TURF CULTURE**  
*You Should Keep a Complete File*

*This Series Started in the  
January Number  
25c per copy*

**THE NATIONAL GREENKEEPER**  
405 Caxton Building, Cleveland



*Delivered  
prices  
quoted on  
request*

Dept. G **THE E. BIGLOW CO.** New London, O.



### THE WEAR-WELL TRACTOR WHEEL SPUD

*Heat Treated, Oil Tempered Steel*

*Double the Life of  
Other Spuds*

*Square Shoulder, Easy to  
Install or Remove*

*Send 10c postage for sample.  
(Advise make of your tractor)*

**R. S. HORNER, M'F'R,**  
GENEVA, OHIO

## From the Local Viewpoint

(Continued from page 22)

Shops, City Park Department; Emil Picha, Midland Hills Country Club, St. Paul; Joseph Benson, Northwood Country Club, St. Paul; Henry Rasmussen, Midland Hills Country Club, St. Paul; Carl Erickson, Glenwood Country Club; Emil Anderson, Columbia Country Club; John Pearson, Armour Country Club; Michael Sanko, Golden Valley Country Club; Fred Anderson, Town & Country Club, St. Paul; J. A. Hunter, The Country Club, Minneapolis and J. S. Clapper, H. C. McCartney and K. E. Goit of the Toro Manufacturing Company, Minneapolis.

### *Cleveland District Association of Greenkeepers*

**T**HE first open-air meeting of the Cleveland district Greenkeepers was held at Oakwood Country Club, Cleveland Heights, on Monday, May 9.

The meeting was opened with a luncheon served by the club, at which J. J. Klein, Green Committee member, on behalf of Walter M. Haas, chairman of the Green Committee, welcomed the Greenkeepers to Oakwood Club. Mr. Klein in the course of his remarks, expressed his belief that such meetings of local associations of Greenkeepers are of unquestionable benefit to the golf clubs of each local district.

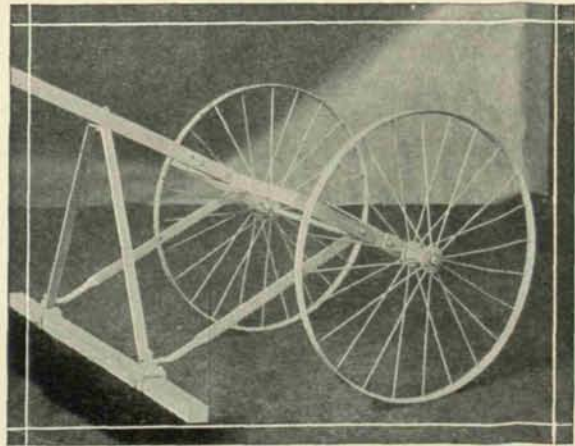
After luncheon the regular meeting was called to order by John Morley, president, who immediately turned the chair over to Christopher Bain, Greenkeeper at Oakwood, and Mr. Bain called upon Mr. Morley to address the group. In his informal talk, Mr. Morley urged the group to recognize the value of intensive study along turf maintenance lines. He cited as an illustration of its necessity the fact that a true knowledge of the chemical condition of soils is essential to good greenkeeping, both as to creating a properly acid condition in putting greens, and in maintaining them so economically. He reported that he had found some of his own greens sufficiently acid, some distinctly alkaline, and others neutral, while he had been for a long time dressing all eighteen with an equal amount of sulphate of ammonia. A knowledge of the amount of acidity has enabled him to save considerable money by cutting down the applications of sulphate of ammonia on noticeably acid greens. Mr. Morley advised the group to secure reliable soil testers,

and to look carefully to the kind of sand used in top dressing mixtures. This introduced a general discussion of the lime content in some grades of lake and bank sand, and it was decided that samples of sand from all local courses be sent to O. J. Noer, soil expert at Madison, Wisconsin, with a request that the samples be subjected to test and reports mailed to the secretary.

The speaker of the occasion was C. M. Scherer, principal of the Davey Institute of Tree Surgery, Kent, Ohio, and Mr. Scherer was received with enthusiasm. He very shortly requested the group to ask questions on their particular problems, and they came in thick and fast. The chief subject of the inquiries was the problem of lifting trees from the woods and transplanting them on

(Continued on page 36)

### THE MACGREGOR COMPOST BRUSH



This is a valuable machine, for the greenkeeper, having various uses, some of these are, rubbing in compost after top-dressing, brushing worm casts, bringing the runners of bent to the surface where they can be cut, brushing the greens in the early morning, getting the dew off, and giving the grass a chance to dry off, so that the greens can be cut sooner, also "lessening the danger of Brown Patch."

They are being used by leading greenkeepers in the Chicago District.

Every wide awake greenkeeper should have one. Order now for immediate Delivery.

Literature upon request

**MACGREGOR COMPOST DISTRIBUTOR CO.**

P. O. Box 717

WHEATON

Illinois

## *The Salary of a Greenkeeper Depends First Upon KNOWLEDGE*

**WRITE**

**The National School of Greenkeeping**

447 Caxton Bldg.

Cleveland, Ohio

## Which Bent Shall I Use?

This question must occur to hundreds of honest and hard working Greenkeepers many times.

We wish you could see our Nursery and come to feel and understand our attitude toward our business of furnishing the best product possible to those who want and deserve the best.

Weeds and clover and four year old patches of faded shaggy bent is not our idea of what you

want. Our nursery rows are clean, straight, less than one year old and not a drop of artificial watering or an ounce of fertilizer has been applied to them.

Write us for a sample of our shredded stolons and see for yourself what an improved product we have over the old lumpy, hit or miss stuff you used to buy.

**BENT GRASS COMPANY**

**Hoopeston, Illinois**

*When there is a better Strain of Bent, we will grow it*

## Tile Drainage For Golf Courses Is A Permanent Investment In Good Turf

Hancock Vitrified Tile is Everlasting

*Write for Drainage Bulletin*

**The Hancock Brick and Tile Company**  
Orchard Avenue FINDLAY, OHIO



*French  
Lick  
Springs  
Hotel Co.*

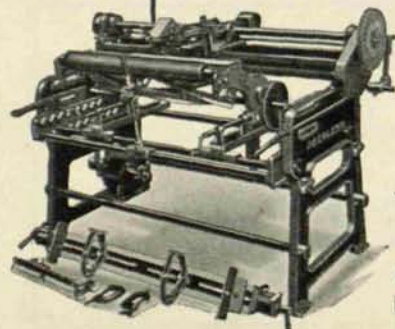
*"One of  
our  
Users"*

### SMALL CLUBS AND LARGE CLUBS

ARE saving time and money by using the Peerless Lawnmower Sharpener. It sharpens all makes of cutting units scientifically—quickly—accurately—does the work as nothing else can. Grinds a perfect bevel and clearance—blades cut like a new pair of shears. No more hard running mowers—no more pulling and tearing of turf. Operated by a 1/3 H.P. Motor—attach it to your lamp socket. Special Grinding Wheel for sharpening grass shears, sickles, scythes, axes, etc. Skate Sharpener Attachment included—sharpens all makes of skates. Will pay for itself the first season. Hundreds of Golf Clubs, large and small, use the Peerless.

*Write for Catalog and  
list of users*

**The Fate-Root-Heath Co.**  
825 Bell St.  
Plymouth, Ohio



The **Peerless**  
Lawnmower  
Sharpener

## Diplomacy Pays

*(Continued from page 19)*

know how to take care of his tools cannot use them to the best advantage.

It is not a good policy to get too familiar with your men during working hours, and by all means show no favors. If you have any trouble agitators, or men who can't talk and work at the same time get rid of them, no matter how good workers they are. If you don't they'll cause you more trouble than Brown Patch.

## Changing Chairmen Often a Drawback

Now comes the ticklish part, fellow greenkeepers. You have got to be a diplomat to get along with all of the members of the club. Some clubs appoint a new Chairman of the Green committee every year which is a great mistake. I know of one instance where the greenkeeper and Chairman of the Green were patting themselves on the back because they were being complimented in the past by the members for having ideal rough, (which they had) a thin stand of grass and no unplayable lies. This year the greenkeeper is working under a new chairman who wants him to seed and top dress the ideal, above mentioned rough.

Where a greenkeeper is known to several members of the club who have confidence in his work and whose influence is held in high esteem by the club, and a new chairman is appointed who has a lot of radical ideas, these above mentioned members will take exception to such changes being made. I can assure you under such conditions there wouldn't be so many expensive and damaging innovations introduced in maintaining golf courses.

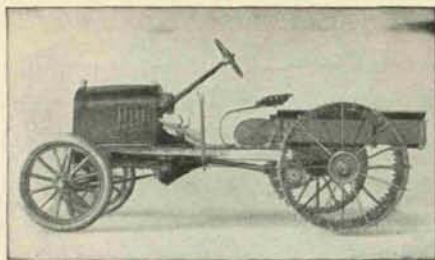
### MEMBER GREENKEEPERS:

*Send in Descriptions of Your Methods  
Ask Questions about Your Problems  
Let Us Have Your Suggestions*

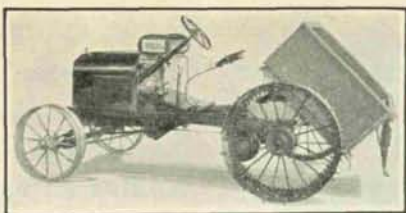
**THIS IS YOUR MAGAZINE!**

**The National Greenkeeper**

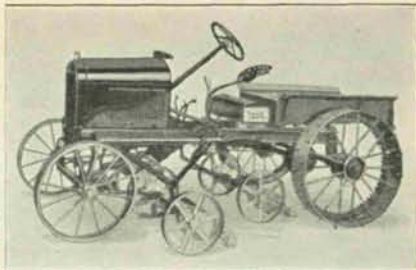
405 Caxton Building - - - Cleveland



Staude Golf Course Tractor as shown above easily pulls five 30" cutting units, rollers, hay mowers, trailers, etc.  
Price only ----- **\$420<sup>00</sup>**



Staude Golf Course Tractor with steel dump body, capacity one cubic yard. Price only **\$495<sup>00</sup>**



Staude Golf Course Maintenance Machine consisting of Tractor, underneath hitch, three 30" cutting units. Price only **\$695<sup>00</sup>**

Why pay more—when more than 1,000 Golf Clubs use the Staude—It must be good—Every user a booster—Machines fully guaranteed, nothing better at any price—Write today for our prices, etc.

## E. G. STAUDE MAK-A-TRACTOR CO.

2630 University Ave.

St. Paul, Minn.

Keep weeds out of Golf ~ Sow Scott's Seed



for every dot there is a golf club that sows SCOTT'S SEED

And this is why they sow it. In the words of a Pennsylvania Greens Chairman: "We seeded our 9 hole course with Scott's Seed and many golf enthusiasts pronounce it the best year-old turf they have ever seen. Our 9 greens were sowed with your German Bent and today there is surprisingly thick green turf. Now you know what I think of Scott's Seed." For the good of your course get more facts about Scott's Seed before you buy.

O. M. SCOTT & SONS CO.  
Marysville, Ohio



Hole Rim



Tee Ball



Setter



Marking Flag



Turf Cutter



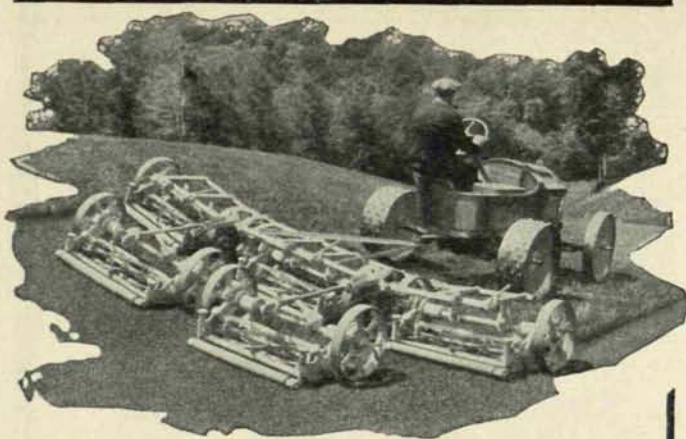
Tee Stand

## Spalding Course Supplies

Spalding carries a complete line of golf course supplies. We can fill your every need. Our catalog contains complete information. Mailed on request.

*A. G. Spalding & Bros*

New York Philadelphia Chicago San Francisco  
—and all principal cities



## When QUALITY Counts Most

It is during the longest, hardest days of the year, when the players as well as the grass are trying to make up for lost time, that PENNSYLVANIA Quality more than justifies itself to the busy Greenkeeper.

It is then, for instance, that the sturdy Super Fairway Quint shows best, not only its speed and efficiency, but its ability to stand the "gaff" and stay on the job. Because every moving part of the Super Fairway Quint is roller-bearing (even the ground rollers)—all its knives are of the finest crucible tool steel, oil hardened and water tempered, and its lubrication throughout is Alemite. It is a stranger to the repair shop.

You will be interested in our attractive golf catalog containing full details on the Super Fairway, the improved Super Roller Greens Mower and all the other PENNSYLVANIA Mowers for Golf Courses. Write today for your copy.

**PENNSYLVANIA LAWN MOWER WORKS**  
1645 North 23rd St. Philadelphia, Pa.

### TEN SUPER FAIRWAY FACTS

1. A unique, positive lifting device, easily operated by one man, permits the raising of the two outboard units so that it may enter narrow spaces.
2. Will cut all the fairways on any average 18-hole course in less than two days.
3. Ingenious swivel attachment permits each mower to follow exactly the contour of the ground it covers.
4. Frame supported on two separate ground wheels.
5. All bearings and gears in dirt-proof, oil-retaining housings.
6. Heat treated and hardened cut steel gears.
7. Removing two bolts changes the Quint to a Trio.
8. May be used to cut the rough by raising its units.
9. Each mower may be raised separately. Automatic clutch idles or engages cutting cylinders as they are raised or lowered.
10. Mower units interchangeable—will fit in any position.

**PENNSYLVANIA**  
QUALITY  
LAWN MOWERS



The Super Roller Greens Mower has been still further improved for 1927.

## From the Local Viewpoint

(Continued from page 33)

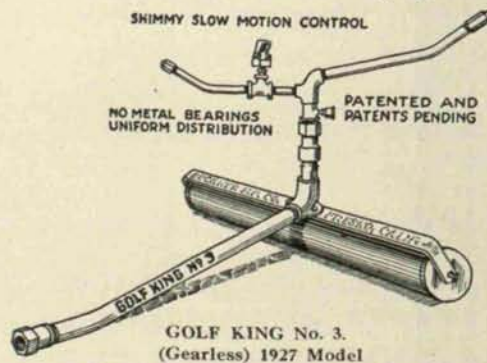
the course. This round table discussion proved of extreme interest, and much information as to the proper preparation of the soil and protection of the trunks was gained, as well as important tips on just when it is safe to lift trees for transplanting. Mr. Scherer expressed the belief that Spring is the best time of year for transplanting, but that no tree should be lifted if the buds have opened.

At the conclusion of the meeting an inspection of the course followed, and particular interest was shown in the re-bunkering of Number 9 green, then in process.

The good effects of the drainage system installed at Oakwood Club by Wendell P. Miller of Columbus, Ohio, two years ago, were easily apparent. The growth of turf on the fairways testify to the value of tile drainage.

Mr. Bain, during the inspection of the course, advised the group that he has never been troubled with turf killing, either from the ordinary forms of brown-patch, or any other cause, and attributed this freedom from trouble to the consistent use of bi-chloride of mercury which he uses Spring and Fall for the eradication of earthworms.

## THE GOLF KING SPRINKLERS Standard Golf Course Equipment



This is the last word in golf course sprinklers. Guaranteed by the LARGEST AND OLDEST EXCLUSIVE SPRINKLER FACTORY. The pioneers in golf course irrigation, slow motion sprinklers and originators of the HOSELESS SYSTEM of Golf Course watering. Inventors of the AUTOMATIC Soluble fertilizer distributor for use with sprinklers. We can cut your irrigating cost 50%.

GOLF KING No. 3 will cover greater area more uniformly on the same pressure than any other sprinkler ever made. Nothing to wear out or get out of order.

GOLF KING SPRINKLERS have been adopted by 90% of the clubs in the West and hundreds in the East. Write for literature. Representative wanted in each district.

**BUCKNER MANUFACTURING CO.,**  
Fresno, California



## Hydraulic Sprayer Reduces Cost

Add it to your Greens Equipment, it will soon pay for itself in the labor it saves. It enables you to fertilize your greens quicker—easier, and far more thoroughly than by any other method. Write for complete details.

**CHAS. ERICKSON**

*Golf Course Equipment*

2816 Colfax Ave. South

Minneapolis, Minn.

## A Complete Golf Supply House in Cleveland

Distributors of  
"Toro Line" "Darbysteel Products" Parts  
Service Red E Power Mower

Manufacturers of  
Gem Hole Cutter Hercules Turf Repairer  
Putter Hole Cup

Dealers in  
Seeds - Fertilizers - Eradicators - Insecticides  
Golf Course Maintenance Machinery  
Golf Course Supplies  
Locker Room and Professional Shop Equipment

Sales Agents for  
Hubbard Nursery's Certified Washington  
Bent Stolons

Write for Literature and Prices  
When in Cleveland see our complete display

**Golf Course Supply Co.**

3049-51 Carnegie Ave.

Cleveland, O.

## Customer's Chemist Proves FAIRWAY Best!

"The Chief Chemist has made a test of Fairway Water Hose and says it is the finest piece of hose he has ever seen, and is recommending its use in all departments and has requested Purchasing Department to buy the hose when in the market."



**THE REPUBLIC RUBBER CO.**  
Youngstown, Ohio

## The Best Greenkeeper In The World

Cannot maintain perfect turf unless his  
course is well drained

*Think It Over*

**WENDELL P. MILLER**

Golf Course Drainage Engineer

403-5 East Broad Street Columbus, Ohio

## If You Are Not a Member

Please Sign the Subscription Blank Below and Return With Your Check

THE NATIONAL GREENKEEPER,  
407 Caxton Building,  
Cleveland, Ohio

Date.....1927

Please enter my name as a subscriber to THE NATIONAL GREENKEEPER  
for one year, for which my remittance for \$3 is enclosed.

Name.....

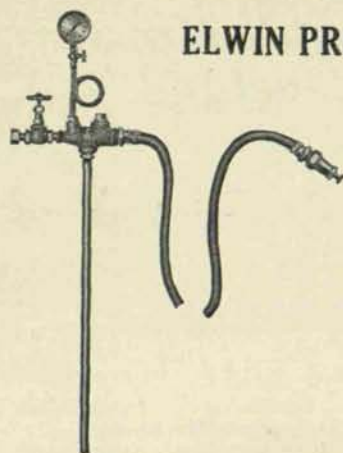
I hold the following position in  
my club: \_\_\_\_\_

Club.....

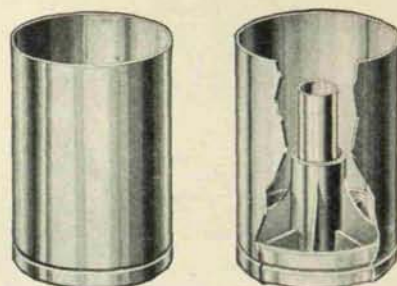
Address.....

# ELWIN PRODUCTS for GOLF COURSES

## ELWIN PROPORTIONING APPARATUS



Does away with old and expensive methods of applying liquids to turf. Saves its cost in the treatment of 18 greens. Made of solid brass, no wearing parts, guaranteed for one year. Positive in operation and fool-proof. Applies manures, chemicals, fungicides from stock solutions in correct dilute proportions. The ELWIN will be sent on approval to any club. Price \$55.00. Fits on any ordinary Barrel. Over 700 in use.



### ELWIN All Brass Hole Cup

*The only All Brass Cup ever offered to the Golf Trade. Will last a life time. Have one sent on approval.*

ELWIN Apparatus for applying CALOGREEN. Recently shown at the New England Golf Equipment Demonstration with great success. Write for particulars.

MOWRAH MEAL, largest stock in the United States carried by us.

SUPERFINE Grass Seed. Strictly wholesale prices.

Agents for:—"Pattisson" equipment; ROYER Compost Machine; ALBION Fertilizer Distributor; "PREMIER" Poultry Manure.

Equipment and Supplies of all kinds. Write for catalog and prices.

**E. L. WINN, INC.**

**355 Jersey Avenue**

**ELIZABETH, N. J.**

*Western Distributor: Geo. A. Davis, Inc., 5299 Elston Ave., Chicago, Ill.*

## Classified Advertisements

*Golf Club Officials who wish to secure greenkeepers, assistant greenkeepers and golf course mechanics, will save time and money by writing our Employment Bureau at 407 Caxton Building Cleveland, Ohio.*

Advertisements under this heading \$1.00 per 20 words, 4 cents per additional word.

This column is operated in connection with the Employment Bureau of the National Association of Greenkeepers of America.

### Classified Employment

GREENKEEPER with 25 years' experience wants good position. Box 152, this magazine.

GREENKEEPER desires position. Exceptional experience construction and maintenance. Ohio preferred. Box 153, this magazine.

## NOTICE

Greenkeepers who desire to secure positions through the Association Employment Bureau should submit with their applications an account of their experience, proper references and approximate amount of salary requested.

The Classified Advertisement column of THE NATIONAL GREENKEEPER offers a suitable medium through which applicants for positions as greenkeepers, assistant greenkeepers or golf course mechanics may get in direct touch with opportunity.

# Economy SPRINKLERS



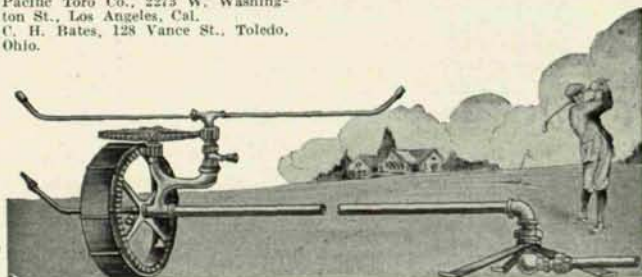
There is no sprinkler that  
can be substituted  
for the

## Travelling Sprinkler —it Moves itself!

The Economy Travelling Sprinkler is the only sprinkler of this design in the world. It is the only one that actually MOVES . . . that keeps on moving and does a perfect job of watering as it goes. Patented ten years ago . . . today built stronger than ever and because of its merit it is recognized as the most dependable piece of irrigation equipment on many of the best courses in America.

Ask nearest agent for  
demonstration

H. R. Jahn, 7211 Water St., New  
York.  
Toledo Terminal Warehouse Co.,  
Toledo, Ohio.  
Golf Course Supply Co., 3049 Car-  
negie Ave., Cleveland, Ohio.  
The Lawn Equipment Co., Detroit,  
Mich.  
Indianapolis Toro Co., 703 Roosevelt  
Building, Indianapolis, Ind.  
Louis Hansen's Sons, 213 W. Second  
St., Davenport, Ia.  
Hovey Seed Co., 19 Market St.,  
Boston, Mass.  
Henderson Golf Equipment Co., Dal-  
las, Texas.  
Whitney Golf Co., 209 E. 22nd St.,  
Kansas City, Mo.  
Southeast Toro Co., Jacksonville,  
Fla.  
Western Golf Course Supply Co.,  
284 E. 10th St., Portland, Ore.  
Pacific Toro Co., 2273 W. Washing-  
ton St., Los Angeles, Cal.  
C. H. Bates, 128 Vance St., Toledo,  
Ohio.



The "Traveller" waters a circle up to 160 feet diameter. Turn the water on and it works continuously without fear of flood-  
ing—because it keeps moving. Types for  
day or night watering.

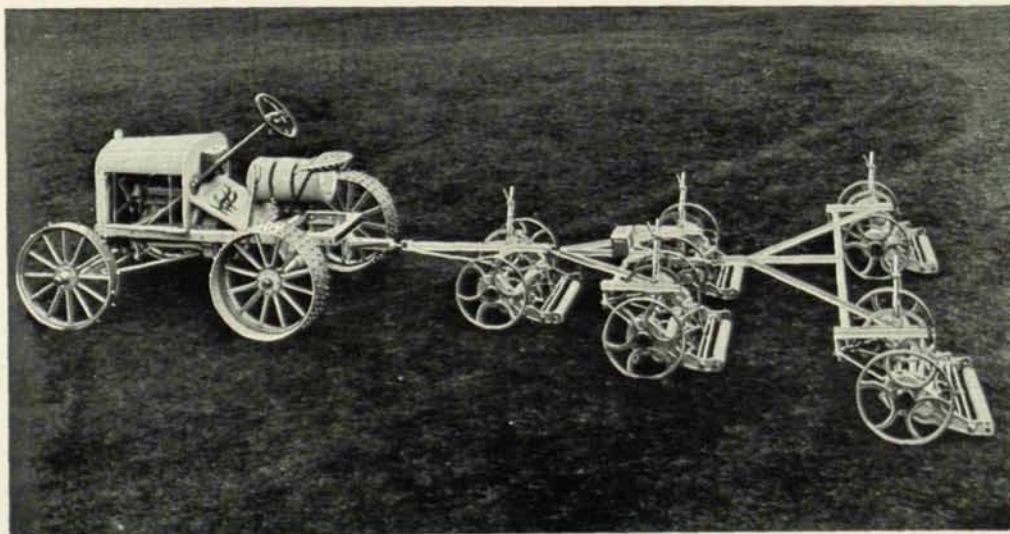
**Economy Irrigation Co., Inc.**

HEAD OFFICE

21 Spokane St., Seattle, Wash.

## 49 of the 57 Golf Courses awarded major tournaments for 1927 are using WORTHINGTON FAIRWAY MOWING EQUIPMENT

*"Wherever you find a good course you will find a Worthington"*



Price:—\$1104.00 Complete

Worthington Lawn Tractor and Quintuplex Mower combination, cutting a swath nearly twelve feet wide.

## Worthington Mower Company

STROUDSBURG, PENNSYLVANIA

CHICAGO

MONTREAL

SAN FRANCISCO

ENGLAND