

## Creeping Bent Turf Ready to Lay Down

Hundreds of golf and country clubs, greenkeepers, landscape architects, parks, etc., utilize Illinois Grass Co.'s True Washington Strain Creeping Bent in solid turf form. Furnished in rolls ready to lay down like a carpet. Guaranteed to grow vigorously into a rich, green, velvety lawn if properly cared for. Also furnished in stolon form. Write today for prices and samples.

**Illinois Grass Co.,** Department 361  
18455 Reigel Road, Homewood, Ill.  
J. A. Carter, Sales Agent, 75 E. Wacker Drive, Chicago.

## HUBBARD NURSERIES N. Kingsville, O.

→←←  
A fine stand of  
genuine Washing-  
ton strain of Bent.  
*Extra rich in nodes.*



shown more resistance to the inroads of brown patch than ordinary greens have.

From the point of view of its deadly effectiveness in ridding greens of worm casts, and the great saving of time, trouble and money that it affords, this new Dolco product should prove itself invaluable to wide-awake greenkeepers.

Dolco stands behind a fine line of quality products for use on the course and in clubhouse, an infallible Weed-Killer, an equally deadly Ant-Killer, Mouse Cereal, an effective mole exterminator, and Ban, the sudsless ball washer that is kind to enamel.

### A New Ant Destroyer

A new ant destroyer, especially prepared to meet the needs of the greenkeeper, after prolonged tests, has recently been put on the market by the Royal Products Company of Baltimore, Md. This product is called Anti-Ant and is used by mixing it in a large quantity of water and gently pouring the mixture into the ant hills to flood them.

The ants are quickly killed and no other ants will come to the same place after treatment.

Anti-Ant will not injure the turf and in fact can be used as a plant spray against insects which attack evergreens and other plants or flowers.

The makers of Anti-Ant are so sure of the results that they agree to refund any money paid for it if it does not prove satisfactory when used as directed. The price of a trial order, sufficient to make fifty gallons, is \$7.00 delivery charges prepaid.

### Dependable Drainage

Dependable drainage, a dry surface at all times, and the absence of break-downs and repairs, are the main advantages of Armco perforated pipe given in a new well-illustrated 24-page catalog, No. 4,

just issued by the Armco Culvert Mfrs. Association, Middletown, Ohio.

According to this catalog, Armco perforated pipe, introduced in 1916, was developed to secure higher drainage efficiency. Blueprints and photographs show how it has been successfully used to eliminate wet cuts, frost boils, soft spots, landslides, and for the drainage of large open areas.

A page is devoted to capacity and sizes. Helpful formulas are given, as are quotations from statements of actual users regarding results they have obtained with this product.

### Hoseless Fairway System for Columbus C. C.

Soil technology, subsurface drainage, and turfing were first successfully coordinated at Columbus (Ohio) Country club where Wendell P. Miller originated and perfected the subsurface drainage engineering and turf improvement methods which he has since applied to turfed areas in many states and several foreign countries.

Attilio Millreneo, "Tillie," as he is known to all convention goers, was greenkeeper at Columbus when Miller started there and worked with him for several years. Later, when Miller moved his office to Chicago, his work at Columbus Country club was taken over by Dr. George McClure, who is well known both as professor of soils at Ohio State, and soils technologist for Wendell P. Miller and Associates. "Tillie" thus has had the advantage of years of association with Dr. McClure.

Now Wendell Miller returns to provide "Tillie" with a one-man fairway hoseless irrigation system and new high pressure pumping plant drawing water from the river. Buckner equipment is used exclusively in this installation.

Fortunate, indeed, is "Tillie." Complete drainage, hoseless irrigation, a water supply of five hundred gallons per minute

at a residual pressure of one hundred pounds at the farthest outlet, and a great soils laboratory with its corps of experts. Some greenkeepers don't believe in the latter—but "Tillie" does because he has the proof at hand.

Columbus Country Club fairways are in splendid condition without irrigation. With the new course the turf should certainly approach perfection.

### Columbus Army Club

Captain David L. Neuman who is in charge of the nine-hole course at the Columbus General Depot is installing a Miller hoseless fairway system, using Buckner equipment, also hoseless tee sprinklers, and new hose green outlets. Hoseless equipment for one green will be installed.

The Army Club already has a large water supply at high pressure, also considerable large pipe already in the ground, thus enabling the officers to make their installation at a very low outlay.

### Golf News

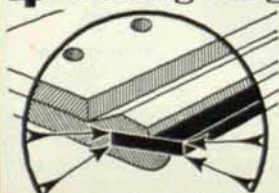
NEW PHILADELPHIA, OHIO.

The county's newest nine-hole golf course is rapidly nearing completion. It is being built by F. W. Weaver and M. G. Maurer, both of Sugar creek, on 55 acres of ground adjoining the famous Winklepleck grove. The course is 3,000 yards long and par will be 36. A clubhouse is located near No. 1 tee. It is expected the course will be ready for play in July.

MILWAUKEE, WIS.

Green Bay—Construction work on the new Shorewood golf course, north of the city has started with the letting of the contract, according to G. Kane, secretary of the new club, which has recruited 94 members at the outset of a membership campaign. It will be ready for play by July 15th.

## 4 Cutting Edges to Each Blade!



Easily attached; quickly changed. New low prices.

Send for Price List N

BUDD MFG. CO., Ravenna, Ohio

**BUDD** MOWER  
BLADES

WINTER-HARDY — ACCLIMATED

## BENT GRASS SEED

Direct from my farms where it is grown

GUARANTEED RESULTS

A. N. PECKHAM :: Kingston, R. I.