

# Grass Seed

of Known Quality

TESTED for PURITY and GERMINATION

*Prices and information on request*

*Stumpp & Walter Co*

*Specialists in Golf Grass Seeds and Equipment*

30-32 Barclay Street

New York City

early stages of the course. These aids to beautification represent an investment which increases in value as time passes. They should not be neglected for to do so will incur additional expense later and interfere with the development of the course. Trees especially are well worthy of attention. In its natural setting there is nothing so beautiful as a tree. What can add more to the attractiveness of a golf course site than beautiful trees?

No definite rules can be laid down regarding the conditioning of all new courses. Much depends upon soil characteristics and climatic conditions. The individual nature of each separate piece of property cannot be ignored. However, there is one general rule: A new course requires considerable more attention than a mature course. Knowledge is not only required of what to do but of when to do it.

The beauty of the golf course is in the hands of the greenkeeper who may retain or mar it. The greenkeeper responsible for the appearance of a golf course has no small obligation toward a club. The best designed golf course soon deteriorates if not properly maintained. A qualified greenkeeper, trained by experience, will be able to bring the vision of the architect to full development. Uniform putting surfaces, well-groomed fairways, properly sanded traps, inviting tees, beautiful landscaping and intriguing holes—these are some of the factors of golf course perfection.

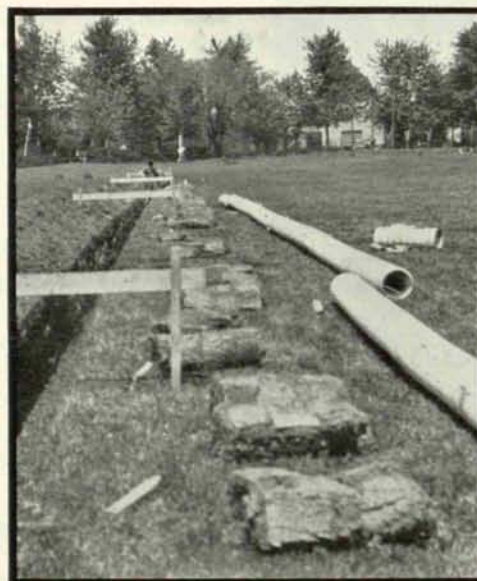
## JOHN MORLEY ILL

As we go to press word comes to us of the sudden illness of Colonel John Morley. He was taken to a Youngstown hospital for observation, and because of his weakened condition was given a blood transfusion. We voice the wishes of all of our readers for his speedy recovery.

## "HEADQUARTERS FACTS" on

*Drainage will simplify*

YOUR *Problem*



ARCHITECTS and engineers of many excellent golf courses made use of Headquarters facts before they adopted a drainage system. Comparisons among many products, revealed in the vast library at Drainage Headquarters, Middletown, showed them which product was best for all reasons—which one possessed the greatest life expectancy based on performance—which one, being more durable, was logically lower in price when judged on a per-year basis.

Armco Corrugated Iron Pipe, light, flexible, unbreakable, holds the unequalled record of 24 years continuous service under the highways and the railroads of the nation to date. The test of Nature has incontestably established the superior worth of Armco Corrugated Iron Pipe.

To learn of the application of Armco Perforated Iron Pipe to the needs of golf courses, architects, engineers, committee members, greenkeepers and professionals are invited to send for data on modern drainage. No obligation. Also, the services of nearby Armco engineers are available. Write.

*Armco culverts and drains are manufactured from the Armco Ingot Iron of The American Rolling Mill Company and always bear its brand.*

ARMCO CULVERT MANUFACTURERS ASSOCIATION  
MIDDLETOWN, OHIO



© 1930, A.C.M.A.