

Market Place and Buyers' Guide

Where reputable manufacturers and dealers list and describe their products. Greenkeepers are requested to write the Market Place for any special information they desire about supplies or equipment

Airport Drainage

Armco Culvert Mfrs. Association.

Arsenate of Lead

Sherwin-Williams Company
Grasselli Chemical Co.

Ball Locators

Worthington Mower Company

Ball Washers

J. Oliver Johnson, Inc.
Worthington Mower Company

Bent Stolons

Hubbard Nurseries
O. M. Scott & Sons Co.
Stumpp & Walter Co.

Bird Houses

Michigan Cedarcraft Co.

Bridge Floors

Armco Culvert Mfrs. Association

Catchbasins, Corrugated Iron

Armco Culvert Mfrs. Association

Charcoal

Cleveland Charcoal Supply Co.

Cocoas Creeping Bent Seed

Lyman Carrier, Inc.
Stumpp and Walter Co.

Compost Distributors

Toro Mfg. Company
Hayden Mfg. Co.

Compost Mixers

Toro Mfg. Company

Drainage Engineers

Wendell P. Miller and Associates

Drainage Gates

Armco Culvert Mfrs. Association

Dump Carts

Toro Mfg. Company
Worthington Mower Company
Ideal Power Lawn Mower
Peter Henderson & Co.

Fairway Rollers

Toro Mfg. Company

Fairway Mowers

Pennsylvania Lawn Mower Works
Toro Mfg. Company
E. G. Staude Mak-A-Tractor Co.
Worthington Mower Company
Ideal Power Lawn Mower

Fencing

Michigan Cedarcraft Co.

Fertilizers

Milwaukee Sewerage Commission
Golf Course Supply Company
J. Oliver Johnson, Inc.
Lyman Carrier, Inc.
R. L. Skove
Synthetic Nitrogen Products Corp.
Peter Henderson & Co.
Grasselli Chemical Co.
Arthur D. Peterson, Inc.

Fertilizer Spreaders

Hayden Mfg. Co.
O. E. Thompson and Sons

Flexible Steel Mats

J. Oliver Johnson, Inc.
Golf Course Supply Co.

Fungicides

Sherwin-Williams Company
Grasselli Chemical Co.

Golf Equipment

Michigan Cedarcraft Co.
Freidag Mfg. Co.
Stumpp & Walter Company
Peter Henderson & Co.
Arthur D. Peterson, Inc.

Golf Flags

Stumpp & Walter Company
Peter Henderson & Co.
Standard Mfg. Co.
Arthur D. Peterson, Inc.

ADVERTISER'S INDEX

American Seed Company	37
Armco Culvert Mfrs. Assn.	Cover
Buckner Mfg. Company	28
Carrier, Lyman	8
Cleveland Charcoal Supply Co.	42
Dreer, Henry A.	36
F. & N. Lawn Mower Co.	36
Fate-Root-Heath Co.	21
Freidag Mfg. Company	37
Friend Mfg. Company	36
Golf Course Supply Co.	29
Grasselli Chemical Co.	16
Hardie Mfg. Company	17
Hayden Mfg. Company	14
Henderson, Peter & Co.	13
Hubbard Nurseries	42
Hyper-Humus Company	42
Ideal Power Lawn Mower Co.	4
Illinois Grass Company	37
International Seed Testing Lab.	42
Jacobsen Mfg. Company	24
Johnson, J. Oliver, Inc.	24
McCullough's J. M. Sons Co.	40
Michigan Cedarcraft Company	37
Miller, Wendell P.	40
Milwaukee Sewerage Commission	Cover
Peterson, Arthur D., Inc.	18
Nelson, L. R. Mfg. Company	24
Peckham, A. N.	25
Pennsylvania Lawn Mower Works	11
National Association of Greenkeepers of America	3
Reade Mfg. Company	30
Republic Rubber Company	18
Roseman Tractor Mower Company	27
Scott & Sons Co., O. M.	29
Sherwin-Williams Company	Cover
Skove, R. L. Co.	42
Standard Mfg. Company	26
Staude, E. G. Mak-A-Tractor	20
Stumpp & Walter Co.	15
Synthetic Nitrogen Products Corp.	28
Thompson, O. E. & Sons	36
Toro Mfg. Company	Cover
Worthington Mower Company	23

Horse Drawn Mowers

Pennsylvania Lawn Mower Works
Roseman Tractor Mower Co.
Worthington Mower Company

Hose

Republic Rubber Company
Peter Henderson and Co.

Humus

Hyper-Humus Company
Peter Henderson & Co.

Insecticides

Sherwin-Williams Company
Peter Henderson & Co.
Grasselli Chemical Co.

Lawn Mowers

Pennsylvania Lawn Mower Works
Toro Manufacturing Company
Ideal Power Lawn Mower
F. & N. Lawn Mower Co.
Worthington Mower Company

Manure

R. L. Skove

Mowing Equipment

E. G. Staude Mak-A-Tractor Co.
Toro Mfg. Company
Pennsylvania Lawn Mower Works
Worthington Mower Company
Jacobsen Mfg. Co.
Roseman Tractor Mower Co.
American Seed Co.
Ideal Power Lawn Mower
F. & N. Lawn Mower Co.
Arthur D. Peterson, Inc.

Mower Sharpeners

Fate-Root-Heath Company
Toro Manufacturing Company

Power Mowers

Toro Mfg. Company
Golf Course Supply Co.
Worthington Mower Company
Jacobsen Mfg. Co.
Roseman Tractor Mower Co.
Ideal Power Lawn Mower

Putting Green Mowers

Toro Mfg. Company
Pennsylvania Lawn Mower Works
Worthington Mower Company
Jacobsen Mfg. Co.
Roseman Tractor Mower Co.
F. & N. Lawn Mower Co.

Rakes

Pennsylvania Lawn Mower Works

Rollers

Stumpp & Walter Company

Rough Mowers

Toro Manufacturing Company
Jacobsen Mfg. Co.
Roseman Tractor Mower Co.
Worthington Mower Company

Seed

Lyman Carrier, Inc.
O. M. Scott & Sons
Golf Course Supply Company
J. Oliver Johnson, Inc.
American Seed Co.
J. M. McCullough's Sons Co.
Peter Henderson & Co.
Henry A. Dreer
Arthur D. Peterson, Inc.
A. N. Peckham

Siphons, Corrugated Iron

Armco Culvert Mfrs. Association

Sod Cutters

J. Oliver Johnson, Inc.
Peter Henderson & Co.

Sprayers

Friend Mfg. Company
Hardie Mfg. Company

Sprinklers

L. R. Nelson Mfg. Co.
Buckner Mfg. Co.
Peter Henderson & Co.
Pelican Works

Sprinkling Carts

Reade Mfg. Company

Stolons

O. M. Scott and Sons
Illinois Grass Co.

Storm Sewers, Corrugated Iron

Armco Culvert Mfrs. Association

Street Culverts, Part Circle

Armco Culvert Mfrs. Association

Tee Markers

Worthington Mower Company
Standard Mfg. Co.

Tee Mowers

Toro Mfg. Company
Jacobsen Mfg. Co.

Tractors

E. G. Staude Mak-A-Tractor Co.
Toro Mfg. Company
Worthington Mower Company
Roseman Tractor Mower Co.
Ideal Power Lawn Mower

Water Systems

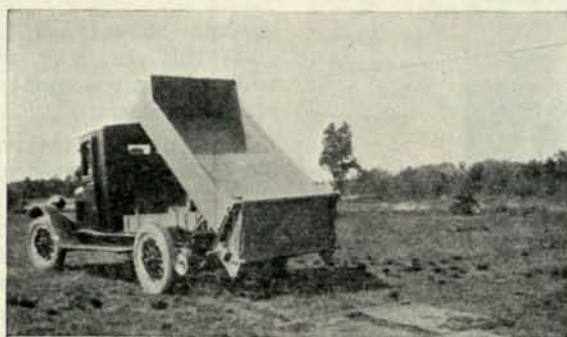
W. A. Buckner Mfg. Company

Well Casings, Corrugated Iron
Armco Culvert Mfrs. Association

Worm Eradicators

Reade Mfg. Company.
Peter Henderson & Co.

Urann Fairway Compost Spreader



URANN FAIRWAY COMPOST SPREADER
This outfit is economical and inexpensive

The Urann Fairway Compost Spreader, manufactured by Hayden Manufacturing Co. of Wareham, Mass., which was developed a few years ago, has met with enthusiastic reception by greenkeepers wherever used. It has proved to be by far the most efficient and economical apparatus yet devised for an even distribution of compost and top-dressing materials.

The spreader is furnished either as an attachment or as a complete unit with a steel dump body, ready to mount on any of the popular trucks of one ton capacity. Wide roller tires can be furnished and are recommended for use on soft turf where ruts are not permissible.

The accompanying illustration shows top-dressing attachment on

a steel dump body, elevated to working position. The driving pulleys of the spreading mechanism are in direct contact with the rear tires of the truck, and as the truck moves forward, the material is distributed evenly, at any depth desired from one-half inch to two inches, at the rate of one cubic yard in two minutes.

This apparatus has proved itself distinctly a labor and money saver to those who have used it, the actual saving being approximately thirty dollars an acre where a depth of one inch of material was distributed. The original cost of the spreading attachment can be eliminated by the saving in top-dressing about seven acres.

Hand Fertilizer Spreaders

The use of highly concentrated dry commercial fertilizers is increasing rapidly. These high concentrates are principally composed of plant food matter, where ordinary fertilizers contain from 12 to 20%. This reduces the bulk of material which has to be handled but calls for greater accuracy in the rate of distribution and more uniform spreading of the material.

This situation was sensed by one of the oldest manufacturers in the agricultural field—O. E. Thompson & Sons, 361 River Blvd., Ypsilanti, Michigan, established in 1857. This

company for over 50 years has been building grass seeders for broadcasting and spreaders, and out of this experience has developed a line of wheelbarrow type spreaders for spreading these highly concentrated dry fertilizers uniformly and accurately as rapidly as a man will walk.

Machines have been developed for the fine dry powders which require a very thin application up to and including the more heavily applied fertilizers. The quantities to be spread can be accurately gauged. The machines spread only as the

wheel turns on the ground. The hoppers are kept close to the ground so that wind does not affect the spreading. The experience of this company in building grass seeders for broadcasting from the finest to the coarsest seeds, which vary so greatly in the amounts sown per acre, was of great value in developing the type of equipment which would give the best results in handling these present day chemical fertilizers.

Radwaner Leases Warehouse

It may be of interest to the trade to know that we have obtained a long lease in a warehouse at 49 Water Street, downtown New York, where we will take care of golf and grass seed trade, also wholesale field seed trade, mixing, staining, and cleaning and now we are better equipped to handle the seed business than originally in conjunction with our present office which still is at 115 Broad St., New York.

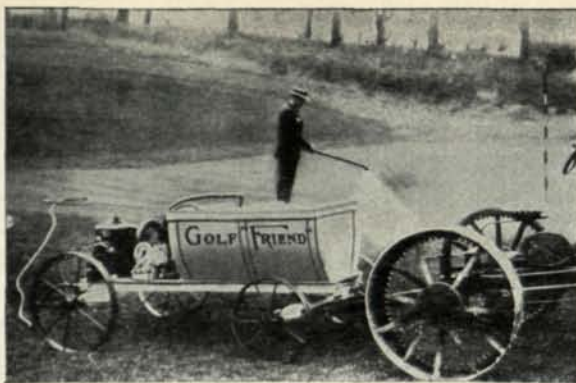
Our new warehouse is in a very handy location and we will be able to take care of our friends for quick spring deliveries to much better advantage than heretofore.

I. L. Radwaner Seed Co., Inc.

Sprayers Save Money

Golf courses, like orchards, potato fields and vineyards, are subject to the ravages of insect and fungus pests. The only safe way to control these pests and ensure that perfect condition so necessary for the best playing, is by constant and persistent applications of insecticides and fungicides. Fertilizer also plays an important part in the development of a perfect golf course.

But how can these three solutions be applied so that the grass may receive the full benefit of the applications? It is conceded that grass cannot utilize from four to six pounds of ammonium sulphate per thousand feet, before at least one-half of the fertilizer is washed below the grass roots and into the sub-



FRIEND SPRAYER FOR GOLF COURSES

soil by successive sprinklings. Such applications are a gross wastage of fertilizers.

The most effective and economical way to apply soluble fertilizer is to dissolve it in the compartment tank of the "Friend" Golf Course sprayer, and apply weekly with the "Friend" golf spray gun in diluted form, and wash it in once a month.

In this way the growth is naturally vigorous, as the grass roots are able to consume the nutrition without being over-taxed. Fungicides and insecticides are applied in the same satisfactory way.

Complete information and catalogs can be had by writing Friend Mfg Co., Gasport, N. Y.

Standard Accessories

Standard Mfg. Co. at Cedar Falls, Iowa have for several years been marketing a line of strictly high grade golf course accessories, including flag poles, tee markers, hole cups, bag racks and durable metal signs and yardage markers, also arrow markers for tees giving the number of the hole, the yardage and the par. These are especially useful where sand boxes have been done away with.

The Standard flag pole made of metal is indestructible and will not warp, is very light in weight and is furnished in combinations of either red and white or yellow and black to provide different color poles for inside and outside holes.

This company also makes metal entrance signs of solid cast aluminum with raised letters to mark the entrances to golf clubs which are neat and dignified and more durable than wood.

This company has a unique selling plan. They sell their goods on a plan of offering to ship them on open account to any golf course anywhere with a distinct understanding that if after ten days free trial the goods are not satisfactory in every respect they may be returned for full credit and the charge will be cancelled. One can easily understand that it takes the highest grade of merchandise to be sold successfully

under such a plan and the company states that they have been selling these goods under this plan for some time and are glad to report that they have had absolutely no returns of any kind.

New Catalogs

Pennsylvania Mowers

A handsome new catalog in two colors describing Pennsylvania Quality Mowers for golf courses, parks and private estates has just been issued by the Pennsylvania Lawn Mowers Works, 1645 N. 23rd St., Philadelphia. This company has been in business 52 years, having been founded in 1877 by Mr. John Braun.

The present Pennsylvania mowers were first developed for use in Scotland and most of the leading courses there, including St. Andrews, used them. Back in 1867, E. G. Passmore, Philadelphia, designed the first side wheel, internal gear lawn mower and they were manufactured by Mr. John Braun of the firm of Goodall, Braun and Waters.

Later in 1876 Mr. Braun pioneered in the development of the

Classified Employment

WANTED—Position as greenkeeper, Have had exceptional experience in maintenance and construction. All references, Box 175, this magazine.

modern mowers of today which gives this company a background and experience second to none in the United States.

The new Pennsylvania catalog not only illustrates and describes their line of Hand Mowers for Lawns and Putting Greens but horse-drawn and tractor units in single, triple and five gang series.

Back of the Pennsylvania product is a factory and service which covers every section of the United States. The company will be glad to send copy of this catalog free upon request by addressing them at the above address.

Golf Turf

Grass for golf, tennis, football, polo and aviation, parks and lawns is the subject of a new catalog for 1929 just issued by the Stumpp & Walter Company, 30-32 Barclay Street, New York City.

This company specializes in fine grass seed and they have been in this business nearly 33 years. The new catalog gives interesting information on the building of golf courses and their maintenance with many interesting photographs illustrating the work the greenkeeper has to do.

An entire section is devoted to a careful analysis of turf-making grasses with a chapter on identifica-

WHEN

Will YOUR playing season begin?

It is a matter of record that golf courses with Miller Engineered Drainage have extended their playing season three and four months. That pays.

Reduced maintenance cost is another result. We work cooperatively with architect or local contractor.



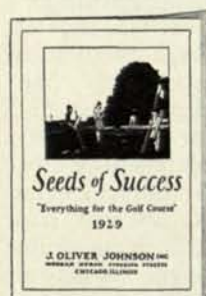
WENDELL P. MILLER
and Associates

GOLF COURSE DRAINAGE
Engineers - - Constructors
208 So. La Salle St., Chicago
85 East Gay St., Columbus, O.

tion, how to sow, and the care necessary to bring the turf to playing condition. It also takes up drainage, soil texture and fertilizers, also the eradication of worms and other pests which cause the greenkeeper to spend sleepless nights.

Stumpp & Walter carry a complete line of golf equipment and can furnish practically everything needed in golf course maintenance. They will send this catalog of helpful information to any greenkeeper who will take the time to write for it.

Seeds of Success



"Everything for the Golf Course," is the subject of a new 1929 catalog just issued by J. Oliver Johnson, Inc., Morgan-Huron-Superior Sts., Chicago, Ill.

Mr. Johnson has for years been identified with golf in the Chicago district and carries into his business a practical knowledge of the needs of the greenkeeper and superintendent. His principal business is seed, but in order to give complete service he handles a full line of accessories carefully selected from the high-grade manufacturers throughout the country.

"Service and Suggestion," says Mr. Johnson in introducing his new catalog, "are available here in the fullest measure to golf club officials and greenkeepers in connection with the upkeep of their courses. We pride ourselves on being able not only to supply the proper grass seeds, fertilizers and equipment but to advise correctly concerning those best suited for the particular needs of the buyer."

The Johnson company has been doing business for a quarter of a century and is reputed to be one of the most reliable concerns in the middle west. A copy of the new catalog "Seeds of Success" will be sent free on application.

Peckham Joins

We are pleased to inform the greenkeepers that A. M. Peckham, Kingston, R. I., one of the largest growers of Bent Grass in the country, starts in this month to support the magazine. Mr. Peckham is known to most of the greenkeepers

of the country because for many years he has been growing seed of Rhode Island Bent and more recently seed of different varieties of Creeping Bent which has been marketed direct to the golf clubs of the country.

New Ideal Roller Greens Mower

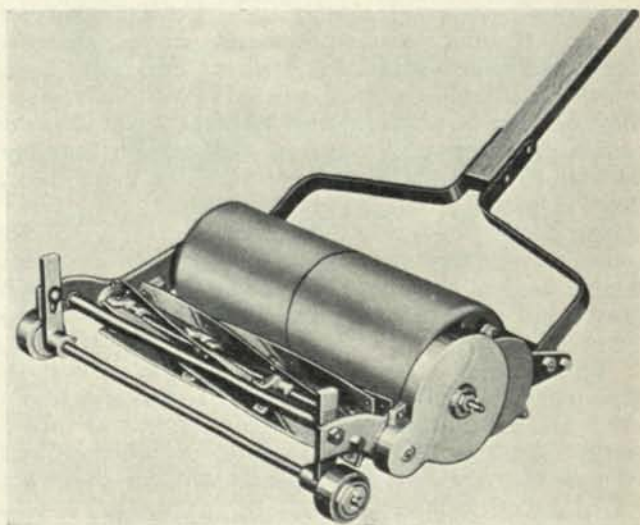
After some two years of experimental work and an actual season's operation in the field, the Ideal Power Lawn Mower Company, 444 Kalamazoo St., Lansing, Mich., have just announced a new roller type putting green mower which has a number of very important features that the manufacturers claim have had a big appeal among greenkeepers where the mower has been shown in action.

This Ideal Greens Mower is probably the lightest hand putting green mower on the market, weighing only 47 pounds and only 54 pounds when equipped complete with grass catcher and deflector. Side frames are of aluminum and the drive rollers are also aluminum castings, being machine turned to an absolutely true round. The tie rods at both front and rear not only assure alignment but also relieve all strain and pressure on the side frames.

A very important feature of the new Ideal Mower is the fact that it is equipped with a very small reel, same being only 4" in diameter. This reel is geared to turn up at a very high speed which produces a wonderfully smooth job of cutting and at the same time lessens cutting resistance to an extent where it is claimed that the mower pushes easier than any hand putting green mower with which it has been tried out in competitive tests.

The most careful workmanship is evident in every detail of construc-

The Peckham business consists of 17 farms devoted to the production of the different species of bent grass. At the present time, even with his large production, he informs us that he has only a small quantity of seed on hand.



NEW 1929 IDEAL GREENS MOWER

tion and only the very best of materials are used throughout. For instance, every moving part is equipped with the very highest grade ball bearings procurable, those on the reel being adjustable to take up end play. Even the small front casters are equipped with double oilless bearings.

The grass box is of all metal construction, rigidly built and scientifically designed in combination with the deflector to handle cut grass under all conditions with maximum efficiency. To arrive at a combination satisfactory under all conditions the mower was tested in long grass, short grass, in grass that was dry, and grass that was soaked with dew and rain.

The mower is of an 18 in. cut and can be adjusted in height from 3/16 in. to 1 in. The reel revolves at a speed to give a frequency of 7/16 in. between cuts, leaving all mowed areas in a velvety, smooth condition. A carrier is also provided, having rubber tired disc wheels and being equipped with ball bearings.