

THREE PLACES MUST BE GROUND

[Front Edge — Inside Surface of Ground Blade and Reel Blades]

ON ANY TYPE OF LAWN MOWER — TO PUT IT IN FIRST CLASS CONDITION

THE HARDINGE LAWN MOWER SHARPENER

WILL DO IT PERFECTLY

Write For Illustration—Particulars—Price
Distributor

HENRY H. DOTY

Highland Park, Illinois

giving the golf architect an excellent opportunity to plan four or five fairways lined by beautiful trees and giving a splendid setting for the greens.

Several of the fairways consist of a light sandy soil and these holes have been watered artificially for the last three seasons with splendid results. The fairway grasses are mostly redtop, blue grass and fescue, while the grass on the greens and tees is Norfolk bent.

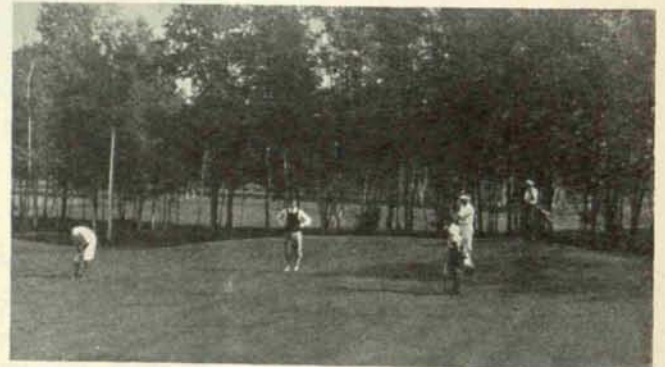
The trees which divide most of the fairways have added greatly to the beauty of Pine Lake, and, incidentally, have created havoc with golf scores. However, as each spring rolls around the members note new tree plantings around the course, indicating that the development in this respect is not yet complete.

Lombardy Poplars Are Used

IN LANDSCAPING the course, Lombardy poplars have been used extensively on account of their beauty and the fact that the branches are not scraggly, the leaves come out early in the spring and remain until play is practically ended in the fall and being small the leaves blow off the course. These qualities make the Lombardy poplar an ideal tree for golf courses. Norway maples and elms come next in order. Over one thousand trees and some twelve hundred pieces of shrubbery have been planted during the last three years which

are now maturing and promise to be a great asset to the club.

The greenkeeper, Ernest Way has made a specialty of economy in upkeep and changes made on the course are done with this in mind. The surrounding territory about the greens is so shaped as to enable the use of large mowers, thus reducing hand labor. Also the planting



NUMBER 2 GREEN, PINE LAKE COUNTRY CLUB

of trees and landscaping is placed only where the work of the large mowers will not be interfered with.

While Mr. Way uses some compost he is a strong believer in chemical fertilizers, in fact he believes he has discovered one of the best chemical fertilizers for bent or any grasses used on greens or fairways. This fertilizer possesses wonderful qualities and is splendid for weed control and unexcelled in the treatment of brown patch.

The greenkeeper crew consists of nine men including the superintendent and the course is divided up allotting each man a certain portion to take care of, thus creating competition. The mowing equipment consists of two tractors and two gang mowers, while Pennsylvania hand mowers are used on the greens.



Place
one
at
each
tee

Cedarcraft

Foursome Bag Stand
Keep the bags clean
Green Varnished
finish

Michigan Cedarcraft
Company

"Trademark"
Greenbush, Mich.

Write for
catalog
B-Bird Houses
F-Fencing
U-Furniture
G-Golf Equip-
ment, Bridges,
etc.

Send Catalogue No.
To
Street
City State
(N. G.)

MILORGANITE

THE IDEAL TURF FERTILIZER

For further information address

SEWERAGE COMMISSION

508 Market Street

Milwaukee, Wis.