

enough seed to sow pure Velvet bent greens but those wishing Velvet bent greens can start their nurseries with 10 to 20 pounds of seed or from Velvet bent plugs and with intelligent vegetative methods have in two or three years enough sod for several greens.

There exists in some minds the idea that Velvet is more susceptible to turf diseases than the other bents. This idea we believe to be entirely erroneous. From our observation we would say that it was less susceptible especially to the large brownpatch.

BENT GRASS SEED

There are some thirty varieties of Bent grass and one should have some practical knowledge relative to handling them if he is to give worth while advice as to the variety which will give the best results. There is no one variety that is a sure "cure all" in all localities. The kind that produces a "Rolls Royce" turf in California or Washington may prove to be a "second hand flivver" in Missouri, New York, Wisconsin or other states. I am a farmer. Most of my farms are devoted to the growing of different varieties of the Bent family of grass and some of these varieties make the finest turf of anything in existence. I have had a great deal of experience covering many years in furnishing golf clubs, municipal parks, athletic fields, etc., with fine turf grass seed for their putting greens, fairways and lawns. I always endeavor to furnish those varieties of bent that from experience do the best in those localities where the seed is to be used.

WHEN YOU PURCHASE SEED DIRECT FROM THE FARMS WHERE IT GROWS YOU ARE ASSURED OF AN ABSOLUTELY FRESH, VIABLE, ACCLIMATED, WINTER HARDY PRODUCT THAT WILL PRODUCE MORE PERMANENT AND DESIRABLE RESULTS ON YOUR COURSE THAN ANY SEED OF FOREIGN ORIGIN.

Boost one of your own American industries to the extent of purchasing your seed from the American farmer who grows it.

A. N. PECKHAM, Kingston, R. I.

Hillcrest—A Test for Champions

HILLCREST Country Club, located at Hickman Mills, a suburb of Kansas City, Mo., is a real test for champions. For the past two years the National Open Qualifiers have been held there and this year it is the scene of the Missouri State Amateur Championship.

From the back tees Hillcrest measures sixty-five hundred and thirty-seven yards with a par of seventy-three. Most of the putting greens are Kentucky bluegrass, although two are creeping bent and one Cocoos bent. George Robb, the greenkeeper, states that Hillcrest is



GEORGE ROBB, GREENKEEPER
Hillcrest Country Club,
Kansas City, Mo.

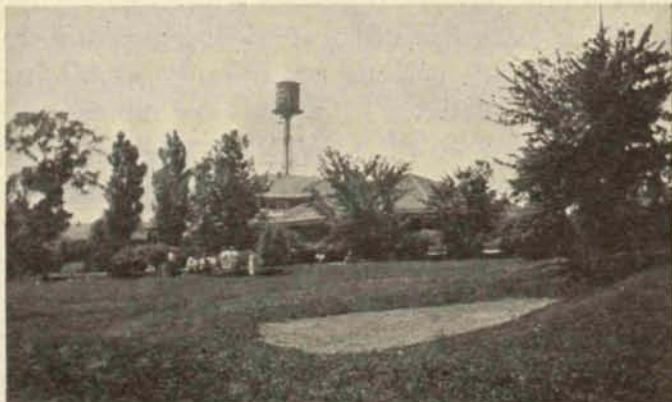
considered to have the best golfing terrain around Kansas City.

There are many natural hazards which add to the beauty of the Hillcrest course. The holes show great variety in contour and design and each has its own characteristics which call for carefully played shots. The last few holes of the incoming nine are so arranged as to increase with difficulty, compelling a player to finish strong. Another notable feature of Hillcrest is the fact that the holes stream out in every direction, thus requiring a player to use splendid judgment on windy days.



NUMBER 18 GREEN

This hole is 343 yards and the green is level and well bunkered



NUMBER 1 TEE AT HILLCREST

In the background is the rambling spacious clubhouse located in a setting of trees and shrubbery