

THE MARKET PLACE

Sawco Turf Plugger

The accompanying illustration shows a new device just put on the market by Stumpp and Walter Company, 30-32 Barclay Street, New York City. This device is designed to quickly remove weeds, ant-hills, bare patches and coarse grasses from putting greens and lawns.

The Sawco Turf Plugger is operated by placing the plugger over the weed, ant-hill or bare patch, and pushing it gently into the turf with a slight pressure of the foot. In a sim-



Showing How Easily the Sawco Turf Plugger Removes Weeds and Bare Spots

ilar manner, take out a second disc, which will push the first disc into a slightly larger upper chamber from which it may be shaken out. This operation is continued until all of the offending patches are removed.

It is then possible to cut good fresh turf and place in the holes from which the weeds and ant-hills have been removed. Then a little water and top-dressing restores the turf to good condition in a few days.

Turf Supplies and Equipment

The care of golf courses, parks, cemeteries and estates is a highly specialized undertaking that requires the most modern labor-saving tools and equipment.

Realizing the need for a compre-



"Grub-proof" your turf *now*. Sherwin-Williams Arsenate of Lead will *control or prevent infestation of greens, tees or fairways.*

Sherwin-Williams Arsenate of Lead is the lightest and fluffiest made, thereby insuring the good mixing necessary for complete coverage. It possesses maximum killing properties, quick action and unquestioned effectiveness in controlling "grubs," worms, earthworms and many weeds.

S-W Arsenate of Lead also stimulates growth of turf grass. No injurious effects. It "agrees" with other chemicals and fertilizers used to promote a healthy turf.

Send for complete directions

Send for an informative bulletin that makes it easy to "grub-proof" the turf on your course. Start work at once to prevent or control grubs. For a free copy address Dept. 500

THE SHERWIN-WILLIAMS Co.
Cleveland, Ohio

SHERWIN-WILLIAMS ARSENATE OF LEAD



hensive listing of such tools and and supplies necessary in the construction and maintenance of large turf areas.

the Ideal Power Lawn Mower Co. of 444 Kalamazoo St., Lansing, Mich., has just issued a catalog which shows the complete line of Ideal grass cutting equipment, together with a full assortment of other well-known and reliable tools

Copies of the new catalog may be obtained from the Ideal Power Lawn Mower Co. mentioning the GREEN-KEEPER.

Latest Brown Patch and Earth-worm Experiments

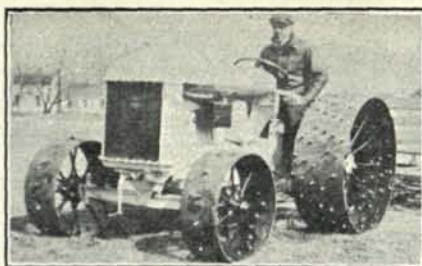
The Mallinckrodt Chemical Works has just issued a new booklet giving results of 1927 tests conducted by the United States Department of Agriculture and themselves. Besides giving many valuable suggestions as to proper methods, it also shows how their new mixture Calo-Clor, gives longer control of brown-patch per treatment and simultaneous elimination of earth-worms. For effectiveness and economy they state that Calo-Clor is unrivalled.

We suggest you write any one of their four branches, at St. Louis, New York, Philadelphia or Montreal and ask for a copy of the pamphlet entitled "Complete, Cheaper and Simultaneous Control of Large Brown-Patch, Small Brown-Patch and Earthworms."

The R. H. Golf Wheel

This new golf wheel for Fordsons has many advantages which appeal to the greenkeeper. Front wheels are 10" wide by 27" diameter, while the rear wheels are 16" wide by 42" diameter. The rims in each case are three-eighth inches thick and are fitted with Horner spuds, spaced in such a way to secure the best traction possible.

The edges of the rims are rounded so as to protect the turf and make for easier steering. They are very strong



The R. H. Golf Wheel

and will not bend or become dented when driven on hard surfaces.

A full set of these wheels which includes 230 square shouldered turf spuds sells for one hundred and forty-six dollars. Full particulars may be secured from R. H. Horner, Geneva, Ohio.

Pennsylvania Quint Makes Hit

The new Pennsylvania Fairway Quint, which was exhibited for the first time at the National Greenkeepers' Show in Detroit has made a great hit. The fact that it is lighter and simpler than the average fairway mower is attracting the attention of greenkeepers who are looking for the latest in fairway mowing equipment.

The new Pennsylvania Quint has the same flexible frame as the famous Pennsylvania Super fairway mower,

and is equipped with the same unique lifting device for the two outboard units. All the units are interchangeable, and the material and workmanship is up to the high Pennsylvania standard.

Complete particulars may be had from the Pennsylvania Lawn Mower Works, 1645 North 23rd Street, Philadelphia.

Elwin, Royer and Patisson Products

E. L. Winn, Inc., Elizabeth, N. J. are pleased to announce the fourth edition of their catalog which is filled with interesting things, valuable for use on the modern golf course.

The Elwin Proportioning Apparatus, well known in the golf field for



Delivered prices quoted
on request

The E. BIGLOW Co.
DEPT. G NEW LONDON, O.

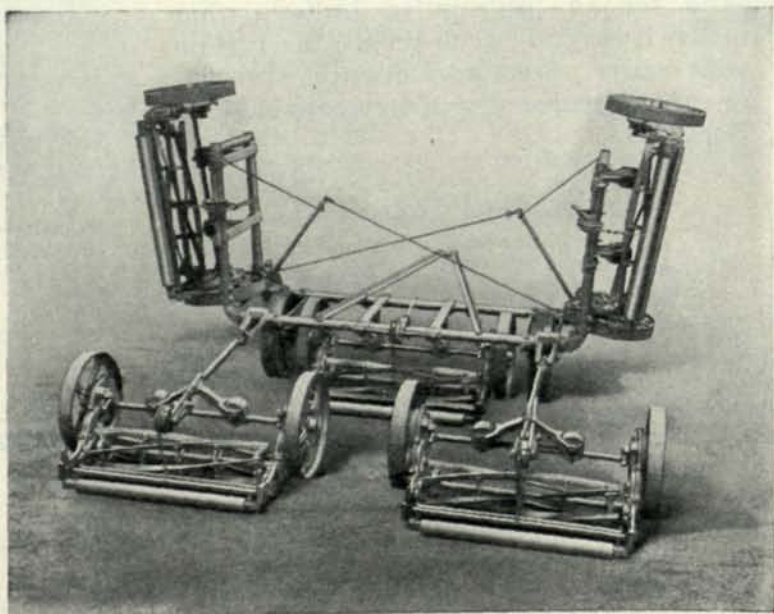
the past two seasons, is considered a very useful piece of equipment. It is inexpensive and reduces the work attached to the liquid application of various fertilizers and chemicals to a minimum.

The Elwin All-brass Putting Cup has also proved to be very popular. This is the only All-brass cup on the market. It is low-priced when consideration is given to its life.

The agency for the Albion Fertilizer Distributor for the United States is also announced by this firm. This is a new type of distributor and due to its efficiency to evenly spread fertilizers and chemicals it should be a very practical piece of equipment.

A. B. C. of Turf Culture

We beg to advise that the supply of this first edition is becoming limited and that if you wish a copy please send us an order after reading this announcement. Mr. Noer spent considerable time compiling this reference book and everyone interested in golf course maintenance and turf culture should have a copy. The book is put out in pocket size, has an embossed art leather binding, and is \$3 postpaid.



The New Pennsylvania Fairway Quint