

# The St. Albans Demonstration

Greenkeepers and Chairmen of Metropolitan District open season with exhibition of machinery at Long Island course

By G. W. MILNES

Manager, Metropolitan District Green Section  
Photographs by Edwin Levick, New York



*THE BEAUTIFUL ST. ALBANS GOLF CLUB ON LONG ISLAND  
In the foreground are the tractors ready to do their stuff*

THE first of the semi-annual exhibits and demonstrations of golf course equipment to be held in the Metropolitan district this season was staged at the St. Albans Golf Club, St. Albans, L. I., on Monday, May 14.

The meeting which was sponsored jointly by the Metropolitan Golf Association and the Long Island Golf Association was attended by more than 200 Green committee chairmen and Greenkeepers from throughout the entire district. The program was patterned closely after the Grassy Sprain and the Shackamaxon meetings of last year with of course a few changes reflecting the modern trend in golf course maintenance.

During the morning hours visitors were given ample opportunity to observe the continuous demonstrations of compost machines, spray rigs and fairway sprinklers, the latter particularly attracting the attention of the Greenkeepers and indicating that this phase of the art of

greenkeeping will come to the fore in the near future.

## Fairway Units Closely Scrutinized

SHORTLY after one o'clock, the following six manufacturers of fairways units—Roseman, Ideal, Worthington, Toro, Pennsylvania and F & N—lined up their outfits on the three fairways adjacent to the club house and for the better part of two hours the work of each machine was closely scrutinized by the visitors.

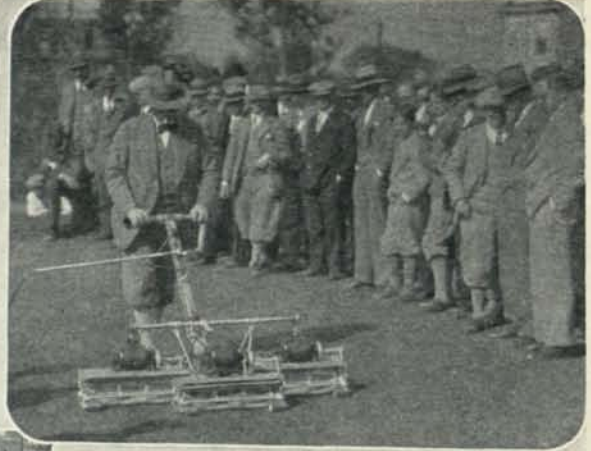
Great interest was shown in the Roseman outfit with the new converted Model A Ford tractor and also in the new Toro Whippet tractor, hooked to a 3-unit gang which if speed alone were to be considered would not allow comparison. The Knipping tractor, one of the smallest in the show, surprised all with its ability to cut through the heaviest rough when hooked on to the Pennsylvania 5-unit gang.

Following an interesting demonstration of power mowers in which some 15 models of various makes were shown, the hand greens mowers were put into action

### THE AFTERNOON PROGRAM

- 1:00 p.m. Tractors—Bolens, Caterpillar, Continental, Fordson, International, Knipping, Roseman, Toro, Toro Whippet, Worthington. Fairway Units—F & N, Ideal, Roseman, Pennsylvania, Toro, Worthington.
- 3:00 p.m. Power Mowers—Bolens, Ideal, Jacobsen, Moto Mower, Toro, Worthington.
- 3:30 p.m. Greens Mowers (Hand)—F & N, J. P. Super, Pennsylvania, Toro, Townsend, Worthington.
- 4:00 p.m. Greens Mowers (Power) — Jacobsen, Toro, Worthington.
- 4:30 p.m. Topdressers—MacGregor, Toro. Fertilizer Distributors—Albion, Sawco.
- 5:00 p.m. Worm Killers — Bichloride, Electric, Mowrah Meal.
- 5:30 p.m. Greens Sprinklers — Allen, Buckner, Campbell, Dayton, Double Rotary, Lark, Skinner, Triple Spray.

## Metropolitan Greenkeepers Flocked to St. Albans



The NATIONAL GREENKEEPER sent a special photographer to the St. Albans Demonstration, May 14. Reading from left to right—Top row; General View of the Power Mowers before the Demonstration, J. S. Clapper, Toro president showing his new electric putting green mower. Second row; The Worthington Fairway Unit, Ideal Sod Cutter with Fordson Tractor. Third row; The Ideal Power Mower (sitting at the left is W. E. Larkin, New York Toro Distributor), Reade's Electric Worm Eradicator. Bottom row; Cultor Continental Fairway Unit and T. P. Sauer Green's Mower, a high class English importation which the makers call "The Rolls Royce of Putting Greens Mowers."—Photos by Edwin Levick, New York.

and proved the greatest interest with the new Townsend lightweight, 10-blade, machine proving the sensation, perhaps, of this event. Of interest also was the J. P. Super Lawnmower, imported from England expressly for the St. Albans meeting.

### Toro Shows New Electric Mower

Next were shown the three makes of power putting green mowers, including two models of the Jacobsen, the Worthington Overgreen and the new electric driven three unit Toro machine which was an experiment only as it is not expected to be on the market for at least a year and succeeded in bringing forth much comment among those present. Greens topdressers, worm eradicators and greens sprinklers followed in the order shown.

Following the dinner in the evening the meeting was addressed by Dr. John Monteith, Jr., of the U. S. G. A. Green Section who spoke on the plans for new experimental work to be carried on under his direction this Summer at the Arlington Turf Garden. After Dr. Monteith had concluded his talk, there followed an unusually interesting period of informal discussion, during which many members of the greenkeeping profession put questions to Dr. Monteith, eliciting in reply his ever-ready advice and help.

The meeting was concluded with an announcement which was undoubtedly the high spot of the day's events.

Get Our Prices On....

## Tractors - Mowers - Hitches

E. G. STAUDE, MAK-A-TRACTOR CO.  
2630 University Avenue St. Paul, Minn.

This was the talk by Mr. Harry P. Kidd, of the Metropolitan Golf Association Executive Committee, telling of the project for the establishment of six experimental plots in co-operation with six golf clubs in the district, which will be under the direction of the Green Section at Washington with the actual work supervised by Mr. G. W. Milnes, of the Metropolitan Golf Association acting for the parent body.

### Three Clubs Offer Land

**A**LREADY three clubs have offered land on their course for such plots which are to be 50 x 100 ft. in extent and it is expected that an announcement will be made shortly as to the remaining three when the names of the clubs cooperating in the plan will be made known.

The discussion following the announcement showed that this project meets a long felt need for local testing plots which would supplement the work done at the Arlington Turf Garden at Washington.

## Control Brown-Patch

Save \$600-\$1000 this year by using

# CALOGREEN

(Special Finely Powdered Calomel)

or

# CALO-CLOR

(Calomel-Corrosive Sublimate)

### THE U. S. DEPT. OF AGRICULTURE RECOMMENDS

these mercury salts. Their latest experiments prove conclusively that calomel (Calogreen), and calomel-corrosive sublimate mixture (Calo-Clor) give longer protection and better control.

Calogreen and Calo-Clor are pure chemicals, 100% active, containing no fillers, fertilizers, or other inset substances.

3 ozs. per 1000 sq. ft. will give complete control.

Other brown-patch remedies, which perhaps you used last year, required over FIVE times the quantity.

16 ozs. per 1000 sq. ft. to give complete control.

As the cost per pound of all these remedies is approximately the same, you can control large and small brown-patch at 1/5th your last year's bill—if you use the latest methods based on government experiments.

Write for free booklet describing these experiments, with directions for using CALOGREEN and CALO-CLOR.

## MALLINCKRODT CHEMICAL WORKS

St. Louis

Montreal

Philadelphia

New York