

# THE MARKET PLACE

**H**AVE you read the article by John Morley on the first page of this issue about peace and prosperity for 1928? Every manufacturer of golf course equipment and supplies should read that page.

With all the new courses starting up throughout the country, more and more good greenkeepers will be required to keep up with the growth. But what about the added equipment and supplies that manufacturers will be called upon to furnish?

Conditions are settling in the South, particularly in Florida, while in Alabama and Georgia considerable capital is being invested in golf courses. This is also true of the Carolinas, and other winter resort states. An increase above normal is to be looked for in all southern golf activities.

Perhaps one of the most valuable outlets for the golf course trade lies in South America. Ever since the war, immigration into our sister continent has been heavy. Agriculturally and industrially South America is wide awake and busy developing its great natural resources. Wherever there is well-capitalized business, there also will be found the recreation so necessary to the well-being of those engaged in its progress.

Some of the well established concerns in the golf trade advise that an appreciable amount of equipment and supplies for golf courses is being shipped from the United States to the foreign trade. With good sales methods, a steady increase in foreign business can be expected. In many other manufacturing fields this holds true, and manufacturers in the golf field will find it so.

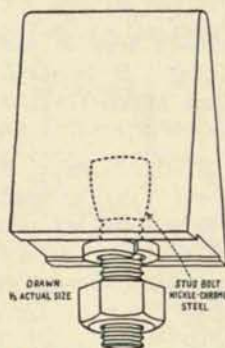
Already the NATIONAL GREEN-KEEPER is reaching beyond the borders of the United States and Canada. As time goes on it will be an increasing aid in solving the winter sales problem of golf course manufacturers. A healthy southern demand and a campaign for foreign business—that's the answer.

## J. H. Connors New President Republic Rubber Company

**A**T the meeting just held by the Board of Directors in Company offices at Albert Street, Youngstown,

Ohio, Mr. J. H. Connors was elected President of The Republic Rubber Company.

Mr. Connors, whose connection with the rubber industry covers a period of over twenty years, joined the Republic staff six years ago. He brought to Republic a wide acquaintance and experience, and under his active administration the company has been rehabilitated to the point of an efficient aggressive institution whose forward progress has created much favorable comment. In addition



*The R H heavy duty wheel spud*

to a standard line of mechanical rubber goods, and tires the company's lines have been broadened to include various such new lines including automotive specialties, in which field Republic has achieved distinct prominence.

The elevation of Mr. Connors to the presidency of Republic will give wider scope to his executive and sales ability. Mr. John J. Watson, formerly President, continues as Chairman of the Board of Directors.

The Republic Rubber Company closed a successful year October 31st, 1927.

## New Power Putting Green Mower

**T**HE Jacobsen Manufacturing Company, Racine, Wisconsin, is speeding up production on their new 19-inch Power Putting Green Mower



*Jacobsen power putting green mower. New model cuts faster*

in answer to a demand already indicated by early buyers. This new mower is entering its second season after demonstrating its ability to negotiate undulating greens and do beautiful work on creeping bent and other ultra-modern greens. The narrow width, light weight, roller traction, special seven-blade, high speed cutting reel are some of the features incorporated in this mower. A special grade of aluminum castings account for light weight combined with adequate strength.

Notable improvements have also been made in the Jacobsen 24-inch Power Putting Green Mower. The motor power has been increased, the cutting reel speeded up. The Jacobsen Company state that it is practical for any modern green with the exception of those with extreme undulations or where the most difficult conditions are to be met. Some courses find the two mowers an ideal combination for speed and efficiency.

\* \* \* \*

## Roseman 1928 Tractor Mowers

**R**OSEMAN 1928 tractor mowers are equipped with malleable (non-breakable) side frames and bed knife shoes and special machine cut gears.

Next spring will see the advent of a new elevating arrangement built for those courses where the Greenkeeper finds it necessary to cross roads, street car tracks or places where cutting of grass is not desired. Photographic cuts of this new lifting arrangement will be obtainable in the month of February.

\* \* \* \*

## Special Lug for Heavy Hauling

**M**ANY times during each season the greenkeeper needs to do some soil preparing, construction, grading, heavy hauling, or other work requiring a greater amount of wheel footing than his small turf-spud equipped tractor wheels will give.

Consequently, many of these tasks are put off, or time and money is lost in hiring teams or grader tractors to do this work.

The tractor wheel spud or lug shown in the accompanying sketch is



quickly attached, and is made to fit any tractor.

Write R. S. Horner, Geneva, Ohio, giving him the make of your tractor, and a sample spud will be mailed for your inspection.

\* \* \* \*

### Two Useful Rakes

Introduced by

Stumpp & Walter Co., New York

THE George Low rake illustrated on this page forms ridges in the sand traps, and compels the player to use a niblick instead of rolling his ball with a putter. This rake is used on nationally known championship courses, noted for their careful grooming. The traps at Oakmont Country Club, Oakmont, Pennsylvania, show the marks of the George Low rake, and Emile Loeffler, greenkeeper at this club has received many compliments on the well-kept appearance of his traps.

Southern greenkeepers in particular will be interested in the Sawco lawn cultivator rake, pictured herewith, as it is a valuable implement to use in renovating Bermuda greens



The George Low sand trap rake makes a fair lie

for winter turf. It quickly establishes a roughened area in preparation for re-seeding. It is sturdily constructed and carries fourteen sharp-pointed and sharp-edged knives.

A copy of the Stumpp & Walter booklet, "Golf Turf" contains much useful information for the greenkeeper, as well as illustrations of

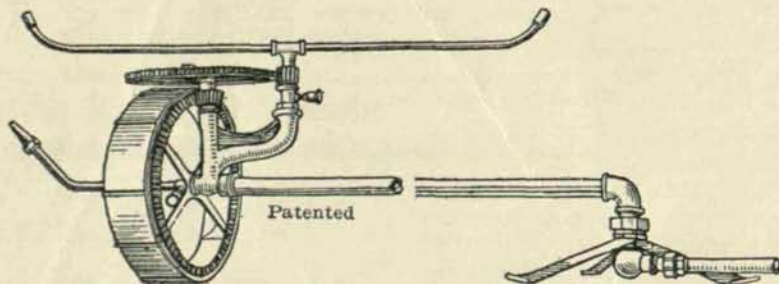
many items built to aid him in maintaining his course. Every greenkeeper should have a copy of "Golf Turf" on his table.

\* \* \* \*

### New Barnes Outlet Box

THE only item the Barnes Mfg. Co. at Mansfield, Ohio, is making in the way of equipment outside of power pumps for golf courses is a cast iron outlet box. Mr. T. R. Barnes advises, "We have just about completed patterns for a new outlet box much larger in size which will have sufficient capacity to take care of 100 feet of 1-inch hose or 150 feet of  $\frac{3}{4}$  inch hose. This will be a substantial box and strong enough so that a tractor mower can travel over it without damage. It will have a lock so that the hose need not be removed but will be kept where it is ready for use at all times and avoid dragging around the course. We believe there will be quite a saving to country clubs on this fixture."

Circulars showing this new outlet box will soon be ready. Write now for a copy.



The Economy travelling sprinkler covers a large area



Sawco lawn cultivator rake. In use on many Southern courses in renovating Bermuda greens

## In the Berkshires of Ohio

(Continued from page 17)

fescue turf, the blue grass and red top dwindling away. In a couple of years our greens were such a heterogeneous mixture of grasses and weeds that it seemed hopeless to get them to the point where they would be called real putting greens. Hearing of the wonderful results other clubs were getting from creeping bent stolons we decided to try some. Mr. John Morley of Youngstown kindly supplied us with enough to start a green. We planted our number fourteen and a little later on with clippings from this green we planted number sixteen. In a few months these two greens were so much superior to our others that we decided to change them all to bent.

### Washington Bent Proves Best

We then bought \$100.00 worth of Washington strain bent and set it out in a nursery. From this nursery we

have been able finally to change over all our greens and several tees to bent. We plan eventually to change numbers fourteen and sixteen greens to the Washington strain as we find it much superior to others.

### Found Lime in Sand

In top dressing our greens we were using a sharp lake sand which upon test showed a very high lime content and encouraged the growth of chick weed. We discontinued the use of the sand and increased our sulphate of ammonia which checked the growth of the chick weed considerably.

We started out with a very poor piece of land but I am pleased to say it is now showing the results of our labor.

In overcoming some of the handicaps we started with, we have probably learned many things that greenkeepers on some courses never have to contend with. Any information along these lines will be gladly passed along to those wishing it.