

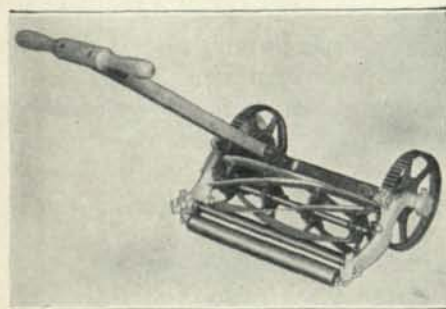
THE MARKET PLACE

Toro introduces New Hand Mower

THE Toro Manufacturing Company, Minneapolis, announce a number of new items for next year.

Among them is the Silver Flash Hand Mower which they feel will meet a strong need among the clubs for a high grade hand mower for cutting tees and approaches to greens.

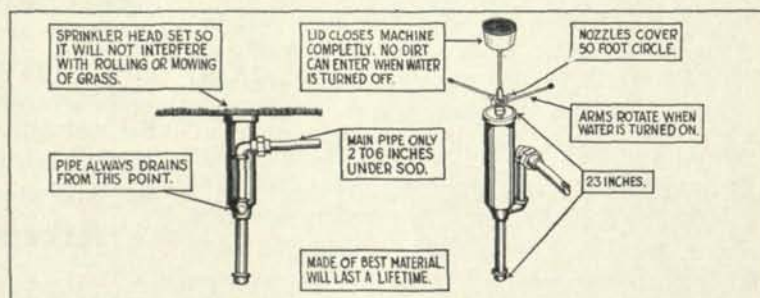
Their new mower, which they have named the Silver Flash, is accurately



The new Toro "Silver Flash" Lawn Mower

machined and fitted and is exceedingly light running and also light in weight.

It is said to be a very fine mower by those who have used it, and the Toro Company will be glad to send any one illustrations and literature.



Diagrammatic sketch of new sprinkler head, manufactured by the Dayton Irrigation Co.

New Hitch for Bulldog Mowers

THE accompanying photograph shows rather a unique hook-up of the Bulldog 3-unit gang mowers and a roller also in back of a Fordson tractor. This outfit is owned and operated by the Saltville Golf Club, Saltville, Virginia. As you will note, they have the roller mounted in back of the tractor between the two wide wheels. Then they have arranged an off-set hook-up for the gang mower at the side so that in one operation a man cuts a 72 inch swath and with his wide tractor wheels and roller, also rolls a 22 inch space at the same time.

* * * *

New Hoseless Watering System

THE Dayton Irrigation Company of Dayton, Ohio, is speeding up production on their large under-

ground sprinkler head to which they have added a new feature of growing sod in a cup mounted on the top or lid of the sprinkler head, a new feature for golf greens.

This system can be installed on any green, old or new without spoiling it as the pipe lines are laid only about four inches below the sod line. Each sprinkler head has a positive drain and there can be no freezing of the water lines during the winter months.

It has also been designed for watering fairways.

Detailed information gladly furnished upon request.

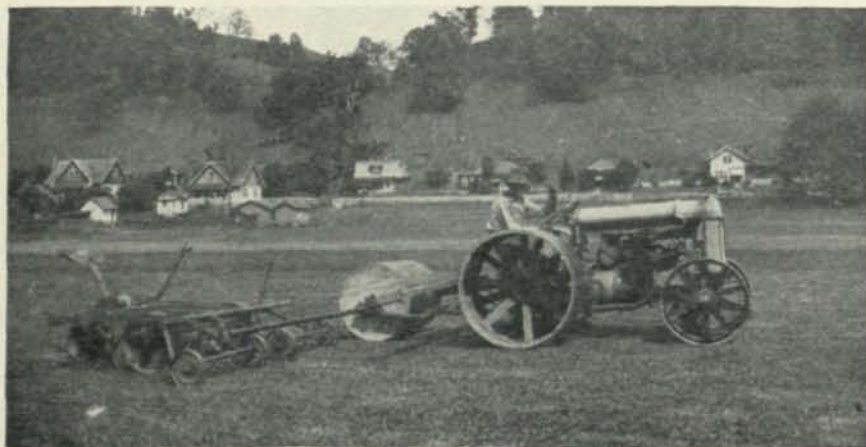
* * * *

Pebble Beach Uses Royer

JOE P. MAYO, superintendent of the Pebble Beach Country Club, Del Monte, California, sends us the accompanying photograph of a Royer compost mixer, with the following letter which describes how he connects it up on a Ford chassis:

"Am using Royer nearly every day on one of the courses. Have it mounted on Ford Chassis, and use power from engine.

"We cut the drive shaft just back of the gas tank so that belt from pulley will clear tank up to the pulley on Royer. The housing of drive shaft is cut short of where we put the bearing and held in place. The drive



Ideal mower and roller hitch described above

shaft is horizontal with universal joints, and belt has never given any trouble. We load in the side just the same as you do with the power driven one you are now selling. But being on Ford frame it is higher, and just right to load into Ford one ton truck. We lift end gate and back up to machine and pull away and close end gate."

* * * *

Economy Sprinkler in the East

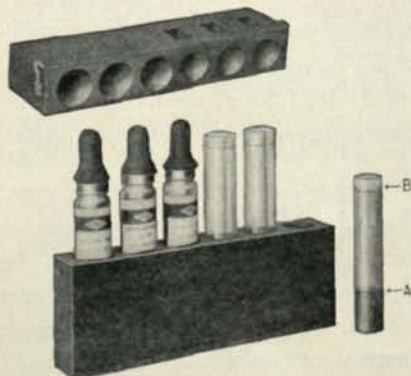
EASTERN representatives of the Economy Irrigation Company, of Seattle, Washington, covering the states of New York, Vermont, New Hampshire, Maine, Massachusetts, Connecticut and Delaware with the eastern portion of Pennsylvania, will be Mr. O. O. Clapper of the New England Toro Co., Newton, Mass. Mr. W. E. Lafkin of the New York Toro, and Mr. T. L. Gustin of the Philadelphia Toro.

Arrangements have been made with these three firms to interest golf clubs in the Economy Travelling Sprinkler and other models manufactured by this company.

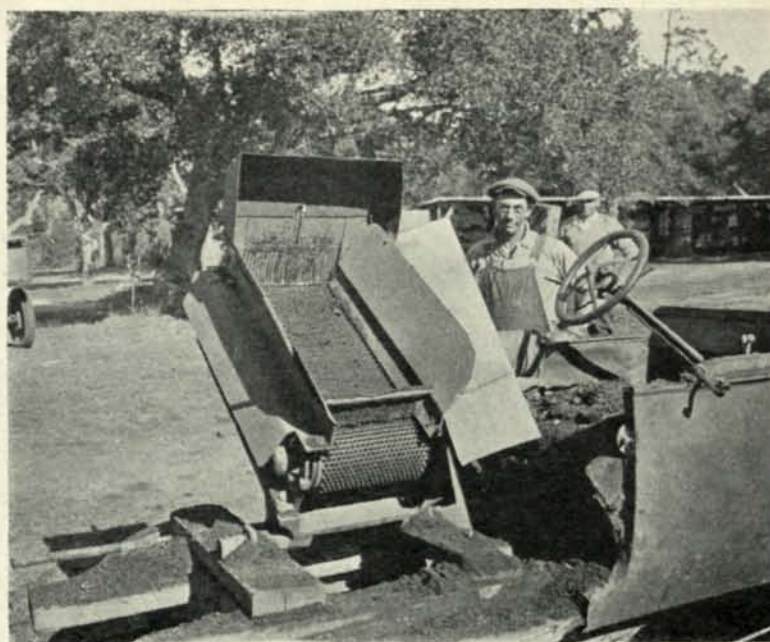
* * * *

Testing Soil Reactions

IN order that the test for acidity and alkalinity of the soil may be made by the greenkeeper, the LaMotte Chemical Products Company, of Baltimore, Md., has placed on the market two sets, the LaMotte-Morgan Soil Testing Set and the LaMotte-Kenny Indicator Field Set.



The Kenney Indicating set for soil testing which will be demonstrated at Detroit convention



Royer Compost Mixer mounted on Ford chassis, in use at Pebble Beach Country Club, Del Monte, Cal.

Both of these sets are extremely simple in operation and enable a worker to determine in a few minutes for just what plants his soil is suited, or what treatment is necessary for changing the reaction to suit the plants which he wishes to grow.

One of the most important parts of each set is a pamphlet which gives a list of all the common plants, with their soil reactions, that is the acidities or alkalinities at which they thrive best, and also full instructions for changing the reaction of the soil to any desired degree.

* * * *

Littleford Compost Screen

THE accompanying photograph shows a compost screen manufactured by Littleford Bros. of Cincinnati, Ohio.

The screen has a rated capacity of fifteen cubic yards per day and is free from complicated parts. Screening cylinder is 26 inches in diameter by 60 inches long and is arranged so that wire screen can easily be replaced when worn out. Heavy cast iron fly-wheel insures constant motion.

While the standard screen is hand operated pulleys are furnished when

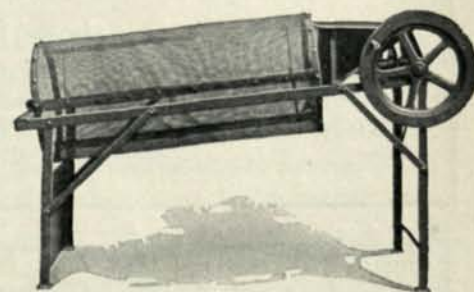
it is desirable to use mechanical power.

Littleford Bros. will be glad to furnish full details to anyone interested.

* * * *

New Tee Marker

JUST before this magazine went to press, a new tee marker was laid on our desk for inspection. It is of heavy vitreous enamel, round



Littleford compost screen described herewith

in shape, with black background, and white letters, and makes a very attractive appearance.

This marker is called the "Luster-lite," and is manufactured by the Chicago Vitreous Enamel Product Company, at Cicero, Illinois. A folder describing it will be mailed upon request.