

Equipment for Eighteen Holes

Address of ELMER F. AFFELDT, Greenkeeper,
Glen Oaks Golf and Country Club, Great Neck, L. I.,
Before the Metropolitan Association of Greenkeepers,
New York, August 8, 1927



Elmer F. Affeldt

AS a member of your committee on the Care and Housing of Equipment I would like to have worked in co-operation with the other members of the committee, but the time for the preparation of this paper was very short, considering our trying duties at this time, and the distance between did not allow us to get together.

I have worked out a list of what I consider a minimum of equipment needed to operate an 18-hole course. This list is itemized on the following page.

When I made this list up I may have been somewhat conservative for I had in mind a new course just starting off on its journey, and should it live and grow it will acquire more of the items most needed as the needs manifest themselves. Even then I like to keep within limited bounds as most clubs just starting out are usually spent out after purchase of the ground and cost of construction. By this I do not mean skimping on any of the items but having enough equipment to do the work well and without delay, but carrying no surplus at least the first year. This will also prove wise because improvements in golf course equipment are quite rapid. Better things are coming out yearly.

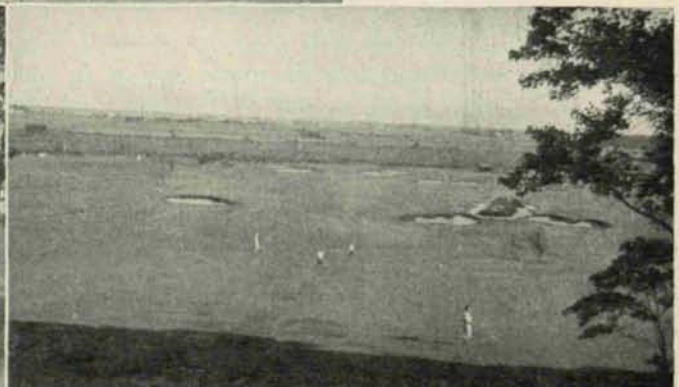
I have not attempted in this paper to name any specific make of machine as some of us have a preference for one manufacturer's product and some for another. Nearly all of the standard equip-

ment on the market today will do good work if properly operated and cared for. I purchase because of durability, simplicity of adjustment, ease of repair and ability to get repair parts quickly.

I also have made it a practice to make all repairs at home where possible and no special equipment or machinery is required. I find we can do much without an expert mechanic or an elaborately equipped shop.

In somewhat over twelve years of experience, it has not been my good fortune to have been connected with a club that has had buildings enough, or large enough to properly house its equipment. The larger items such as fairway and rough mowers, all rollers, soil screen, etc., usually must stand out in sunshine and in rain from sometime in April until October or even November, and it is really remarkable how well they do the work considering what little care they get.

In the fall we usually jam them in somehow and somewhere under a roof if nothing more, that we hope will protect them from the ravages of the winter with its snows and sleet. While the average greenkeeper may not be able to do any better, it is poor economy, as under these conditions equipment will deteriorate very quickly.



Upper, seventh green; lower left, thirteenth green, and lower right, eighth fairway at Glen Oaks Golf and Country Club, Great Neck, L. I.

Equipment Needed for 18-Hole Course

- 1—heavy duty tractor, Fordson or Toro, equipped with smooth and rough wheels, also power pulley
- 1—light tractor, Staude, Worthington or Roseman
- 2—dump carts, trailing type
- 2—Ford ton trucks, dump bodies
- 1—manure spreader
- 1—fertilizer drill
- 1—2000 lb. roller
- 1—500 lb. hand roller
- 3—light putting rollers
- 1—soil screen, power type
- 1—2½ H. P. gas engine to operate screen
- 1—5-unit fairway mower complete with frame
- 2—extra 30 in. units for above
- 1—rough cutting mower, farm type, sickle bar
- 6—putting green mowers
- 6—lawn mowers
- 4—scythes, 6 hand-sickles, 12 scythe stones
- 2—flexible steel mats for rubbing in top dressing
- 1—Champion sod cutter
- 2—sod lifting irons
- 2—turf edging knives
- 1—set turf repairing tools
- 6—round point shovels
- 12—square point shovels
- 6—spading forks
- 6—manure forks
- 6—spades
- 12—wood lawn rakes
- 12—iron rakes
- 3—trap rakes
- 3—R. R. picks
- 3—Mattocks
- 1—50 gal. barrel on wheels with sprinkler boom
- 1—5 gal knapsack sprayer
- 1—proportioner
- 12—green sprinklers
- 1200 Ft. ¾ in. hose
- 1—fairway sprinkler (3 units)
- 500 Ft. 1 in. or 1¼ in. hose
- 18—tee stands
- 18—sets tee markers
- 24—hole rims
- 24—flag poles, 18 flags
- 3—ball washers
- 1—lawn cleaner rake
- 1—lawn cleaner brush
- 6—bamboo rakes
- 1—water grindstone, 1 emery grindstone, 1 sickle grinder
- 2—chopping axes, 1 cross cut saw
- 1—carpenters hand saw, Xcut
- 1—carpenters hand saw, rip
- 1—nail hammer
- 1—set pipe dies ¼ to 1 in., 1 set pipe dies 1 to 2 in., optional
- 1—pipe cutter, optional
- 1—14 in. Stillson wrench, optional
- 1—18 in. Stillson wrench, optional
- 1—24 in. Stillson wrench, optional
- 1—36 in. Stillson wrench, optional

Shop Equipment Also Optional

- 1—post drill and drills ⅛ to ½ in.
- 1—iron bench vise
- 1—blacksmith forge and anvil
- 4—ball pein hammers assorted weights
- 1—small hand drill and drills
- 1—breast drill and drills
- 1—hacksaw frame and blades
- 6—screwdrivers assorted sizes
- 12—flat wrenches assorted sizes
- 1—socket wrench set
- 12—small hand oilers
- 4—small pressure oilers
- Stock of assorted bolts and nuts and lock washers.

I am firmly convinced that it would be real economy for any club to build what I would call a golf barn, a single unit or on the ell plan and two stories above ground. On the ground floor the motor equipment and other heavy implements with the shop in the center if possible. The upper floor would house seeds, fertilizers, and the smaller and lighter equipment. A home-made elevator could be installed to lift and lower supplies and equipment.

After outside operations on the course have come to a halt, all machinery and other equipment used during the summer should be carefully gone over, cleaned, worn parts replaced, and well painted with a good paint that will stand the weather. All mowers should be carefully

sharpened or sent away. I prefer to have them done at home.

Around the new year is also a good time to place orders for any new equipment needed for the following summer. This is especially true where it requires the red tape of passing through the various club committees for the necessary O. K. before final placing of the order with the dealer. We all know the importance of having supplies and equipment at hand when spring opens.

The spring rush (and often it does come with a rush), getting ready and set for the opening day means work and worry. Then is the time you will appreciate having your materials at hand and your equipment in A1 shape and I am sure you will be relieved of a lot of mental anguish.