

Turfgrass Matters



November 1993, vol. 45, no. 9

Mid-Atlantic Golf Course Superintendents Newsletter

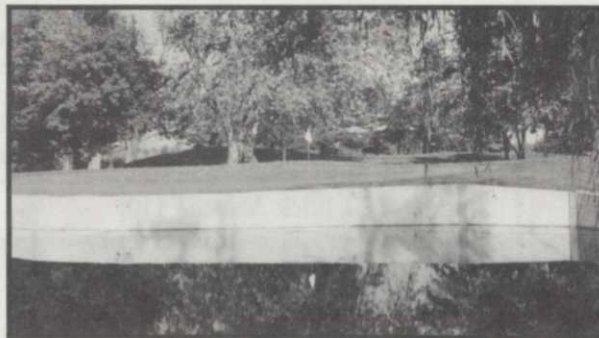
Ron Weaver to Host Team Championship at Swan Creek on November 9

On November 9 superintendent Ron Weaver will welcome the MAAGCS to the Golf and Country Club of Swan Creek for its annual Four-man Team Championship. The club is a private 18-hole facility. The course is a par 70 that measures just under 6,000 yards, but don't be fooled by its lack of length. With its tight landing areas and narrow fairways, many big hitters would be wise to leave their drivers at home.

The club was built with a nine-hole course in the mid-1950s, then in 1977 land was acquired, Ed Ault was hired as architect, and nine new holes were built. In 1981 the course was sold by the membership at public auction to its current owners, Fred and Teresa Hawkins. They got the course for a steal and have done an amazing job with it. They took a nearly bankrupt, struggling club, made many vital improvements, and turned it into a thriving club with 450 very active members.

Greens on the course are a mixture of old bents, new bents and Poa. They are mowed daily at 11/64", but they are cut down to 5/32" for events like member-guest and club championships. "I'd like to keep them at 5/32" but there seems to be a fine line there. At the lower height Anthracnose and Summer Patch really can get a foothold," says Ron. Greens are Verticut four times per year, groomed weekly and topdressed

monthly. This helps keep the ball rolling true and the speeds a little more in line—even at 11/64". They receive 3.5 to 4 lbs. of nitrogen throughout the year, 2.5 lbs. granular in the spring and fall



The Seventeenth at Swan Creek

and a pound's worth of soluble, spoon feeding in the summer months. "I also apply up to a pound of Cutless in a year," says Ron. "It makes the Poa look like hell, but I'm still not convinced much progress is being made."

Fairways and tees, which are a mixture of Ryegrass and Poa, are cut three times a week at 11/32". They get 2 lbs. N a year and are now on an overseeding/Prograss program.

Ron is a midwesterner who has just survived his fifth season in the Mid-Atlantic. "I've got to admit that there are plenty of days in July and August when the weather has me 'longing for my Indiana home' and praying for a nice midwestern-type cold front!" Ron was a chemistry major at Indiana University before transfer-

ring to Purdue where he earned his B.S. in Agronomy in 1983. "But don't confuse me with the Boiler-makers, my heart is still all Indiana Hoosiers." His golf course experience includes five years at

the USX Supervisors Club in northwest Indiana where he started changing cups and became the assistant after three years. He then moved to Cog Hill in Lemont, Illinois—home of the Western Open PGA stop. It was a real learning experience for me. I was the only assistant at a 72-hole golf

complex. We had four different courses with four distinct types of
See Swan Creek, page 8

Golf: For details on playing in the tournament, see **Golf Notes** on page two.

Dinner: Cocktails 5:00-6:00, dinner at 6:00. \$30. Reservations essential: 301-381-0030.

Directions: From Baltimore/ Washington and just about everywhere. Take I-95 north. Approximately 20 miles north of the Baltimore Beltway, take the Aberdeen exit (22 East). Go 2 miles, take Rte 40 East toward Havre de Grace. Go one mile to second light. Turn right on Oakington Rd. Road comes to a Y after the bridge. Go straight. Follow Oakington for 2 miles. Golf course and clubhouse are on the left side.