

Turf Talk

May 1990, vol. 43, no. 3

Mid-Atlantic Golf Course Superintendents Newsletter

Bill Shirk hosts May 8 meeting at Prospect Bay Country Club

The Superintendent-Pro tournament will be hosted by Bill Shirk, CGCS, of Prospect Bay Country Club on May 8th. Bill got his start in golf course maintenance by working at the Sparrows Point Country Club under the direction of Alex Watson, CGCS, and assistant superintendents Bob Orazi, CGCS, and Dave Cammarota. After graduating from Penn State in 1972 in the turf grass management course, he went to Seaford Golf and Country Club in Seaford, Del. to assume the role of Golf Course Superintendent.

In the fall 1978, Bill became the golf course superintendent at Prospect Bay C. C. He completed the certification program from the Golf Course Superintendents Association of America in May of 1989. His wife Cheryl Ann is the nurse manager of the intensive and critical care unit at Easton Memorial Hospital. He has two children — Adrian, 8, and Ashley, 6. They reside in the community of Prospect Bay.

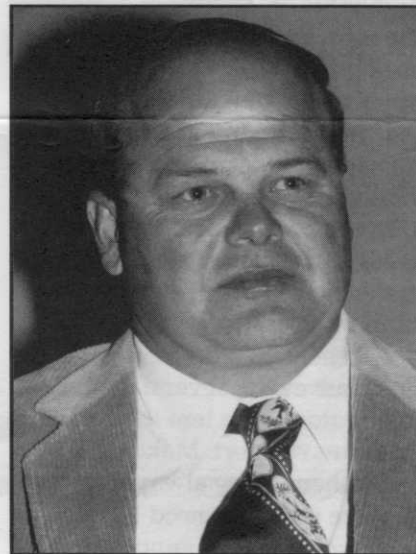
Prospect Bay Country Club is a private club owned and operated by the Prospect Bay Homeowners Association. The community consists of 925 acres, 322 single housing lots, an 18-hole golf course, four tennis courts, a pool, and a beach area and boat marina. The community boasts six miles of shoreline on the Chesapeake Bay. The project was built by Maryland Community Builders, Inc. and the golf course was opened for play in May of 1981.

Although a young golf course,

Prospect Bay has seen many changes and many more projects are in the planning stage. The irrigation system was replaced after two years of operation. A new Toro system replaced the original Binar system. The totally automated Toro system irrigates tees, greens and fairways.

The source of water for the system is the community owned water treatment plant. All the bunkers are being rebuilt with new sand being added and new drainage systems installed. An additional 17 bunkers have been designed with the goal of having them completed in the next two years. In the fall of 1990, two greens, #13 and #16, are scheduled to be entirely rebuilt. And if that isn't impressive enough for you, the next project on the drawing board is a \$2.5 million club house.

When Bill isn't acting as project manager, he does actually find some time to maintain the existing golf course. Actually, as you will see on the 8th, he does a very impressive job of maintaining the facility. The greens are Penncross bentgrass and were built to those ever-changing USGA specifications. They are mowed at 5/32", on a seven-day schedule. The greens receive four to five lbs of actual nitrogen per year with an application of Scotts TGR during the fall. The tees were originally seeded to A-34 Bluegrass, but have been converted to Penncross bentgrass. They are mowed three times per



week at 3/8" and receive an application of Scotts TGR in the spring and the fall. The fairways were also originally seeded with A-34 Bluegrass and to date this variety has worked well in the heavy clay soils endemic to Prospect Bay. They are mowed three times a week at 5/8", and receive three to four lbs of nitrogen per year. Phosphorus and potassium are applied according to soil tests done by Brookside lab.

Directions: From Washington and Baltimore: Take Route 50 east to the Bay Bridge. Once across the bridge go seven miles (1st red light), turn right and go to the stop sign. Turn left on Route 18, go 0.7 miles and turn right on Perry's Corner Road. Continue 2.4 miles and turn right on Prospect Bay Road. Go one mile and turn right at the lighthouse. The club house will be on the left.