



# Mid-Atlantic Association of Golf Course Superintendents NEWSLETTER



VOLUME XXXX

MAY 1987

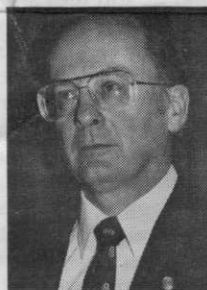
NUMBER 3

## President's Message

Our meeting at Chestnut Ridge Country Club with our partners in the golf business, the Golf Professional, promises to be a repeat of our past successes. This is our fifteenth annual get together and the fifth year that we've played for the Clare Emery Trophy. Please come to the meeting and join the festivities even if you aren't going to play in the tournament, I'm sure a good time will be had by all.

Congratulations to those of you that got your reservations in early enough to join us on the Spirit of Washington for our trip down the Potomac on Saturday, June 6. To those of you that aren't attending this Ladies' Night, please get your reservations in early next time.

As most of you know, the Mid-Atlantic is losing one of its most well known and respected members. Virgil Robinson is moving to Phoenix as Director of Agronomy and Maintenance for Desert Mountain Development Corporation. We all wish Virgil the best in his new position and, of course, want to thank him for all his contributions to our association over the years. I personally want to thank him for the excellent job he has done as our Membership Chairman and Board Member. We wish you the best Virg, we'll all miss you.



Lee Dieter, President

## Superintendent & Golf Professional Team Up for Tournament

On May 12th, Super's will play a net best ball event with their golf professional. Defending champions will test the field on the tough Chestnut Ridge course located in Baltimore County.

Measuring 6,172 yards from the white tees and 6,560 from the blues, Chestnut Ridge is viewed as a true test of golf with its rolling terrain and 4,000 to 6,000 sq. ft. greens. Established in 1957, you'll hopefully miss the water hazards and shoot close to the par 71. This event is favored by both supts and pros as a true "FUN DAY".

Mark Bertoldi has been superintendent of Chestnut Ridge Country Club since 1982. A graduate of Penn State with a B.S. degree with special studies in Turfgrass, Mark tenured for two years as an assistant at Fort Meade G.C. and Chestnut Ridge prior to moving into his present position. Mark doesn't boast much about his modest handicap on the tee, but waits and enjoys any action that comes his way. By the way, his game has slipped a bit to a 3.

Mark has been very busy reconditioning and adding blue teeing areas. Progress has been applied to both tees and fairways with excellent results and he plans to continue both programs. Greens are a combination Bentgrass/Poa built on existing soil, with 5 USGA sand greens. They are all mowed 7 days a week, at times double cut at 5/32", and receive 3#N annually. Tees are mowed 3 to 4 times a week at 1/2" and receive 4#N annually while fairways are mowed at 3/4" 3 times a week and receive 4#N.

Presently Mark's top priority is to secure adequate bids for repair work to his irrigation dam. Considerable damage occurred in 1978 from Hurricane David and the drought conditions of the past several years clearly pointed out the need for repairs.

The day's tournament events are as follows: Lunch is available starting at 11:00 a.m. with hot dogs and hamburgers being served outside. The shotgun tournament will begin play around 12:30 p.m. Towel service is provided and while a coat rack will be available, you may want to leave your change of clothes in your vehicle until your round is completed, then bring them into the locker room. Cocktails will begin at 6:00 p.m.

(Continued on page 3)

## An Open Invitation

The 9th Annual Mid-Atlantic/Musser golfing event will be held October 27, 1987. Woodholme Country Club and Steve Potter, Superintendent, have made a solid commitment to supporting this event and we look forward to playing it on a fine course in tournament condition. Sponsored by the MAAGCS and Maryland Turfgrass Council, the golfing format is a four man team playing best gross and net ball.

Proceeds go to the Musser Foundation, originally established to support research and education in turfgrass science. Now, something new has been added! The contributions in TURF MANAGEMENT by fellow superintendents like yourself, have been invaluable in reducing injuries to children. As an outgrowth of these efforts, the Directors of the Musser Foundation approved, and in conjunction with the United States Department of Agriculture, organized the Safer Sports Turf Now National Sports Turf Council.

The goal was to reduce injuries on athletic fields, and from there move into the repair of deplorable playground facilities. Most felt that the money spent maintaining these areas was probably applied and used at the wrong time of the year. Something as simple as an appropriate fertilizer program might mean the difference between grass, dirt or worse?

Many superintendents have been hesitant to participate, possibly because of the potential for failure or worse — criticism! Well, we all know that a thin skin toughens fast in this business, so let's get involved. If you're not convinced of the need for such an effort, visit your local ball fields and playgrounds. With development eating up the existing open spaces, those remaining are precious few and see more concentrated usage. Your roughs could easily become a happy playground if current play areas are not maintained to stand high impact use. Let's try to help. Contributions can be pledged, tax free so that everyone can say, "I was there."