



Mid-Atlantic Association of Golf Course Superintendents NEWSLETTER



VOLUME XXXX

JUNE 1987

NUMBER 4

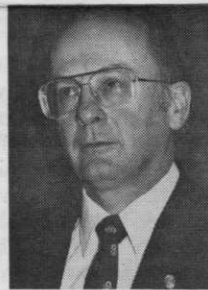
President's Message

Our fifteenth annual Superintendent-Professional Tournament is now history, congratulations to Bob Orazi and John Haines of Hunt Valley Country Club, the winners of the Clare Emery Trophy. Mother Nature didn't co-operate, but we're used to that aren't we? We all finished after a brief rain delay and had an enjoyable social hour and dinner with our partners in the Golf Business. Thanks again to Chestnut Ridge and our host Mark Bertoldi.

Our June Meeting will feature a different format, after a morning meeting we will have lunch and then have a shotgun start for our golf. We're trying this at the request of our host James Kelley and the Green Hill Yacht and Country Club, let's show them we care with a big turn out. I'm sure that we'll see a lot of our friends from the Eastern Shore there. Try the different format and get home early or stay and eat some crabs and enjoy some of that great shore hospitality.

The problem of accurately predicting how many of our members and guests will attend our meetings and play golf continues to plague us. When we have to guess the attendance we have situations that cost the Association money and misunderstandings with our hosts. Please remember to call in your reservation to the office. Thanks!

Lee Dieter, *President*



June Meeting . . .

Greenhill and Bald Eagles

If you're a wildlife lover, strap your binoculars onto your golf bag when setting out for the June 9th meeting. Jim Kelley, our host for the June meeting at Greenhill Yacht & Country Club advises that the course is abundant with wildlife and it's not uncommon to catch a glimpse of a Bald Eagle or Osprey along the river and marsh areas.

Located on the scenic Wicomico River seven miles west of Salisbury, Maryland, Greenhill is a par 72 course measuring 6511 yards from the white tees and 6798 from the blues. Although predominantly flat, the course does offer some rolling terrain interspersed with eight ponds and a series of ditches and waterways that lead down to the Wicomico River.

Arriving at Greenhill in 1982 after graduating from the University of Maryland Institute of Applied Agriculture, Jim assumed the superintendency in 1985. Originally from northern California and the state of Washington, Jim settled in Maryland in the early 70's and he and his wife have a 20 month old son. Prior

experience includes Columbia Country Club and Maryland Golf and Country Club. Living on the Wicomico River, bird-watching, needless to say, is a favorite diversion along with canoeing, fishing and hiking.

The greens at Greenhill Yacht & Country Club are primarily bentgrass and are small in size. They are cut at 3/16" four to five times a week and receive 5 lbs/n per year. The Bluegrass/Bermuda teens are cut at 3/4" three times a week and fed 3.5 lbs/n annually. The fairways, comprised of Bermuda/Poa receive 4 lbs/n each year and are cut at 5/8" three times each week. As mentioned above, the area is abundant with wildlife. Coupled with its peaceful serenity, we should enjoy a relaxing but interesting day of golf.

Greenhill was originally a 9 hole course built in the 1920's by Lou White's father. Lou followed in his Dad's footsteps. Lou retired in 1985 after 20 years service. It is interesting to note that some old time records from Greenhill show that the going rate for a superintendent in the early 30's was 12½ cents an hour. That's right — \$.12½/hour! An additional 9 holes were added in 1956 by then superintendent Russ Kerns.

(Continued on page 2)

'88 SCHEDULE

The following clubs and hosts deserve recognition for scheduling 1988 MAAGCS functions. If you are contemplating hosting an upcoming meeting, plan on the 1989 season. While this may seem a bit far off, the advance scheduling allows for easier access to top notch speakers and a well rounded and improved educational program. You can take pride in your continued support and participation.

Requests or suggestions for educational topics/speakers are always welcome and should be forwarded to Steve Cohoon. We will make the complete educational program available at a later date.

March 8 — Reston G.C., Lentz Wheeler, host

April 12 — Brooke Manor G.C., John Johns, host

May 10 — Green Spring Valley, Grant Pensinger, host

June 14 — Pine Ridge G.C., Kevin Pryseski, host

July 12 — Kenwood C.C., Deane Graves, host

August 9 — Hobbits Glenn G.C., Bill Neus, host

September 13 — Penderbrook G.C., Steve Cohoon, host

October 11 — River Bend C.C., Tony Goodley, host

November 8 — Bethesda C.C., Tom Regan, host

December 13 — Turf Valley C.C., Bill Blackert, host

Golf Results . . . April

Our April 14 meeting at Redgate GC in Rockville was a resounding success. 44 players — 27 superintendents and 17 guests — enjoyed the weather and a good game. Results were: Low gross — Nick Vance with a 77; 2nd gross — Bob Orazi, 78; 3rd gross — Tom Regan, 80. Low net — Steve Potter, 69; 2nd net — John Tutich, 74; 3rd net — Grant Pensinger, 74.

Guest Categories: Low gross — Jack Montcalvo, 77; 2nd gross — Herb Carter, 82; Low net — Greg Baylor, 68; 2nd net — Jack Hewitt, 74.

Mid-Atlantic Association of Golf Course Superintendents NEWSLETTER

Published by this Association to aid the advancement of the Golf Course Superintendent through education and merit.

George Renault, C.G.C.S.
Editor

1987 Officers and Directors

President Lee Dieter
Vice President George Renault
Secretary Bill Neus
Treasurer Walter Montross
President Emeritus Gerald Gerard
Educational Steve Cohoon
Membership Russell Bateman
Golf Nick Vance
Social & Benevolence Steve Nash
Editorial & Publicity Lester Tanner
Finance Tom Regan

JUNE MEETING

(Continued from page 1)

The day's events begin at 11 a.m. with our meeting being held in the River Room. A buffet style lunch, \$10, follows at 12 noon. Golf is at 1 p.m. with a shotgun start. Note that carts are \$7/person. After play there will be a short reception in the River Room with drinks and snacks. Gift certificates will be available for awards. Dress for the day will be golf attire. While towels will be provided, lockers are not available. A quick introduction of Jim's colleagues are: Assistant Superintendent, Lee Harcum and Golf Professional David Althaus.

For those who would like to stay in the area and enjoy dinner before heading back, Jim Kelley has taken the liberty of recommending several options: The "Red Roost" is all you can eat style and features crabs, chicken, ribs, etc. When you leave the course turn left and follow red and white signs to Red Roost. "Whiskers and Wife" is a country restaurant specializing in cajun style cooking. Turn right on Rt. 352 when leaving the course. Take a left onto Rt. 349. Whiskers & Wife can be found on the right seven miles down the road.

We will thank Jim and Greenhill in advance for hosting our June Meeting and remind everyone to make your reservations in advance. Call (301) 381-0030. Enjoy yourself and remember the binoculars!

DIRECTIONS: From the Chesapeake Bay Bridge: take U.S. Rt. 50 to Salisbury, Md. Upon reaching Salisbury, turn right at the first red light (Rt. 349). Drive 6.7 miles and turn left on Rt. 352. Golf course is 1 mile further, on the left.

DRAINS

by Lester Tanner, CGCS

I believe it is difficult for many of us to write an article for our Newsletter since we feel we have little to offer others. Our members already have much knowledge, ability and experience. But, here is an attempt.

If a drain is properly installed, it should last for years, if not indefinitely. I have been installing drains since becoming a superintendent and all those installed correctly, still work.

The installation of drains is common sense and should only be done in a correct manner. Do not cut corners. While you have the hole open, do it properly, no matter the time and cost involved.

The first step is to determine where to run it. Obviously, look for a downhill slope where it can exit from the ground. This is the ideal situation. Dig the bottom trench starting at where the problem is deep enough to put in 2" of gravel in the bottom, the 4" perforated tile, and gravel all around it with at least 2" on top. The trench should always have a downhill slope. Use 2" wash gravel, and dig the trench with a backhoe. Ditchwitch trenchers will work, but you must be more meticulous since it is more likely the sides will cave in when working around the trench and it is more difficult to see your slope. The soil taken out of the trench should be put in a dump truck and hauled off. If good, stockpile it; if not, take it somewhere that it can be most useful as fill. It is best to get it out of the area since it can create a mess just piling up around the trench and cleaning it up later. You will always have excess dirt to take away.

After you have dug your trench, dress it up with some hand work. After making certain that you have slope all the way to the exit, back the dump truck perpendicular to the trench and tilt the bed a little at a time, putting a little gravel in certain spots, instead of 1 spot, to minimize hand work. Then make a slight trench in the gravel and place the drain pipe in it, assuring proper slope of pipe. Next, get in and fill the hole with 2" of gravel so it covers the drain. Care must be taken while covering the pipe to prevent shifting and twisting. After you have put in the gravel, put in an impermeable barrier over the ground where you don't want drainage. An example is when you exit a sand trap between the bunker and drain exit. After you put in a barrier, such as tarpaper, fill up that section of the hole with good topsoil and other sod or seed and mulch.

When running a drain from a problem area in a bunker, put a layer of Spundan over the gravel and then cover with sand. Sometimes, I've put the sand directly over the gravel and so far it continues to work. In an area other than a bunker

VANCE LEADS POINT TOURNAMENT

Ending with the final round in December, Nick Vance has 10 points to lead the annual accumulated point tournament. You will all recall that last year's weather forced an early conclusion with the November round. The awarding of points has been refined with second round being played June 9th at Greenhill Yacht & Country Club.

Steve Potter is second in points with 9 followed by Bob Orazi at 8, and Tom Regan with 7. Grant Pensinger and Wally Whetsell each have 6½; Joel Ratcliff 6; Jeff Yingling and George Renault with 5; Steve Cohoon and Howard Gaskill are at 4; Lou Rudinski and Mike Gilmore each have 3; Ken Ingram and Bert Yingling are at 2; and Tom Hurd and Bill Neus each have 1 point.



situation, put in drain tops that allow water direct access to the gravel. Every once in a while you will have to clear away debris and grown grass to keep them open.

Drains made with a backhoe are larger than a trencher and work better since they also act as one long sump to help water infiltration.

When one comes across an area where there is no fall, make a sump — a hole as deep as possible with the backhoe. Fill with gravel, insert the drain tile at proper grade to enable the drain to empty into the sump. Continue filling with gravel until full. Although not the ideal, it is an alternative. I have installed sumps in bunkers and fairways where I can't run a drain with proper slope and they have proven effective. Good draining!