



Mid-Atlantic Association of Golf Course Superintendents NEWSLETTER



VOLUME XXXVIII

DECEMBER 1985

NUMBER 10

The President's Message

This being my last President's Message, I spent a lot of time reflecting about the events of the past two years. Without a doubt, the highlight was the Mid-Atlantic being the host for our GCSAA International Conference and Show. Certainly, it took a lot of work, but our Mid-Atlantic members responded overwhelmingly. National directors, GCSAA past presidents, and members of the national staff all acknowledged the enthusiastic participation of our membership. Make no mistake about it — the willing participation of our members is the reason the Mid-Atlantic has prospered over the years and come to be recognized as one of the leading associations in America, proving once again that an organization is only as good as its members.

As president during the past two years, I have been able to meet new people, make new friends, and fully appreciate our association and its benefits. Being president has often been time-consuming but always rewarding. All good things must come to an end, but the pleasure has been all mine. Thank you for allowing me the opportunity to serve.

In my November message, I reported that George Cleaver had suffered a heart attack. Since then George has undergone triple-bypass surgery and is now recovering at home. We all join in wishing him a speedy recovery.

December marks our annual election meeting, which will be held at the U.S. Naval Academy in Annapolis with Michael McKenzie as our host. This is a most important meeting for all Mid-Atlantic members, and I urge everyone to attend. Remember to register by calling 964-0070.

Michael J. Larsen, *President*



Explaining "Wear Factor" To Green Committeemen

The October issue of *Northern Ohio Turf* contains an interesting view of the problem of replacement of golf course equipment, which it calls one of the most difficult expenditures to be understood by board and committee members. It can be most effectively explained by the "wear factor," in terms of the miles put on mowers, tractors, etc.

Most auto enthusiasts understand, says *Turf*, that when your car reaches 100,000 miles, it is about worn out. Most American cars are driven on the highway at speeds approaching 60 mph, using high gear with engine rpm of about 2,100, so that by driving three hours you would cover 180 miles or so.

Using this wear factor, hours of use on a mower or other equipment can be converted to miles. Although such equipment usually operates at only 5 or 6 mph or less, engine rpm is still 2,100 and higher on one- and two-cylinder

Continued on page 2

1985's FINAL MEETING DECEMBER 10 AT ANNAPOLIS

The year's final opportunity to play golf with fellow superintendents will be December 10 at the Naval Academy Golf Course in Annapolis, if the weather continues to be kind to us. Following golf, the dinner and meeting will be held at Hubbard Hall in the second-deck "N" Room.

The challenging Naval Academy Golf Course dates back to pre-World War II days, when the original layout was remodeled by a well-known golf course architect, William S. Flynn. Flynn, who had been a golf course superintendent in Pennsylvania, first entered the architect field when he assisted in designing and building the East Course at Merion Golf Club. He also remodeled several other golf courses in this area, including Woodmont, and he designed such famous courses as Cherry Hills in Denver and Atlantic City Country Club. During his career, he continued to be interested in the superintendent's art, writing a number of articles and pamphlets on greenkeeping and starting a number of young men in the profession. Additional redesign work at the Academy course is being done by Lindsey Ervin.

Michael S. McKenzie, golf course superintendent at Annapolis, describes his course as rolling and open on the front

nine, rolling and wooded on the back. Mike mows his bentgrass and *poa annua* greens four times a week to 3/16" and his bluegrass, bermuda, and rye mixture fairways three times weekly to 3/4". Rough is cut once a week to 2". Fertilizing schedule is 4# of N annually on greens, 2½# on fairways.

This will be the MAAGCS' sixth meeting at the Naval Academy, with earlier sessions being held there in 1973, 1977, 1978, 1980, and 1981.

Directions to the golf course are: From Baltimore, take Rte. 2 toward Annapolis, follow signs to Naval Academy. Turn left before crossing Severn River Bridge, go through the traffic light to the course and pro shop (on the left). From Washington, go east on Rte. 50, cross Severn River Bridge and take exit for Baltimore-Naval Academy; keep right (Rte. 450) and turn left before crossing Old Severn River Bridge. Follow along to the light and go straight through to the course.

If going directly to the dinner and meeting, from Rte. 450 cross Old Severn River Bridge and turn left at first stop light (Gate 8). Go to the bottom of the hill, and first building on the right is Hubbard Hall; meeting will be upstairs in the "N" Room.

Continued on page 3

Mid-Atlantic Association of Golf Course Superintendents NEWSLETTER

Published by this Association to aid the advancement of the Golf Course Superintendent through education and merit.

Claud Corrigan, *Editor*
Joe Gambatese, *Photographer*

1985 Officers and Directors

President Mike Larsen
Vice President Gerald Gerard
Secretary George Renault
Treasurer Lee Dieter
President-Emeritus Ken Braun
Educational Chairman . . . Ken Ingram
Membership Chairman . . . Virgil Robinson
Social & Benevolence Bill Neus
Editorial & Publicity Walter Montross
Finance, Golf Chairman . . . Nick Vance

From the Golf World

One of the prime events of the upcoming GCSAA annual International Golf Course Conference and Show will be the presentation of the Old Tom Morris Award during the banquet on February 3 at the San Francisco Hilton. Receiving the award will be one of the pioneering women's tour players and an LPGA Hall of Famer, Patty Berg, who won 29 championships as an amateur and 55 as a professional. The Old Tom Morris Award will be the latest in a long line of special recognition awards given to Patty, who has also won the USGA's Bob Jones Award, the Golf Writers' Charlie Bartlett Award, the William Richardson, Ben Hogan, and Herb Graffis Awards; in 1979, the LPGA established the Patty Berg Award to honor her sportsmanship, goodwill, and contributions to the game.

Word comes from Pat Lucas, editor of Tee to Green, that Norman Williams, who survived the fiery crash of two jumbo jets in the Canary Islands in 1979, will be the speaker at the annual Christian Prayer Breakfast at the San Francisco Hilton on January 31 at 7 a.m.

On Nov. 14, Lanny Wadkins received the PGA Player of the Year Award during the PGA's annual meeting in Palm Beach Gardens. Also honored were Don Pooley, a Tour pro who took the Vardon Trophy with a 70.36 average for 97



WATCH OUT FOR MULCH POISONING

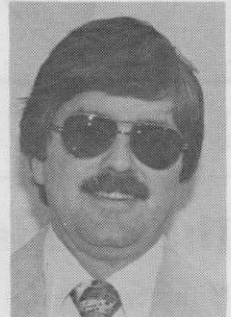
by Gerry Gerard

Hardwood or bark mulch which in storage has been piled high and deep can cause unexpected problems. Alcohol may form at the bottom of the pile; under anaerobic conditions, alcohol may form in any decomposing material, and in rainy periods, wood alcohol forms at the bottom and in the middle of the pile.

The Ph of the hardwood mulch will drop into the 3.0 to 3.5 range, which prevents the bacteria that break down the mulch from getting necessary oxygen. Growth is limited to anaerobic bacteria which produce alcohol (methane).

As I unfortunately observed this spring, alcohol injury to actively growing plants is almost instantaneous. The alcohol draws water from the plant tissues and from the ground. This, within a matter of hours, turns the grass that borders mulched shrubs and flower beds white. Many plants, especially annuals, will not survive once the symptoms appear.

To avoid this situation, hardwood mulch piles should not be higher than eight feet or wider than twelve feet at the base. In addition, during long storage, occasional turning of the mulch pile is helpful.



rounds, despite not winning a tournament; he did hit his career high in earnings with \$159,594. Jerry Cozby of Bartlesville, Oklahoma, and the Hillcrest C.C. was named PGA Professional of the Year, Larry Startzel received the Horton Smith Award for contribution to education, Roger Van Dyke of the Flint Golf Club in Michigan won the Bill Stausbaugh Award for achievements in PGA-club relations, and Ed Dougherty of Linwood, Pa., was named PGA Club Professional Player of the Year.

A final word on awards: Bill Bengyfield of the USGA Green Section, was picked as a winner of the National Golf Foundation's Outstanding Service Award.

1986 Slate Chosen by Nomination Committee

Gerry Gerard as the nominee for president heads the slate picked by the Nominating Committee chaired by past president Ken Braun and to be voted on during the December 10 meeting at Annapolis. Other nominees include Lee Dieter for vice president, George Renault for secretary, Walter Montross for treasurer, and for the two three-year openings on the Board of Directors, Steve Nash, Les Tanner, and Howard Gaskill. In addition, nominations can be made from the floor.

In addition, one minor by-laws change will be voted on at the meeting. Under Class G, Non-Resident Associate Member, the phrase "and receive death benefits" should be deleted and that sentence conclude with the words "right to vote and hold office."

WEAR FACTOR (Continued from page 1)

engines, slow forward speeds coming from a lower gear ratio.

Using triplex mowers as an example, to mow greens every day takes an average of three hours per day, which comes out to 65,520 miles per year, or, for five years, 327,600 miles. Since engineers are aware that stop-and-go driving and turning increases the wear factor, consider the effect of the back-and-forth operation of most golf course equipment. Further, such equipment doesn't attain the velocity to benefit from a cooling wind as cars do, and radiators often get clogged with grass clippings and other debris, resulting in higher temperatures and greater wear. Other contributing factors are early morning activity in the dew plus frequent running through and over chemical and fertilizer applications which contain corrosive elements.

Match Play Title Won by Ben Stagg

In a round played on misty November 12 over rain-softened Hunt Valley Golf Club, Ben Stagg of Hog Neck Golf Course won the annual MAAGCS match play championship, edging Jeff Miskin of Montgomery Country Club. With the new point system put into effect this year, six men had a chance to win on the final day, but Ben was the high point man.

In open play, low net honors went to Ken Keller with a 67, host Bob Orazi coming in second with 70. Ed Porterfield won low gross with 78 over John Hoover's 82.

Maryland Turfgrass '86 Set for January 6-8

Maryland Turfgrass '86, the annual educational conference and tradeshow cosponsored by the MAAGCS with the Maryland Turfgrass Council, Maryland Cooperative Extension Service, and other professional turfgrass organizations, will be held January 6-8, 1986, at the Baltimore Convention Center. The headquarters hotel will be the Baltimore Hyatt Regency on the Inner Harbor, at which the MAAGCS will have a suite for meeting and socializing.

The educational sessions and tradeshow promise to be an excellent opportunity for all those involved in golf course management and those that serve this profession. Some of the featured speakers from other states include Bill Emerson, Paradise Valley C.C., Arizona; Dr. Bob Shearman, University of Nebraska; Dr. William Torello, University of Massachusetts; Dr. Tim Bowyer, Southern Turf Nurseries; Dr. James Fickle, Mallinckrodt, Inc.; Dr. Norman Hummel, Cornell University; Dr. Paul Heller, Penn State University; Dr. David Chalmers, V.P.I.; Stanley Zontek, USGA; Dr. Richard Hurley, Lofts Seed; and Dr. Doyi Yeam, South Korea. Following are a sampling of the 50 or more topics to be addressed at the conference:

1. Research on Moss & Algae Problems in Putting greens.
2. Unusual problems in Mid-Atlantic Golf Courses in 1985.
3. Hazardous Substances Insurance Coverage.
4. Comparing and Using Turfcal versus Chipcal For Annual Bluegrass Control.
5. Turfcal Use For Annual Bluegrass Control in Woodmont C.C. Greens.
6. New Developments in Potassium Nutrition to Improve Golf Course Turf Performance.
7. Spread and Control of the Southern June Beetle on Mid-Atlantic Golf Courses.
8. Take-All Patch Disease and Its Control.
9. Fairway Establishment with Warm Season Grasses.
10. Aquatic Vegetation Control Methods.
11. Plant Material Suggestions for Golf Courses.
12. Managing Golf Course Turf in the Far West Versus the Mid-Atlantic Area.
13. Advances in Annual Grass Control Methods.
14. New Research on the Timing and Use of PGR's on Bentgrass and Tall Fescue.
15. Zoysia and Cool Season Grass Mixtures.
16. Understanding and Interpreting the National Turfgrass Evaluation Program.
17. The Pollution of the Chesapeake Bay: Who's At Fault - Who Isn't.

Registration mailings for the conference will be made soon. For further information, contact either Dr. Tom Turner at 301-454-3716 or Ms. Cheryl Gaultney at 301-335-3700.

CONGRATULATIONS TO THIS YEAR'S MUSSER WINNERS



Winners in the 7th Annual Musser Tournament played October 15 at the Country Club of Maryland were, top, low net two best-balls of 123, Jeff Yingling, Bert Yingling, Chris Leatherman, and Dirk Schultz of the Yingling Golf Center, with (front) Dr. Fred V. Grau, and bottom, the low gross team with a two-under-par 138 of Mark Bertoldi of Chestnut Ridge and Bob Miller of Suburban flank President Mike Larsen (the other two winners, Ken Braun of Bonnie View and Paul O'Leary of Eagles Nest, left before the pictures were taken). The tournament, which benefits the Musser International Turfgrass Foundation is sponsored by the MAAGCS and the Maryland Turfgrass Council.

ANNAPOLIS (Continued from page 1)

The program for Tuesday, Dec. 10 is:
Lunch: 11 a.m. - 1 p.m. at EM Club
next to No. 3 fairway
Golf: 11 a.m. on
Cocktails: 5:30 p.m.
Dinner: 6:30 p.m. (cost \$16)
Meeting: 7:30 p.m.
For reservations, call 964-0070

NEW MEMBERS

Kenneth M. Cominsky, Class F
Technical Representative
O.M. Scotts
John V. Kain, Class C (Student)
Assistant Golf Course Superintendent
Eisenhower Golf Course
Crownsville, Maryland

Mid-Atlantic Newsletter Supporters

Adams Equipment, Inc.
Distributor of Bunton Commercial Mowers, Yard Man Riders and Tractors, Ryan Turf Care, Milorganite, Broyhill Sprayers, Standard Pro-Line, Par Aide and Lewis Line Golf Course Accessories.
Silver Spring: 301-589-2300
Baltimore: 301-589-0500

Centreville Sod Growers
Bluegrass, Fescue, and Falcon Tall Fescue Sod
Sheldon & Craig Betterly 703-361-8338

Chesapeake Industrial Supply, Inc.
General mill-industrial products
930 E. 22nd St., Baltimore, Md. 21218
John Keller, Pres. 301-366-2224

Conaway, Inc.
Ransome, Bobcat, SDI Sprayers, Terra Aerator, Poulan Chain Saws, Jacobsen Trucks, Weed Eater Trimmers
Dick Jones Wash: 301-953-9220
Jim Duvall Balt: 301-792-7383

Cornell Chemical & Equipment Co., Inc.
Pesticides: (Fungicides, Herbicides, Insecticides, etc.) Chemicals: (Dyes, Paints, Plastics, etc.) Application Equipment: Sprayers, Spreaders, Parts, etc.)
Cliff Case, Don Klein 301-636-2400

Egypt Farms, Inc.
Golf Green Topdressing, Trap Sand, IBDU & Par-Ex Fertilizers, R&R Parts, Warren's Spunbond, Gypsum & Mulch
John Strickland, Carroll Davis Rich Piatnek 301-335-3700

E-Z-Go Division of Textron
GX-800 Light Turf Vehicle, X-500 Light Turf Vehicle, GT-7 Turf Truckster and E-Z-Go Golf Cars
Rick Arnold, Bob Post, Roscoe Shupe
301-948-2920 (Baltimore) 301-792-4699
(Richmond) 804-262-3275

Jonathan Green & Sons, Inc.
Grass seed mixtures, chemicals, fertilizers, 150-yard markers.
David Young 301-428-1421
1-800-526-2303

G.L. Cornell Company
Jacobsen Turf Equipment Tom Harris
Cushman Turf Trucksters Russ Bull
Ryan Turf Equipment Terry Hill
Bean Sprayers, National Mowers Bob Lynch
Standard, Par Aide Golf Supplies Bill Brown
Club Car, Columbia Par Car Randy Reed
301-948-2000 800-492-1373

Harford Industrial Minerals, Inc.
Precision Topdressing and Bunker Sand
Jack Montecalvo Balt: 301-679-9191
Dottie Stancill N.J.: 609-965-3414

Lea's Green Meadows, Inc.
Fertilizers (W.I.N. and S.C.U.), Chemicals, Grass Seed, Bulk Soil Mixes, Spreaders, Sprayers (1 gal. - 300 gal. size), Tools and Supplies
Herb Lea, Harry Fridley 202-488-1818

Lebanon Chemical Corporation
Manufacturers and Formulators of Country Club and Greenskeeper Professional Turf Fertilizers.
Junior Ruckman 703-869-2628
Ed Price 800-233-0628

LESCO, Inc.
LESCO Sulfur-Coated Fertilizers, Chemicals, Grass Seed, Supplies and Equipment
Lynnie Cook 301-386-2322
Vanessa Johnson 301-855-1271
Toll Free: 800-321-5325

Lofts/Maryland
Grass Seed and Fertilizer
Joe Yudin, Riley Barber Wash: 301-937-9292
Ed Pacilio, Kevin Driscoll Balt: 301-323-4444

Moore Golf, Inc.
Golf Course Construction, Remodeling, Irrigation Installation
David Canavan, Bob Ryan, Lyle Thompson
703-825-9211

Newsom Seed Co.
Rockville, Md.
Grass seed, new varieties, custom mixes
Strick Newsom 301-762-2096

Par-Ex Professional Products
Slow Release Fertilizer with IBDU, IBDU/SCU
R.A. "Dick" Doyle 301-357-8056
Estech, Inc., P.O. Box 512, Winter Haven, Florida 33882-0512 813-294-2567

Pro-Lawn Products, Inc.
Technical and Planning Services, Professional UF & SCU Fertilizers, Pesticides (Fungicides, Herbicides, Insecticides, etc.), Turf Seeds (Bents, Ryegrasses, Blues, Fescues, etc.), Soil Amendments
Tom Malehohn 301-876-7474

Russell Roberts Co., Inc.
Golf Course Design, Construction, Irrigation and Tree Moving
Jack Roberts 301-253-4066
Jimmy Roberts 301-977-7961

Scott's Proturf Division
Slow Release Fertilizers, Controls, Seed & Spreaders
Mike Layle 804-565-2763
Bill Morton 301-725-6422

Seed Corporation of America
New Varieties Turf Seed, Special Blends, Ryegrasses, Bluegrasses, Tall Fescues, Hard Fescues and Red Fescues
Nancy Gross, Joe Getzendanner, Jesse Yopp, Bill Daniels 301-685-6900

Share Corporation
Liquid Turf Maintenance Products, Vehicle Maintenance Products
Ed Hower 301-465-8154
Milwaukee, WI 414-355-4000

Summit Hall Turf Farm, Inc.
Meyer Z-52 Zoysia (sod or plugs), Premium Bluegrass Blend (sod), Improved Tall Fescue Blend (sod)
Brian K. Finger 301-948-2900
Frank H. Wilmot

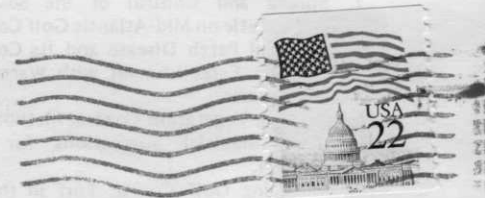
Turf Center, Inc.
Premium Turf (Bluegrass, Tall Fescue, Bermudagrass, Zoysia), Vaughan's Grass Seed
Diana Patton, Emory Patton 301-384-6300

Turf Equipment and Supply Company, Inc.
Toro Turf Equipment and Irrigation Products, Olathe Turf Equipment, Giant Vac Blowers, Vacs, Truck Loaders, Daihatsu Utility Vehicles, Snowco Trailers
Don Turner, Lynn Matson, Bill Hughes, Gary Phillips, Lance Ernst, Paul Standerfer
Wash: 301-621-2975 Balt: 301-796-5576

Mid-Atlantic Association of Golf Course Superintendents NEWSLETTER

Claud Corrigan, Editor
2236 Malraux Drive
Vienna, VA 22180
(703) 573-4931

First Class Mail



NEW MEMBERS

Kenner M. Conroy, Class I
Technical Representative
O.M. Steeg
John V. Klein, Class C (Student)
Assistant Golf Course Superintendent
Eliensky, Golf Course
Crownsville, Maryland