



# Mid-Atlantic Association of Golf Course Superintendents NEWSLETTER

VOLUME XXXVI

NOVEMBER 1983

NO. 9

## Nov. 1 Meet Is At Leisure World

by Ken Combs  
Superintendent, Leisure World

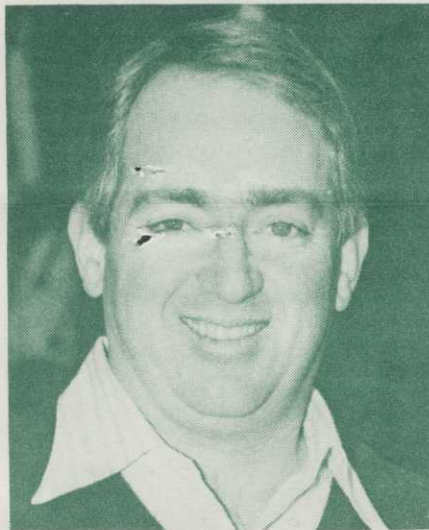
Scene of our November 1 meeting, Leisure World Golf Course was designed by Desmond Muirhead and Associates of California in 1965 for a senior membership. In anticipation of an expanding community, three new holes were constructed in 1975 by Russell Roberts. The 5,504-yard course once characterized by narrow fairways bordered by woods is presently undergoing a change from woods to high rises. Construction the first of four 250-unit high rise condominiums inside of the golf course began in March of 1983 with completion anticipated in 1987.

Infringement onto the golf course from new development has necessitated changing from a maintenance mode to a redesign and construction mode. Presently, five holes have been affected and three more are planned to have utilities, access roads, etc., running through them in the near future.

The elevated, rolling greens are Penn-cross bentgrass and average 7,500 square feet in size. They receive 5½ lbs. of nitrogen per 1,000 square feet per year. Mowing height is 3/16th of an inch, five times a week depending on tournament play and cups are changed on a daily basis, to counter the problem of spike marks from golfer's shoes.

Tees are Penn-cross bentgrass with average size of 4,000 square feet. They receive 4½ to 5 lbs. of nitrogen per 1,000 square feet per year, are mowed to a height of 7/16th of an inch twice a week, and have tee markers moved on a daily basis.

The original 18 fairways were sodded to bluegrass. In 1977, poa annua invasion of fairways dictated we start a perennial ryegrass program. Fairways cover 25 acres and are mowed three times a week, during the spring at ¾", during the summer at 11/8", and during the fall at ¾".



Glover Trophy winner Paul O'Leary

### NEED A MASTER PLAN?

A brochure on doing a golf course master plan that is valuable for those planning a new course or remodeling an old one can be obtained from the American Society of Golf Course Architects at 221 N. LaSalle St., Chicago, IL 60601.

In 1982 we completed conversion of a Toro hydraulic irrigation system to a Toro electric system on greens, tees, and fairways. Due to the contours of our putting greens, we spend approximately 1,100 manhours a year in hand watering isolated dry spots.

Over the next 5 years we anticipate the number of rounds doubling. A 5-year program has been developed that will handle the increased amount of play in the future.

Directions to Leisure World are as follows: Washington Beltway (495) to Georgia Avenue North. Go approximately 9 miles on Georgia Avenue. Turn right into Leisure World at first traffic light past Bel Pre Road.

Program for the November 1 meeting is: Golf — anytime after 12:00 p.m. (carts are \$20 for two); Dinner/Bufferet— 6:30 p.m. (\$11). For reservations call

## Paul O'Leary Wins 1983 MAAGCS Championship

The Bill Glover trophy belongs to Paul O'Leary as a result of the Eagle-nest superintendent's 78 at Ocean City Golf and Yacht Club on October 11 in the Mid-Atlantic's annual championship tournament; he matched out Bill Shirk, who also had a 78, and had a 2-stroke margin over Joel Ratliff, who took third gross. The low gross merchandise prize went to Scott Wagner with a fine 75, since as neither a Class A or B member he could not qualify for the trophy competition.

Low net winner and holder of the Reuben Hines trophy was Bill Neus with 86-27 for a 59. Mike McKenzie was second with 96-33-63, Grant Pensinger with 84-17-67 matched out Stanley Lawson (83-16-67) for third. Tom List took fifth with an 85-16-69 that matched out Ron Hall's 80-11-69, and Dave Fairbanks was seventh with 99-29-70.

In the commercial and guest division, Bill Morton's 88 took low gross, with Mike Nalls the runner-up, and Brian Finger with a net 59 led Doug Reynolds by a large margin. Four closest to the pin prizes were given; Stan Lawson was 17' at No. 2 on the white course and Dave Fairbank was 9' at No. 8; Mike Nalls was 45" at No. 2 on the blue course and Doug Renolds was 16'8" on No. 8, blue course. Ken Braun hit the long drive of the day.

598-5900 (Mrs. Howard) or 598-4278 (Maintenance Shop).

Because of the change of date from Nov. 8 to Nov. 1 and the resulting need for expedited mailing of this newsletter, postcards are not included. Please make reservations by phone as soon as possible.

Program for the meeting is a panel discussion of summer stress, 1983.