



Mid-Atlantic Association of Golf Course Superintendents NEWSLETTER

VOLUME XXXVI

DECEMBER 1983

NO. 10

Final '83 Meeting Is Dec. 13, BHCC

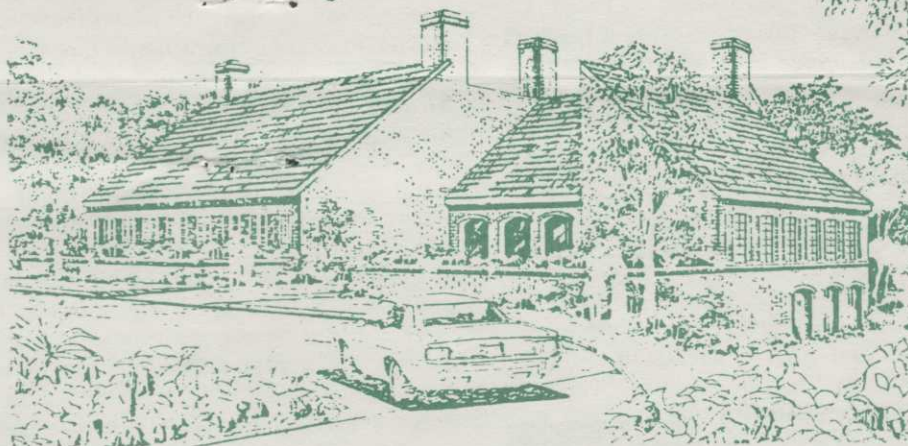
Belle Haven Country Club in Alexandria, Virginia, will play host to the Mid-Atlantic Association's final meeting of the year on Tuesday, December 13, with Superintendent Jim Meier doing the honors. Weather permitting, golf will be available, and reservations for dinner should be made by either phoning 765-5448 or returning the enclosed card.

Built along Hunting Creek and separated from the Potomac River by the Mount Vernon Parkway, Belle Haven was designed by Leonard Macomber, the last course done by this Massachusetts architect before his death in 1954. Homes have been built on 141 of the original 300 acres, leaving 159 acres for the course. In 1969, four new holes designed by Eddie Ault were built on filled land along Hunting Creek, the old 10th and 13th holes became the practice driving range, and old Nos. 11 and 12, across Ft. Hunt Road, were allowed to go to seed. Five of the original greens are still in use today. The course has a par of 72 and plays 6,625 yards from the blue tees, 6,344 yards from the white.

Of the fairways, 13 are mid-iron Bermuda, while the rest are a mixture of grasses. Superintendent Meier, who has been at Belle Haven since 1979, cuts fairways, tees, and collars three times a week to 1/2" and greens six days a week at 3/16". Fairways get about 3 pounds of N a year, tees 2 pounds, and greens 4-6 pounds. The fairways are being overseeded annually with perennial rye. Green sizes vary from 2,600 to 8,000 square feet.

Mrs. Bob Shields, assisted by Chips Cantor, unveils a plaque behind Woodmont Country Club's first tee honoring her late husband, who was Woodmont's superintendent for 30 years before his death in 1982. Looking on are Mike Larsen, currently the superintendent at the Rockville course, and Dr. Fred Grau, president of the Musser international Turf-grass Foundation.

Belle Haven Country Club Alexandria, Virginia



A busy course which annually stages the well-known Belle Haven Four-Ball Championship each Spring, the layout recorded nearly 50,000 rounds in 1982.

Directions to Belle Haven are as follows: From the north, take the Capital Beltway (Route I-495) across Woodrow Wilson Bridge, then Rte. 1 south toward Ft. Belvoir; stay in the right-hand lane because you will bear off to the right at the first traffic light you come to in order to make the left turn at Ft. Hunt Road. Follow Ft. Hunt Road a few

blocks to the club on your left. From the south, follow 495 to Alexandria, take Route 1 south toward Ft. Belvoir, then proceed as above.

Program

- Golf — Anytime
- Lunch — Available by club number or cash
- Directors meeting — 3 p.m.
- Cocktails — Cash bar at 6 p.m.
- Dinner — 7 p.m. (cost: \$15; coat and tie required)
- Meeting — 8 p.m.

