



CHARTER

Mid-Atlantic Newsletter



PUBLISHED BY:

Mid-Atlantic Association of Golf Course Superintendents to aid in the Advancement of the
Golf Course Superintendent through Education and Merit

Volume XXXI

April 1978

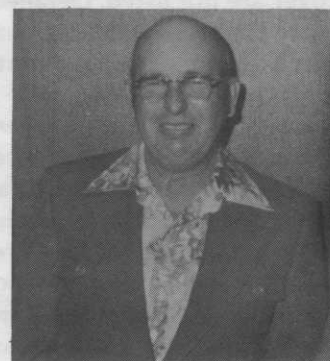
Number 4

April Meeting

The April 11 meeting will be held at the Talbot Country Club, Easton, Maryland. Your host Ralph MacNeal, was born and raised in Talbot County and was a dairy farmer before going to work at the Country Club

in June 1963. Ralph being a farmer and a hard worker, knew how to make things grow. Through self education in the turf field, and the services USGA, he has done an outstanding job.

The golf course was originally a nine-hole course and was opened in 1910. In 1962 the services of Ed Ault were acquired



RALPH MacNEAL

to rearrange the old nine holes and add nine more to complete the layout as it is now. The work began in 1963 and the course was open for play in Spring 1964. All work was done through a local contractor by Ralph MacNeal. The greens run from 9,000 to 10,000 sq. ft. of Pencross and are cut at 3/16 of an inch. The fairways and fees are a mixture of bluegrass and fescue and a little bit of bermuda. The entire golf course has a manual irrigation system.

(continued on page 8)

PRESIDENT'S MESSAGE



Fellow Members:

I'm sure all of you are aware that 1978 marks the 50th year of the Mid-Atlantic Association of Golf Course Superintendents. Golden anniversaries are generally celebrated with "Gusto" and it is the feeling of your Board of Directors that

the Mid-Atlantic's be no exception.

Wayne Evans, our illustrious newsletter editor, has been appointed chairman of the 50th Anniversary "Gusto" Committee. I'm sure you have good ideas on how we can best celebrate our anniversary, so let Wayne hear from you. Let's have a celebration we'll long remember, one that our younger members will be able to tell our replacements about when they make plans to celebrate the 100th anniversary of Mid-Atlantic in 2028.

Ralph MacNeal, Superintendent of Talbot Country Club in Easton, Maryland, is hosting our April 11th meeting. Ralph and Talbot Country Club always roll out the green carpet for the Mid-Atlantic. Make plans now for a day of good golf, good fun, good food and a great meeting. See you there.

Yours for finer turf for better golf.

Bill Emerson

Ten Years of Research on Winter Injury on Golf Courses; Causes and Prevention

by Dr. James B. Beard,
Michigan State University

Winter injury of turf is difficult to understand because it results from the interaction of a number of environmental, soil, and cultural factors. Before a golf course superintendent can initiate the appropriate cultural program to prevent winter injury, he must determine the particular type or types of winter injury that occur most frequently at various locations on the golf course. This involves a study of the particular symptoms, including time of occurrence, soil type, topography, drainage characteristics, traffic patterns, and the probability of environmental stress. Such information is assembled over a period of years, and a

(continued on page 2)

April Meeting

(continued from page 1)

The club prefers that you pay as you go so come prepared.

Golf after 11:00

Lunch at the grill - Cash!

Cocktails - 6:00-7:00

Dinner - 7:00

Directions: From the Bay Bridge go south on Rt. 50 to the Easton Airport on your right. One mile further down the road is a by-pass (Rt. 333) to your right. Follow this across the Peach Blossom Bridge, and the third road to your right will be Country Club Drive.

Dates to Remember

MAY 9

Superintendent Pro Tournament

JUNE 13

Indian Springs Country Club

JULY 11

Loudon Golf and Country Club

AUGUST

Family Picnic

SEPTEMBER

Philadelphia Tournament

Wilmington Country Club, Wilmington, Del.

OCTOBER

Superintendent's Tournament

Hunt Valley Golf Course

The Maze Theory

A noted psychologist interviewed and measured 100 successful businessmen and how they "moved up the ladder" to success. Dr. Jennings found seven reasons these people "made it" through the Maze.

1. **TRUST SENSE.** This is the first and most important. This means that the MAZE BRIGHT man takes the trouble to make himself available to his organizational superiors. His boss trusts him, knows that he is working and most important, that the boss can find him if he needs him. The boss feels sure that he can

(continued on page 10)



WHITE MARSH, MD.
(301) 335-3700

- Sterilized Top Dressing
- Shredded Tan Bark Mix
- Peat Humus
- Top Soil

IBDU

BAKER'S
AG DOLOMITE

par ex
PROFESSIONAL PRODUCTS



Uss Vertagreen
Turf Products

sof'n:soil
LAWN & GARDEN GYPSUM

EGYPT FARMS EXCLUSIVE! All top dressing ingredients are thoroughly mixed and sterilized by indirect heat in our special process. The sand particles are actually coated with a mixture of top soil & peat humus for a completely homogenous mixture that will not separate during handling and spreading.

Egypt Farms top dressing is formulated especially for the transition zone to specifications recommended by the United States Golf Association, Texas A&M, Penn State, North Carolina, and the University of Maryland.

Many years of research and testing by these leading universities have produced a soil mixture for superior growth; to maintain the best balance of percolation; to resist compaction; for good aeration; and for the retention of usable water & nutrients in the growing medium.

*Green and tee construction materials and mixes conforming to U.S.G.A. specs are also available.

Vaughan's

SEED CO

DIVISION OF THE VAUGHAN-JACKLIN CORP.

**GRASS SEED • FERTILIZERS
INSECTICIDES • WEED KILLERS
TURF FUNGICIDES**

NEW VARIETIES

**Adelphi • Glade • Citation
Certified Mixtures • Milorganite • IBDU**

Strick Newsom
1701 Cabin Branch Road, Landover, Md. 20785
(301) 322-8800



Cornell Chemical & Equipment Co., Inc.
3500 Washington Blvd.
Baltimore, Md. 21227
DISTRIBUTOR FOR LOFTS SEED
PHONE: (301) 247-1525
Clifford S. Case
Don Klein



G.L. CORNELL COMPANY
TURF EQUIPMENT



16031 INDUSTRIAL DRIVE • GAITHERSBURG, MARYLAND
(301) 948-2000

Turf Equipment

JACOBSEN TRACTORS & GANG MOWERS
CUSHMAN TURF TRUCKSTERS • BEAN SPRAYERS
HEAVY DUTY ROTARY MOWERS • SEEDERS
SWEEPERS • SOD CUTTERS • TRAILERS • WOOD
CHIPPERS • TURF FUNGICIDES • SPRINKLERS
GOLF SUPPLIES

16031 Industrial Drive
Gaithersburg, Maryland
(301) 948-2000