

testing nearly every type of golf shot we concluded that the best turf from which to hit a controlled golf shot was close-cut, inwatered fescue turf. Irrigated bent-forget it!

I believe that, practically, we must work toward developing more drought-tolerant grasses and learn to manage them with minium water. Dry grass is healthy grass. We must learn how to maintain healthy grass without the need for massive doses of lethal chemicals. Do we need to kill all the weeds? Let's let some wildflowers survive! Let's not spray pesticides fence to fence.

---

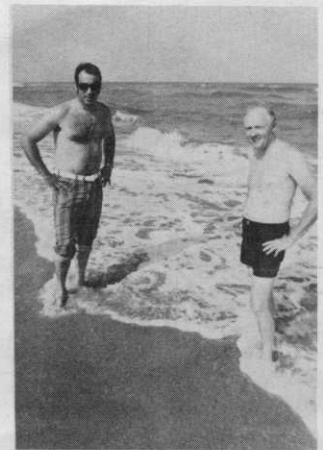
#### PICNIC PICTURES



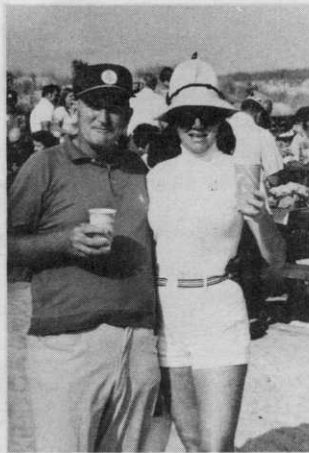
Lee Dieter



Sam Kessel - standing  
Jack McClenahan - sitting



Right - Carl Schoening  
Left - George Thompson



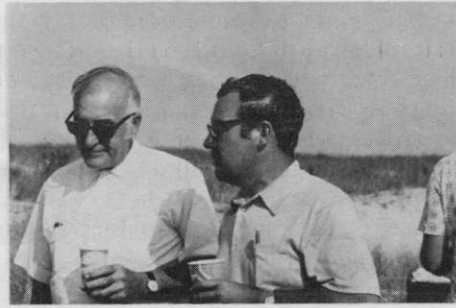
Bill Livingston and Kit



Russell Kerns



David Cammarota  
Wife - Cheryl Anne



Left - Carroll Davis  
Right - Buck Whetsell



Left to right - Lou White, Angie Cammarota, John McDonald & son.

## CHIP-CAL<sup>®</sup>

TRI - CALCIUM ARSENATE

AND A FULL LINE OF TURF IMPROVEMENT PRODUCTS FOR USE BY THE GOLF COURSE SUPERINTENDENT, Including:

- Buctril<sup>®</sup> Bromoxynil
- Turf Kleen
- MCPP



CHIPCO<sup>®</sup> Turf Products  
New Brunswick, New Jersey 08903

HEAVY RAIN – NO DRAIN  
PYTHIUM COMES – TURF SUCCUMBS

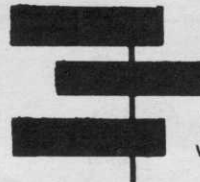
HENRY J. CARROLL  
235-4189

H. R. HERNDON, JR.  
338-0483

### HENRY J. CARROLL TREE SERVICE

Member of the Maryland Arborist Assn.,  
American Society of Consulting Arborists  
and the International Shade Tree Conference

3911 YOLANDO ROAD BALTIMORE, MD. 2128



### PRINCETON TURF FARMS, INC.

Growers of Highest Quality Sod for  
Lawns, Parks and  
GOLF COURSES

We are the ONLY Local Grower of Turf  
With a COMPLETE Inventory for all Uses

- Merion Kentucky Blue
  - Fylking Kentucky Blue
  - Pennstar Kentucky Blue
  - Certified Mixtures
  - K-31 Tall Fescue w/Ky. Blue
  - Penncross Bent
  - 328-419 Tafrote Bermudas
  - NEW VARIETIES - Kinds
- NEW – EXCLUSIVE – WARRENS A 20 & A 34

Md State Inspected and Certified

PARKER SHIRLING  
Member GCSAA  
& Mid-Atlantic

301 • 827-8454  
BOX 105A, RR3 CENTREVILLE, MD. 21617