

Green Expo Booth Challenge Rewards Vendors and Members

The 18-hole Booth Challenge at this year's Green Expo was well-received by the 19 participating MGCSA affiliates. This event was designed to promote more traffic to trade show booths. Members picked up a scorecard at the MGCSA booth and those that made it to all participating vendors' booths would be eligible for the prize drawing.

Eric Peters, Superintendent at North Links Golf Course, was the recipient of a set of Callaway golf irons courtesy of MGCSA affiliate members who participated in the Booth Challenge at this year's Green Expo at the Minneapolis



Newly-elected Board member Eric Peters was the recipient of a set of Callaway Irons for participating in the MGCSA's affiliate booth challenge at the Minnesota Green Expo in early January.

Convention Center January 5, 6 and 7. Eric was also elected to the Board of Directors at the MGCSA Annual Business Meeting on January 6.

Also receiving prizes were Paul Eckholm, CGCS, Heritage Links Golf Course, who was awarded a \$300 gift certificate, and Javier Diaz, Indian Hills Golf Club, won a \$200 certificate.

"In all the shows we've exhibited at, we have never had so many Superintendents stop by our booth than we had this year. I'm sure it was directly attributed to the Booth Challenge," said Jay Hudson, Glenn Rehbein Companies.

"In all the shows we've exhibited at, we have never had so many Superintendents stop by our booth than we had this year. I'm sure it was directly attributed to the Booth Challenge."

*— Jay Hudson
Glenn Rehbein Companies*

Thanks to the Following Participating "Booth Challenge" Companies

BASF

Brock White Company

Dow AgroSciences

FMX Turf

Glenn Rehbein Companies

GreenImage, LLC

Hydrologic

LESCO, Inc.

Minnesota Valley Wholesale

MTI Distributing, Inc.

Plaisted Companies

ProSource One

Renaissance Fertilizers, Inc.

S & S Tree & Horticultural Specialists, Inc.

Superior Tech Products

Sustane Natural Fertilizer of America, Inc.

Tee Shot Marketing

Turf Supply Co.

Twin City Seed Co.

Oh, My Aching Back

If you have lower back pain, you are not alone. Nearly everyone at some point has back pain that interferes with work, routine daily activities or recreation. Americans spend at least \$50 billion each year on low back pain, the most common cause of job-related disability and a leading contributor to missed work. Back pain is the second most common neurological ailment in the United States - only headache is more common. Fortunately, most occurrences of low back pain go away within a few days. Others take much longer to resolve or lead to more serious conditions.

Acute or short-term low back pain generally lasts from a few days to a few weeks. Most acute back pain is mechanical in nature - the result of trauma to the lower back or a disorder such as arthritis. Pain from trauma may be caused by a sports injury, work around the house or in the garden, or a sudden jolt such as a car accident or other stress on spinal bones and tissues. Symptoms may range from muscle ache to shooting or stabbing pain, limited flexibility and/or range of motion, or an inability to stand straight. Occasionally, pain felt in one part of the body may "radiate" from a disorder or injury elsewhere in the body. Some acute pain syndromes can become more serious if left untreated.

Chronic back pain is measured by duration - pain that persists for more than three months is considered chronic. It is often progressive and the cause can be difficult to determine.

What Structures Make up the Back?

The back is an intricate structure of bones, muscles and other tissues that form the posterior part of the body's trunk, from the neck to the pelvis. The centerpiece is the spinal column, which not only supports the upper body's weight but houses and protects the spinal cord - the delicate nervous system structure that carries signals that control the body's movements and convey its sensations. Stacked on top of one another are more than 30 bones - the vertebrae - that form the spinal

column, also known as the spine. Each of these bones contains a roundish hole that, when stacked in register with all the others, creates a channel that surrounds the spinal cord. The spinal cord descends from the base of the brain and extends in the adult to just below the rib cage. Small nerves ("roots") enter and emerge from the spinal cord through spaces between the vertebrae. Because the bones of the spinal column continue growing long after the spinal cord reaches its full length in early childhood, the nerve roots to the lower back and legs extend many inches down the spinal column before exiting. This large bundle of nerve roots was dubbed by early anatomists as the cauda equina, or horse's tail. The spaces between the vertebrae are maintained by round, spongy pads of cartilage called intervertebral discs that allow for flexibility in the lower back and act much like shock absorbers throughout the spinal column to cushion the bones as the body moves. Bands of tissue known as ligaments and tendons hold the vertebrae in place and attach the muscles to the spinal column.

What Causes Lower Back Pain?

As people age, bone strength and muscle elasticity and tone tend to decrease. The discs begin to lose fluid and flexibility, which decreases their ability to cushion the vertebrae.

Pain can occur when, for example, someone lifts something too heavy or overstretches, causing a sprain, strain or spasm in one of the muscles or ligaments

in the back. If the spine becomes overly strained or compressed, a disc may rupture or bulge outward. This rupture may put pressure on one of the more than 50 nerves rooted to the spinal cord that control body movements and transmit signals from the body to the brain. When these nerve roots become compressed or irritated, back pain results.

Low back pain may reflect nerve or muscle irritation or bone lesions. Most low back pain follows injury or trauma to the back, but pain may also be caused by degenerative conditions such as arthritis or disc disease, osteoporosis or other bone diseases, viral infections, irritation to joints and discs, or congenital abnormalities in the spine. Obesity, smoking, weight gain during pregnancy, stress, poor physical condition, posture inappropriate for the activity being performed and poor sleeping position also may contribute to low back pain. Additionally, scar tissue created when the injured back heals itself does not have the strength or flexibility of normal tissue. Buildup of scar tissue from repeated injuries eventually weakens the back and can lead to more serious injury.

Occasionally, low back pain may indicate a more serious medical problem. Pain accompanied by fever or loss of bowel or bladder control, pain when coughing, and progressive weakness in the legs may indicate a pinched nerve or other serious condition. People with diabetes may have severe back pain or pain radiating down the leg related to neuropathy. People with these symptoms should contact a doctor

(Continued on Page 13)



**Duininck
Bros. Inc.**

GOLF

New Construction • Renovation
Restoration • Laser Leveling Tees
Drainage • Green Construction

800-328-8949
www.dbigolf.com

P.O. Box 208, Prinsburg, MN 56281





My Aching Back –

(Continued from Page 12)

immediately to help prevent permanent damage.

Can Back Pain be Prevented?

Recurring back pain resulting from improper body mechanics or other non-traumatic causes is often preventable. A combination of exercises that don't jolt or strain the back, maintaining correct posture, and lifting objects properly can help prevent injuries.

Many work-related injuries are caused or aggravated by stressors such as heavy lifting, contact stress (repeated or constant contact between soft body tissue and a hard or sharp object, such as resting a wrist against the edge of a hard desk or repeated tasks using a hammering motion), vibration, repetitive motion and awkward posture. Applying ergonomic principles - designing furniture and tools to protect the body from injury - at home and in the workplace can greatly reduce the risk of back injury and help maintain a healthy back. More companies and home-builders are promoting ergonomically designed tools, products, workstations and living space to reduce the risk of musculoskeletal injury and pain.

The use of wide elastic belts that can be tightened to "pull in" lumbar and abdominal muscles to prevent low back pain remains controversial. A landmark study of the use of lumbar support or abdominal support belts worn by persons who lift or move merchandise found no evidence that the belts reduce back injury or back pain. The two-year study, reported by the National Institute for Occupational Safety and Health (NIOSH) in December 2000, found no statistically significant difference in either the incidence of workers' compensation claims for job-related back injuries or the incidence of self-reported pain among workers who reported they wore back belts daily compared to those workers who reported never using back belts or reported using them only once or twice a month.

Although there have been anecdotal case reports of injury reduction among workers using back belts, many companies that have back belt programs also have training and ergonomic awareness programs. The reported injury reduction may be related to a combination of these or other factors.

Quick Tips to a Healthier Back

Following any period of prolonged inactivity, begin a program of regular low-impact exercises. Speed walking, swimming or stationary bike riding 30 minutes a day can increase muscle strength and flexibility. Yoga can also help stretch and strengthen muscles and improve posture. Ask your physician or orthopedist for a list of low-impact exercises appropriate for your age and designed to strengthen lower back and abdominal muscles.

+ Always stretch before exercise or other strenuous physical activity.

+ Don't slouch when standing or sitting. When standing, keep your weight balanced on your feet. Your back supports weight most easily when curvature is reduced.

+ At home or work, make sure your work surface is at a comfortable height for you.

+ Sit in a chair with good lumbar support and proper position and height for the task. Keep your shoulders back. Switch sitting positions often and periodically walk around the office or gently stretch muscles to relieve tension. A pillow or rolled-up towel placed behind the small of your back can provide some lumbar support. If you must sit for a long period of time, rest your feet on a low stool or a stack of books.

+ Wear comfortable, low-heeled shoes.

+ Sleep on your side to reduce any curve in your spine. Always sleep on a firm surface.

+ Ask for help when transferring an ill or injured family member from a reclining to a sitting position or when moving the patient from a chair to a bed.

+ Don't try to lift objects too heavy for you. Lift with your knees, pull in your stomach muscles, and keep your head down and in line with your straight back. Keep the object close to your body. Do not twist when lifting.

+ Maintain proper nutrition and diet to reduce and prevent excessive weight, especially weight around the waistline that taxes lower back muscles. A diet with sufficient daily intake of calcium, phosphorus and vitamin D helps to promote new bone growth.

+ If you smoke, quit. Smoking reduces blood flow to the lower spine and causes the spinal discs to degenerate.

(Editor's Note: This article was prepared by the Office of Communications and Public Liaison, National Institute of Neurological Disorders and Stroke National Institutes of Health, Bethesda, MD 20892.)

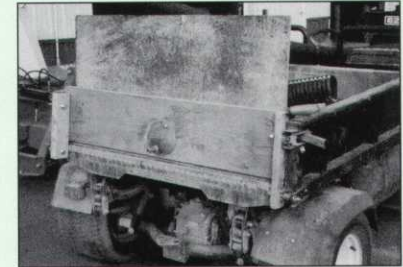
Modifying Truckster Tailgate Simplifies Depositing Gravel At Dacotah Ridge

Over time heavy rain events had taken their toll on the bunkers at Dacotah Ridge. The resulting contamination from the sub grade with fines and silt reached a point that the



water would not pass through to the tile very readily, leaving us with water hazards. Have you heard that story before? You've probably been there, done that.

In late fall we went in and removed the sand a couple feet on



each side of the trench then removed the pea gravel and the tile. After the tile was cleaned it was replaced along with the gravel. The staff discussed and came up with an idea for depositing gravel in the trenches. The truckster, with the modified tailgate, would simply drive along and fill in the trench. The tailgate is a 2 x 12 with a 4-inch hole. The flow of gravel is easily monitored by the angle of the dump bed and the pivoting gate located on the outside of the tailgate. This simple modification saved a lot of backs and labor hours. It worked slick. Give it a try if, I mean when you do your next drainage project.

-- Mike Nelson
Dacotah Ridge Golf Club.

**Install Confidence.
Install Rain Bird®.**



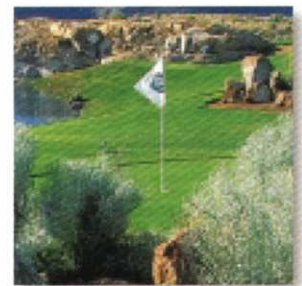
You can relax when you renovate with Rain Bird.

Rain Bird understands that renovation is a major commitment, and we want to be your complete renovation partner. Whether your goals include modernization, improved playability or the need to meet strict watering regulations, we can help you justify and implement a cost-efficient renovation package that's right for you.

Rain Bird products and services offer the unique ability to combine innovation with versatility. We know that your irrigation requirements change with time, so we ensure that our latest innovations will always be compatible with your existing Rain Bird system.

After the installation is complete, we'll be there to help you maintain the quality of your entire system—from central controls to sprinkler heads. Rain Bird knows that a successful renovation includes quality products, excellent service, and a complete commitment to our customers.

So choose Rain Bird, relax, and renovate with confidence.



Call your Hydrologic Representative Authorized Rain Bird Golf Distributor 612-542-1188 or 800-422-1487

The 2005 Minnesota Green Expo

By **LARRY VETTER**
MTGF Executive Director

The 2005 Minnesota Green Expo was quite an event by anyone's standards. Exact figures are still being developed. However, some facts and numbers can be reliably reported. Over 7,000 people attended this year's event in Minneapolis. Over 100 educational sessions were offered during the three days of the Expo featuring speakers from various universities, companies and other governmental agencies from around the country.

Pre-Expo workshops were held in the Hyatt Regency Hotel on Tuesday before the Expo. Three of these had great attendance and feedback forms indicate that attendees were very excited about the content and presentation of the workshop they attended.

The trade show filled two domes in the Minneapolis Convention Center. There were 377 companies occupying the equivalent of 881 booth spaces. That is the maximum that the two domes being used can accommodate. Even with that number of spaces available there was a waiting list of companies that either wanted to exhibit or companies that requested more space than they were currently occupying. In addition to the Trade Show displays, the University of Minnesota filled the lobby area in front of Exhibit Hall E, non-profits occupied the isle on the second level and Association booths were on display behind the registration area in the lobby area of Exhibit Hall D. In total there were 901 exhibits located throughout the show in addition to the University display area.

This year there were several changes made in order to offer additional or different opportunities or events. Some of these were very successful. Others were not. As the Joint Programming Board meets next month to start refining offerings and schedules for the 2006 Expo, these will be addressed individually. The Wednesday All-Industry Reception was moved from the trade show floor to the Ballroom. This change of location was in response to a number of exhibitor requests. A survey of both exhibitors and attendees is currently being conducted to determine if this will be continued next year. The always popular Casino Night on Thursday was



Tim Commers, Cushman Motors, pictured on the right, worked the trade show floor at the Minnesota Green Expo January 5, 6 and 7 at the Minneapolis Convention Center.

changed to Carnival Night featuring a state fair atmosphere. This change was made in an attempt to not have attendees experience "burn-out" due to having the same offering too many years in a row. Again, surveys are being conducted to determine which offering is preferred or what other options might be of interest to attendees.

The Keynote Speaker, Mike McKinley, kicked off the Expo in rousing fashion. Those of you who attended this session were treated to a great presentation of inspiration, relationship building and attitude suggestions. Nearly 1,300 people gave McKinley a "Standing O" at the end of his presentation. Following the Keynote there were nine educational sessions offered in the following hour on a wide variety of topics including pavers in the landscape, PGR's, tree planting options, Poa/bent competition, Turf "101" and others. The only negative comment that I've received about the educational

sessions throughout the three days was "there were so many good things offered I couldn't get to everything I wanted to attend." That is quite a testimonial to the quality of the program that was offered and is an awfully good "problem" to have! Plans are already well underway for the 2006 Expo. There will be a major change that will be noticeable immediately when exhibitors and attendees arrive. The Expo Trade Show is moving to Halls B and C. This will result in several major improvements. First, it will provide an additional 20,000 sq. ft. of exhibit space so that current exhibitors wanting to expand their displays can do so. In addition it will allow new companies who are on the waiting list to be accommodated. In addition, the non-profits and associations will be provided better visibility in a new location. Also the University of Minnesota display area will have much better traffic flow due to a new location.

(Continued on Page 18)

Products Showcased by Affiliates At the 2005 Minnesota Green Expo

LESCO

We at the LESCO booth had introduced a brand new formulation of LESCO FLO. It is called LESCO FLO Ultra. With the LESCO FLO Ultra the rates are the same as the old formulation but the results are a quicker movement to the soil profile with less burn potential and a longer protection of localized dry spots. We had a very good response to the promotion at the booth on this new product.

Plaisted Companies, Inc.

The 2005 Minnesota Green Expo was a tremendous success for our company, thanks to the many, many golf course superintendents and staff that visited our booth. We would like to say thanks to the MGCSA Board of Directors for the 18-Hole Challenge that we were invited to participate in for this year's show and hope it will continue in the future.

Many area courses are looking at replacing bunker sand. We had on display three bunker sands: our own natural brown sand with a penetrometer value of 2.2, Fairmount Minerals Best 50-50 Blend off-white bunker sand with a penetrometer value of 2.6 and Fairmount Minerals Signature 100% Crushed white bunker sand with a penetrometer value of 3.0. The 100% crushed sand is the firmest sand on the market.

We also had on display our 5,600 pound retaining wall block called Stone Strong "Big Block" this year. We are the local manufacturer of this block that has a front face of eight feet long by three feet high and three feet deep.

We have become licensed to produce Cornell University's "CU Structural Tree Soil." This unique product has been developed to grow healthy trees in a concrete environment.

We also had on display lightweight rooftop garden soils used for garden rooftop applications like underground parking ramps and on high-rise buildings to incorporate green space.

All in all, the Minnesota Green Expo has given our company a wide variety of customer contacts and leads.

Simplot Partners

Simplot Partners introduced GreenClean Pro, one of the only non-copper based algacides available on the market today. It is labeled for use on a broad spectrum of algae in a variety of aquatic and surface use sites.

The active ingredient is sodium carbonate peroxyhydrate, commonly called percarbonate. Percarbonate is a stabilized peroxygen chemistry that acts as a powerful algacide without harming the environment.

Green CleanPro works through a powerful oxidation reaction. The peroxygen chemistry reacts with natural elements of surface waters, creating hydroxy free radicals. Hydroxyl free radicals are strong oxidizers that destroy algal cell membranes, chlorophyll and unsaturated fatty acids, providing immediate control of algae.

GreenClean Pro is a completely biodegradable organic and is non-hazardous to fish and aquatic life. Additionally, treated waters are

permissible to be used without interruption (Zero Hour REL).

The professional strength formula eliminates a broad spectrum of algae on contact and is an integral part of an entire water management system. It can be used by itself, in conjunction with biological products, or in rotation with other algacides to help maintain clear, algae-free waters. It is designed for use in lakes, ponds and other large bodies of water.

Simplot Partners can be reached at 651-633-6251 or toll free at 888-828-5354.

Midwest Putting Greens

Midwest Putting Greens designs, installs, and services commercial and residential synthetic putting greens, tee lines, and athletic turf. We are the exclusive representative of "Nicklaus Design" synthetic putting greens.

From custom designed backyard putting greens, synthetic tee lines and target greens for golf courses, par 3 pitch and putt learning facilities, to football, soccer and lacrosse fields, Midwest Putting Greens can design and install a low maintenance, all weather synthetic turf surfaces that will play consistently season after season.

Vijay Singh, Hale Irwin, Sergio Garcia, Mark Calcavecchia, Carin Koch and 24 other PGA/LPGA professionals use our product for pleasure and practice.

Golf Landscapes and Sport Surfaces

Golf Landscapes and Sport Surfaces is an independent dealer interested in acquiring the highest quality products for our customers and installing them in a timely, professional manner. Since 1997 GLSS has been your Midwest leader in synthetic turf sales and installation.

At the Green Expo we exhibited our industry leading SofTrak putting surface and two driving range turfs. Our favorite driving range turfs are SofTee and Country Club. Both are made for hitting surfaces on driving ranges and tee boxes. GLSS has installed all of these products locally including Springhill, The Ponds at Battle Creek, Highland and the new practice facility at Century College to mention a few.

GLSS also provides quality construction and resurfacing of game courts like tennis and basketball. We offer a variety of surfaces to select from including tiles, turf or paint.

GLSS offers a referral program for superintendents and club pros.

Cycle Works of Minnesota

Cycle Works of Minnesota, in its fourth season serving the turf industry, sells liquid organic and food/pharmaceutical grade nutritional soil and turf products. Each year it introduces new products/solutions that will meet the requirements of its customers and enable it to grow as a service provider. In 2004 Cycle Works partnered with Renaissance Fertilizers to offer customers a line of organic granular fertilizers. At Green Expo 2005 Cycle Works introduced three new liquid soil amendment products; Provoke, CBX, and IBA 17. Bio Degradar, a liquid biological thatch degrader was also

introduced.

In addition Cycle Works/Renaissance introduced TURF SHIELD the first EPA registered organic granular fungicide. In 2005 Cycle Works also represents Tri-Mountain, a line of high quality work clothing, golf clothing, jackets and fleece products. MGCSA members will receive our deepest discount pricing. Four Tri-Mountain canvas jackets were displayed at Green Expo and were raffled off each day and one was donated to Casino Night. Cycle Works of Minnesota, Jim O'Neill (612-751-0305) and Doug Daniel (612-868-9615).

Superior Tech Products

Carbon - Power & P.K. Fight
(20-0-4+1%Mg) (3-0-28)

New proprietary formulations of liquid N, P and K are combined with nature's most plant active carbon-based organic acids - Crenic Sapins. Testing by Dr. C. E. Clapp of the USDA ARS at the University of Minnesota-St. Paul showed that the crenic subfraction of humic acids derived from sapric peat soil resulted in superior chlorophyll density for better turf color. Rooting was increased by as much as 80%. PK Fight is a new stabilized form of phosphite phosphorus for superior uptake and conversion into plant energy (ATP). Tested by Floratine for over two years in Scandinavia, these new products resulted in superior growth, color and root development in the early spring through summer months.

Versa-Lok Midwest

Versa-Lok Midwest distributes a premiere selection of products for stunning outdoor environments. Our two main product lines are VERSA-LOK Retaining Wall Systems and Willow Creek Paving Stones. Our display at the Green Expo was built with our popular Weathered series, which gives retaining walls and paving stones a vintage, natural stone appearance. The VERSA-LOK Weathered Standard and Weathered Mosaic retaining walls were accompanied by stairs, freestanding walls and columns—all built using Standard wall units, with no specialty pieces required. The walking surface of our booth was covered with Willow Creek paving stones in the Weathered Brickstone and Weathered Cobblestone styles. The landing of the raised stairway was built with Weathered Circlestone paving stones. Both VERSA-LOK Retaining Wall Systems and Willow Creek Paving Stones offer golf course managers a whole new world of design possibilities for sprucing up your grounds.

Natural Shore Technologies Inc.

Natural Shore Technologies Inc. really enjoyed the chance to display and talk about its wetland and lakeshore restoration products and services at the 2005 Green Expo. We now head into spring 2005 with a continued commitment to supply the highest quality Minnesota native aquatic and wetland plants available on the

(Continued on Page 17)

Green Expo Affiliates –

(Continued from Page 16)

market. We will soon be mailing our 2005 products and services catalog. Many of the great Minnesota native plants that we provide are used to naturalize and beautify ponds and wetlands on golf courses and commercial properties. We look forward to assisting you with selecting native plants or designing a shore or wetland restoration project in the coming year.

Olson Power & Equipment Co.

It was a very good turnout at the Minnesota Green Expo, and there were a lot of great looking booths and displays! We are glad to be a part of this show, because our store has a lot of great machinery to offer to this kind of market. Kubota has just introduced the new RTV Utility Vehicle. They still have the innovative "Grand L Series" Tractors (30-50hp) followed by their little brother the "B Series" Tractors (18-30hp). To go with your tractors we have all of the attachments necessary for them, such as Bush Hog and Virnig, just to name a few. For you excavators we sell and rent the Kubota mini excavators, along with Gehl skid steer loader and ASV Posi Track machines.

Hartman Companies

During the Minnesota Green Expo Jeffrey Hartman, the president of Hartman Companies, was elected to the MGCSA Board of Directors. He is looking forward to helping with the growth of the organization.

Hartman Companies continues its growth to better serve the Sports Turf Industry with an addition to our high-tech slit drainage system, the purchase of a new Blec Ground Breaker lineal aeration system with the attached Blec Sand Master system that installs granular material for drainage. Hartman Companies has also grown with the addition of a new division, Hartman Tree Farm, which specializes in landscaping and irrigation.

Hartman Companies would like to thank our clients for contributing their time and photographs to make our power point presentation at the show a success.

Davis Sun Turf

Jacobsen's redesigned AR-5 was featured in the Davis Sun Turf booth. The AR-5 is powered by a reliable 59 H.P. Kubota diesel engine for better control and hill climbing capabilities. The 5-22" rotary mower decks are convertible from mulching to side discharge, providing versatility and easy adaptation to operator preference. The AR-5 lift arms are designed to continuously keep the cutting decks in the same vertical plane, allowing decks to float straight up and down independently, delivering improved ground following capabilities over irregular contours. A great feature of the AR-5 tractor is that it uses the same platform as the Jacobsen LF series fairway mowers. By using the same platform as the LF series, the Jacobsen rotary and fairway mowers will have increased parts commonality and share the same operating characteristics, making it easy for operators to move from one machine to the next. If you'd like to learn more about this product or schedule an early spring demo please give your salesman a call. Jay Monson (612-963-4239), Tom Fuller (612-802-3149) or Jeff Churchill (612-309-8285).

MTI Distributing, Inc.

The 2005 Minnesota Green Expo provided an excellent opportunity to demonstrate MTI's commitment to the Green Industry. "It is not just about product features," says Butch Greninger. "We are fortunate to represent quality product, but our customers are sharing with us their need for ongoing support, training and responsiveness."

New to the booth this year were Redexim Charterhouse's Verti-Drain, Lely spreaders and our agronomics partners Andersons and Jacklin Seeds among others. These additions have enhanced our ability to service our customers. These, along with Toro, Neary, Turfco, National, Flowtronex and Otterbine, allow us to provide our customers with the highest quality service without exception.

MTI is proud to be a most valued resource to our customer, whether it be purchasing new or supporting existing products. We have invested in 20 service bays at our Brooklyn Center facility. We hired and equipped 5 field-service technicians. These investments, plus significant process improvements, enable us to announce the MTI Plus One program. With MTI Plus One all Toro products sold will come with Toro's standard Two-Year Warranty, plus one year of Comprehensive Toro Protection Plus, courtesy of MTI not included in the Minnesota State Contract per bid specifications. This protection is automatically applied to all products purchased after November 1, 2004.

We displayed our full line of professional services. Designed to augment your existing service technicians, these services enable you to focus your technical staff on their areas of expertise and have MTI's experts do the rest. If your technician has more work than time, contact MTI to see how we can help balance the equation.

The Toro Company stepped forward in a big way at the Green Expo by donating a Greensmaster 3150 for a silent auction, conducted by MTI, for the benefit of all of Minnesota's First Tee facilities. 100% of proceeds from this sale (over a \$22,000 value!) will be divided among these courses who are grooming our next generation of golfers. Please contact MTI with your bid to support the future of golf!

Belgard Paving Stones

Belgard Paving Stones are a tumbled paver with various textures and sizes that give the appearance of natural stone, and are available in an elegant range of styles, patterns and colors. The adaptable line ranges from the large-scale Mega-Bergerac to the versatile Dublin Cobble or the tumbled circle of the

Bergerac. Choose from the extensive, existing color palette or mix the blends for a custom look that is limited only by your imagination. Regardless of the style or shade, Belgard always delivers a high-end quality product that is sure to turn heads. We also have some unique imported natural stone available in a range of sizes and color colors such as Charcoal Patterned Quartzite, Rainforest, Tropical Porphyry and Sonoran Gold Patterned Flagstone. They are available at Hedberg locations in Plymouth, Farmington, Stillwater and Ham Lake.

Renaissance Fertilizers, Inc.

Renaissance Fertilizers, Inc. produces all natural, organic nitrogen soy/feather based granular fertilizers. Renaissance 8-2-6 and 6-0-6 out-performed the competition in two years of testing on Kentucky Blue Grass at Iowa State. We also have blends for gardens and a pre-emergent weed and feed, Renaissance 10-0-0 which is 100% corn gluten meal. It works particularly well on crab grass. For a two ton minimum, we can custom blend, within the limits of organic ratios whatever is required by soil testing. In addition we handle TurfShield, an excellent bio-fungicide for turf which was developed at Cornell University.

We also have organic liquid products. Fertilizers which can go through any standard irrigation system, liquid calcium, growth enhancer and phosphorous/potassium blend. We are represented by Cycle Works of Minnesota.

**WE WOULDN'T BE
RUNNING THIS AD IF WE
DIDN'T ENJOY DOING
BUSINESS WITH YOU.**

We would like to thank you for nearly 50 years of business. We appreciate your support and intend to keep earning your trust and respect. You've certainly earned ours. www.paraide.com



WHEREVER GOLF IS PLAYED

2005 Green Expo—

(Continued from Page 15)

The new space will also give us access to the newer, state-of-the-art meeting rooms. The newer room layout also offers the benefit of vertical movement as opposed to having to walk so far between classrooms. Beginning in 2006 much of the travel between sessions will be via escalators and elevators when moving from one classroom to another. No more having to walk great distances to get to your next educational session. While possibly being on a different floor, most classrooms are within a relatively short distance of the escalators and elevators and the areas to be used have a much more open floor plan.

As mentioned above, plans are already well underway for the 2006 Minnesota Green Expo. The dates will be Wednesday through Friday, January 4 - 6, 2006 with educational sessions and the Trade Show offered on all three days. There will be pre-Expo workshops offered again on Tuesday, January 3, 2006. Pesticide Recertification day will again be on Friday. Again, complete details will be available on the Expo web site, www.minnesotagreenexpo.com, or you can link to that site through the MTGF web site which is www.mtgf.org. The Minnesota Green Expo is one of the best and largest regional events of its kind. It would not be possible without the support of the many companies that exhibit and sponsor this annual event. Please remember this



Lots to see on the Trade Show floor at the Minnesota Green Expo held January 5, 6 and 7 at the Minneapolis Convention Center

when it comes time to make your buying decisions for the coming year. Supporting those who support the Expo is the best way to ensure that this event will continue to grow both in size and quality in the coming years. Have a great 2005 and watch for more information on the 2006 Minnesota Green Expo as plans develop.

when it comes time to make your buying decisions for the coming year. Supporting those who support the Expo is the best way to ensure that this event will continue to grow both in size and quality in the coming years. Have a great 2005 and watch for more information on the 2006 Minnesota Green Expo as plans develop.

LEITNER COMPANY

Specializing in Soils for Golf Course Maintenance & Construction

Soil mixing and processing specialists.

Supplying the Golf Course Industry with soil and sand products for over 60 years.

Material to specification for topdressing and construction.

Quality - Reliability - Experience

MIKE LEITNER
LEITNER COMPANY
945 Randolph Avenue ~ St. Paul, Minnesota 55102
(651) 291-2655

PROUD SUPPORTER OF RESEARCH AND EDUCATION THROUGH THE MGCSA

Simplot

PARTNERS™



Delivering Total Solutions

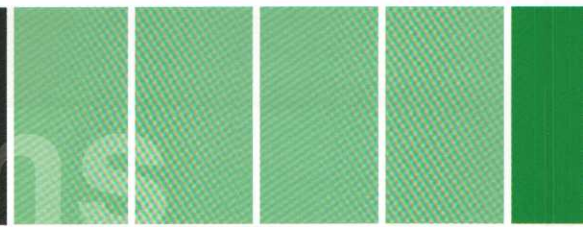


Programs Tailored to Fit What You Need

Simplot Partners™ representatives have the agronomic expertise to help you put together customized programs to meet your every need. Their local experience is backed by a wide variety of products like GrowthPack™, SurfPack™, NutraPack™ and SoluPack™, all proven performers. Whatever you need, whenever you need it - those are just a few of the extras we provide to help deliver outstanding results.

Contact Simplot Partners:

Joe Churchill or Chris Hoff
651-633-6251 • 888-828-5354
www.simplotpartners.com



Toro's 800 Series Sprinkler

Most Chosen By Professionals

MTI

Distributing

is

committed

to your

success!



*Lowest Cost Of
Ownership Improves
Your Bottom Line*

*Fewer parts saves time
and money*

Performance

- Superior Coverage

*Three-nozzle configuration provides
better distribution uniformity, nozzle
flexibility and system efficiency*



Reliable - Works Every Time

*With nearly three times
the surge protection,
the Spike-Guard™
solenoid keeps the
system running*



*Update Your
600 and 700
Series Sprinklers
to 800 Series
Performance*

*Conversion assemblies
make technology
affordable*