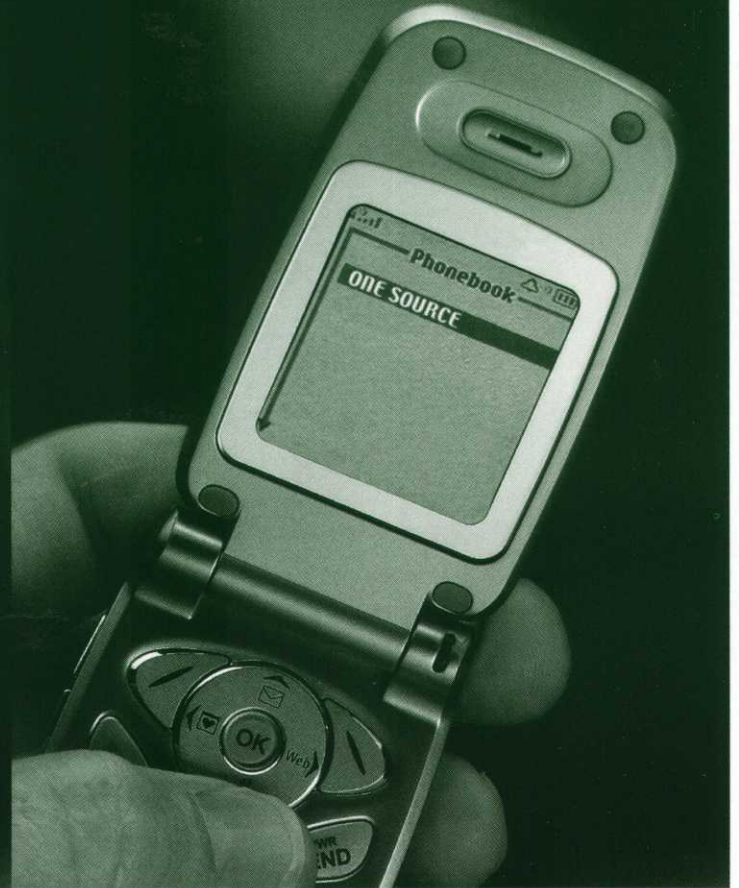
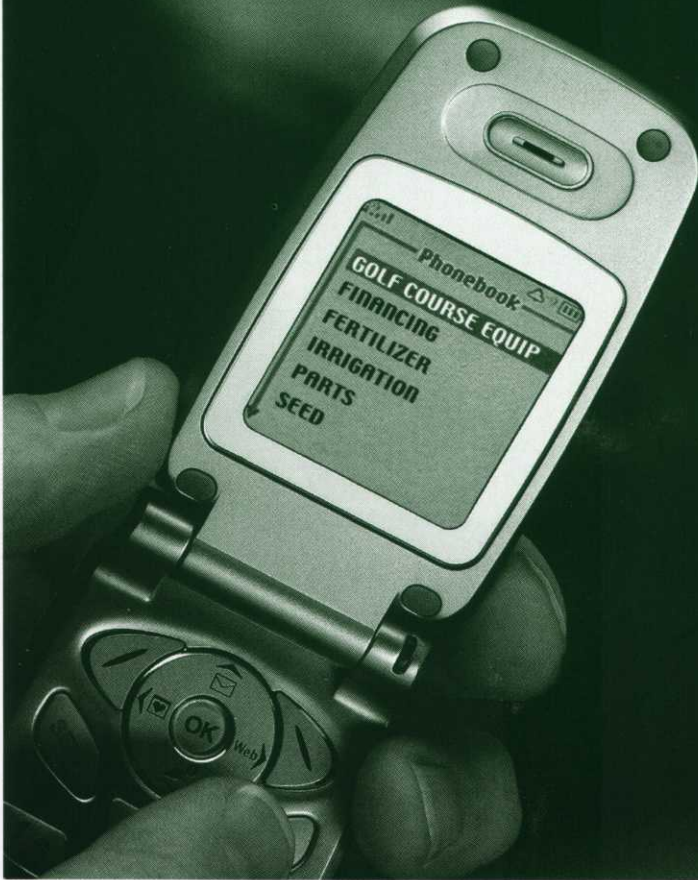


Instead of Calling
Everyone For
Everything...

Call Us.



GREENIMAGE

12040 POINT DOUGLAS DR. S., HASTINGS, MN 55033

CALL US TODAY! 800-950-4180

John Deere Golf & Turf One Source™ is the one call that will give you everything you need. You won't find a wider range of products and professional services anywhere else. While you already know us for the best in equipment, parts, service and financing, our arsenal of products now includes irrigation and drainage expertise, landscaping products and supplies, seed, fertilizer, and more. Call your local John Deere Golf & Turf Distributor to let them show you what John Deere One Source™ is all about.



OFFICIAL
GOLF COURSE
EQUIPMENT
SUPPLIER

ADVANCED MICROBIAL SOLUTIONS • AQUAMASTER • HANCOR
BLUEYELLOW™ PROFESSIONAL • CALCIUM SILICATE CORP. • HOWARD FERTILIZER
HUNTER GOLF • JOHN DEERE LANDSCAPES • NU-GRO • PROFILE
PROGRESSIVE TURF • SPRING VALLEY • TEE2GREEN • TURF SEED INC.

JOHN DEERE GOLF & TURF
ONE SOURCE™



www.johndeere.com/onesource

HOLE NOTES

Official Publication
of the MGCSA

Editor

Jack MacKenzie, CGCS
jmackenzie426@msn.com

MGCSA Board of Directors

OFFICERS

PRESIDENT

Robert Panuska
Waseca Lakeside Club
Waseca, MN 56093
507/837-5996 Fax: 507/835-3472

VICE PRESIDENT

James Bade
Somerset Country Club
Mendota Heights, MN 55118
651/457-1161 Fax: 651/455-2282

SECRETARY

Richard Traver, Jr., CGCS
Monticello Country Club
Monticello, MN 55362
763/295-3323 Fax: 763/271-0124

TREASURER

Jeff Johnson
The Minikahda Club
Minneapolis, MN 55416
612/926-4167 Fax: 612/926-0602

EX-OFFICIO

Rick Fredericksen, CGCS
Woodhill Country Club
Wayzata, MN 55391
952/473-5811 Fax: 952/473-0113

DIRECTORS

Jon Almqvist

MTI Distributing, Inc.
Brooklyn Center, MN 55429
763/592-5721 Fax: 763/592-5700

E. Paul Eckholm, CGCS

Heritage Links Golf Club
Lakeville, MN 55044
952/440-6494 Fax: 952/440-4655

James Gardner, CGCS

The Wilds GC, Indian Hills GC
Prior Lake, MN 55372
952/496-0037

Mike Kelly

Edina Country Club
Edina, MN 55424
952/922-9012 Fax: 952/922-3206

Jack MacKenzie, CGCS

North Oaks Golf Club
St. Paul, MN 55127
651/484-1024 Fax: 651/484-5411

Mike Nelson

Dacotah Ridge Golf Club
Morton, MN 56270
507/644-7844 Fax: 507/644-7053

Dave Oberle

BASF Corporation
Eagan, MN 55123
651-681-8050 Fax: 651-681-1969

Barry Provo

Deer Run Golf Club
Victoria, MN 55386
952/443-3358 Fax: 952/443-3358

Brad Zimmerman

Boulder Point Golf Course
Elko, MN 55020
952/461-4909 Fax: 952/461-4910

BUSINESS OFFICE AND HOLE NOTES OFFICE

EXECUTIVE DIRECTOR

Scott Turtinen

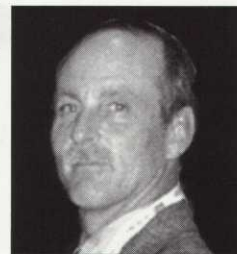
11900 Wayzata Blvd., Suite 130
Minnetonka, MN 55305
952/473-0557 Fax: 952/546-1622
Toll Free: 1-800-642-7227
E-mail: scott@mgcsa.org

www.mgcsa.org

PRESIDENT'S MESSAGE

Free Golf and Lunch at The Crossings At MGCSA's October 11th Meeting

By Robert Panuska



What a perfect day and venue for our annual Harold Stodola Research Scramble at Somerset Country Club on August 16th. James Bade and his staff had the course in outstanding condition. Thank you to everyone who participated. Again thanks to all of our sponsors for your support.

* * * *

Free golf and lunch in October for all MGCSA members at our meeting in Montevideo at The Crossings Golf Club on October 11th. This is possible because of the support we have received from our event sponsors this season. Please take the time to thank them when you have the opportunity. The goal of our monthly meetings is to offer the opportunity to get to know other members and share information as well as enjoy a day of golf and good company. Even though there is no cost, Scott needs to know how many will be attending, so please send in your pre-registration form. I look forward to seeing you there.

* * * *

Death, taxes and change are all sure things in life. As soon as we think "we have it all figured out" regardless of what "IT" is, something comes along and "changes" things. Now we are back at square one trying to "figure out" what went wrong. Well, I don't think in most cases anything actually went wrong, the situation just "changed" and the expected outcome was not what we planned. There is no better example of this than in our profession – managers of turfgrass.

Dealing with multiple variables all the time has become second nature and part of the job. This really came to light for me last month as I was explaining to a member of our club the "process" I use to prepare a site for seeding or sodding. Somewhere around step 5 or 6 his eyes had that glazed-over look and the expression on his face was priceless! "You mean I can't just level it off and roll out the sod?" I soon realized that I had lost him in the "possible problems" and solutions to the "simple" job of laying sod. Back up the truck and let's go out to the actual site and walk through the steps and the "simple" solutions to each problem. Nothing like the "hands-on approach" to get you through a "simple" explanation.

After a very successful job, he came back and thanked me for the advice and help, but more important, he realized that he had no idea what it really took to do such a "simple" job. I forget that we need to slow down and really take the time to explain all those "simple" jobs to our members and committees at every opportunity. We take for granted that everyone knows what we do. WRONG!

Until next month,

Rob

HOLE NOTES (ISSN 108-27994) is published monthly except bi-monthly December/January, February/March for \$2 an issue or \$20 per year by the Minnesota Golf Course Superintendents' Association, 11900 Wayzata Blvd., Suite 130, Minnetonka, MN 55305. Scott Turtinen, publisher. Periodicals postage paid at Wayzata, MN. POSTMASTER: Send address changes to HOLE NOTES, P.O. BOX 617, WAYZATA, MN 55391.

2003-2004 Greens Cover Study Results

By Brian Horgan, Troy Carson and Jon Sass
University of Minnesota

We started this year with much discussion on why so many of our putting greens were in poor condition. We proposed some reasons that centered on the root zone moisture content just prior to the greens being covered (Hole Notes, May 2004).

Unfortunately, the winter cover studies that we conducted at two locations in 2003-2004 were on putting greens composed primarily of creeping bentgrass (TROE Center and Rolling Green C.C.). As such, our research did not replicate the devastating damage that some of you experienced with Poa/bent greens. Regardless, there are some lessons that we learned that will be shared through pictures and brief discussions.

Materials and Methods

The study was conducted on push-up greens comprised



of a mixture of creeping bentgrass and annual bluegrass at Rolling Green CC (RG) and on a USGA green seeded to L-93 creeping bentgrass at the TROE Center on the St. Paul Campus (campus).

The treatments included in the research project were:

1. Uncovered control
2. Basic green/brown tarp purchased from Menards; laid green side up
3. GreenJacket which is a non-permeable cross-laminated high-density polyethylene with reinforcing tabs
4. Crane Creek which is a two layer system with straw placed between the layers. The lower layer is a polyester mesh that is staked to the ground and the upper layer is a non-permeable polyethylene cover that is laced to the lower mesh layer. The lacing attachment process is supposed to allow maximum air exchange. This treatment used 3-4 bales per 1000 ft² evenly spread between the layers
5. American Excelsior which is a four-foot wide roll of wood fiber inside netting. (only included on the USGA green on campus).

The covers were installed the first week of November, 2003 on the greens at RG and the second week of November, 2003 on the campus green. Covers were removed the last week of March, 2004. The plots were rated for turf quality (TQ), color, and percent injury (PI) the day of cover removal and then weekly until all treatments had ratings that were not statistically different. All treatments were replicated three times at each location.

The **Green/Brown** tarp (placed green side up) provided excellent turfgrass protection compared to non-covered turf. However, securing this tarp to the surface is a problem and you can expect when the snow cover is gone, a strong wind can tear the tarp and expose the turf surface.

(Continued on Page 6)



We Take Protecting Your Turf Very Seriously.

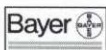
And Why Shouldn't We? It's Your Investment.



Contact your "Turf Expert" at 651-454-3106.



- Concorde
- Concorde DF
- Pentathlon LF
- Junction



- 26 GT
- Prostar
- Bayleton
- Compass



- 50lb Bags
- 1 ton Bags
- Bulk



- Banner GL
- Par Flo
- Spi Max



- Consyst WDG
- Systec 1998Flo



- Primer Select
- Leafshield



- Turfcide 400
- Turfcide10G



- Incide out
- Knockdown



- Teremec SP



- Chloroneb 7.5

2797 EAGANDALE BLVD • EAGAN, MINNESOTA 55121
651-454-3106 • 1-800-551-4857

Greens Cover Study Results—

(Continued from Page 4)

Because of the straw insulation layer in the **Crane Creek** covers, predicting the correct removal time is essential. This year, we waited too long to remove the covers and observed accelerated growth beneath the covers. The turf had grown to 0.75 inches and required several successive mowing height reductions to bring the putting green back to its desired height of cut. We also observed excessive etiolation and some patch-like areas following cover removal. After approximately two weeks the etiolated turf had turned green. The patches, on-the-other-hand took four weeks to heal and kept the TQ ratings suppressed because of it.



The **American Excelsior** covers were only used at the St. Paul campus on the USGA green and they provided good overall TQ and color ratings. (Continued on Page 11)



LESCO **T-STORM**[™] Turf and Ornamental Fungicide

- Systemic action controls wide range of turf and ornamental diseases
- Good tank-mix compatibility
- Available as concentrated flowable or in water-soluble bags



LESCO[®]
www.lesco.com

800-321-5325

LESCO is a registered trademark and T-Storm is a trademark of LESCO Technologies, LLC.



Mission: Greens quality cut. Less compaction.



Accomplish it with the only Super Lightweight Fairway Mower. Jacobsen® SLF-1880™

The Jacobsen Super Lightweight SLF-1880 Fairway Mower was specifically designed to deliver a greens quality cut, faster fairways and reduce turf compaction. Narrow 18" floating cutting heads handle contours perfectly for a precision, Jacobsen cut on undulating fairways. And the SLF-1880 delivers an 80 inch cut with little or no turf compaction due to its light weight. Plus, the ergonomic cockpit helps improve operator productivity.

You also get CustomerOne™ support with every Jacobsen product which means exceptional warranties, OEM parts, dealer service, and superior technical assistance. So, when you want the most productive, greens quality cut for your fairways, depend on Jacobsen. For a free demonstration of the SLF-1880 or other Jacobsen equipment **come see us or give us a call.**



**Get easy payments on equipment, parts and service.
Apply for the Jacobsen Card at your dealer today!**

JACOBSEN
A Textron Company

Jacobsen, A Textron Company
www.jacobsen.com Tel. 1-888-922 TURF (8873)

©2003 Jacobsen, A Textron Company

**Sun
Turf**
Geared for the Green Industry

3080 Centerville Road, St. Paul, Minnesota 55117
651-484-8411 Fax: 651-484-8257 800-592-9513

it's not about
LYING DOWN ON THE JOB

IT'S ABOUT giving you A LEG TO STAND ON

In a highly competitive industry, even the strongest, most independent business can use some help. At Bayer, solving your problems and upgrading the solutions is a big reason why we come to work in the morning. Right now our turf and ornamental division has more than 40 new product innovations in various stages of development. Products that will all come with our 100% guarantee of satisfaction. There are also creative business support and training programs like Accolades[®] and Bayer Academy that can help revitalize and grow your business. To learn more, call 1-800-331-2867 or visit BayerProCentral.com.

**BACKED
by BAYER™**

 Bayer Environmental Science



Stephen Kimball
Sales Representative
(515) 371-4673



Inside This Issue Of Hole Notes

- 3 **President's Message - Robert Panuska**
- 4 **2003-04 Greens Cover Study Results - Horgan, Carson and Sass**
- 12 **It's All About Me: Testicular Cancer**
- 15 **Pinehurst Bound: - Jeff Schaefer**
- 17 **Stillwater Team Wins Stodola**
- 18 **Membership Report - James Gardner, CGCS**
- 22 **Spray Solution pH - John Doyle**
- 23 **MGCSA Board Meeting Highlights**
- 25 **Insight: One Superintendents' Perspective - Paul Diegnau, CGCS**
- 27 **Marking the Other Golf Course Hazard - Your Trees - Brian Netz, CGCS**
- 29 **2003-04 Snow Mold Control Evaluation - Wabler, Jung and Horgan**
- 31 **It's in the Hole**
- 33 **Are Your Trucks and Employees MNDOT Compliant? - Jeramine Gossman**
- 36 **In Bounds - Jack MacKenzie, CGCS**
- 38 **Harold Stodola Scramble Results**
- 38 **Classified Ads**

ADVERTISERS

BASF Corporation	14
Bayer Environmental Science	8
Bonestroo	28
Country Club Turf	39
Cushman Motor Co., Inc	30
Duinnink Bros., Inc.	12
Gill Miller, Inc.	9
Glenn Rehbein	31
GreenImage.....	IFC
Hartman Companies	17
Hydrologic.....	37
Leitner Company	13
Lesco	6
MTI Distributing Co	18
MTI Distributing Co.....	20
MTI Distributing Co.....	21
Northway Irrigation	18
Par Aide Products Co.....	32
Plaisted Companies Inc.....	26
Precision Turf & Chemical	10
Premier Irrigation	24
Simplot Partners	16
Sun Turf	7
Sun Turf	34
Superior Turf Services, Inc.	23
Tiziana Golf Cars	11
Turf Supply Company	5
Turf Supply Company	35
Turf Supply Company	BC
Twin City Seed	28

UPCOMING EVENTS

Monday, September 13
MGCSA CHAMPIONSHIP
Edina Country Club
Edina, Minn.
Host Superintendent: Mike Kelly

Monday, October 11
FALL MIXER
The Crossings at Montevideo
Montevideo, Minn.
Host Superintendent: Terry Negen

January 5, 6, 7, 2005
MINNESOTA GREEN EXPO
Minneapolis Convention Center
Minneapolis, Minn.

COVER PHOTO
No. 8 at Edina Country Club
site of the 2004
MGCSA Championship.



**GILL
MILLER**

INC.

Golf Course Architects

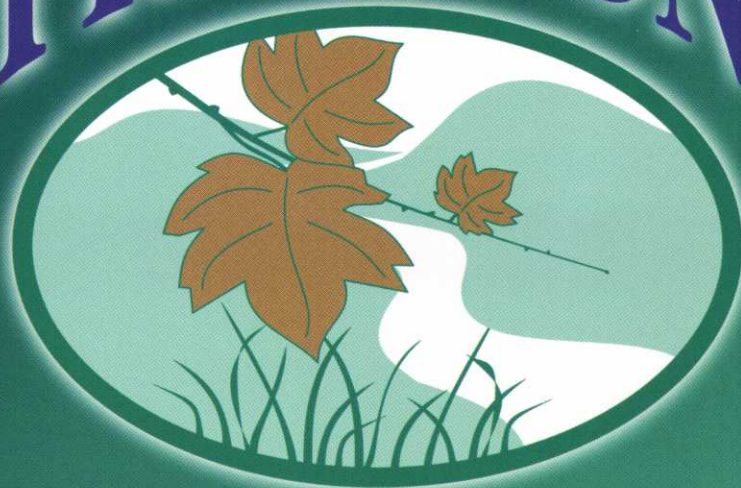
Design • Renovation • Master Planning • Practice Centers

122 North 2nd Street • River Falls, WI 54022 • 715-425-9511 • e-mail: info@gillmiller.com

visit our website www.gillmiller.com

Member: American Society of Golf Course Architects

PRECISION



Turf & Chemical Inc.



Pet Of The Month



4/16/2004

Name: Shay (5), Weimaraner
 Location: Meadow Greens Golf Course (Austin, MN)
 Superintendent: Mike Grinstead

THE COLORS OF SERVICE

Precision Turf Features Products From:



7728 Commerce Circle · Greenfield, MN 55373 · Phone: (763) 477-5885 · Toll-Free: (800) 925-TURF
 www.PrecisionTurf.com · Email@PrecisionTurf.com