



TORO[®]



Toro's Revolutionary new Greens Aerator is now available! The productive 48" aeration swath will let you aerate 18 holes in just one day. Plus, the tires won't run over cores or freshly aerated soil. Aerate down to 4 inches consistently, even through undulations, thanks to Toro's innovative ground-following mechanism that adjusts the coring head on the fly.

Call MTI today to arrange a demo - you'll be glad you did!

For commitment and high quality, contact MTI Distributing!



4830 Azelia Avenue North #100
Brooklyn Center, MN 55429
763-592-5600 800-362-3665
www.mtidistributing.com



TORO[®]

Count on it.



The MGCSA Research Committee Extends Thanks To the Following Members For Donating to the 2004 Research Fund



DOUBLE-EAGLE CLUB

(\$300+)

LARRY THORNTON SUPERIOR TURF SERVICES COMPANY

EAGLE CLUB

(\$100 - \$299)

KURT HOLVALDT MARSHALL GC IND/CLUB
GREG HUBBARD MANITOU RIDGE IND/CLUB
STEVE GARSKE PAR AIDE PRODUCTS COMPANY
JOHN GLATTLY TWIN CITY SEED CO. COMPANY
JEFF JOHNSON MINIKAHDA CLUB CLUB
MIKE LEITNER LEITNER COMPANY COMPANY
TOM LUNDGREN KATE HAVEN GC CLUB
JAMES NICOL, CGCS HAZELTINE NATIONAL GC CLUB
TOM PROSHEK BRACKETT'S CROSSING CLUB
MATT ROSTAL INTERLACHEN CC CLUB

BIRDIE CLUB

(\$50 - \$99)

JAMES BADE SOMERSET CC IND/CLUB
JOE CHURCHILL SIMPLOT PARTNERS COMPANY
MARLOW HANSEN FOREST HILLS GC IND/CLUB
DAN HANSON ST CLOUD CC IND/CLUB
SCOTT HOFFMANN, CGCS MADDEN'S ON GULL IND/CLUB
TROY JOHNSON HUDSON GC CLUB
ANDY KEYES WINDOW CC IND/CLUB
MATT MCKINNON THE LEGACY COURSES INDIVIDUAL
RICHARD MEYERS FARMERS GOLF IND/CLUB
DAVID OBERLEE BASF COMPANY
ERICK PETERSON DELLWOOD HILLS GC CLUB
BARRY PROVO DEER RUN GC CLUB
GREG SPENCER BROOKVIEW GOLF CLUB
RICK TRAVER, CGCS MONTICELLO CC IND/CLUB
GRANT WENKSTERN LAKEVIEW & RED OAK INDIVIDUAL
DALE WESSELMAN LANDTEK GOLF GROUP INDIVIDUAL
TOM WODASH EAGLE CREEK GC IND/CLUB
BRAD ZIMMERMAN BOULDER RIDGE GC CLUB

PAR CLUB

(\$25 - \$49)

RANDY ADELSMAN EMERALD GREENS GC CLUB
RANDALL ALLEN TARTAN PARK GC CLUB
JON ALMQUIST MTI DISTRIBUTING COMPANY
DARREN ARMSTRONG MA CAL GROVE CC CLUB
JEFF BACKSTROM CANNON GC CLUB
KERRY BARIBEAU EDINBURGH USA INDIVIDUAL
SAMUEL BAUER FIRST TEE OF BLAINE INDIVIDUAL
CHAD BELLAND ONEKA RIDGE GC CLUB
KEVIN BENSON BENT CREEK GC CLUB
MARK BOONSTRA HOLLYDLAE GC CLUB
BRIAN BROWN CHISAGO LAKES GC CLUB
MICHAEL BRUAL FARIBAULT GOLF & CC CLUB
JASEN BULLOCK CHIPPEWA VALLEY GC INDIVIDUAL
DALE CALDWELL, CGCS MINNEAPOLIS GC CLUB
ANDREW CARLSON TPC OF THE TWIN CITIES INDIVIDUAL
DOUG DANIEL CYCLE WORKS INDIVIDUAL
DAVID DEEM WILD MARSH GC CLUB
NANCY DIEPENBROCK CANNON GC CLUB
DOUGLAS DIETER FOX HOLLOW GC INDIVIDUAL
GREG DOBBS HAYWARD GOLF CLUB
SCOTT DREVER ROSE LAKE GC INDIVIDUAL
RICKY ELLESTAD WHITEFISH GC INDIVIDUAL
SHAUGHN ERICKSON MANITOU RIDGE GC INDIVIDUAL
STEVEN ERIE DACOTA/RIDGE GC CLUB
DALE EVENS MEADOWBROOK GC INDIVIDUAL
THOMAS FISCHER, CGCS EDINBURGH USA CLUB
JEFF FITZMORRIS ST CROIX NATIONAL GC INDIVIDUAL
CHRIS FOSSEN SHORELAND CC CLUB
BOB FRANK MTI DISTRIBUTING COMPANY
RICK FREDERICKSEN, CGCS WOODHILL CC CLUB
JEFF GAJDOSTIK AMERY GC CLUB
JAMES GARDNER, CGCS THE WILDS/INDIAN HILLS INDIVIDUAL
JOHN GRANHOLT EAU CLAIRE GOLF & CC CLUB
BUTCH GREENINGER MTI DISTRIBUTING COMPANY
JARED HACKENMUELLER CEDAR CREEK GC CLUB

ALLAN HANSON VIKING MEADOWS GC INDIVIDUAL
JEFFREY HANSON TARTAN PARK GC CLUB
CHRIS HASBROUCK DAYTONA GC CLUB
CRAIG HENDRICKSON OAK RIDGE CC INDIVIDUAL
SCOTTIE HINES WINDSONG FARM GC INDIVIDUAL
AJ HODGES RENAISSANCE FERTILIZERS COMPANY
CHRIS HOFFMANN, CGCS SIMPLOT PARTNERS COMPANY
CRAIG HOLDEN SUSTANE FERTILIZERS COMPANY
GRAYLING IHLE MINN-IOWA GC CLUB
TIM JANSMA GEM LAKE HILLS GC CLUB
THOMAS JOHANNES BEMIDJI TOWN & CC CLUB
MATTHEW JOHNSON NORTH OAKS GC CLUB
TOM JOHNSON NEW RICHMOND GC CLUB
JAMES JOHNSON, CGCS RICH SPRING GC INDIVIDUAL
PAUL JONES TEE SHOT MARKETING COMPANY
MICHAEL KELLY EDINA CC CLUB
JEFF KELM PHEASANT HILLS GC INDIVIDUAL
RILEY KIEFFER DACOTA/RIDGE GC CLUB
DAVID KIRSCHT KIRSCHT ASSOCIATES COMPANY
ROGER KISCH SOUTHVIEW CC CLUB
MICHAEL KNODEL OAKDALE GC CLUB
KURT KNOX INTERLAKEN GC CLUB
CHARLES KORNMANN FOX HOLLOW GC CLUB
DAVID KSIAZEK PHALEN PARK GC INDIVIDUAL
RICK LAPORTE TARTAN PARK GC CLUB
JEFF LARSEN DAKOTA WINDS GC COMPANY
WILLIAM LARSON, CGCS TOWN & COUNTRY CLUB CLUB
BRUCE LELAND BRIDGE AMERICA, INC. COMPANY
PAUL LEONARD MITI DISTRIBUTING COMPANY
MIKE LIGDAY MANITOU RIDGE GC INDIVIDUAL
DARWIN LINDSEY DETROIT CC CLUB
ERICK LUSTER MANITOU RIDGE GC INDIVIDUAL
PATRICK LYNCH PREMIER IRRIGATION COMPANY
JACK MACKENZIE, CGCS NORTH OAKS GC CLUB
CHAD MAENKE BURL OAKS GC CLUB
DOUGLAS MAHAL, CGCS THE JEWEL GC CLUB
JOHN MALLORY BEARPATH GOLF & CC CLUB
ROBERT MCKINNEY, CGCS MENDAKOTA CC CLUB
RUSS MELTON FOLEY & MANSFIELD COMPANY
MARK MOERS CHASKA TOWN COURSE CLUB
PETE MOGREN OAK GLEN CC CLUB
JOHN MONSON LONG PRAIRIE CC INDIVIDUAL
JOE MORIS TARTAN PARK GC CLUB
JOE MULLANY MTI DISTRIBUTING COMPANY
THOMAS NATZEL BURL OAKS GC CLUB
MIKE NELSON DACOTA/RIDGE GC CLUB
KYLE NYGAARD ROYAL WOOD GOLF & CC INDIVIDUAL
DONNACHA O'CONNOR ALEXANDRIA GC INDIVIDUAL
NORMA O'LEARY SILVER BAY CC CLUB
TERRY OLMEM MTI DISTRIBUTING COMPANY
JIM O'NEILL CYCLE WORKS INDIVIDUAL
DENNIS PERREAULT PHEASANT ACRES GC CLUB
TODD PLAISTED PLAISTED COMPANIES COMPANY
TONY RAHE DACOTA/RIDGE GC CLUB
LYNN RICHERT ANGLUSHIRE GC INDIVIDUAL
MARK ROBEL CHENEQUA CC INDIVIDUAL
RANDY RYSKI MTI DISTRIBUTING CLUB
JEFFREY SCHAEFER NORTH OAKS GC CLUB
KEITH SCOTT, CGCS OAK RIDGE CC INDIVIDUAL
MARK SEVERSON NEW HOPE GOLF INDIVIDUAL
MARK SMITH, CGCS THE QUARRY INDIVIDUAL
THOMAS ST GEORGE SOLDIERS FIELD GC INDIVIDUAL
JOHN STEINER, CGCS WHITE BEAR YC CLUB
RICH TAYLOR GOLF CAR MIDWEST COMPANY
CRAG VIGEN, CGCS FARGO CC CLUB
JEFF VINKEMEIER GLENCOE CC CLUB
SCOTT WELTZIN, CGCS PHEASANT ACRES GC CLUB
JEFF WENDLER OAK GC CLUB
ROBERT J. WESTON MILLE LACS GOLF INDIVIDUAL
BILL WHITWORTH NORTHFIELD CC CLUB
DAVE WICKLUND PIONEER CREEK GOLF CLUB
TIM WICKLUND CEDAR CREEK GC CLUB
ALLEN WILHELM RIVERVIEW GC CLUB

Coffee and Mayonnaise

When things in your life seem almost too much to handle, when 24 hours in a day aren't enough, remember the mayonnaise jar...and the coffee cup...

A professor stood before his philosophy class and had some items in front of him. When the class began, wordlessly, he picked up a very large and empty mayonnaise jar and proceeded to fill it with golf balls. He then asked the students if the jar was full. They agreed it was.

So the professor then picked up a box of pebbles and poured them into the jar. He shook the jar lightly. The pebbles rolled into the open areas between the golf balls. He then asked the students again if the jar was full. They agreed it was.

The professor next picked up a box of sand and poured it into the jar. Of course, the sand filled up everything else. He asked once more if the jar was full. The students responded with a unanimous "yes."

The professor then produced two cups of coffee from under the table and poured the entire contents into the jar, effectively filling the empty space between the sand. The students laughed.

"Now," said the professor, as the laughter subsided, "I want you to recognize that this jar represents your life. The golf balls

are the important things - your God, family, children, health, friends, favorite passions - things that if everything else was lost and only they remained, your life would still be full. The pebbles are the other things that matter like your job, house, and car. The sand is everything else - the small stuff.

"If you put the sand into the jar first," he continued, "there is no room for the pebbles or the golf balls. The same goes for life. If you

spend all your time and energy on the small stuff, you will never have room for the things that are important to you. Pay attention to the things that are critical to your happiness. Play with your children. Take

time to get medical checkups. Take your partner out to dinner. Play another 18. There

will always be time to clean the house and fix the disposal.

"Take care of the golf balls first, the things that really matter.

Set your priorities. The rest is just sand."

One of the students raised her hand and inquired what the coffee represented.

The professor smiled. "I'm glad you asked. It just goes to show you that no matter how full your life may seem, there's always room for a couple of cups of coffee with a friend."

*Pay attention to
the things that are critical
to your happiness*



Superior Turf Services, Inc.



SUPERIOR ORGANIC

DESIGNED FOR PERFORMANCE, HOMOGENEOUS PRILL,
THE FINEST IN COMBINED TECHNOLOGIES

Country Club

Lebanon
TURF PRODUCTS

NX-PRO

COMPOSITE
TECHNOLOGY

8-2-10 Plus

Greens
& Tees

14-0-14 Fe

Fairways
& Tees

15-2-5

Roughs & High
Wear Areas

BIOPRO®

NEW FOR SUMMER 2004

Mega-Phos

Potassium Phosphite

- Low Rates
- Higher Active Ingredient
- The Last Word in Phosphite Products

SEED RESEARCH

GENETICALLY SUPERIOR BENTGRASSES FROM THE WORLD'S MOST COMPLETE BENTGRASS PROGRAM

FOR SUPERIOR TURF SERVICES, CALL: LARRY THORNTON

612-804-1692

Premier

commitment to

Quality

irrigation, inc.

Providing Quality Golf Course & Athletic Field Irrigation



new course
Construction



2 YEAR WARRANTY
ON ALL NEW IRRIGATION SYSTEMS



- **New Golf Course Construction**
- **Certified Irrigation Contractor**
- **Licensed, Bonded & Insured**
- **Flexible Installation Schedule**
- **Financing Options Available**
- **Renovations, Additions & Upgrades**
- **Pump Stations & Retrofits**
- **Fountain & Aerators**
- **Repair & Service**
- **Winterization & Start-ups**

Premier Irrigation, Inc. is the only irrigation contractor also to be licensed by the Minnesota State Board of Electricity as a Class "A" Electrical Contractor.

This distinct advantage allows us to do all our own electrical work without involving other subcontractors

renovations,
additions &
Upgrades



Premier irrigation, inc

Hastings, MN 55033

Call to Schedule a Free Site Visit

621-480-8857 • 651-480-8854 Fax



GOLF COURSE IRRIGATION INSTALLATION NEW GOLF - RETROFIT SYSTEMS

We can:

- * Install new Golf Irrigation Systems
- * Clubhouse lawn and entry irrigation systems.
- * Help with renovation of your green, tee and fairway irrigation.

We are members of:

- * MGCSA
- * MNLA
- * Irrigation Association
- * Licensed by the Board of Electricity
- * Certified Irrigation Contractor
- * Certified Irrigation Auditor

Contact Bob Reihe

Northway Irrigation

Office 763.786.4379 Fax 763.786.2620
Cell 612.363.0999



Brian Netz Receives Professional Certification

Brian C. Netz, GCSAA golf course superintendent at The Presidio Golf Course, San Francisco, Calif., has been designated a Certified Golf Course Superintendents (CGCS) by the Golf Course Superintendents Association of America (GCSAA).

Netz has been the superintendent at The Presidio Golf Course since July 2003.

GCSAA instituted the certification program in 1971 to recognize outstanding and progressive superintendents. Approximately 1,900 golf course superintendents worldwide, currently hold "CGCS" status.

As part of the certification process, an on-site inspection of Netz' golf course operation was conducted by two certified golf course superintendents: David A. Sexton, CGCS, The Meadow Club, Fairfax, Calif.; and Kevin M. Prysski, CGCS, Stone Tree Golf Club, Novato, Calif.

Visit GCSAA at www.gcsaa.org. For more information, contact Netz at (415) 561-4615 or bnetz@palmergolf.com

(Editor's Note: Please read Brian Netz' article entitled "Is Minnesota Going California?" on Page 5 of this issue of Hole Notes. Brian is also a member of the Minnesota Golf Course Superintendents' Association.)

Simplot
PARTNERS™



On Target



Introducing Turf Seed That's Perfect Right Here

Our Top-Performing Preformulated Turfgrass Seed:

- Contains Only Those Varieties That Work Best Right Here
- Is Grown by Leading Producers
- Will Be Right on Target Every Time

Contact Simplot Partners:

Joe Churchill, Chris Hoff or Dale Parske
Toll Free (888) 828-5354 or (651) 633-6251

www.simplotpartners.com

© 2003 J.R. Simplot Company. All rights reserved.

'New' Highland Park to be Flagship of St. Paul Courses

Reconstruction Mixes Best of Old With Most Advanced of New Practices

When reconstruction of the City of St. Paul's Highland Park National Golf Course is complete later this year, the course will feature the best of two worlds. Those worlds range from the beauty of its mature trees and the spectacular view that overlooks the metro area to those of the most advanced practices in golf course construction.

The course, which has been redesigned and was put to bed last fall with the greens and tees seeded in a four to six-inch layer of an 85-15 ratio of sand to peat, is now in the grow-in stage that is expected to make it the flagship of the four golf courses owned and operated by the City of St. Paul.

Features are Kept

Retained from the past in the \$3.5 million project are the magnificent trees - some as old as the course itself - along with the ornate Spanish mission style clubhouse. "It sure won't be like a suburban golf course that has been built into a cornfield," Ken Wehrle, project manager for the city, says of the course, which overlooks the downtowns of Minneapolis and St. Paul from one of the highest points in the Twin Cities.

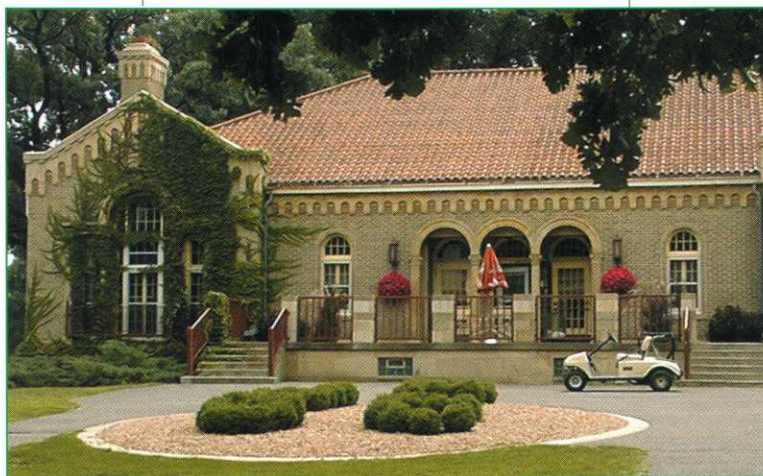
Newly incorporated into the 135-acre site is a reshaping of the contour of the golf course, an elaborate storm water and sub-surface drainage system, a reconfiguration of the layout of the holes to reduce play into the sun and to have the holes start and finish closer to the clubhouse, a new 55-station range, and new greens and tees built to the highest of USGA standards. "I'm really pleased with the way that things are turning out," Wehrle says of the work that has been done. "I'm happy with all of the contractors; they're a quality group. I think we've solved all the problems that we wanted to solve."

First Opened in 1926

Many of those problems were almost as old as the course, which was developed shortly after the city purchased the land in 1925. The first nine holes were opened in 1926. The second nine were ready for play

in 1927 and the clubhouse was constructed in 1929. Although his involvement is not substantiated, the design of the clubhouse is similar to other works by Clarence Wesley Wigington, the nation's first black municipal architect and an employee of the City of St. Paul from 1915 until 1949.

Reasons for the reconstruction include that it didn't drain very well and had a



high water table, which made maintenance difficult and affected playability of the course. A focus of the project, which was designed by golf course architects Paul Miller and Garrett Gill of Gill Miller, Inc., River Falls, Wis., was to properly grade and drain the site to accommodate ground water and to facilitate play immediately following storm events.

More Than a Renovation

"It's a totally new golf course now, not just a renovation of what was there," Gill says. "The course has a new configuration and new routing and it has been lengthened to just over 6,600 yards. It is remarkably different and yet, we have preserved virtually all of the mature trees that have been very much a part of the golf course. When it re-opens, the course will look as if it has trees that have been there for the 80 years, which many of these large trees have been."

The beautiful, old clubhouse had served little function in recent years in the old design. In the new design, the starting and finishing holes have been brought back to the clubhouse to give it a much bigger influence on the course. The par 72

course will have multiple tee sets with junior tees on several holes. The sale of golf tickets, along with the pro shop, will be moved to the clubhouse.

Greens and Tees Critical

The construction of USGA grade greens and tees was a critical component of the project, Gill relates. "Dakota Peat provided the peat for the greensmix and its sister company, Dakota Analytical, was responsible for all the protocol testing to determine and maintain the proper blending to meet the specs. The thing about Dakota Peat is that it can meet USGA specs over a wider use of sand. This was particularly helpful to the contractor (C. S. McCrossan, Inc., Maple Grove, Minn.), which was using sand from its pits."

Dakota Analytical, one of only eight A2LA-accredited labs in the world (seven are located in the United States with the eighth in the United Kingdom), worked with Gill Miller to establish and monitor the quality control limits. "We were working with a new sand company (McCrossan) and we needed to bring the sand into compliance," Diane Rindt, Dakota Analysis manager and chemist, says. "McCrossan did a good job of that. They washed the sand and we did a sieve analysis to determine the appropriate particle size before determining the optimum mix."

Course superintendent Denise Kispert was impressed. "The rootzone mix looked beautiful," she says. "The Dakota staff was really supportive. They were on site several times and really kept us informed and updated on each step of the project." Quality control tests were done on each 1,000 tons of the 85-15 mix. "There was really good communication between all parties," Rindt notes. "Bob (Oelke, Dakota's staff agronomist) did a good job of coordinating communication on our part of the project."

The overall supervision provided by Gill Miller was also very good, Oelke notes. "I was impressed by their attention

(Continued on Next Page)

Highland Park—

(Continued from Previous Page)

to detail. They were meticulous in their follow through and were on the job regularly. And McCrossan, which was doing its first golf course job, was really thorough, too. They have an abundance of high tech equipment for shaping bunkers, tees and greens, and they really wanted to do things right. All the checks and balances on this project were very good."

First Golf Course Job

An experienced earth-moving contractor specializing in heavy, highway and commercial projects, McCrossan was doing its first golf course project. "This was our first golf course job," says McCrossan project manager Troy Weis. "We had been interested in getting into golf course work for several years but nothing had come across our plate before this project.

"Most golf courses are privately owned and bidding is done by invitation only, so if you hadn't done golf course work in the past it was difficult to break into the business. This, being a project where there would be competitive bidding, we thought we'd give it a shot."

While McCrossan was new to golf course work, the company's extensive use of GPS equipment was not. "We have equipment installed right on our earth movers. Our dozers have small computers to show the operator just how much cut or fill is needed at each specific point on the job. We can grade without a lot of need for elevation stakes," Weis says. "Using GPS makes a job much easier and much more efficient."

Scott Greenseth, an experienced golf course shaper, participated with McCrossan in the final shaping and detailing of the golf course.

Other contractors working on the project were Premiere Irrigation, Hastings, Minn., which did irrigation and electrical work; Heikes Farms, of Lakeville, Minn., which did the seeding, sodding and erosion matting work and Morris Excavating & Drainage, Jordan, Minn., which assisted McCrossan with some of the subsurface drainage work. The new course will have a fully automatic, radio-controlled Toro irrigation system.

Clubhouse is Landmark

While the course is being updated to a first class facility, funding needed to bring the clubhouse back into top shape has not yet been fully secured, according to Vince

Gillespie, who as manager of special services for the City of St. Paul is in charge of all four of its golf courses.

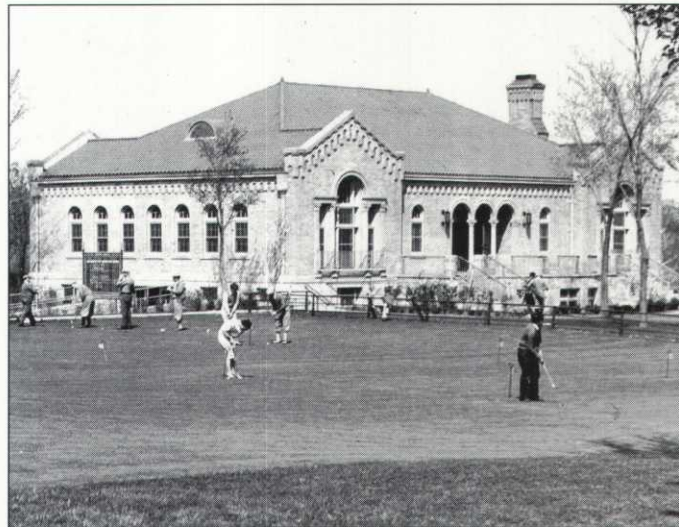
The clubhouse, an important landmark within the Highland Park community, is built of limestone and has stone columns and a red tile roof. The building, which is virtually unchanged since its original construction, is eligible for designation to the National Register of Historic Places.

"We're still hoping to find all the funding for that project," Gillespie says. The clubhouse is in need of both exterior and interior work to preserve its historical character and to make it a more useful resource for the community.

One area that could provide some of the funding for that project and for other needs, he says, is the sponsorship program that is being initiated in which 24 business sponsors are being sought to commit from \$10,000 to \$15,000 each to support special projects.

Lifetime Memorials

In addition, the 10 ponds that were created to control ground and storm water will be sold and signed as lifetime memorials. "This can be done in memory of



someone who played or caddied on the course, or may have had some other involvement with the course or in the community," Gillespie says. "It is a way for people to build a memory for a family member." About the renovation schedule for the course, Gillespie says, "Everything is looking pretty good. We hope to be hitting off the practice range grass later in the year. The course itself probably won't be re-opened until the spring of 2005. We don't want to re-open it prematurely; we have too much of an investment in the course to risk that."

The re-opening schedule, by Oelke's determination, might be a little conservative. "With the 85-15 mix, which is a click above normal," he says, "we'll have tees and greens that will be ready to rock long before the course is scheduled to be re-opened. The performance of the turf," he says, "won't come up short."

Snoopy Bunker

A Snoopy-shaped sand bunker is among the features of the rebuilt Highland Park National Golf Course in St. Paul that is planned to re-open in 2005.

Designed and built as a tribute to Snoopy creator Charles Schulz, the feature is located on the 15th hole and includes a pond.

"This was the home course of Charles Schulz, who had caddied and played there as a youth," Garrett Gill of the Gill Miller, Inc. golf course architectural firm, says. "So, as a tribute to him, Paul Miller of our firm came up with the idea of putting in a Snoopy bunker. This has gotten national recognition. Mrs. Schulz and the Schulz Foundation have approved the feature."



CLASSIFIED ADS



FOR SALE
 1994 Kawasaki Mule 2520
 2 wheel drive with differential lock
 Manual dump box
 Metal cage with doors
 Newer engine (3 hours) and rear tires
 Light package
 Assorted parts including carburetors
 and starter
 Parts & Service Manuals
 Perfect for use as range vehicle, \$1995
 Contact : Greg or Mike
 Manitou Ridge Golf Club
 651-777-1436 ext 4

FOR SALE
 1970S Model Mete-R-Matic
 Topdressor Self Propelled
 5 H.P., 1/2 Cubic Yard Box
 Good Shape \$400 or best offer
 Wapicada Golf Club
 St. Cloud
 Mike 320/309-1019
 Scot 320/309-1020

FOR SALE
 9-N Ford Tractor 3pt, Turf Tires,
 New Engine \$3200
 attachments:
 Fert Spreader 1 yr old \$1800 obo
 Jac seeder mint \$1500 obo
 Leaf blower \$700 obo
 Blade \$250 obo
 - Reelmaster 223-D Good reelstock \$2300
 - Cushman Sprayer 100 gal, PTO,
 w/ boom \$1000
 - Riding Greensmower Jac 4
 Sharpened & rebuilt reels \$2200
 - Turfco topdresser, new belt \$3000 obo
 Contact: Chris Klätte, Elm Creek G.C.
 218-522-0812

WANTED
 60" Deck for a Jac 4206
 Will consider whole mower with
 bad engine for parts.
 Contact: LeRoy Bleyhl
 Dawson Golf Association
 320-226-0512

FOR SALE
 7-Spartan reels, model 01077.
 Good stock on 7 blade reels.
 Many new and used parts included.
 10 Sets Barely Used Club
 Car Wheel Covers. Best Offer.
 Contact: Mike Cohrs
 Bluff Creek Golf Course
 612-799-0605

FOR SALE
 1986 Trail Vac, pull type, 4 cyl. Wisc., 250
 hrs., fair cond. \$300 / offer
 1986 Olathe Model 134 Plug Pusher, new.
 Fits Toro GM3000 Greensmower.
 - \$100 / offer
 Tires and Rims (2) - Brand New off Toro
 GM228 23 x 8.50 - 12 - \$150
 1994 Toro RM216, 8 blade, 1,883 hrs.,
 - \$1,000
 1996 Toro RM216, 8 blade, 714 hrs., - \$1,500
 1987 John Deere 36"
 walk behind rotary, - \$350
 Six volt golf cart batteries, new, qty. 6, - \$100
 Contact: Tom Fischer
 Edinburgh USA
 763-315-8575

FOR SALE
 1996 National 68.....
 electric start, transport gear,
 excellent condition.....
 approx 400 hours. \$3,500
 Contact: Steve or Gary 218-346-6071,
 218-849-8158

FOR SALE
 1998 Ransomes AR 250, EnviroDecks,
 Ready to Mow \$5000
 Toro Park Master, 7 gang-5 Blade Reels,
 Hydraulic Lift, Ready to Mow \$2000
 MN Wahner Skid Mount Spray Rig,
 120 Gallon \$500
 Jake Walk Mower \$300

Contact: Tom Watters
 Mendakota Country Club
 651/454-1441

FOR SALE
 11 Toro Osmac RDR wide band satellites
 (includes Pedestal) 3 with 24 stations,
 8 with 16 stations \$250 each
 Vicon spreader \$200
 18 Bayco ballwasher bases-black
 \$20 each
 Contact: Mike Bohningstingl
 218/963-7732

FOR SALE
 1996 Toro 5100D/2200 hrs.
 Contact: Mike, Dave or Jeff
 Green Lea Golf Course
 507-373-1061

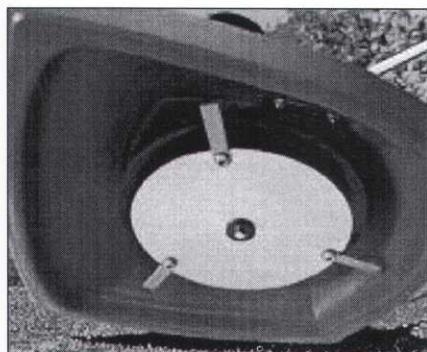
FOR SALE
 1991 Ryan GA 30 - \$2000
 Perfect Condition
 Contact: Kevin Froemming
 320/587-2785

FOR SALE
 Set of Toro Triplex Dethatching Reels.
 Three years old. - \$1,200
 Contact: Hugh Lynch
 StoneRidge Golf Course
 651-998-0698

More ads at www.mgcsa.org

HOVER MOWER™

By Eastman Industries

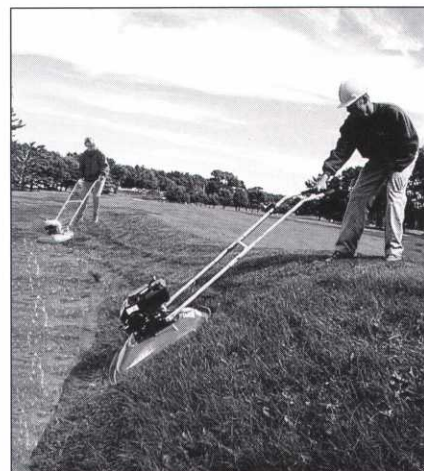


**ONE YEAR
 COMMERCIAL
 WARRANTY**

INNOVATIVE ENGINEERING... EFFORTLESS MOWING

FEATURES:

- + Exclusive, reversible. **Stainless Steel Blades** for a clean, sharp cut.
- + **Adjustable cutting heights** 1/2" - 3" - optional lift kit for 4" cut height.
- + **Rugged deep deck** with metal handle brackets to withstand extreme punishment.
- + **Largest impeller in the industry** offers superior hovering and eliminates scalping.
- + **Ergonomically designed 52" handle** for long reach.



16" & 19" Models

Call Tim Commers or
 John Sniker today....
 (612) 333-3487 or
 Toll Free 1(800) 759-5343

CUSHMAN MOTOR CO., INC.

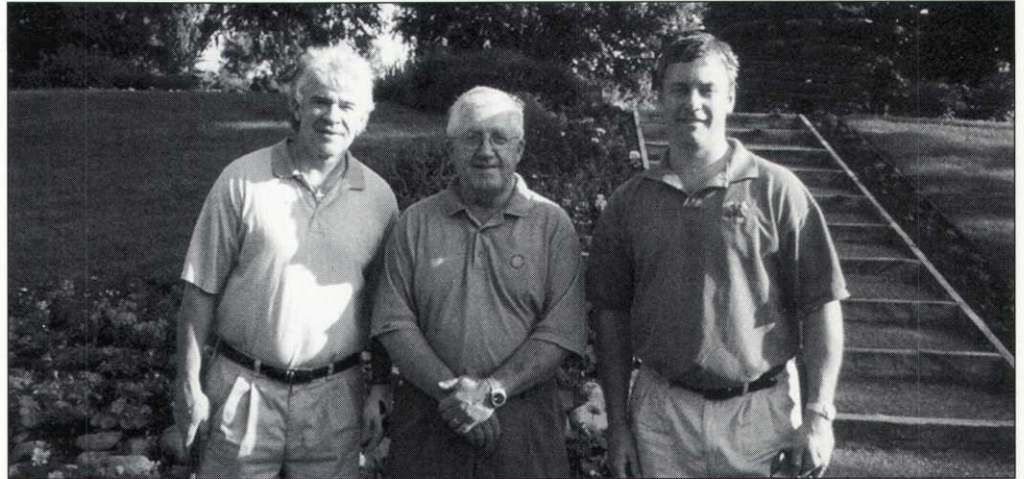
2909 EAST FRANKLIN AVENUE, MINNEAPOLIS, MINNESOTA 55406
 (612) 333-3487 ~ Fax (612) 333-5903 ~ 1-800-759-5343

MGCSA Turf Research Benefit Week Raises \$12,440

Twin Cities' Private Clubs Generously Donated Tee Times for Research

Keith Scott, CGCS, Oak Ridge Country Club (pictured in the center of the photo on the right), along with other Twin Cities' area Superintendents, made sure all participants in the 17th Annual MGCSA Turfgrass Research Benefit Week, held June 7-11, were treated first-class and enjoyed their experiences playing golf at a private country club.

This year's event raised \$12,440 for turfgrass research. The following clubs generously donated tee times: Dellwood Hills GC, Edina CC, Golden Valley CC, Hillcrest GC of St. Paul; Indian Hills GC, Interlachen CC, Midland Hills CC, Minneapolis GC, Minnesota Valley CC, North Oaks GC, Oak Ridge CC, Olympic Hills CC, Rolling Green CC, Stillwater CC, The Minikahda Club, Town & CC, Wayzata CC, Windsong Farm and Woodhill CC.



TWO FORMER PRO HOCKEY PLAYERS PLAY OAK RIDGE in the MGCSA's Turfgrass Research Benefit Week. Craig Norwich, left, an Edina East star and two-time All America at the University of Wisconsin and former teammate of NHL superstar Mark Messier in the World Hockey Association, along with Scott Schneider, right, a former Colorado College and Winnipeg Jets player, were thoroughly impressed with the hospitality Keith Scott, CGCS, (center) displayed while they played golf. Keith took lunch orders from all players participating in the event on the seventh hole and arranged for the sandwiches to be ready at the turn and also checked in with each group periodically to make sure everyone was happy. The hockey stars were thrilled to play the beautifully-conditioned course.

Turf's up! Ready to **GO!**

We're up and ready for another growing season. Proven turfseed mixtures and blends, top straight varieties, wildflower blends, fertilizer, erosion control products. And, "just right" prices and service. *Call today and watch us move.*

Celebrating our 10th Anniversary



TWIN CITY SEED COMPANY



7265 Washington Avenue South, Minneapolis, Minnesota 55439
1-800-545-TURF • 952-944-7105 • fx 952-944-7239
jgattly@twincityseed.com

Providing Full Service Golf Course Design

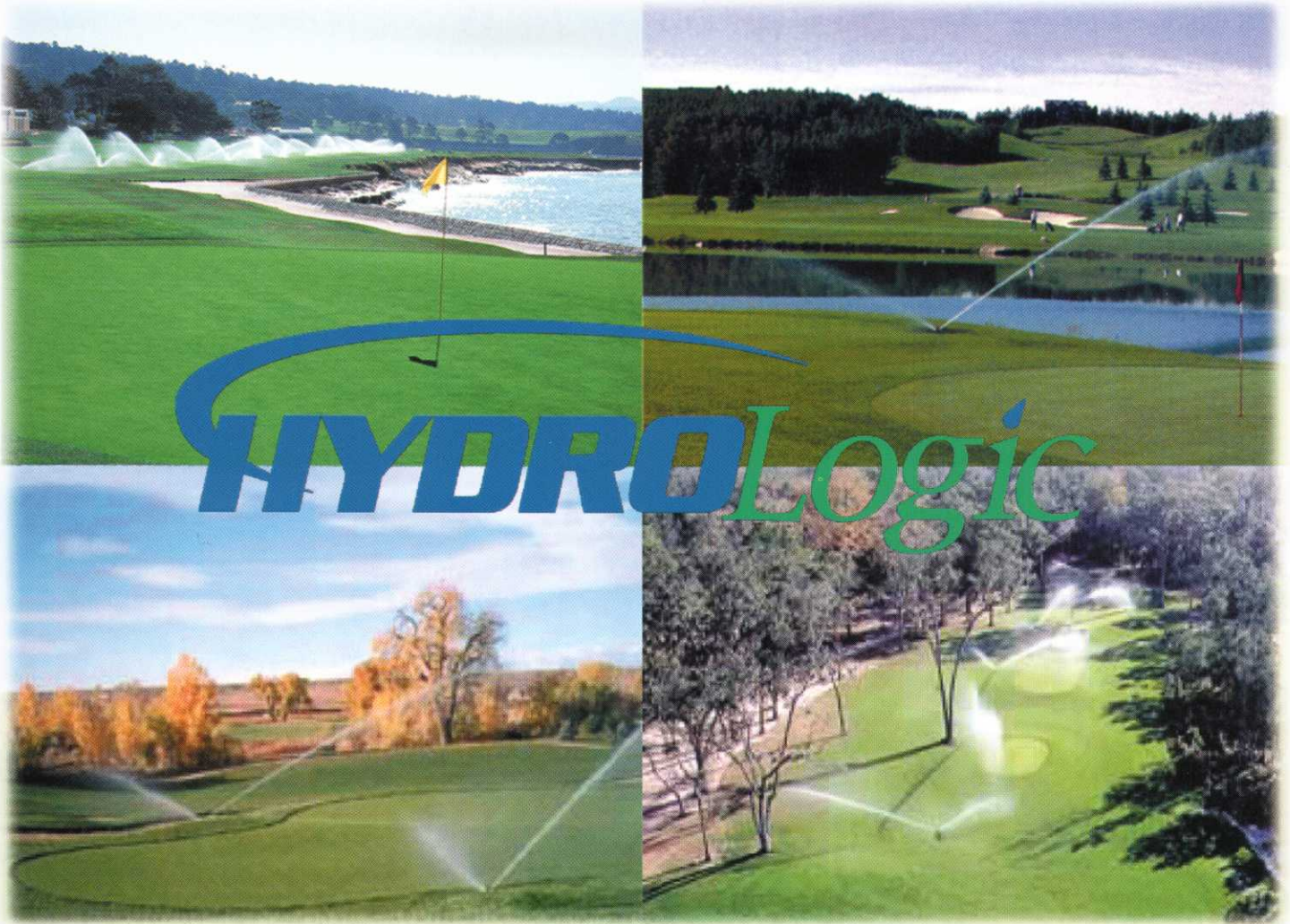


Bonestroo
Architects Of
The Game **Golf**

651-636-4600

www.bonestroogolf.com

a division of Bonestroo, Rosene, Anderlik and Assoc.



YOU KNOW HOW YOU WANT YOUR
COURSE TO LOOK.
WE KNOW HOW TO GET YOUR
COURSE THERE.

1-800-422-1487

RAIN  **BIRD**