

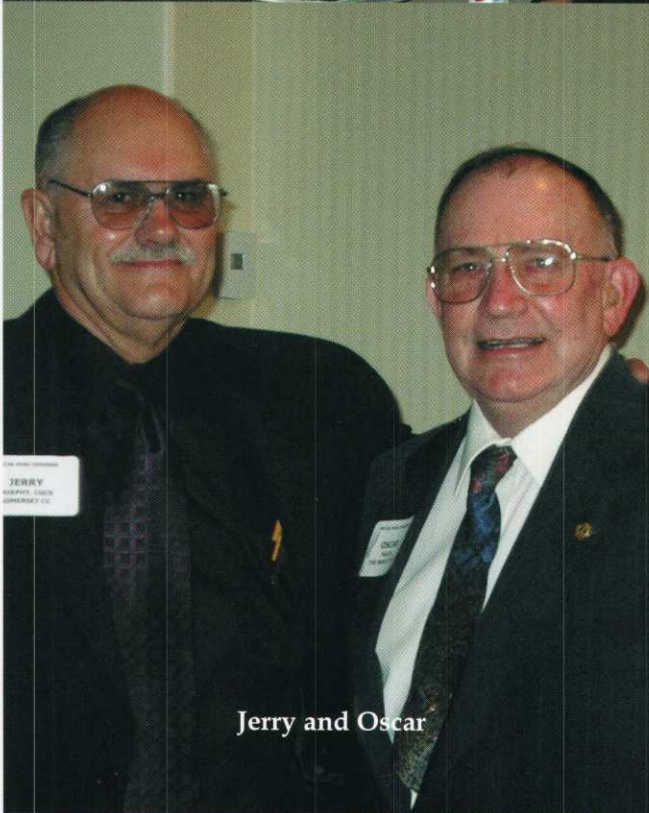


Oscar Miles

2004



1977



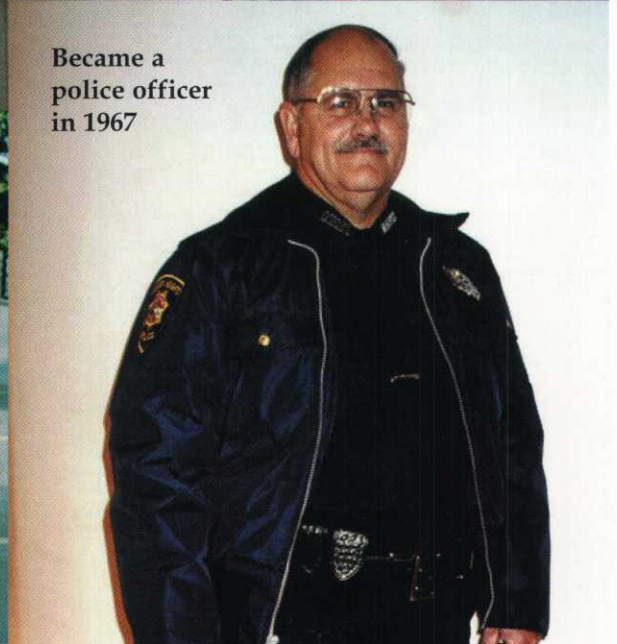
Jerry and Oscar



1998



1955 T-Bird



Became a police officer in 1967

Ash Trees —

(Continued from Page 8)

"Nobody in Michigan could identify what this insect was. The Smithsonian couldn't even identify it. Then it was sent to other scientists across the globe, and it was actually a Slovakian entomologist who was able to identify it as a beetle. Because the bug is kept in check in its native lands through tree resistance and natural predators, very little research has been done on it. Linsmeier-Wurfel said Michigan researchers could find less than two pages on it in Chinese literature.

Linsmeier-Wurfel said there are no firm plans yet on how and where to build the firebreak around the 2,500-square-mile core infested region near Detroit, though one federal official privately said it likely would have to be at least 3 miles wide.

State law allows Michigan to order the destruction of infested trees, and Linsmeier-Wurfel said most in Michigan

It's analogous to mad cow disease. If you find an infected cow, you destroy the whole herd.

— Therese Poland,
Research Entomologist, U.S. Forest Service

are resigned to the sacrifice they must make to keep the pest from spreading.

"Nobody likes to see the trees go, but for the most part there is support because there is an understanding that if something isn't done now, it will just get that much worse," she said.

Researchers are working on insecticides to combat the bug, and early data shows that some are effective at wiping out about 85% of a population. That isn't good enough to eradicate the beetle. But it may offer hope for some homeowners in

the core infested area around Detroit, where officials believe the tally of dead trees could soon reach 12 million.

It is already an ugly scene.

"It's like the old Dutch elm disease days, with rows and rows of dead ash in the urban areas," said Cummings-Carlson of the Wisconsin DNR.

Identification, Appearance and Symptoms

The emerald ash borer belongs to a group of insects known as metallic wood-boring beetles. Adults are dark metallic green in color, one-half inch in length and one-sixteenth inch wide and are present only from mid-May until late July. Larvae are creamy white in color and are found under the bark.

The borer's host range is limited to species of ash trees (identified by their distinctive leaves, which are located directly across from each other on the leaf stem and bark). In Michigan, most ash trees are white, black or green. Emerald ash borer does not attack mountain ash, which is not related to white, black or green ash trees.

Usually the borers' presence goes undetected until the trees show symptoms of infestation — typically the upper third of a tree will die back first, followed by the rest the next year. This is often followed by a large number of shoots or sprouts arising below the dead portions of the trunk.

The adult beetles typically make a D-shaped exit hole when they emerge. Tissue produced by the tree in response to larval feeding may also cause vertical splits to occur in the bark. Distinct S-shaped tunnels may also be apparent under the bark.

(Editor's Note: For more information, see www.emeraldashborer.info. This article was reprinted with permission from the Feb. 22, 2004 editions of the Milwaukee Journal Sentinel.)

What Are You Doing With Your Old Scrap Metal?

I want to encourage maintenance facilities to clean up. There is a real shortage of iron so the price of scrap metal is so high that you can actually make some pretty good money by selling metal for recycling.

We have come up with three truck loads of stuff, from old engine blocks to transmissions (well-drained) to old fencing to steel 55 gal.

"We have come up with three truck loads of stuff, from old engine blocks to transmissions (well-drained) to old fencing to steel 55 gal. drums to used bed knives and reels. At \$.15/lb. we get about \$100 for each load."

drums to used bed knives and reels. At \$.15/lb. we get about \$100 for each load. Not only are you getting rid of junk that should have been cleaned out long ago, but your getting paid to do so.

All the proceeds go back to the grounds crew as employee parties, donut, prizes for going above and beyond the call of duty, and pizza. Look in your yellow pages under recycling for a place near you.

Recent pricing includes:

Copper wire - insulated \$.50/lb., non-insulated \$1.05/lb.; brass \$.50/lb.; aluminum \$.50/lb.; stainless steel \$.50/lb., and copper tubing \$1.00/lb.

— Eric Peters, North Links Golf Course

Duininck Bros. Inc.

GOLF

New Construction • Renovation
Restoration • Laser Leveling Tees
Drainage • Green Construction

800-328-8949
www.dbigolf.com
P.O. Box 208, Prinsburg, MN 56281



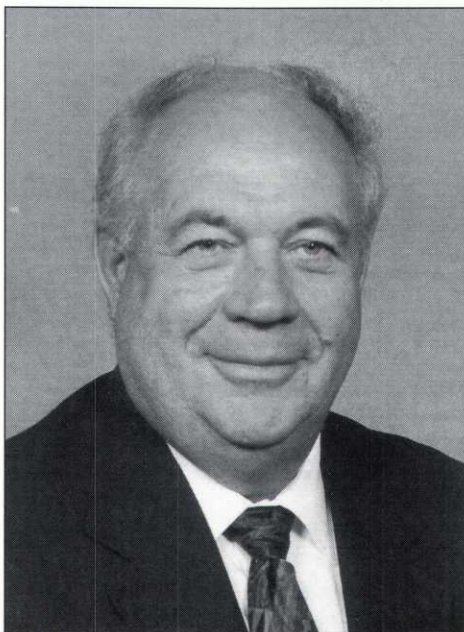
Local Business Leader Glenn Rehbein Dies in Accident

Business he created had major impact on Twin Cities' golf courses, sports fields, and development projects

Twin Cities entrepreneur and business leader Glenn Rehbein died on February 26th of injuries from an accident. Rehbein was riding an all-terrain vehicle with a group of people in a desert area outside of Phoenix, Arizona. He was 65 years old.

Glenn started a business in his hometown of Lino Lakes in 1956 with a small loan from his uncle that he used to purchase equipment and enter the sod business. Today, Glenn Rehbein Companies are a multi-million dollar environmental services firm that provides brownfield revitalization (the clean up of polluted industrial sites), excavation, land development, civil engineering, surveying, and specialty turf construction to Midwestern and national clients.

"We are incredibly saddened by this loss," said Bart Rehbein, Glenn's son and the president of Glenn Rehbein Companies. "As a father and as a business leader, he was someone who led by



Glenn Rehbein

example. He believed in hard work and always doing the best job possible. If he gave you his word, that was all that mattered. Glenn was an incredibly caring person who never lost sight of what was important in life." Glenn is survived by his wife Myrna and four children, Robyn, Bart, Dirk and Mark.

"Glenn Rehbein leaves behind shoes that cannot be filled," said Tom Lehman, PGA golfer and the designer of the Troy Burne Golf Club, which was developed and is currently owned and operated by Glenn Rehbein Companies. "In many ways he was larger than life. I admired and respected him very much and always will. He had strength of character, a tender heart, a courageous spirit, and a wonderful sense of humor. To me, he was a loyal friend, supporting all that I did in many, many, ways. I will miss him."

(Continued on Page 14)

The Aerating Fountain

from Otterbine




AT MTI DISTRIBUTING, we know that water quality is equally as important as aesthetics. That's why we offer Otterbine Aerating Fountains to manage your ponds and lakes, as they have been independently tested and proven to create excellent circulation and oxygen transfer. Effective circulation is key in reducing algae and the beauty of an Otterbine spray pattern speaks for itself!

Highlighted features include:

- Unique Mixed-Flow Pumping System
- Eight Interchangeable Spray Patterns
- 5-Year All Inclusive Warranty
- Decorative Float Covers



Brooklyn Center, MN
763-592-5600
800-362-3665
www.mtidistributing.com



MGCSA Legacy Scholarships and Joseph S. Garske Scholarships are now available.

Call the MGCSA office
at 952-473-0557
or 1-800-MGCSA-27,
e-mail scott@mgcsa.org
or visit www.mgcsa.org

Glenn Rehbein—

(Continued from Page 13)

An impact on the Twin Cities and beyond Glenn Rehbein and his many businesses have played important roles in a number of major projects throughout the Twin Cities. Glenn Rehbein Companies are experts in environmental remediation, site development, and other work needed for major construction projects. They have played key roles in the Medtronic Corporate Campus, Block E in downtown Minneapolis, Saint Paul's Upper Landing, the Minneapolis Federal Reserve Bank, the Troy Burne Golf Club in Hudson, WI.

His most recent endeavor in the golf course industry is Windsong Farm Golf Club in Independence, which will open this year and is envisioned to be one of the finest private clubs in America.

Glenn Rehbein Companies also worked on a number of projects at the University of Minnesota, including the Civil

Engineering Building, a major addition to the university's hospital, and the Walter Library. They are also preparing the site for the new Guthrie Theatre in Minneapolis.

"Glenn was a giant in the construction industry and will be sorely missed," said Tom McGough Sr., CEO of McGough

"Glenn was clearly one of our great business leaders ... he was a terrific person and someone who was extremely civic minded."

Companies. "His word was his bond. We have been fortunate to work with Glenn and his business for decades on a number of projects across the Twin Cities. He was a person who delivered what he promised and was a straight shooter. This is a great loss."

Glenn Rehbein Companies were also a national leader in sports facilities and golf

course development. They developed a portable natural turf system for the Reliant Stadium in Houston, TX, which recently hosted the Super Bowl. Across the country, thousands of amateur athletes have played on sites built in part by Glenn Rehbein Companies.

Glenn believed in giving back to the community and was a strong supporter of the Urban Ventures Leadership Foundation, Sharing and Caring Hands, Children's Cancer Research Fund, and the National Sports Center in Blaine. He also supported a number of local churches and was a member of Rice Creek Covenant Church in Lino Lakes.

"Glenn was clearly one of our great business leaders," said Paul Erickson, Executive Director of the Minnesota Amateur Sports Commission. "I had the pleasure of working with him for more than 20 years and saw how involved he was in the community. He was a terrific person and someone who was extremely civic minded. He will be missed by many."

**CARRIES JUST ABOUT
EVERYTHING
BUT A BIG PRICE TAG.**

Kawasaki UTILITY VEHICLES

- Liquid-cooled, V-Twin engine
- Air intake system overhead
- 1,330 lb. load capacity
- Rack & pinion steering
- Sound-insulated and extra-quiet muffler
- Governed to 16 mph safety
- Lock-out differential for min. ground disturbance
- Full line of accessories available



KAWASAKI 3020 MULE™

Call Tim Commers or
Steve Scanlan today...
(612) 333-3487 or
Toll Free 1 (800) 759-5343

CUSHMAN MOTOR CO., INC.

2909 EAST FRANKLIN AVENUE, MINNEAPOLIS, MINNESOTA 55406
(612) 333-3487 • Fax (612) 333-5903 • Toll Free 1-800-759-5343

Golf in Afghanistan? Reservist Hopes So

By Bruce Strand
Daily News Sports Editor

When Army Reserve chaplain Scott Hagen was activated for duty in Afghanistan, he came up with an idea to help the troops' morale: set up a little golf course for them. "Our staff was laughing that there are no golf courses in Afghanistan," said the Faribault pastor who is also an avid golfer. Then it occurred to them: "We said, 'We are an engineer battalion, and we can do it ourselves.'"

Hagen is a member of Faribault Golf and Country Club, but is also a friend of The Legacy superintendent Kevin Schmidt. Hagen talked it over with Schmidt and Legacy club pro Greg Paine.

"I never expected them to give me so

much stuff, but I have it all packed and we will take it all and use it," said Hagen.

The Legacy provided Hagen with a

"We think it would be a moral booster to have some recreation like this. We hope to maybe have a couple short holes and a driving range."

package of five pins and cups, a cup cutter, a gross of range balls and a bunch of used clubs, said Paine. In a few weeks, the equipment will be used to provide soldiers with a little bit of home.

A first lieutenant who's been in the

Reserves since March 2002, Hagen is part of the 367 Engineer Battalion, based in St. Cloud, that was mobilized on Feb. 11. In Faribault, he is pastor at Our Saviour's Lutheran Church.

His unit is currently stationed at Fort McCoy, Wisconsin, preparing for departure.

"Once we get to Afghanistan," he said, "we will survey the area and see what is safe and feasible."

"We think it would be a moral booster to have some recreation like this, and also for our equipment operators to get some additional work and practice with their machines. We hope to maybe have a couple short holes and a driving range."

HEDBERG
LANDSCAPE SUPPLIES
"Built on Service"

THE MIDWEST'S LARGEST SELECTION OF LANDSCAPE HARDGOODS

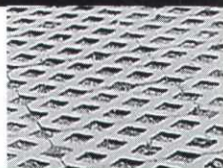
Featuring Concrete Products By:

INTERLOCK
CONCRETE PRODUCTS INC.

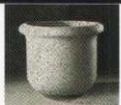
LANDSCAPE HARDGOODS

With the Midwest's largest selection of landscape hardgoods, Hedberg Landscape Supplies can help you with any project.

Erosion control Turfstone is a great option that allows grass to grow while reinforcing soft ground areas that are subject to traffic.



SITE FURNISHINGS



Planters



Benches



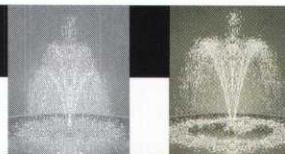
Tables



Containers

POND SUPPLIES & FOUNTAINS

We offer a complete line of pond kits, pond maintenance products, and fountains.



Plymouth

1205 Nathan Lane North
Phone: 763-545-4400

Farmington

4375 170th Street West
Phone: 651-423-5048

Stillwater

8400 60th Street North
Phone: 651-748-3158

www.hedbergaggregates.com

Tiziani Golf Car To Help Sponsor Scholarship Scramble At White Bear Yacht Club

Tiziani Golf Car has agreed to help sponsor this year's Scholarship Scramble at White Bear Yacht Club on Monday, June 7, 2004. This important MGCSA event helps raise funds for the scholarship program. John Steiner, CGCS, will host the event.

Tiziana Golf Car will make up to twenty rental golf cars available for purposes of the golf event at no charge for rental or transportation.

TGC will also sponsor a par 3 hole during the event in which the person who wins the event will be awarded the use of a Club Car turf utility vehicle for the rest of the year at no charge.

"As our relationships have grown with many within the MGCSA, help sponsoring this event will present an opportunity to express our appreciation to our friends within the organization and will add to the success of the event for such a worthy cause," said Andrew Hochmuth of Tiziana Golf Car.

Registration forms for the Scholarship Scramble will be mailed in early May. The field will be limited to 36 teams and will fill up quickly.



Bayer Environmental Science



We Take Protecting Your Turf Very Seriously.

And Why Shouldn't We? It's Your Investment.



When it comes to your turf – want to treat it as though it is our own. We want to maintain your investment with the industry's leading products from Bayer Environmental Science.

So next time don't call the other guys, call us, because we do care – a lot.

Turf Supply Company - We Take Your Turf Very Seriously.
Contact your "Turf Expert" at **651-454-3106**.



2797 EAGANDALE BLVD • EAGAN, MINNESOTA 55121 • 651-454-3106 • 1-800-551-4857

Champions Tour Players Rank TPC of the Twin Cities As Top Course in 2003

The Tournament Players Club of the Twin Cities was recently ranked as the top course overall on the Champions Tour by the Champions Tour players themselves. In only its third season hosting the 3M Championship, the TPC of the Twin Cities was ranked higher than any of the other 28 courses that hosted Champions Tour events in 2003.

The TOUR players evaluated all 28 courses on overall playability and conditioning with emphasis in the following areas: putting greens, teeing grounds, fairways, roughs, bunkers and practice facility.

The TPC of the Twin Cities received a score average of 3.54 on a 4.0 scale. The average score for all 28 clubs hosting Champions Tour events was 3.12.

Some of the comments from the Champions Tour players who participated in the 2003 3M Championship at the TPC of the Twin Cities included:

"I really like this golf course...it's probably my favorite on the Champions Tour." - Bruce Lietzke

"The golf course is probably in the best

"I really like this golf course...it's probably my favorite on the Champions Tour." - Bruce Lietzke

condition it's ever been in." - Tom Kite.

"The golf course is in perfect condition." - Jim Thorpe

"We are obviously very proud to receive such a favorable ranking, especially considering all the other fine golf facilities around the country that host



Champions Tour events," said General Manager and Director of Golf, Alan Cull. "Golf Course Superintendent, Paul Grogan, and his staff take tremendous pride in our course conditions and are to be commended for an outstanding job."

About the Tournament Players Club of the Twin Cities

The Tournament Players Club of the Twin Cities opened on June 28, 2000, as the 19th Club in the prestigious TPC Network. Created by a signature design team featuring golf legend Arnold Palmer with assistance from PGA TOUR player consultant Tom Lehman, the TPC of the Twin Cities provides the type of first class golfing experience expected from Minnesota's only PGA TOUR facility.

Out of a peaceful sod farm, Palmer and Lehman sculpted a championship golf course that features rolling fairways, natural prairie grasses and 27 bodies of open water throughout the par 72 layout. Tee, fairways and greens are meticulously manicured with the finest bentgrass. The course provides a masterful blend of challenge and playability for the enjoyment of

all skill levels, professionals and amateurs alike.

The TPC of the Twin Cities is also the home of the Champions Tour's 3M Championship, one of the most popular and successful events on the circuit.

The PGA TOUR's Tournament Players Club (TPC) Network represents a commitment to service and excellence unsurpassed in the golf industry.

Overseen by TOUR subsidiary PGA TOUR Golf Course Properties, Inc., the Tournament Players Club Network continues to expand, with more than 30 facilities open or in the development stage, including licensed courses and licensed international facilities.

Throughout its history, the TPC Network has maintained the high standards that set it apart from other golf facilities. Whether private, daily fee or resort, each Tournament Players Club embodies the traits that have been a trademark since the TPC at Sawgrass first opened its world-renowned Stadium Course in the fall of 1980. (Editor's Note: For more information on the TPC Network, visit tpc.com.)

INSIGHT

One Superintendent's Perspective

(Editor's Note: The following interview of Shawn Swenson, Superintendent at Madelia Golf Course, was conducted by Jack MacKenzie, CGCS. This is the third in a series of State Superintendent interviews.)

Course and Statistics Madelia Golf Course

City-owned nine-hole track. From the tips Madelia plays 3,192 yards. Opened for play in 1981. Madelia is a young course still growing. The old days of "grip it and rip it" are fading fast as the trees are making the errant shots more difficult to recover from.

Location

Madelia Golf Course is located in the southwest part of the community approximately 25 miles southwest of Mankato.

Years in the business and vocational biography

I started working at the Madelia Golf Course in 1993 at the age of 16. Worked my way up through the ranks. Attended Anoka-Hennepin Tech College. I was offered the position of Assistant Superintendent in 1997. In 1998 I became the Superintendent when Harold Davis, the first Superintendent retired.

Why and/or how did you enter the Turf Management industry?

I love the game of golf and being outdoors. I thought this would be a great opportunity to be involved with the industry and closer to the game. Needless to say, my handicap has steadily increased over the years, due to more work and less play.

Who was your professional mentor and why?

Without a doubt, Harold Davis. This man took me under his wing and showed me all about golf courses, hard work, ups and downs of being in this position. In 1993 the course flooded, we worked long hard hours rebuilding greens and fairways. He always kept his head high in all the tough times. That prepared me for the floods of 1997 and 2001.

What has been the highest point in your career?

The day I became the Superintendent of Madelia.

What has been your lowest point?

The next day when it flooded!

Are your greatest challenges political, agronomic or managerial?

Political. I have three boards to work with: Park Board, Golf Board, and finally the City Council. The golf course has had a debt since day one. When built, people thought Harold could mow greens with a 22 inch rotary, mow fairways and roughs with the same six-foot PTO driven woods mower. They soon realized how expensive equipment in this industry is. You get a couple of people on the City Council who think they have the answer to everything without knowing the whole statistics or facts and make your life miserable.

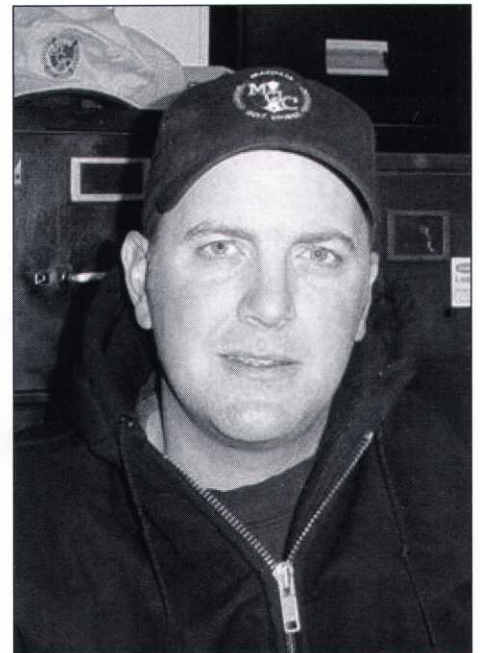
What is the most difficult disease to manage on your course and how do you?

*I pay my employees well.
When I was 16 working here
I made minimum wage and
got a ten cent raise every year.
A lot of hard work for low
pay. I don't want my
employees to go through that.
My employees deserve just
as much credit if not more for
the great shape of the course.*

I really don't have a single disease difficult to manage, I run into Dollar Spot and Brown Patch once in a while. Chipco 26gt does wonders!

Is it hard to find good help in your area of the state?

Not really, I pay my employees well. When I was 16 working here I made minimum wage and got a ten cent raise every year. A lot of hard work for low pay. I don't want my employees to go through that. My employees deserve just as much credit if not more for the great shape of the course. I have had two employees go on to college for Golf Course Management. I try to get young employ-



Shawn Swenson

ees that can work 4-5 years for me.

Do you have a dog on your crew?

No, not yet!

Where will our industry be in ten years?

Tough to say. Hopefully equipment will get cheaper, wishful thinking!

Where would you like to be in ten years?

I hope still in this industry, I love the challenge of my job and the rewards of a job well done.

What is your perspective of our state association and what would you change?

I feel its heading down the right path. We have a strong association that provides a helping hand to the "ditch diggers" of this industry.

Name your foursome, who would you play with and why?

Tiger Woods, I feel he has pushed golf to the next level, it's now "cool" to be on the golf team. The Bear, I would like to pick his brain about golf course design. Bill Murray, we all need laughter and I would like to beat at least one person in the foursome!

People vs. The Pro's Event Set For North Oaks on May 24

Exclusive Opportunity

The Minnesota Golf Course Superintendents' Association is in an elite group of 10 chapters throughout the United States to participate in the People vs. The Pro's event.

By participating in the People vs. The Pro's tournament meeting on May 24th at North Oaks Golf Club, superintendents will have the opportunity to qualify to play against either Jack Nicklaus or Sergio Garcia and possibly win \$100,000. BASF Turf and Ornamental will sponsor the event. Your entry fee, all fundraising proceeds for the day and a donation from BASF will go toward the MGCSA and TROE Center.

What Is It?

With the help of The Minnesota Golf Course Superintendents' Association, North Oaks Golf Club and BASF Turf and Ornamental we present the People vs. The Pro's. The People vs. The Pro's is a unique

national golf competition that will ultimately allow two amateurs to go head-to-head with a famous pro on national television for a chance to win \$100,000.

Where Is it?

The Tournament is slated to be held at Pinehurst No. 2. Rated one of the top 10 courses in the world and is the site for the 2005 U.S. Open Championships. ** Tournament course and professionals subject to change. **

How Does It Work?

When Is The Tournament?

During early September, 140 amateur golfers under the age of 50 and 140 amateur golfers 50 and over will play in a three-day, stroke-play competition that will yield one amateur champion in both Regular Division and Senior Division. On the fourth day the two qualifiers will play an 18-hole match against the professionals with \$100,000 going to the winner and \$50,000 to the loser of each division.

The final tournament will be broadcast on ESPN II in September 2004.

How Do You Fit In?

One Superintendent (it could be you) from the May 24th meeting at North Oaks Golf Club will win a trip for two which includes airfare, 5 days / 4 nights lodging and a rental car to The People vs. The Pro's tournament. You will play in a three day stroke play qualifying tournament, with the winner going on to play in a 18 hole stroke play round with the Pro and a chance to win \$100,000. BASF Turf and Ornamental will also provide a BASF golf bag, apparel and golf balls for use in the tournament. Invitations for this event will be mailed soon!

Where and When?

May 24, 2004 at North Oaks Golf Club, 54 East Oaks Rd., St. Paul, MN 55127.
Host: Jack MacKenzie, CGCS

LEITNER COMPANY

Specializing in Soils for Golf Course Maintenance & Construction

Soil mixing and processing specialists.

Supplying the Golf Course Industry with soil and sand products for over 60 years.

Material to specification for topdressing and construction.

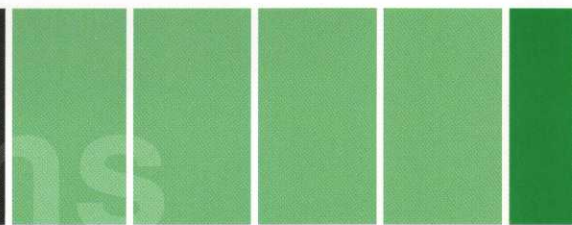
Quality - Reliability - Experience

MIKE LEITNER
LEITNER COMPANY
945 Randolph Avenue ~ St. Paul, Minnesota 55102
(651) 291-2655

PROUD SUPPORTER OF RESEARCH AND EDUCATION THROUGH THE MGCSA



Great
Solutions



MTI

Distributing

is

committed

to your

success!



"MTI Distributing is proud to represent these local manufacturers. We will provide the support you have come to count on for all of the products we carry. Please contact your MTI salesperson for your equipment needs."