

Photo taken at Tobacco Road G.C., Sanford, NC



**WHEN YOU'RE RESPONSIBLE FOR THE MOST IMPORTANT ASSET ON THE COURSE,
YOU NEED A PARTNER YOU CAN COUNT ON.**



For every job on your course, there's a John Deere made especially for it. A full-line of quality equipment, born out of the suggestions and critiques of thousands of superintendents and technicians. From quality mowers and tractors to aerators and utility vehicles. But it doesn't end there. We supply you with the industry's best operator manuals, tech literature, and support hotline. We deliver quality parts 365 days a year, with a 99.5% fill-rate overnight. And we offer the JDC™ MasterLease, the most cost-effective way to acquire golf and turf equipment. To see how John Deere can make a difference on your course, call your local John Deere distributor.



www.JohnDeere.com



GREENIMAGE

12040 POINT DOUGLAS DR. S., HASTINGS, MN 55033
CALL US TODAY! 800-950-4180



JOHN DEERE

NOTHING RUNS LIKE A DEERE®

HOLE NOTES

Official Publication
of the MGCSA

Editor
Jack MacKenzie, CGCS
jmackenzie426@msn.com

MGCSA Board of Directors

OFFICERS

PRESIDENT

Rick Fredericksen, CGCS
Woodhill Country Club
Wayzata, MN 55391
952/473-5811 Fax: 952/473-0113

VICE PRESIDENT

Robert Panuska
Waseca Lakeside Club
Waseca, MN 56093
507/837-5996 Fax: 507/835-3472

SECRETARY

Richard Traver, Jr., CGCS
Monticello Country Club
Monticello, MN 55362
763/295-3323 Fax: 763/271-0124

TREASURER

Michael Brual
Faribault Golf & Country Club
Faribault, MN 55021
507/334-8101 Fax: 507/334-9653

EX-OFFICIO

E. Paul Eckholm, CGCS
Heritage Links Golf Club
Lakeville, MN 55044
952/440-6494 Fax: 952/440-4655

DIRECTORS

Jon Almquist

MTI Distributing, Inc.
Brooklyn Center, MN 55429
763/592-5721 Fax: 763/592-5700

James Bade

Somerset Country Club
Mendota Heights, MN 55118
651/457-1161 Fax: 651/455-2282

Joe Churchill

Simplot Partners
Roseville, MN 55113
888/828-5354 Fax: 651/633-6779

Greg Hubbard, CGCS

Manitou Ridge Golf Course
White Bear Lake, MN 55110
651/777-1436 ext. 5 Fax: 651/777-7198

Mike Kelly

Edina Country Club
Edina, MN 55424
952/922-9012 Fax: 952/922-3206

Jack MacKenzie, CGCS

North Oaks Golf Club
St. Paul, MN 55127
651/484-1024 Fax: 651/484-5411

Mike Nelson

Dacotah Ridge Golf Club
Morton, MN 56270
507/644-7844 Fax: 507/644-7053

Barry Provo

Deer Run Golf Club
Victoria, MN 55386
952/443-3358 Fax: 952/443-3358

Brad Zimmerman

Boulder Point Golf Course
Elko, MN 55020
952/461-4909 Fax: 952/461-4910

BUSINESS OFFICE

AND HOLE NOTES OFFICE

EXECUTIVE DIRECTOR

Scott Turtinen

11900 Wayzata Blvd., Suite 130
Minnetonka, MN 55305
952/473-0557 Fax: 952/546-1652
Toll Free: 1-800-642-7227
E-mail: scott@mgcsa.org

www.mgcsa.org

MGCSA Championship Set For August 18 at Cragun's



With the eventual passage of time, I have noticed fifty creeping over the horizon and forty fading in the dusk. At the last MGCSA Board meeting I looked around the table at the varying ages of people and noticed myself having more "life experience." It is interesting to note how our association has evolved in the last twenty-five years, but at the same time the level of commitment and intensity our board exhibits hasn't changed.

As a Board, we meet ten to eleven times a year to go over association business. Scott Turtinen, our Executive Director, handles all the day-to-day dealings, allowing the Board members to handle their committee assignments without interfering with their work or family. This doesn't mean that board meetings are short or without discussion. I have been everything from a fly on the wall (as a first time on the Board) to the center of lengthy debates on how best to improve our association for our members. As President, I have helped coach and guide a group of members as devoted to our membership as any before or possibly to come.

With five months remaining of my term as President, I would like to encourage our membership to become involved in the future of this organization. Join a committee that you have an interest in or toss your hat in the ring and get elected to the Board. An elected term runs for two years and during this time you will meet some individuals that share a common interest with you. Contact one of the board members or call Paul Eckholm if you are interested. I am confident you will enjoy participating.

* * * * *

Mike Nelson, Superintendent at Dakota Ridge, hosted our annual President's Outing for the board this year. With ten Board members and three spouses participating in a two best ball event, all participants had a great time. The winning team of Jon Almquist, Scott Turtinen, Jack MacKenzie and Mike Nelson took home bragging rights for the coming year. First place prize was a dozen golf balls for each member of the winning team, provided by Phil Reith, the Pro at Woodhill. Last place earned a single ball.

* * * * *

August 18th is our Championship at the Legacy Courses at Craguns. Matt McKinnon, Superintendent, is looking forward to hosting this great event. Steve Busch, our defending champion will be there to defend his title.

*Your President,
Rick Fredericksen, CGCS*

HOLE NOTES (ISSN 108-27994) is published monthly except bi-monthly December/January, February/March for \$2 an issue or \$20 per year by the Minnesota Golf Course Superintendents' Association, 11900 Wayzata Blvd., Suite 130, Minnetonka, MN 55305. Scott Turtinen, publisher. Periodicals postage paid at Wayzata, MN. POSTMASTER: Send address changes to HOLE NOTES, P.O. BOX 617, WAYZATA, MN 55391.



Inside This Issue of Hole Notes

- 1** **Christmas in August** - Troy Carson and Brian Horgan
- 3** **President's Column** - Rick Fredericksen, CGCS
- 11** **Creeping Bentgrass** - Dr. Gail Schumann, R. Anair, Jr., and J.S. Ebdon
- 17** **2002-03 Umass Snow Mold Fungicide Trial Results And Real World Results from Superintendents**
-- Dr. Gail Schumann
- 25** **MGCSA Announces Garske and Legacy Award Recipients**
- 26** **Where the Water Runs North** -- Justin R. Gustafson
- 29** **MGCSA Membership Report** - Mike Nelson
- 30** **It's In The Hole**
- 33** **Green and Whites and Extended "Js"** - Jack MacKenzie, CGCS
- 34** **GCSAA Class A Point Chart**
- 36** **2003 Turf and Grounds Field Day** -- Brian Horgan
- 38** **In Bounds** - Jack MacKenzie, Jr., CGCS



JEFFREY HARTMAN, PRESIDENT
 . RENOVATION . SITE DEVELOPMENT . LANDSCAPING
 . HIGH TECH DRAINAGE TECHNIQUES . DESIGN
 . EXCAVATING . GRADING

952/443-2958
 FAX 952/443-3452

GOLF DIVISION

8011 BAVARIA ROAD
 VICTORIA, MN 55386

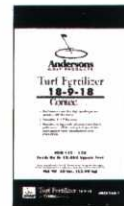
ADVERTISERS

Andersons Golf	4
BASF Corporation	14
BASF Corporation	15
Bayer Environmental Science	35
Bonestroo	19
Classified Ads	6
Country Club Turf	13
Cushman Motor Co., Inc.....	16
Double Eagle Golf Construction	25
E.H. Renner & Sons, Inc.	5
FMX	31
Gill Miller, Inc.....	38
Glenn Rehbein	23
GreenImage.....	IFC
Hartman Excavating, Inc.....	4
Hassan Sand & Gravel	7
Hedberg Aggregate	17
Herfort-Norby.....	25
Hydrologic.....	BC
Leitner Company	22
MTI Distributing Co.....	7
MTI Distributing Co.....	20
MTI Distributing Co.....	21
Par Aide Products Co.....	33
Plaisted Companies Inc.....	27
Precision Turf & Chemical	10
Premier Irrigation	24
Princso	30
Reinders	19
Simplot Partners	11
Sun Turf	32
Sun Turf	39
Turf Supply Company.....	28
Twin City Seed	29

*New from
The Andersons...*



Andersons™
GOLF PRODUCTS



Contact for more information:

Mike Redmond
 Territory Manager
 11607 Seepaniak Dr.
 Little Falls, MN 56345
 (320) 632-6108
 FAX: (320) 632-6120
 CELL: (612) 963-0752

Professional Turf Products Division

Christmas in August –

(Continued from Front Cover)

A larger number of covers were tested on small plots over the previous couple of years by Dr. Jon Powell. Based upon his data, three covers that had performed well were chosen plus a new product to test over an entire green or as large plots (25 by 50 ft).

Materials and Methods

The current study was conducted on push-up greens comprised of a mixture of creeping bentgrass and annual bluegrass at Rolling Green CC (RG) and on a newly established USGA green seeded to L-93 creeping bentgrass at the TROE Center on the St. Paul Campus (campus). This was the first year of a two year study. The data presented should be considered preliminary until a second year of data is compiled.

The treatments included in the research project were:

1. Uncovered control
2. Basic green/brown tarp purchased from Menards; laid green side up
3. GreenJacket which is a non-permeable cross-laminated high-density polyethylene with reinforcing tabs
4. Crane Creek which is a two layer system with straw placed between the layers. The lower layer is a polyester mesh that is staked to the ground and the upper layer is a non-permeable polyethylene cover that is laced to the lower mesh layer. The lacing attachment process is supposed to allow maximum air exchange. This treatment used 6-8 bales per 1000 ft² evenly spread between the layers
5. American Excelsior which is a four foot wide roll of wood fiber inside netting. (only included on the newly established USGA green on campus).

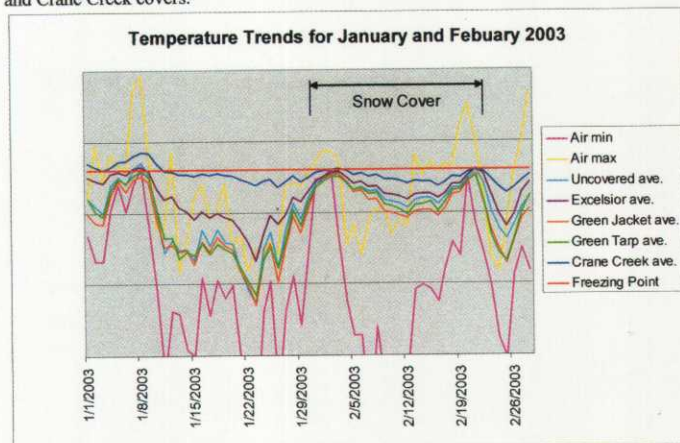
The covers were installed November 7, 2002 on the newly established green on campus and November 13, 2002 on the greens at RG. Temperature sensors/recorders were placed on the green surface, in the green near the crown of the turfgrass plant, and at a 2" soil depth before the covers were installed.

Covers were removed March 18, 2003 on campus and March 26, 2003 at RG. The plots were rated for turf quality (TQ), color, and percent injury (PI) the day of cover removal and then weekly until all treatments had ratings that were not statistically different. All treatments were replicated three times at each location.

Results

Some of the results were quite interesting. This past winter was an unusual year having little or no snow cover for the majority of

Figure 1. Temperature trends for January and February 2003 on the USGA green on campus. Notice how snow cover dampens the temperature fluctuations as compared to periods without snow cover and the greater insulating affect of the American Excelsior and Crane Creek covers.



the winter. As we examined the temperature data that was collected, we noticed that the temperatures under most of the covers fluctuated greatly along with the air temperature. A portion of the graph in Figure 1 shows the insulating affect that snow cover can provide by dampening the extremes in temperature. Only two inches of snow was required to have a dramatic affect on temperatures under the snow.

There was also a noticeable insulating affect from the American Excelsior covers as well as a major affect with the Crane Creek cover because of the straw (Figure 1).

When the covers were removed, all covered plots had significantly better TQ and color than the uncovered plots at both locations.

The campus ratings for the Crane Creek cover suffered because of excessive etiolation and some patch-like areas that had incurred some injury (because of the etiolation that occurred it may be better to use less straw than we used, although this has not been tested). After two weeks the etiolated turf had turned green and the plots had the top color ratings along with American Excelsior. The patches, on-the-other-hand took four weeks to heal and kept the TQ ratings suppressed because of it. The story was different at RG where there was only a little etiolation on some of the collars surrounding the putting green. These greens had good color and TQ (though color was not statistically different from others on some dates).

(Continued on Page 7)

E. H. Renner & Sons, Inc.
Well Drilling for Five Generations

Did you know we rent Air Compressors?

Call Jerry to Schedule.
Phone (763) 427-6100 Fax (763) 427-0533
Toll Free 1-800-409-9355

CLASSIFIED ADS

FOR SALE

1974 Toro Parkmaster 7-gang/9-gang rough mower w/spartan reels. Needs power steering unit, and some work on the reels. Many extra parts. Very repairable or excellent for parts. Will consider any and all offers.
Contact: Jim Barnett, Superintendent, Babbitt Golf Course, Babbitt, Minn. at home after 3 PM at 218-365-6946.

FOR SALE

Irrigation System
Woodhill Country Club will be replacing the present irrigation system. We have a Normally Open Hydraulic system which is fully functional. There are 38 Vari-Time Controllers, approx. 350 - 696 two speed sprinklers, approx. 400 - 630, 640, and 670 sprinkler heads. Also included are numerous parts.
Contact: Rick Fredericksen
952-473-5811 or 612-290-5810
r_fredericksen@msn.com

FOR SALE

12 Toro LTC Satellites.
All in working condition.
2 extra boards that go with them.
Contact: Terry Negen
The Crossings GC
Montevideo
320-269-6828
crossings@montegolf.com

FOR SALE

2000 Gandy Sweepmaster Greens Brush with electric lift - like new. \$500 or best offer.

Contact: TOM or MICK
Albany Golf Club
320-845-4306 or 320-293-1698

Wanted

Toro VT-4 Irrigation Clocks
Contact: Bob McKinney
Mendakota Country Club
651-454-1441

For Sale

Toro VT-II Central controller \$500
Toro Network LTC Satellites 16 Stations 7-(\$1000 each) Toro VT-4 Satellites (7 complete + 4 extra clock faces, many extra parts) \$200 each 75 HP centrifugal pump with VFD (480 volt 3-phase) \$6,500 10 HP centrifugal pump (480 volt 3-phase) \$500 7.5 HP floating river pump (480 volt 3-phase) \$500 Misc. cast iron pipe fittings for old pumphouse and pumps (free)
Contact: John Granholt
Eau Claire Country Club
1-715-836-8422

For Sale

Par Aide Satellite tee markers. 81 sets - Tee markers have been sanded and are ready for paint. Unpainted \$500 - Painted to your color \$725, plus the cost of paint. Storage stands included.
Accuform Bunker Rakes, 275 rakes @ \$8 ea or \$2,000 for all.
Contact: JEFF JOHNSON
The Minikahda Club
612-926-4167

FOR SALE

Broyhill "Greenskeeper" Power Broom
Whittek Range Ball Washer.
Best Offer.
Contact: SALLY BERENS
Benson Golf Club
320-843-2109

WANTED

Rollers to fit a Greensking IV
Contact: RICK DOUNER
218-299-5365

FOR SALE

Toro Spray Hawk, 45 regulation size plastic putting cups (some new, some slightly used), 21 flagsticks that were only used for a year and are all in excellent condition.
Contact: Jason Stofferahn
The Legends Club
952-226-1148
jstofferahn@legendsgc.com

FOR SALE

Coremaster 6 greens and tee aerator
Like new. \$3,000 or best offer
Contact: GARY or AL
Viking Meadows Golf Club
763-434-5501

WANTED

Greens Rollers -- vibratory or weighted
Contact: JOE or MATT
Red Wing C.C.
651-388-9524

WANTED

Cushman Frontline Model #898804-8610. 3-wheeler. Wanted for parts.
Contact: Pete Grover or Tom Lundgren
Kathaven GC
763-786-2945

WANTED

14 hp Kohler engine to fit old GM 3-300 Toro. Hopefully in running order. Don't want to spend much as it's just a back-up tee mower.
Contact: JOHN BETCHWARS
Creeksend Golf Club
952-758-7202

WANTED

Super Court Master compact automatic grading system by Laser Leveling.
Want to rent for the summer.
Contact: MARK PLOMBON
Sawmill Golf Club
651-439-7819

FOR SALE

Foley Accu-Spin Reel Grinder - Model 3096. \$3,500.
Contact: KEITH or DAN
Oak Ridge Country Club
952-938-6900

FOR SALE

B&B Technologies Turf Tech 300 Sprayer. 300 Gal., pull behind sprayer 5.5 hp Honda Engine with centrifugal pump. Hose reel, electric boom, foam marker, flotation tires! year old, used ten times to spray fairways. Price: \$6,500.00 or best offer.
Contact: Joe or Matt
Red Wing Country Club
651-388-9524

FOR SALE

2000 Jacobsen Tri-King 1900 D. 3wd, diesel, 683 hrs, 10 blade reel. In Great Shape. Price: \$11,500.00 or best offer
Contact: Matt or Joe
Red Wing Country Club
651-388-9524

FOR SALE

1998 JACOBSEN 1800G TRI KING 1870 hrs. 72" Cut with 11 blade reels \$4,000 or best offer.
Contact: Steve Benson
Grand National Golf Club
320/384-7084

FOR SALE

1991 Cushman Outfront Rotary Kubota Diesel Engine 72" Mulcher Fully Equipped
Great Condition 2190 hrs. -- \$4,000
1991 Cushman Core Destroyer
Great Condition -- \$1,000

1991 Ryan Greenside II Aerator Comes with 1/2 and 5/8 holders push rods and slides, in good shape -- \$1000
Contact: Roger or Jim
Southview CC
651/451-1666

FOR SALE

Jacobsen parts -- new and used. Assorted Jac Groomer parts. Reel motor couplers. Roller and bedknife bolts. LF128 parts. HR5111 parts. Some Douglas roller bearings (complete sets). Good prices, make offer.
Contact: KURT HOVALDT
Marshall Golf Club
507-532-5164

GOLF COURSE FOR SALE

Arrowhead Golf and Country Club, Emmons, Minn. Located 10 miles south of Albert Lea and 5 miles north of Lake Mills, Iowa. 9-hole, Par 36 course measuring 3,188 yards from middle tees. Featuring bentgrass greens and aprons with bluegrass fairways and tees. Gently, rolling terrain with beautiful mature trees with a pond and bordering State Line Lake. Also included: Lake Point Bar & Grill. Located on the shores of beautiful State Line Lake just off Hwy. 169.

Special Features:

1. Banquet Facility and Dance Hall with Sound System (2,500 sq. ft.)
 2. Two Bars, 3. Pro Shop
 4. 20 golf carts (leased)
 5. New Irrigation Pump (installed 2001) Call for pricing.
- Contact: MICHAEL KLATTE, CGCS
Home: 763-473-7394
Cell: 612-382-9446

FOR SALE

Five (5) 1997 Club Car 48-volt electric golf cars with canopy's and sweater baskets. Bought new in the fall of 1997. Excellent condition. Original batteries. Asking \$1,450.00 per car or \$1,400.00 each if you take all five.
Contact: DALE BURMEISTER
Mayflower Country Club
Fairfax, Minn.
507-426-9964
mayflocce@prairie.lakes.com

FOR SALE

6 Smooth Rollers for Toro 27" reels ((61-0410) used for 200 hrs. at grow-in - \$60 ea. 5 Smooth Rollers for Toro 1000 used at grow-in (52-3170) - \$40 ea. Kushlan Mixer used for coloring sand - best offer 1 Toro Proline 44" self-propelled mower \$1,500. 1 Nutrient Injection System from Turf Feeding Systems - \$1,500
2 1,000 gallon fertigation tanks - \$250
Contact: MATT JOHNSON
StoneRidge Golf Club
651-998-0698
stoneridgemaint@aol.com

FOR SALE

2001 Jacobsen Tri-King 1900D diesel, 292 hours, 3wd excellent condition \$14,500.
Contact: DAN SWENSON
The Refuge Golf Club
763-753-8320

FOR SALE

Olathe Model 150 Snowblower, 52" width, designed to be mounted to Toro's 300 and 220-D Series tractors. Heavy duty 2-stage blower with electric operated directional chute rotates 180 degrees, this unit was mounted on a 345 Toro Groundsmaster and is in good shape. \$1,200 or best offer.

Contact: CHIP LOHMAN
Voyager Village Country Club
715-259-3926

FOR SALE

96 Jacobsen LF-123
Excellent condition w/ROPS & Cage. 2,000 hrs. Maintenance records available. Mowing now and ready for more. \$5,500. New set bedknives included.
Contact: DEL TAFT
Pine City Country Club
320-224-2550 or 320-629-3848

FOR SALE

\$8,900 - 1995 Toro 5300D 4wd, 2,590 hrs. \$1,500 - 1998 Toro Groundsmaster 3000, 2,631 hrs. \$1,000 - 1988 Toro RM216 Trim Mower, 3,200 hrs. \$4,995 - 1994 John Deere 3215, 2wd, 1900 hrs. \$1,000 - 1978 Toro Parkmaster \$900 - Bolt-on forklift attachments for loader bucket.
Contact: GUY LEACH
Spring Valley Golf Course
715-778-5513

FOR SALE

4 Jacobsen 422 Walking Greensmowers, all with grooming attachments and baskets, new reel stock in box, very good condition. \$1,500 each or will trade for Toro 3000 Groundsmaster.
Contact: BARRY WATERS
Clifton Hollow Golf Club
715-425-7551, ext. 23

FOR SALE

1998 Ransomes AR-250, 4WD Rotary 2,100 hrs. \$9,500 or best offer.
Contact: GENO or HARTLEY
Daytona Country Club
612-251-7938

FOR SALE

9-Hole Golf Course Northern Minnesota. Par 31, 2000 yards
Contact: CHRIS KLATTE
218-590-1454

FOR SALE

1-Toro VT4000 Central Irrigation Controller \$2,000. 14-Toro VT12 Electro-Mechanical Irr. Satellites \$100/ea. 40 hp Jacuzzi Centrifugal Pump (230 v) w/Starter 20 hp Berkeley Centrifugal Pump (230 v) w/Starter Pump Control Panel w/Pressure Switches 4" Cl Valve, Y-Strainer, Check Valves, Fittings, Pipe, Etc. Buy Everything for \$4500 Pump station and control system was installed in 1990 and fully operational until it was removed in 2001.
Contact: JEFF BACKSTROM
Cannon Golf Club
507-263-0831

FOR SALE

1999 68DL National Deluxe Mower with 50 hours on it. \$5,300 or make offer.
Contact: RICHARD GEIKE
Fritz's Resort
218-568-8988

Classified Ads are Free to Superintendent members of the MGCSA. E-mail scott@mgcsa.org or call 1-800-MGCSA-27. Please notify the office when items are sold.

Christmas in August –

(Continued from Page 5)

The uncovered plots were brown when the other covers were removed. It took 4-5 weeks before they were statistically similar to any of the covered plots and 6-7 weeks for full recovery. The recovery process was probably longer than normal due to the lack of snow cover which contributed to desiccation. One of the uncovered plots at RG had significant desiccation injury on the highest portion of the plot. After 7 weeks, there was still at least 50% injury whereas none of the covered greens received any desiccation injury.

GreenJacket plots took longer to green up than some of the other plots and had TQ ratings that were intermediate but ratings were significantly better than the uncovered plots.

The green/brown tarp provided excellent TQ and good color at RG however the ratings on campus suffered from some leaf tip browning after the covers were removed.

The American Excelsior covers were only used at the St. Paul campus on the USGA green, but they provided the highest overall TQ and color ratings. However, as we have seen with the other covers, it doesn't mean that they would necessarily perform the same at the other location.

The variation seen between the two locations could be attributed to the environmental conditions, location, soil type, grass species, or stand age.

Cost can be another important consideration when deciding upon the cover that best suits your situation. Table 1 lists the cost per square foot for each of the covers and additional notes about each option. Some companies offer early order and volume discounts. The costs for each cover should be adjusted to a cost per year based upon the anticipated longevity. The labor involved with the installation, removal and storage should also be considered. Discussion

Table 1

A list of covers used in the study, the cost per square foot and additional notes.

Cover	Cost/ft ²	Notes
Uncovered	\$0.00	Turf may be vulnerable to some injury during severe winters.
GreenJacket	\$0.12-0.17	Requires reinforcing tabs which are included along with spikes; can be cut to fit. Water impermeable.
Green/Brown Tarp	\$0.03-0.05	Only available in precut dimensions so multiple covers for each green may be required. Spikes also need to be purchased which adds to the cost. Water impermeable.
Crane Creek	\$1.00	Fully guaranteed for 10 years; custom cut to fit greens; yearly straw cost of about \$0.01/ft ² . Top layer is water impermeable.
American Excelsior	\$0.10-0.14	Storage can be an issue. Water permeable.

The biggest problem was on the newly established green. Because the soil was not yet stable, until the ground froze, it was difficult to keep the spikes anchored in the ground. All the covers except the American Excelsior allowed the wind to provide enough lift that the spikes would pull loose from the ground.

(Continued on Page 8)

Since 1973

HASSAN


Sand & Gravel
Rogers, MN
763-428-2393

Decorative Rock - Black Dirt
Driveway Aggregates - Washed Sand & Rock
Sand & Clay Fill - Golf Course Materials
Pick-Up or Prompt Delivery

13530 Willandale Road Fax 763-428-4710
Rogers, MN 55374 www.hassansand.com

The Aerating Fountain

from Otterbine



AT MTI DISTRIBUTING, we know that water quality is equally as important as aesthetics. That's why we offer Otterbine Aerating Fountains to manage your ponds and lakes, as they have been independently tested and proven to create excellent circulation and oxygen transfer. Effective circulation is key in reducing algae and the beauty of an Otterbine spray pattern speaks for itself!

Highlighted features include:

- Unique Mixed-Flow Pumping System
- Eight Interchangeable Spray Patterns
- 5-Year All Inclusive Warranty
- Decorative Float Covers



Brooklyn Center, MN
763-592-5600
800-362-3665
www.mtidistributing.com

Christmas in August –

(Continued from Page 7)

Other problems were also encountered. Some of the tabs for the GreenJacket covers did not adhere as they should have and allowed the covers to tear. You also cannot stake the cover with out the tabs. The grommets on the green/brown tarp could not always withstand the force from the wind and would tear off. We later learned that if we triple fold the edge of the tarp, the spikes didn't tear free. The Crane Creek cover also had grommets and some of the stitching in the tie downs tear off during a wind storm. Also, the straw removal for the Crane Creek cover was very laborious and you need to have a place for disposal or composting of the straw. Although there were no problems with the American Excelsior ripping or coming up, it did allow dirt that had blown onto the green from a nearby open field to filter down through the cover and leave a thin soil layer on top of the sand profile and the turf along the seams sometimes responds differently. American Excelsior are also very bulky and can create a storage problem.

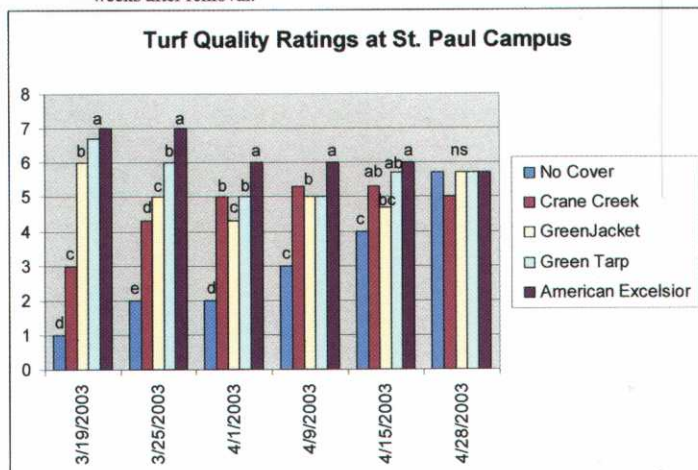
Noticeably, both the green/brown tarp and the GreenJacket stretch after the sun warms them. They were less prone to the wind pulling them off if they were spread out temporarily and allowed to warm before the final stretching and staking.

(Continued on Page 9)



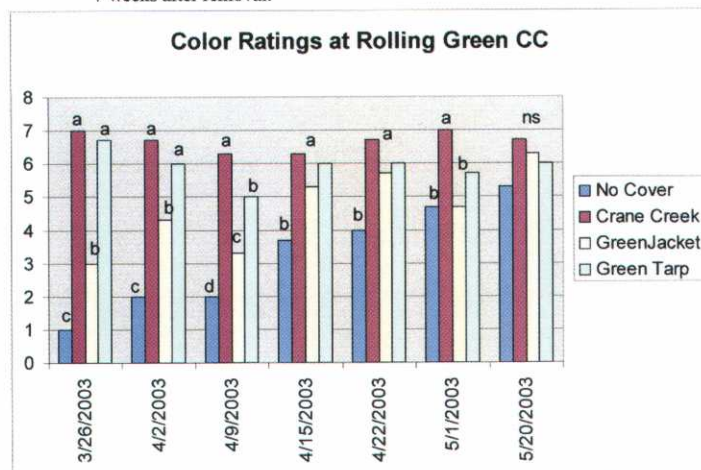
Green 7 at Rolling Green Country Club the day the covers were removed. The uncovered portion was severely desiccated.

Figure 2. Turf quality ratings on the USGA green the day of cover removal and for 6 weeks after removal.



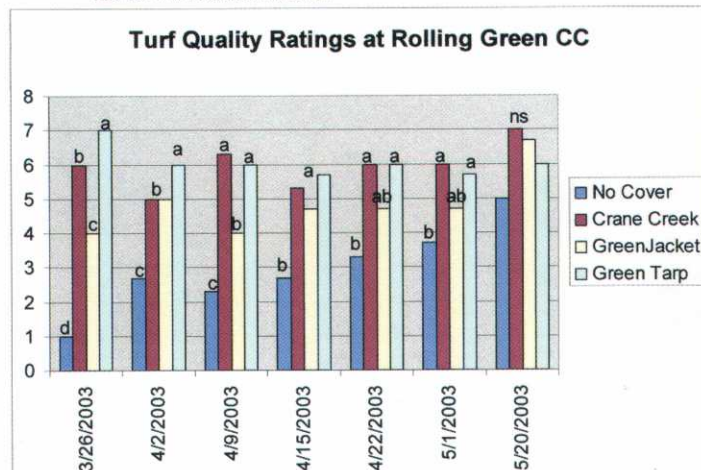
Bars labeled with the same letter within each date do not significantly differ (P=.05).

Figure 3. Color ratings at Rolling Green Country Club the day of cover removal and for 7 weeks after removal.



Bars labeled with the same letter within each date do not significantly differ (P=.05).

Figure 4. Turf quality ratings at Rolling Green Country Club the day of cover removal and for 7 weeks after removal.



Bars labeled with the same letter within each date do not significantly differ (P=.05).

Christmas in August—

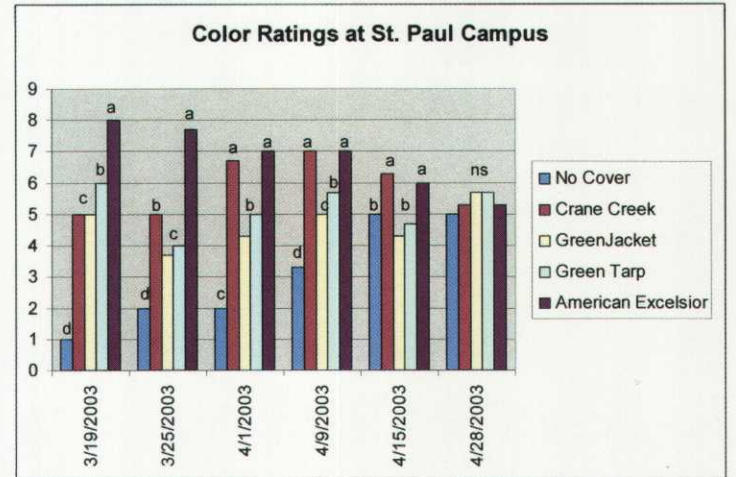
(Continued from Page 8)

No matter which type of cover is used, it is extremely important that fungicides be applied for the prevention of snow mold. Most of the covers retain moisture or allow the surface to remain wet for longer periods of time than uncovered turf. This increases the likelihood of having an incidence of typhula blight or microdochium patch.

This first year of data showed that all of the covers tested provided increased TQ and color ratings over the uncovered areas. However, it also showed that under differing site conditions each cover might perform differently. Therefore, it is important to take your specific factors into consideration when choosing the right cover for your greens. If you are in a site with very cold temperatures and little snow cover, you may want to use a Crane Creek or American Excelsior cover to provide some protection from low temperature injury. If your potential problem is crown hydration from excess water, you may want to use one of the water impermeable covers (Table 1). However, if your only concern is desiccation, any cover may work well. Finally, during open winters like the one we just had, covers can provide you with good quality turf 4-5 weeks sooner than when covers are not used.

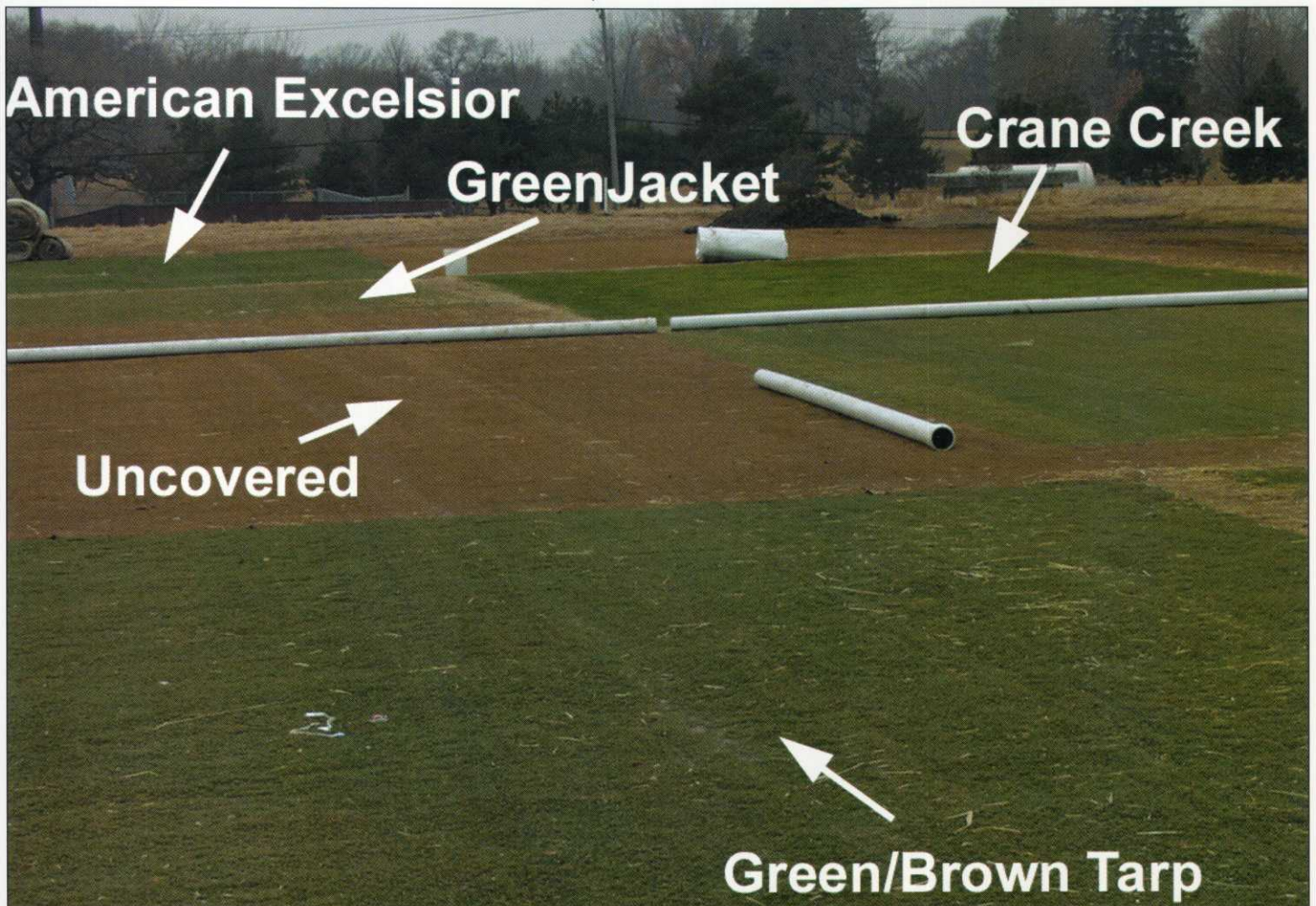
We look forward to collecting the second years data and seeing how it compares.

Figure 5 Color ratings on the USGA green the day of cover removal and for 6 weeks after removal.



Bars labeled with the same letter within each date do not significantly differ (P=.05).

Below: An example of all treatments at the TROE Center on the day that the covers were removed, March 18, 2003.



**"The most advanced
amino acid based foliar fertilizer
technology available today."**



©1995 GRIGG BROS.

**Gary's
Green™**

**Nutra
Green™**

**Tuff
Turf™**

**P-K
Plus™**

Sili-Kal-B™

Suprema™

**Ultra-
Plex™**

**Carbo
Plex™**

**Bio
Blend™**

Grigg Bros. Liquid Fertilizer Now Available Through



Turf & Chemical Inc.

Visit our website at www.precisionturf.com

Phone: 763-477-5885 • Toll-Free: 800-925-8873 • Fax: 763-477-6511
7728 Commerce Circle • Greenfield, MN 55373