

MGCSA MINUTES
BOARD OF DIRECTORS MEETING
MAY 10, 1999

By Michael Brower, MGCSA Secretary

Treasurer's Report

Panuska reported that MGCSA investment portfolio gained \$5,286 for a total of \$162,434. Motion made by Eckholm to move \$11,995 from cash fund to Janus Capital Growth Fund.

Operating Budget

Discussion regarding operating budget for the next fiscal year. Motion made by Klatte to increase monthly meeting expense to \$30. Approved. Motion by Eckholm to donate \$3,000 to fund the upcoming campaign of Jim Nicol for election to the GCSAA Board. Approved. Motion made by Eckholm to approve operating budget as changed by previous motions. Approved.

Communications

GCSAA mailed video which gives a general overview of The GCSAA Foundation's "Investing in the Beauty of Golf." Letter has been written by President Tom Fischer to GCSAA nominating Jim Nicol for the GCSAA Board of Directors. Letter received from GCSAA asking for nominations for the Distinguished Service Award.

Business Office

Turtinen reported that 30 teams registered for the Turf Tourney compared to 23 last year. Discussion about future web page site and server for the MGCSA.

Human Resources

Eckholm presented the results of the salary survey.

Membership

Meier reported that there were four new member applications and four requests for reclassification. All applications and requests approved.

MTGF

Brower reported on discussion with MTGF Executive Director Bob Mugaas regarding the Turfgrass Research Center proposed for Rosemount, revenue sharing with allied associations and the upcoming MTGF Golf Tourney and Expo on July 20-21 at the University of Minnesota.

Scholarship

Queensland reported that the Scholarship Scramble entry fee will be \$70. Expense per person will be \$33 resulting in a \$37 profit for each participant. Estimated attendance is 200 players. Discussed scholarship budget for the upcoming fiscal year.

— Michael Brower
MGCSA Secretary

MGCSA MINUTES
BOARD OF DIRECTORS MEETING
JUNE 7, 1999

By Michael Brower, MGCSA Secretary

Treasurer's Report

The profit and loss statement of the monthly meetings shows a loss. This doesn't reflect Affiliate dues income. Members should be made aware of what their dues go towards.

Panuska makes a motion to use the same accountant as last year....Motion passed.

Communications

Don Taylor's Topdressing report was sent in and will be published in *Hole Notes*. USGA gave \$3,125 donation to Taylor's topdressing study. GCSAA received Fischer's nomination letter for Jim Nicol.

President's Report

Tom Fischer must replace Pat Walton on the Board due to Pat's illness. Discussion follows on possible people to fill the position. 1) Fischer makes a motion to appoint E. Paul Eckholm to fill the vacancy of Vice-President. Discussion follows....Motion passed.

Business Office

Discussion about refunds/make up days for Turf Research Benefit Week because of inclement weather. Cardio Trauma Kits for the Board were handed out for inspection. Karl Simon proposal handed out for MGCSA Web Page. Eckholm and Turtinen plan a Website meeting at Heritage Links.

Bylaws

Meier will have a change in bylaws in Article II, Section 3. Changing the word elections to appointments.

Conference and Education

Klatte updated the Board on the MTGF Conference. Prayer Breakfast will change to a luncheon at the Conference for an additional registration fee. March 2000 Mini-Seminar will feature Hurdzan & Hummel on March 8-9. MGCSA portion is still being worked on. Klatte is trying to get local superintendents that have new construction.

Industrial Relations

Dan Miller is checking on rooms for the National Hospitality Night.

Membership

Motion to accept new members. Motion passed.

Scholarship

Queensland reported about Committee meeting. The committee moved some dollars into an interest-bearing account. Mechanics scholarship has no movement at present time. There were 10 Legacy scholarship applications received and 6 Turf applications. The Scholarship Scramble fee will be \$80. This includes everything. MGCSA expense for this event is \$48.95 per player.

Old Business

Dues increase discussion. Churchill offered 3-year dues increase suggestion. 1st year increase, 2nd year and 3rd year. More discussion on dues follows.

— Michael Brower
MGCSA Secretary

Olson, Krahn, Larson and Femrite Win June Mixer at Benson

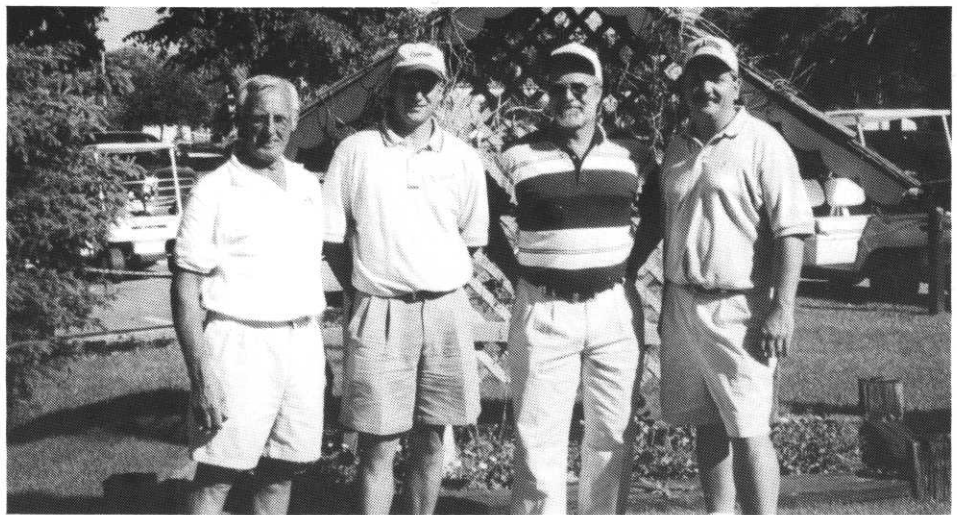
David Sime, host superintendent at Benson Golf Club in Benson, welcomed MGCSA members to the club for the Association's June 7 meeting. Dave had the course in fine condition along with 90 degrees and blue skies.

Craig Paskvan, Paskvan Consulting, talked to superintendents about managing soils and reading a soil analysis report.

The team of John Olson, Cushman Motor Company; Willis Krahn, Mountain Lake Golf Development; Bruce Larson, Benson Golf Club, and Cary Femrite, Turf Partners, won the mixer with a 23-under par score of 121.

Jeff Nourie, MTI Distributing Company; Terry Negen, Benson Golf Club; Brian Peterson, Southbrook Golf & Country Club, and Tim Berquam, Bergerson Caswell, finished second at 124.

There were two field events held during the golf outing. Angie Frem-



THE WINNING GROUP was, from left to right, Willis Krahn, John Olson, Bruce Larson and Cary Femrite. Their 23-under-par score of 121 was good for first place.

ling won the long drive competition and Lindy Maanum won closest-to-the-pin. Both players are from Benson Golf Club. Lindy was medalist for the day with a 71. Bill McDonald, E-Z-GO, fired a 75.

Tom Wodash, Eagle Creek Golf

Club, made two eagles during his round. Tom sank a 35-foot putt on the par 5 seventh hole and chipped in on 16, another par 5.

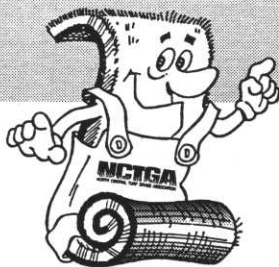
Our next meeting is the Scholarship Scramble at Izaty's Golf & Yacht Club on July 12.

QUALITY SUPPLIER OF TURF

- Washed and Regular Turf (Sod) in 1¹/₂ yd. or up to 55 yd. Big Roll Size (42" Wide)

TURF TYPES:

- ELITE KENTUCKY BLUEGRASS BLEND
- SPORTS TURF
BLUEGRASS/P. RYEGRASS BLEND
BENTGRASS



MEMBER

| | |
|-------|-------|
| NCTGA | MGCSA |
| MSTMA | WTA |
| SDGSA | ISTMA |
| MTGF | TPI |

For Quality Turf Contact:
(612) 674-7937 • FAX: (612) 674-7044

8651 Naples St. N.E.
Blaine, MN 55449

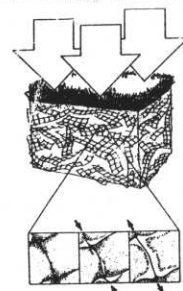
QUALITY CONSTRUCTION & RECONSTRUCTION

- Golf Courses
- Sports Fields



NETLON® ADVANCED TURF SYSTEMS

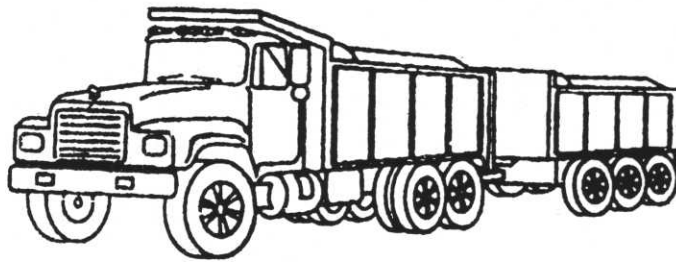
Self-Cultivating means healthier turf and better drainage.



NETLON® MESH ELEMENTS AND MIXES

For Compaction Resistance on cart paths, sports fields and other high use areas.

For Quality Construction & Nelton® Products Contact:
(612) 784-0657 • FAX: (612) 784-6001



LEITNER COMPANY

Specializing in Soils for Golf Course Maintenance & Construction

Soil mixing and processing specialists.

Supplying the Golf Course Industry with soil and sand products for over 50 year.
From 10 yards to 10,000 yards — material to specification for topdressing and construction.

Quality — Reliability — Experience

MIKE LEITNER

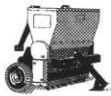
LEITNER COMPANY

945 Randolph Avenue • St. Paul, Minnesota 55102

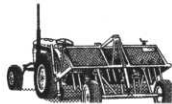
(651) 291-2655

PROUD SUPPORTER OF RESEARCH AND EDUCATION THROUGH THE MGCSA

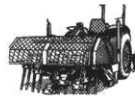
VERTI-DRAIN® & VERTI-SEED® available only from PRECISION TURF & CHEMICAL, INC.



Verti-Seed
Overseeders



200 H Model -
16 inches deep



205 Model -
16 inches deep

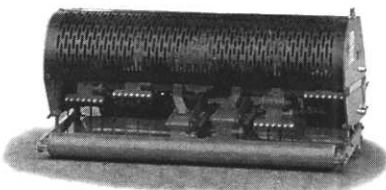


250 Model -
16 inches deep



405 Model -
24 inches deep

These two new aerators can make your job 70% easier!



7316 Model

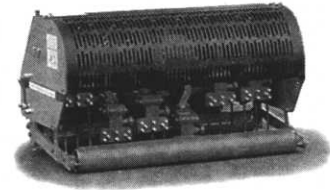


Turf & Chemical Inc.

7728 Commerce Circle • Greenfield, MN 55373

Office 612.477.5885 • 1.800.925.8873

Fax 612.477.6511



7212 Model

ORDER YOURS NOW FOR SPRING DELIVERY!!!

MGCSA Affiliate News

John Harris Joins MTI Distributing

MTI Distributing has announced the addition of **John Harris** to its commercial and irrigation products sales team.

Butch Greeninger, Director of Sales for MTI said, "John's 18 years experience as the superintendent at Lafayette Club has given him a clear understanding of the needs of today's professional turf manager. This understanding is valuable to our providing continued customer satisfaction to the professional turf management industry."

John joined MTI on June 7, 1999. He will be responsible for inside sales support. John will work with Terry Olmem to serve customers in North Central and Northeast Minnesota and Northwest Wisconsin. John may be reached at (612) 475-2200, ext. 103 or 1-800-492-9972.

North Star Turf Supply Adds Staff Members

North Star Turf announces the addition of key personnel in the areas of sales and service.

Tom Fuller has joined the sales staff and will be located in the St. Paul office. Tom will assist the selling efforts of all North Star Turf Supply sales personnel by providing internal sales and administrative support. Tom comes to NSTS from Rush Creek Golf Club where he served as the club's golf course superintendent.

Jay Munson has been promoted to technical sales representative as of April 26. Jay will manage a territory including northern and northeastern Minnesota after spending the 1998 season managing the company's supply truck.

Also, joining NSTS's Service Department this spring are **Al Johnson** and **Andy O'Connell**. Both joined the Service Department's staff of technicians and will provide much welcomed support.

Another who joined the Service Department is **Greg Johnson**. Greg will serve as NSTS's Service Manager, overseeing the day-to-day operation of the department. This enables **Jim Newton**, the company's interim service manager, to fill the role of Customer Service Support Manager. Newton's new responsibilities will include providing in-field technical and demonstration support. He will also supervise Johnson with managing the company's service department.

Finally, **Faith Windmeier** rejoins the staff of NSTS's Parts Department. She will work with **Terri Anderson** in serving customer's parts related needs. Windmeier replaces **Steve Good**, who recently accepted a support position within the Service Department.

Dan Miller, President of North Star Turf Supply, expressed excitement with the new hires. "As the turf market continues to change, so must North Star," he explains. "The changes we have experienced and the new staff additions, reflect continued growth within the golf and turf markets and our desire to improve our level of customer service."

MEMBERSHIP REPORT

NEW MEMBERS: JUNE 7, 1999

| | Class |
|---|---------------------|
| Chris Fossen Priare Ridge Golf Course 2121 Marwood Dr., Mankato, MN 56001 W: (507) 234-5533 | B (pending) |
| Paul W. Babb Lafayette Club 5259 Eden Rd., Mound, MN 55364 W: (612) 471-8493 | C - GCSAA (pending) |
| Riley Kieffer Dacotah Ridge Golf Club 217 E. Chestnut, Apt. 2, Redwood Falls, MN 56283 W: (507) 644-7844 | C - GCSAA |
| David J. Soltvedt Michigan State University 201 Valley View Road, Karlstad, MN 56732-0153 H: (218) 436-2501 | C - GCSAA |
| Brian J. Wallin Nemadji Golf Course 1519 N. 58th St., Superior, WI 54880 H: (715) 394-7231 | Student |
| Tim Peterson Bearpath Golf Club 14423 Spring Lake Rd., Minnetonka, MN 55345 W: (612) 975-0541 | D |
| Mark C. Erickson Erickson Marketing 3611 Crestwood Dr., Alexandria, MN 56308 W: (800) 630-8427 | Affiliate |
| David Howrey Howrey Construction 316 Austin, Rockwell City, IA 50579 W: (712) 297-8182 | Affiliate |
| Charles Padula United Horticultural Supply 1515 45th Ave. N., Minneapolis, MN 55412 W: (612) 535-1030 | Affiliate |

RECLASSIFICATIONS

| | |
|---|----------------|
| Jim Wodash Eagle Creek Golf | A to AA |
| Cary Femrite Turf Partners | A to Affiliate |
| Scott Novak Meadow Lakes Golf Club | B to A - GCSAA |
| Alex Ellram University of Minnesota / Crookston | B to E |
| Joe Otto Willinger's Golf Club | D to C |

—Tom Meier
MGCSA Membership Chairman

Here's a Hole-by-Hole View of Heritage Links Golf Club

(Editor's Note: Following is a hole-by-hole preview of what to expect when playing Heritage Links Golf Club.)

* * * *

1 **351 Yards**
Par 4
A good par 4 opening hole. Ideal tee shot is left side of the fairway between fairway bunker and 150-yard marker. Stay away from long or right on your second shot.

2 **555 Yards**
Par 5
The first of three par 5s. There are three hidden bunkers on the right side of this fairway. Left center of fairway is a good play. Use the right hand tower for direction on the second shot. A pond runs down the left side of the fairway and covers the area of 80 yards and in.

3 **434 Yards**
Par 4
A great par 4. A tee shot in the direction of the 150-yard marker is a good play. Beware on the second shot of the marsh on the right side of the fairway. Take your par and run!

4 **165 Yards**
Par 3
This par 3 is exactly what you see! A bunker short, a marsh long. Remember when figuring your yardage that you are teeing off from an elevated tee.

5 **544 Yards**
Par 5
The second of the par 5s is a long one. Be sure to aim your tee shot at the left bunker for an optimal second shot. Anything left on your drive will not hurt you, right may sting a bit with a hidden pond at the corner. Whether you're laying up or going for it on your second shot, the right tower is the target. Beware of the marsh protecting the left side of the green.

6 **360 Yards**
Par 4
Any tee shot left will not hurt you. The second shot requires a precision play to a peninsula green. The only bail out spot on the approach shot is left. Long, right or short is a watery grave.

7 **203 Yards**
Par 3
This par 3 requires a great long iron or fairway metal. The only obstacle, other than distance, is a bunker on the left side of the green.

8 **355 Yards**
Par 4
A very tricky tee shot! The best play is to hit whatever club can get you to the 150-yard marker. This way your ball will not find the creek and the trees will not affect your approach shot as much. The second shot is uphill so pick your club accordingly.

9 **387 Yards**
Par 4
Ideal drive is between the left fairway bunker and the 150-yard marker. There is a second fairway bunker protecting the right side of the fairway along with a marsh for any drive 250 yards or longer. The green starts from back to front, so any approach long is very difficult.

10 **305 Yards**
Par 4
The tee shot here sets up the entire hole. The prudent play is any club that can get you to 120 yards from the green. To carry the creek on your tee shot requires a carry of 250 yards. The green is very elevated so play accordingly when choosing your club on the approach shot.

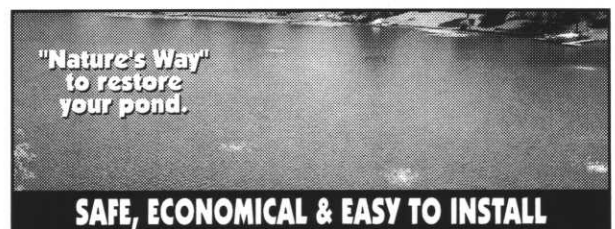
11 **176 Yards**
Par 3
A great par 3. Elevated tee to a clover-shaped green. Water protects the left side, so the only bail out spot is short and left. Word of caution — watch the wind. It can cause havoc with your ball.

(Continued on Page 26)



POND FILTRATION INC.
POND PERCULATOR

**TO BRING A POND BACK TO LIFE...
YOU MUST FIRST BRING LIFE
BACK TO THE POND!**



"Nature's Way"
to restore
your pond.

SAFE, ECONOMICAL & EASY TO INSTALL

Re-Circulates (Inversion) from TOP to BOTTOM
Oxygenated water... 120,000 gallons per hour
\$18.00 per month electrical usage

Available At:

HEDBERG
AGGREGATES
"Built on Service"

Call
Mark Danelski
(651) 423-5048
For All Your
Pond Needs

Heritage Links—

(Continued from Page 25)

12 399 Yards
Par 4

This par 4 will test every shot you make on the hole. A tee shot in the direction of the right, white tee marker is your best play. Out-of-bounds cuts in quickly on the left. The water on your tee ball is approximately 280 yards away. Your approach shot over the water will also have to deal with two greenside bunkers and an extremely narrow green.

13 256 Yards
Par 4

Risk/reward at its finest. A tricky par 4. The landing area is approximately 180 yards from the tee. A small bunker protects the right side. Big hitters can hit the green but a deep bunker in front, trees on the right, and a large drop off to the left may lead you to the more prudent play.

14 133 Yards
Par 3

A very "testy" short par 3. Shot selection is crucial. Remember,

you are standing on an elevated tee and you are sheltered from the effects of the wind. Left and long are disastrous. The only bail out spot is short and right.

15 373 Yards
Par 4

Hole number 15 has out of bounds on the left and fairway bunkers protecting the left side of the fairway. Any tee shot right will not hurt you. The approach shot is downhill to a green protected by a marsh in front and a steep bank long. Be aware that your approach shot will play a little shorter because it is downhill.

16 553 Yards
Par 5

A very demanding par 5. There are out-of-bounds to the left and a marsh to the right for big hitters. The ideal position is in line with the tower in the distance. The lay up area on this hole has two bunkers protecting the left side and a large marsh to the right. The marsh covers the area from 100 yards and in. Big hitters may reach this green in two, but a big number awaits any missed shots.

17 476 Yards
Par 4

This picturesque par 4 is best played with any club that can get you to the 150-yard marker on your tee shot. The marsh can be carried with a drive of 240 yards or more but it does leave you a tricky second shot from a steep slope. The approach shot to this very deep green requires good club selection. The green from front to back can be as much as a full club difference.

18 395 Yards
Par 4

As tough a finishing hole as you will find anywhere. Two ponds protect the landing area for your tee shot. The pond on the left begins at 216 yards from the tee. The pond on the right begins at 225 yards from the tee. Favor the right side of the fairway for the ideal approach shot. This shot will require a long distance club to an elevated and deep green. The elevation on this hole may lead you to choose an extra club.

4 fl. oz./1000² ft

+

4 oz./1000² ft



Outstanding control of dollar spot,
brown patch and pythium. Your best
manager of summer stress complex.

RHONE-POULENC AG COMPANY

P.O. Box 12014, 2 T.W. Alexander Drive
Research Triangle Park, NC 27709
1-800-334-9745

The Clear Choice.

Finding the right products for disease prevention and control just got easier with the introduction of Spectro™ from Cleary Chemical.

Spectro is based on a physical combination of Daconil Weather Stik® and 3336™ fungicides—two of the best formulations for disease control on the market today. Cleary has removed the guesswork from tank mixing by creating Spectro, a 90% WDG. Make no mistake, there is no other product with this unique formulation.

Field research demonstrates that Spectro's contact and systemic action provides one of the widest spectrum of disease control available. Effective against Brown Patch, Dollar Spot, Anthracnose and Gray Leaf Spot, Spectro performs with a lower cost per use. All this plus less plant stress than DMI's during the heat of the season.

Choose a proven winner with outstanding results that won't break your budget.

Spectro—The Clear Choice for summer turfgrass disease control.



Spectro



Leading the industry in turf and ornamental management

Cleary Chemical Corporation, 178 Ridge Road, Dayton, NJ 08810, 800-524-1662, Fax 732-274-0894

336™ and Defend™ are trademarks of the Cleary Chemical Corporation.

Daconil Weather Stik™ is a trademark of a Zeneca Group Company.

Now Available in a 5 lb. bag/20 lb. case
Call us for more information

Cary Femrite
(612) 856-3100

Leif Erickson
(800) 728-0354

Chris Quinlan
(800) 484-9555, ext. 8539

Williams Gill



& Associates Golf Course Architects

Office (715) 425-9511
Facsimile (715) 425-2962
E-mail golfwga@presenter.com

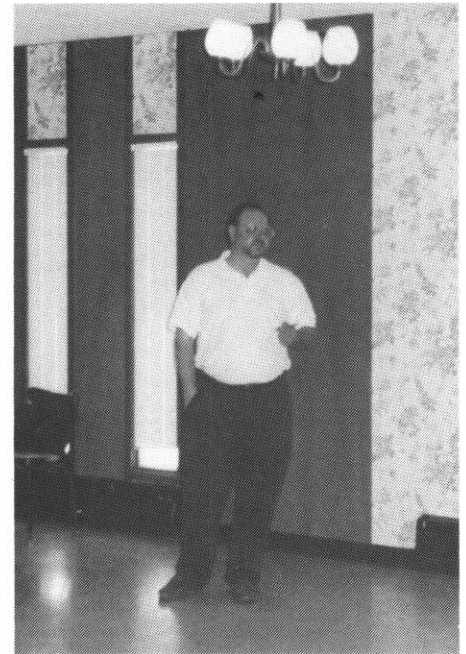
Williams, Gill of Wisconsin

Garrett Gill, Principal

122 N. 2nd St.
River Falls, WI 54022

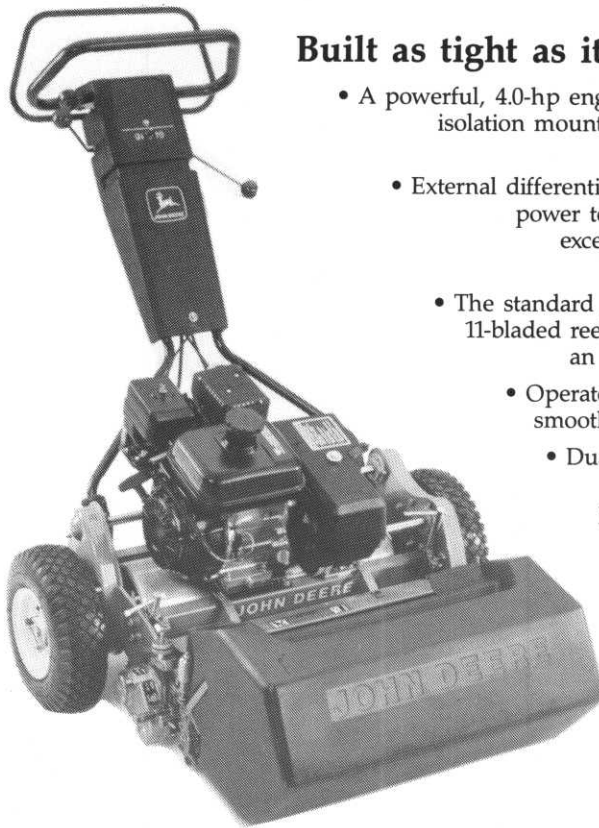
• Services •

- New Course Design
- Master Plans
- Golf Practice Center Design
- Environmental Planning
- Irrigation Design
- Renovation & Restoration
- Site Planning



CRAIG PASKVAN gave an informative talk at the Benson Meeting.

John Deere 180 Walk-behind Greens Mower



Built as tight as its cutting width.

- A powerful, 4.0-hp engine powers the 180 while isolation mounts and lateral bracing help reduce vibration.
- External differential drive on the 1870 splits power to both traction rolls — for exceptionally straight tracking and easy turning.
- The standard John Deere-manufactured 11-bladed reel on the 180 helps deliver an exceptional quality-of-cut.
- Operator-presence safety bail fits smoothly against the handlebar.
- Dual aluminum traction rolls on the 180 are smooth to provide a more consistent surface. They combine to cover the entire length of the bedknife.
- Both the 180's machine-grooved and machine-smooth front rollers are cut from solid bar stock to deliver more strength and better mowing performance.
- Grass catcher designed to maximize clipping retention, stays securely in place and is easy to remove and install.



Polfus Golf & Turf

12040 Point Douglas Drive S.
Hastings, MN 55033

Phone: (612) 437-7747

Fax: (612) 437-3483



ANGIE FREMLING won the long drive competition at the June Mixer in Benson.

1999 MGCSA MONTHLY MEETINGS

JULY 12

Izaty's Golf & Yacht Club
Host: *Steve Schumacher, CGCS*

AUGUST 12

Heritage Links Golf Club
Host: *E. Paul Eckholm, CGCS*

SEPTEMBER 12

Cragun's Resort
Host: *Tom Kientzle, CGCS*

OCTOBER 11

Albion Ridges
Host: *Brooks Ellingson*

DECEMBER 8, 9 & 10

MGCSA Annual Meeting
MTGF Conference & Trade Show
Minneapolis Convention Center

**We can tell you
what to plant,
where to plant,
when to plant.**

**Guess that makes us
plant managers.**

Whatever your needs for your golf course, Peterson Seed can help. They can supply grass seed for everything from tees and greens to fairways and roughs. Whether you're building a new course or renovating an existing one, Peterson Seed offers expert advice and dependable products.

© 1999 Peterson Seed Company, Inc.

TURF SEED



PETERSON SEED CO.
Helping your seed business grow.

1-800-328-5898

The Legacy Advantage...



LEGACY
by **Hunter**

Whether retrofitting your existing golf irrigation system or planning a new course with state of the art components, take a look at Legacy by Hunter. Our rotors offer technically-advanced features and water-saving benefits, while our Genesis control systems are easy to program and offer the management tools you need to keep your course in great playing condition. For technical assistance and after-sale support, your local Legacy distributor is ready to help.

Take a closer look at the Legacy Advantage...

WESTERN MINNESOTA
AUTHORIZED HUNTER DISTRIBUTOR

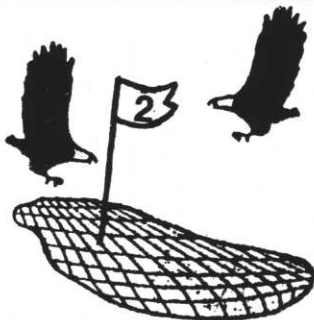


**REAMS
SPRINKLER
SUPPLY**

Des Moines, Tel: 800-373-2907



THE RUNNER-UP TEAM AT THE BENSON MIXER was, from left to right, Brian Peterson, Terry Negen, Tim Berquam and Jeff Nourie.



**Double Eagle
Golf Construction**

*Redesign the Old
...Construct the New*

Mel Strand, CEO
35 years experience

17715 Jefferson St. NE • Ham Lake, MN 55304 • **(612) 434-0054**

**MGCSA DUES
ARE
NOW
PAST DUE.**

**PLEASE SEND
IN
PROMPTLY
TO BE SURE
YOU ARE LISTED
IN THE NEW
DIRECTORY.**

**CALL THE
MGCSA OFFICE
IF YOU NEED
A NEW
DUES STATEMENT
(612) 473-0557
1-800-642-7227**

Analytical Services By:



Paskvan Consulting
Route 1, Box 77A
Akeley, MN 56433
218-652-3542 Office
218-652-2949 Fax
paskvanconsulting@unitelc.com

"Where Success is Never an Accident"

**Specialists in Soil & Plant Nutrition
Tailored to Golf Courses and Sports Turf**

We provide the following services:

- Complete inventory of the soils on the course or job site
- Sampling, Analysis, Delivery and Interpretation of the results to save you money
- Recommend corrective fertilizer materials to save you money
- Physical analysis on sand-soil-peat to determine proper mixing for greens and topdressing
- Irrigation quality analysis
- First lab in the country A2LA accredited under the new USGA guidelines for new greens construction
- Fast turn around time, yet quality is never compromised



HOST SUPERINTENDENT AT BENSON was Dave Sime, left, with his assistant Terry Negen.