

# The Kawasaki 2520 Mule

**A** heavyweight investment deserves every ounce of protection you can muster. Enough power to move substantial loads comes courtesy of a big, 617 cc liquid-cooled V-Twin engine. You'll make fewer trips, too, because the Mule 2520's big, tilting cargo bed can carry up to 800 pounds per load. If that doesn't cut it, you can hook up a trailer and more than double your carrying power. And best of all, the Mule 2520 cruises over your turf on wide, turf-application tires, disturbing little more than the early-morning dew.



## Kawasaki



- Liquid-cooled, V-Twin engine
- Air intake system overhead
- 800 lb. capacity cargo bed, pick-up style
- Rack & pinion steering
- Sound-insulated and extra-quiet muffler
- Governed to 16 mph for safety
- Lock-out differential for minimum ground disturbance
- Full line of accessories available

Call today...

(612) 333-3487 or

Toll Free 1 (800) 759-5343

for a free on site demonstration.



**CUSHMAN MOTOR CO., INC.** **CUSHMAN TURF-CARE EQUIPMENT**

2909 EAST FRANKLIN AVENUE • MINNEAPOLIS, MINNESOTA 55406 • (612) 333-3487 • FAX (612) 333-5903 • TOLL FREE 1-800-759-5343

# HOLE NOTES

Official Publication  
of the  
Minnesota Golf Course  
Superintendents' Association

## 1999 MGCSA BOARD OF DIRECTORS

### Officers

President . . . . . Tom Fischer, CGCS  
Edinburgh USA  
612/315-8582 • Fax: 612/315-8585

Vice-President . . . . E. Paul Eckholm, CGCS  
Heritage Links GC  
612/440-6494 • Fax: 612/440-6496

Secretary . . . . . Mike Brower  
Hillcrest CC  
651/777-5186 • Fax: 651/777-7463

Treasurer . . . . . Rob Panuska  
Waseca Lakeside CC  
507/835-2574 • Fax: 507/835-3472

Ex-Officio . . . . . Jim Nicol, CGCS  
Hazeltime National GC  
612/448-3626 • Fax: 612/448-1726

### Directors

Jeff Churchill . . . . North Star Turf Supply  
800/592-9513 • Fax: 612/484-8257

Rick Fredericksen, CGCS . . . . Woodhill CC  
612/473-5811 • Fax: 612/473-0113

Jim Johnson, CGCS . . . . Rich Spring GC  
612/685-4322 • Fax: 320/685-3461

Mike Klatte, CGCS . . . . Elm Creek GL  
612/478-8592

Tom Meier . . . . . Worthington CC  
507/376-9250 • Fax: 507/372-2597

John Queensland . . . . Cedar River CC  
507/582-3595 • Fax: 507/582-3133

Steve Shumansky . . . Perham Lakeside CC  
218/346-6071

Bob Simondet . . . . . LESCO, Inc.  
320/327-2929 • Fax: 320/327-2929

\* \* \* \*

### EDITOR

Steve Shumansky  
E-mail: plcc@eot.com

\* \* \* \*

### Editorial and Business Office

Scott Turtinen, Executive Director  
Minnesota Golf Course  
Superintendents' Association  
240 Minnetonka Avenue South/P.O. Box 617  
Wayzata, Minnesota 55391-1617  
Tel: 612/473-0557 • Fax: 612/473-0576  
Toll Free: 800-642-7227



## FROM YOUR PRESIDENT'S DESK

### Eckholm Replaces Walton As Vice President Of Our Association



Is it spring or is it summer, the weather can't make up its mind. Lows in the 40s one day and a few days later the highs are in the 80s. With rain about every other day it is hard to complete projects or keep up with the normal maintenance.

\* \* \* \*

**At the last Board meeting**, the Board was informed that Pat Walton could not continue as Vice President of our association. Due to Pat's illness he felt that his treatments would last into the fall and it would be hard to divide his time between his family, job and still do the work of vice president.

The Board members discussed the proper way to replace this position, which led to the appointment of E. Paul Eckholm, CGCS to serve out the term of vice president. The Board voted unanimously to approve the appointment.

Paul, at an earlier Board meeting, had expressed interest in running for Vice President in December, therefore I felt he was the logical choice to replace Pat.

On behalf of the association, I would like to wish Pat a speedy recovery. He did an excellent job on the Board and hopefully would consider running for office when he is well.

\* \* \* \*

**The next event will be the Scholarship Scramble on July 12** at Izaty's Golf & Yacht Club. Bring your crew and enjoy the new addition to the golf course.

— *Thomas Fischer, CGCS  
MGCSA President*

**LAST CHANCE TO SIGN UP FOR  
THE SCHOLARSHIP SCRAMBLE  
AT IZATY'S ON MONDAY, JULY 12.**

**CALL (612) 473-0557 OR 1-800-642-7227 IF YOU WANT TO PLAY.**

**ALSO...MARK AUGUST 16 ON YOUR CALENDAR FOR THE  
MGCSA CHAMPIONSHIP AT HERITAGE LINKS GOLF COURSE.**

HOLE NOTES (ISSN 108-27994) is published monthly except bi-monthly December/January, February/March for \$2 an issue or \$20 per year by the Minnesota Golf Course Superintendents Association, 240 Minnetonka Avenue South, Wayzata, MN 55391-1617. Scott Turtinen, Publisher. Periodicals postage paid at Wayzata, MN. POSTMASTER: Send address changes to HOLE NOTES, 240 Minnetonka Avenue South, Wayzata, MN 55391-1617.

## Inside This Issue of Hole Notes

### 5 Environmentally Friendly Deacon's Lodge Opens

By Ralph Turtinen

### 9 Decade of '90s Interesting For Scott Schunter

By Ralph Turtinen

### 12 Arnie and Jesse Officially Open Deacon's Lodge

By Ralph Turtinen

### 13 Minikahda Celebrates 100 Years as a Golf Course

By Jack Kolb

### 22 Olson, Krahn, Larson And Femrite Win at Benson

By Scott Turtinen

### 24 Affiliate News from MTI And North Star Turf Supply

### 25 Hole-by-Hole View of Heritage Links Golf Club

By E. Paul Eckholm

## Advertisers

Century Rain Aid	10
Century Rain Aid	29
Classified Ads	32
Country Club Turf	BC
Cushman Motor Co.	IFC
Double Eagle Golf Construction	30
Glenn Rehbein Companies	22
Hartman	4
Hedberg	25
Herfort-Norby	31
Howrey Construction	11
Leitner Company	23
MTI Distributing Co.	6
MTI Distributing Co.	18
MTI Distributing Co.	19
North Star Turf Supply	16
North Star Turf Supply	IBC
Par Aide	34
Paskvan Consulting	30
P&H Warehouse	14
P&H Warehouse	20
Peterson Seed	29
Plaisted Companies	33
Polfus Implement	28
Precision Turf & Chemical, Inc.	23
Prinsco	31
Rhone-Poulenc	26
Tee Shot Marketing	17
Tessman Company	8
Turf Partners	27
Williams & Gill	28

## Departments

### 3 From Your President's Desk

By Tom Fischer, CGCS

### 21 MGCSA Board Minutes

By Michael Brower

### 24 Membership Report

By Tom Meier

### 34 Editor's Corner

By Steve Shumansky



# HARTMAN

Est. 1972

**\*\*Sports Turf Specialists\*\***

- High Tech Drainage Techniques & Design
- Renovation & Landscaping
- Excavating & Grading

**Jeffrey L. Hartman**  
President

8011 Bavaria Rd., Victoria, MN 55386 • 612-443-2958 • Fax: (612) 443-3452



**DEACON'S LODGE** is located about one mile north of Breezy Point Resort and 15 miles north of Brainerd. With approximately 4,800 square feet on each floor, it offers a well-appointed lounge, dining area, pro shop, offices and a downstairs area for cart storage.

To get there go seven-tenths of a mile north of the Breezy Point Resort entrance on Highway 4 to Weaver Point Road, turn right and continue to golf course entrance at left.

## Environmentally and Player Friendly, Deacon's Lodge Opens for Public Play in Brainerd Lakes Area

*Arnold Palmer Course Finished a Month Ahead of Time*

By **RALPH TURTINEN**

Those involved in the design and construction of Deacon's Lodge, the new Arnold Palmer Signature golf course named after his late father, a former Pennsylvania golf superintendent, have good reason to be proud.

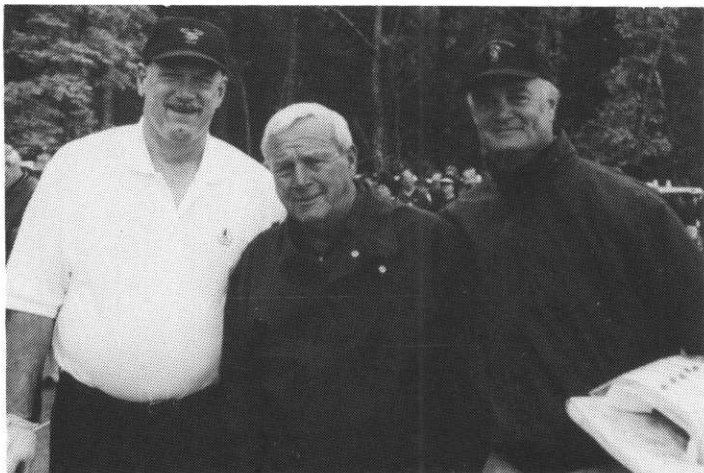
Not only did the resulting product take advantage of the spectacular Northwoods beauty on this 499-acre site in Breezy Point, about 15 miles north of Brainerd, but it also provides an appealing 18 holes that are both environmentally and player friendly.

Moreover, the project — developed by Sienna Corp. of Edina — was finished a month ahead of time to become a significant addition to Minnesota's golf image and the Brainerd Lakes well-earned reputation as a destination golf market.

As golf course superintendent, Scott Schunter was responsible for all aspects of the construction process, insuring quality control and assisting in decision-making while working closely with Erik Larsen, project architect for the Arnold Palmer design team, and Peter Loyd, project manager for Sienna Worldgolf, developer of Deacon's Lodge as well as Bearpath in Edina and the Tradition in LaQuinta, Calif.

"The main problem with a project of this size is dealing with the weather," said Schunter. "We had 16 inches of rain in June when we started to seed last year and, as a

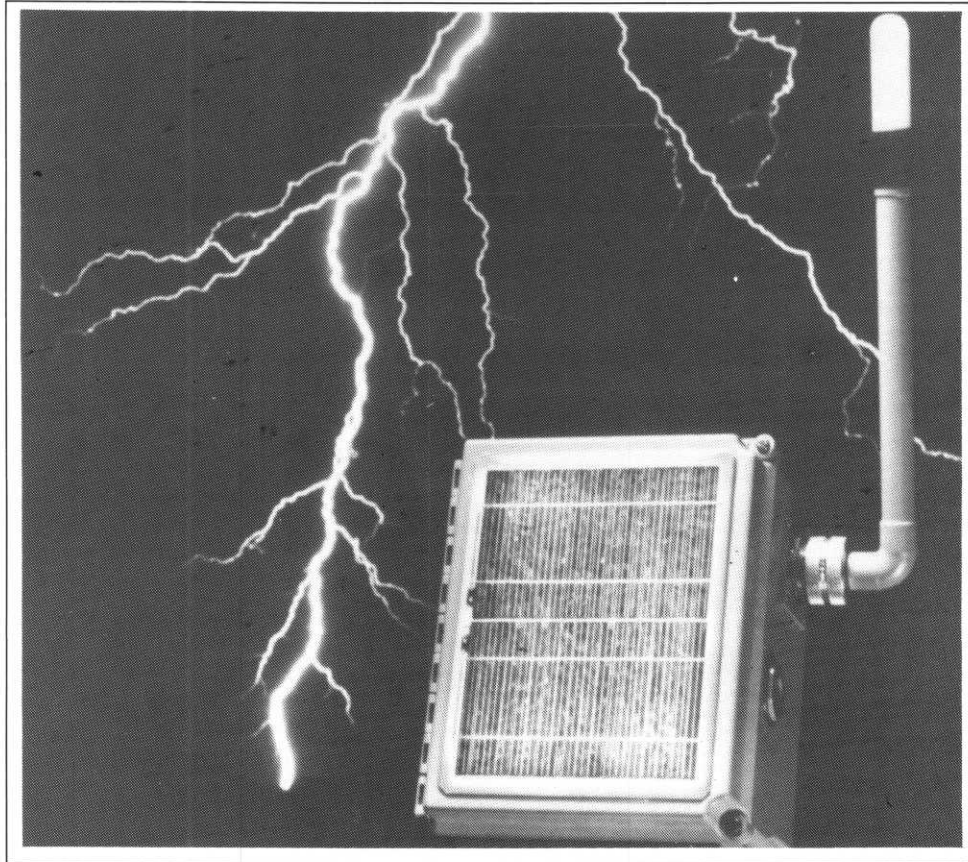
*(Continued on Page 7)*



**DEVELOPER JOHN HANKINSON** enjoys successful grand opening of Deacon's Lodge with celebrity guests Jesse Ventura and Arnold Palmer.

# ESID

ELECTRICAL STORM IDENTIFICATION DEVICE



Early warning of thunderstorm activity in your area is essential when you need to make critical decisions regarding personnel safety and the isolation of sensitive equipment. The **USGA, PGA**, and over 500 individual golf courses rely on **Global Atmospheric Inc.**, manufacturer of **ESID**.

**Renowned organizations such as NASA, Seaworld, the National Weather Service, the U.S. Military, American Airlines, MCI** and hundreds of customers in over 30 countries worldwide have chosen **Global Atmospheric** to meet their lightning warning, detection and information needs. This depth of experience is just one of the reasons that led **TORO**, the leading turf management organization in the world and **QPS**, manufacturer of the #1 golf course siren system, **COURSE ALERT**, to select **Global Atmospheric** to co-develop a product to meet the unique needs of their golfing customers, friends and associates.

That product is **ESID**

When you need . . .

- **100% Thunderstorm Detection Efficiency**
- **Complete Warning / System Shut-down Automation**
- **Zero False Alarms**
- **Highly Accurate Range Information**
- **Easy Installation**
- **Low Maintenance**
- **Patented State of the Art Technology**

. . . and the **confidence** of teaming up with the **World Leader** in lightning detection and location.

**MTI** DISTRIBUTING CO. **TORO**

Contact: **Dean Chaltas** at **612-475-2200** ext. 224  
14900 - 21st Avenue North, Plymouth, MN 55447

## Deacon's Lodge—

(Continued from Page 5)

result, we ended up seeding three fairways four or five times. As a preventive measure, we installed approximately 3,000 hay bales along with silt fence to prevent future major erosions."

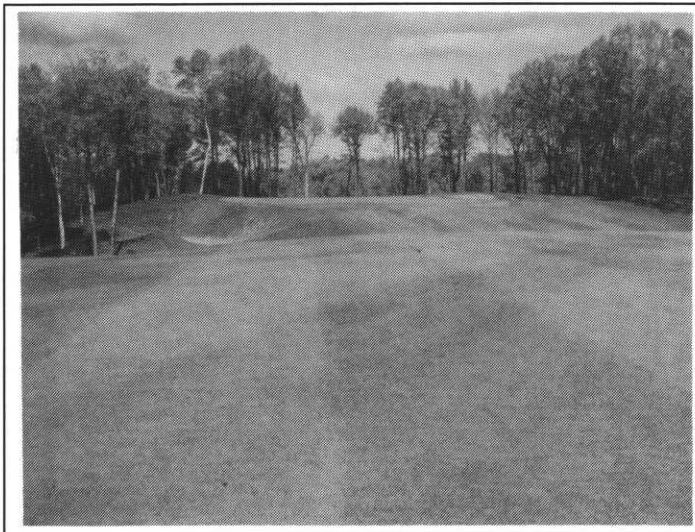
"Things never go as smoothly as you desire, so you have to be patient and do everything you possibly can when the weather is good," he said.

Considering the fact that clearing and grubbing didn't begin until September 23, 1997 and periodic spurts of rainfall periodically slowed the shaping of the course, the first rounds of golf were played by the owners exactly one year after preliminary construction had begun. In addition, the grand opening was conducted on May 31 this year, one month ahead of the original target date, and the course opened for full-time play on June 18.

"Basically, 1998 was a good growing season with the exception of that month of June," said Schunter, "and the Spring of 1999 wasn't so hot either. We had a cold, wet May — a month in which we had more than 11 inches with fairly cool temperatures."

Schunter's previous grow-in experience at Bearpath, as well as Blackwolf Run in Sheboygan, Wis., naturally was helpful at Deacon's Lodge.

"In ways Deacon's Lodge was easier," Schunter said, "but in other ways, it was more difficult due to the soil conditions and environment. At Deacon's the soil is basically pure sand to depths of approximately 170 feet, so this made

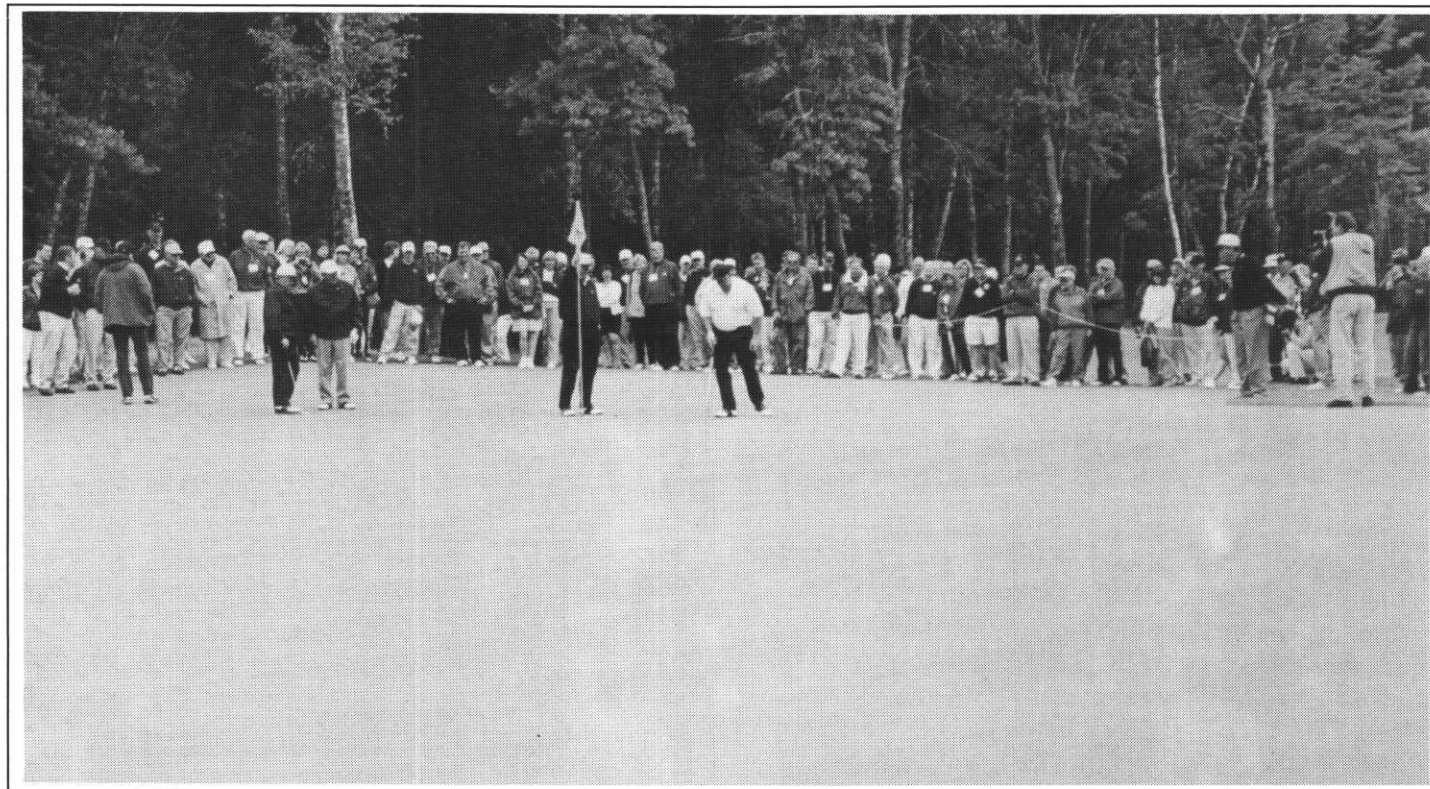


**LANDING AREAS OF FAIRWAYS** range from 45 to 75 yards in width. Waste bunkers are positioned to collect errant shots and protect balls from rolling into the trees or wetlands.

the construction aspects easier because all we did was clear the trees and brush, then shape the sand. With the drainage of the sand, we were able to shape and install irrigation with little or no delays due to weather.

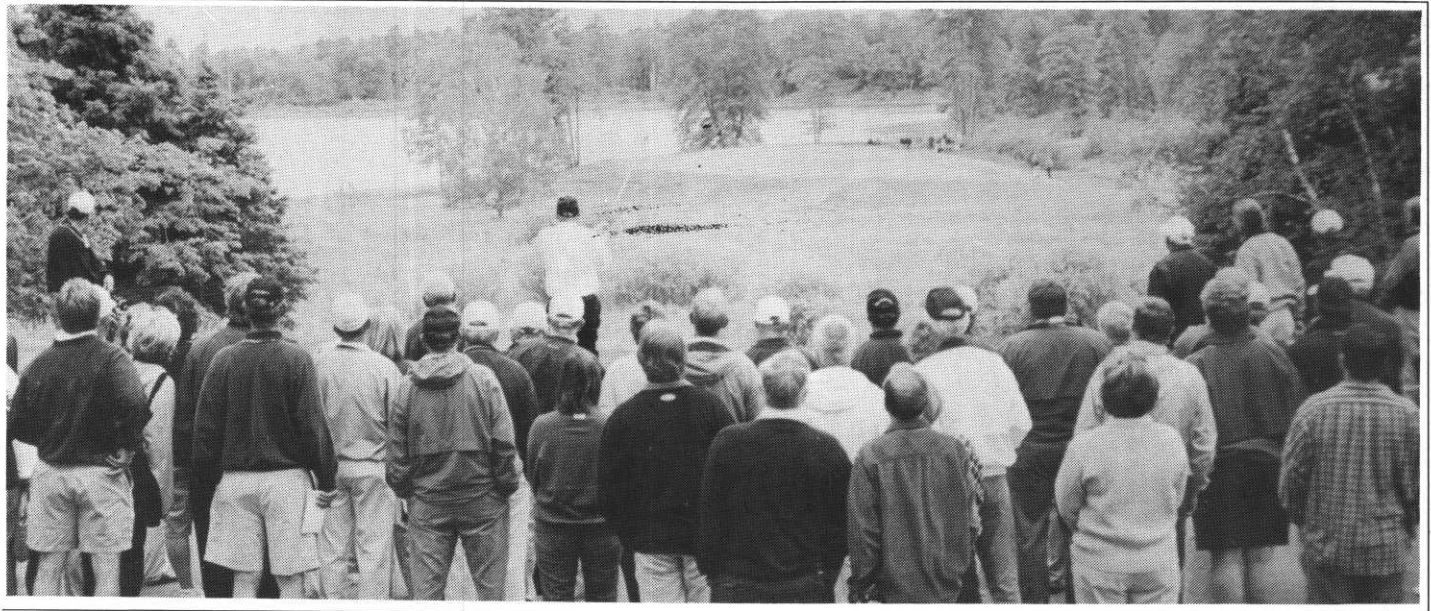
"At the same time, the soil structure made the seeding process more difficult in the fairways and rough because it was much tougher to move around with the tractors and seeders. The most difficult aspect was the two "100-year

(Continued on Page 8)



**HUGE GREENS**, which average 7,000 square feet, provide plenty of locations for hole placement. Above, the Grand Opening crowd

watches Gov. Jesse Ventura at right while course designer Arnold Palmer waits his turn to putt.



The attractive par 3 17th offers wetlands as a challenge, scenic water in the background for Gov. Ventura's tee shot.

## Deacon's Lodge—

(Continued from Page 7)

events" with the terrain and soil structure. These intense rains caused major washouts and re-seeding three holes up to five times."

## APPEALING DESIGN

The design of Deacon's Lodge, both for a player and a turf manager, appeals to Schunter for several reasons.

"Playability is enhanced by the fact that the course was built to contain a player's ball in the fairway as well as around the green," Schunter said. "The greens are built to give all levels of players a chance to run the ball onto the green, and the fairways are very generous, from 45 to 75 yards wide in the landing zones, and five sets of tee markers — again, for all levels of players."

From a superintendent's standpoint, proper maintenance is assisted by the use of waste areas to minimize turfed areas, large greens which allow many pin positions, very

(Continued on Page 9)

## The Tessman Company

Your Supplier For Growth



- Par Ex Fertilizer
- Spring Valley Fertilizer
- Liquid Growth Products
- Professional Course Blended Grass Seed
- Novartis
- Chipco
- Echo
- Dow Agri Sciences
- Bayer Chemical
- Riverdale Chemical

800-882-5704 • 651-487-3850 • F 651-487-3115



PETER LOYD, project manager for Sienna Corp., developer of Deacon's Lodge, noted with pride that Deacon's Lodge was completed one month ahead of schedule.

## Deacon's Lodge—

(Continued from Page 8)

large tee surfaces to help the staff maintain good tees and the large fairways that minimize rough.

With its five sets of tees, Deacon's Lodge plays to 6,964 yards from the King (back) tees to 4,766 from the forward tees, named Winnie after Arnold's wife. In between are Palmer, 6,541 yards; Deacon, 6,067, and Lodge, 5,364. The course ratings and slopes range from 67.6/114 to 73.8/128. Par is 72.

Three natural lakes are on the property and several deep wilderness wetlands are on a 170-foot deep layer of glacial sand. Norway and White Pines, Birch, Oak, Basswood and Aspen are found throughout the terrain which offers a variety of elevation changes that provide panoramic views across the large wetlands and lakes. The property is off the Northwest shore of Big Pelican Lake, approximately midway between Gull Lake and the Whitefish Chain about 145 miles north of the Twin Cities.

Designed to be environmentally friendly, the golf course does not disturb any wetlands or lakes. Natural elevations were used to minimize earthmoving and to utilize the sand subsurface to create vast natural areas. In addition, care was taken to carry the terrain of the tree lines into the playing area to create a natural flow to the golf course.

By utilizing the entire 499 acres, each hole has its own identity and isolation. The majority of teeing areas are on the elevated ridges, and many of the landing areas are designed with slopes to provide 30 to 40 yards of additional roll. Greens average 7,000 square feet and blend into the existing terrain, many bordering lakes and wetlands with sculptured white, sand-flashed bunkers.

(Continued on Page 11)



Arnie and Scott

## U.S. Open, Working On Nicklaus and Palmer Courses Made Decade Of '90s Interesting For Scott Schunter

The final decade of the 20th Century certainly has provided some interesting experiences for Scott Schunter, 36-year-old golf superintendent at the new Deacon's Lodge course in Breezy Point Township north of Brainerd.

Among them was helping to prepare Hazeltine National for the 1991 U.S. Open in Chaska, getting the opportunity to grow-in Bearpath, a Jack Nicklaus course in Edina, and overseeing all aspects of the construction process at Deacon's Lodge, designed by Arnold Palmer.

Scott began playing the game as a 16-year-old in De Witt, Iowa, where his dad was an avid golfer and had a family membership in a local club. He played both high school and community college golf, was active in the Future Farmers of America and then earned his Bachelor of Science degree at Iowa State University, a school well-noted for its agronomy program and its emphasis on turf management.

Scott became interested in golf course work "when I was about 20. It was as close as I could get to farming and, at the same time, still be able to make a living."

From 1985 to 1988 he worked as a laborer and did general maintenance work as well as pesticide and fertilizer applications at Cedar Rapids Country Club in Cedar Rapids, Iowa.

In 1989 he became a foreman at Blackwolf Run in Sheboygan, Wis., then was an assistant superintendent from 1990-94 at Hazeltine where he supervised crews and helped prepare the course for the 1991 Open.

The next four years were at Bearpath, the Jack Nicklaus course in Edina, where he assisted in construction of the course and routine maintenance.

Then Scott officially started in March, 1998 at Deacon's Lodge, developed by Sienna Corp. which also developed Bearpath, although he was involved at the Breezy Point course in the fall of 1997 during the clearing and rough shaping as well as irrigation design and decision.



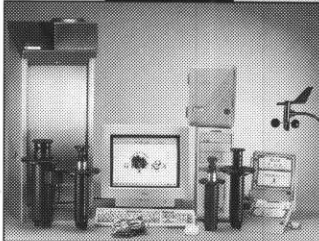
**PREPARING THE WALKWAY** to the front of the clubhouse before the application of asphalt, a workman smooths the path with his front-end loader.



# A Successful Season... Starts with Century Golf Course Services



Century offers the complete line of Legacy Golf products to help you control water, labor and energy costs. Featuring Legacy rotors, valves, Genesis central satellite and Viking decoder control systems.

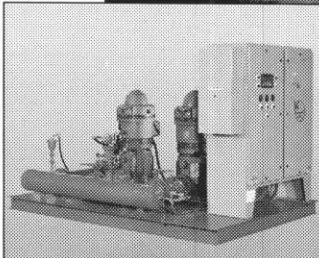


## Legacy Golf System



## SyncroFlo, Inc.

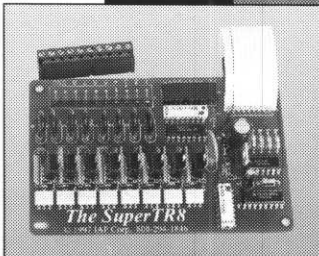
Efficient and economical, SyncroFlo pumping stations are the solution to many golf course irrigation problems.



## SyncroFlo Eagle Pumps

## BoardTronics™

Repair or upgrade your Rain Bird or Toro golf controllers. Replacement boards can be shipped from the Century National Service Center within 24 hours. Call 888-855-9132.



## Controller Board Repairs



Improve water quality with an aerating fountain, or create water features from existing golf course streams and ponds.



## Aqua Master Fountains



# CENTURY RAIN AID

## Sprinklers • Valves • Controllers • Pump Stations Controller Board Repairs • Fountains

An inviting, well-maintained course means challenging play...and a profitable season. As a golf superintendent, you can achieve this success with Century Golf Course Services. Century's team of professionals can help you solve irrigation or drainage problems and show you what's new in clubhouse lighting, water features and more. Call today for a free catalog and on-site consultation.

**800-347-4272**

[www.rainaid.com](http://www.rainaid.com)

CENTURY GOLF PROFESSIONALS ♦ MINNESOTA

> DON CHELMO ☎ 612-509-9290

> JOHN MARKESTAD ☎ 608-742-0377