



RIGHT THEN



RIGHT NOW



The Next Generation Cushman® Turf-Truckster®

In 1964, we created the world's first Cushman Turf-Truckster...and a whole new class of vehicles. Imitators soon followed. But none with the same soul. The new Cushman Turf-Truckster features a truckload of improvements including the only fully automatic transmission in a heavy duty work vehicle. With the same rugged dependability as the original, the Turf-Truckster remains, as it began, in a class by itself. Call **612-333-3487** and drive the new Turf-Truckster today!

CUSHMAN

E-Z-GO

RANSOMES

RYAN

CUSHMAN

CUSHMAN MOTOR CO., INC.

TEXTRON

2909 E. FRANKLIN AVE., MINNEAPOLIS, MN 55406 • (612) 333-3487 • TOLL FREE: 1-800-759-5343 • FAX: (612) 333-5903

TURF CARE AND SPECIALTY PRODUCTS

HOLE NOTES

Official Publication
of the
Minnesota Golf Course
Superintendents' Association

1998 MGCSA BOARD OF DIRECTORS

Officers

President Tom Fischer, CGCS
Edinburgh USA
612/315-8575 • Fax: 612/315-8585

Vice-President Pat Walton, CGCS
Rolling Green CC
612/478-2179 • Fax: 612/478-6025

Secretary Mike Brower
Hillcrest Country Club
651/777-5186 • Fax: 651/777-7463

Treasurer Rob Panuska
Waseca Lakeside Club
507/835-2574 • Fax: 507/835-3472

Ex-Officio Jim Nicol, CGCS
Hazeltine National GC
612/448-3626 • Fax: 612/448-1726

Directors

Jeff Churchill North Star Turf Supply
800/592-9513 • Fax: 612/484-8257

Paul Eckholm, CGCS... Heritage Links GC
612/440-6494

Rick Fredericksen, CGCS Woodhill CC
612/473-5811 • Fax: 612/473-0113

Jim Johnson, CGCS Rich Spring GC
320/685-4322 • Fax: 320/685-3461

Mike Klatte, CGCS Elm Creek GL
612/478-8592

Tom Meier Worthington CC
507/376-9250 • Fax: 507/372-2547

John Queensland Cedar River CC
507/582-3595 • Fax: 507/582-3133

Steve Shumansky Perham Lakeside CC
218/346-6071

Bob Simondet Lesco Inc.
320/327-2929 • Fax: 320/327-2929

EDITOR

Steve Shumansky
E-mail: plcc@eot.com

Editorial and Business Office

Scott Turtinen, Executive Director
Minnesota Golf Course
Superintendents' Association
240 Minnetonka Avenue South/P.O. Box 617
Wayzata, Minnesota 55391-1617
Tel: 612/473-0557 • Fax: 612/473-0576
Toll Free: 800-642-7227
E-mail: MGCSA@aol.com



FROM YOUR PRESIDENT'S DESK

Despite 15-Inch Snowstorm, 130 MGCSA Members Attended Mini-Seminar



In April, the MGCSA's Committee Chairmen will submit budgets for the Board of Directors to review. Based on that information, we will determine whether an increase in dues is necessary. The last time dues were raised was approximately nine years ago. The purpose of this was to support an Executive Director and keep solicitation to Affiliate Members to a minimum.

Over the past nine years costs have risen slowly and with the addition of new members, our revenues have kept ahead of our expenditures. The budget projections during the last few years have either broke even or have realized a small profit. Therefore, if the Association desires to expand into public relations or in other areas, we may be required to increase dues to fund new programs. We will continue to keep everyone informed of our decisions in the coming months.

* * * *

I would like to thank Mike Brower for the fine job he did in organizing the March Mini-Seminar. One-hundred-forty people pre-registered for this event, which was significantly better than the year before. The only thing Mike did not count on was the storm that dumped 15 inches of snow on the Twin Cities. Despite the snow, we had 130 in attendance. They enjoyed an excellent presentation by Gordon Witteveen and Mike Bavier. Their topic was *Practical Golf Course Maintenance (The Magic of Greenskeeping)*. It covered all aspects of golf course maintenance. This is an excellent seminar for assistant golf pros and club managers to help them understand the Superintendent's role in the care of the golf course. These two men have written a book depicting the common sense, day-to-day art of greenkeeping which can be purchased through the GCSAA's book store.

* * * *

Hope to see a good turnout at our first meeting on May 10 at Hillcrest Country Club in St. Paul.

— Tom Fischer, CGCS
MGCSA President

 Williams-Gill & Associates Golf Course Architects	Office (715) 425-9511
	Facsimile (715) 425-2962
	E-mail golfwga@presenter.com
Garrett Gill, Principal	Williams, Gill of Wisconsin 122 N. 2nd St. River Falls, WI 54022

- Services •
- New Course Design
- Master Plans
- Golf Practice Center Design
- Environmental Planning
- Irrigation Design
- Renovation & Restoration
- Site Planning

HOLE NOTES (ISSN 108-27994) is published monthly except bi-monthly December/January, February/March for \$2 an issue or \$20 per year by the Minnesota Golf Course Superintendents Association, 240 Minnetonka Avenue South, Wayzata, MN 55391-1617. Scott Turtinen, Publisher. Periodicals postage paid at Wayzata, MN. POSTMASTER: Send address changes to HOLE NOTES, 240 Minnetonka Avenue South, Wayzata, MN 55391-1617.

Inside This Issue of Hole Notes

- 5 Charles Erickson**
By Jack Kolb
- 11 MGCSA Makes \$7,000 Available for Scholarships**
By John Queensland
- 15 March Mini-Seminar Recap**
By Mike Brower
- 17 Plan to Participate In MTGF Events This Summer**
By Bob Mugaas
- 18 Fairway Foundation Kids Find Fun in Work**
- 23 The Truth & Consequences Of Fast Greens – GCSAA**
- 26 Why You Should Start Saving For Your Retirement – GCSAA**
- 27 Let's Be Realistic!**
By Brian Maloy, USGA Green Section
- 30 Waste Pesticide Collections In 1999** By Joe Spitzmueller
- 31 Local Recertification Workshops This Spring**
- 32 Why Aerify – GCSAA**

- 3 From Your President's Desk** By Tom Fischer, CGCS
- 24 Membership Report**
By Tom Meier
- 24 Affiliate News**
- 38 Editor's Corner**
By Steve Shumansky

Advertisers

Aerway	7
Century Rain Aid	16
Classified Ads	13
Continental Golf	6
Country Club Turf	35
Cushman Motor Co.	IFC
Double Eagle Golf Construction	36
Duininck Bros, Inc.	BC
Glenn Rehbein Companies	18
Grove Nursery	33
Hartman	4
Herfort-Norby	32
Leitner Company	31
Lesco	24
Minnesota Golf Cars	15
Monson Consulting	34
MTI Distributing Co.	10
MTI Distributing Co.	20
MTI Distributing Co.	21
North Star Turf Supply	IBC
North Star Turf Supply	22
Par Aide	11
Paskvan Consulting	8
Paskvan Consulting	38
P&H Warehouse	14
P&H Warehouse	19
PBI-Gordon	26
Peterson Seed	23
Plaisted Companies	37
Polfus Implement	8
Precision Turf & Chemical, Inc.	29
Princo	34
Rhone-Poulenc	36
Tee Shot Marketing	27
Tessman Company	28
Williams & Gill	3
Zeneca	12

1999 MGCSA MONTHLY MEETINGS

MAY 10

Hillcrest Country Club

Host: Mike Brower

JUNE 7

Benson Golf Club

Host: Dave Sime

JULY 12

Izaty's Golf & Yacht Club

Host: Steve Schumacher, CGCS

AUGUST 12

Heritage Links Golf Club

Host: E. Paul Eckholm, CGCS

SEPTEMBER 12

Cragun's Resort

Host: Tom Kientzle, CGCS

OCTOBER 11

Albion Ridges

Host: Brooks Ellingson

DECEMBER 8, 9 & 10

MGCSA Annual Meeting/MTGF Conference

Minneapolis Convention Center

HARTMAN

Est. 1972

****Sports Turf Specialists****

- High Tech Drainage Techniques & Design
- Renovation
- Landscaping
- Excavating & Grading

Jeffrey L. Hartman
President

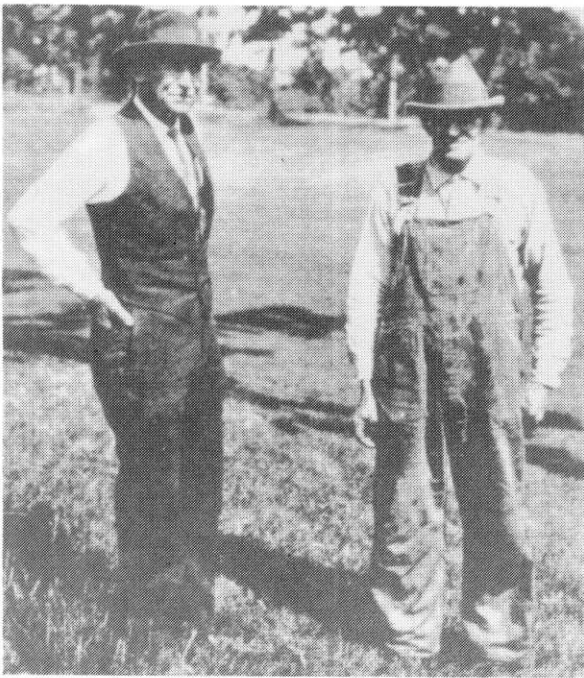
8011 Bavaria Rd., Victoria, MN 55386 • 612-443-2958 • Fax: (612) 443-3452

Charles Erickson

Father of Minnesota Golf Course Superintendents' Association

By **JACK KOLB**
MGCSA Life Member

One hundred years ago Charles Erickson was hired from the Minneapolis Park Board to become the head greenkeeper at The Minikahda Club (1899). He was approximately 35 years of age when he began his tenure at Minikahda and there is little or no history on his expertise or employment with the Park Board. He was affectionately known as the "General" by the club membership. By July 15 of that same year Charlie had completed the first nine holes at Minikahda and an appropriate ceremony was performed as the first ball was driven from the number one tee by the club president.



Charles "General" Erickson and Gust Olson

Charlie's work at Minikahda was a pioneering adventure. There were no consultants, a very small contingent of other Greenkeepers to commiserate with and no agronomically educated salesmen. His philosophy then would be to recognize and solve problems "In House." Charlie Erickson apparently was able to do just that. His able assistant was a gentleman by the name of Gust Olson. In interviewing the few surviving persons that knew Charlie Erickson personally, it was thought that Gust Olson was an expert agronomist in his own right. So they probably complimented each other.

Time makes it difficult to learn an awful lot about Charlie Erickson but this writer was fortunate enough to have been associated with a number of his crew. It is through them that I am attempting to bring to you some of the stories that were told about this gentleman. When I arrived at Minikahda there were three former employees who had worked under the Erickson regime. These were Ray Hill, Idon Haugen and Ludwid Nelson. Ludwid and Idon each became succeeding Greenkeepers at Minikahda.

Ray Hill had begun work at Minikahda in 1920 soon after the Club had gone to 18 holes. Ray had been the only fairway cutter from 1920 until he died in 1958. He was able to tell me many of the innovations and inventions that had taken place at Minikahda during those years. He had snapshots and photographs of the "Bull Tractor," or first gas device had the mowers replacing the front wheels of the unit. Today that would not be a problem, especially with welded frames and hydraulic pistons to steer and maneuver the beast. But as Ray described it, the framework was heavy and crude, with cables, pulleys and a very high leverage steering ratio. Before this (1920) the fairways were mowed with "horse" drawn mowers.

Since the term "Horse" has been mentioned, it is interesting to note how Charlie Erickson utilized (in somewhat European fashion) the dietary waste of a horse. For those who are familiar with the layout at Minikahda, the horses (six) were stabled in a barn between No. 14 and No. 10 fairways. This area was also directly behind No. 13 green. On the backside of the hill leading down to the 13th green was a large cistern into which the wet-waste and horse urine was conducted. Charlie made his own fertilizer in those early days. Material from the cistern was put into a large "cooperage" barrel (mounted on steel wheels) and with the aid of a diaphragm pump the material was sprayed onto the greens. The wooden cooperage barrel was still at Minikahda in 1966.

Richard Knudson, as a child, lived in a home situated within Minikahda grounds and worked for Charlie Erickson as a high-school student. These are some thoughts that he was able to pass on to me:

"I remember a farmer would come with horse drawn wagons loaded with manure. The manure, sand and other soil were left to compost and mature. When the pile was ready to sift it always seemed to be on a hot day. But, plenty of beer and water was available to quaff our thirst."

(Continued on Page 7)

CONTINENTAL GOLF TURF SERVICES

The 1999 golf season is getting closer. Now is the time to reserve your custom Hydroject 3000, Liquid Wetting Agent and/or Soil Reliever Deep Tine Aerification applications for the summer.

THE HYDROJECT 3000

The Hydroject 3000 water injection aerator is one of the essential tools golf superintendents have in helping to maintain healthy turf throughout the growing season. High velocity water injection penetrates 4 to 8 inches and laterally fractures soil layers. This type of penetration improves water uptake and advances root growth that gives you a more stress tolerant turf. With the Hydroject 3000 we can aerate your greens or other turf areas when they need it most; just days before a tournament or under a hot stressful sun. Hydroject 3000 smoothes greens as well. You will have a more uniform putting surface while keeping the same height of cut; you can even increase green speeds 10 to 15 per cent.

A NEW OFFER - LIQUID WETTING AGENT

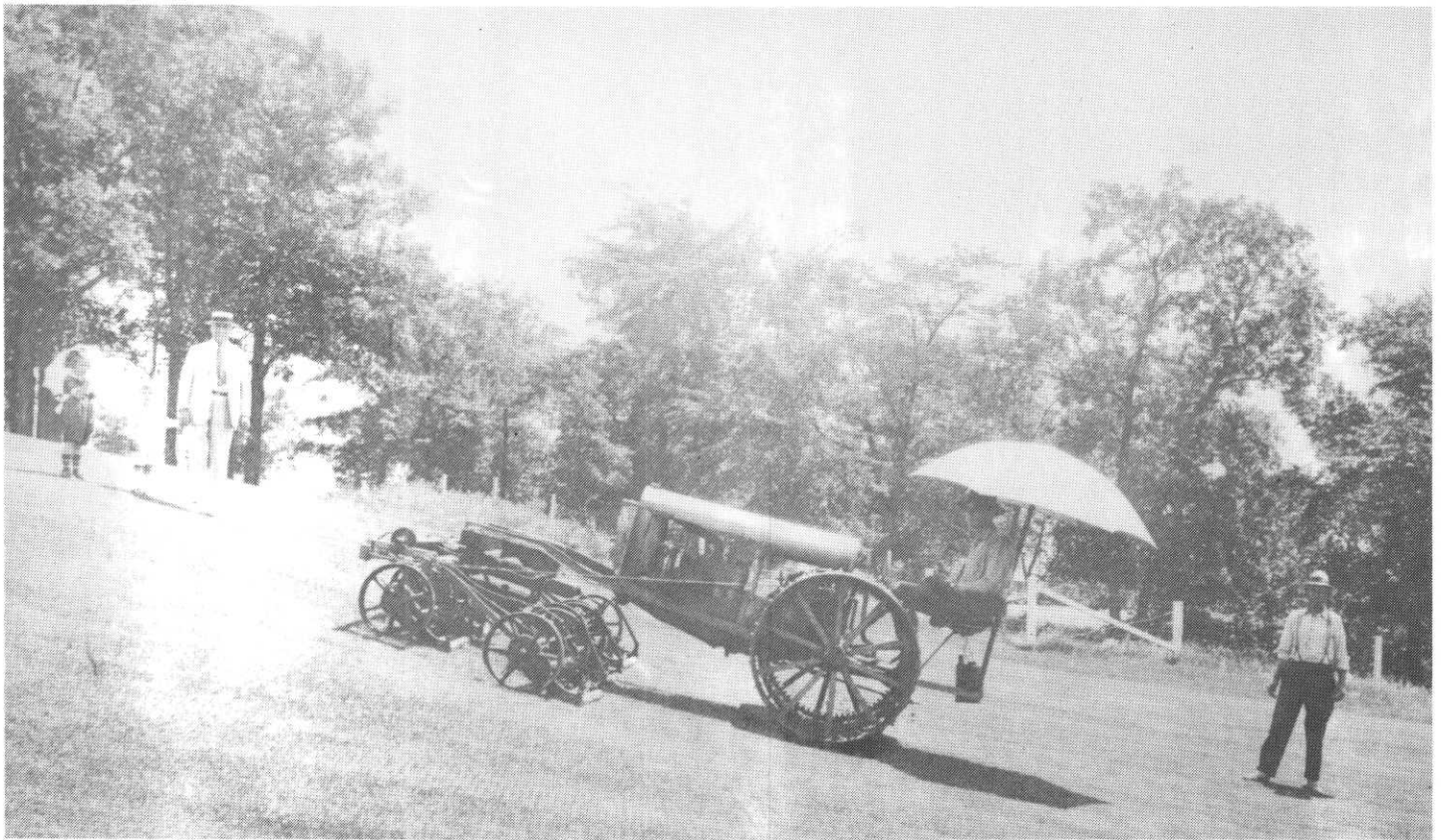
Wetting agents have been used to maintain healthy turf by improving the efficiency of water use along with other products you apply during the growing season. In the past, wetting agents ran through the hydroject in the form of a dissolvable tablet. Now it can be applied at varying strengths in a liquid form so we can apply the amount you desire. We can use your wetting agent or we will supply the wetting agent.

SOIL RELIEVER DEEP TINE AERIFICATION SERVICE

The combination of greater water usage, heavier equipment and increased foot traffic results in deeper compacted soils. When poor drainage symptoms occur due to compaction, cultivation practices should be increased. Plants require oxygen to grow. By relieving compaction with the Soil Reliever, you will have a root system down to the depth you aerify. With deeper roots you get more wear tolerance with less stress, therefore a healthier turf grass. Our Soil Reliever can use a solid or coring tine at depths for 8" to 12" and diameters of tines from 1/2" to 1 inch. The hole spacing can be from 3" to 5". We provide 1 set of tines, the tractor, the Soil Reliever and the operator, or we can deliver it without the operator and provide instructions on how to operate the Soil Reliever so you can rent it over a period of days. The prices vary with or without an operator and will be determined by the square footage of the area contracted.

Please contact Jerry Webb at Prestwick GC for prices and scheduling on the dates you desire.

651-459-0288 or FAX 651-458-9175



In 1920, the first gas-powered mowing unit appeared on Minikahda grounds. Sam Clapper, owner of the Bull Tractor Company (eventually Toro) and Minikahda member W.A. Brooks collaborated to develop this prototype fairway mower.

Charles Erickson—

(Continued from Page 5)

Richard Knudson also passed along this observation:

“My remembrance of Charlie is that he always wore a hat, tie, suspenders along with a jacket or vest.”

All the pictures that we have seen of him bear this out. To further understand the character of the man, Richard goes on to say “When Charlie was in his 70s he would stand on his head to show he was in good shape and I believe to show off in front of the young ladies.”

Charlie Erickson developed an irrigation system early in his tenure. He is given credit for the first golf course irrigation system in the U.S. (by Minikahda records). The system consisted of a series of 4-inch pipe mounted on two-wheeled carriages. Each carriage was located at a 16-20 foot section of the line and from what we can gather from pictures looked like it would be 80 to 100 feet long. Actually they look and were similar to modern center pivot agricultural irrigation systems. How the water was delivered to the piping is not detailed. The apparatus nicknamed “The Sea Serpent” was moved from one location to the next by horses.

Erickson had arbor-savvy as well as turf. Many of the large trees at Minikahda had large cavities discretely filled with concrete, cabling of weak crotches and weep-pipes. I recall standing next to a large elm one day as a storm front moved in. Suddenly there was a stream of water flowing

(Continued on Page 9)



**Aerate 18 greens in 3 hours
without disrupting play**
or an average fairway in about 2 hours

For greens and tees, AerWay's new tow-behind Greens Aerator penetrates 6" without cores, and won't disrupt play.

The roller leaves greens instantly playable. AerWay lets you aerate whenever you want, for better turf conditions, and happier golfers.

For fairways and roughs, patented AerWay 200 Series Shatter Tines relieve compaction 7" and deeper. Recovery is fast: a mowing pass the opposite direction and you're ready for play. No complex machinery. No cores. No PTO. Take a look at AerWay today.

AerWay®

Turf aeration easy enough to do today

1-800-457-8310

E-Mail: aerway@oxford.net

AerWay is manufactured by the Holland Group of companies.

Analytical Services By:



Paskvan Consulting
Route 1, Box 77A
Akeley, MN 56433
218-652-3542 Office
218-652-2949 Fax
paskvanconsulting@unitelc.com

"Where Success is Never an Accident"

Specialists in Soil & Plant Nutrition
Tailored to Golf Courses and Sports Turf

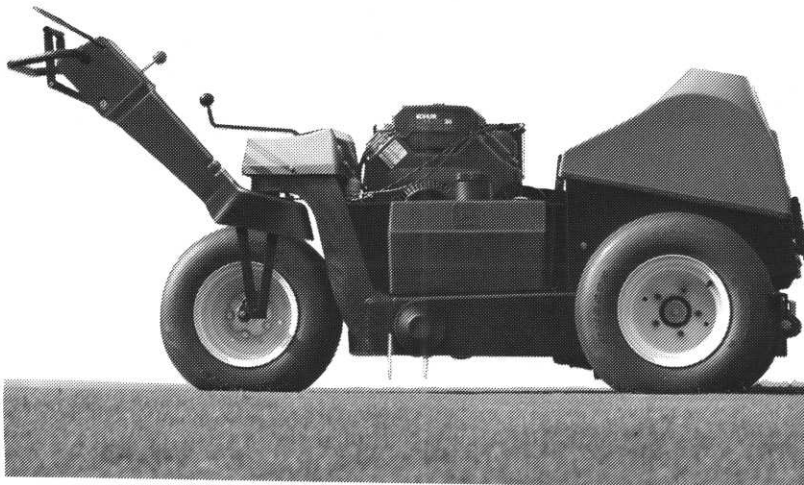
We provide the following services:

- Complete inventory of the soils on the course or job site
- Sampling, Analysis, Delivery and Interpretation of the results to save you money
- Recommend corrective fertilizer materials to save you money
- Physical analysis on sand-soil-peat to determine proper mixing for greens and topdressing
- Irrigation quality analysis
- First lab in the country A2LA accredited under the new USGA guidelines for new greens construction
- Fast turn around time, yet quality is never compromised



Catherine and Milton Wiley relax during the hospitality night in Orlando at the National Conference in February.

Aercore™ 800



ADD VERSATILITY WITH:

Window attachment
Mini tine kit

FEATURES:

Very good hole quality.
Adjustable depth control down to 4 inches.
Very productive 32-inch coring swath.
Four-speed transmission covers a large variety of coring needs:
1st gear: mini tines 2x1.4 inch pattern
2nd gear: 2x2 inch pattern
3rd gear: 2x2.6 inch pattern
4th gear: 2x3 inch pattern

A wide variety of tines available to meet the varied needs of turf professionals.

Tubular tines are available in 3/8-inch, 1/2-inch, and 5/8-inch; open sided in 1/4-inch, and solid in 1/4-inch and 5/8-inch.

Same Flexi-link mechanism as used on the larger-frame aerators.

Simple design with fewer moving parts.

Easy to service thanks to excellent access to moving parts.

Two year warranty.



Polfus Golf & Turf

12040 Point Douglas Drive S.
Hastings, MN 55033

Phone: (612) 437-7747

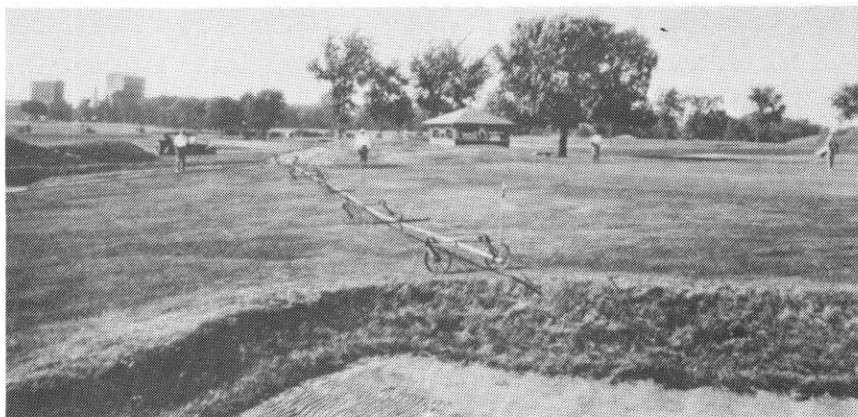
Fax: (612) 437-3483

Charles Erickson—

(Continued from Page 7)

from the weep-pipe, apparently caused by the sudden change of air pressure. When removing a storm damaged tree, much caution had to be exercised in the use of power saws for fear of the hardware that could be present. To this day dark bands can be seen around many of the trees. To keep leaf eating caterpillars from climbing up the trees, a treatment was devised which involved “rasping a smooth band” around the tree trunk and then applying a “sticky matrix” within this band. This formed a barrier in the worms journey up the trunk. Unfortunately, when there was a heavy infestation, the worms would soon build a bridge of immobilized bodies with safe passage for others to crawl over. Modern insecticides abolished the practice.

Charlie Erickson was instrumental in changing many of the golf courses in Minnesota from sand greens to bentgrass. One of the documented cases was Montevideo Country Club. Ray Hill, a 37-year employee, related the story about collecting many bushels of bentgrass stolons which Charlie grew along the creek bank on No. 8 fairway of Minikahda. After work on a particular evening they (Charlie, a waitress from the clubhouse and Ray) headed for Montevideo to plant the Montevideo greens. Maynard Erickson (MGCSA Life Member — no relation) has stated



Charles Erickson's 'Sea Serpent' according to Minikahda history buffs, was the first golf course irrigation system in the United States.

that Charlie was responsible for most of the sand green conversion to bentgrass in this area.

Charlie Erickson was the first president of what is now called “Minnesota Golf Course Superintendents’ Association” and was very active in its formation. A memorial plaque in honor of him was presented to “The Minikahda Club” by the “Minnesota Greenkeepers Assn.” and resides in a prominent position on the course.

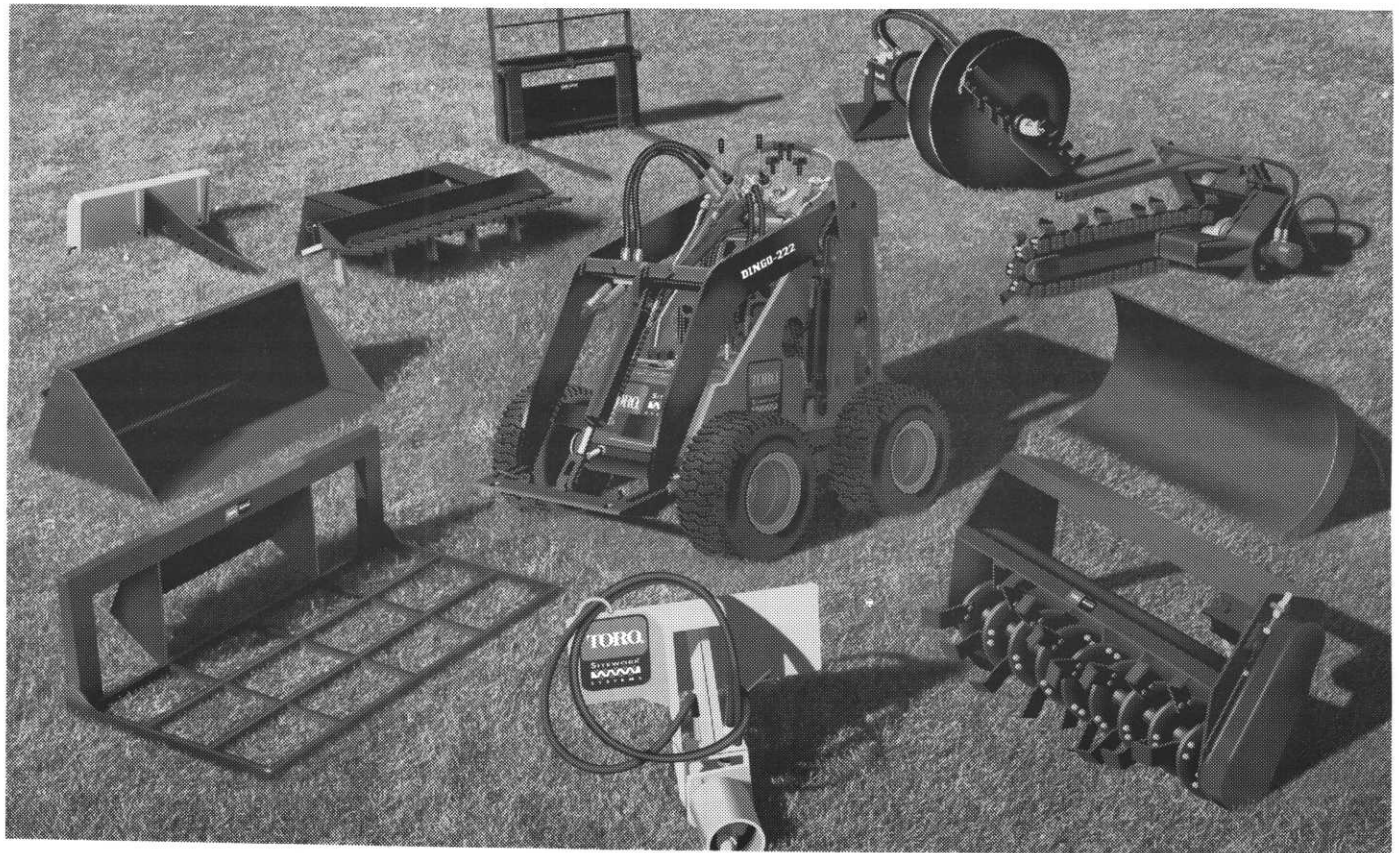
Charlie Erickson suffered a broken hip and other injuries in a fall down the “Minikahda tool-house basement steps.” He died from other causes one year later just short of his 78th birth date in 1942.

— Jack Kolb



Left to right in back row: **Emile Cerise** (Emile installed the first underground irrigation system at Minikahda); **Ray Hill** (a 37-year employee who mowed fairways from 1920-58); **Ludwig Nelson** (eventually became greenkeeper at Minikahada 1950-52); **Robert Taylor** (head golf pro 1902-45); **Emile Anderson** (clubhouse engineer); **Charles Erickson** (greenkeeper 1899-1942); **Irvin Johnson**; **Burt Solender** (locker room attendant), and **Art Knudson** (course ranger and starter).

Meet Your Newest Employee



For a third of the cost of hand labor*, you can put the Toro® Sitework™ Systems product line to work for you. The cornerstone of the Sitework Systems line is the Dingo® compact utility loader, a 41-inch wide versatile machine that powers over 30 available attachments. It also comes fully loaded with 3000 psi of hydraulic power to haul, till, trench, plant, dig, drag and drill. This combination of power and versatility, in a machine that can fit through a 48-inch gate while being gentle on existing landscapes, allows you to do an endless number of jobs in spaces previously accessible only by hand labor.



Visit Toro on the World Wide Web at www.toro.com

*This is only an example. Your results may vary according to actual conditions and specific system employed.
©1998 The Toro Company. All Rights Reserved.

MTI DISTRIBUTING CO. 

14900 - 21st Ave. No.
Plymouth, Minnesota 55447-4655
(612) 475-2200

1-800-362-3665