

Profits: You Can Have It All



- Completely modular, expands from eight to 48 stations
- Retrofits existing satellites without adding wires or altering hardware
- Operates from any location via remote control
- Motorola quality and radio expertise

EMERGENCY AFTER HOURS IRRIGATION SERVICE

Call 612-475-2200, Ext. 302 or
1-800-362-3665, Ext. 302

(For service during regular business hours,
8:00 am – 4:30 pm, Monday – Friday,
call John Artus at the above numbers,
but use ext. 205)



PICTURE-PERFECT IRRIGATION CONTROL

*SitePro is irrigation management
for the 21st century.*

- Incredibly flexible
- Incredibly accurate
- Incredibly powerful

PREDICTABLY TORO
Call for a product demo

MTI DISTRIBUTING CO.

TORO

14900 21st Avenue North • Plymouth, MN 55447
612-475-2200 • 800-362-3665

4310 Main Avenue • Fargo, ND 58103
701-281-0775 • 800-782-1031

When you need **Top Dressing Material...**



you need Plaisted.

Plaisted Companies is the one call for all your golf course materials, including top dressing blends to meet your most demanding specifications.



**Plaisted
Companies**
INCORPORATED

P.O. Box 332 • 11555 205th Avenue N.W. • Elk River, MN 55330

612-441-1100

Construction Materials • Top Dressing Blends • Bunker Sand • Carpath Aggregate • Drantile & Decorative Rock

Photo courtesy of Burian Photography®



David Kirscht, David Kirscht & Associates



Mike Lind, North Links Golf Club



Chuck Schoenrock, The Wilds Golf Club



Grayling Ihle, Minn-Iowa Golf Club

Analytical Services By:



Paskvan Consulting
 Route 1 Box 77A
 Akeley, MN 56433
 218-652-3542 Office
 218-652-2949 Fax
paskcons@mega-com.com e-mail

“Where Success is never an accident”

WWW.mega-com.com/soils

Specialists in Soil & Plant Nutrition
 Tailored to Golf Courses and Sports Turf

We provide the following services:

- Complete inventory of the soils on the course or job site
- Sampling, Analysis, Delivery and Interpretation of the results to save you money
- Recommend corrective fertilizer materials to save you money
- Physical analysis on sand-soil-peat to determine proper mixing for greens and topdressing
- Irrigation quality analysis
- First lab in the country A2LA accredited under the new USGA guidelines for new greens construction
- Fast turn around time, yet quality is never compromised

**We can tell you
 what to plant,
 where to plant,
 when to plant.**

**Guess that makes us
 plant managers.**

Whatever your needs for your golf course, Peterson Seed can help. They can supply grass seed for everything from tees and greens to fairways and roughs. Whether you're building a new course or renovating an existing one, Peterson Seed offers expert advice and dependable products.

TURF SEED



PETERSON SEED CO
Helping your seed business grow.

1-800-328-5898

©1997 Peterson Seed Company, Inc.

Golf Boom—

(Continued from Page 17)

a few wood shots north of Breezy Point.

What adds special sizzle is that nationally-recognized golf architects have become involved in the golf boom, such as Arnold Palmer at Deacon's Lodge, the 18-hole course named after his father and scheduled to open in 1999; Robert Trent Jones, Jr., designer of the 45-hole complex at Cragun's slated for full completion next year; former touring pros Joel Goldstrand at The Pines and Mike Morley at The Preserve, and George Harbottle, formerly on the staff of Pete Dye at Izaty's where nine more holes will be added to the present 18 this fall and nine more next year.

Meantime, several area courses have begun a variety of improvements on their courses, such as the new clubhouse at Ruttger's which this year is celebrating its 100th year as a resort at Bay Lake.

Crosswoods at Crosslake now has a new championship nine and new clubhouse added to its executive nine while The Vintage at Staples recently completed a major reshaping of 13 of 18 holes, added three miles of hard-surfaced cart paths and a completely remodeled clubhouse.

Irish Hills has added a new nine and is doing more remodeling in Jenkins while Whitefish Golf Club, now in its 30th year, is making good use of its new clubhouse and several renovated holes at Ideal Corners.

Pine Meadows has been upgrading its course in Brainerd for several years and, similarly, Fiddlestix at Isle has shown considerable progress since it became 18 holes four years ago.

Variety of Courses Appeal To Many Visitors

Indeed, the nationally-recognized courses have begun attracting more players from throughout Minnesota as well as bordering states and Canadian provinces as well as those a bit farther south like Illinois, Kansas, Nebraska and Oklahoma where several summer Lake residents have encouraged friends to enjoy what Central Minnesota has to offer.

Moreover, what appeals to many visitors are the several modestly-priced courses where beginners and youngsters can play within 20 minutes from the designer layouts. In addition, virtually every course has a PGA golf professional trained to introduce newcomers to the game or to develop existing skills to make participation more enjoyable.

Veteran golf writer Don Peddie, of Edina and Breezy Point, who has been charting golf play in this region for seven years, says "the number of rounds per year has shown an average increase of 6% per year since 1991, with a high of 9% in 1994 and 8% last year.

"That's an increase of 35% in seven years, and it's bound

to grow more with the addition of the Palmer and Cragun's courses," Peddie said.

Meantime, resort and restaurant expansion has kept pace with the golf developments. A full range of prices is available, whether it's a couple of bucks for a burger and modest motels or top-shelf tabs for gourmet foods and lodging.

The Midwest, however, is just the beginning of this area's plans, both individually and collectively, to use golf as a vehicle to entice players from such states as Texas, Florida, Arizona and New Mexico to escape hot summers and enjoy what Central Minnesota has to offer.

Will the proliferation of courses help some and hurt others?


Naturally there will be competition for both the golf and resort dollars — but virtually all of the owners agree that what helps the area will help all of them as they promote the Brainerd Lakes area as a premier golf destination with its wide variety of places to play and stay.

For more information, contact Brainerd Lakes Area Chamber of Commerce, P.O. Box 356, Brainerd, MN 56401-0356, 1-800-450-2838, Fax: (218) 829-8199. E-mail: brndlake@uslink.net

We'd like to say we buried the competition. But that would mean putting an extremely inferior fertilizer in the ground.

slow release fertilizer
IBDU
par ex
IMC Vigoro
NET WT. 50 LBS. (22.6 kg)

Only par ex with IBDU[®] has the highest WIN percentage. We have more than Lebanon[®] and more than Scotts[®]. Because the higher the Water Insoluble Nitrogen content, the longer your turf will remain green and the less chance there is for burn.

 **IMC Vigoro**

FROM FERTILE MINDS.

*Lebanon is a trademark of Lebanon Seaboard Corporation. *Scotts is a trademark of O.M. Scotts & Sons Co. © 1996 IMC AgriBusiness Inc. All rights reserved.

Precision Turf & Chemicals 7728 Commerce Circle Greenfield, MN 55373 612-559-5293	Ken Quandt Territory Manager West Allis, WI 414-327-3993	Willber-Ellis 1920 Oakcrest Avenue Roseville, MN 55113 (612) 631-1448
---	--	---

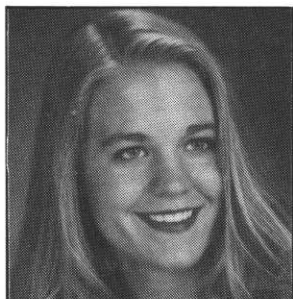
Four Legacy Scholarship Awards Announced by MGCSA

Four MGCSA Legacy Scholarships have been announced, including three new awards and one carry-over from last year.

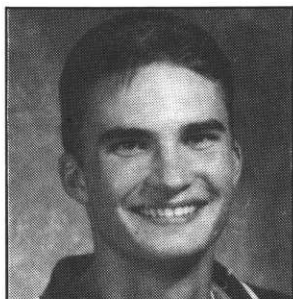
Lucas A. Mahal, a natural resources student

at Vermilion Community College in Ely, will receive his second installment of \$1,250. The son of Doug Mahal, superintendent at The Minikahda Club, Minneapolis, Lucas received a similar amount last year.

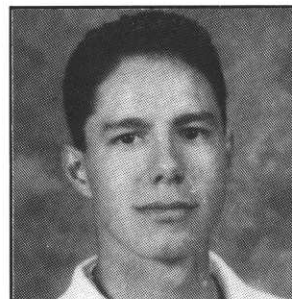
Amy Mounts, Evansville, has been awarded a \$1,250 scholarship and will be presented a similar amount next year. The daughter of Peter and Kristi Mounts, Amy is a computer science student at the University of Minnesota in Morris. Peter is superintendent



Amy Mounts



John Redmond



Aaron Rosales Smith

mathematics at Bethel College in St. Paul. Mark is superintendent at The Quarry in La Quinta, Calif.

The legacy scholarship program is designed to assist children and grandchil-

dren of Class AA, A, B, C, Associate and Affiliate members. The MGCSA provides scholarships to students attending college and vocational programs at any accredited post secondary institution.

Receiving \$1,000 scholarships were: **John Redmond**, Duluth, son of Mike Redmond and Susan Sullivan, who is studying biochemistry/molecular Biology and economics at the University of Minnesota/Duluth. John has the Minnesota territory for Scotts Co.

Aaron Rosales Smith, Palm Desert, Calif., son of Mark and Elsa Rosales Smith. Aaron is majoring in

children of Class AA, A, B, C, Associate and Affiliate members. The MGCSA provides scholarships to students attending college and vocational programs at any accredited post secondary institution.

* * *

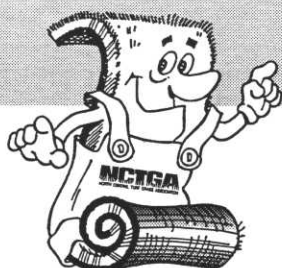
For more information on scholarship availability, contact the MGCSA office at (612) 473-0557 or toll free at 1-800-642-7227. Inquiries may also be faxed at (612) 473-0576.

QUALITY SUPPLIER OF TURF

- **Washed** and Regular Turf (Sod) in 1½ yd. or up to 55 yd. Big Roll Size (42" Wide)

TURF TYPES:

- ELITE KENTUCKY BLUEGRASS BLEND
- SPORTS TURF BLUEGRASS/P. RYEGRASS BLEND BENTGRASS



MEMBER

NCTGA	MGCSA
MSTMA	WTA
SDGSA	ISTMA
MTGF	TPI

8651 Naples St. N.E.
Blaine, MN 55449

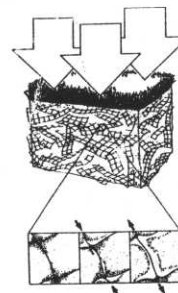
QUALITY CONSTRUCTION & RECONSTRUCTION

- Golf Courses
- Sports Fields



NETLON® ADVANCED TURF SYSTEMS

Self-Cultivating means healthier turf and better drainage.

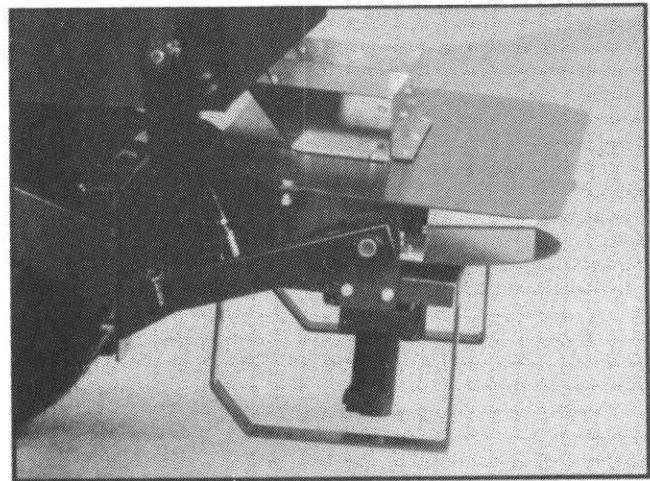
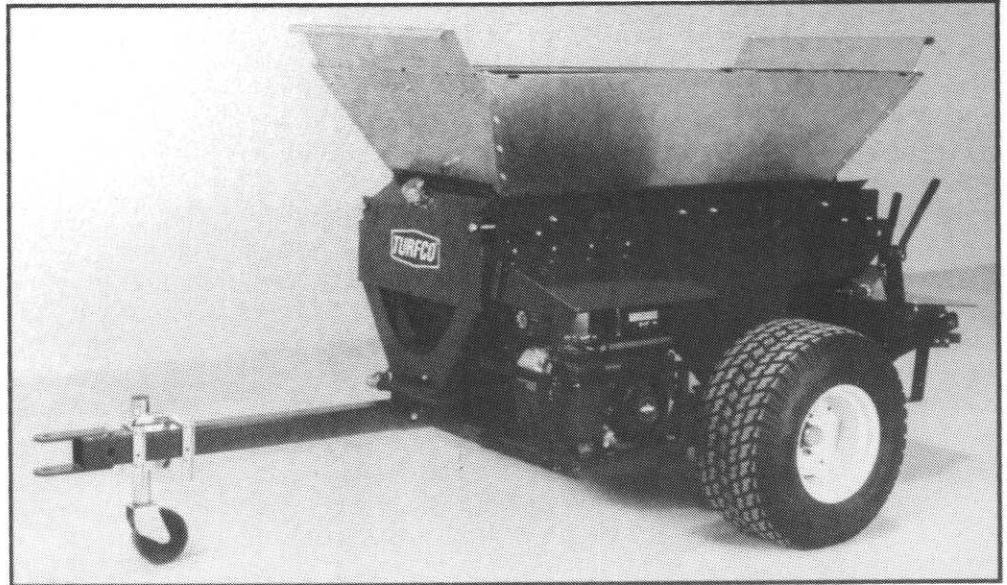


NETLON® MESH ELEMENTS AND MIXES

For Compaction Resistance on cart paths, sports fields and other high use areas.

For Quality Construction & Netlon® Products Contact:
(612) 784-0657 • FAX: (612) 784-6001

The New *Spin* is in.



Be one of the first supes on the block to own a new Turfco SP1530 Broadcast Topdresser. The SP1530 is all about efficiency. With its adjustable 15- to 30-foot spreading pattern, it covers most greens in two quick passes. It's powered by a 9 hp Vanguard gas engine and its tilted spinners make sure material penetrates deep into the turf.

And like all Turfco topdressers, the SP1530 comes with the patented chevron belt to assure uniform delivery of all topdressing materials, wet or dry.

For a demonstration, call your North Star Turf Supply Sales Team.

North Star
Turf Supply

St. Paul, MN 55117
612-484-8411
800-592-9513

Eagan, MN 55121
612-454-3106
800-551-4857



1999 Environmental Steward Award Call for Entries

Novartis Turf & Ornamental Products, Rain Bird, Purcell Technologies Inc. and Textron Turf Care and Specialty Products with Cushman, Jacobsen, Ransomes and Ryan brands, in partnership with the Golf Course Superintendents Association of America (GCSAA), announce the 1999 Environmental Steward Award Call for Entries.

The Environmental Steward Awards seek to recognize the accomplishments of golf course superintendents around the world who have demonstrated a commitment to environmental stewardship efforts on the golf course. Applicants are evaluated for overall course management in the areas of technology use, resource conservation, water quality management, integrated pest management, wildlife/habitat management and education/outreach. Three

North Star Turf Supply Beefs Up Service And Field Support

In an ongoing effort to improve customer service and technical support, North Star Turf Supply announces the addition of two key personnel.

"The North Star Turf Supply Marketing Alliance has been well received and has proven to be very successful," says Dan Miller, president of the Alliance. "That's our own observation, but more importantly, it appears to be the general consensus of our customers, too."

To support the increase in equipment sales and service, the Alliance has added Jeff Carrier to its service staff. Carrier will work closely with the NSTS sales staff setting up new equipment and maintaining the company's demo fleet. Prior to joining NSTS, Carrier worked for EZ-GO/Textron in St. Louis Park, Minn.

Also joining the North Star Turf Supply service staff is Jim Newton. Newton comes to NSTS from Jacobsen/Textron where he served five years as an Area Service Manager in the Upper Midwest. In this position, Newton served several Jacobsen distributors in the Midwest by supporting in-house and field support service on Jacobsen turf equipment, reporting all information and concerns back to Jacobsen's engineering department.

As a NSTS employee, Newton will perform these same duties on behalf of NSTS customers by addressing service-related issues within the company's service department as well as in the field. "We are delighted to have Jim on board. As our service-related activities grow, it's important that we keep up with our customers' demands and improve customer satisfaction," adds Miller. "Bringing Jim on board represents a tremendous step forward in developing a service and technical support group that will be well-positioned to support the Alliance's growth in the years to come."

national winners (representing one public, one private and one resort course facility), up to three winners from each of GCSAA's 100 affiliated chapters and a number of merit winners will be selected for the 1999 awards.

Applications for the 1999 awards are available through the GCSAA Service Center (800/472-7878) and from each of the participating sponsors. The application also is available on the GCSAA Web Site (www.gcsaa.org) and may be printed out or completed and returned electronically.

Winners will be formally recognized during the Feb. 12 Golf, Government and Environmental General Session at GCSAA's 70th International Golf Course Conference and Show, Feb. 7-14, in Orlando.

Novartis Turf & Ornamental Products, Rain Bird, Purcell Technologies Inc. and Textron Turf Care and Specialty Products with Cushman, Jacobsen, Ransomes and Ryan brands each will donate to The GCSAA Foundation in the names of all national and chapter winners. In addition, all four sponsoring companies each will donate \$5,000 to The GCSAA Foundation.

The GCSAA Foundation is committed to advancing environmental and scientific developments in golf course management, providing educational opportunities for superintendents and turfgrass students and preserving the history of the profession. Since 1993, participating sponsors have contributed more than \$100,000 to The GCSAA Foundation and more than 180 golf course superintendents have been recognized with Environmental Steward Awards.

For additional information on the 1999 Environmental Steward Awards, contact Jeff Bollig or Kristi Frey at the Golf Course Superintendents Association of America, 1421 Research Park Drive, Lawrence, KS 66049-3859; 800/472-7878, ext. 430 or 608, Fax: 785/832-3673.

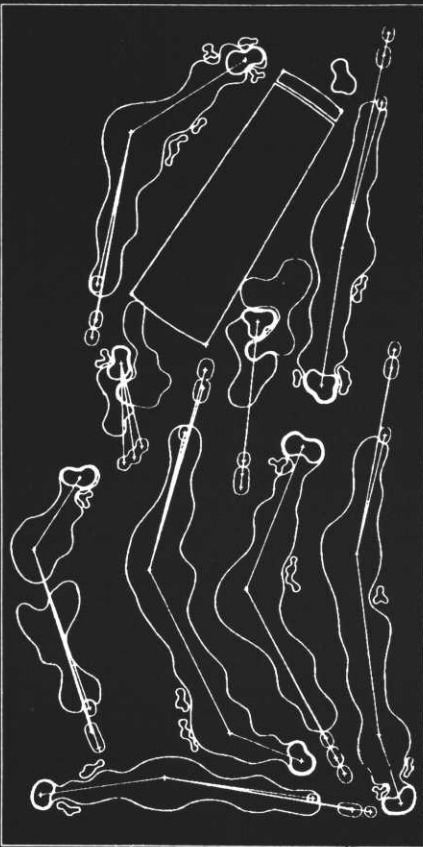
Penn State Accepting Applications

Applications are now being accepted for Penn State's Two-Year Golf Course Turfgrass Management Program for the class beginning in September of 1999. There is an application fee of \$35.00 and the deadline for applications is December 31, 1998.

Applications can be obtained by calling (814) 863-0129 or by writing to: Golf Course Turfgrass Management Program, The Pennsylvania State University, 456 Ag. Sciences and Industries Building, University Park, PA 16802-3507.

For more information, contact Heather Treaster, Golf Course Turfgrass Management Program. Phone: (814) 863-0129 Fax: (8814) 865-3006. E-mail: hgwl@psu.edu

HERFORD • NORBY



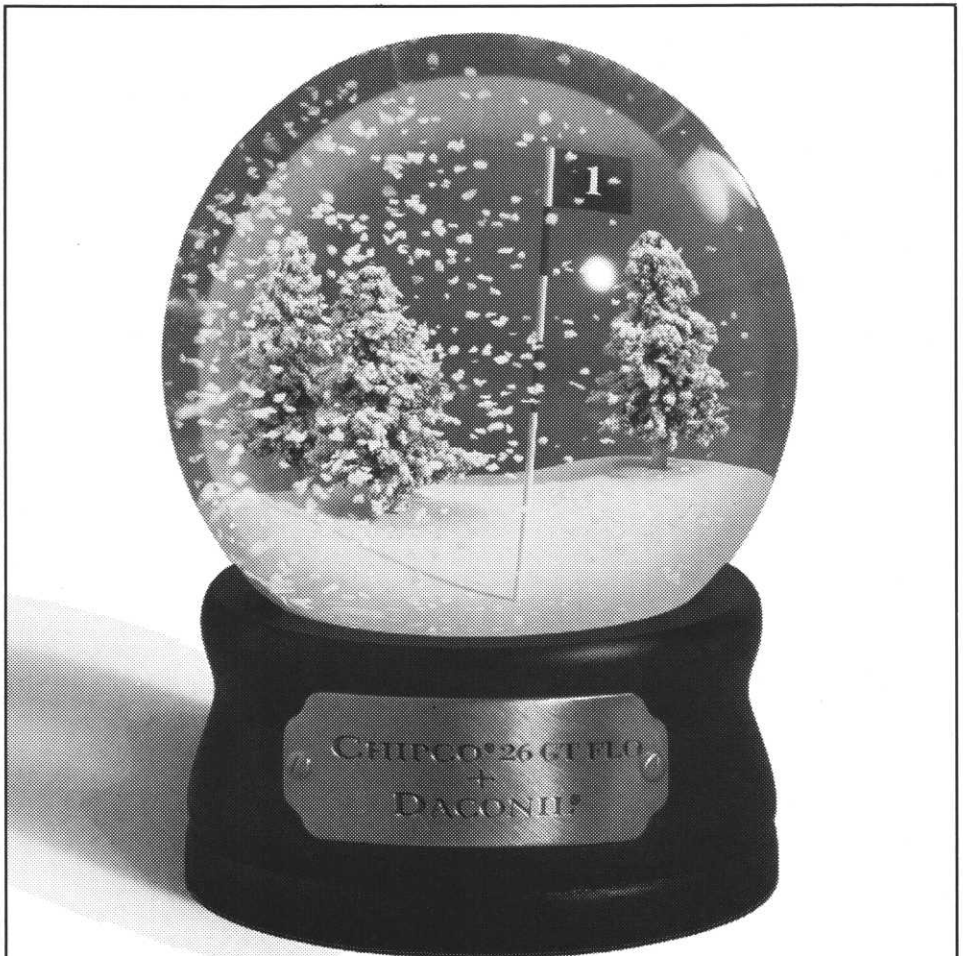
GOLF COURSE
ARCHITECTURE



(612) 938-0020 (612) 944-5888



Mike Kasner, Scot Milstoh, Michael Saatzer and Tom Kasner formed the winning team at the Scholarship Scramble at Elm Creek Golf Links of Plymouth.



CHIPCO® 26GT™ FLO + Daconil®
Stops Snow Mold Cold

RHONE-POULENC AG COMPANY

P.O. Box 12014, 2 T.W. Alexander Drive
Research Triangle Park, NC 27709
1-800-334-9745

Here's a Hole-by-Hole View of Pebble Creek CC

By CARY FEMRITE

Superintendent, Pebble Creek Country Club

Here is a brief description of Pebble Creek Country Club. MGCSA members will play the red nine and the white nine.

RED NINE

1 405 Yards Par 4

Club selection off the tee is important for two reasons on this hole. Ensure that you are in the fairway and at a distance for a full shot to a shallow green fronted by a large pond. The fairway bunker is 227 yards from the front of the middle tee. A back right pin may be easiest to get it close, however, it presents more difficult putts.

2 365 Yards Par 4

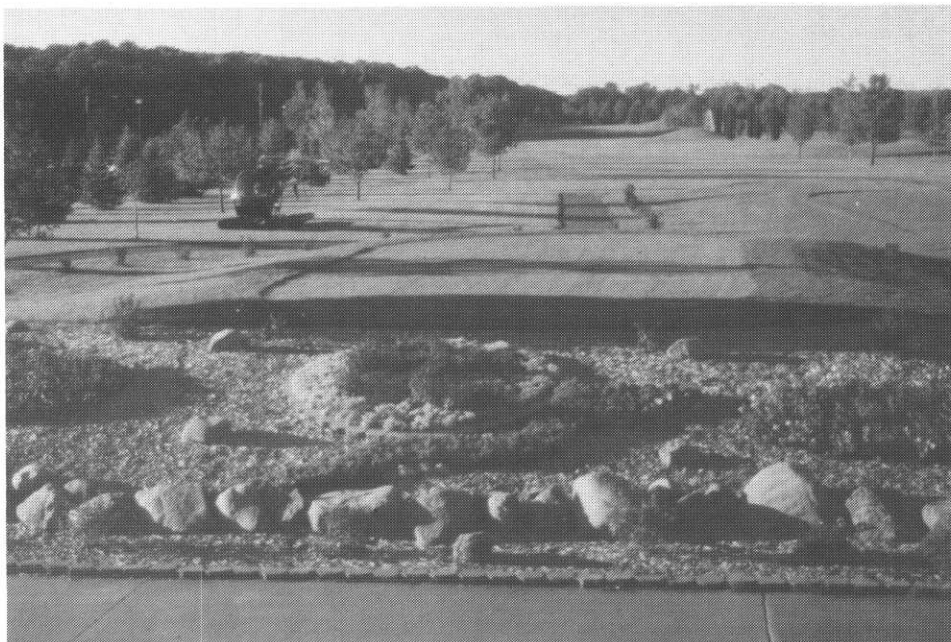
A short dogleg left presents little problem unless you get greedy off the tee. Laying up short of the mound leaves 130 yards to the green. However, if the driver is hot, take it over the fairway bunker — it's only a 230 yard carry. The green slopes toward the front except for a small shelf back right.

3 165 Yards Par 3

A well-bunkered Par 3 of 165 yards that usually plays into prevailing winds. The back half of the green slopes toward the front. Beware of the "sucker" pins front right and back left.

4 420 Yards Par 4

The most difficult Par 4 on this side requires a lay-up off the tee because of a pond that crosses the fairway. Land bridge on left side. Any-



thing too close to the edge will yield a downhill lie in the rough. It's 208 yards to the end of fairway. Stay below the hole if it's front of center.

5 530 Yards Par 5

Do you feel lucky? A dogleg right Par 5 boasts plenty of water down its entire right side. Plenty of "others" are recorded here; however if conditions are right, the hole is reachable in two shots. The drive must hug the water's edge to leave a shot of less than 250 yards to the green. A good approach shot is left, short of the hole.

6 400 Yards Par 4

Straightforward, well-bunkered, Par 4 requires a drive of 225 yards to carry left bunker. Out-of-bounds behind green, which doesn't hold shots hit to back half, makes proper club selection imperative or your approach

shot is left short of the hole.

7 550 Yards Par 5

Don't let the numerous O.B. stakes along the left side of this 550 yard hole bother you. Instead, visualize a drive of 245 yards to carry the fairway bunker. Rarely reachable in two, lay up on the left side of the dogleg to open up the small green. Don't be long!

8 210 Yards Par 3

Birdies are rare on this long Par 3. Usually played into the wind, this tee shot is all carry. The large tee can vary club selection between a 5-iron to a fairway wood.

9 415 Yards Par 4

In order to make par here, you must take the fairway bunkers out of

(Continued on Page 31)

MGCSA CLASSIFIED ADS

LOOKING FOR

**Cushman Front-Line
Model 806-810**
Liquid Cooled

Contact: David Kohlbry
Northland Country Club

(218) 525-1941

Ext. 121

MECHANIC WANTED

Midwest distributor of Toro products seeking mechanic with experience in commercial lawn equipment repair or set up including hydraulics, drive train, electrical and diagnostics. Must have own tools. OPEL certification(s) or ability to be certified a plus. Competitive wages and incentives based on experience. Benefits include health, dental, life insurance and 401K. Send resume or apply in person to: **RANDY MACKEBEN**, MTI Distributing Co., 14900 21st Ave. No., Plymouth, MN 55447. eoe/aa

Paid Advertisement

FOR SALE

Used
**TORO 474 1" BRASS
QUICK COUPLER VALVES**
with standard cover.
Requires 1 1/4" valve key.
\$15.00 each.

Contact:
DAVID WOOD
Oxbow CC

(701) 588-4266

FOR SALE

- 40 Toro VT3
Controllers\$350
- 1 LTC Controller ...\$500

All controllers include steel pedestal and control panel.

Contact: **TOM FISCHER**
Edinburgh USA

(612) 424-8756

FOR SALE

1991
Toro Fairway Aerator
- Model 9500
Used one season.
Price is negotiable.

Contact: **KEVIN CLUNIS**
St. Croix National Golf Club

(715) 247-4260

FOR SALE

Jacobsen Greens King
Model 62 Triplex
1,347 hrs.
\$2,000 or best offer.

Contact: **DAVE SIME**
Benson Golf Club

(320) 843-2109

LOOKING FOR

**BALLPICKER
FOR
RANGE BALLS**

Contact:
JOHN QUEENSLAND
Cedar River CC

(507) 582-3595

FOR SALE

(3) Verticut Reels for a
Ransomes 350 Fairway Mower

\$1,500 or best offer

Contact: **JOHN GRANHOLT**
Eau Claire Country Club

(715) 836-8422

FOR SALE

(14) Seven Blade Spartan
Fairway Units & 7-Gang
Frame, New Bearings,
Reels in excellent condition.
Sharp and ready to go.
Can deliver.

Contact: **TOM LUNDGREN**
KateHaven GC

(612) 786-2945

FOR SALE

12 x 18 Practice Net
with sides and top frame
includes two mats
LIKE NEW
\$400 or best offer.

Contact: **JOHN MONSON**
Long Prairie C.C.

(320) 732- 3696

FOR SALE

Jacobsen Greensking IV
\$1,500 or best offer
Ryan Greensaire II Aerifier
\$1,000 or best offer.
**Topdresser for Cushman
Truckster** \$500 or best offer.
Contact: **AL HANSON**

**(612) 434-5501
or 434-9104**

**MGCSA
Membership
Dues
Are
PAST DUE**



**If You
Have Not
Paid Your
1998-99 Dues,
This Is Your
Last Issue
of
Hole Notes**

USED EQUIPMENT SALE

Cushman Trucksters from	\$1,995.00
Topdresser for Cushman	\$1,995.00
Cushman Ga-60 Aerator	\$12,500.00
Core Harvester	\$2,495.00
Toro Aerators	\$4,495.00
Core Destroyer for Cushman Mower	\$2,495.00
Ryan GA-30 from	\$3,495.00
7-gang PTO Driven Reel Mower	\$5,495.00
Demo Greens Mower 160	\$11,900.00
F-10 and Parkmasters from	\$3,495.00
Toro Bunker Rake	\$3,495.00
Jake Turfeat w/Cab, Broom and Deck	\$6,995.00
John Deere Rotary Mowers	\$6,995.00
Olathe Sweeper PTO	\$1,295.00
Cozy Cab for Toro Groundsmaster	\$895.00

*More trades on the way, give us a call
and we'll find what your looking for!!!*

CUSHMAN MOTOR CO., INC.
612-333-3487 or 800-759-5343

Paid
Advertisement

HELP WANTED

We specialize in Golf
Course Renovation
and Drainage. Several
Full-time positions are
available within our
growing company.
Wages and benefits
are based on
experience.

If you are looking
for a change,
give us a call

(612) 443-2958

Paid Advertisement