

Cragun's—

(Continued from Page 9)

He is most appreciative of the cooperation and hard work exhibited by Kientzle, the Cragun staff and Bruce Charlton, vice-president and golf course architect for the Jones firm.

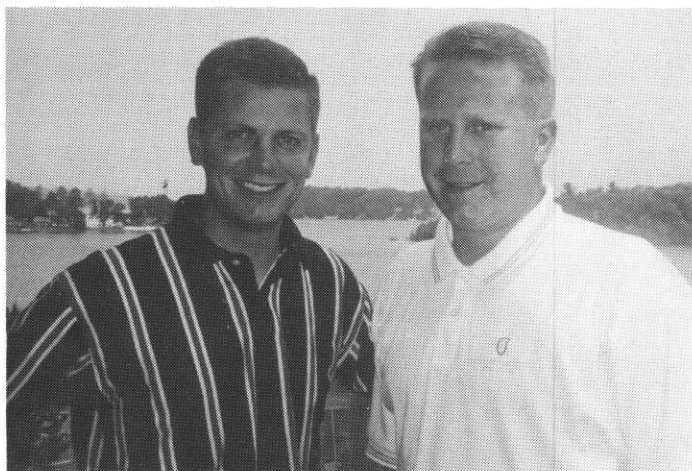
Good weather also favored rapid construction, except when a record rainfall, which brought several sleepless nights for Kientzle & Company, doused the Brainerd area in June. "Otherwise, we had good weather, allowing Rardin Construction, scraper operator Jerry Thomas and Erickson Irrigation to proceed with their work consistently."

Cragun's course is being shaped around basically level terrain and has required the least amount of dirtmoving of any projects undertaken by the Jones firm. It also includes a 104-acre lake, has marshlands that have been utilized judiciously and offers Providence greens and fairways and Penncross on its tees.



A 104-acre lake adjoins the par three 12th hole.

Construction of a 250 x 66-foot maintenance building, which also includes a dormitory to accommodate 12 interns, is proceeding this fall. In addition construction of a club-



Head golf pro Chuck Klecatsky and assistant Tom Hice.

house is scheduled to start soon.

Cragun's will be the site of the Stodola Scramble, sponsored by the Minnesota Golf Course Superintendents' Association to raise money for research, next summer, and Kientzle is looking forward to it.



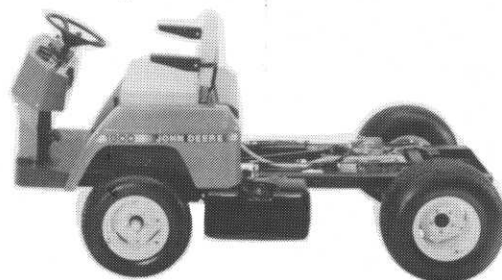
Two Anoka-Hennepin Tech students — Denny Perrault, left, and Phil Jones — pause to review mowing progress with Tom Kientzle, director of golf at Cragun's.

"By that time things should look pretty good around here," he said, "and it will be nice to have our industry colleagues see what has been accomplished."

JOHN DEERE

1800 UTILITY VEHICLE

*You'll Soon Understand Why
"Utility" Is Its Middle Name.*



The 1800 Utility Vehicle offers tremendous work potential from one basic machine. Foot-controlled hydrostatic drive gives you an immediate advantage. Teamed with the gutsy, liquid-cooled 18-hp engine, this drive system delivers infinite speed control for precise operation. Great for jobs ranging from spraying to spreading to hauling. Other advantages include power steering, cruise control, wide stance and simple access.



Polfus Golf & Turf

12040 Point Douglas Drive S.
Hastings, MN 55033

(612) 437-7747 • Fax: (612) 437-3483



Why **RINGER** this fall ?

#1 University Proven Top Performance

In university trials Ringer is continually at the top in performance in color and quality. Ringer is the best fertilizer to reduce conditions that cause diseases such as grey snow mold and dollar spot. Ringer is an excellent tool for integrated turf management.

#2 Efficiency

Unlike manure based products Ringer takes up to 50% less material with superior results. Top results with less labor and storage inputs. Ringer is formulated for performance and uses the finest ingredients for consistent results.

#3 Quality

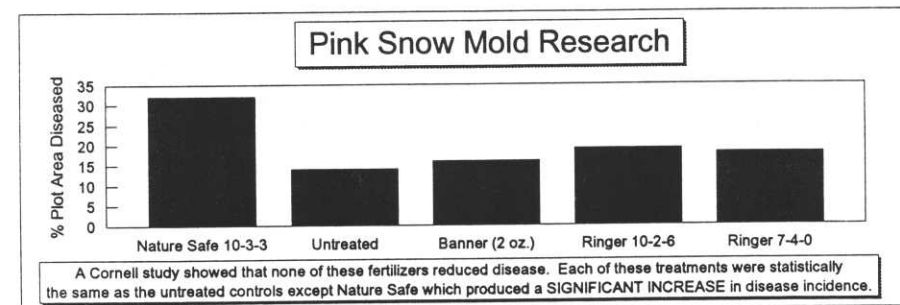
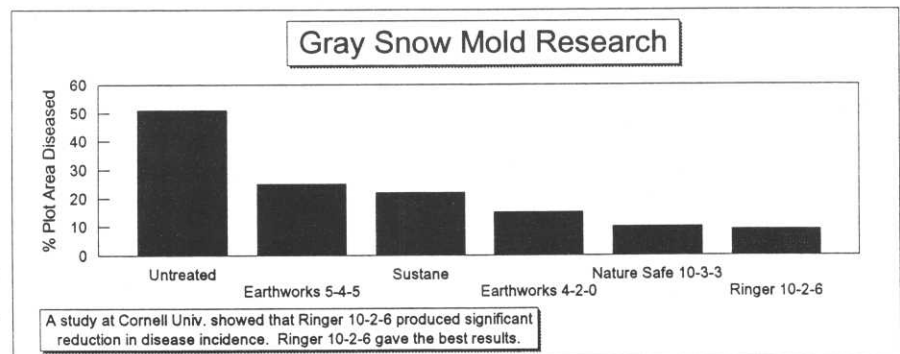
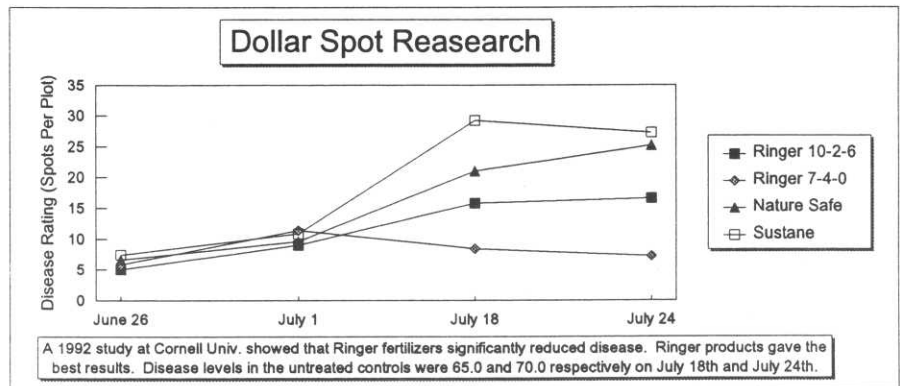
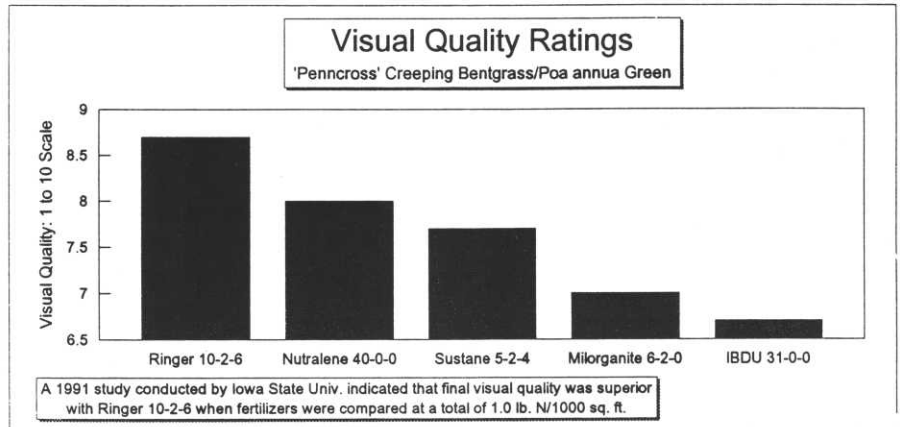
Ringer uses the finest protein and carbohydrate sources. Unlike competitors Ringer's new particle has superior spreadability, low odor and low dust.

North Star Turf and Ringer Recommend

Greens and Tees Fairways

Ringer 10-2-6
or
Ringer 8-2-8

Ringer 10-2-6
or
Ringer 12-2-6
or
Ringer 15-0-15
or
Ringer 18-2-6



North Star
Turf Supply

St. Paul, MN 55117
612-484-8411
800-592-9513

Eagan, MN 55121
612-454-3106
800-551-4857

Nemadji GC Adds Three-Hole Par-3 Course For Juniors

By **MARK S. CARLSON**
Nemadji Golf Course

Because of the growing popularity in the sport of golf, traffic on many courses has become congested. This popularity, caused by increased coverage of such young golfers as Tiger Woods, has increased the number of beginners and juniors coming out to the golf course. In order to accommodate junior and beginner golfers, Nemadji Golf Course in Superior, Wisconsin constructed a three-hole Par-3 course. This 450-yard course allows beginners and juniors to learn the game and improve their skills while avoiding the frustration that may build up if they tried to play on a regulation course before they are ready.

In the past decade alone, Nemadji has experienced tremendous growth in many areas which necessitated the building of a 3-hole, Par 3 course. In 1976, Nemadji was an 18-hole course with approximately 15,000 rounds played that year. In 1998, Nemadji is a 36-hole course, with both the East/West and North/South courses receiving a 3½-star rating in *Golf Digest's* "Places to Play." Not to be outdone by the excellent conditions of the actual course, the service staff at Nemadji also received recognition, earning a Service Ace Award. Over 5,300 public and resort golf courses in the United States, Canada, Mexico and the Islands are eligible for a Service Ace Award. Of the 5,300 courses that were eligible, only the top 50 received a Service Ace Award, and Nemadji was 33rd in this ranking. Because of the excellent condition of the golf course, and the high caliber of service, by the end of 1998 there will be an estimated 78,000 rounds of golf played on Nemadji's 36 holes.

In addition to this increased general play, Nemadji's junior program has skyrocketed within the last five years. In 1995, there were only 60 juniors in the summer junior golf program. In 1998, there are 192 juniors participating in the Nemadji Junior Golf Program. The junior program started out as a simple league, which would only give juniors the chance to come out and play on the golf course. Through the past few years, the junior program has evolved into much more than that.

Nemadji realizes that junior golfers are the future of golf. The fine tradition of honesty, integrity and pride that has been a trademark of the game of golf can only be continued if the young golfers of today are properly educated in etiquette, swing basics and on and off-course behavior. Nemadji Golf Course is dedicated to providing area juniors with all of the available opportunities that will help them increase their skill and their appreciation of the game of golf. At the beginning of the summer there are two junior clin-

(Continued on Page 15)



Nemadji's Par 3 course features water, sand traps and all other hazards encountered on a regulation-sized course.

HEBERG
AGGREGATES
"Built on Service"

For All Your Landscape Hardgoods

Washed Sand & Gravel, Rip-Rap,
Boulders, Decorative Rock, Mulches



Free Installation Training

- Complete line of NDS Drainage Products
- Concrete Retaining Walls
- Concrete Pavers
- Landscape Site Furnishings
- Water Gardening Supplies
- Largest Natural Stone Inventory in Minnesota

INTERLOCK
CONCRETE PRODUCTS INC.



2 Convenient Locations

Plymouth
1205 Nathan Lane N.
545-4400

Rosemount
4375-170th St. W.
423-5320

Same Day Delivery

ConSyst® ... The All-Purpose Fungicide

Diseases Controlled

FAIRWAYS, LAWNS & ORNAMENTAL TURF

	Interval	lbs per acre
Sclerotinia Dollar Spot	7-21 day	8.25 - 10
Helminthosporium Leaf Spot	7-21 day	8.25 - 10
Rhizoctonia Brown Patch	7-14 day	8.25 - 10

TURF APPLICATION

	Interval	Preventive oz per 1000 sq ft	Curative oz per 1000 sq ft
Sclerotinia Dollar Spot	7-14 day	2.4	4-8
Helminthosporium Leaf Spot	7-10 day	2.4	4-8
Rhizoctonia Brown Patch	7-14 day	3.4	4-8
Snow Mold (Gray & Pink)	•	6.9	9-10
Anthraxnose	7-14 day	2.4	4-8
Copper Spot	7-10 day	3.5	4-8
Gray Leaf Spot	7-14 day	2.4	4-8
Large Brown Patch	7-14 day	3.4	4-8
Red Thread	7-14 day	3.5	4-8
Stem Rust	7-14 day	3.5	4-8
Mildew (Powdery & Downey)	7-14 day	2.4	4-8
Summer Patch	7-14 day	2.4	4-8

SNOW MOLD

Preventive:	oz per 1000 sq ft
Gray Snow Mold (Typhula spp.)	6-9
Pink Snow Mold (Fusarium spp.)	6-9

LANDSCAPE ORNAMENTALS

Diseases:

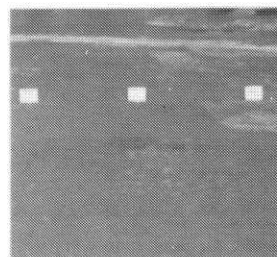
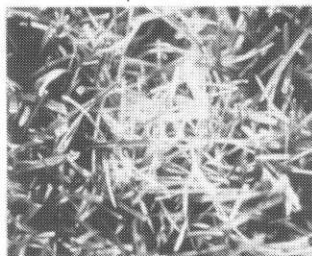
Ovulinia Blight	1- 1.5 lb / 100 gal Water	Begin as flowers open. 4-6 days.
Anthraxnose	1.0 lb / 100 gal Water	Apply at Bud break. 7-10 day interval
Leaf Spots	.75 - 1.0 lb / 100 gal Water	Apply at Spring Bud break. 7-10 days interval
Standard Application	1.0 lb / 100 gal Water	Refer to label.

CHRIS QUINLAN

TECHNICAL SALES REPRESENTATIVE

ConSyst® fungicide provides both contact & systemic activities for consistent, broad spectrum control of turf and ornamental diseases. It is both curative and preventive to common and resistant diseases eliminating the need for product rotation. The formulation is dustless, water dispersible granules making it easy to store and easy to use. No other single fungicide can match the superior disease protection. It's synergistic.

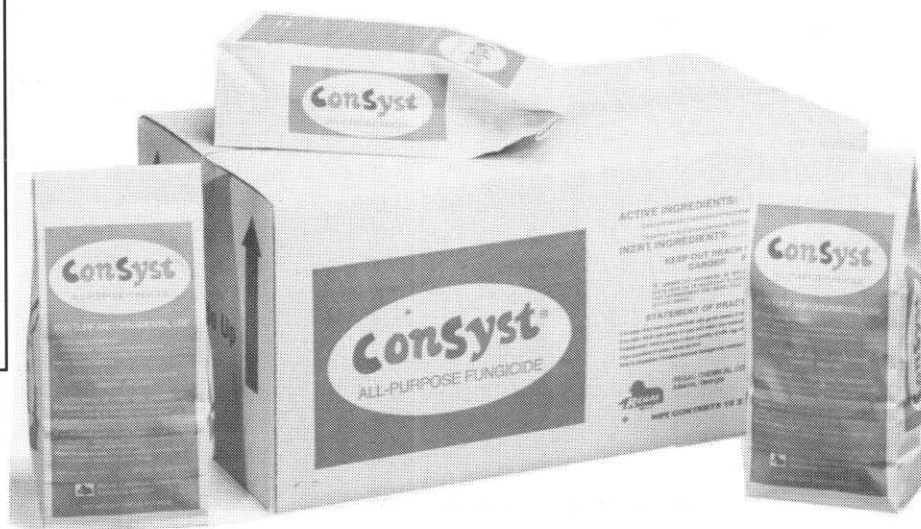
Dollar Spot



Snow Mold



Brown Patch



WILBUR-ELLIS COMPANY/PACIFIC INTERMOUNTAIN



WILBUR-ELLIS

IDEAS TO GROW WITH®

1920 OAKCREST AVENUE, BAY 8
ST. PAUL, MN 55113
OFFICE 612.631.1448
FAX 612.631.1483
MOBILE 612.309.6424



Nemadji—

(Continued from Page 13)

ics offered to area junior golfers. Each clinic is divided into five sessions. These sessions cover etiquette and rules, putting, chipping, basic full-swing mechanics and course management. Nemadji also provides clubs to juniors who are just starting out and may not have clubs. The clubs that are handed out to the juniors are clubs that have been donated by the public and cut down by the Nemadji staff. Offering a free driving range token for every club donated encourages these generous donations. All of these efforts, along with the junior golf program, help to promote the game of golf to area juniors.



Unusually tricky bunker featuring sand and a tree!

Nemadji's Junior Golf Program aims to provide the proper education to area juniors so that the game of golf can continue its fine tradition into the future. Rather than being a simple league, the Nemadji Junior Golf Program now consists of five skill levels. Level One teaches beginners etiquette, rules and basic swing mechanics. Once the basics have been learned, Level Two takes them to the Par-3 course where the juniors receive on-course instruction and experience. Once they have graduated to level 3, they play 3-6 holes on one of the regulation courses. This builds on the foundation that was started in Level One. Once in Level Four, they play a full nine holes on the regulation course. When their scores are low enough, they move to Level Five, where they play a full 18 holes and their scores are below 100. With over 190 kids participating in the five different levels, the course and driving range would not be enough physical space for all of the kids. The rapidly expanding junior program was one of the driving forces behind building the three-hole Par 3 course.

The work on the Nemadji Practice Course began in the summer of 1997. Designed and built by Derek Van Damme of Madison and Steve Flagstad, Nemadji superintendent, the already 36-hole golf facility utilized the space of an old, rarely used practice area for the new course. Construction was completed in June 1998. The cost of construction was \$50,000, with \$12,000 of that cost donated. A

portion of the donated funds came from two tournaments that are held annually to help raise money for junior golf. The Lenroot Maetzold Golf Fundraiser Event and the Mertz Mortorelli Junior Golf Fundraiser raise approximately \$8,000 every year for junior golf. The 1998 revenue of the Par 3 course will be approximately \$8,000.

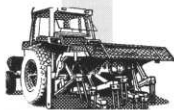
The Par 3 course has all of the hazards of a regulation golf course, from bunkers to a water hazard. The layout and length of the course can provide a challenge even to experienced golfers, but it is also easy enough so that juniors and beginners do not get frustrated. There are different sets of tees that can be used by experienced or beginning golfers. Using these different tees, and playing the course three times, allows a golfer to have a 9-hole round of golf that is comparable to that of a round played on a regulation course. Golfers can buy green fees for 2-hours (\$5) or for a whole day (\$8), with reduced prices for juniors (\$2 for two hours, \$4 for the whole day). All juniors participating in the Nemadji Junior Golf Program receive a free season pass to the Par 3 course, and all juniors not involved in the program can purchase a season pass for only \$29.

Since the opening, the Par 3 course has gained in popularity. Besides being used by the juniors, the general public has also increased play on the Par 3 course. This is attributed to the Media Day Event and the incorporation of the Par 3 course into a tournament. The Media Day event allowed members of the local media to come and play the new course for free, allowing for more publicity of the course. The Lenroot Maetzold Golf Fundraiser Event, one of the two tournaments that are held annually to benefit junior golf, introduced the general public to the Par 3 course. The course was incorporated into the tournament round, making the tournament a 21-hole tournament instead of an 18-hole tournament.

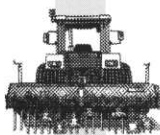
The building of the Par 3 course has proved to be a worthwhile endeavor. Not only does it give the general public a different place to play and practice, it also gives juniors and beginners a place where they can build a foundation with all experiences of a regulation course. The Nemadji Practice Course teaches not only the skills of the game, but also allows juniors and beginners to experience the social aspect of golf.

*Make Plans to Attend
the October 5th MGCSA
Monthly Meeting
at the new
Chaska Town Course*

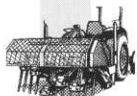
**VERTI-DRAIN® & VERTI-SEED® available only from
PRECISION TURF & CHEMICAL, INC.**



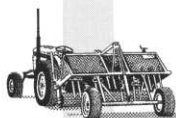
405 Model -
24 inches deep



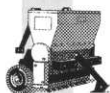
250 Model -
16 inches deep



205 Model -
16 inches deep

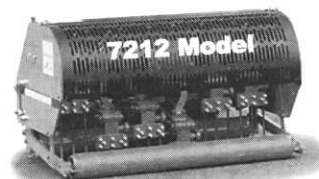
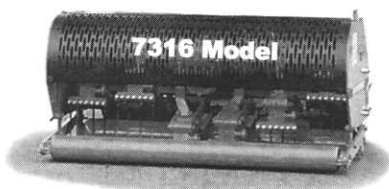


200 H Model -
16 inches deep



Verti-Seed
Overseeder

These two new aerators
can make your job
70% easier!



*** NEW! ***

from the makers of VERTIDRAIN
RAPIDCORE...

Saves Time!

RAPIDCORE aerates most greens in less than 30 minutes.

Saves Water!

RAPIDCORE allows water to soak deeply into the soil's profile.

Saves Chemicals and Fertilizers!

RAPIDCORE's aeration will help the turf to breathe, eliminating stagnate, acidic environments. Chemicals are more efficiently delivered to the roots.

Saves Money!

RAPIDCORE's great all-around savings make it the affordable choice—\$7,595⁰⁰

*** Come see
for yourself!
Call to arrange
a demo. ***



Turf & Chemical Inc.

7728 Commerce Circle • Greenfield, MN 55373
Office 612.477.5885 • 1.800.925.8873
Fax 612.477.6511

Golf Making Spectacular Impact On Brainerd Lakes Area Economy

By RALPH TURPINEN

An unprecedented golf boom is making a spectacular impact on the tourist industry in Central Minnesota — and it doesn't show any signs of slowing down.

For virtually the entire 20th Century, the Brainerd Lakes Area primarily captured national attention as a mecca for fishing and vacationing. But now, during the final decade of the 1900s, the new lure for attracting travelers is golf.

This isn't to say that fishing is a thing of the past. Heavens no! But it now has excellent company in attracting thousands of willing-to-spend golfers to the area's unusual variety of public and resort courses.

For the past eight years the Brainerd Lakes Area not only has witnessed the completion of three new, nationally-recognized golf courses, but two more are under construction, another is doubling its size and several others have added on to their existing nine holes or are doing considerable remodeling on their lodging as well as golf facilities.

"The impact of golf also filters through our local economy because of the dollars spent in off-golf course businesses," said Mark Ronnei, general manager of Grand View Lodge in Nisswa, which ignited the championship golf course boom when it began construction of The Pines in 1988. "Many lake homes have been built or purchased because of the quality and quantity of golf in our area."

"The addition of The Pines, The Preserve in Pequot Lakes, The Classic at Madden's and the new Rutger's Lakes course impacts our local economy by 15 million dollars or more per year, and that is almost assuredly low," Ronnei said. "This includes money spent at the golf courses, lodging, meals and goods and services purchased by golfers and employees of the establishment."

Furthermore, he projects that "by the year 2000 we will have double the current impact that we see today."

Nineteen area golf courses in the area bordered by Vintage Golf Club in Staples in the west, The Preserve at Pequot Lakes in the north, Mille Lacs Golf Club in the east and Little Falls Country Club in the south — all less than 40 minutes from Brainerd — have jointly begun promoting the central Minnesota area as a principal golf destination — with a broad range of prices for golf, lodging and restaurants.

Golfers can spend less than \$10 for some nine-hole courses to upwards of \$100 for some of the more pricey designer layouts that already have captured national attention for their design, beauty and quality.

Although golf was played at such venerable resorts as Madden's, Breezy Point and Grand View Lodge in the

1920s, and at several new courses that began dotting the Central Minnesota landscape during the '30s and '40s, it really wasn't until 1988 when Fred Boos convinced co-owners to build The Pines at Grand View Lodge that the first of a series of "golf explosions" took place. The Pines immediately captured national attention — and significant honors — as did The Preserve, which it co-owns in Pequot Lakes, and The Classic, Madden's handsome new 18-hole championship addition to the 45 holes it already had available for play at the Gull Lake resort.

But the boom didn't stop there. Now 45 more holes are being built at Cragun's Resort on Gull Lake (*See story on Page 7*) with the first 18 scheduled to open September 11, according to Tom Kientzle, director of golf. He also said that test rounds were played in August. In addition, Deacon's Lodge, an Arnold Palmer-designed championship course is

(Continued on Page 24)

The Best Choice In Fertilizers!

SUSTANE
Organic Fertilizer



Organic-based fertilizer choices from LESCO offer important features and benefits for a wide range of granular applications.

- Natural organic products release nutrients gradually, delivering long lasting results
- Minimizes waste and risk of plant injury
- Improves soil quality and encourages microbe activity
- Available in a wide range of formulations.

Green Flo
Liquid Fertilizer

Liquid fertilizer choices from LESCO offer key features and benefits for your liquid applications.

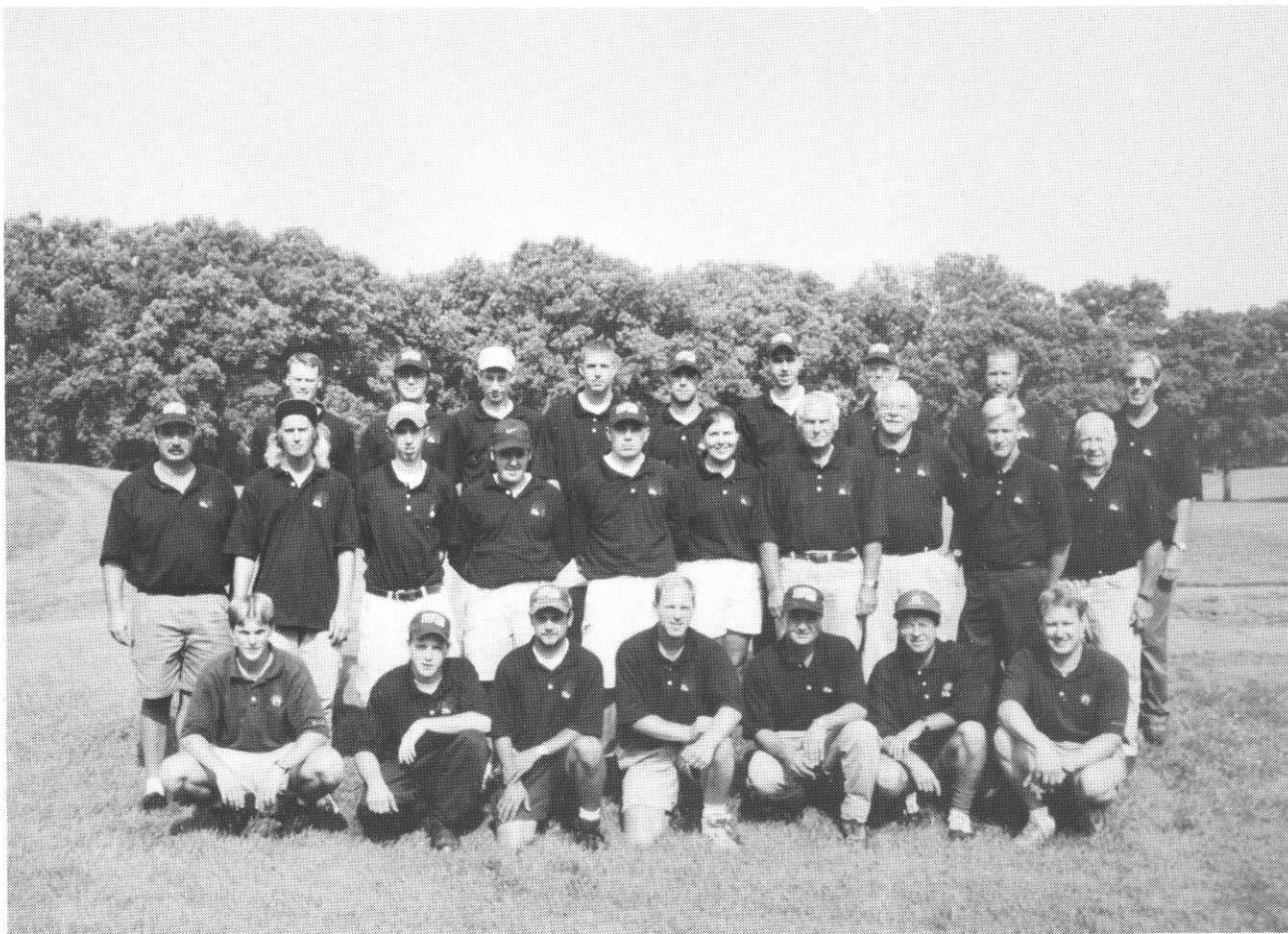
- Contains patented Triozone™ slow-release technology
- Increases plant growth efficiency
- Increases nitrogen absorption
- Convenient to use with long lasting results
- Available in a wide range of formulations

LESCO...the ideal fertilizer choice. Ask your LESCO Professional for information or call 800-321-5325.

LESCO

Sustane is a registered trademark of Sustane Corp. Triazone is a trademark of Tessenderlo Kerley. LESCO is a registered trademark and GreenFlo is a trademark of LESCO, Inc.

**Congratulations
To Doug Mahal
And His
Minikahda Staff
For Hosting The
30th Curtis Cup!**



Minnesota Golf Course Superintendents' Association

MGCSA Championship Results

North Links Golf Course • North Mankato

August 17, 1998

CHAMPIONSHIP FLIGHT

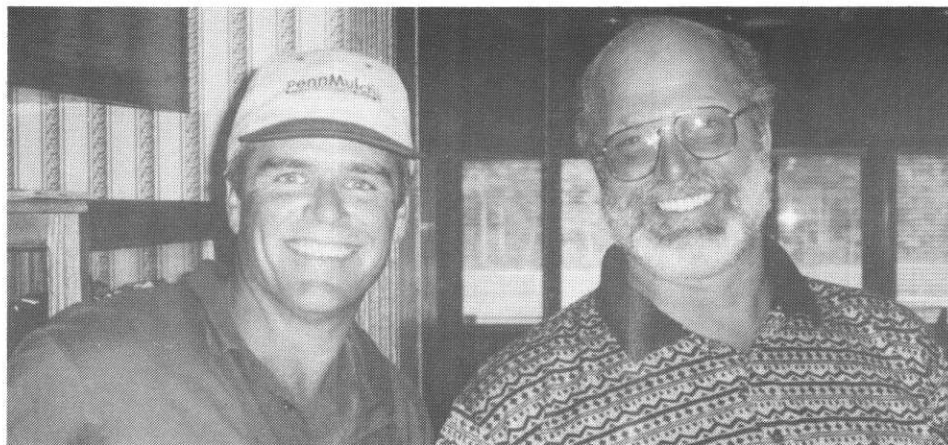
Chris Manor	74
Monte Swift	75
Pete Mogren	75
Tom Notch	75
James Haroldson	75
Jeff Pint	76
Bruce Leland	77
Duane Slaughter	77
Mark Moers	77
Steve Busch	79
James Gardner	80
Barry Provo	80
Brooks Ellingson	80
Leif Erickson	81
Randy Adelman	81
Dan Hinton	81
Jeff Bohler	81
Cary Femrite	83
Jeff Backstrom	83
John Nylund	83
James Kimberly	83
Steve Makowske	84
Troy Elam	85
John Katterheinrich	85
Jerry Webb	85
Charlie Miller	86
Tom Meier	87
Paul Johnson	89
Kevin Clunis	94
Dennis Owen	95
Larry Vetter	WD
Tom Schmidt	WD

SENIOR FLIGHT

Tom Gibbons	78
Mike Klatte	89
Mark Klatte	89
Daryl Scheerhoorn	105

FIRST FLIGHT Net Scores

Walt Braunig	66
Joel Metz	69
Bob Adams	69
Kevin Norby	70
Fletcher Waltman	71
Dave Krupp	72
Mike Redmond	72
Chuck Schoenrock	73
Chris Fossen	73
Derald Naumann	76
Scott Lombard	77
Richard Carr	77
Terry Negan	78
David Kirscht	79
George Peterson	79
Garyling Ihle	80
Dan Evans	80
Kevin Black	80
Leroy Wurm	83
Tracey Stenberg	84
Mike Lind	89
Robert Stern	91



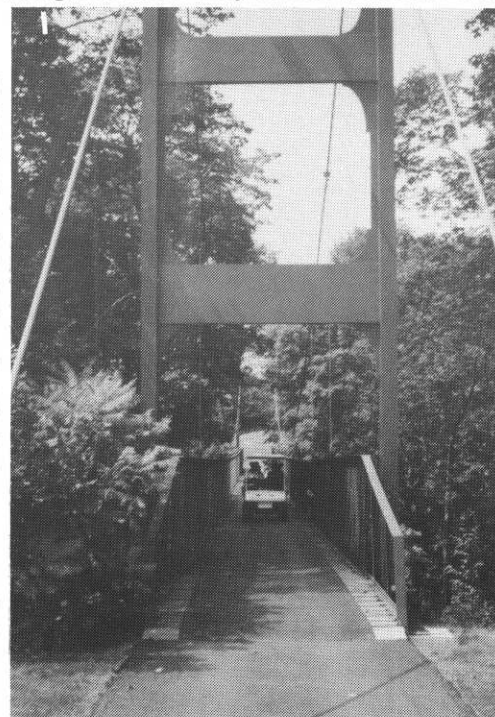
Jeff Whitehurst, Twin City Hydro Seeding, left, and Cary Femrite, Pebble C.C.

SECOND FLIGHT Net Scores

Dave Sime	66
Dave Solga	69
Matt Rostal	69
Mike Austin	70
Fred Taylor	73
Dale Walesheck	74
Jeff Stedmann	75
Andy Nessel	75
Wes Stoneback	76
Al Starke	78
Bob Fredericks	81
Mark Goettig	82
Dave Lundeen	84
Al Jaques	86
Jerry Storjohann	89
Ray Froehlich	105
Tom Fischer	NC

CALLAWAY FLIGHT

Jeff Bushlack	87
Chris Schellenberg	90
Jeff Whitehurst	96
Jason Stuczynski	102
Bob Atol	102
Jeff Johnson	111
Ben Ratzlaff	129
Brian Kenny	135



The big bridge at North Links G.C.

Williams-Gill



& Associates Golf Course Architects

Garrett Gill, Principal

Office (715) 425-9511
Facsimile (715) 425-2962
E-mail golfwga@presenter.com

Williams, Gill of Wisconsin

122 N. 2nd St.
River Falls, WI 54022

• Services •

- New Course Design
- Master Plans
- Golf Practice Center Design
- Environmental Planning
- Irrigation Design
- Renovation & Restoration
- Site Planning

Productivity, Performance and



TORO

GREENSMaster® 3100

- Available in 2 or 3-wheel drive
- Quick response power steering
- Equipped with Toro's Turf Guardian® leak detector
- Sure-footed traction

EQUIPMENT FINANCE PROGRAMS AVAILABLE

Contact Your
MTI Representative Today

COMMERCIAL EQUIPMENT REPAIR SERVICE

- Trouble Shooting
- Cutting Unit Rebuilding/Sharpening
- Electrical Diagnostics & Repair
- Hydraulic Diagnostics & Repair
- Engines – Motor Repair/Rebuilding

Call Randy Mackeben, Ext. 229

IRRIGATION CONTROLLER REPAIR SERVICE TORO AUTHORIZED REPAIR CENTER

- Trouble Shooting
- Refurbishing/Updating
- Solid State
- Electro/Mechanical

Call John Artus, Ext. 205

WATCH FOR OUR FALL/WINTER SERVICE SPECIALS