

*It's about* **TORO**  
*playability*

## Enhance Your Conditions!



### IRRIGATION SYSTEM

- Upgrades • Renovations • Enhancements

### EQUIPMENT

- Maintenance • Fertigation • Renovation

*Your Players Are As Important To Us  
As They Are To You!*

### SAFETY

- Lightning Detection Systems • Warning Systems

### ENVIRONMENTAL

- Organic Based Nutrient Injection Through Irrigation  
— *The Efficient And Environmentally Responsible Solution*



*Total Solutions at Cost-Effective Prices*

CALL TODAY

**MTI** DISTRIBUTING CO. **TORO**

#### PLYMOUTH

14900 Twenty-first Avenue North  
Plymouth, Minnesota 55447-4655  
1-800-362-3665 • 612-475-2200

#### FARGO

4310 Main Avenue  
Fargo, North Dakota 58104  
1-800-782-1031 • 701-281-0775

# HOLE NOTES

Official Publication  
of the  
Minnesota Golf Course  
Superintendents' Association

## 1998 MGCSA BOARD OF DIRECTORS

### Officers

President.....Jim Nicol, CGCS  
Hazeltine National GC  
612/448-3626 • Fax: 612/448-1726

Vice-President .....Tom Fischer, CGCS  
Edinburgh USA  
612/315-8582 • Fax: 612/315-8585

Secretary .....Pat Walton, CGCS  
Rolling Green CC  
612/478-2179 • Fax: 612/478-6025

Treasurer .....Rob Panuska  
Waseca Lakeside CC  
507/835-2574 • Fax: 507/835-3472

Ex-Officio .....Fred Taylor  
Mankato GC  
507/388-2546 • Fax: 507/387-4991

### Directors

Mike Brower .....Hillcrest CC  
612/777-5186 • Fax: 612/774-1752

Jeff Churchill .....North Star Turf Supply  
800/592-9513 • Fax: 612/484-8257

Bob Distel .....Wayzata CC  
612/473-6955 • Fax: 612/404-2532

Paul Eckholm, CGCS...Heritage Links GC  
612/440-6494

Jim Johnson, CGCS.....Rich Spring GC  
612/685-4322

Mike Klatte, CGCS .....Elm Creek GL  
612/478-8592

John Queensland .....Cedar River CC  
507/582-3595

Steve Shumansky ....Perham Lakeside CC  
218/346-6071

Steve Young .....Plaisted Companies, Inc.  
612/441-1100 • Fax: 612/441-7782

\* \* \* \*

### EDITOR

Steve Shumansky  
E-mail: plcc@eot.com

\* \* \* \*

### Editorial and Business Office

Scott Turtinen, Executive Director  
Minnesota Golf Course  
Superintendents' Association  
240 Minnetonka Avenue South/P.O. Box 617  
Wayzata, Minnesota 55391-1617  
Tel: 612/473-0557 • Fax: 612/473-0576  
Toll Free: 800-642-7227



## FROM YOUR PRESIDENT'S DESK

### As the Season Progresses, Don't Forget to Spend Time With Family and Friends



It was the last day of school. We arrived, anticipating what final words of wisdom Dr. Duich was going to share with us. Maybe he would lay out the ultimate nutrient schedule. Or maybe a program for "disease free" putting greens. But that didn't happen. What he had given us, were the tools to figure these out on our own. You know, every golf course has different growing conditions. Larry figured he was going to finally tell us the Cadillac of all programs that turns Poa annua putting surfaces to Bentgrass, Pennncross of course. Not a chance. Figure it out yourself, pal.

**To our surprise and great benefit**, he talked about life after graduation. We were the ones who had a chance to change our profession and private lives when the great jobs came our way. He talked about spending time with family and friends.

"What if you're in an accident in July and hospitalized for an extended period of time, would your course suffer? Not if you are a good manager. So why not be like a normal person and take a week off with your family?"

Take a summer vacation? Has he lost his mind? Bill dared to inform him that no one takes summer vacation. It is unheard of. He looked right at him and said, "There was too much divorce and substance abuse, and it was up to us to change the way we do business."

**It was our charge to keep the family structure healthy** as well as the golf courses. The golf course will always be there, so we needed to make sure our family will always be there.

This advice has stuck with me like much of the other wisdom Dr. Joe passed to us 20 plus years ago. I can tell you first hand that it works. I have taken a summer vacation every year and I still have a job and the same wife. It is also an opportunity for the staff to show its stuff. More times than not, your golf course will be better than when you left it...because we have accomplished our job of teaching our staff how to do the right things.

Try it, you'll like it.

— Jim Nicol, CGCS  
MGCSA President



HOLE NOTES (ISSN 108-27994) is published monthly except bi-monthly December/January, February/March for \$2 an issue or \$20 per year by the Minnesota Golf Course Superintendents Association, 240 Minnetonka Avenue South, Wayzata, MN 55391-1617. Scott Turtinen, Publisher. Periodicals postage paid at Wayzata, MN. POSTMASTER: Send address changes to HOLE NOTES, 240 Minnetonka Avenue South, Wayzata, MN 55391-1617.

# Inside This Issue of Hole Notes

- 5** Vice President Gore Issues Directive on FQPA – GCSAA
- 6** Pioneers in Minnesota Golf  
By Jack Kolb
- 9** The Facts About Golf Course Pesticides – GCSAA
- 11** Water Conservation  
– GCSAA Greentips
- 13** Minnesota and Wisconsin Courses Featured in Study
- 15** Oscar Bergman  
By Jack Kolb
- 17** Heard it Through The Grapevine  
By Fred Taylor
- 20** Baker National Recertified As Audubon Sanctuary
- 21** Affiliate News
- 23** Earn Certification Credits At Home – GCSAA Newsline
- 27** Golf Courses and the Environment – GCSAA Greentips
- 29** The Fairway Foundation Is on the Right Course

## Departments

- 3** From Your President's Desk  
By Jim Nicol, CGCS
- 30** Classified Ads
- 31** Membership Report  
By James Johnson, CGCS
- 34** Editor's Corner  
By Steve Shumansky



## Advertisers

Century Rain Aid	8
Country Club Turf	10
Cushman Motor Co.	18
Double Eagle Golf Construction	29
Duininck Bros., Inc.	Back Cover
Glenn Rehbein Companies	24
Grasscraft	19
Hartman	4
Herfort-Norby	25
IMC Vigoro	20
Leitner Company	Inside Back Cover
MTI Distributing Co.	Inside Front Cover
MTI Distributing Co.	5
MTI Distributing Co.	14
MTI Distributing Co.	26
North Star Turf Supply	16
North Star Turf Supply	22
Paskvan Consulting	34
Peterson Seed Co.	11
P&H Warehouse	7
Plaisted Companies	33
Polfus Implement	13
Polfus Implement	20
Precision Turf & Chemical, Inc.	24
Princo	27
Rohling Green Corp.	15
Scotts	17
Twin City Hydro Seed	23
Twin City Seed	34
Wilber-Ellis	12
Williams & Gill	23

## 1998 MGCSA CALENDAR

- May 11** ..... **Marshall GC**  
Host Superintendent: Doug Larson  
*Guest Speaker: Dr. Ward Stienstra, U of M*
- June 8** ..... **Creeksbend GC**  
Host Superintendent: John Betchwars  
*Guest Speaker: Robert Vavrek, USGA*
- July 20** ..... **MGCSA Scholarship Scramble**  
**Elm Creek Golf Links**  
Host Superintendent: Mike Klatte, CGCS
- August 17** ..... **MGCSA Championship**  
**North Links GC**  
Host Superintendent: Jerry Storjohann
- September 14** ..... **Stodola Scramble**  
**Pebble Creek CC**  
Host Superintendent: Cary Femrite
- October 5** ..... **Chaska Town Course**  
Host Superintendent: Mark Moers
- November 14** ..... **Minnesota Zoo**  
Family Outing
- December 10** ..... **MGCSA Annual Meeting**  
Minneapolis Convention Center

# HARTMAN

Est. 1972

**\*\*Sports Turf Specialists\*\***

- High Tech Drainage Techniques & Design
- Renovation & Landscaping
- Excavating & Grading

**Jeffrey L. Hartman**  
President

8011 Bavaria Rd., Victoria, MN 55386 • 612-443-2958 • Fax: (612) 443-3452

# Vice-President Gore Issues Directive on FQPA

*"...I am requesting that the EPA Administrator and the Secretary of Agriculture work together to ensure that implementation of the paramount public health goals of the new law is informed by a sound regulatory approach..."*

In response to letters, calls and visits to the White House and Congress from those affected by the Food Quality Protection Act (FQPA), Vice President Al Gore issued a directive to EPA and USDA on proper implementation of the law on April 8.

The four-page memorandum to USDA Secretary Dan Glickman and EPA Administrator Carol Browner outlines a series of "Implementation Principles." In summary, the principles require decisions based on science, communication and public in-

put. Many of the principles address specific problems the regulated industry has been experiencing in trying to work with the EPA.

## **Communicate, Disclose And Explain**

The directive says decisions should be "transparent" to affected constituencies and that the agency communicate in a manner that facilitates informed review.

## **Discretion**

The directive reminds the EPA that

it has discretion in applying elements of the law, such as the 10x safety factor and addressing risks to children.

## **Transition**

EPA is told to allow for transition, respond appropriately to emergency pest management problems, and be open to using a variety of approaches for reducing risk. The agency will be held to its work that pesticide registration cancellations will not affect this growing season.

*(Continued on Page 19)*

**STRETCH YOUR BUDGET DOLLARS**

**5.9% APR\***

**ON ALL TORO COMMERCIAL PRODUCTS**

*For more information call your total solutions supplier.*

\*OTHER TERMS AND RATES AVAILABLE



**MTI DISTRIBUTING CO.**

**PLYMOUTH, MN  
(612) 475-2200  
1-800-362-3665**

**FARGO, ND  
(701) 281-0775  
1-800-782-1031**

# Pioneers in Minnesota Golf



*Pictured from left to right are Jim Graham, Gordon Brinkworth, Leonard Bloomquist and Joe Rush.*

**H**ere is another classic picture of Pioneers in Minnesota Golf Course History. If I were to guess where this picture was taken, I would say that it was the inaugural or opening of North Oaks Golf Club.

**Jim Graham** has been discussed in the past and although he was not a golf course superintendent, his association with the industry goes back to the years of 1927-28 when the MGCSA was chartered. C.L. "Jim" Graham very generously "willed" scholarship monies to the MGCSA Scholarship Fund at his death.

**Gordon Brinkworth** has been referred to in the past as a "peripatetic" golf course superintendent. Peripatetic has different meanings. The use here refers to the term of "traveler" or "itinerant." Gordon's Dad was superintendent of the golf course in Banff, Lake Louise, Alberta, Canada. Gordie came down from Canada in about 1949 to take the superintendent's job at Minikahda. After the 1949-50 seasons he became the supervisor of construction of North

Oaks Golf Club. After the opening of North Oaks Gordie left to become superintendent at Olympic Hills Golf Club in Chicago.

**Leonard Bloomquist** became a charter member of the Minnesota Golf Course Superintendents' Association while working at "The Country Club" which was later named Edina Country Club. Lennie moved to Brookview Country Club and remained until his death. He was president of the MGCSA in the years 1940 and then again in 1952-53.

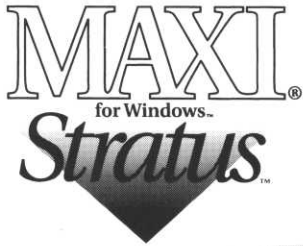
**Joe Rush** was superintendent at Edina Country Club for approximately 37 years (from 1928 until 1965) and president of the MGCSA in 1941-42. Joe had the demeanor of — and could have passed for — a corporate executive. A very happy-go-lucky person, Joe's office was graced with a piano. Whether it was there for looks, storage or entertainment was never ascertained. He may have been a charter member of the MGCSA but, was not listed among the organizers of the 1927 meeting.

— Jack Kolb



# Stratus™ and Stratus™ LINK

Two-Wire, Wireless and Decoder Central Control Systems



For easy-to-use, time-based scheduling there's really only one choice. Stratus is the one irrigation central control system to combine the point-and-click simplicity of Windows™ with intuitive Rain Bird features.

Stratus uses powerful graphics and simplified on-screen instructions to control as many as 18 holes. From tees to greens, even computer novices can be quickly acclimated to this user-friendly system.



Call your Rain Bird  
Golf Distributor at  
800-422-1487

P & H WAREHOUSE SALES, INC.

RAIN-BIRD SALES, INC. GOLF

## PLYMOUTH

9835 10th Ave. N.  
Plymouth, MN 55441  
612-542-1188  
FAX 612-546-7515

## EAGAN

1971 Seneca Road  
Eagan, MN 55122  
612-687-0282  
FAX 612-687-0382

## ST. CLOUD

415 Sundial Drive  
Waite Park, MN 56387  
320-259-6448  
FAX 320-259-0165

## SIOUX FALLS

2303 W. 50th St.  
Sioux Falls, SD 57105  
605-357-9577  
FAX 605-357-9960

## RAPID CITY

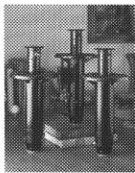
1945 Rand Road  
Rapid City, SD 57702  
605-355-9003  
FAX 605-355-9033

# Keep Your Course In Top Condition...

## Legacy Golf

Control water, labor and energy costs with a Legacy irrigation system.

Century is your local distributor with a complete line of rotors, valves and controllers.



## With Irrigation Supplies from

# CENTURY RAIN AID

## Sprinklers • Valves • Controllers • Fountains • Pump Stations • Controller Service Repair

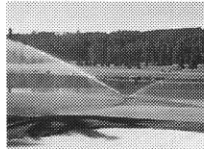
**G**olf course superintendents like yourself are making plans to get their courses in top shape for the new season. And irrigation is at the top of their lists. Century golf professionals can show you how to maintain a highly-playable course, and can

help solve any irrigation or drainage problems. They can also show you what's new in clubhouse landscape lighting, water features and more. Call today for a FREE catalog and on-site consultation: **800-347-4272**.

### Controller Board Repairs

Call Century when you need controller board repairs for Rain Bird and Toro golf controllers.

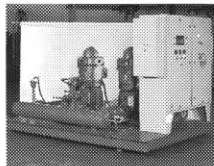
Replacement boards can be shipped within 24 hours. Call 888-855-9132.




### SyncroFlo Pumps

An efficient pump station can solve many irrigation problems. Century now offers the

SyncroFlo Eagle Series, the premier system for golf courses.



  
SyncroFlo, Inc.

### Aqua Master Fountains

Improve water quality with an aerating fountain. Century can also show you how

to create water features from existing streams or ponds.



## CENTURY RAIN AID

[www.rainaid.com](http://www.rainaid.com)  
800-347-4272

Now Serving These Major Markets: Alabama, Connecticut, Florida, Georgia, Illinois, Indiana, Kentucky, Maryland, Massachusetts, Michigan, Missouri, New Jersey, North Carolina, Pennsylvania, Virginia, Wisconsin and Ontario, Canada.

CENTURY GOLF PROFESSIONAL • MINNESOTA • ARLAN RUST 608-583-3039

# The Facts About Golf Course Pesticides

## Why Do Golf Courses Use Pesticides?

Pesticides help to limit the damage that can be caused by insects, weeds and plant diseases. Insecticides, herbicides and fungicides are used very selectively to protect the health of turf, trees and other living things on the course. Fertilizers provide much-needed nutrition for the course's plant life.

It is very important to note that pesticides and fertilizers are not used primarily for aesthetic reasons. First and foremost, they are tools that help ensure a healthy playing surface for the game. Furthermore, they help to protect a valuable and ecologically important piece of land. Golf courses are tremendous economic assets as well as vital greenspaces for communities. They employ hundreds of thousands of people, enhance local economies through tax revenues and tourism and provide many ecological benefits. For example, golf courses help to filter air pollutants and create fresh oxygen, they are excellent groundwater recharge sites and, most importantly, they are critical wildlife sanctuaries in urban and suburban areas.

## How Does a Superintendent Decide When to Apply A Pesticide?

Pest problems on golf courses are often relatively predictable or can be diagnosed as part of an ongoing monitoring program. Once the problem has been identified, the superintendent considers the available option. These could include cultural practices (such as physically removing weeds, changing irrigation patterns or clearing underbrush around a problem area to allow more air move-

ment) or the use of biological controls or chemical products. Once the problem is diagnosed and the right treatment has been selected, the superintendent waits for the ideal time to treat the problem in the most effective and environmentally sound manner available. This approach is often called "integrated pest management."

## What Kinds of Products Are Used?

Most people are surprised to find out that the majority of the pesticide products used by superintendents are identical or closely related to those used by homeowners.

## How Do We Know That These Products Aren't Harmful To Humans or Wildlife?

Pesticide production is one of the most highly regulated industries in the United States. Before a product is registered by the EPA, it must be rigorously tested for potential human health and environmental effects. This process can take up to ten years and involve more than 120 different tests and studies. Today, manufacturers often invest up to \$50 million in product safety and testing before a new pesticide ever comes to the market.

## Are Golfers at Risk?

No. There is no scientific evidence that golfers face any chronic health risks from the pesticides used to maintain courses. Once a liquid product is applied and the turfgrass is dry or the product has been watered in, there is very little chance of exposure to golfers or others who enter the area. It is worth noting that a small percentage of people may be allergic to a particular product, just as

some people are allergic to household cleaners, soaps or perfumes. Golfers with possible chemical allergies are always encouraged to contact superintendents to find out what products might be in use.

## If the Products Aren't Dangerous, Why Do Professional Applicators Wear Protective Gear?

Applicators work directly with pesticides and are exposed much more often than golfers. Applicators are exposed to concentrated material during mixing and loading. Consider the fact that it is safe for a person to have an occasional x-ray, but the technician may actually leave the room to prevent repeated exposure. Pesticide label directions (which carry the weight of law) require that applicators take certain precautions based on the assumption that the same person will be repeatedly exposed to the same product over many years. These precautions may include the use of rubber gloves, goggles, respirators or protective clothing.

## Some Media Stories Suggest That Pesticides Are Linked To Cancer. What Are the Facts?

Most of the product testing required by EPA focuses on this question. Before a product is registered, tests are done (usually on laboratory rats) using exposure rates that are considerably higher than any exposure a golfer could ever receive. Although a recent study commissioned by GCSAA to examine cause of death among its members found some higher rates of certain cancers, researchers said no cause-and-effect relationship could be established from the data. They also said lifestyle

*(Continued on Page 31)*



# PENNCROSS SOD

*from Country Club Turf*

Grown by Golf Course Professionals  
for Golf Course Professionals

Supplying over 200 Golf Courses Since 1987



5304 Minnetoga Terrace, Minnetonka, MN 55343

**(612) 470-0037**

*"A Quality Crown Reputation"*