

PENNCROSS SOD

from Country Club Turf

Grown by Golf Course Professionals
for Golf Course Professionals

Supplying over 200 Golf Courses Since 1987

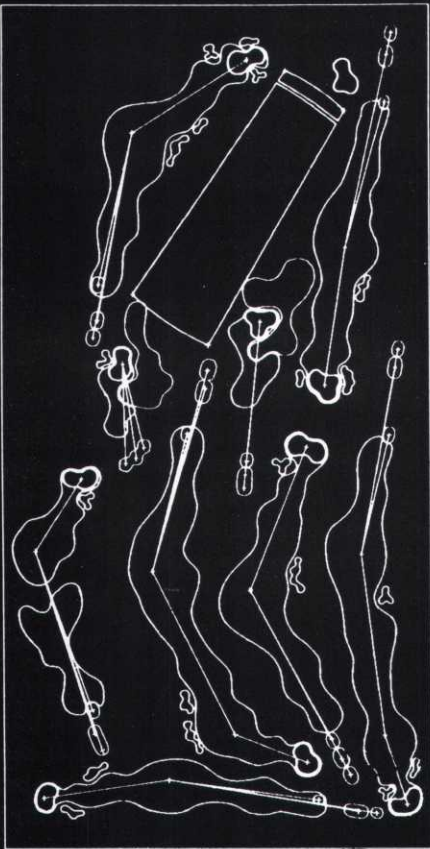


5304 Minnetoga Terrace, Minnetonka, MN 55343

(612) 470-0037

"A Quality Grown Reputation"

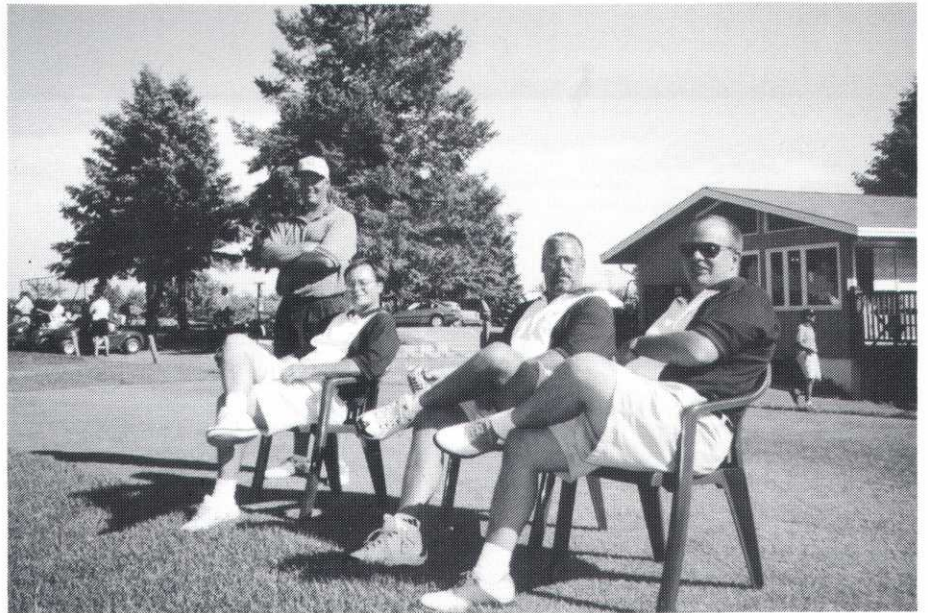
HERFORD · NORBY



GOLF COURSE
ARCHITECTURE



(612) 938-0020 (612) 944-5888



WATCHING THE AFTERNOON PLAYERS are Pete Mogren, Oak Glen CC; Shane Andrews, North Star Turf Supply; Barry Larson, Medalist America, and Jeff Churchill, North Star Turf Supply.

Relocating—

(Continued from Page 9)

the potential is there to become frustrated about all the uncertainties.

We found a house we liked (which took a while as the housing market in rural areas is quite different than the cities) and our offer was accepted. Now all we had to do was sell our house which according to our agent wasn't going to be too difficult as the housing market around the cities was very good. We had our house on the market for approximately three weeks and it worked out well that the couple that bought our house was able to close on it in a matter of weeks which was a great relief as I had been spending the past month commuting. The five hours a day I was spending on the road was getting old.

If you are doing all the packing yourself, try to do a little everyday and when the time comes to load the truck it won't seem so overwhelming. Before starting to pack I looked around and although we haven't accumulated that much, when it came time to load the truck it was amazing how it multiplied. There were times when I would take a box out and when I came back there were two in its place or so it seemed.

As soon as you know your new address and the date you will be moving, let the post office know along with utility companies and any other agencies or organizations you are affiliated with.

It's been a few weeks since we've moved and we're still getting settled in. Our lifestyle is somewhat getting back to normal and we've met a lot of nice people. Divot (our Australian Shepherd) has had some trouble adjusting and one morning left a few surprises in the lower level on our new carpet. (I think we'll have to find some geese for her to chase). My wife grew up in a small town so I'm the one who is dealing with culture shock. We're living just outside Redwood Falls, it has a population of 5,100 which is a good-sized town and we have all the modern conveniences — running water, indoor plumbing, a Dairy Queen not far away — but I've lived in the big city my whole life and I'm still trying to get used to looking out my windows and seeing haybines and bailers drive by within feet of my house. Just the other night I was standing outside and couldn't help but notice the incredible display of stars and it was right about then I felt that I could get used to this "country livin'."

Here's a Hole-by-Hole View of North Links GC

By **JERRY STORJOHANN**
Superintendent, North Links Golf Course

North Links Golf Course is a 6,073 yard, 18-hole public course with a two-hole practice facility and driving range. It is part of The Wilson Golf Group, owned by Ken and Ruth Wilson. This is a links style course with small trees and natural rough areas (no mow areas). This course was built to challenge all levels of golf with four different sets of tees, sloping greens, narrow fairways and many bunkers. Many upgrades have been and are being done to the facility since purchased by Ken Wilson two years ago. Look forward to seeing everyone on Monday, August 17 and hope everyone can make it.

This is a brief description of NLGC.

1 479 Yards Par 5

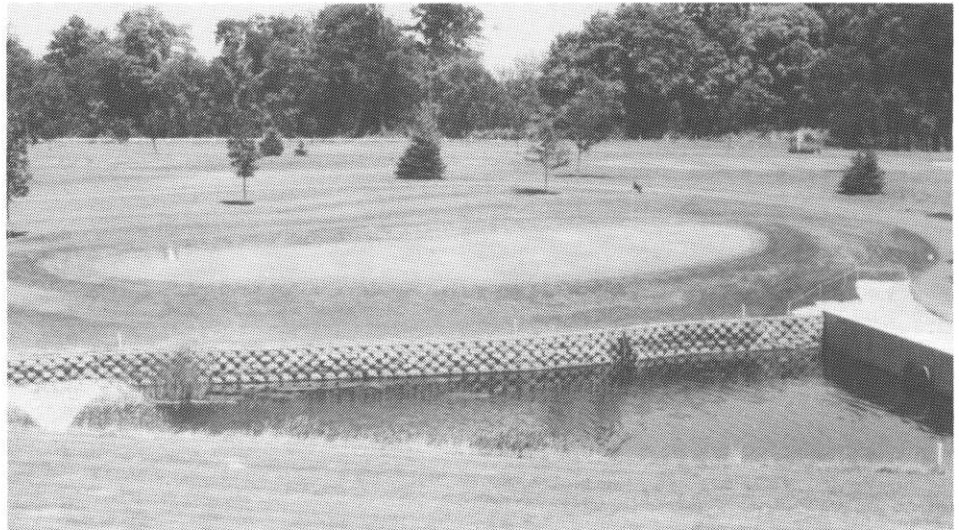
Dogleg right with sand and grass bunkers bordering left side of fairway. Water hazards on both the left and right side of fairway that will grab a mis-hit approach shot. Green slopes from back to front.

2 318 Yards Par 4

This is the second shortest par 4 on the course. Straight away hole with a narrow green placed in front of a deep ravine to collect long approach shots.

3 151 Yards Par 3

A ravine on two sides borders this hole. It features a double green shared with hole 12 — a similar par 3. The tee shot must carry a large bunker that fronts the green and also stay below the hole to avoid a slippery putt on a severely sloping green.



4 377 Yards Par 4

Hole 4 starts by crossing a 220-foot suspension bridge that spans a deep ravine. Large trees line left side of the fairway. Bunkers guard both sides of the fairway. Easy approach shot to green with a bunker left side of green.

5 386 Yards Par 4

Easy par 4. Slight dogleg right with fairway bunkers on right side. Narrow green with bunker on right front.

6 352 Yards Par 4

Dogleg right with trees bordering right side of fairway, bunkers on left side of fairway. Easy approach shot to medium-sized green.

7 497 Yards Par 5

Right side of one of the longest par 5s is lined with trees. Hole starts

out straight, dogleg right with approach shot of 100-125 yards over pond to reach small, narrow-sloped green.

8 108 Yards Par 3

Really short par 3 with a bunker to left and front of green. Backdrop consists of dense woods waiting to catch shots that fly too far.

9 365 Yards Par 4

Tee shot through a chute of trees to a large landing area. Out-of-bounds stakes guard right side of this hole. Bunkers guard left and right side of undulating green.

10 307 Yards Par 4

Shortest par 4 on the course. Water hazards on right side of fairway and behind green, with a bunker on left side of green makes this a short

(Continued on Page 15)

North Links—

(Continued from Page 13)

but challenging par 4.

11 327 Yards
Par 4

A light dogleg left with water hazards all around tee. Narrow landing area, easy approach shot to severely sloped back to front green, with bunker left front.

12 154 Yards
Par 3

Almost a mirror image of adjacent hole number 3 but with a more severe slope from back to front. Keep the ball below the hole to avoid a very slippery downhill putt.

13 487 Yards
Par 5

Hole starts out straight, then doglegs left with dense tree line on left side of fairway and bunkers on right. The green has steep undulations with a small left front bunker.

14 414 Yards
Par 4

Longest par 4 on the course. Narrow fairway with nice landing area and no surprises. Grip it and rip it! Green is challengingly sloped and guarded by three bunkers, one on the left and two on the right.



15 497 Yards
Par 5

This hole is the same distance as number 7 — the longest two holes on the course. Narrow fairway doglegs left, no mow areas on both sides of the rough, beware of long grass. Small sloped green with a large deep bunker left front.

16 164 Yards
Par 3

Longest par 3 on course. Straight forward hole. Large sloped green with bunkers guarding right front and side. No mow areas bordering green surround.



17 338 Yards
Par 4

A short par 4 with water hazards to the left side of tee and rough. Natural no mow area borders on right side of rough. The green has water hazards to left and back-side. Large bunker in front right makes approach shot to small, narrow green a challenge.

18 352 Yards
Par 4

Difficult finishing hole with water hazards lining both sides of the fairway, with a challenging approach shot to a two-tier green. Bunker located front left of green makes for a fun finish.

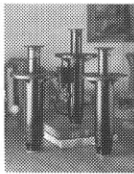


Keep Your Course In Top Condition...

Legacy Golf

Control water, labor and energy costs with a Legacy irrigation system.

Century is your local distributor with a complete line of rotors, valves and controllers.



With Irrigation Supplies from

CENTURY RAIN AID

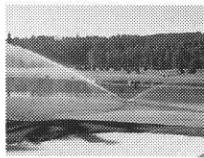
Sprinklers • Valves • Controllers • Fountains • Pump Stations • Controller Service Repair

Golf course superintendents like yourself are making plans to get their courses in top shape for the new season. And irrigation is at the top of their lists. Century golf professionals can show you how to maintain a highly-playable course, and can

help solve any irrigation or drainage problems. They can also show you what's new in clubhouse landscape lighting, water features and more. Call today for a FREE catalog and on-site consultation: **800-347-4272**.

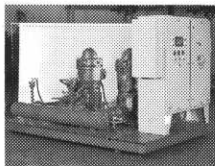
Controller Board Repairs

Call Century when you need controller board repairs for Rain Bird and Toro golf controllers. Replacement boards can be shipped within 24 hours. Call 888-855-9132.



SyncroFlo Pumps

An efficient pump station can solve many irrigation problems. Century now offers the SyncroFlo Eagle Series, the premier system for golf courses.



SyncroFlo, Inc.

Aqua Master Fountains

Improve water quality with an aerating fountain. Century can also show you how to create water features from existing streams or ponds.



CENTURY RAIN AID

www.rainaid.com
800-347-4272

Now Serving These Major Markets: Alabama, Connecticut, Florida, Georgia, Illinois, Indiana, Kentucky, Maryland, Massachusetts, Michigan, Missouri, New Jersey, North Carolina, Pennsylvania, Virginia, Wisconsin and Ontario, Canada.

CENTURY GOLF PROFESSIONAL ► MINNESOTA * DON CHELMO • 612-509-9290

Matt McKinnon Receives NCO of the Year Award

By THOMAS KIENTZLE
Cragun's Resort

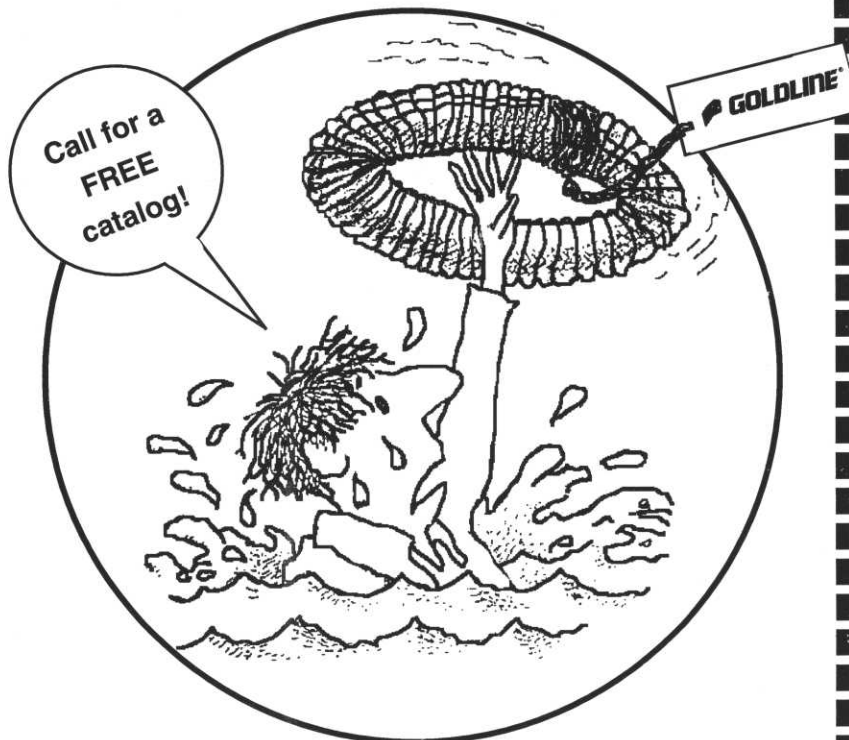
Cragun's Resort in Brainerd is undergoing a great change. This change is the new golf complex! Designed by Robert Trent Jones II, it is the largest

addition this outstanding Northwoods Resort has seen in many years. In order for a project of this nature to come to a successful completion, many



Matt McKinnon

Not every hole has to have a
WATER HAZARD!



Prinsco PE pipe will keep your
greens and fairways dry...
and always ready to play.



PRINSCO

Manufacturers of GOLDFLO Dual-Wall and
GOLDLINE Corrugated Polyethylene Pipe

800-992-1725

talented people need to be brought together.

Matt McKinnon is one of those talented team members. Matt moved to Brainerd last March to become the Assistant Golf Course Superintendent. Matt made this move from Town & Country Club in Bemidji.

In addition to an extremely busy work schedule, Matt has found the time to continue his work in the United States Army Reserves. He has been with the Army Reserves for 8½ years and holds the rank of Staff Sergeant.

Matt is the recipient of the NCO (Non-Commissioned Officer) of the Year Award for the 3rd BDE, 104th Division for 1998; he was nominated by his superiors to compete against other NCO's from the Western United States.

Matt fully intends to hold this award again in 1999! The amount of studying is 3-4 intense months. Matt is an instructor for Det.1, 3rd Brigade, 104th Division. He instructs classes on Military Occupational Specialties as well as courses in Leadership. In addition, Matt and his fiancée Shelly Erickson find time to enjoy a game of golf, camping and hiking.

The One and Only.

HERITAGE® An Ounce of Prevention...

HERITAGE is a highly flexible fungicide that exhibits both preventative and curative activity against most turfgrass diseases, plus the following advantages:

- Improves turf quality
- Controls brown patch, Pythium, take-all patch, summer patch, anthracnose and snow mold
- Reduced risk to environmental resources
- Low risk toxicological profile
- Low rates, extended spray intervals
- Novel mode of action

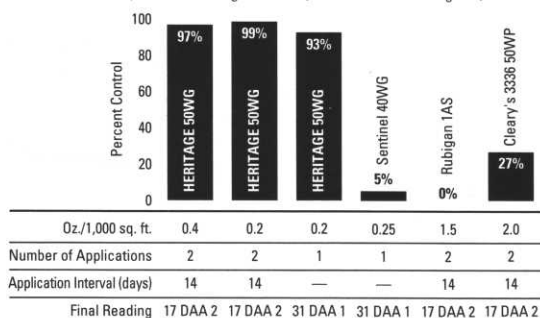


Once you learn about the powerful, preventative protection and its fit with your best management practices, you'll agree that it's time to change the course of your turfgrass disease management program, with HERITAGE.

For more information, contact your authorized Zeneca Distributor, or call Zeneca Professional Products Toll Free at 1-888-617-7690.

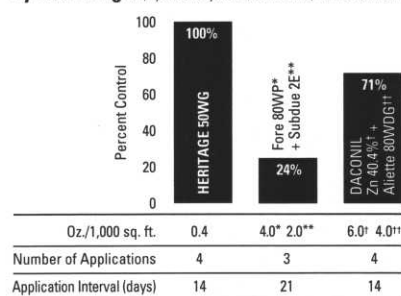
www.zenecaprofprod.com

Anthracnose¹ (*Colletotrichum graminicola*) on 80% Annual Bluegrass, 20% Perennial Ryegrass



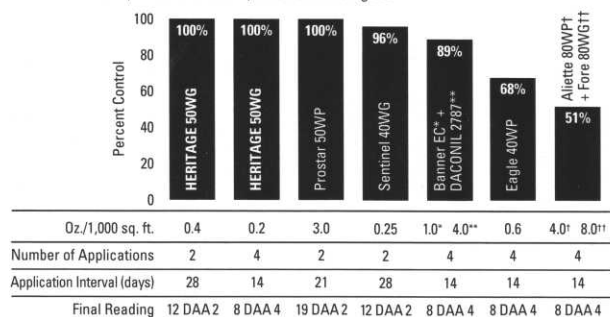
Dr. Don Scott, Purdue University, 1995 US 67-95-P354
¹ Also isolated from plots: 2 species *Rhizoctonia*; 3 species *Pythium*; and several species *Curvularia*.

Pythium Blight (*Pythium aphanidermatum*) on Perennial Ryegrass



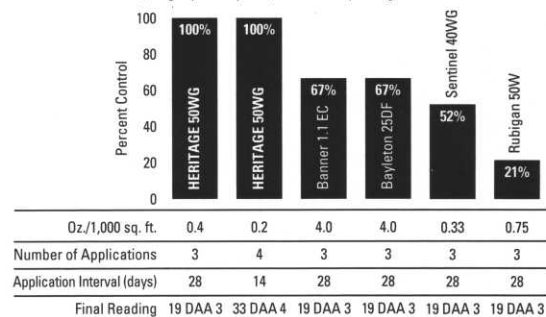
Dr. John Watkins, University of Nebraska, 1996 USNP-96-P030

Brown Patch (*Rhizoctonia solani*) on Colonial Bentgrass



Dr. Pat Sanders, Penn State University, 1994 US 66-94-P356

Summer Patch (*Magnaporthe poae*) on Kentucky Bluegrass



Dr. Bruce Clarke, Cooke College, Rutgers University, 1994 US 66-94-P362

ZENECA Professional Products

Always read and follow label directions carefully. HERITAGE® and DACONIL® are registered trademarks of a Zeneca Group Company. Aliette® is a trademark of Rhône-Poulenc Ag Company. Banner®, Sentinel® and Subdue® are trademarks of Novartis Corporation. Bayleton® is a trademark of Bayer Corporation. Cleary's® is a trademark of W.A. Cleary Chemical Company. Eagle® and Fore® are trademarks of Rohm and Haas Company. Prostar® is a trademark of AgrEvo. Rubigan® is a trademark of Dow AgroSciences. ©1998. Zeneca Inc. Zeneca Professional Products is a business of Zeneca Inc.

Heritage[®]
FUNGICIDE

CHANGING THE COURSE
OF DISEASE CONTROL

SUMMER HOURS

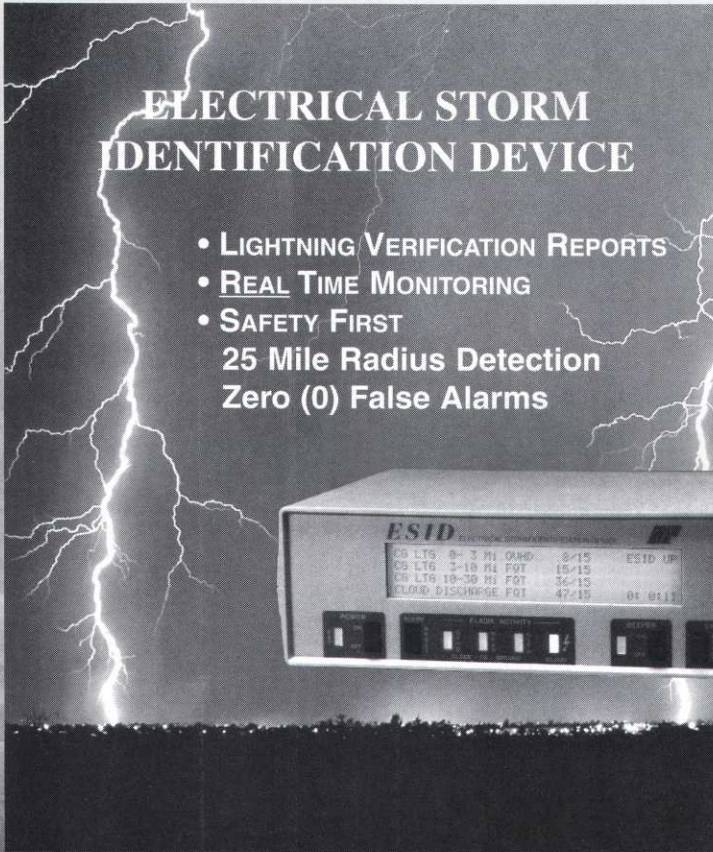
7:00 am – 5:00pm, Monday – Friday
(Plymouth, Fridley, Burnsville, and Fargo Locations)

8:00 am – 12 Noon, Saturday
(Plymouth Location ONLY)

With the exception of July 4, and September 5
when we will be closed for the long holiday weekends

These extended hours will continue
through mid September.

Covering New



ELECTRICAL STORM IDENTIFICATION DEVICE

- LIGHTNING VERIFICATION REPORTS
- REAL TIME MONITORING
- SAFETY FIRST

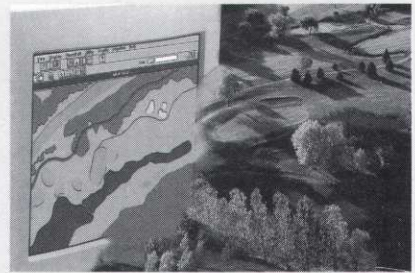
25 Mile Radius Detection
Zero (0) False Alarms

ESID ELECTRICAL STORM IDENTIFICATION DEVICE			
CS LTS 8-3 MI. DWD	8-15	ESTD UP	
CS LTS 3-18 MI. FGT	15-15		
CS LTS 18-35 MI. FGT	35-15		
CLOUD DISCHARGE FGT	47-15	01 0111	

ON-SITE DEMO AVAILABLE

CALL FOR A DEMO TODAY

SitePro™
CENTRAL CONTROL SYSTEM



PICTURE-PERFECT IRRIGATION CONTROL

SitePro is irrigation management for the 21st century.

- Incredibly flexible
- Incredibly accurate
- Incredibly powerful

PREDICTABLY TORO

IRRIGATION CONTROLLER REPAIR SERVICE

CALL JOHN AT EXT. 205

FIELD SERVICE

TWIN CITY METRO AREA

2 Commercial Products Technicians
2 Irrigation Pump Station/Controller Technicians

FARGO AREA

1 Commercial Products Technician

Ground Everyday

**EMERGENCY AFTER HOURS
IRRIGATION SERVICE**

Call 612-475-2200, Ext. 302 or
1-800-362-3665, Ext. 302

(For service during regular business hours,
8:00 am – 4:30 pm, Monday – Friday,
call John Artus at the above numbers,
but use ext. 205)

TORO

GROUNDMASTER 3000-D

- 33HP Diesel Engine
- 82" Contour Deck
- 4-Wheel Drive
- Deluxe Seat



MTI DISTRIBUTING CO.

TORO

14900 21st Avenue North • Plymouth, MN 55447
612-475-2200 • 800-362-3665

4310 Main Avenue • Fargo, ND 58103
701-281-0775 • 800-782-1031

MGCSA Scholarship Scramble

Elm Creek Golf Links • Par 70

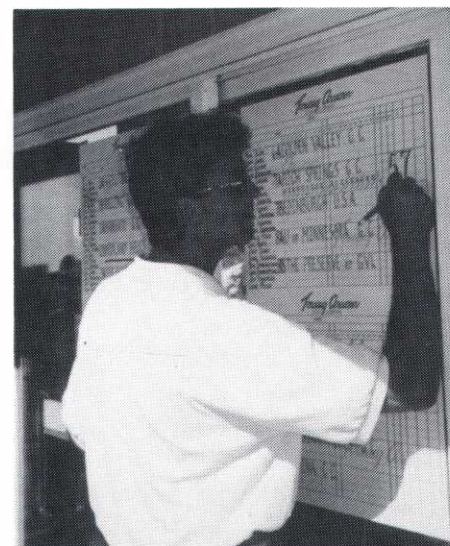
July 20, 1998

RESULTS

Tom Kasner, Mike Kasner, Michael Saatzer, Scot Milstroh	53
Mike Klatte, Jason Klatte, Tom Dargay, Dave Small.....	54
Ron Noyce, Don Nystrom, Cory Tollefson, Devin Hillman.....	57
Jim Johnson, Dave Lohn, Tom Wodash, Mark Boonstra.....	57
Joe Check, David Kirscht, Tim Berquam, Wade Tollison	59
Jonathan Pulju, Kris Schultz, Tim Krenik, Derek Wentorf	59
Dale Parske, Tom McCann, Jerry Webb, James Gardner.....	60
Paul Jones, Jim Haroldson, Tom Kientzle, Sr., John Beyer	60
Kevin Clunis, Jeff McDowell, Scott Turtinen, Jeff Turtinen	60
Marlin Murphy, Adam Larson, Dean Carlstrom, Max Windmiller.....	61
Fred Taylor, Allen Starke, Scott Ness, Paul Bersaw	61
Rod Hanson, Matt Morrisette, Matt McDonald, Justin Rother	61
Kevin Kosel, Dave Johnson, Tom Parson, Derek Gabardi.....	61
Tom Smith, Tom Proshek, Josh Eykyn, Rob Adams.....	61
Tim Berggren, Bob DeAndrea, Brandon Schurtz, Paul Switzer	61
John Queensland, Terry Tipton, Wilfred Thome, Dean Tipton	62
Charlie Pooch, Russ Adams, Jerry Bibbey, Duane Slaughter.....	62
Tom Johnson, George Norman, Greg Moe, Wayne Willey.....	63
Joe Churchill, Jeff Churchill, Shane Andrews, Barry Larson	63
Neil Wilson, Ted Schirck, Steve Windgate, Todd Folie.....	63
Brooks Ellingson, Leroy Wurm, Jeff Kyllonen, Jake Risbrudt.....	63
Tom Meier, Leif Erickson, Jeff Linder, Mike Nelson.....	63
Dennis Owen, Matt Nelson, Tim Johnson, Bud Getta.....	64
Dan Swenson, Matt Johnson, Dean Wojtczak, Kyle Dahlberg.....	64
Dick Grundstrom, Dean Grundstrom, Charlie Schultz, Pete Mogren,	64
Jim Nicol, Mark Storby, Blair Hawkins, Joe Maloney.....	65
Tom Fischer, Kelly Josephson, John Lindman, Trevor Gunderson.....	65
Jeff Backstrom, Jon Almquist, Bob Frank, Chris Manor	65
Mike Hilliard, Dan Brown, Dan Miller, Stan Kinhead.....	65
Walt Braunig, Paul Hanson, Mike Butchert, J.P. Moline.....	65
Mike Bohnenstingl, Chad Bohnenstingl, Jeff Vinkemeier, Clint Meyers.....	65
Matt Rostal, Rick Carr, Steve Makowske, Mike Roddy	65
Mike Brower, Tim Rasmussen, Kurt Knox, Chris Carpenter	66
Mike Olson, Adam Gable, Jeff Girard, Ryan Rhinowski.....	66
Jason Spitzner, Tim Rabe, Ben Mosier, A.J. Hoffman	68
Jim Kassera, Tom Bisel, Jon Ludvigson, Mike Mineheine.....	66
Randy Allen, Curt Pickar, Jeff Fredeen, Dave Krupp.....	68
Larry Mueller, Daniel Hill, Craig Robinson, Todd Wanttaja	68
Jeff Whitehurst, Mark Goettig, Dennis Bain.....	69
Pat Walton, Kyle Rallis, Doug Shoutz, Tim Evenson	69
Chris Quinlan, Brian Quinlan, Tim Jasma, Roger Smith.....	70
Brad Zimmerman, Ken Felix, Chad Maenke, Heath Raverty.....	71
Shannon Vick, Al Frank, Curt Kenke, Steve Scholl.....	71
James Schmitz, Scott Adams, Dave Hormadko, Pat Brickley	71



MARTY & MIKE KLATTE
Host Superintendents



DAVID KIRKBRIDE
Golf Pro at Elm Creek



MIKE BOHNENSTINGL
The Preserve at Grand View Lodge

 <p>Williams-Gill & Associates</p>	<p>Office (715) 425-9511 Facsimile (715) 425-2962 E-mail golfwga@presenter.com</p>
	<p>Golf Course Architects</p> <p>Williams, Gill of Wisconsin</p> <p>122 N. 2nd St. River Falls, WI 54022</p>
<p>• Services •</p> <ul style="list-style-type: none"> • New Course Design • Master Plans • Golf Practice Center Design • Environmental Planning • Irrigation Design • Renovation & Restoration • Site Planning 	