

Have service and support. Will travel.

You're never far from expert service and support in the Twin Cities metro area. In fact, we'll bring everything right to your course. Our brand-new customer support truck has a full complement of genuine Jacobsen replacement parts and a broad selection of turf supplies and accessories. Plus, technical assistance that will keep your equipment up and running and your turf looking its best.

Jacobsen replacement parts are backed by an exclusive, 2-year *Cutting Edge Warranty*.™ And Jacobsen's *Orange Key Product Support System* features *Jacobsen Parts Xpress*, with a wide range of delivery options, including next-day delivery right to your door.

For service and support that's always ready to roll, call North Star Turf. Just say the word and we'll stop at your place with everything you need to keep your course in tip-top shape.

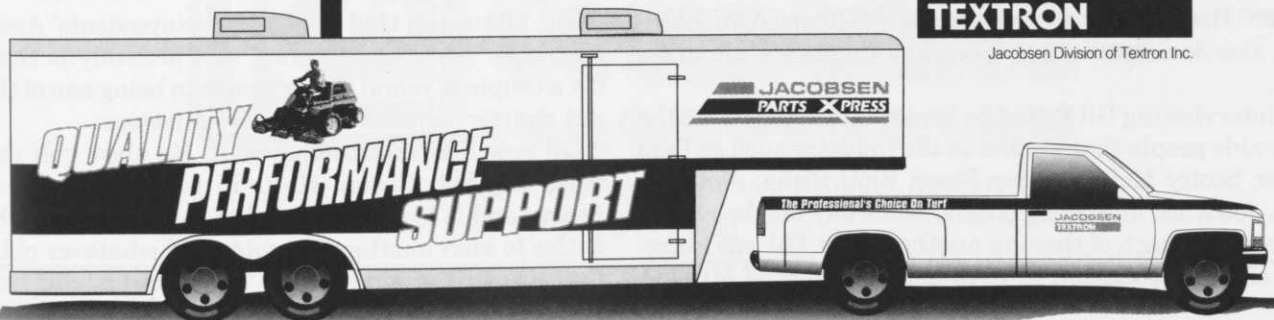
NST
NORTH STAR TURF, INC.

North Star Turf, Inc.
3080 Centerville Road
St. Paul, MN 55117
Phone: 612-484-8411/800-592-9513

THE PROFESSIONAL'S CHOICE ON TURF

**JACOBSEN
TEXTRON**

Jacobsen Division of Textron Inc.



Where are they today?

GILBERT FOSTER

By JACK KOLB

Have you ever felt like an anthropologist who has just discovered a species of man that the whole world thought no longer existed?

That was my feeling as I probed the archives for a subject that I was sure had long passed on to the "Eternal Green" where 100-yard putts are gimmees. This gentleman is a virtual dinosaur in the turf industry. The name **Gilbert Foster** will register only with those of you who have been around since the years immediately after World War II.

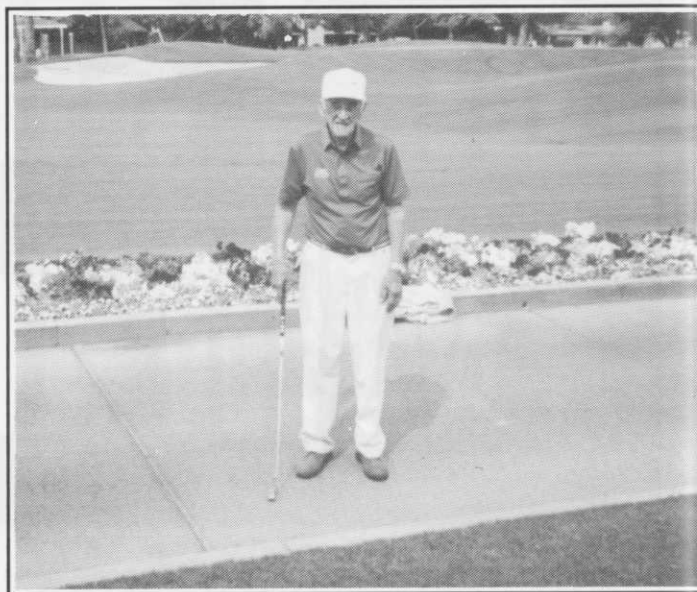
Gil Foster attended the old "Agriculture School" which was located on the St. Paul Campus of the University of Minnesota. This was back in 1928, with succeeding years of stock market crash and depression.

To have a scientific background in those days was to be a "Rare Bird." In peddling his knowledge he was befriended by a gentleman "Greenkeeper" at Keller Golf Course in St. Paul by the name of Harold Stodola. So Gil worked for Harold learning the intricacies of "greenkeeping" until 1936 when the head pro at Town and Country Club, Jock Hendry, was casting about for a knowledgeable "Greenkeeper."

Gil Foster labored at Town and Country Club for 17 years. Many changes took place during those years. The U.S. had gone to war as did many of the club's members, money was directed toward the war effort, budgets shrank, equipment was impossible to buy, tires were allocated on agricultural need, which left many a tractor set on blocks. Gasoline was rationed and that meant golf courses would have to go back to horses if they were to remain operating.

War's end came and in 1946 some of the chemistry developed during wartime was released to the civilian population. Town and Country Club, with Gil's supervision, was to benefit from one of the earliest uses of 2, 4-D which was used to eliminate weeds from its fairways. Equipment manufacturers such as Toro and Jacobsen started manufacturing "Power Greens Mowers" both of which demonstrated their first models during Gil Foster's administration. Ryan Manufacturing Company came out with the first "Sod Cutter." Herb Cohrs had made the first "Greens Aire" (Airi-fier), also demonstrated at Town and Country Club in St. Paul.

In interviewing Gil Foster he kept reminiscing about the venerable people that worked in the industry such as Paul Miller, Scotty McLaren, Leo Feser, Emil Picha, Jim Graham, Joe Rush and many others. Some day maybe we can elaborate on each of them in another story. Gil was Secretary of the Association in 1948 and President of MGCSA



Gilbert Foster at Phoenix Country Club is ready to tee-off. Gil has golfing privileges here as the result of many years of dedicated service.

in 1949.

In 1953 Harold Stodola moved from Keller to Firestone Country Club in Akron, Ohio, thus leaving a vacancy that was filled by Gil Foster. In this capacity Gil began to expand his horizons. He was now in charge of both Keller and Goodrich golf courses. Gil also had bought a farm in Gem Lake Township near White Bear, Minnesota and began to develop what became Gem Lake Golf Club. He also became the first Bent Grass Sod or Stolon grower in the area, growing certified grasses such as C-1 Arlington and C-19 Congressional bent. Several golf courses were converted from sand greens to Bent grasses at this time which included Goodrich Golf Course in St. Paul.

There are many old stories that Gil would love us to tell. We neither have the room nor space for them in this article, and I have been privy to some of the lesser escapades that he referred to.

The Minnesota Golf Course Superintendents' Association should be proud of this man, who probably is the closest (by a couple of years) living person to being one of the original charter members of our organization.

Gil now lives in Phoenix, Ariz. He plays golf regularly with daughter Susan. He is in his 87th year hale-and hearty and is looking forward to coming back to the Twin Cities to visit another daughter and whatever old friends that are still around. "Play on through, old buddy!"

When you need **Top Dressing Material...**



you need Plaisted.

Plaisted Companies is the one call for all your golf course materials, including top dressing blends to meet your most demanding specifications.



**Plaisted
Companies**
INCORPORATED

P.O. Box 332 • 11555 205th Avenue N.W. • Elk River, MN 55330

612-441-1100

Construction Materials • Top Dressing Blends • Bunker Sand • Carpath Aggregate • Drintile & Decorative Rock

Photo courtesy of Burian Photography®

Q. Why FLOWTRONEX PSI?

A.

REASON #1.

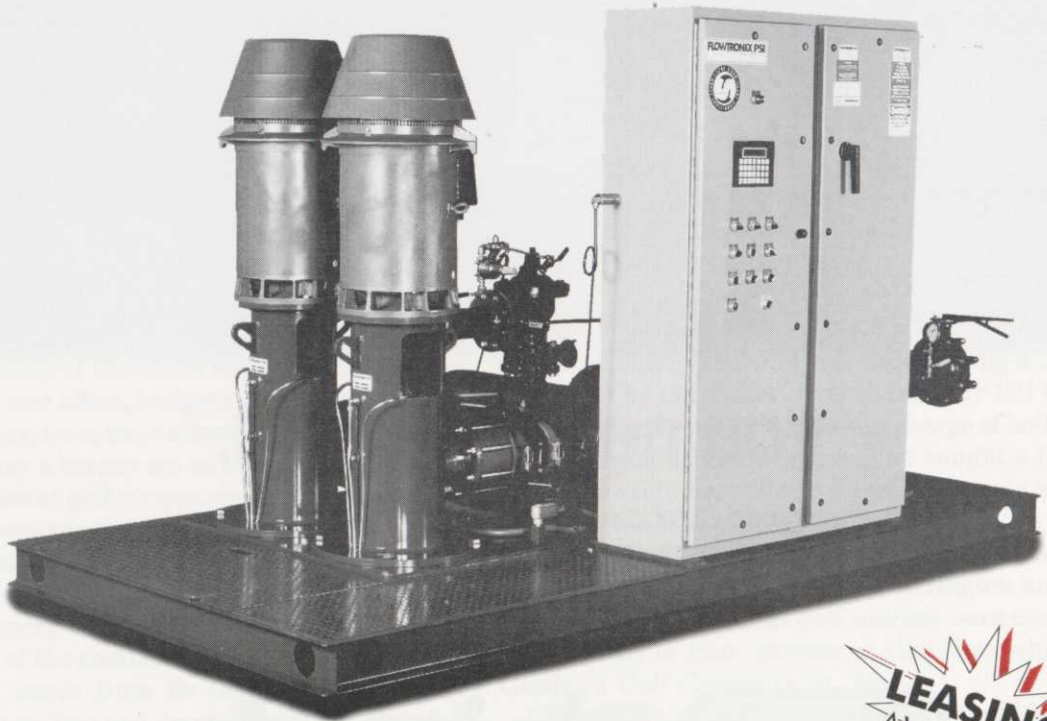
SUPERIOR PRODUCTION. The Silent Storm Variable Frequency Drive pump station combines efficiency and simplicity to save you up to 50% on your power bills and countless hours in maintenance to your pump station and entire irrigation system.

REASON #2.

INDUSTRY LEADERSHIP. FLOWTRONEX PSI is the world's largest pump station manufacturer, with more installations than all of our competitors combined.

REASON #3.

WORLDWIDE SERVICE. Using the revolutionary FlowNet service network, FLOWTRONEX PSI is able to provide 24-hour support and fast on-site service when you need it.



**LEASING
AVAILABLE**

Whatever your needs:

- Variable Frequency Drive or Conventional
- Vertical Turbine or Horizontal Centrifugal
- Prefabricated or Retrofit

MTI DISTRIBUTING CO.

FLOWTRONEX PSI
Pumping Systems

Contact: Dean Chaltas at
612-475-2200 Ext. 224

MTI Distributing Co.
14900 21st Ave. N.
Plymouth, MN 55447

1997 MINNESOTA TURF TOURNEY

FORMAT

The week of June 9-13 each entered four-person team will play 18 holes of golf at its assigned club. Two golf carts are included in the entry fee/donation price. Club assignments will be made on a first-come basis. All entry blanks were mailed at the same time to give everyone an equal opportunity for desired course selection. Entries will be accepted starting May 1, 1997.

ENTRY DEADLINE

Entry forms must arrive by 4:00 p.m. on Monday, June 2, 1997 at the MGCSA office, 240 Minnetonka Avenue South, P.O. Box 617, Wayzata, MN 55391. The donation/entry fee must accompany the entry form — \$80.00/person \$320.00/team. Late or incomplete entries are not acceptable and will be returned.

PRIZES

Tee prizes will be given to all participants.

ELIGIBILITY

Entries are open to all golfers. All entries are subject to approval or rejection by the MGCSA Tournament Committee. Your golf site will be mailed to the No. 1 player and also a phone call made to inform you of the respective club's etiquette and dress requirements, and if any other privileges are available. Any questions should be directed to the tournament chairman, Jim Nicol, CGCS (612/448-3626), or Scott Turtinen (612/473-0557).

CHANGES, WITHDRAWALS AND REFUNDS

Changes in the foursome can be made at any time before the playing date. The MGCSA Tournament Committee should be notified of the change immediately so the proper communications can be relayed to the respective host course. Entry fee will be refunded, regardless of reason, if Scott Turtinen is notified before the close of entries on June 2nd at 612/473-0557. The fee will also be refunded in event of injury or illness if requested by June 4th. No refunds for any reason after June 4th. A \$5.00 service charge will be deducted from all refunds.

APPLICATION FOR ENTRY

The 11th ANNUAL MINNESOTA TURF TOURNEY OF THE MINNESOTA GOLF COURSE SUPERINTENDENTS' ASSOCIATION

Please enter this team in the 1997 Minnesota Turf Tourney of the Minnesota Golf Course Superintendents' Association. The donation/entry fee of \$80.00 per person (\$320.00 per team) is enclosed.

The players named below are members of the _____ Club(s).

No. 1 Player _____

Address _____

City _____ State _____ Zip _____

Daytime Telephone _____

Fax _____

(Registration material mailed to No. 1 player only)

No. 2 Player _____

Address _____

City _____ State _____ Zip _____

Daytime Telephone _____

Fax _____

No. 3 Player _____

Address _____

City _____ State _____ Zip _____

Daytime Telephone _____

Fax _____

No. 4 Player _____

Address _____

City _____ State _____ Zip _____

Daytime Telephone _____

Fax _____

GOLF COURSE PREFERENCE:

- Bunker Hills Golf Club (6/11)
- Eau Claire Country Club (6/12)
- Edina Country Club (6/12)
- Golden Valley Country Club (6/13)
- Hillcrest Country Club (6/10)
- Indian Hills Golf Club (6/11)
- Izaty's Golf & Yacht Club (6/9)
- Madden's Resort—"The Classic" (6/9)
- Mankato Golf Club (6/11)
- Midland Hills Country Club (6/12)
- Minnesota Valley Country Club (6/12)
- North Oaks Golf Club (6/11)
- Olympic Hills Country Club (6/12)
- Stillwater Country Club (6/11)
- The Minikahda Club (6/9)
- The Preserve Golf Club (6/10)
- Wayzata Country Club (6/9)
- Woodhill Country Club (6/9)

(*available dates in parenthesis)

1ST CHOICE: _____

2ND CHOICE: _____ 3RD CHOICE: _____

4TH CHOICE: _____ 5TH CHOICE: _____

DRESS FOR THE GOLF GAME: Players must wear proper golf attire which is acceptable by the host clubs. No tennis shorts or jeans. Please report to the golf shop at our assigned club at least 10 minutes prior to our scheduled starting time and be available to start.

Liability:

- We acknowledge that the Minnesota Golf Course Superintendents' Association or the host clubs are not responsible for any injury during the playing of this golf game.
- We agree that this entry is subject to rejection at any time (including during the Tournament) by the MGCSA. The reason for rejection may include unbecoming conduct.

The MGCSA Tournament Committee will make club assignments and contact the No. 1 player on each team of your tee time and club.

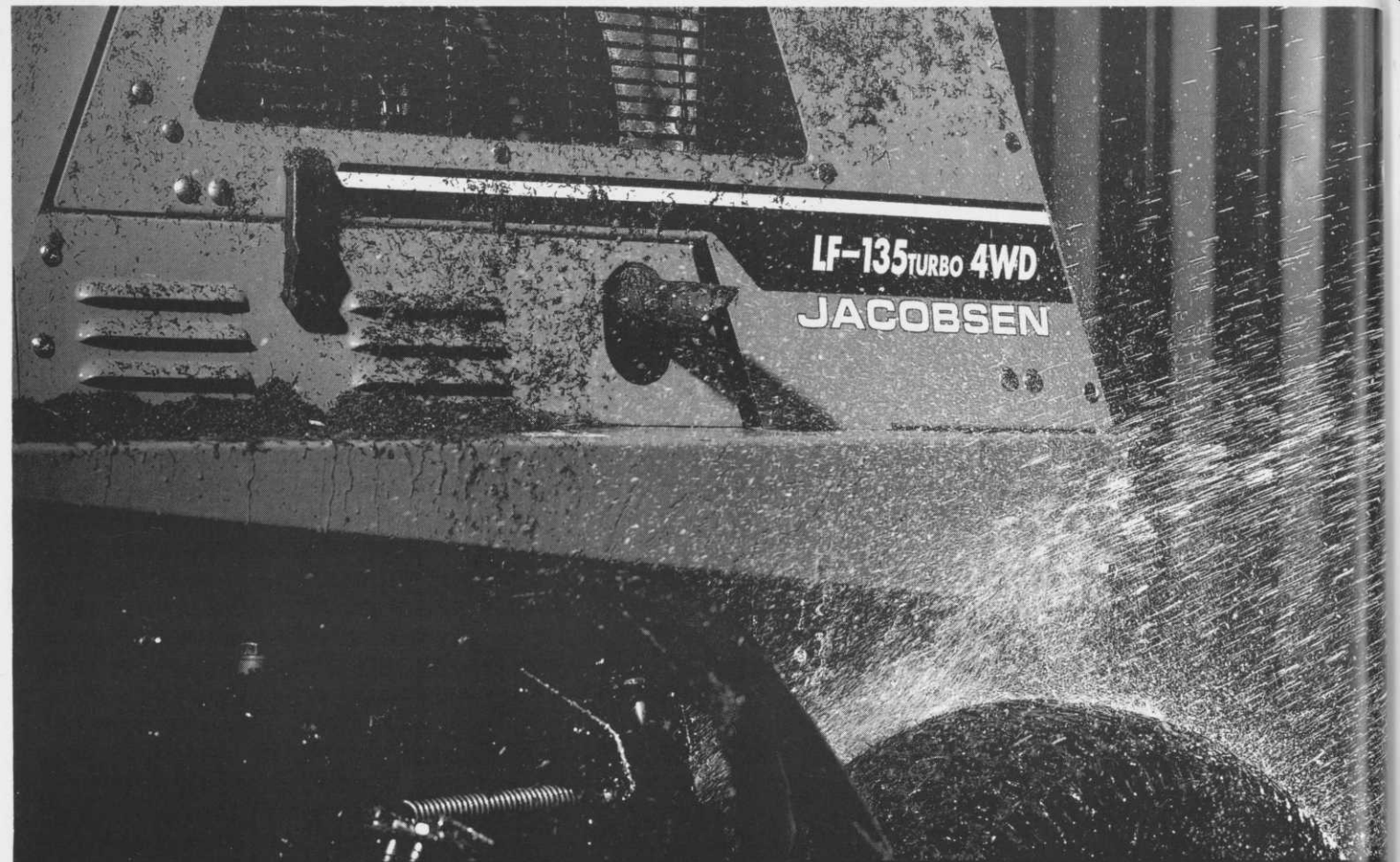
Signatures of Players: _____

Make check payable to the Turfgrass Research Benefit and mail to: Turfgrass Research Benefit, MCGSA, P.O. Box 617, Wayzata, MN 55391

Sponsored By: MINNESOTA GOLF COURSE SUPERINTENDENTS' ASSOCIATION

FOR MORE INFORMATION, CONTACT THE MGCSA BUSINESS OFFICE AT (612) 473-0557 or 1-800-642-7227

BENEFITS OF DONATION: Money generated from this event goes into the MGCSA Research Fund.



LF-135 TURBO 4WD
JACOBSEN

More power. Bigger reels. Faster changeovers. Everything you've asked for.



You'll love everything about the Jacobsen LF family of fairway mowers. The Jacobsen LF-135

Turbo has a 35-hp turbo-charged diesel engine and large 7-inch diameter reels to get through the thickest, wettest turf.

For faster reel changeovers without tools, both the LF-135 Turbo and LF-128 have the exclusive



FlashAttach™ reel-mount system. See your Jacobsen distributor for an LF demonstration today.

THE PROFESSIONAL'S CHOICE ON TURF

JACOBSEN

TEXTRON

800-727-JAKE www.jacobsen.textron.com

NST

NORTH STAR TURF, INC.

3080 Centerville Road
St. Paul, MN 55117

(612) 484-8411
(800) 592-9511

MGA Hires New Legislative Counsel

The Minnesota Golf Association has hired the Minneapolis law firm of McGrann, Shea, Franzen, Carnival, Straughn & Lamb to serve as its new Legislative Counsel.

The firm will represent the MGA in monitoring current legislation and/or assisting in proposals introduced before the Minnesota State Legislature as they relate to golf interests in the areas of real estate tax, environmental, employment and other pertinent issues.

William R. McGrann will assume primary responsibility for the MGA and will be assisted by Doug Carnival, Randy Morris, Doug Franzen and Kathleen Lamb. The firm will work with MGA's chairman of the Government Relations Committee, William Bohmer, who said, "In that the MGA serves as an umbrella, under which all the state's allied golf association's can work together, we have hired an extremely talented group to represent all of our joint issues."

"Legislative representation at the Capital is one of the many services that the MGA provides to its member clubs and its associate members," said MGA President Roger Gordon. "I am delighted to have such a well-qualified firm representing MGA in this endeavor."

"We are delighted to have our law firm acting as legislative counsel to the MGA," said McGrann. "Some of our firm members have been members of the MGA and we have greatly admired the organization and everything it stands for. We look forward to representing the association at the Minnesota Legislature and to help accomplish the goals of the organization."





**Williams-Gill
& Associates**

Garrett Gill, Principal

Office (715) 425-9511
Facsimile (715) 425-2962

Golf Course Architects

Williams, Gill of Wisconsin
421 North Main Street
River Falls, WI 54022

• Services •

- New Course Design
- Master Plans
- Golf Practice Center Design
- Environmental Planning
- Irrigation Design
- Renovation & Restoration
- Site Planning



2nd Annual MTGF GOLF TOURNAMENT July 28, 1997

Elk River Country Club
Elk River, Minnesota

**AN OPPORTUNITY TO MEET OTHERS
IN THE TURF & GROUNDS INDUSTRY**

4-Person Scramble with Handicap

1:00 p.m. Shotgun

Team Handicap will be determined by using 10% of the four combined handicaps.

\$50 Entry Fee per person
includes Greens Fees, Prizes, and Barbecue Dinner.

I wish to register the following team members:

1. _____ Company _____ Association _____ *Hdcp. _____

2. _____ Company _____ Association _____ *Hdcp. _____

3. _____ Company _____ Association _____ *Hdcp. _____

4. _____ Company _____ Association _____ *Hdcp. _____

Above is our 4-person Team *If you do not have a registered handicap, list your average score for 18 holes.
 Please pair with other players

Contact's Name: _____ Phone Number: _____

Contact's Address: _____

City: _____ State: _____ Zip: _____

For vendors wishing to sponsor a hole, the following locations are available with a sign. You may feature your wares or give tee prizes if you wish.

1st and 10th Tees.....\$100
Putting Green.....\$100
Par 3 Tees.....\$75
All other Tees\$50

Golf Tournament: _____ players @ \$50.00 each \$ _____

Dinner Only: _____ persons @ \$12.00 each \$ _____

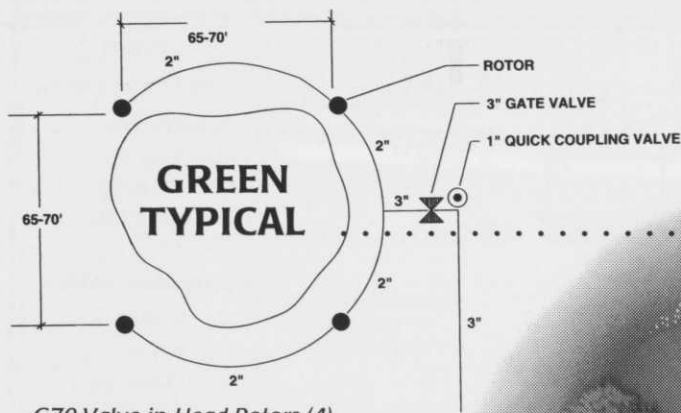
Sponsorship: \$ _____

TOTAL ENCLOSED: \$ _____

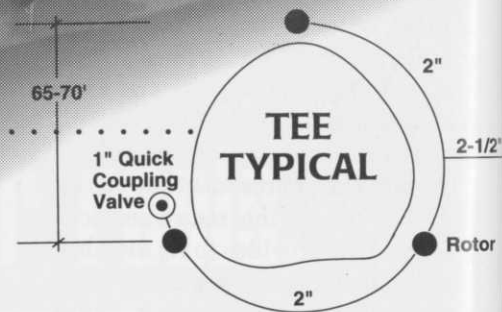
REGISTER BY JULY 14 AND MAIL TO:
MTGF Tournament Office
P.O. Box 617
Wayzata, MN 55391

**Please contact Scott Turtinen, (612) 473-8169 or 1-888-473-8873
For further information or to reserve your spot.**

**ALL MONIES EARNED IN EXCESS OF EXPENSES WILL BE USED
FOR FUNDING MTGF EDUCATION AND RESEARCH.**



G70 Valve-in-Head Rotors (4)
 1" Quick Coupling Valve-QC100Y (1)
 3" Gate Valve T6673 (1)
 2" PVC Pipe Class 200 BE (260 Ft)
 3" PVC Pipe Class 160 GJ (60 Ft)
From as low as \$600.00



G70 Valve-in-Head Rotors (3)
 1" Quick Coupling Valve-QC100Y (1)
 2" PVC Pipe Class 200 BE (200 Ft)
 2 1/2" PVC Pipe Class 200 BE (40 Ft)
From as low as \$400.00

Call Century for Solutions When Irrigating Tees to Greens

Every golf course has a few problem tees and greens. Maybe it's puddling at the base of a slope or poor soil infiltration. If you're looking for irrigation solutions, give Century a call. Our trained technical staff has provided golf course irrigation systems for over 30 years, and can help you with new courses, retrofits, central control and quality products. Like Legacy G70 golf rotors from the world leader in gear-drive technology. It's compatible with all existing systems, has a sturdy, impact-resistant body and delivers even water distribution. Call Century today for solutions to golf course irrigation problems : 800-347-4272.



Legacy G70
 Valve-in-Head Rotor
 List Price \$137.00

Also Available in Hydraulic

CENTURY RAIN AID

LEGACY™
 GOLF IRRIGATION

CLASSIFIED ADS

FOR SALE

- 40 Toro VT3 Controllers . . \$400
- 1 VT3 Computer Central . \$800
- 1 LTC Controller \$600

Computer includes screen, printer and computer. All controllers include steel pedestal and control panel.

Contact: TOM FISCHER
Edinburgh USA

(612) 424-8756

FOR SALE

1991
Toro Fairway Aerator
— Model 9500
Used one season.
Price is negotiable.

Contact: KEVIN CLUNIS
St. Croix National Golf Club

(715) 247-4260

FOR SALE

1977
Cushman Truckster
\$600 or best offer.

Contact: RICK
Tartan Park GC

(612) 736-8797

FOR SALE

5-Gang Jacobsen
Pull-Behind
Rough Mower Unit
\$1500

Contact: BOB ADAMS
New Prague GC

(612) 758-6207

FOR SALE

1992 Hydro-Ject 3000
842 hours
Very Nice Condition
Many Extras
\$16,500

Contact: KEVIN CLUNIS
St. Croix National Golf Club

1-800-961-2116

*Congratulations
to Joe Moris for
his first grandson
Tyler Joseph
7 lbs.*

Born April 17, 1997

**MGCSA
TURF
SCHOLARSHIPS
ARE
AVAILABLE
AT THE
MGCSA OFFICE
612/473-0557
OR TOLL FREE
1-800-642-7227**

**PUT YOUR
MONEY
WHERE YOUR
DOLLAR
SPOTS
WITH CHIPCO® 26019**



RHONE-POULENC AG COMPANY
P.O. Box 12014, 2 TW. Alexander Drive
Research Triangle Park, NC 27709
1-800-334-9745

Pruning and Common Sense

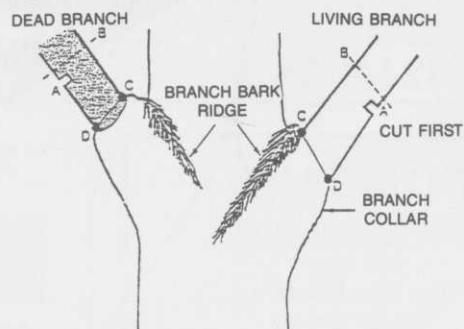
By MICHAEL ZINS
University of Minnesota

It has often been said that pruning and common sense go hand in hand. Too often though, we view the pruned trees in our communities and wonder indeed where the common sense went. Perhaps it went on the brush pile, callously disregarded like the tree parts that were rejected. What can be done about some of this appalling butchery and total disregard for the natural beauty of our trees? Plenty, if we just think about it. By following some basic rules and pruning techniques, we can have a profound effect on the shaping and maintenance of our community trees.

To many tree care novices, pruning means removing branches, often with little thought as to what will happen afterwards. Pruning rules and techniques are thought of as unimportant or not even thought about at all. It is easy to understand their position when we hear "professional" terms such as Drop Crotching, Callous, Branch Collar, Included Bark, Scaffold Systems and other seemingly unrecognizable words being used to describe the proper way to prune trees.

So what are we trying to accomplish with tree pruning anyway? First, we should look at why we prune. One reason is to help the plant develop its form. Damaged and broken branches, crossing or rubbing branches, inward growing branches and multiple leaders should all be pruned. Another reason for pruning is to help preserve the

The best time to prune most trees for tree health is in the late dormant season (March & April in Minnesota). To minimize the spread of oak wilt, trees should *not* be pruned in April, May or June. For fireblight problems which show up on apples, crabapples, mountain ash and others in the



rose family, prune them when dormant in late winter. Honeylocust should be pruned when dormant or during dry conditions. Trees that "bleed" may be pruned in June-July if the "bleeding" is a concern. Maples, birches and nut trees fall into this category.

When pruning any branch, the cut should be made outside of the branch collar (see diagram above). Proper pruning will eliminate stubs and allow proper wound sealing.

There are several reasons not to prune trees, but two of

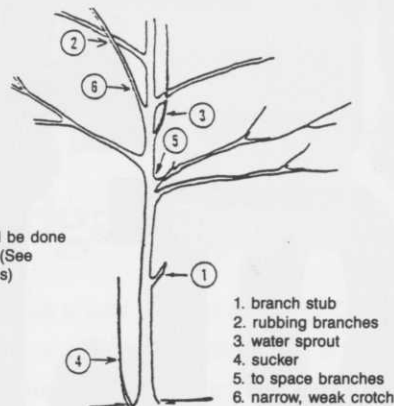
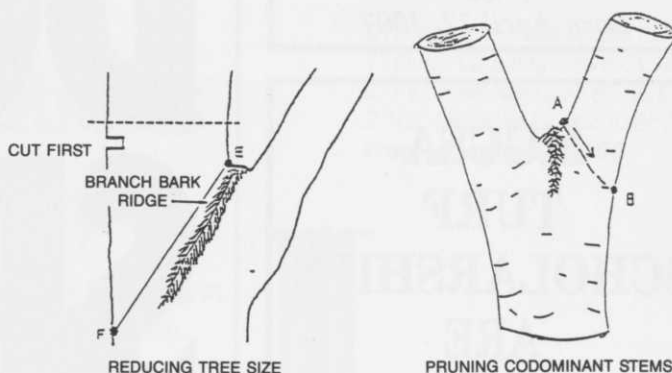


Fig. 1 Pruning that should be done on this young tree. (See numbers for reasons)

1. branch stub
2. rubbing branches
3. water sprout
4. sucker
5. to space branches
6. narrow, weak crotch

health of the plant. Diseased, dying or dead branches, injured branches, narrow angled crotches and watersprouts should all be removed. Hazardous branches should also be pruned. Any branches that interfere with pedestrian traffic and utilities fall into this category. (Remember, only qualified arborists should prune around electric lines.)

Pruning is really preventative maintenance. It is really critical on young trees to avoid problems before they exist. Too many young trees are improperly pruned, or in more cases not pruned at all, for several years. Then it becomes a major operation to remove bigger branches that will deform the tree. The following figure illustrates some potential problems to prune.



the most common are to thin out the crown and crown reduction or topping. Of these two bad practices, topping is by far the worst offender and is perhaps done the most often. Cutting off large vertical branches will allow decay organisms to enter the branches through the cut stems. Eventually, the tree may become hollow and considerably weakened. If a crown reduction is desired, branches should always be cut back just above a lateral branch as shown in the diagram at the right.

Remember, the best pruning job isn't judged by the size of the brush pile, and yearly pruning is much better than putting it off for several years.